

README - Agilent ProteoAnalyzer controller software

Contents

1. Introduction

1.1 New Features with ProteoAnalyzer controller software revision 1.0.0.12

2. System Configuration

2.1 System Requirements

2.2 PC Hardware Requirements

2.3 Operating System Requirements

3. Software Installation and Setup

3.1 Installation Instructions

3.2 Uninstall Instructions

1 Introduction

This document provides the latest information and installation advice corresponding to the Agilent ProteoAnalyzer controller software.

1.1 New Features with ProteoAnalyzer controller software revision 1.0.0.12

2 System configurations

2.1 System Requirements

2.2 PC Hardware (minimum requirements)

The ProteoAnalyzer controller software tested requirements are as follows:

Processor: i5 or higher

RAM: Physical: 4 GB

Display: Min resolution of 1280x1024 or 1280x800 pixels

Hard disk: 500 GB recommended

2.2.2 Operating System requirements

The ProteoAnalyzer controller software has been fully tested and is supported to run on

- Microsoft © Windows 10 64 bit with **English (US)** language settings The ProteoAnalyzer controller software tested requirements are as follows:

Operating system: Microsoft © Windows 10 64 bit 1803 or later

Operating system language: English (US)

Operating system region settings: English(US) in default configuration

Microsoft .NET: 4.6.2 or higher

Adobe Acrobat DC: DC 19.012.0034 (English US) or higher required for reporting

The Automatic reporting function in the ProteoAnalyzer controller software requires Adobe Acrobat DC Reader version 19.012.0034 or later to be able to view and generate reports. All PCs supplied by Agilent Technologies will have this pre- installed. Reporting to .pdf format is the default.

3 Software Installation and Setup

3.1 Installation Instructions

The ProteoAnalyzer controller software installation program 'ProteoAnalyzer Controller Software installer.exe' is a Microsoft Windows application. You must have Windows 10 including latest updates installed prior to installing the ProteoAnalyzer controller software.

To install the ProteoAnalyzer controller software, perform the following steps:

1. Start Windows.

2. Before installing please make sure you have administrative rights to install the software on your computer. You need to have an account with **administrative rights** to successfully install all required components.

3. Close all running programs, including all instances of any ProteoAnalyzer controller software subprogram.

4. Download the installation program from the following link:

<https://explore.agilent.com/Software-Download-Fragment-Analyzer-Prosize>

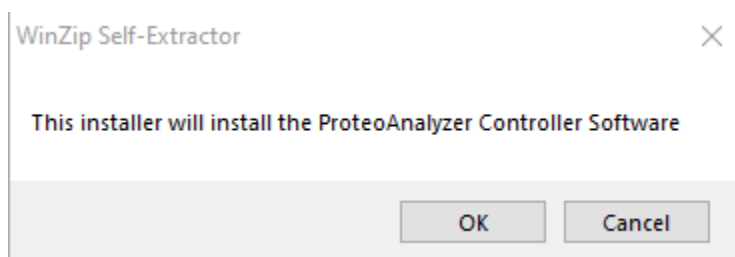
5. Select the 'Download Revision 1.0.0.12 (68MB)' icon to download.

6. Open the 'ProteoAnalyzer controller software installer and drivers V_1.0.0.12' to locate the 'ProteoAnalyzer controller software installer.exe'.

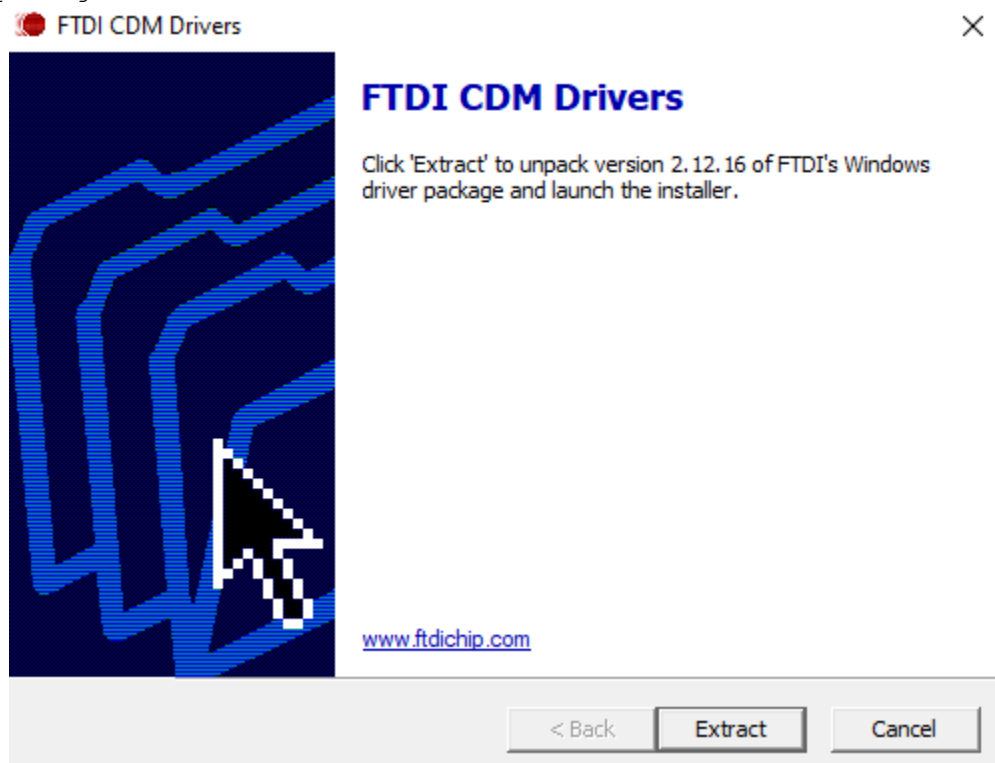
7. Double left-click on the 'ProteoAnalyzer controller software installer.exe'.

8. If a Windows security message appears, select 'Yes', to allow the program to make changes on the computer.

9. When the following window appears select 'OK' to open a self-extracting zip file.

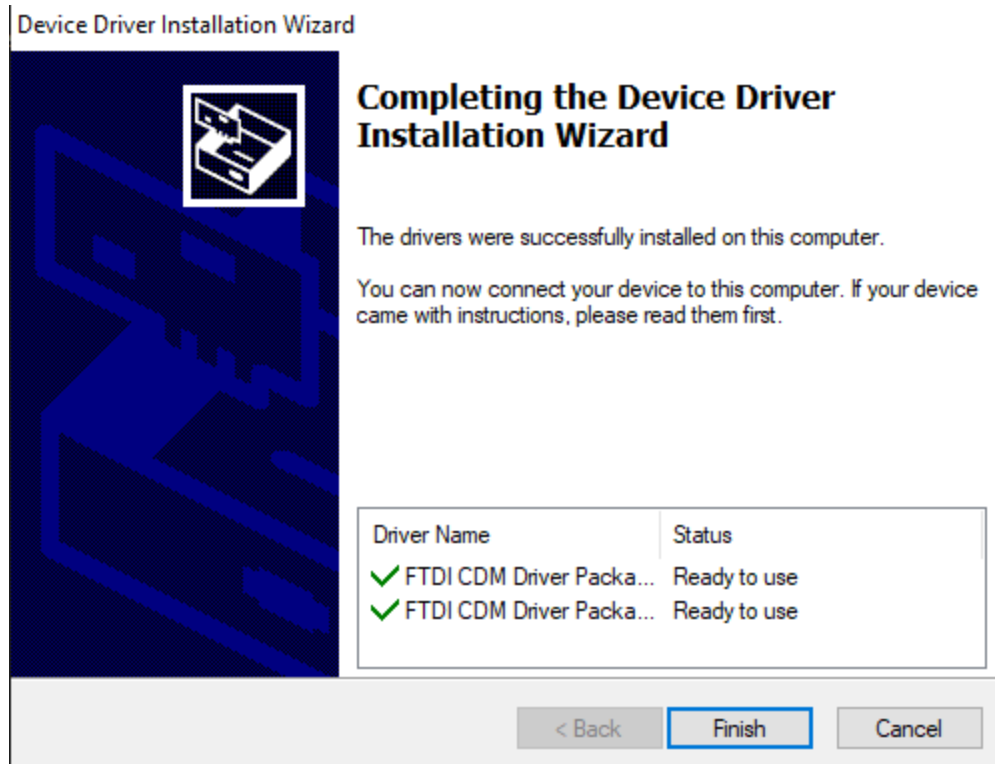


10. When the following window appears select 'Extract' to unpack the FTDI driver package.

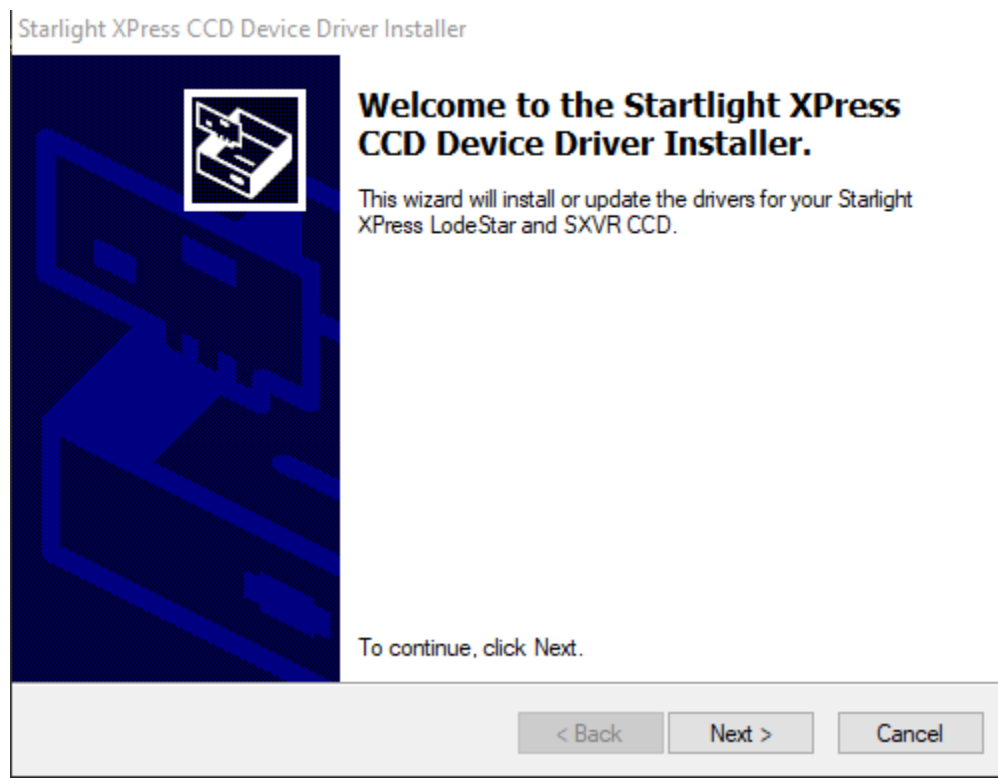


11. Select 'Next' to continue the installation, whenever needed.

12. Once the FTDI drivers have been successfully installed, you will see the following window indicating the device driver is installed and is ready to use. Click 'Finish' to finish the installation.

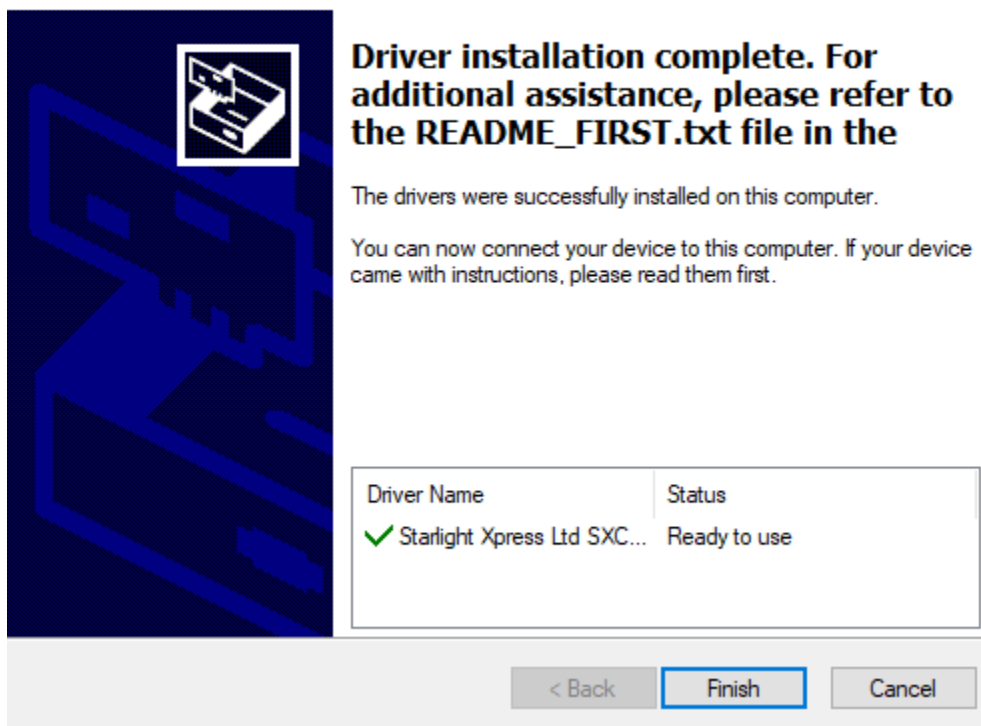


13. When the following window appears select 'Next' to begin installing the Starlight XPress CCD Device Driver.

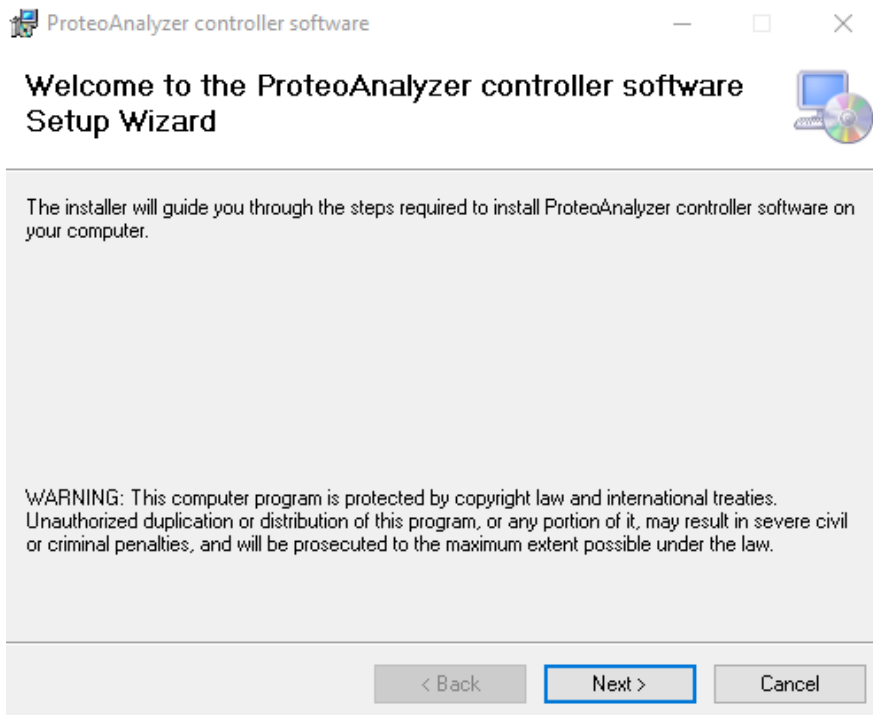


14. Once the Starlight Xpress CCD driver has been successfully installed, you will see the following window indicating the device driver is installed and is ready to use. Click 'Finish' to finish the installation.

Starlight XPress CCD Device Driver Installer

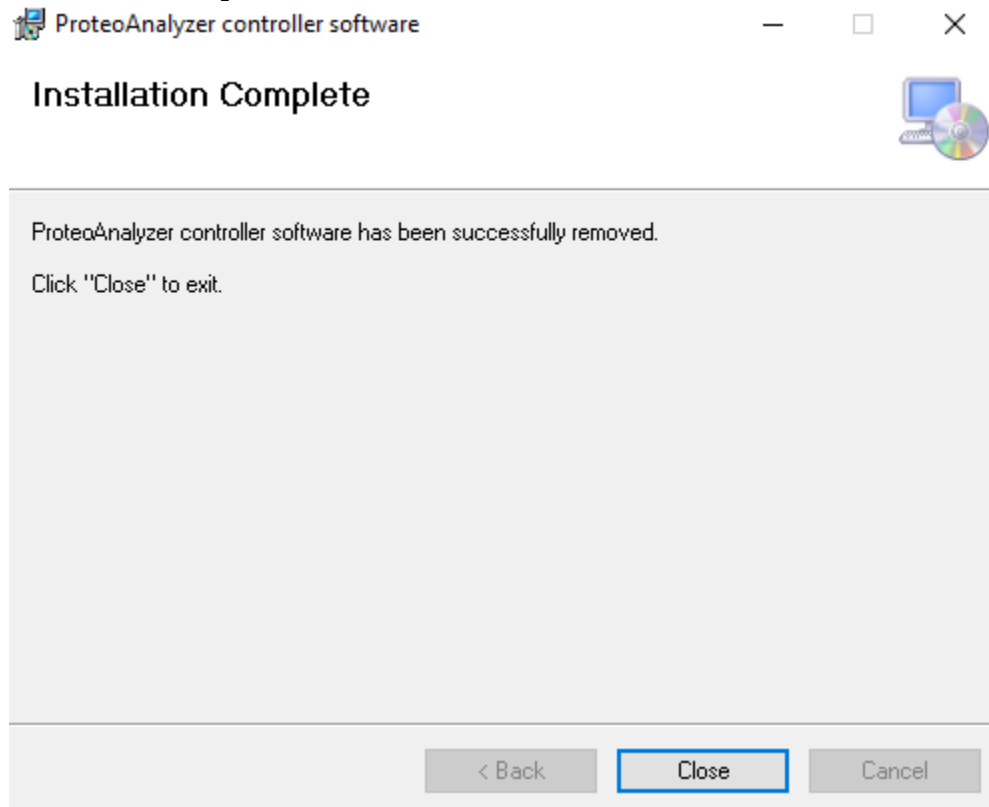


15. When the following window appears select 'Next' to begin installing the ProteoAnalyzer controller software.



16. Select 'Next' to continue the installation, whenever needed.

17. Once the ProteoAnalyzer controller software has been successfully installed, you will see the following window indicating the software is installed and is ready to use. Click 'Close' to finish the installation.



18. Re-start the PC to ensure successful software installation.

3.2 Uninstall Instructions

If after installing the ProteoAnalyzer controller software, you find it necessary to remove the software from your computer, perform the following steps:

Uninstall instructions for Windows 10:

1. From the settings panel, open 'System' and 'Apps & features'.
2. Select '**ProteoAnalyzer controller software**' from the list of apps that can be uninstalled by Windows.
3. Click on the 'Uninstall' button to uninstall the ProteoAnalyzer controller software.

If you encounter problems whilst upgrading the ProteoAnalyzer controller software, please remove the existing ProteoAnalyzer controller software installations. If this does not resolve the installation issues, please use the tool contained in the link below or set up the laptop with recovery media.

http://support.microsoft.com/mats/Program_Install_and_Uninstall/
© Copyright 2021 Agilent Technologies, Inc. Use, reproduction, and
distribution are subject to approval of Agilent Technologies.