

Agilent WinGPC Software Export Options

Introduction

This technical overview describes several options for exporting files from Agilent WinGPC Software, enabling measurement or results to be approved or filed.

Experimental

Generally, entire WinGPC Software (main) windows can be printed as reports, figures that can be copied into the windows clipboard, or data contents that can be exported as ASCII files.

Print standard reports (embedded into WinGPC Software, not editable)

Standard reports are available for the following windows: Method, Raw Data, Elugram, MWD, Calibration, Systemtest, Data Editor and, if the respective WinGPC Add-Ons are present, Viscometry, Light Scattering, and 2D/3D.

The procedure is always the same: Activate the desired window and find Print... in the menu bar (either by clicking **File** or **<window name>**, whichever tab is furthest left). The printer dialog box then opens. To create PDFs, a PDF printer must be installed.

Apply Page Preview or click the related icon to display the preview of the printout (Figure 1). In Printer Setup, the user can toggle between Landscape and Portrait and change the output: Portrait prints the figure and text (including method details and results), while Landscape only prints the figure (Figure 2).

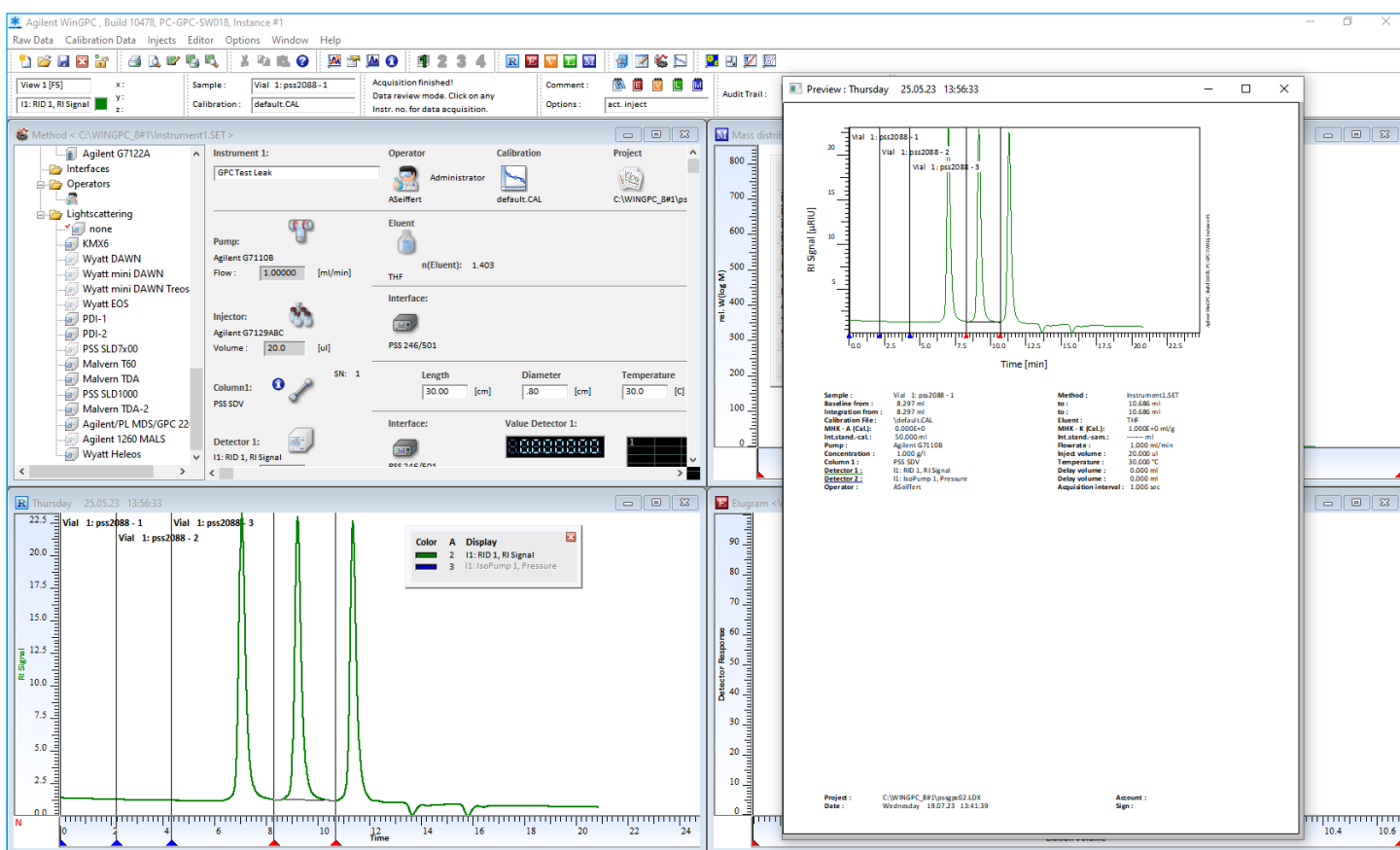


Figure 1. Page Preview window

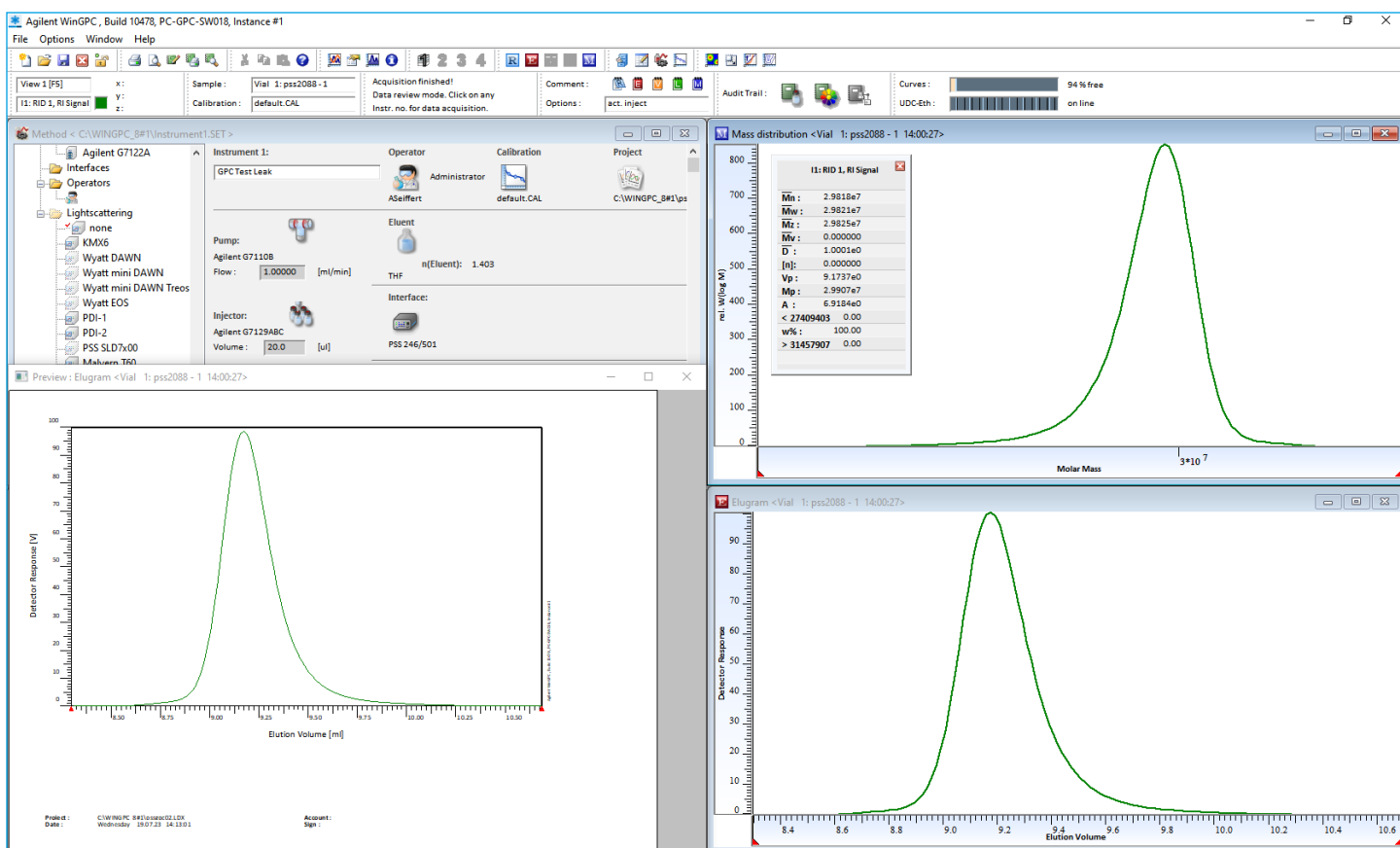


Figure 2. Page Preview window showing printout in landscape orientation

If multi-area settings are applied, the corresponding results are found on the second page of the Elugram window printout. Overlay mode affects both the Elugram and MWD window. The printouts will be changed automatically. WinGPC also recognizes when it is in HPLC mode and adds HPLC results independently.

Sample lists and the active sequence list can also be printed (by clicking the printer icon). For finished measurements, use the Raw Data window taskbar: click **Editor, Samples**, then **Print**. The WinGPC ReportDesigner allows for the creation of customized report layouts.¹ Output formats are also customizable, and include PDF and Excel file types.

Copy figures to the clipboard

Whenever the page preview is opened for one of the three main windows (Raw Data, Elugram, and MWD), a copy is also sent to the clipboard. This copy can be pasted as a graphic into a word-processing program. Depending on the page format that was applied previously, a single figure without text (e.g., raw data chromatogram) can be sent to the clipboard and pasted directly into text. WinGPC exports vector graphics to the clipboard, allowing the figures to be scaled without loss of resolution.

Export ASCII data

In the raw data menu bar, the user can click **Editor**, then **Slice Data** for the elugram. To access the MWD window, click **Options**, then **Editor Slice Data** (the same applies for the Visco and Light Scattering window). The current view is sent as an ASCII file to the WinGPC Data Editor. If the Data Editor does not open automatically, it can be brought to the front: click the ellipsis icon (left of the Method Window icon). Once the Data Editor is active, click **File**, then **ASCII export...**, and save the content as a .TXT file.

Use the options under Column, Separation by, and Decimal Sign or Lines, then Separation by to adjust the output format of the created ASCII text file (export filter). In the MWD window taskbar, click **File**, then **Save ASCII Report**. This function creates a text file that contains all chromatograms (from Raw Data and Elugram window) and molar mass distributions as ASCII data, together with method and calibration information and molecular weight averages. The multi-area and HPLC results will also be added when available.

Conclusion

There are various ways to extract data or entire files from Agilent WinGPC Software, whether by printing physical result reports, copying figures to a clipboard, or exporting files digitally. This technical overview has provided detailed guidance on how to carry out these export methods.

Reference

1. cf. Appl. [49], Newsletter 02/2011

www.agilent.com

DE40592289

This information is subject to change without notice.

© Agilent Technologies, Inc. 2023
Printed in the USA, July 21, 2023
5994-5943EN