

Add a Column to Improve GPC Resolution

Agilent PLgel 10 μm MIXED-B Columns

Technical Overview

Introduction

Resolution in GPC is improved by the addition of extra columns due to an increase in system efficiency and a decrease in the slope of the calibration curve. These effects are demonstrated in the separation of Agilent EasiCal polystyrene standards, on PLgel MIXED-B columns.



Agilent Technologies

PLgel 10 μm MIXED-B columns are designed for high MW polymer analysis and demanding eluent conditions. The PLgel 10 μm MIXED-B spans a wide range of molecular weights, up to 10 million, with a linear calibration curve. It is particularly useful for molecular weight distributions where slightly higher than average MWs are encountered. The 8–10 μm particle size provides good resolution with relatively low pressures for enhanced lifetimes in demanding conditions.

Conditions

Columns: (a) 1 x PLgel 10 μm MIXED-B,
300 x 7.5 mm
(b) 3 x PLgel 10 μm MIXED-B,
300 x 7.5 mm
(part number PL1110-6100)

Eluent: THF

Flow Rate: 1.0 mL/min

Detection: RI

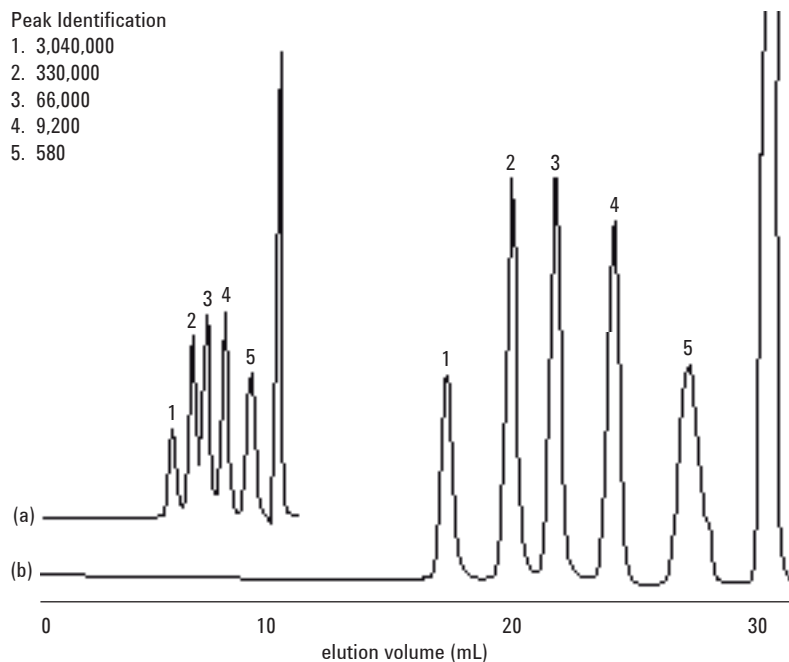


Figure 1. Separation of EasiCal polystyrene standards on PLgel MIXED-B columns

www.agilent.com/chem

This information is subject to change without notice.

© Agilent Technologies, Inc. 2010

Published in UK, September 24, 2010

SI-01761



Agilent Technologies