

# Simple GPC Column Calibration

## Agilent EasiCal Pre-prepared Calibration Kits

### Technical Overview

#### Introduction

EasiCal polystyrene standards make column calibration easy and convenient. The EasiCal system consists of two different combs, both with ten detachable spatulas supporting a mixture of five polymer standards. The thin film of polymer (approx 5 mg) on the tip of the PTFE spatulas rapidly dissolves when immersed in eluent to provide two GPC/SEC calibration solutions. There are two polystyrene EasiCal versions: PS-1 (Mw range 580-7,500,000) and PS-2 (Mw range 580-400,000). They can be used with any GPC system or column.

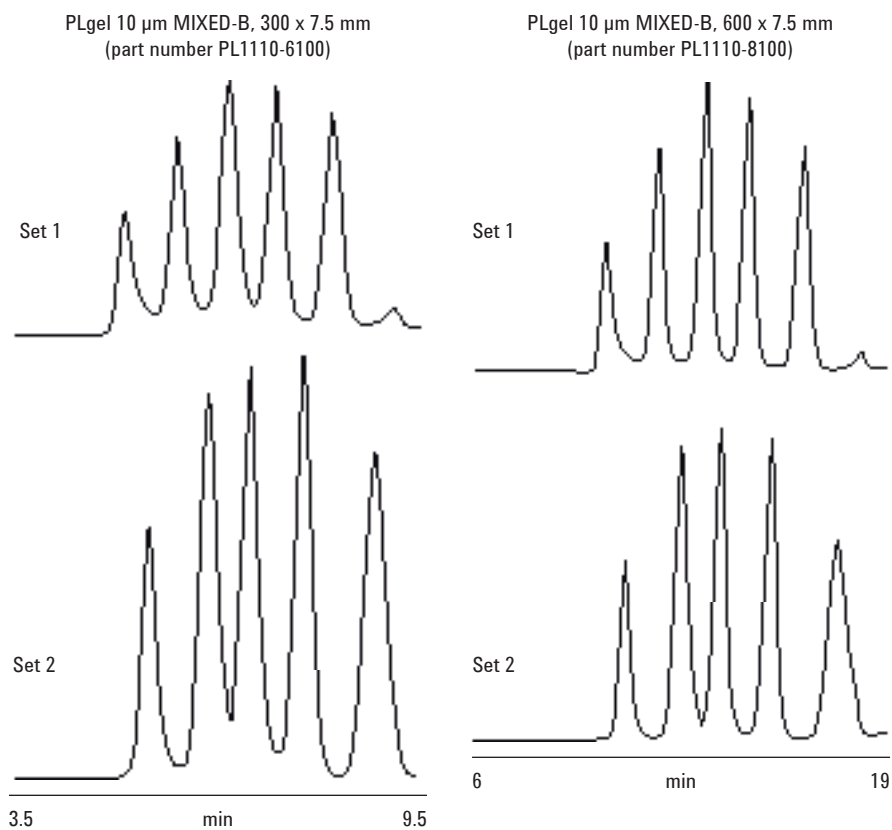


**Agilent Technologies**

**Conditions**

Eluent: THF  
Flow Rate: 1.0 mL/min  
Concentration: 0.05%  
Detection: UV, 254 nm

EasiCal Standards	
Set 1	Set 2
8,500,000	3,040,000
1,030,000	330,000
156,000	66,000
25,500	9,200
3,250	580



**Figure 1. PLgel 10 µm MIXED-B column calibration using EasiCal PS-1 pre-prepared calibrants**

[www.agilent.com/chem](http://www.agilent.com/chem)

This information is subject to change without notice.

© Agilent Technologies, Inc. 2010

Published in UK, September 24, 2010

SI-01760



**Agilent Technologies**