

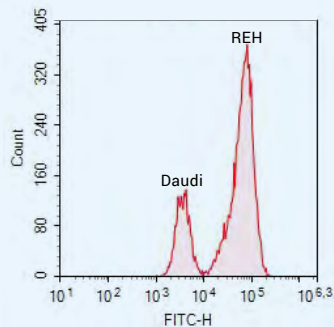
IntraStain enables the study of Intracellular Antigens by Flow Cytometry

IntraStain is intended for two-step fixation and permeabilization of single cell suspensions.

This procedure allows immunological detection of intracellular antigens while the cellular structure, morphologic light scatter, and cell surface immunoreactivity remain intact.

Cells treated with IntraStain can be identified in flow cytometry by their light scatter properties and surface marker expression, while simultaneously being analyzed for intracellular antigens.





Separation of populations of REH cells (positive) and Daudi cells (negative) after treatment with Agilent's Dako-branded TdT/FITC (product F7139) and IntraStain (product code K231111-5).

Data acquired using Agilent's Novocyte flow cytometer and analyzed by Novocyte Software after standard Intrastain protocol with TdT/FITC concentration of 50 µg/mL, 10 µL/sample.

Internal reference: HEH17577 sample 20.

Ordering information

	Product	Size	Code
IVD	IntraStain	100 tests	K231111-5

For more information, please visit:
www.agilent.com

Please contact us for more details:
rpsupport@agilent.com

This information is subject to change without notice.

© Agilent Technologies, Inc. 2022
29308 D66584_03 2022NOV08