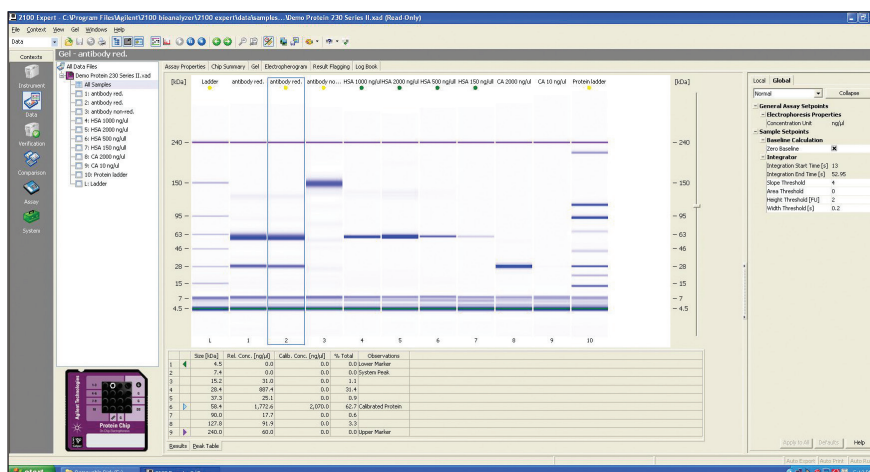


# Agilent 2100 Expert Software B.02.11 (SR1)



## Tested Configuration

### PC Hardware

Processor: Intel i5-1145G7  
(4.4 GHz)

Memory: 8 GB

Ports: 2 USB 3.1 ports

Display: Resolution of  
1920 x 1080 pixels

Hard disk: 500 GB

### PC Operating System

Windows 10 Professional

#### Notes:

- Not compatible with Bioanalyzer model G2938A.
- Compliance services are available for the following models of Bioanalyzer instruments: G2938B, G2938C, G2939A, and G2939B.

## Powerful Software for the Analysis of RNA, DNA and Proteins

The Agilent 2100 Expert Software is the single software solution created for the Agilent 2100 Bioanalyzer system. The latest revision B.02.11 (SR1) with improved performance supports all electrophoretic assays for the 2100 Bioanalyzer system with Windows 10 compatibility.

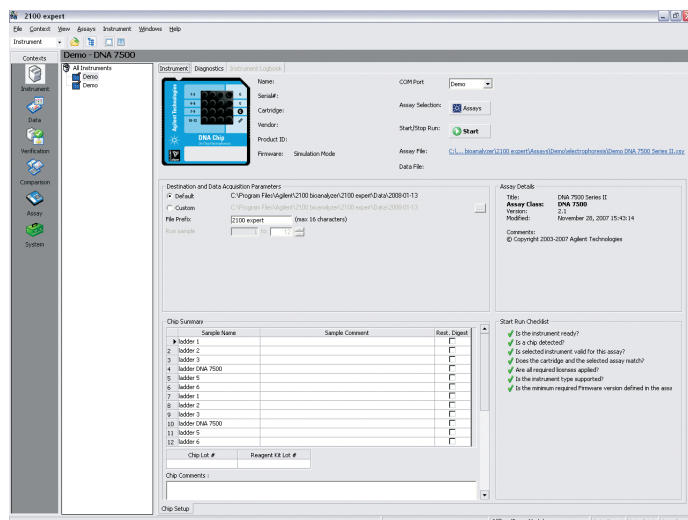
### Key Features

- Powerful data evaluation tools: Single platform for all assays, automatic and manual integration, smear analysis and many assay specific tools
- Instrument control for all Bioanalyzer RNA, DNA and protein assays
- Unique RNA Integrity Number (RIN) algorithm: The industry standard for unbiased total RNA integrity assessment, including the specific analysis of RNA from plants
- Easy to share: Free data review software enables offline evaluation and sharing
- Efficient: Integrated diagnostic and troubleshooting minimize system downtime
- Ready for compliance: System validation services (IQ and OQ) and 21 CFR Part 11 compliance with the optional Security Pack
- Color coded Result Flagging Tool: An easy-to-use, rule defined system for automated result display

# Features of 2100 Expert Software B.02.11 (SR1)

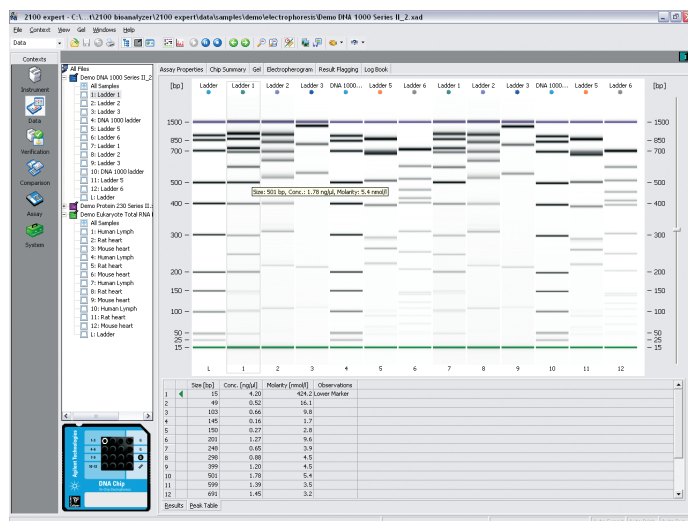
## Setup and start

Setup of samples, choice of assay and start of run is conveniently available from an intuitive user interface giving access to Agilent 2100 Bioanalyzer instruments.



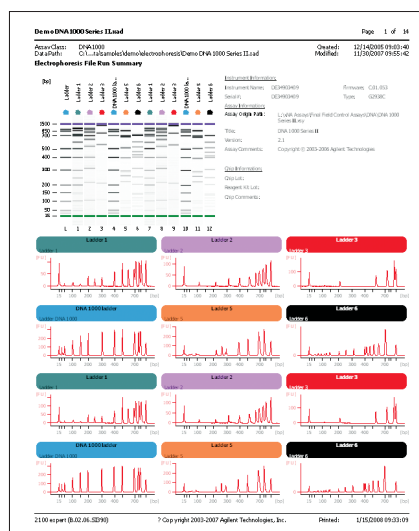
## Analyze and compare

Various graphical views, such as the gel-like format shown here, are supported by tables of additional information and facilitate easy analysis of results.



## Print reports

Reports can be configured easily by users to meet their individual needs. Color-coded flagging of results allows users to see at a glance whether specific results are within limits.



[www.agilent.com/genomics/bioanalyzer](http://www.agilent.com/genomics/bioanalyzer)

For Research Use Only. Not for use in diagnostic procedures.  
PR7000-7735

This information is subject to change without notice.

© Agilent Technologies, Inc. 2021  
Printed in the USA, September 1, 2021  
5991-7890EN