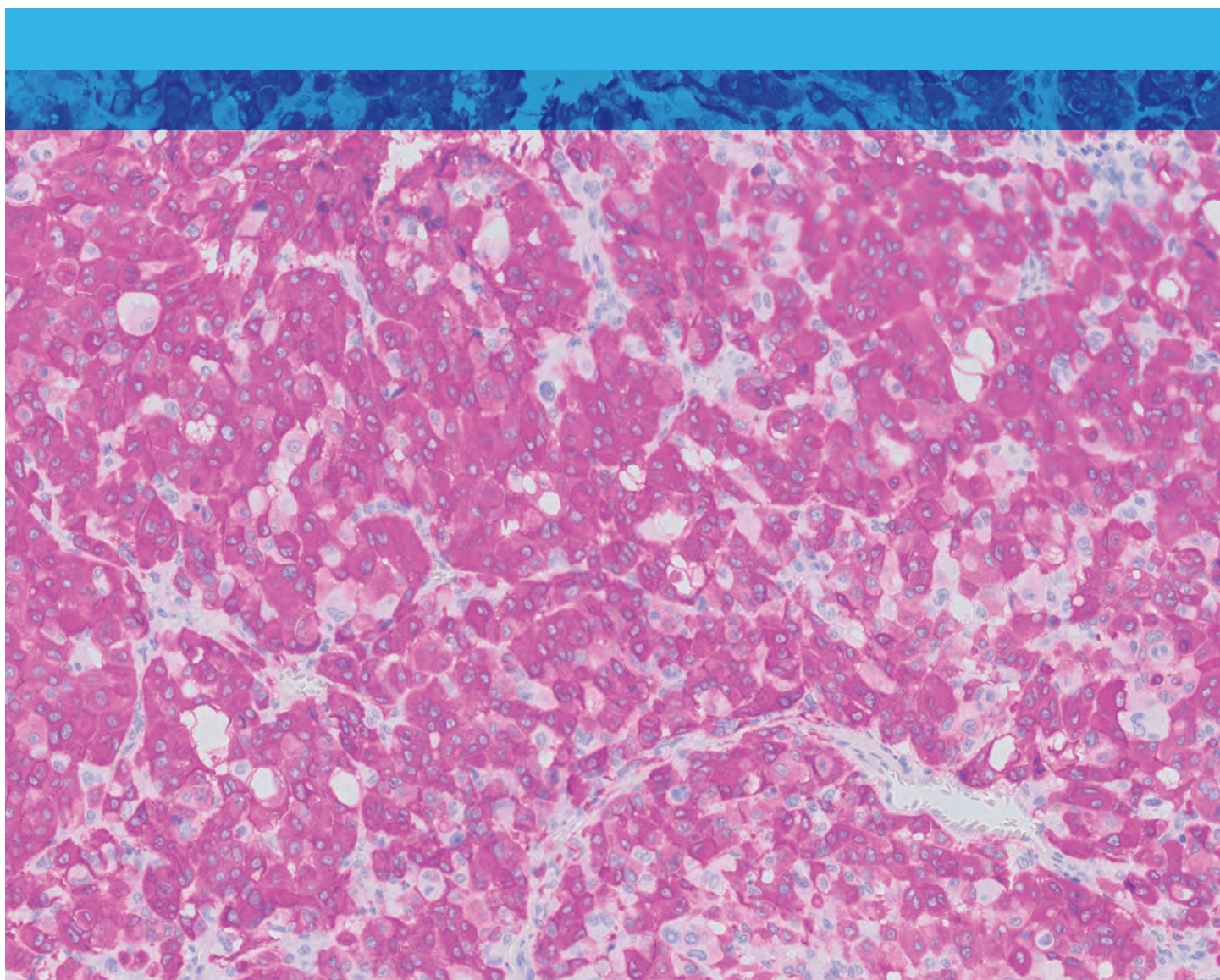


Revolutionary 'Red' and Confident Double Staining

HRP Magenta Chromogen for Agilent Dako Omnis



Unique chromogen for the EnVision FLEX family on Dako Omnis

HRP Magenta complements the brown color obtained with DAB chromogen and enhances image analysis. HRP Magenta offers:

- Clear, distinct staining
- High contrast, vibrant color
- Visible details

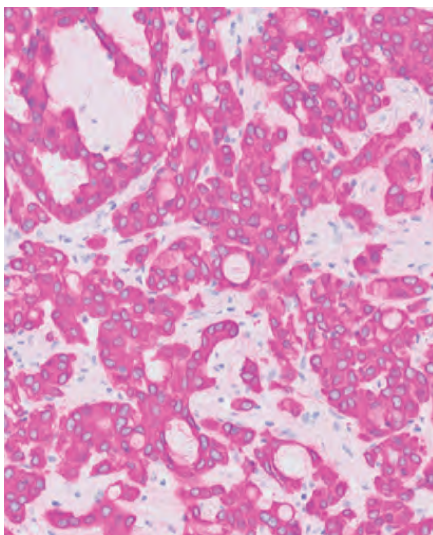


Figure 1. Adenocarcinoma of the lung. Stained with Anti-Cytokeratin 7.

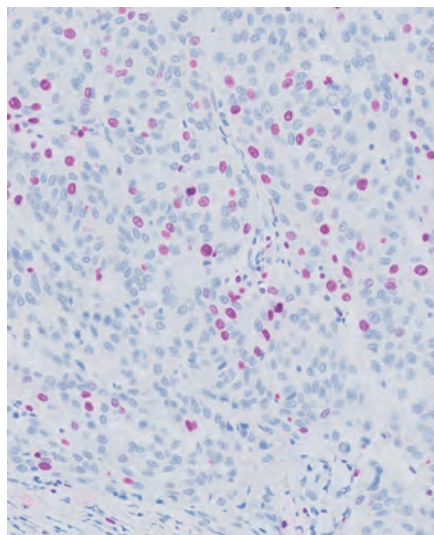


Figure 2. Melanoma. Stained with Anti-Ki-67.

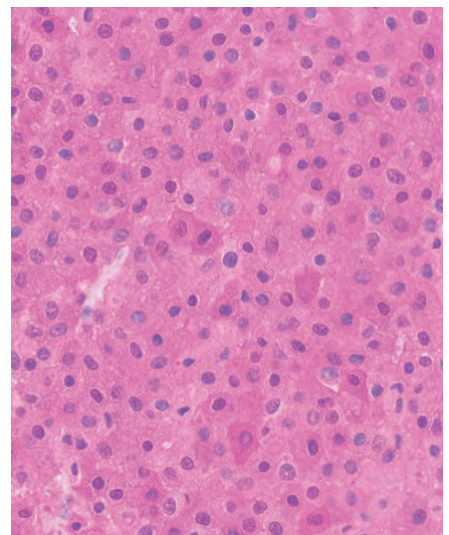


Figure 3. Melanoma. Stained with Anti-S100.

Why is HRP Magenta unique?

HRP Magenta is a proprietary Agilent invention. Derived from a well-known chromogen used for many years in other industries, the molecule has been chemically modified to fit perfectly into HRP-based visualization on Dako Omnis. The stable structure of HRP Magenta offers:

- Intense, transparent color that also makes HRP Magenta ideal for image analysis
- Stains that can be permanently mounted



EnVision FLEX and Dako Omnis: Technology You Know and Trust

Dako Omnis

Expanding the EnVision FLEX product family with additional chromogen for Dako Omnis

- Built on the same enzymatic reaction
- Fully compatible with EnVision FLEX family of products
- In single-color stainings, simply replace DAB with HRP Magenta as a new component in the reaction, meaning only one additional vial that integrates seamlessly

EnVision FLEX System

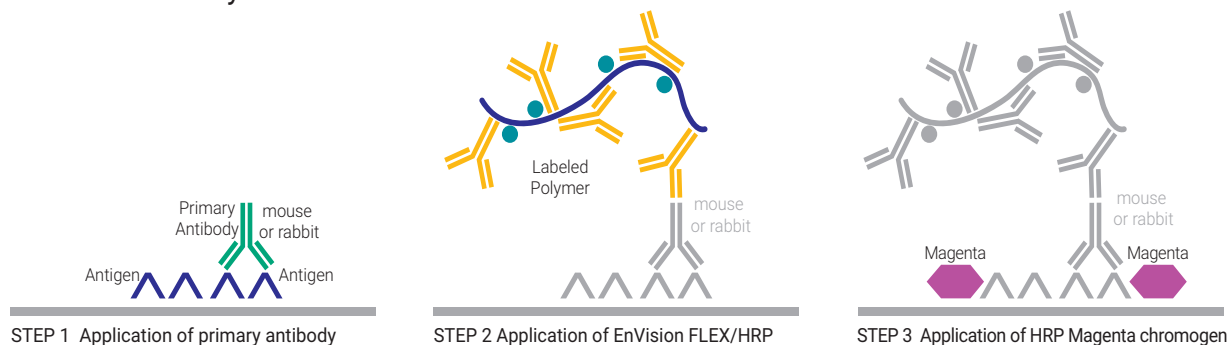


Figure 4. EnVision FLEX System with HRP Magenta chromogen

Continual enhancement of your laboratory workflow with the Dako Omnis solution

Like the entire Dako Omnis solution, HRP Magenta is designed to provide your lab with:

The ability to complete patient cases faster

- Two chromogens using one proven plug-and-play visualization system
- Integrate 'red' testing into your routine IHC workflow with an average turnaround time of just 2.5 hours
- Run cases as they arrive in the lab enabling faster time to case completion

A flexible and LEAN workflow

- Maintain instrument capacity by using only one additional reagent position
- One workflow with two different chromogens, and no need to sort by color reduces hands-on time

Consistent, high-quality staining you can trust

- Built upon a well-known, high-quality visualization system
- Clear contrast and visible cellular details support easy assessment

HRP Magenta: Enabling Confident Patient Diagnosis



HRP Magenta offers a crisp, clear contrast

As a contrast to hematoxylin and pigmentation in tissue, the high-intensity staining and color nuance make HRP Magenta an excellent complementary color for your stains.

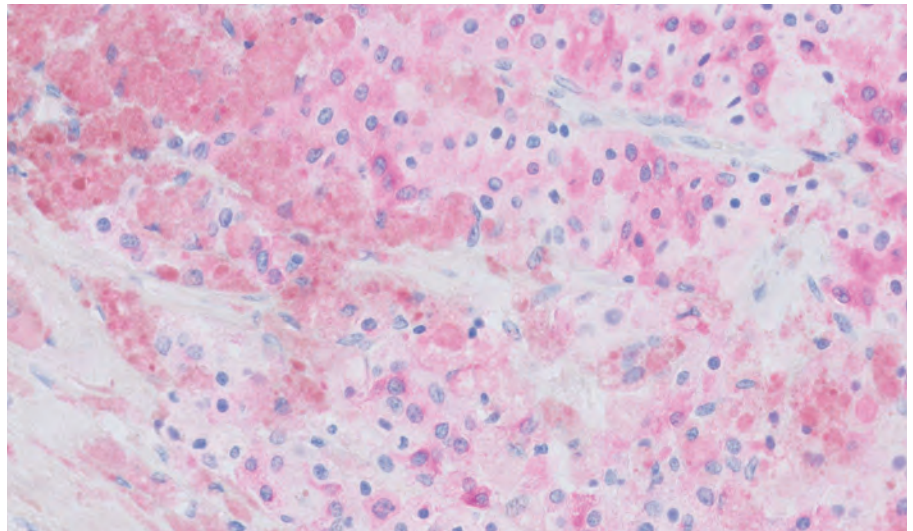


Figure 5. Melanoma, stained with Anti-Melan-A. Picture shows melanoma cells and macrophages with pigmentation.

See inside like never before

Unlike many other chromogens, HRP Magenta is transparent, yet still clearly visible and intense. Nuclei are easily identified and all details are visible.

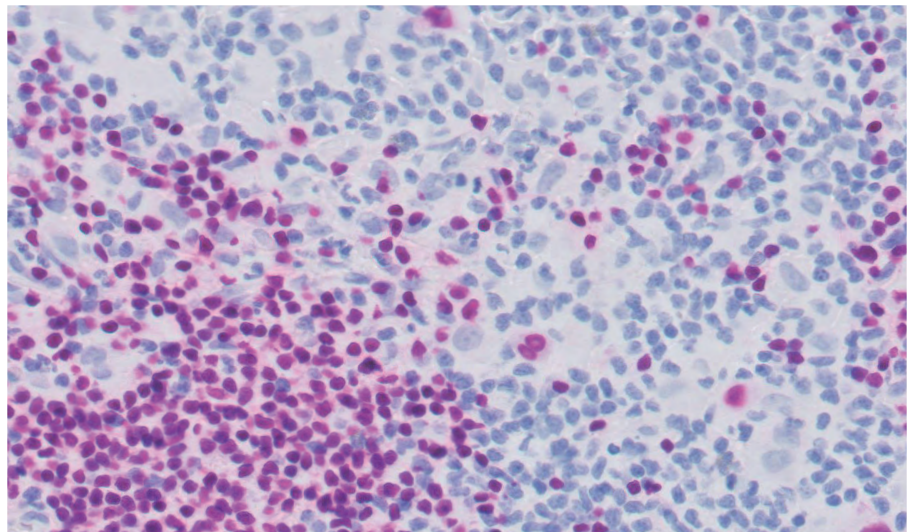


Figure 6. Hodgkin lymphoma. Stained with Anti-B-Cell-Specific Activator Protein. Picture shows B-cells and isolated Reed-Sternberg cells.

Be certain with HRP Magenta for Dako Omnis

- Superior cellular details
- Excellent contrast and morphology
- Crisp, clear staining supports easy assessment

High sensitivity and easy recognition of tissue structures

HRP Magenta is both sensitive and specific. A clear presentation of the tissue is maintained, allowing pathologists to recognize tissue structures and cellular features.

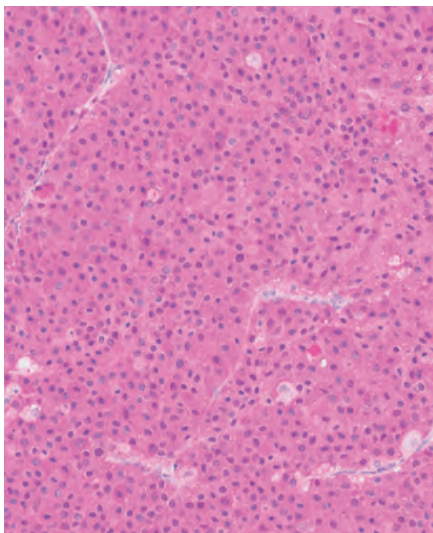


Figure 7. Melanoma. Stained with Anti-S100.

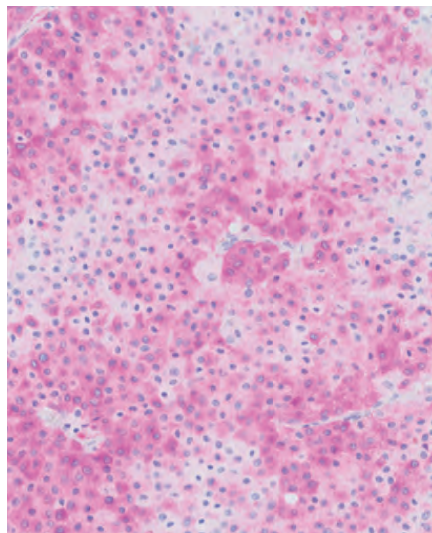


Figure 8. Melanoma. Stained with Anti-Melan-A.

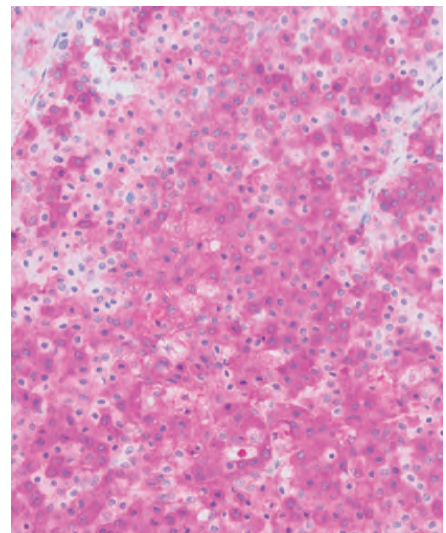


Figure 9. Melanoma. Stained with Anti-Melanosome.

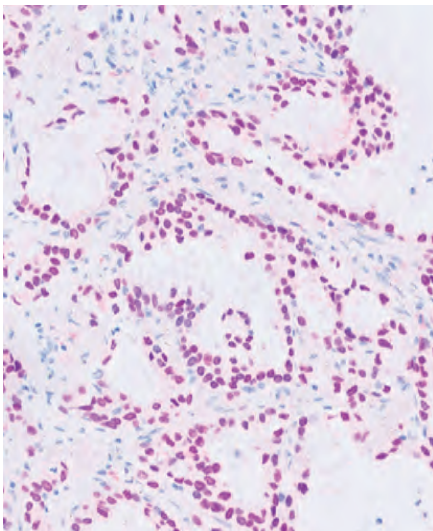


Figure 10. Adenocarcinoma of the lung. Stained with Anti-Thyroid Transcription Factor (TTF-1).

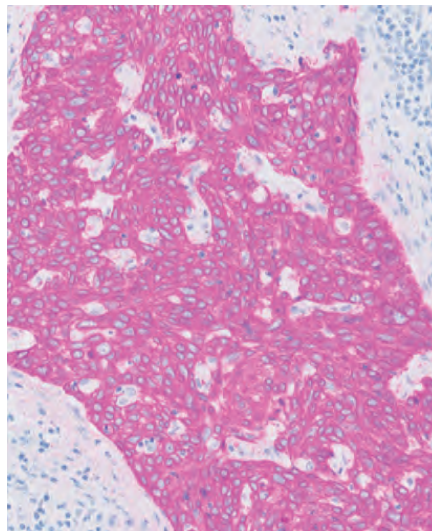


Figure 11. Squamous cell carcinoma of the lung. Stained with Anti-Cytokeratin 5/6.

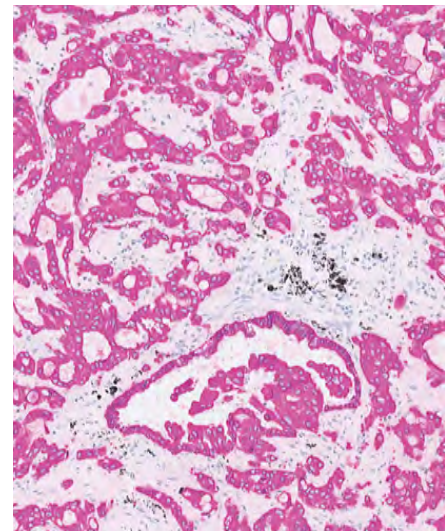
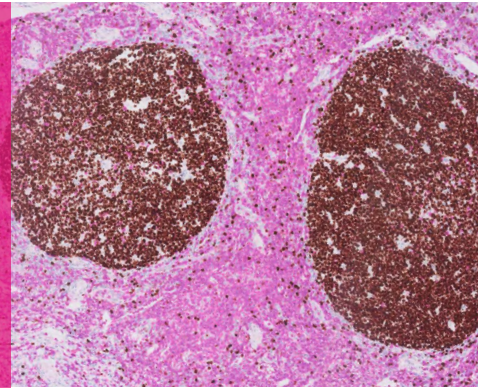


Figure 12. Adenocarcinoma of the lung. Stained with Anti-Cytokeratin 7.

Double Staining with HRP Magenta



Fully automated, sequential double staining enables clear visualization of two targets in the same tissue section with excellent contrast and transparency

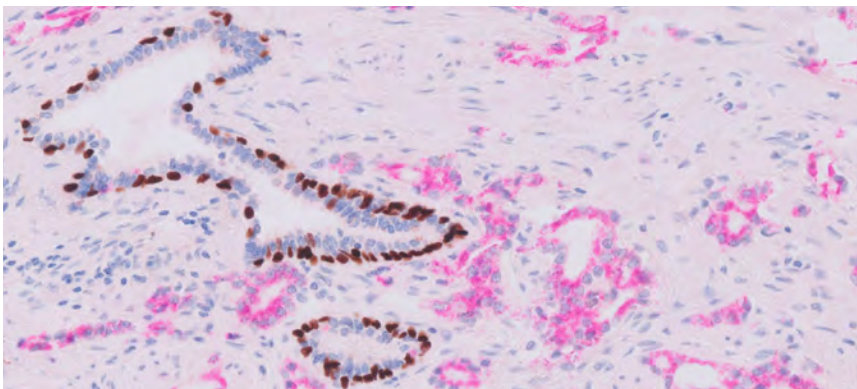
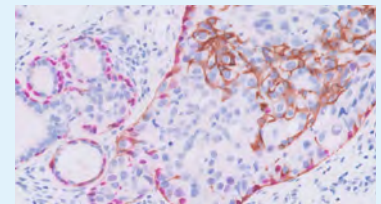


Figure 13. Prostate adenocarcinoma. p63 (DAB, nuclei): Expressed in the nuclei of the basal epithelial cells of nonneoplastic prostatic glands which are surrounded by adenocarcinoma. Not detected in malignant cells. AMACR (Magenta, cytoplasm): Expressed in the cytoplasm of invasive adenocarcinoma cells and prostatic intraepithelial neoplasia (PIN). Not detected in normal cells.

Sequential double staining on Dako Omnis addresses several daily workflow challenges in pathology labs

- Make informed diagnostic decisions by running fewer slides from a limited sample
- Confident diagnosis with localization of different antigens in relation to each other
- Full automation on Dako Omnis reduces hands-on time



Breast tissue

p63 (Magenta, nuclei): Expressed in nuclei of the basal epithelial/myoepithelial cells of nonneoplastic ductal tissue and in the preserved basal epithelium of ducts with neoplastic growth.

CK 5/6 (DAB, cytoplasm/membrane): Focal mosaic-like expression in benign intraductal, proliferative cells surrounded by ductal carcinoma in situ (DCIS – negative for CK 5/6).

Header image: Tonsil

Ki-67 (DAB, nuclei) expressed in germinal centers.

CD3 (Magenta, cytoplasm) expressed in cytoplasm and membranes of T cells in the mantle zone.

High-quality IHC results using two chromogens

A voice of customer survey showed that three out of four customers assessed quality of double stains with HRP Magenta and DAB as excellent, and the vast majority of labs reported double stain turnaround time as good and meeting their expectations. Please see figure 14.¹

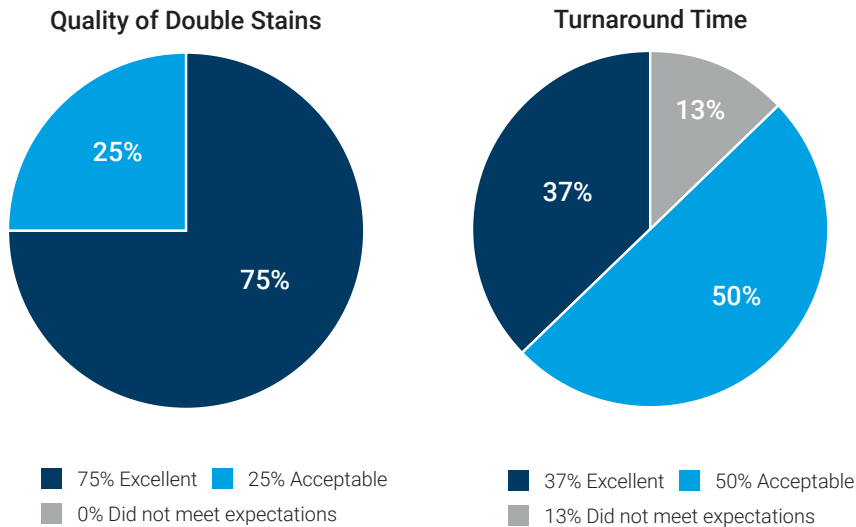


Figure 14. Data from voice of customer survey on the quality and speed of double IHC staining on Dako Omnis.

Strong impact on laboratory workflow

The study further showed that double IHC staining on Dako Omnis can have a strong positive impact on a laboratory's workflow and help achieve more results with fewer resources.¹

Double staining on Dako Omnis

- Increases slide capacity without additional instrumentation
- Has the potential to reduce patient case turnaround time
- Conserves patient tissue while maintaining the same diagnostic information
- Reduces hands-on time as fewer slides are handled
- Requires only two extra vials with limited impact on instrument reagent capacity

Access the Double Staining IHC white paper for more details on the study.

Reference

1. Double Staining IHC on Agilent Dako Omnis, **2023**, 29494.



<https://aglt.co/multiplex-wp>

Staining principle – sequential double staining

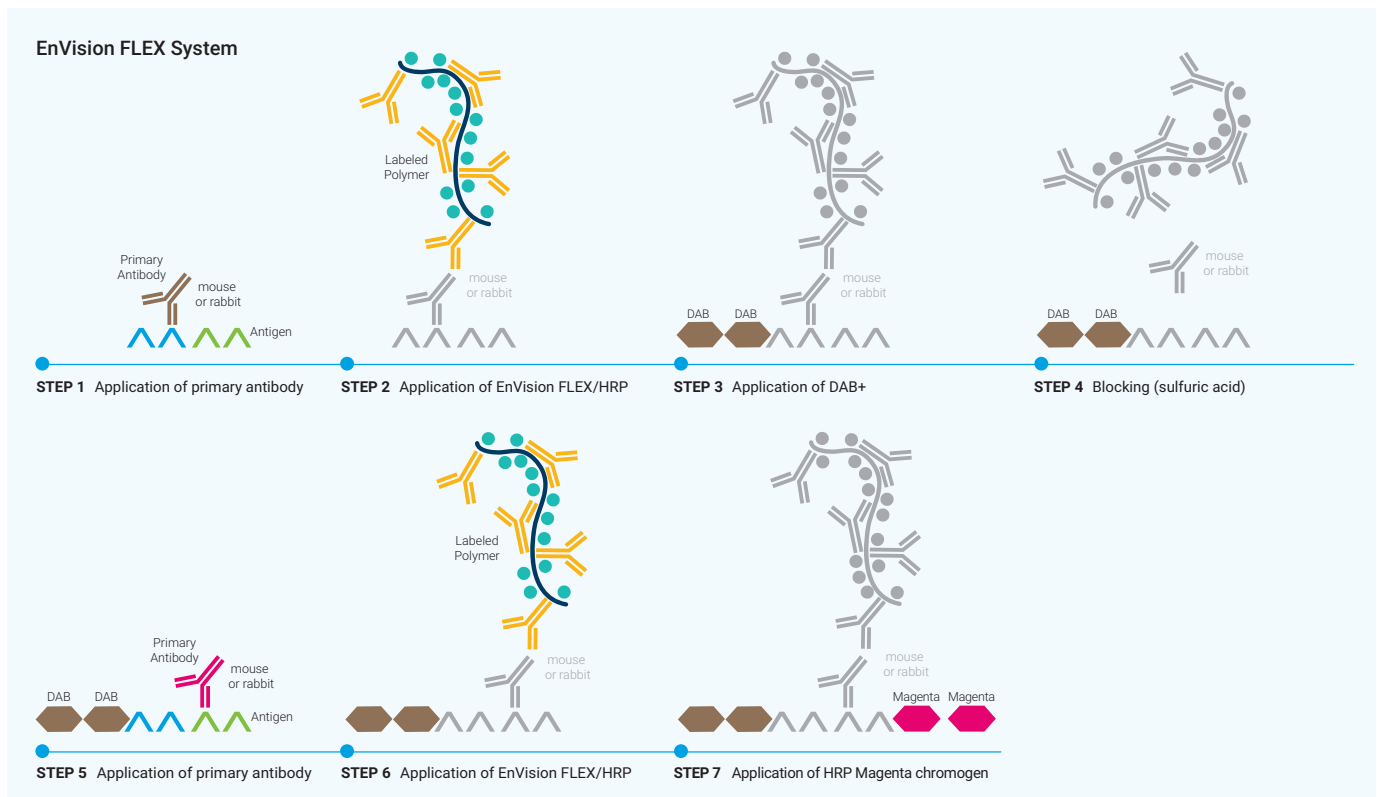


Figure 15. Sequential double staining is applicable with both EnVision FLEX and FLEX+ protocols.

Ordering information

Product Name	Code
EnVision FLEX HRP Magenta, High pH (Dako Omnis)	GV900
EnVision FLEX HRP Magenta Substrate Chromogen System (Dako Omnis)	GV925
EnVision FLEX DAB+ Substrate Chromogen System (Dako Omnis)	GV825
EnVision FLEX Mini Kit, High pH (Dako Omnis)	GV823
EnVision FLEX, High pH (Dako Omnis)	GV800
EnVision FLEX+ Mouse LINKER (Dako Omnis)	GV821
EnVision FLEX+ Rabbit LINKER (Dako Omnis)	GV809
EnVision FLEX Target Retrieval Solution, High pH (Dako Omnis)	GV804
EnVision FLEX Target Retrieval Solution, Low pH (Dako Omnis)	GV805

D74813_01

This information is subject to change without notice.

© Agilent Technologies, Inc. 2018, 2023
Published in the USA, April 12, 2023
29233 2023MAR24