

**Errata Notice**

This document contains references to PSS or Polymer Standards Service. Please note that PSS is now Agilent. This document will be republished as an Agilent document in the future.



**WinGPC  
Applications**

POB 3368  
Phone: +49-6131-96239-0  
D-55023 Mainz  
www.polymer.de

**POLYMER  
STANDARDS  
SERVICE GmbH**

**PSS**

**WinGPC  
Newsletter  
02/03**

applicable for: PSS WinGPC Version 4 and higher

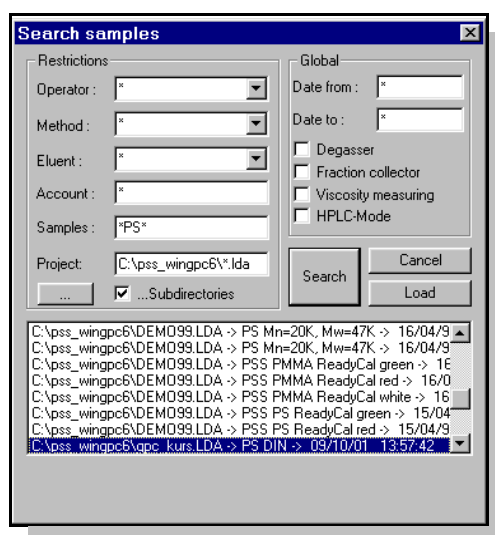
Application # 22

## The WinGPC sample database for fast sample retrieval

PSS WinGPC saves all data automatically in a sample database. Besides the sample name all relevant run parameters like conditions, method, operator are saved with the sample. Even the complete calibration curve is saved. This concept has several advantages for the user:

- all data are stored where they belong. It is not possible to overwrite important information needed for data evaluation.
- sample names can be used several times. Calibration standards or validation standards can be named the same all the time without the danger of overwriting. They are of course still unique according to injection time and date.
- customers can search for samples. WinGPC allows the use of the wildcard character \* therefore only limited information is required to find the proper sample.

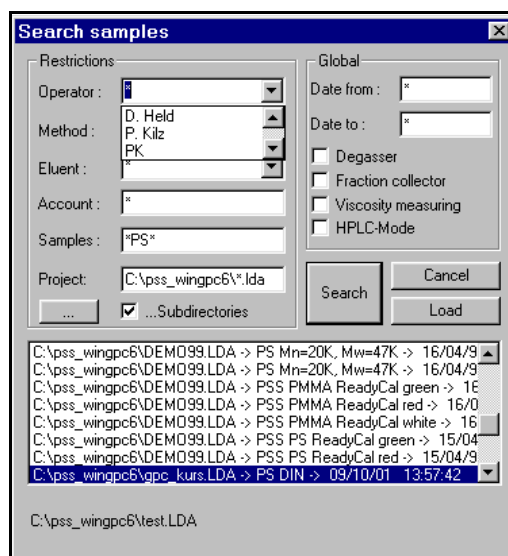
Picture 1 shows the window where you can enter the search options. When you open the window by clicking with the left mouse button in the white area behind sample field in the status bar, you will either see all fields filled with \* or the results of the last search. To find e.g. all samples with a "PS" in the sample name enter \*PS\* in the field behind sample. Choose the appropriate drive/folder using the button [...] and activate the option [subdirectories] if necessary. Press the [search] button to start the search.



Picture 1: search samples with a PS in the sample name

WinGPC displays the files it is searching in in the bottom left corner. All samples containing a "PS" are then shown in the list box. You can select the sample you are interested in and load it directly using the button [load] or you can make your search more precise by selecting an operator, the method or the solvent with which these samples should have been measured.

Therefore select the desired option by clicking on the listbox and perform the search again.



**Tip:** PSS WinGPC 6 added new functionality to the search routine: customers can now e.g. search for accounts. Therefore WinGPC can help you with statistics when you entered the account for every sample in the sample editor. Just search/type in the account you are interested in and WinGPC tells you how many samples you measured for that account. You can also use "date from:" and date to:" to select the time interval you are interested in.