

Agilent University Course Catalog

2019 Edition – Australia and New Zealand

Agilent
CrossLab
From Insight to Outcome



Agilent University

At Agilent University, you can find a wide range of learning options to meet the needs of your lab, optimizing productivity on your new or existing equipment.

Agilent Customer Education and Consulting Services helps by partnering and collaborating with you and your team to meet the requirements and desired outcome you seek.

We deliver:





- Innovative insights on Agilent instrumentation, software and consumables.
- World class training, method, and application services when and where you need it.

Investing for your future

Assign education dollars now for future training. Prepay for training credits, then use them for courses over the next 24 months.

- Simplifies budgeting
- Flexible planning
- Easy to track and redeem

Types of course delivery

 Classroom Training	Introductory level to in-depth, hands-on training for lab hardware or software held at Agilent University Training Facilities.
 Online Learning	From foundation to expert offerings when and where you need it at your own pace. Learn bite-sized fundamental concepts to fill up your knowledge gaps prior to attending a classroom course.
 Course Request	We can offer courses that are currently not scheduled in your area. Register your interest with us and we will place your name on a wait list.
 Customized Training	Customized training gives you the flexibility to structure your course with the information unique to your laboratory to create a highly effective training course targeted and relevant to your team.

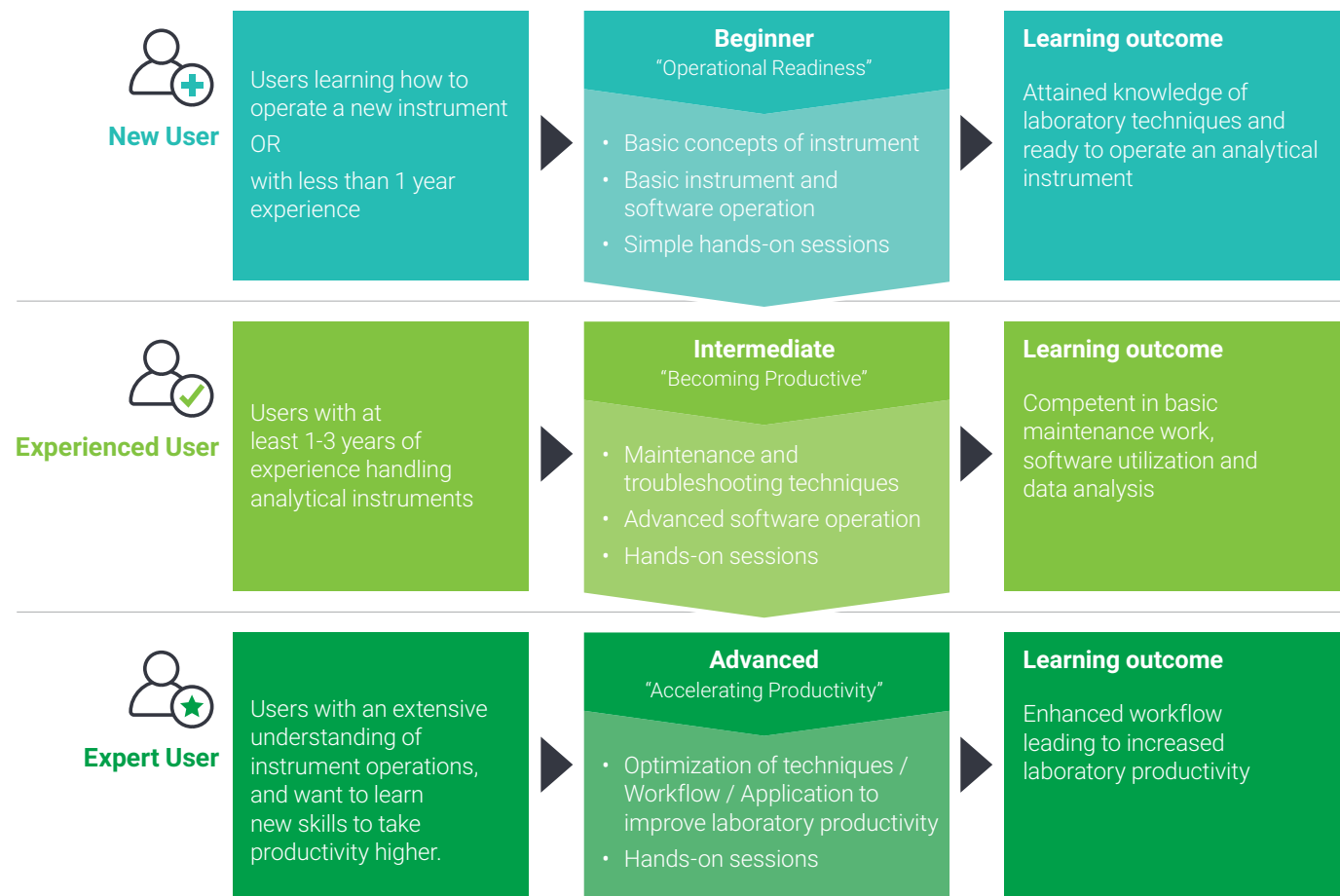
Agilent University Training Credits (TC)

Now you can plan and budget your training requirement with Agilent University Training Credits that enable you to assign training funds without having to choose specific dates, locations, or topics.

Agilent University Training Credits give you an ideal way to manage your training budget and ensure essential learning.

Agilent University

Your learning path



Proper training quickly leads to greater productivity and increases the value of your investment.

Achieving higher productivity through Education

Investments in continuous education is an essential step in achieving higher productivity. Our certified trainers ensure employees maximize the full potential of the instrument and gain insights into the latest technology.

A series of studies were conducted to measure the impact of education. Laboratory productivity data on their daily operation was collected before and after the training.

Results show that a well-trained employee will become more efficient and productive.

The Results



Studies also show that **90%** of students retain their knowledge and use it in their daily tasks

Business Impact



Time savings from operational tasks allow up to **↑28** more product releases per year



Correct column usage and care by trained employee enables extended column lifetime by **↑4.5** months



Proper usage of instrument from a trained employee reduced unexpected instrument downtime by **↓24** hours

* Case study results are based on a 6-month study over 4 individual laboratories.

What our satisfied customers are saying

The customized training was extremely relevant to our needs. Our instructor is very knowledgeable and skillful. He has greatly improved our understanding of the system.

Research Scientist | Oil & Gas Industry

The training we attended improves our knowledge of GCMS, data mining and quantitative analysis tremendously.

Forensic Chemist | Government Agency

I really like the training course because it helped me understand topics that I don't know and deepen my knowledge on the subject matter.

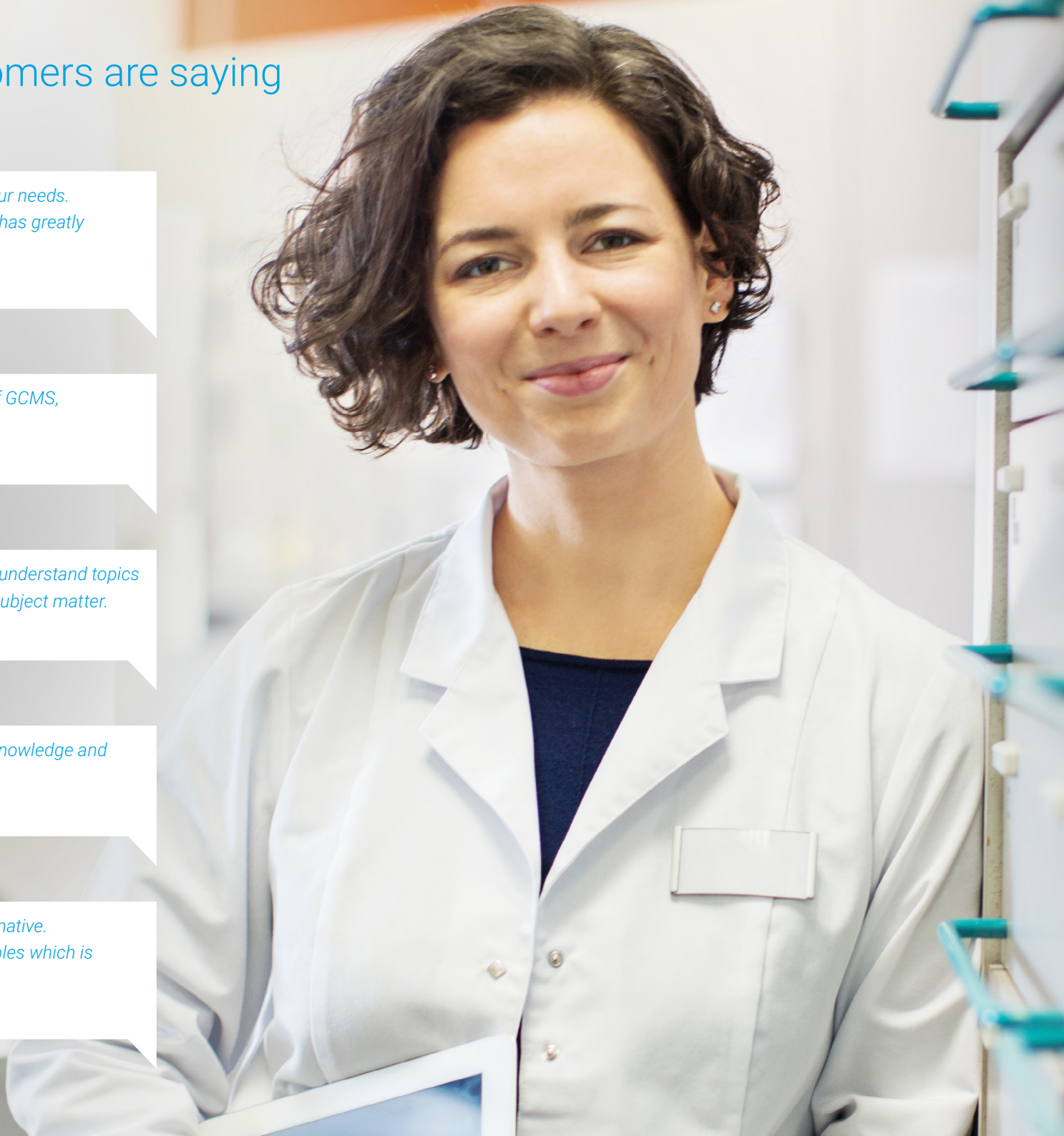
Chemist | Government Agency

The courses I attended imparted me with practical knowledge and tips on how to run and optimize the system.

Assistant Lab Manager | Academic Institution

The training course I've attended so far is very informative. The trainer provided good demonstration and examples which is related to our routine operation.

Technical Manager | Commercial testing laboratory



2019 Agilent University Classroom Course Calendar

Course Title				Course Code	Course Level	Training Credit	Course Fee^ (AUD)	Jan	Feb	Mar	Apr	May	Jun	Jul	Aug	Sep	Oct	Nov	Dec
Gas Chromatography																			
Practical Gas Chromatography - 4 Days				GC-0GEN-2000c	Intermediate	2000	3360			X								X	
Agilent 7890A/B GC & OpenLAB ChemStation Operation - 4 Days				GC-7890-2101c	Intermediate	2000	3360		X				X				X		
Agilent 7890A/B GC Maintenance & Troubleshooting - 2 Days				GC-7890-2202c	Intermediate	1200	2016					X				X			
Liquid Chromatography																			
Agilent 6400 Series QQQ LC/MS Techniques and Operation with MassHunter - 4 Days				LCMS-6400-2100c	Intermediate	4000	6720			X		X		X		X			
Agilent Q-TOF LC/MS Techniques & Operation for Small Molecules - 4 Days				LCMS-6500-2100c	Intermediate	4000	6720				X		X		X		X		
Gas Chromatography / Mass Spectrometry																			
Agilent 5977 GC/MS Techniques and Operation with MassHunter Data Analysis - 4 Days				GCMS-5977-2100c	Intermediate	2400	4032				X				X				
Agilent 7890B/5977 GC/MS Maintenance and Troubleshooting - 3 Days				GCMS-5977-2200c	Intermediate	1800	3024		X			X		X		X		X	
MassHunter GC/MS Data Analysis and Reporting - 2 Days				GCMS-MH-2100c	Intermediate	1200	2016			X			X				X		
Atomic Spectrometry																			
Agilent 7700 ICP-MS Techniques & Operation - 4 Days				ICPMS-7700-2100c	Intermediate	3200	5376				X							X	
Agilent 5100 Techniques for Simultaneous ICP-OES - 3 Days				ICPOES-5100-2000c	Intermediate	1800	3024		X					X					
General Courses																			
Understanding Peak Integration and Best Practices - 1 Day *NEW*				SW-OL-2140c	Intermediate	500	840	Please contact Agilent for course schedules											
Analytical Method Validation - 2 Days *NEW*				LAB-0GEN-3090c	Advanced	1600	2688	Please contact Agilent for course schedules											
Software Courses																			
OpenLAB CDS ChemStation System Suitability in Practice - 1 Day *NEW*				SW-OL-2130c	Intermediate	500	840	Please contact Agilent for course schedules											
Application Courses																			
Agilent Mass Profiler Professional (MPP) Workshop - 3 Days				SW-MPP-3100cV2	Advanced	3000	5040		X						X				

Legend  Theory  Hands-on  Software

* Minimum/Maximum number of attendees may effect scheduled dates. ^ Course fee is exclusive of GST.
If you are interested in any other courses not listed here, please contact us.

General Training Information



From Insight to Outcome

Prerequisites

It is important to adhere to the prerequisites described in each course in order to ensure the best use of time and permit equal instructor attention to all class attendees.

Registration/Payment

All course schedules and course fees are subject to change without prior notice. Course fees include material and instrument usage (where applicable).

Registrations for scheduled courses can be made directly from the website:

www.agilent.com/chem/aucontact

A confirmation letter will be sent two weeks before class commencement.

Training Center Address

679 Springvale Road,
Mulgrave, Victoria 3170

Training Center

Agilent Technologies Australia
679 Springvale Road, Mulgrave, Victoria 3170

E: inquiry_lsca@agilent.com

W: www.agilent.com/crosslab/university/

Toll Free Number

Australia 1800 802 402
New Zealand 0508555344
Press 2 for Sales Enquiries
Press 3 for Service Sales

Cancellation/Refund Policy

Cancellation or rescheduling must be made at least 10 working days prior to start of the course to avoid a 50% billing fee to attendee. A one-day cancellation notification or non-attendance will result in full billing. Agilent reserves the right to cancel any course 10 working days prior where minimum enrollment is not met. The purchase of non-refundable airline tickets is NOT recommended due to possible class cancellations.

Rescheduling Policy

In the event that a paying attendee must reschedule a registered course (rescheduling will include substitution by another person), he/she must notify Agilent Technologies at least 10 working days before class commencement. Efforts will be made to place the attendee in the next available class.

There will be a 50% billing fee if rescheduling notice is received less than 10 working days before class commencement.

For attendees taking the complimentary course, less than 10 working days of notice for rescheduling is not allowed and will result in the complimentary training being forfeited.

Class Times

- Registration begins at 9.00am on the first day of class.
- Class runs from 9.00am to 5.00pm each day.

Prices

Prices are listed on the Agilent customer training website. These prices are subject to change without notice.

Course Request

If you are interested in a course that is not currently scheduled, or if a course is not offered in your area, please contact our Training coordinator and place your name on a wait list.

Customized Courses

Depending on your specific training requirements, Customized training classes can be organized at your facility or at Agilent. Please contact our Training Coordinator to find out more.

Overseas Attendees

The purchase of non-refundable airline tickets is not recommended due to possible course cancellations. Please do not make any travel arrangements before receiving course confirmation from the Training coordinator.

This information is subject to change without notice.