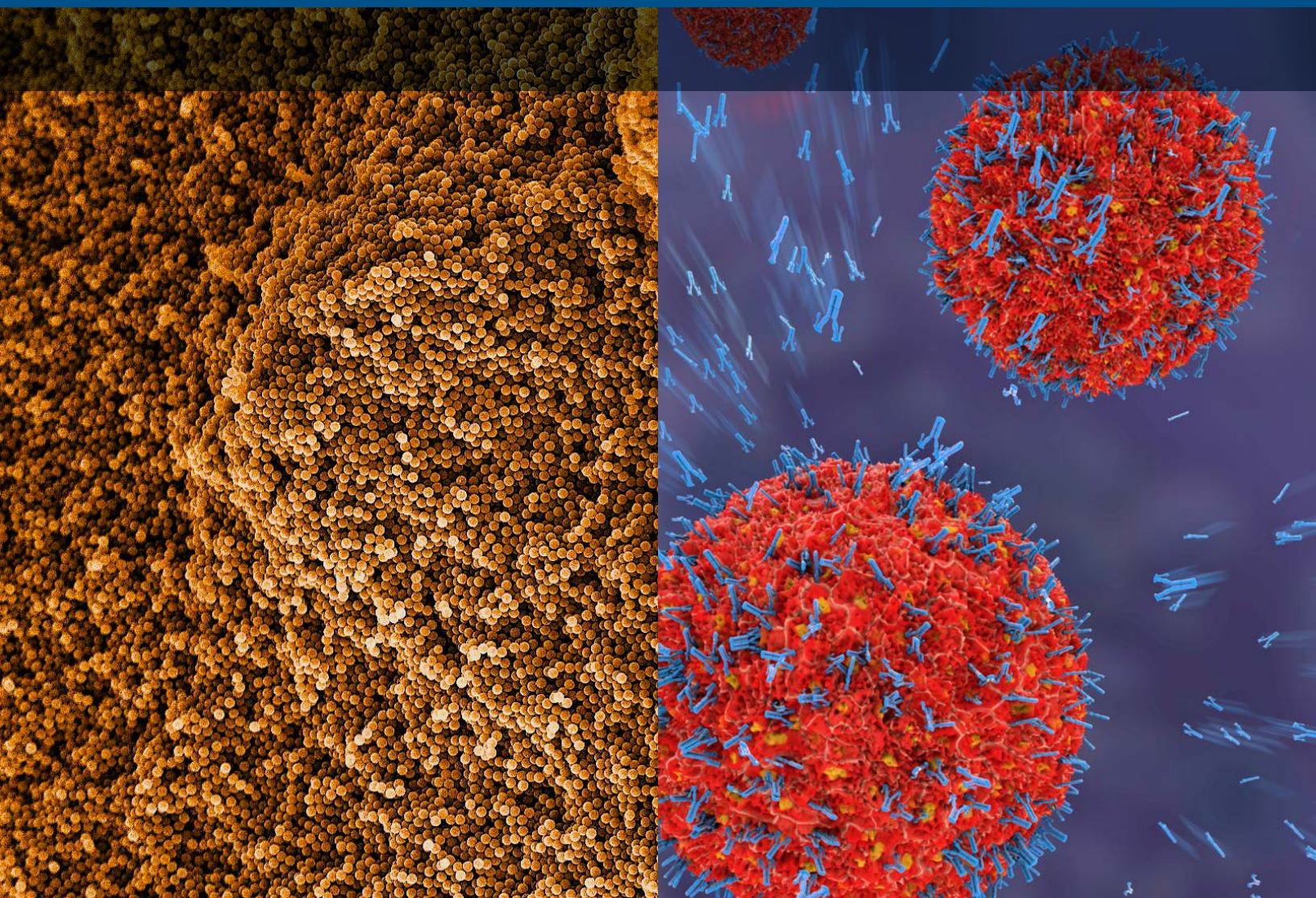


# Consolidate Your Supply of Critical Raw Material for Assay Development

A One-stop Solution of Antibodies, Beads, and Much More



# Your Trusted Partner in Immunoassay Development and Production

With our versatile product lines and extensive scientific know-how, Agilent can help immunoassay manufacturers in many aspects.

Choosing Agilent as a partner is already a solid step to success, due to extensive benefits including:

- One-stop shop for multiple raw materials and solutions
- Robust and extensive quality management
- Streamlined and efficient global supply chain
- Worldwide reach with factories and logistic centers

## Our Solutions and Services Include







## Agilent Beads Support Billions of Assays Every Year

The importance of developing fast, robust immunoassays, of the highest quality, has never been more relevant.

Beads or microparticles are critical raw materials in the assay manufacturing process and are a key component to meeting your challenges.

Agilent beads feature advances in particle design, coating, and performance that combine with manufacturing of the highest quality, reliable & efficient supply chain with a global logistics network. This makes Agilent the ideal partner in your assay development and production.

### State of The Art, Large Scale Manufacturing

- One of the leading suppliers of magnetic & non-magnetic microparticles to the immunoassay industry
- Manufacturer and developer of high technology polymer particles for over 40 years.
- Extensive expertise in large scale manufacture of magnetic particles and surface modification, with multi kilo lot size
- Continually improve the effectiveness of our management systems in conformance with internationally recognized standards (ISO9001, ISO13485) and using CI & Six Sigma practices.
- Significant investment in manufacturing technologies such as robotics & automation, AI, Data science & advanced materials to meet the future needs of our partners

### Agilent Raw Materials

#### Quality

Beads with demonstrated performance, manufactured reproducibly, to a robust process in an ISO 9001 facility.

#### Flexibility

Custom quality & supply agreements. Small to multi-kilo batch sizes.

#### Supply Chain

Scheduled deliveries and worldwide logistics minimize expense & risk, ensuring your beads are in the right place, at the right time.



## Agilent LodeStars Beads for Precise Magnetic Bioseparations

LodeStars are Agilent's proprietary high performance, superparamagnetic beads. Based on patented technology, they are a powerful magnetic bead platform for bioscience and life science applications. With unique particle architecture and a hydrophilic outer polymer surface, Agilent LodeStars offer reliable separation performance whilst being a fast, efficient and affordable solution to many bioscience applications.

LodeStars and LodeStars High Bind are both available with a Carboxyl or Streptavidin coupled surface. They are compatible in applications such as:

- Immunoassays
- Molecular assays
- DNA/RNA capture
- Cell separation
- Immunoprecipitation

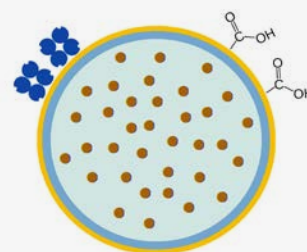
## Agilent PL-Latex Beads with High Uniformity and Reproducibility

Agilent PL-Latex beads are submicron uniform latex beads that are a raw material component in many assays. PL-Latex beads are used in applications where their uniformity of size, mobility, consistency of surface properties, and versatility deliver advantages over other solid supports. Applications of PL-Latex beads include:

- Slide agglutination, Nephelometry, Particle capture, Immunoturbidimetry & Microfluidics

Particles are available in a range of sizes, 50 to 1000 nm, carboxyl variants, and customization.

### Agilent LodeStars



- Highly selective ligand capture with controlled surface functionality.
- Excellent assay performance with low backgrounds.
- Rapid magnetic response.
- Uniform, mono-dispersed, particles with batch-to-batch reproducibility, highly controlled manufacture & quality management systems.
- Ideal for manual and automated applications.

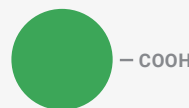
### HiDye Beads

PL-Latex beads are available in a range of colors (blue, red, yellow, green, and purple), offering all the features of the white beads with the added advantage of intense color. As the dye is not surface bound, it does not interfere with the binding of ligand.

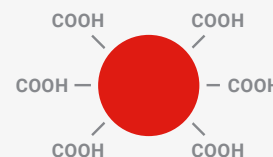
PL-Latex Plain



PL-Latex Carboxyl



PL-Latex SuperCarboxyl



## Antibodies & Assay Solutions

Agilent Technologies, a global leader in life science, diagnostics and analytical laboratory technologies, has built its reputation on innovation, expertise in engineering, knowledge and collaboration to bring unmatched, robust scientific solutions to the market. With the acquisition of Dako and its comprehensive antibodies portfolio and knowledge in the standardization of antibodies for clinical use, Agilent Technologies will continue to raise the standards within diagnostics.

Built on more than 50 years of experience, our business of antibodies & assay solutions has established lasting partnerships worldwide with partnering companies, ranging from large multinationals to smaller manufacturers and commercial laboratories specializing in the fields of *in vitro* diagnostics, biotechnology and pharmaceuticals.

We are represented by a global sales force that offers excellent customer service standards to our partners. Projects are coordinated by experienced key account management teams thus providing smooth planning and timely completion. We are dedicated to providing scientific advancement, certainty and building lasting partnerships with our customers.



100+

countries with Agilent's footprint

50+

years of experience,  
quality and service

120+

successful B2B partnerships

## Polyclonal Antibodies

A legacy of over 50 years makes Agilent Dako rabbit polyclonal antibodies unique. Our products have dispelled conventional concerns over polyclonal antibodies, providing highly consistent performance with low lot-to-lot variation. The advanced manufacturing technique and strict quality management system also create other valuable benefits: high titer, high specificity, high affinity, and low non-specific bindings.

## Monoclonal Antibodies

We produce a wide range of monoclonal mouse antibodies. Each antibody has been carefully selected on the basis of its value, making it ideal for further development and production. Most of our monoclonal antibodies are produced in cell cultures, which has several advantages such as lack of background noise as the majority of the mouse immunoglobulin molecules are directed against the target antigen. The antibodies are also extensively screened on relevant biological material to ascertain that they possess the necessary specificity and give consistent and strong labeling reactions.

## Solutions

Our polyclonal and monoclonal antibodies are optimized to be used in development and production of immunoassays in multiple applications, including:

- Turbidimetry & nephelometry immunoassays (e.g. Cystatin C & Lipoprotein(a) etc.)
- Chemiluminescence immunoassays (CLIA) (e.g. Insulin & C-peptide etc.)
- Enzyme-linked immunosorbent assays (ELISA) (e.g. IgG, IgM & IgA etc.)
- Immunogel electrophoresis assays (e.g. Kappa & Lambda etc.)
- Lateral flow assays (e.g. Rabbit anti-DNP & Streptavidin-Dextran 500 etc.)
- Point-of-care testing assays (e.g. C-reactive protein, HbA1c & Troponin I etc.)

*For Research Use Only. Not for diagnostic procedures.*

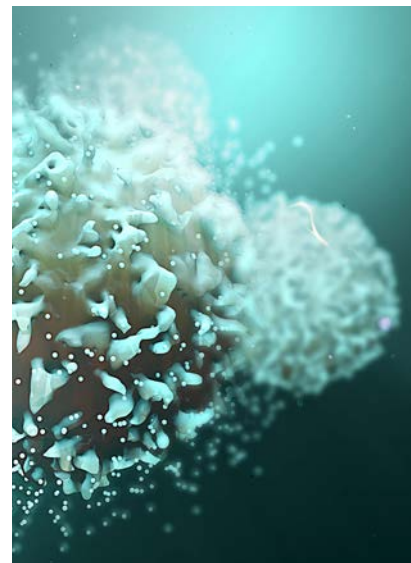
For more information on our Antibodies & Assay Solutions, please visit:  
[https://www.agilent.com/cs/library/catalogs/public/18269%20Catalog\\_OEM\\_2020-21.pdf](https://www.agilent.com/cs/library/catalogs/public/18269%20Catalog_OEM_2020-21.pdf)

For more information on our antibody products for serological assays, please visit:  
[https://www.agilent.com/cs/library/brochures/29304\\_serological\\_assays\\_begin\\_with\\_quality\\_antibodies\\_D60543.pdf](https://www.agilent.com/cs/library/brochures/29304_serological_assays_begin_with_quality_antibodies_D60543.pdf)

For more information on our Magnetic & non-magnetic beads, please visit:  
[www.Agilent.com/en/promotions/beyondbeads](http://www.Agilent.com/en/promotions/beyondbeads)

Please contact us for more details:  
For Antibodies and Assay Solutions: [rpsupport@agilent.com](mailto:rpsupport@agilent.com)  
For Beads products and Assay solutions: [beads@agilent.com](mailto:beads@agilent.com)

This information is subject to change without notice.



## Scientific Support

We have a broad team of experienced scientists who are dedicated in troubleshooting and providing assay solutions. We treat our customers as partners, which means you will have premium access to our scientific support in your assay development process beyond just raw material supply. The team is always ready to collaborate with you on the next exciting project.