



Agilent MSD with OpenLab CDS

Quick Start



Notices

© Agilent Technologies, Inc. 2022

No part of this manual may be reproduced in any form or by any means (including electronic storage and retrieval or translation into a foreign language) without prior agreement and written consent from Agilent Technologies, Inc. as governed by United States and international copyright laws.

Edition

First Edition, November 2022

Manual Part Number

G7077-90049

Agilent Technologies, Inc.
5301 Stevens Creek Boulevard
Santa Clara, CA 95051

Warranty

The material contained in this document is provided “as is,” and is subject to being changed, without notice, in future editions. Further, to the maximum extent permitted by applicable law, Agilent disclaims all warranties, either express or implied, with regard to this manual and any information contained herein, including but not limited to the implied warranties of merchantability and fitness for a particular purpose. Agilent shall not be liable for errors or for incidental or consequential damages in connection with the furnishing, use, or performance of this document or of any information contained herein. Should Agilent and the user have a separate written agreement with warranty terms covering the material in this document that conflict with these terms, the warranty terms in the separate agreement shall control.

Technology Licenses

The hardware and/or software described in this document are furnished under a license and may be used or copied only in accordance with the terms of such license.

Restricted Rights Legend

U.S. Government Restricted Rights. Software and technical data rights granted to the federal government include only those rights customarily provided to end user customers. Agilent provides this customary commercial license in Software and technical data pursuant to FAR 12.211 (Technical Data) and 12.212 (Computer Software) and, for the Department of Defense, DFARS 252.227-7015 (Technical Data -Commercial Items) and DFARS 227.7202-3 (Rights in Commercial Computer Software or Computer Software Documentation).

Safety Notices

CAUTION

A CAUTION notice denotes a hazard. It calls attention to an operating procedure, practice, or the like that, if not correctly performed or adhered to, could result in damage to the product or loss of important data. Do not proceed beyond a CAUTION notice until the indicated conditions are fully understood and met.

WARNING

A WARNING notice denotes a hazard. It calls attention to an operating procedure, practice, or the like that, if not correctly performed or adhered to, could result in personal injury or death. Do not proceed beyond a WARNING notice until the indicated conditions are fully understood and met.

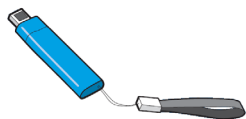
Welcome to the Agilent MSD System

Your system includes:

- The popular **Agilent 597x Series MSD** featuring advanced technology, increased analytical abilities, and reduced maintenance requirements. The 5977C MSD is shown here. Your system may be equipped with the 5977C, 5977B, 5977A, or the 5975 MSD.
- One of Agilent's reliable, accurate, and precise Gas Chromatograph systems, such as the **Agilent 7890, 8890, or 9000 GC**. The Agilent 8890 GC, shown here, has advanced separation abilities, self-monitoring intelligence, faster oven cool-down, and robust backflushing.



- A complete **GC and GC/MS Hardware Library** with manuals and videos that explain how to install, operate, maintain, and troubleshoot your system. See **"Your GC and GC/MS Hardware Library"** on page 10 for how to install this library.



- The **Agilent OpenLab CDS Workstation Software** featuring a comprehensive portfolio of software manuals, videos, eFamiliarization, user applications, and method development tools for your system.

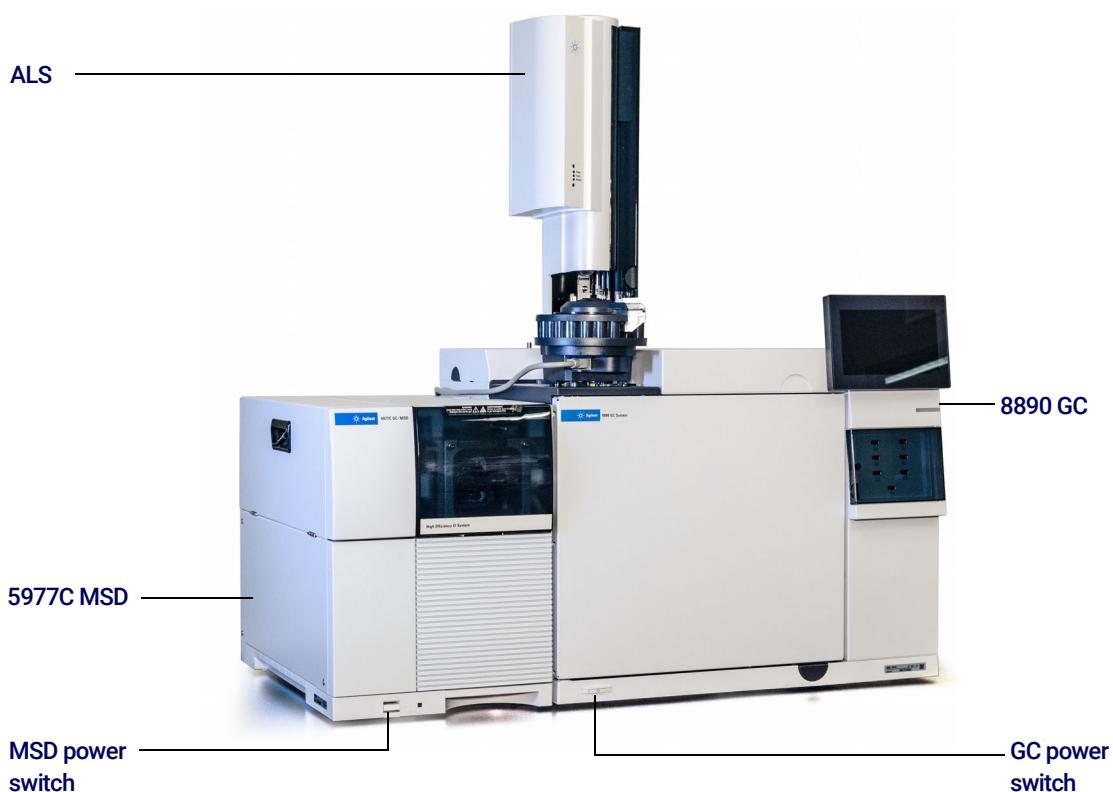


This book provides a brief summary of your system documentation and where to find it.

The Agilent 597x Series MSD

The **Agilent 597x Series MSD** includes the **5975, 5977A, 5977B, and 5977C MSD**. The 597x is a stand-alone capillary GC detector for use with an **Agilent 7890 Series, 7820 Series, 6890 Series, 6850 Series, 8890 Series, or 9000 Gas Chromatograph**. (The 5977C is pictured with a 8890 GC).

See the full library of hardware information available for your GC and GC/MS systems on the Agilent GC and GC/MS User Manuals USB. Refer to **“Your GC and GC/MS Hardware Library”** on page 10 for details on how to install and access this wealth of information.



The Agilent OpenLab CDS Workstation

Agilent OpenLab CDS software provides powerful and easy-to-use tools for data acquisition and analysis. Click **Status**, **Method**, **Single Sample**, or **Sequence** to access corresponding detailed screens. The one shown here is an example of what the 597x Method Editor screen will look like. Your screens will be customized to the exact instruments you have configured.

The screenshot displays the 'Acquisition Method – firstmethod.amx' editor window. The interface is divided into several sections:

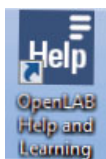
- General:** Includes 'Properties', 'Instrument Setup' (Agilent 7890B, MSD), and 'MSD'.
- Method:** Contains sub-sections for 'Acquisition', 'Chromatograms', 'Timed Events', 'Tune', 'Autotune', 'Advanced Autotune', 'Custom Tune', 'Manual Tune', 'Parameters', 'Acquisition', 'Maintenance', 'Vent/Pump Down', 'Bakeout', 'Purge Cal Valve', and 'Service'.
- Tune File:** Shows 'Tune file' (atune), 'Tune type' (EI), and 'Tune EM volts' (1200). It includes a table for 'Actual' vs 'Setpoint' values for Source and Quad temperatures.
- Detector Settings:** Includes 'Run time (min)' (10.0), 'Solvent delay (min)' (3.0), 'Trace ion detection', 'Electron multiplier (EM) mode' (Delta EM volts), 'Delta EM volts' (0), 'Applied EM volts' (1200), 'EM saver', and 'Limit' (Sum limit 1e8).
- Time Segments:** A table showing acquisition parameters for a scan at 3 minutes.
- Instrument Status:** A dashboard showing the status of the 78xx ALS, Agilent 7890B, and MSD. The 78xx ALS and MSD are 'Idle', while the Agilent 7890B is 'Online'. It includes a 'Front Inlet Flow Path' diagram and various sensor readings (e.g., 0 µA, 230°C, 0V, 0.0%, 1.11E-06 Torr).
- Online Signals:** A 'TestPlot' graph showing 'Signal Selection' vs 'Time (minutes)'. The y-axis ranges from -1 to 1, and the x-axis ranges from -55 to 0.

At the bottom, the status bar indicates 'Run 0.00 / 999.99 min', 'Instrument Idle', and 'Current user: admin, Active project: 5977B-7890B'.

OpenLab Help & Learning

Included with OpenLab CDS is a comprehensive portfolio of manuals, videos, getting started lessons, user application, and method development tools for your system.

You can access the Help in several ways:



Double-click the **OpenLab Help and Learning** icon on your desktop.

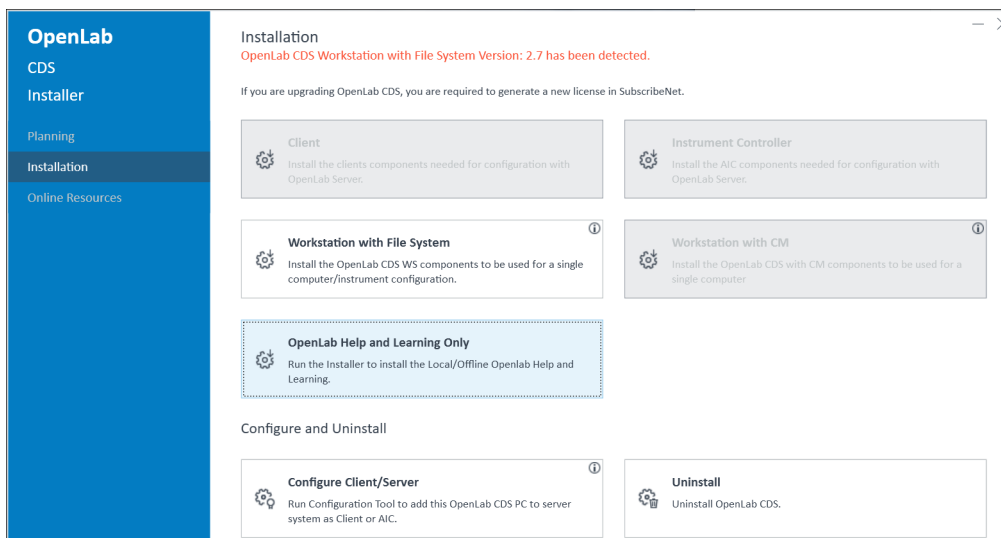


Press **F1** while in the software.



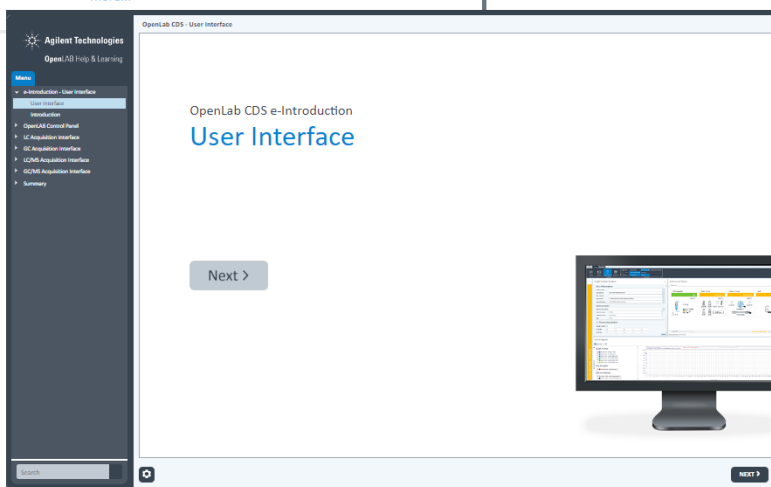
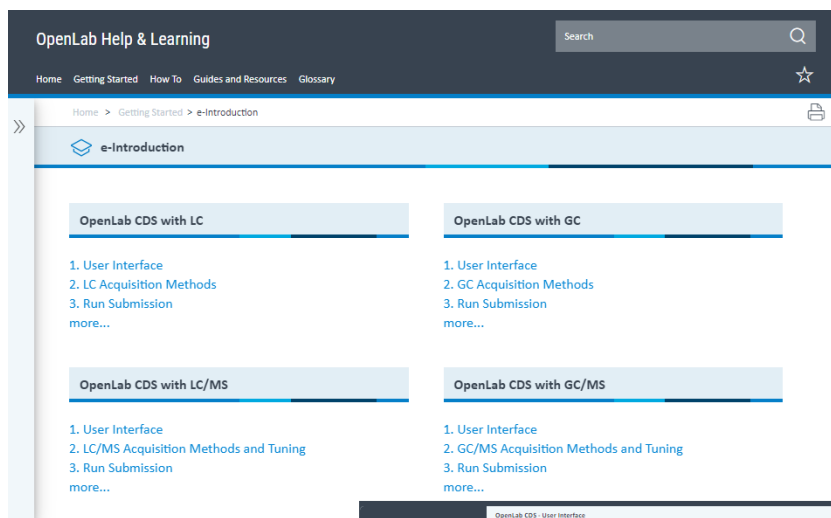
Click **?** while in the software.

To install the Help & Learning material on PCs other than those using the OpenLab CDS software, select **Installation > OpenLab Help and Learning Only** from the OpenLab CDS software installer.



On-Demand Training Tool

Included in Help & Learning, under **Getting Started > e-Introduction**, is the powerful, interactive, on-demand training tool for OpenLab CDS. This can help you easily learn the new functionality at your own pace, whenever you want. The modules walk you through detailed steps of using the OpenLab CDS software.



How To

In Help & Learning, under **How To**, you will find hundreds of topics written as detailed step-by-step instructions that walk you through routine tasks.

OpenLab Help & Learning

Home Getting Started **How To** Guides and Resources Glossary

Home > How To

How To

OpenLab CDS

- Control Panel
- Acquisition
- Data Analysis
- more...

Agilent Instruments

- Agilent LC
- Agilent GC
- Agilent LC/MS
- more...

Other Agilent Instruments

- Data Player
- SS420x
- more...

Add-on Software

- Sample Scheduler
- ADFExport
- 2D-LC Data Analysis
- more...

Guides and Resources

In Help & Learning, under **Guides and Resources**, you will find selected GC and GC/MS hardware Operating Manuals, Concept Guides, Maintenance Guides, Site Preparation Checklists, Installation Guides, and more.

The screenshot displays the 'Guides and Resources' page in the OpenLab Help & Learning system. The page is organized into a grid of six content blocks, each with a title and a list of links:

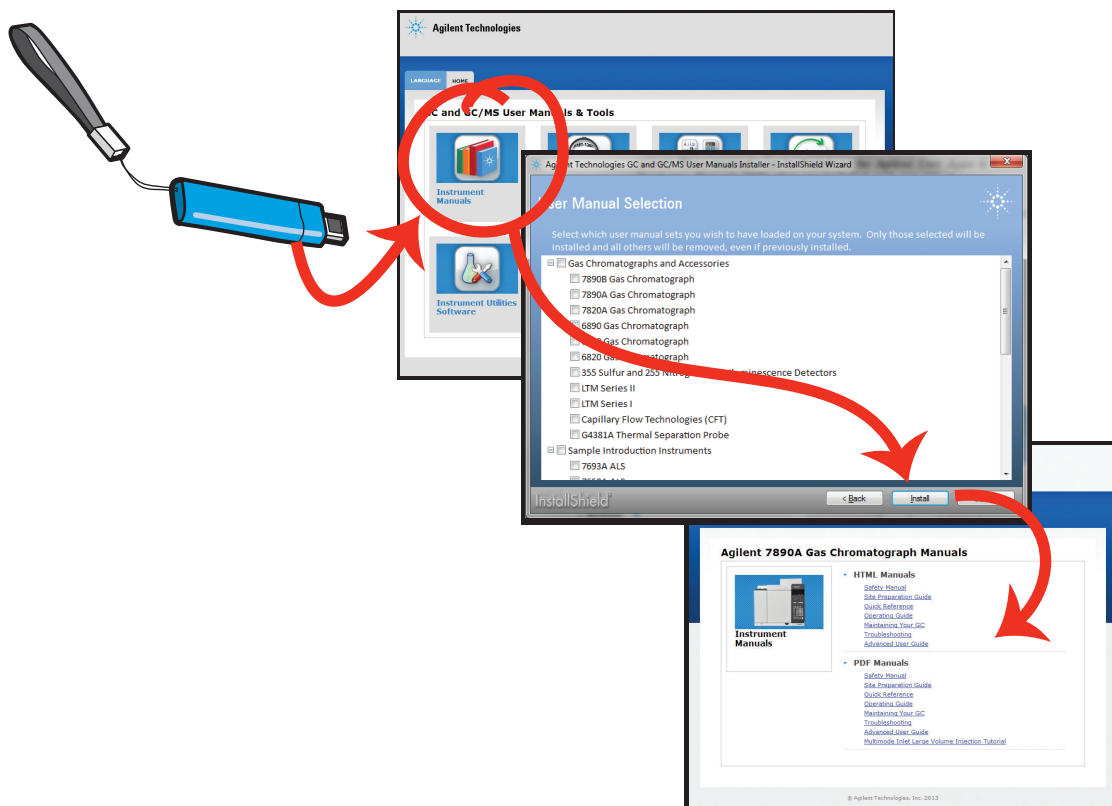
- OpenLab CDS**
 - Requirements and Supported Instruments
 - Release Notes
 - Quick Reference Sheet
 - more...
- Agilent LC**
 - Agilent LC Product Page
 - InfinityLab LC Workflow Solutions
- Agilent GC**
 - GC Systems Product Page
 - GC Autosampler and Sample Information
- Agilent LC/MS**
 - Agilent LC/MS Product Page
- Agilent GC/MS**
 - 597x MS Quick Start Guide
 - Agilent JetClean for OpenLab Operating Manual
 - Agilent 5977B Product Page
- Resources**
 - Get Support
 - Agilent OpenLab Software Suite Product Page
 - Agilent Community
 - more...

For the complete collection of **hardware information** for your GC and MSD, see **“Your GC and GC/MS Hardware Library”** on page 10.

Your GC and GC/MS Hardware Library

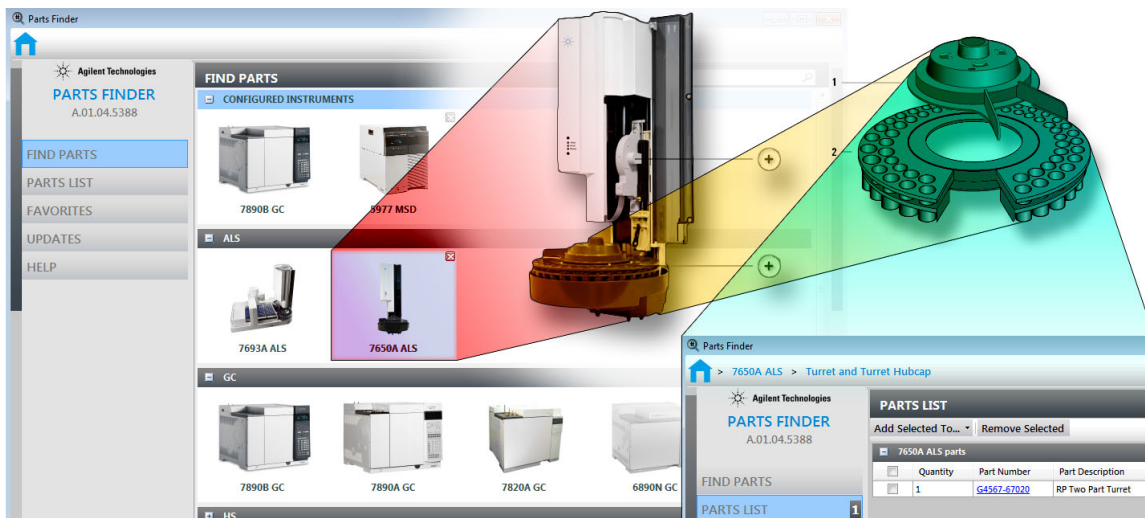
Along with your system comes a complete **GC and GC/MS Hardware Library** with manuals and videos that explain how to install, operate, maintain, and troubleshoot your system.

Insert the **User Manuals** USB into your computer and follow the system prompts to install these manuals on your computer, similar to the example shown below. Once installed, an icon will be placed on your desktop for quick access to hardware manuals.



Parts Finder Tool

Included with your system is the **Agilent Parts Finder tool**. This interactive software features an intuitive search with image-based inventory for quick identification of needed parts and supplies for your Agilent instruments. Using **Parts Finder**, rather than thumbing through a paper catalog, you can click on nested photos to quickly locate parts you need.

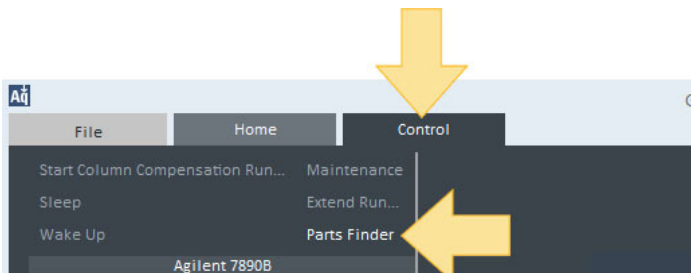


The **Parts Finder** tool is installed on your PC along with OpenLab CDS.

To open **Parts Finder**, click the Parts Finder desktop icon.



Or, in OpenLab CDS Control Panel, click **Control > Parts Finder**.



www.agilent.com

© Agilent Technologies, Inc. 2022

First Edition, November 2022



G7077-90049

