



Agilent DNF-905 dsDNA Kit (1-500 bp) Quick Guide for the Fragment Analyzer System

The Agilent Fragment Analyzer systems are automated capillary electrophoresis platforms for scalable, flexible, fast, and reliable electrophoresis of nucleic acids.

This Quick Guide is intended for use with the Agilent 5200, 5300, and 5400 Fragment Analyzer systems only. The DNF-905 reagent kit from Agilent is for the analysis of dsDNA fragments between 35 bp and 500 bp. Sizing and relative quantification between samples can be obtained using this kit. Example applications include general PCR fragment sizing and QC, microsatellite/SSR analysis, and genotyping.

Specifications

Analytical specifications	dsDNA 905 assay
DNA Sizing Range	35 bp - 500 bp
DNA Sizing Accuracy ¹	+ 5% or better
DNA Fragment Concentration Range ¹	0.5 ng/μL – 50 ng/μL input DNA (adjustable by dilution sample)
Separation Resolution	8 – 10 bp @ 300 bp (22-47 array) 5 bp @ 300 bp (33-55 array) 3 – 5 bp @ 300 bp (55-80 array)
DNA Sizing Precision ¹	2% CV

Physical Specifications

Total electrophoresis run time	22cm ² : 28 minutes, 33cm: 60 minutes, 55cm: 80 minutes
Samples per run	12, 48 or 96; depending on the instrument type
Sample volume required	2 μL (adjustable depending on sample concentration)
Kit stability	4 months

¹ Results using DNA Ladder of DNA Fragment standards initially prepared in 1x TE buffer.

² The 22 cm effective, 47 cm total length capillary is only available for 12-capillary Fragment Analyzer instruments

Kit Components – 500 Sample Kit

Kit Component Number	Part Number (Re-order Number)	Description	Quantity Per Kit
5191-6593*		dsDNA 905 (1-500bp), 500, 4°C	
	DNF-905-0240	dsDNA 905 Gel, 240 mL	1
	DNF-355-0125	5x 930 dsDNA Inlet Buffer, 125 mL <ul style="list-style-type: none"> Dilute with sub-micron filtered water prior to use 	1
	DNF-495-0060	Dilution Buffer 1X TE, 60mL	1
DNF-905-FR*		dsDNA 905 (1-500 bp), FR	
	DNF-600-U030	Intercalating Dye, 30 µL	1
	FS-SLR905-0001	35-400bp DNA Ladder, 1mL	1
	FS-MRK900F-0003	Markers, 1bp & 500bp, 3.2 mL	1
5191-6614*		Qualitative DNA, 500, RT	
	FS-SMO15	Mineral Oil Dropper Bottle, 15mL	1
	DNF-475-0050	5x Capillary Conditioning Soln, 50 mL	1

*not orderable

WARNING

- Refer to product safety data sheets for further information
- When working with the Fragment Analyzer kit components follow the appropriate safety procedures such as wearing goggles, safety gloves and protective clothing.

Kit Components – 1000 Sample Kit

Kit Component Number	Part Number (Re-order Number)	Description	Quantity Per Kit
5191-6594*		dsDNA 905 (1-500bp), 1000, 4°C	
	DNF-905-0500	dsDNA 905 Gel, 500 mL	1
	DNF-355-0300	5x 930 dsDNA Inlet Buffer, 300 mL <ul style="list-style-type: none"> Dilute with sub-micron filtered water prior to use 	1
	DNF-495-0125	Dilution Buffer 1X TE, 125mL	1
DNF-905-FR*		dsDNA 905 (1-500 bp), FR	
	DNF-600-U030	Intercalating Dye, 30 µL	2
	FS-SLR905-0001	35-400bp DNA Ladder, 1mL	2
	FS-MRK900F-0003	Markers, 1bp & 500bp, 3.2 mL	2
5191-6614*		Qualitative DNA, 1000/5000, RT	
	FS-SM015	Mineral Oil Dropper Bottle, 15mL	1
	DNF-475-0100	5x Capillary Conditioning Soln, 100 mL	1

*not orderable

WARNING

- Refer to product safety data sheets for further information
- When working with the Fragment Analyzer kit components follow the appropriate safety procedures such as wearing goggles, safety gloves and protective clothing.

Additional Material Required for Analysis with the Fragment Analyzer Systems

- Fragment Analyzer systems with LED fluorescence detection:
 - 5200 Fragment Analyzer system (p/n M5310AA)
 - FA 12-Capillary Array Ultrashort, 22 cm (p/n A2300-1250-2247) OR
 - FA 12-Capillary Array Short, 33 cm (p/n A2300-1250-3355) OR
 - FA 12-Capillary Array Long, 55 cm (p/n A2300-1250-5580)
 - 5300 Fragment Analyzer system (p/n M5311AA)
 - FA 48-Capillary Array Short, 33 cm (p/n A2300-4850-3355) OR
 - FA/ZAG 96-Capillary Array Short, 33 cm (p/n A2300-9650-3355) OR
 - FA/ZAG 96-Capillary Array Long, 55 cm (p/n A2300-9650-5580)
 - 5400 Fragment Analyzer system (p/n M5312AA)
 - FA 48-Capillary Array Short, 33 cm (p/n A2300-4850-3355) OR
 - FA/ZAG 96-Capillary Array Short, 33 cm (p/n A2300-9650-3355) OR
 - FA/ZAG 96-Capillary Array Long, 55 cm (p/n A2300-9650-5580):
 - Agilent Fragment Analyzer controller software (Version 1.1.0.11 or higher)
 - Agilent ProSize data analysis software (Version 2.0.0.61 or higher)

Additional equipment/reagents required (not supplied)

- 96-well PCR sample plates. Please refer to Appendix – Fragment Analyzer Compatible Plates and Tubes in the Fragment Analyzer System User Manual for a complete approved sample plate list
- Multichannel pipettor(s) and/or liquid handling device capable of dispensing 1 – 100 μ L volumes (sample plates) and 1,000 μ L volumes (inlet buffer plate)
- Pipette tips
- 96-well plate centrifuge (for spinning down bubbles from sample plates)
- Sub-micron filtered DI water system (for diluting the 5x 930 dsDNA Inlet Buffer and 5x Capillary Conditioning Solution)
- 96-deepwell 1mL plate: Fisher Scientific #12-566-120 (inlet buffer and/or waste plate)
- Reagent reservoir, 50 mL (VWR #89094-680 or similar) (for use in pipetting inlet buffer plates/sample trays)
- Conical centrifuge tubes for prepared separation gel/dye mixture and/or 1x Capillary Conditioning Solution
 - 50 mL (for 5200 Fragment Analyzer system or 50 mL volumes): BD Falcon #352070, available from Fisher Scientific #14-432-22 or VWR #21008-940
- 250 mL (for 5300 and 5400 Fragment Analyzer systems or larger volumes): Corning #430776, available from Fisher Scientific #05-538-53 or VWR #21008-771
- Vortexer (for mixing of samples, ladders, and/or markers in tubes and/or plates)
- Capillary Storage Solution (p/n GP-440-0100)

Essential Measurement Practices

Environmental conditions	<ul style="list-style-type: none"> Ambient operating temperature: 19 – 25 °C (66 – 77 °F) Keep reagents during sample preparation at room temperature
Steps before sample preparation	<ul style="list-style-type: none"> Allow reagents to equilibrate at room temperature for 30 min prior to use
Pipetting practice	<ul style="list-style-type: none"> Pipette reagents carefully against the side of the 96-well sample plate or sample tube Ensure that no sample or Diluent Marker remains within or on the outside of the tip
Mixing and centrifugation recommendations	<ul style="list-style-type: none"> Apply a new seal to 96-well plate prior to mixing and centrifugation Using a clean 96-well plate, pipette 22 μL of 1x TE dilution buffer (supplied with kit) to each well in a row that is to contain sample. If running the 35-400 bp DNA Ladder in parallel with the samples, pipette 24 μL of the 35-400 bp DNA Ladder solution directly (no dilution) into the specified well of the sample plate or row to be analyzed. Pipette 2 μL of each DNA sample into the 22 μL of 1x TE dilution buffer in the respective wells of the Sample Plate; mix the contents of the well using the pipette by aspiration/expulsion in the pipette tip. <ul style="list-style-type: none"> Place a plate seal on the sample plate and vortex the sample plate at 3,000 rpm for 2 min. Any suitable benchtop plate vortexer can be used. Ensure that there is no well-to-well transfer of samples when vortexing. The plate should be spun via a centrifuge after vortexing to ensure there are no trapped air bubbles in the wells. Run samples immediately after preparation, or within a day with oil overlay. If not using right away, cover and keep at 4°C, warm to RT and centrifuge before running plate

Gel preparation

Prepare gel/dye mixture for 5200, 5300, and 5400 Fragment Analyzer Systems. To ensure the gel/dye mixture is mixed homogeneously without generating bubbles, gently invert the centrifuge tube 5 to 10 times, depending on the volume of the mixture. **NOTE:** Centrifuge dye prior to opening the vial to reduce risk of leaking.

5200 Fragment Analyzer system volume specifications

# of Samples to be Analyzed ¹	Volume of Intercalating Dye	Volume of Separation Gel ²	Volume of 1x Conditioning Solution ²
12	1.0 µL	10 mL	10 mL
24	1.5 µL	15 mL	15 mL
36	2.0 µL	20 mL	20 mL
48	2.5 µL	25 mL	25 mL
96	4.5 µL	45 mL	45 mL

¹One sample well per separation is dedicated to the ladder.

²A 5 mL minimum volume in the tube is included.

5300 Fragment Analyzer system volume specifications with 48-capillary array

# of Samples to be Analyzed ¹	Volume of Intercalating Dye	Volume of Separation Gel ²	Volume of 1x Conditioning Solution ²
48	2.5 µL	25 mL	25 mL
96	4.0 µL	40 mL	40 mL
144	5.5 µL	55 mL	55 mL
192	7.0 µL	70 mL	70 mL
240	8.5 µL	85 mL	85 mL
288	10.0 µL	100 mL	100 mL

¹One sample well per separation is dedicated to the ladder.

²A 5 mL minimum volume in the tube is included.

5300 and 5400 Fragment Analyzer systems volume specifications with 96-capillary arrays

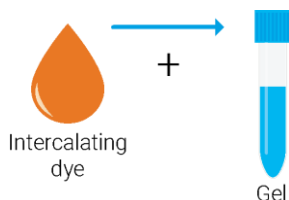
# of Samples to be Analyzed ¹	Volume of Intercalating Dye	Volume of Separation Gel ²	Volume of 1x Conditioning Solution ²
96	4.0 µL	40 mL	40 mL
192	8.0 µL	80 mL	80 mL
288	12.0 µL	120 mL	120 mL
384	16.0 µL	160 mL	160 mL
480	20.0 µL	200 mL	200 mL

¹ One sample well per separation is dedicated to the ladder.

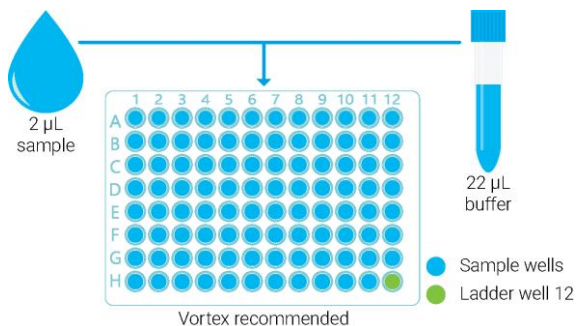
² A 5 mL minimum volume in the tube is included.

Agilent dsDNA 905 (1-500bp) DNF-905 assay operating procedure

- Mix fresh gel and dye according to the volumes in the Gel preparation tables. Refill 1x Capillary Conditioning Solution as needed.



- Place a fresh 1x 930 dsDNA Inlet Buffer in drawer 'B' on the system, 1.0 mL/well. Replace daily.
 - 5200 system; Fill row A of buffer plate
 - 5300 system - 48 capillary; Fill rows A-D of buffer plate
 - 5300/5400 system - 96 capillary; Fill all rows of buffer plate
- Prepare Capillary Storage Solution plate. Replace every 2-4 weeks for optimal results.
 - 5200 system; Fill row H of buffer plate with 1.0mL/well, place in drawer "B"
 - 5300 system - 48 capillary; Fill rows A-D of a sample plate with 100 μ L/well, place in drawer '3'
 - 5300/5400 system - 96 capillary; Fill all rows of a sample plate with 100 μ L/well, place in drawer '3'
 - 5400 system; place in drawer "S"
- Prepare Marker plate and place in drawer 'M' on the system, 30 μ L/well. Add 1 drop or \sim 30 μ L of mineral oil to each well. The marker plate should last for 30+ injections or \sim 1 month.
 - 5200 system; Fill row A of sample plate
 - 5300 system - 48 capillary; Fill rows A-D of sample plate
 - 5300/5400 system - 96 capillary; Fill all rows of sample plate
- Mix samples with Diluent Buffer 1x TE in sample plate. Add ready to use ladder in corresponding well, dependent on the capillary size.



5200 system; Ladder – well 12, depending on which row is chosen

5300 system - 48 capillary; Ladder – well D12 or H12, depending on which group is chosen

5300/5400 system - 96 capillary; Ladder – well H12


WARNING

Working with Chemicals
The handling of reagents and chemicals might hold health risks.

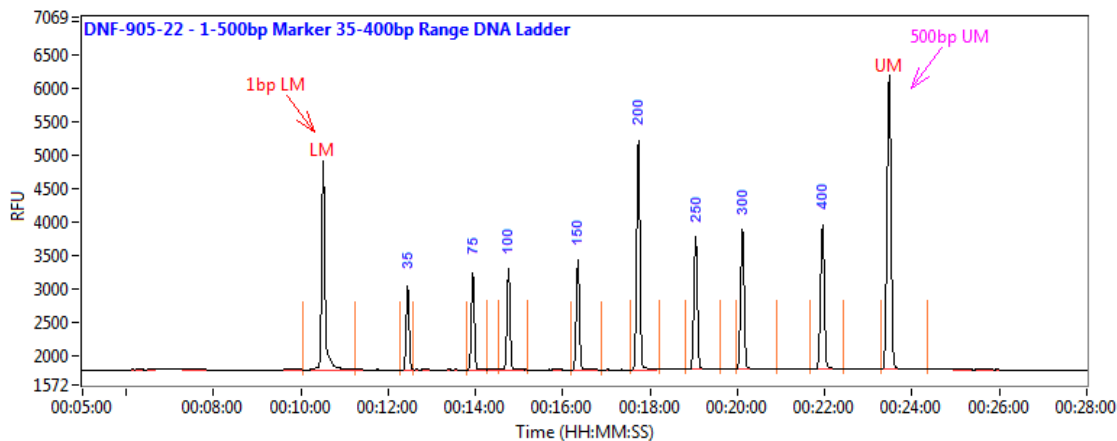
- Refer to product material safety datasheets for further chemical and biological safety information.

- Follow the appropriate safety procedures such as wearing goggles, safety gloves and protective clothing.

Agilent Fragment Analyzer software operating procedure

1. Select Row, Group or Tray to run.
2. Enter **sample ID** and **Tray ID**(optional).
3. Select **Add to Queue**, from the dropdown menus select the corresponding method based on your capillary length;
 - 3.1 DNF-905-22 – DNA 1-500 bp
 - 3.2 DNF-905-33 – DNA 1-500 bp
 - 3.3 DNF-905-55 – DNA 1-500 bp
4. Enter **Tray Name**, **Folder Prefix**, and **Notes** (optional).
5. Select **OK** to add method to the queue.
6. Select  to start the separation.

35 – 400 bp DNA Ladder result



Representative 35-400 bp DNA Ladder result double injected with 1 bp lower marker and 500 bp upper marker, using the Fragment Analyzer system with the dsDNA 905 Reagent Kit (1 -500 bp). Method: DNF-905-22("ultra-short" array).

Troubleshooting

The following table lists several potential assay specific issues which may be encountered when using the dsDNA 905 Reagent Kit (1-500 bp) and suggested remedies. Contact Agilent technical support if you have any additional troubleshooting or maintenance questions.

Issue	Cause	Corrective Action
The peak signal is >> 20,000 RFU; upper marker peak is low or not detected relative to lower marker..	1 Input DNA sample concentration is too high.	1 Further dilute input DNA sample concentration with 1x TE buffer and repeat experiment. 2 Reduce injection time and/or injection voltage and repeat experiment. Use the same injection voltage/time settings for the Marker Plate and Sample Plate to maximize quantification accuracy.
Sample peak(s) migrate before or co-migrate with 1 bp Lower Marker.	1 Excess primer-dimer species in sample.	1 Further dilute input DNA sample concentration with 1x TE buffer to minimize primer-dimer interference and repeat experiment.
Sample peak(s) migrate after or co-migrate with 500 bp Upper Marker.	1 DNA sample size out of range of assay.	1 Analyze samples with dsDNA 910 Reagent Kit, 35 bp – 1,500 bp (DNF-910), dsDNA 915 Reagent Kit, 35 bp – 5,000 bp (DNF-915), dsDNA 920 Reagent Kit, 75 bp – 15,000 bp (DNF-920), or dsDNA 930 Reagent Kit, 75 bp – 20,000 bp (DNF-930).
No peak observed for DNA sample when expected. Lower/Upper Marker peaks observed.	1 Sample concentration too low and out of range. 2 Sample was not added to 1x TE diluent or not mixed well.	1 Prepare more concentrated sample and repeat experiment (e.g. 4 µL sample + 20 µL DI water); OR Repeat experiment using increased injection time and/or injection voltage for Marker Plate and Sample Plate. 2 Verify sample was correctly added and mixed to sample well.
No sample peak or marker peak observed for individual sample.	1 Air trapped at the bottom of sample plate well, or bubbles present in sample well. 2 Insufficient sample volume. A minimum of 20 µL is required. 3 Capillary is plugged.	1 Check sample plate wells for trapped air bubbles. Centrifuge plate. 2 Verify proper volume of solution was added to sample well. 3 Check waste plate for liquid in the capillary well. If no liquid is observed follow the steps outlined in the Appendix – Capillary Array Cleaning of the Fragment Analyzer User Manual for unclogging a capillary array.

For Research Use Only

Not for use in Diagnostic Procedures.

Technical Support and Further Information

For technical support, please visit www.agilent.com. It offers useful information and support about the products and technology.

www.agilent.com

© Agilent Technologies, Inc. 2021

Edition 02/22

SD-AT000120

