

OpenLab ECM XT Import Scheduler

## **Installation Guide**

# Notices

## Document Identification

DocNo D0035356 Rev. A.00  
EDITION 01/2024

## Copyright

© Agilent Technologies, Inc. 2024

No part of this manual may be reproduced in any form or by any means (including electronic storage and retrieval or translation into a foreign language) without prior agreement and written consent from Agilent Technologies, Inc. as governed by United States and international copyright laws.

Agilent Technologies, Inc.  
5301 Stevens Creek Blvd.  
Santa Clara, CA 95051

## Software Revision

This guide is valid for the 2.8 revision or higher of the OpenLab ECM XT Import Scheduler program and compatible OpenLab ECM XT Import Scheduler programs, until superseded.

## Warranty

The material contained in this document is provided "as is," and is subject to being changed, without notice, in future editions. Further, to the maximum extent permitted by applicable law, Agilent disclaims all warranties, either express or implied, with regard to this manual and any information contained herein, including but not limited to the implied warranties of merchantability and fitness for a particular purpose. Agilent shall not be liable for errors or for incidental or consequential damages in connection with the furnishing, use, or performance of this document or of any information contained herein. Should Agilent and the user have a separate written agreement with warranty terms covering the material in this document that conflict with these terms, the warranty terms in the separate agreement shall control.

## Technology Licenses

The hardware and/or software described in this document are furnished under a license and may be used or copied only in accordance with the terms of such license.

## Restricted Rights Legend

U.S. Government Restricted Rights. Software and technical data rights granted to the federal government include only those rights customarily provided to end user customers. Agilent provides this customary commercial license in Software and technical data pursuant to FAR 12.211 (Technical Data) and 12.212 (Computer Software) and, for the Department of Defense, DFARS 252.227-7015 (Technical Data - Commercial Items) and DFARS 227.7202-3 (Rights in Commercial Computer Software or Computer Software Documentation).

## Safety Notices

### CAUTION

A **CAUTION** notice denotes a hazard. It calls attention to an operating procedure, practice, or the like that, if not correctly performed or adhered to, could result in damage to the product or loss of important data. Do not proceed beyond a **CAUTION** notice until the indicated conditions are fully understood and met.

### WARNING

A **WARNING** notice denotes a hazard. It calls attention to an operating procedure, practice, or the like that, if not correctly performed or adhered to, could result in personal injury or death. Do not proceed beyond a **WARNING** notice until the indicated conditions are fully understood and met.

## Agilent Community



### Agilent Community

To get answers to your questions, join over 10,000 users in the Agilent Community. Review curated support materials organized by platform technology. Ask questions to industry colleagues and collaborators. Get notifications on new videos, documents, tools, and webinars relevant to your work.

<https://community.agilent.com/>

# Table of Contents

<b>1</b>	<b>The Agilent OpenLab ECM XT Import Scheduler Software</b>	<b>5</b>
	<b>Before You Begin</b>	<b>6</b>
	<b>Hardware and Software Requirements</b>	<b>7</b>
	<b>Empower Add-on Requirements</b>	<b>8</b>
	Client/Server	8
	Workstation	8
	<b>Install Import Scheduler</b>	<b>9</b>
	Upgrade Import Scheduler tasks	10
	<b>Uninstall Import Scheduler</b>	<b>11</b>
<b>2</b>	<b>Appendix</b>	<b>12</b>
	<b>Sales and Support Assistance</b>	<b>12</b>

# The Agilent OpenLab ECM XT Import Scheduler Software

The Agilent OpenLab ECM XT software offers the Import Scheduler add-on program to automate the transfer, backup, and archival of analytical data within your laboratory to OpenLab Secure Storage.

Use the Import Scheduler software to schedule the transfer of files generated by your instruments, regardless of the instrument vendor, to OpenLab Secure Storage.

## Before You Begin

- 1 Install and configure your Agilent OpenLab ECM XT Server (see the *Agilent OpenLab ECM XT Installation Guide*).
- 2 Install and configure the OpenLab Client Services (see the *Agilent OpenLab ECM XT Installation Guide*).
- 3 Verify the minimum requirements for the computers where the software will be installed. For hardware and software requirements, see the OpenLab Server and OpenLab ECM XT Hardware and Software Requirements Guide.
- 4 Obtain your ECM XT server name and administrator credentials.

## Hardware and Software Requirements

For hardware and software requirements, refer to the OpenLab Server and OpenLab ECM XT Hardware and Software Requirements Guide. You can open this from the Planning page of the OpenLab installer. It is also located on the installation media at \Setup\Docs\EN. Localized versions are available for download from [SubscribeNet](#).

## Empower Add-on Requirements

The Import Scheduler Empower add-on is supported with Empower 3 FR5 Client/Server and Workstation.

### Client/Server

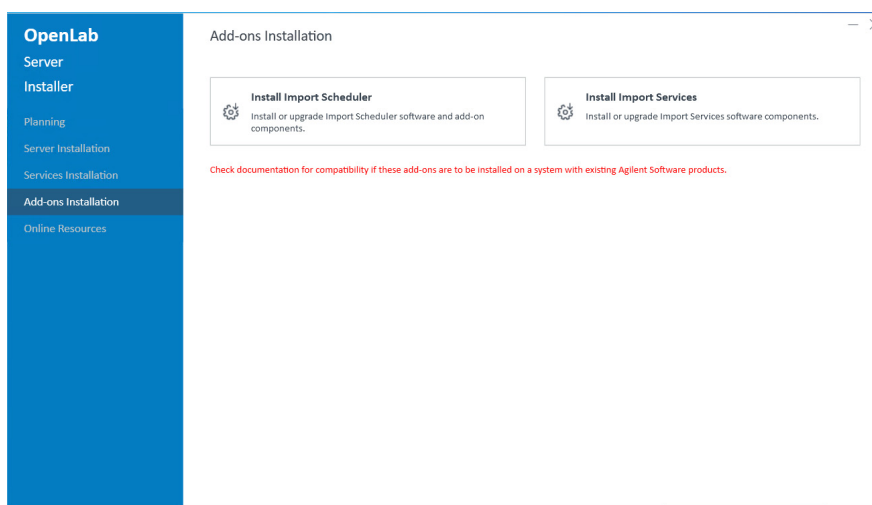
If the Empower add-on is being used, an Empower Client with Empower 3 FR5 must be installed on Windows 10 before installing the Import Scheduler or Empower add-on. Use the Empower installation guide to install Empower 3 FR5. After installing Empower 3 FR5, continue to **“Install Import Scheduler”** on page 9.

### Workstation

Install the Import Scheduler and Empower add-on directly on the Empower 3 FR5 workstation using the procedure in **“Install Import Scheduler”** on page 9.

## Install Import Scheduler

- 1 From your OpenLab ECM XT installation media, click **setup.exe**.
- 2 From the drop-down menu, select **OpenLab Server/ECM XT**.
- 3 In the **OpenLab Installer**, select **Add-ons Installation**.
- 4 On the **Add-ons Installation** screen, click **Install Import Scheduler**.



- 5 Review and agree to the license terms, and click **Next**.
- 6 On the Installation Folder screen, use the default location, or select the **Installation Folder** to hold the Import Scheduler software components, and click **Next**.  
Agilent recommends installing Import Scheduler only on machines running the OpenLab Client Services. It should not be installed on the ECM XT server.
- 7 On the Port screen, enter a **Port Number** that can be dedicated to accessing the Import Scheduler web application, and click **Next**.
- 8 On the Add-on Component screen, to upload data from your Waters Empower™ 3 system directly to ECM XT, select **Install Import Scheduler Empower add-on**, and click **Next**. After installation of this feature, you will need to install an extra license in the Control Panel to enable the add-on.
- 9 Review the **Installation Preview**, and click **Install**.
- 10 When the installation is complete, click **Next**.
- 11 Agilent recommends that you reboot your system after the installation is completed. It is recommended to **Reboot the computer now**.
- 12 Click **Run Software Verification**, and ensure the Software Verification Report passes before continuing with the installation.
- 13 On the Finish screen, click **Finish** to exit the installer. See the *Agilent OpenLab ECM XT Import Scheduler Administration Guide* for information on using and maintaining your software.
- 14 Install your Agilent OpenLab ECM XT Import Scheduler **OpenLab ECM Core** license. (See the *OpenLab Control Panel Online Help* for more information.) If you installed the Import Scheduler Empower add-on, you must install an extra license to enable the add-on.

- 15** To access the Import Scheduler after installation is complete,
- a** Open a supported Internet browser.
  - b** Go to: `http://<<import scheduler host name>>:port`, where `<<import scheduler host name>>` is the server name where Import Scheduler is installed, and `port` is the port number specified in [step 7](#).

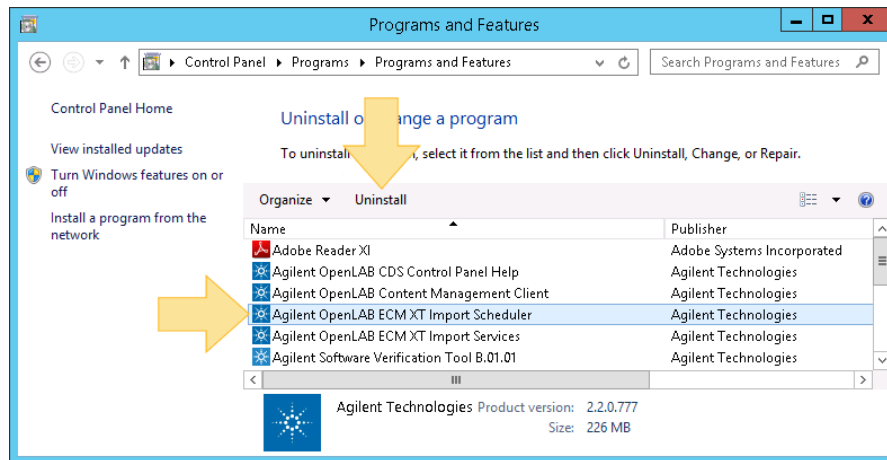
## Upgrade Import Scheduler tasks

After upgrading Import Scheduler with the Empower Add-on, you must resubmit all Empower tasks created before an upgrade. To resubmit a task, open a task to edit it and then save the task. You do not need to resubmit General tasks.

## Uninstall Import Scheduler

When uninstalling Import Scheduler, the database, log files, and backups are kept in **C:\ProgramData\Agilent\OpenLab ECM XT Import Scheduler**. If Import Scheduler is re-installed on the same computer, the installer will detect and use the existing database. If you want to create a database during reinstallation, you must manually remove or rename the **OpenLab ECM XT Import Scheduler** folder.

- 1 From your Windows Control Panel, select **Programs and Features**.
- 2 Select **Agilent OpenLab ECM XT Import Scheduler**, and click **Uninstall**.



### Sales and Support Assistance

Please check the following web site for your local sales and support contact:

<https://www.agilent.com/en/support>

[www.agilent.com](http://www.agilent.com)

© Agilent Technologies, Inc. 2024

DocNo D0035356

EDITION 01/2024

