

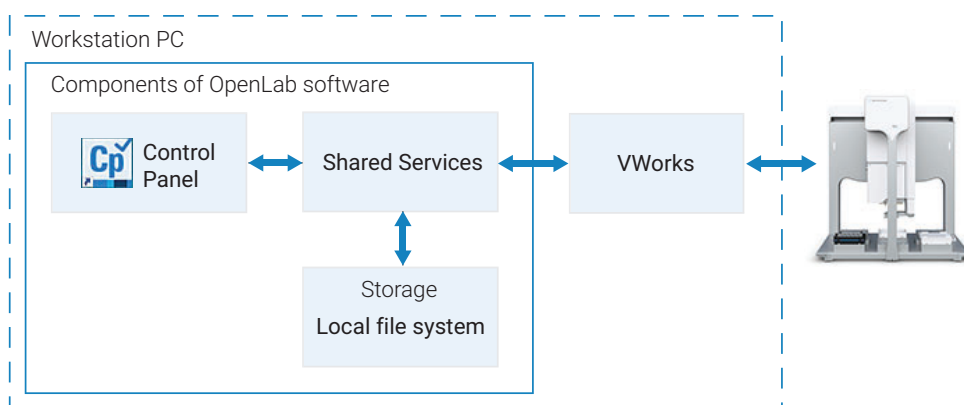
## VWorks Standard 14.2

# Quick Reference

### VWorks Standard components

VWorks Standard consists of components of Agilent OpenLab software and the VWorks software. All the required software components are installed on a single computer that connects to an Agilent automation device or workstation.

**Figure** VWorks Standard architecture and primary components



### VWorks component

The VWorks component provides the instrument control for the automation devices. The software provides the tools to create labware definitions and liquid classes, set up your devices, create device profiles, and create and run protocols.

### OpenLab for VWorks components

The following components provide the tools to manage licenses, storage, user access, and project settings.

- **Control Panel and Shared Services.** An administrator uses the OpenLab Control Panel to configure Shared Services to control user access to the software, manage software licenses, and manage storage.
- **Storage repository.** Shared Services uses the local file system to store files in a predefined VWorks Projects folder. The file path is defined when the software is installed, for example,

C:\OLSSProjects\VWorks Projects\VWorks\

*Note:* Unlike previous versions, VWorks Standard does not use the Windows Registry for storing records, such as labware definitions and device profiles.

**Workflow** The following table has two sections:

- Tasks to initially configure the system after installation
- Ongoing tasks

You can find detailed descriptions in the VWorks Knowledge Base. See [“Opening VWorks Knowledge Base” on page 7](#).

Step	Task	VWorks Role	See ...
<b>Initial configuration and set up</b>			
1	Log in to OpenLab Control Panel and configure the software, including user management.	System Administrator (Everything role)	<a href="#">“Starting Control Panel” on page 3</a>
2	Log in to the VWorks software.	VWorks Administrator, Technician, Operator, or Guest	<a href="#">“Starting VWorks” on page 4</a>
3	Set up the VWorks software.	VWorks Administrator or Technician	<a href="#">“Setting up VWorks” on page 5</a>
4	Set up your automation devices.	VWorks Administrator or Technician	Device user guide, for example, <a href="#">Bravo Platform User Guide</a>
<b>Ongoing use</b>			
5	Create protocols and forms to run your automation devices.	VWorks Administrator or Technician	<a href="#">VWorks Automation Control User Guide</a> and <a href="#">VWorks Software Quick Guide for Protocol Authors</a>
6	Run protocols.	VWorks Administrator, Technician or Operator	<a href="#">“Running a protocol” on page 6</a>
7	Perform periodic software and data backups.	VWorks Administrator or Technician	<a href="#">VWorks Standard Configuration and Administration Guide</a>

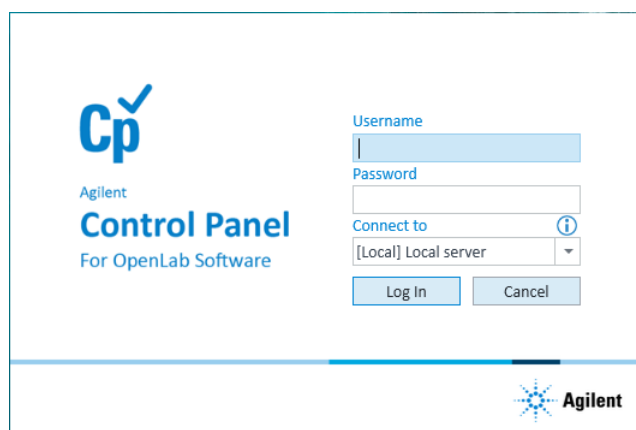
*Note:* For details about the predefined VWorks user groups and roles, see the [VWorks Standard Configuration and Administration Guide](#).

## Starting Control Panel

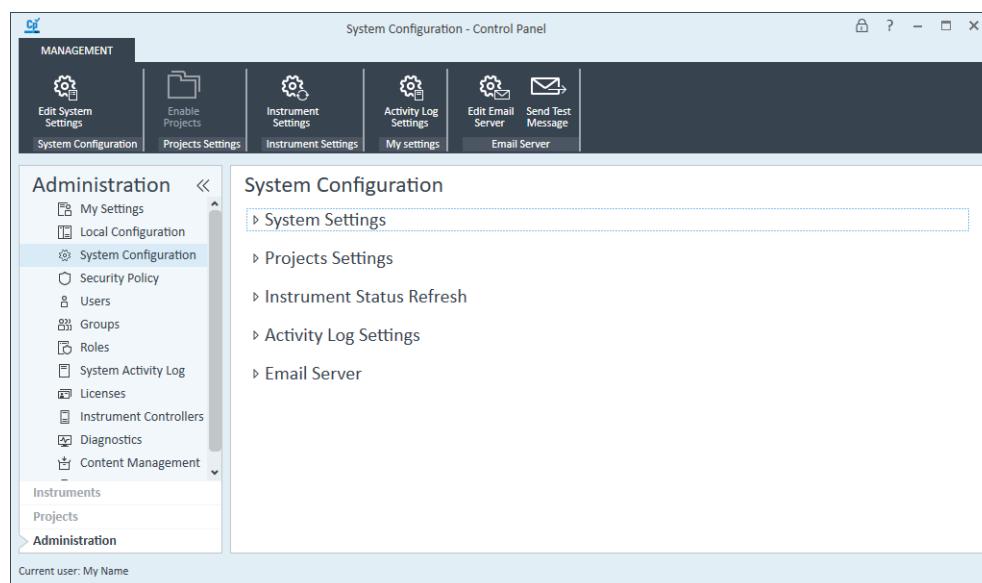


### To start Control Panel:

- 1 Click the Control Panel icon on the Windows desktop.
- 2 In the Control Panel login window that opens, enter your login credentials.



The Control Panel window opens.



For detailed instructions on how to configure the settings, see the [VWorks Standard Configuration and Administration Guide](#).

Note: Some Control Panel features are not applicable for VWorks users, such as the Diagnostics and Instrument Controllers reports.

## Starting VWorks

To log in to the VWorks software, you must have a role of VWorks Administrator, VWorks Technician, VWorks Operator, or VWorks Guest.

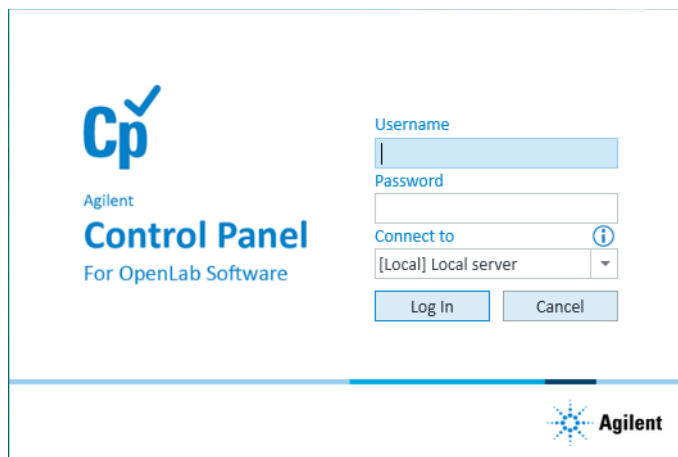
*Note:* During installation, a VWorks shortcut is placed on the Windows desktop. The shortcut is configured for the default instrument (computer) and project (VWorks).

### To start VWorks from a desktop shortcut:

- 1 On the Windows desktop, double-click the VWorks shortcut



The Control Panel Login window opens.

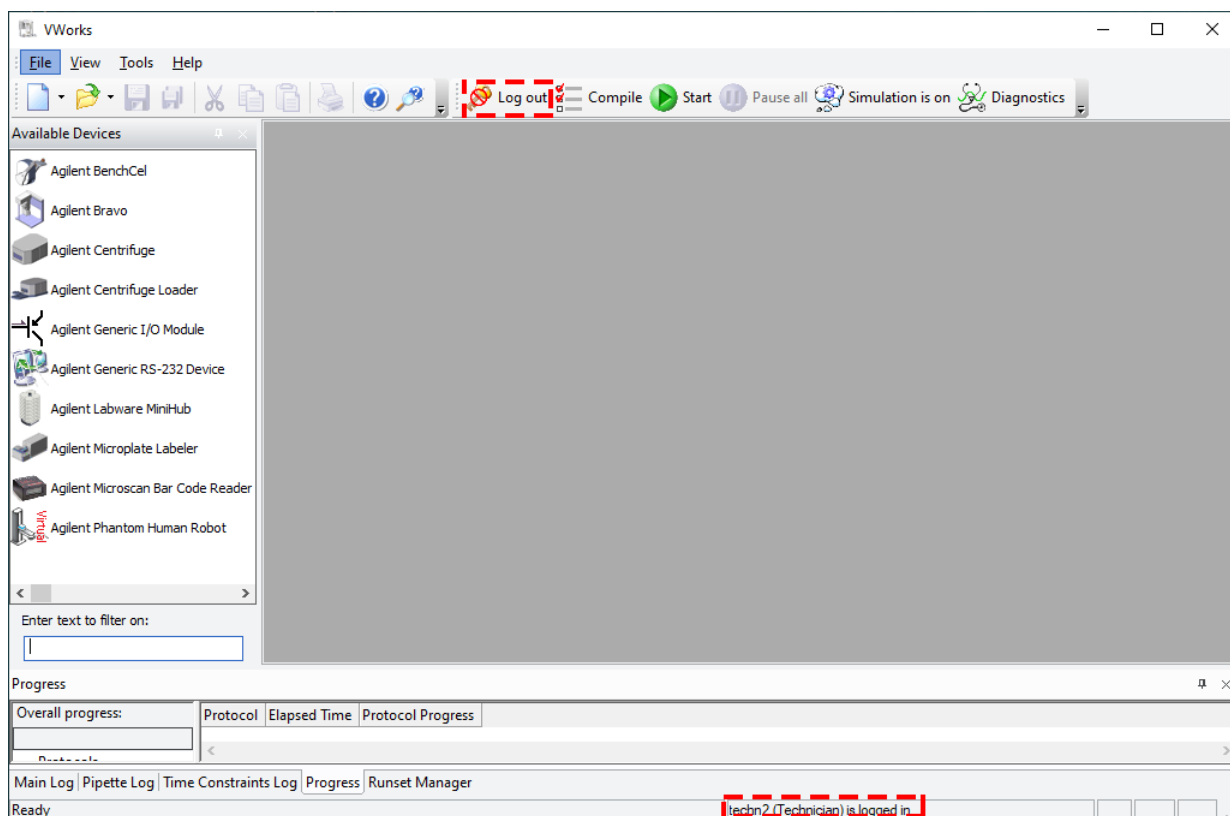


- 2 In the **Control Panel** login window:

- Type your **Username** and **Password**.
- If applicable, select the server from the **Connect to** list.

Click **Log In**. The VWorks window opens. The following figure shows an example. The window display can vary depending on any previous settings for view options.

In the VWorks window, the Log in button changes to Log out, and the status bar indicates that the login is successful.



## Setting up VWorks

The following table provides a summary of the setup tasks that can be performed by a user with VWorks Administrator or VWorks Technician privileges.

Step	VWorks Administrator or Technician task	Where to find instructions
1	<i>Administrator only.</i> If upgrading from VWorks 12.3, 13.0, 13.1.x, migrate files and registry information into Shared Services storage for use in VWorks Standard.	<a href="#">VWorks Automation Control Setup Guide</a>
2	Use the Labware Editor to create labware definitions for the labware you will use during protocol runs. In the VWorks window, click <b>Tools &gt; Labware Editor</b> .	<a href="#">VWorks Automation Control Setup Guide</a>
3	<i>Bravo Platform only.</i> Use the Liquid Library Editor to specify the pipetting speed and accuracy. In the VWorks window, click <b>Tools &gt; Liquid Library Editor</b> .	<a href="#">VWorks Automation Control Setup Guide</a>
4	Set up your automation devices.	User guide for the device
5	<i>Labware storage device only.</i> If you have a Labware MiniHub, set up the Inventory database to manage the labware inventory.	<a href="#">VWorks Automation Control Setup Guide</a>
6	<i>Optional.</i> If you plan to use the Experiments Editor, establish a connection to the Experiments database.	<a href="#">VWorks Automation Control Setup Guide</a>

## Running a protocol

For instructions on creating forms and protocols, see the [VWorks Automation Control User Guide](#).

### If you are using a VWorks form:

Use the controls in the form to set up and run the protocol.

### If you are running a protocol from the VWorks window:

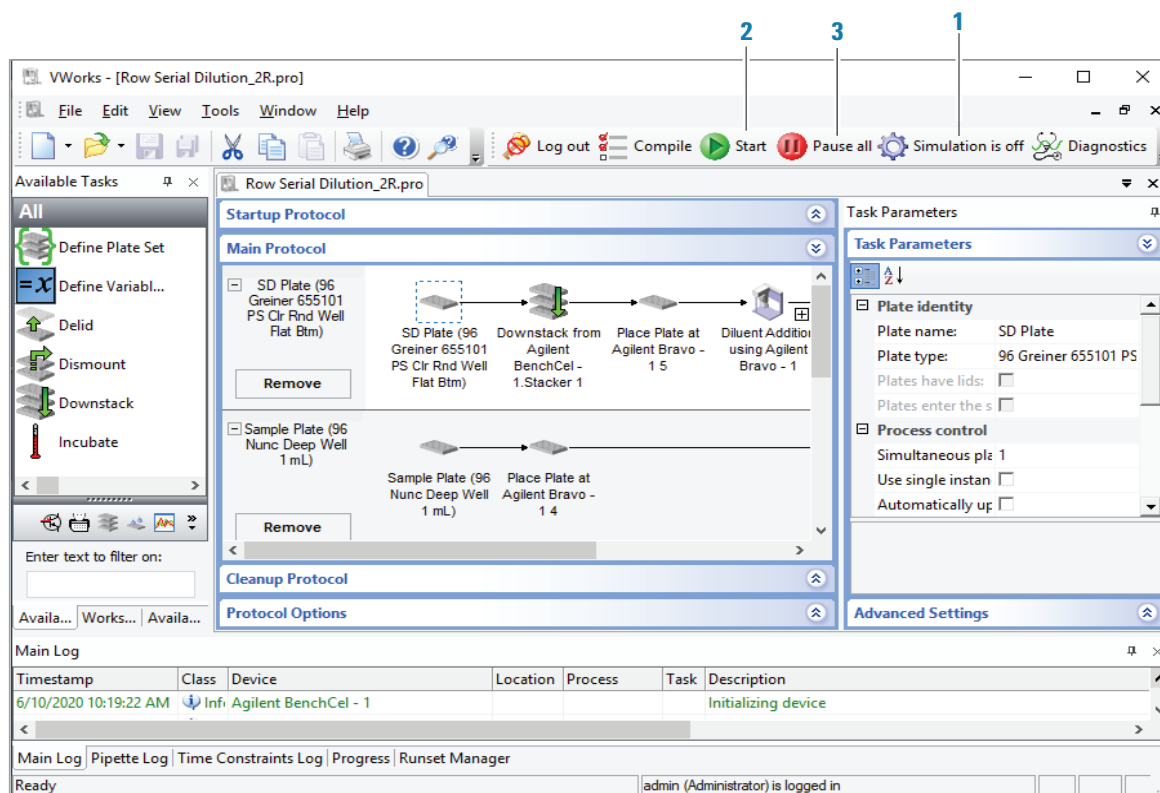
- 1 Click **Simulation is on** to turn off the simulation mode. The button changes to Simulation is off (figure, item 1).
- 2 Click **Start** (2).

### To pause or stop the protocol run:

Click **Pause all** (3). In the Scheduler Paused dialog box, select the command to resume, finish processing existing labware already in the system, or abort the run. You can also make device adjustments in the diagnostics software before resuming the run.

### To stop the protocol run in an emergency:

Press the hardware emergency-stop button. Note that you may not be able to resume a run after an emergency stop.

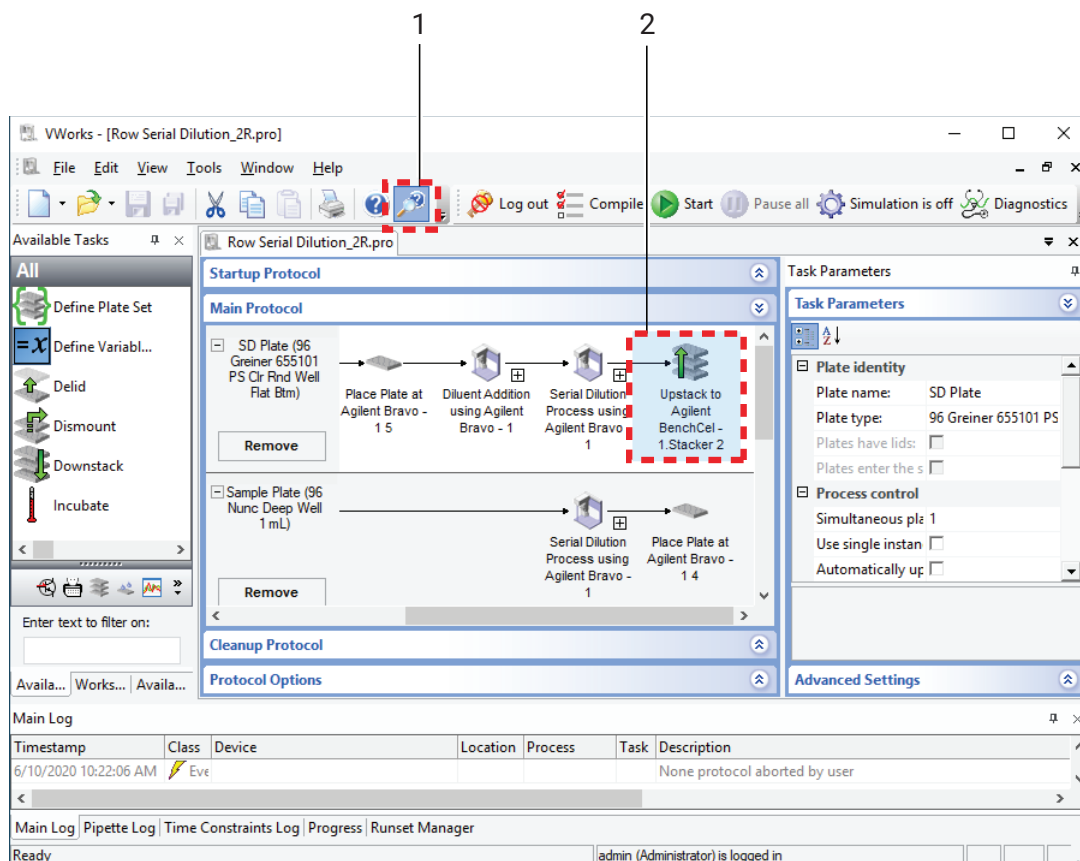


## Opening VWorks context-sensitive help



**To open context-sensitive help in the VWorks window:**

- 1 In the VWorks window, click the button on the toolbar. The pointer changes to .
- 2 Click an icon or area of interest in the VWorks window. The relevant help topic or guide opens.



## Opening VWorks Knowledge Base

**To open the knowledge base:**

- From within VWorks software, click **Help > Knowledge Base** or press F1.
- From the Windows desktop, select **Start** > **All apps > Agilent Technologies > VWorks Knowledge Base**.

For the online knowledge base, go to [www.agilent.com/chem/askb](http://www.agilent.com/chem/askb)

## Contacting Agilent

Web: <https://www.agilent.com>

Contact page: <https://www.agilent.com/en/contact-us/page>

Documentation feedback: [documentation.automation@agilent.com](mailto:documentation.automation@agilent.com)