



Replacement StarCell element (mod. 919-9030) and Triode element (mod. 919-9035) are suitable for Agilent Vaclon Plus pumps model 919-0104, 919-0204, 919-0105, 919-0205, 919-0106 and 919-0206.

1-1 Exchange of pumping element

- 1) Disconnect the power supply from the system.
- 2) Remove the pump from the system.
- 3) Remove the internal high-voltage connections (see Fig. 1-1).
- 4) Remove the element holding brackets (see Fig. 1-1).
- 5) Pull the element out of the pocket and remove it through the inlet flange.
- 6) Clean the internal part of the pump with the appropriate solvent.

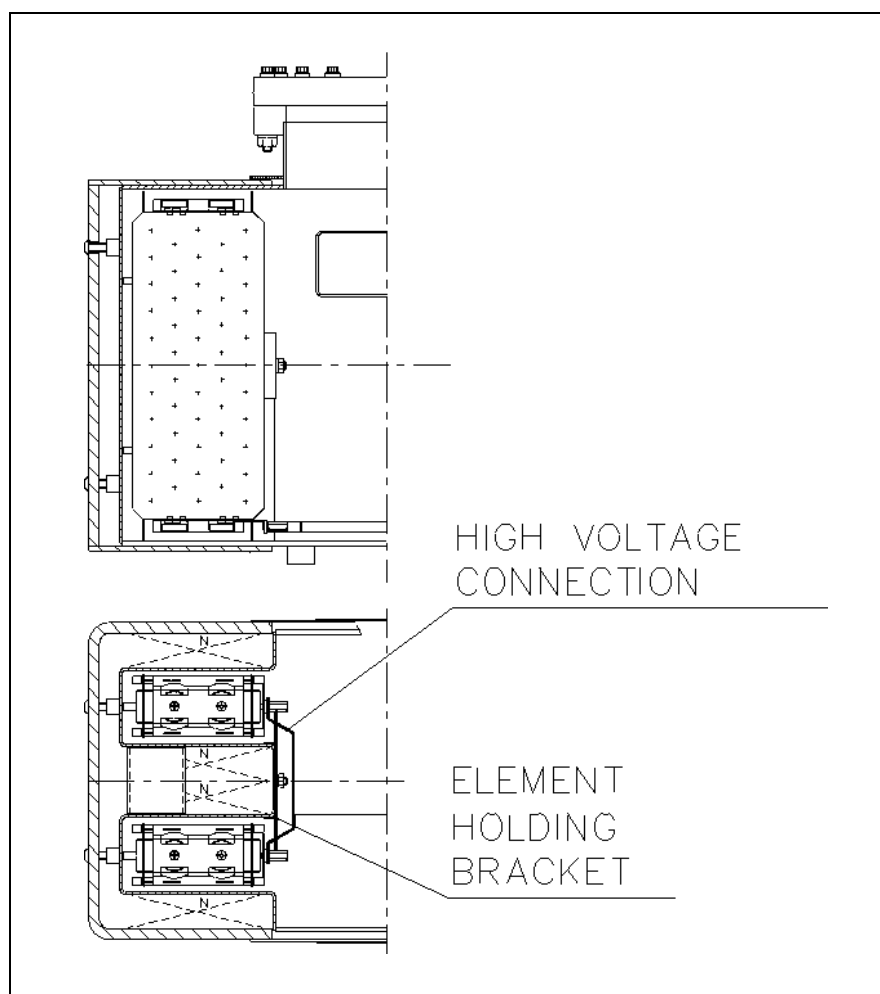


Figure 1-1 Pump element position and fixing items

- 7) Observe the pumping element brackets and compare them with the replacement ones (see Fig. 1-2).
- 8) If the bracket dimensions are the same go to the following step. Otherwise you must break the brackets where they are lanced by means of a pliers (see Fig. 1-3).
- 9) Put in the new element through the inlet flange. Make sure that the element is fixed at its rear by the two press-formed buttons of the element pocket, and at its front by the element holding clamp.
- 10) Reattach the high-voltage connections and test for continuity from the feedthrough.
- 11) Place a blank flange over the pump inlet and leak-check it with a leak detector.
- 12) Reassemble the pump into the system.
- 13) Reconnect the power supply to the system.
- 14) Bake out the blanked off pump while it is operating, and leave it to cool down; then verify that the base pressure is below 10^{-9} Torr (mbar).

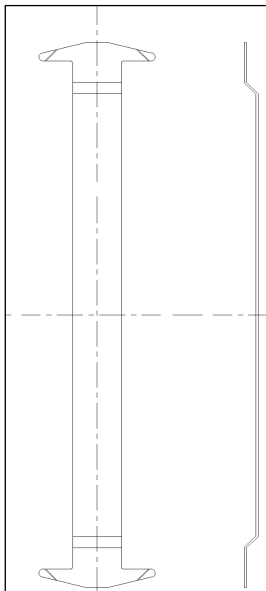


Figure 1-2 Replacement element brackets

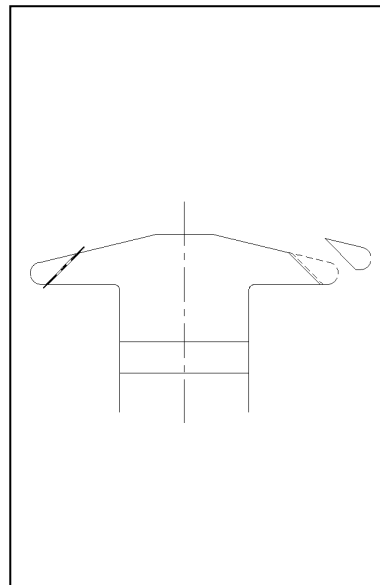


Figure 1-3 Replacement element bracket cutting

DISPOSAL

Meaning of the "WEEE" logo found in labels

The following symbol is applied in accordance with the EC WEEE (Waste Electrical and Electronic Equipment) Directive. This symbol (**valid only in countries of the European Community**) indicates that the product it applies to must NOT be disposed of together with ordinary domestic or industrial waste but must be sent to a differentiated waste collection system. The end user is therefore invited to contact the supplier of the device, whether the Parent Company or a retailer, to initiate the collection and disposal process after checking the contractual terms and conditions of sale.

