

# Multidraw Infinity II Upgrade Kit (G7167-68711)

## Installation Note

In this note we describe how to install the Multidraw Infinity II Upgrade Kit (G7167-68711) into an Agilent 1200 Series autosampler.

## Contents

**General Information** 2

**Delivery Checklist** 3

**Installing the Multidraw Infinity II Upgrade Kit** 4

**Configuration of the Controller** 6

OpenLab Configuration C.01.06 and above 6

LabAdvisor Configuration for the Multisampler B.02.05 and above 7

Legacy CDS systems for instant ChemStation Configuration 8

Control Module Configuration 8

Instant Pilot 8



**Agilent Technologies**

## General Information

The multidraw upgrade kit can be installed in any Agilent 1200 Series autosampler.

With the kit you can add a maximum of 500  $\mu\text{L}$  or 1500  $\mu\text{L}$  to the injection volume (100  $\mu\text{L}$  analytical head) of your injector.

The total injection volume is then 500  $\mu\text{L}$  or 1500  $\mu\text{L}$  for the standard autosampler with 100  $\mu\text{L}$  analytical head.

If the optional 900  $\mu\text{L}$  analytical head is installed in the autosampler you can add only the 1500  $\mu\text{L}$  injection volume capillary. This allows to expand the injection volume of your autosampler to a maximum of 1800  $\mu\text{L}$  (multi-injection mode only allows storage of integer multiples of the syringe volume in the seat capillary).

### NOTE

The delay volume of your autosampler is extended when using the extended seat capillaries from the multidraw kit. When calculating the delay volume of the autosampler you have to double the volume of the extended capillaries (used in partial filling mode). The delay volume can be reduced by bypassing the autosampler once the sample has reached the head of the column, see your *User Manual* for more information.

When using the autosampler in multidraw mode the syringe ejects an equivalent of the injected volume into waste. Therefore it is recommended to install a separate waste tube (shipped with the start-up kit of your autosampler) to the waste outlet of the autosampler.

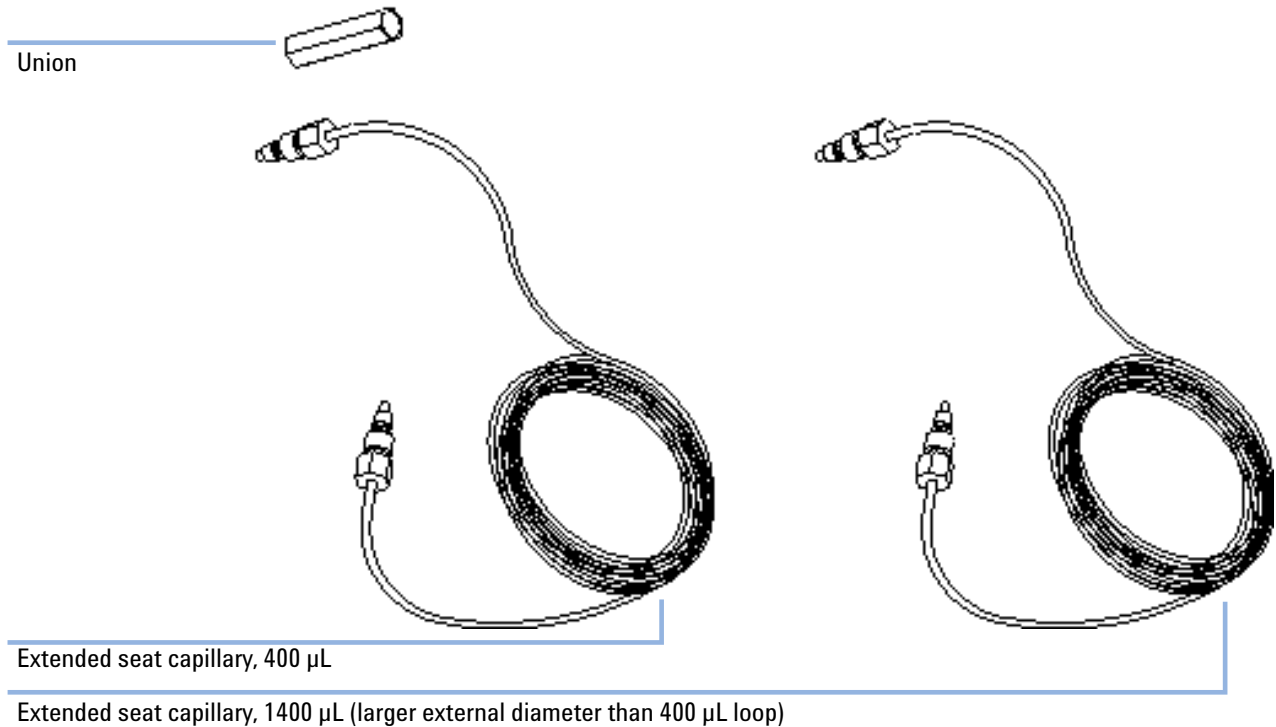
# Delivery Checklist

NOTE

Do not connect a waste outlet directly to the plastic waste tube (connected to port 4 of the injection valve). This can lead to siphoning effects, that will influence the precision of the autosampler.

Make sure all parts and materials have been delivered with the upgrade kit. Report missing or damaged parts to your local Agilent Technologies sales and service office.

p/n	Description
G1313-87307	Seat capillary, 500 µL, 0.5 mm id
G1313-87308	Seat capillary, 1500 µL, 0.9 mm id
0100-0900	Union

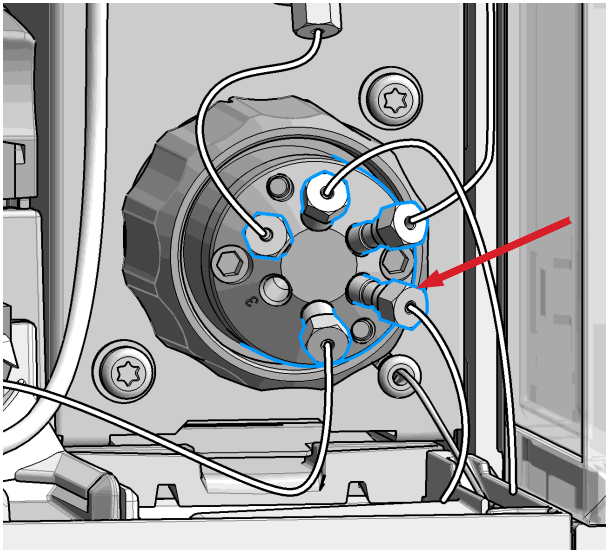
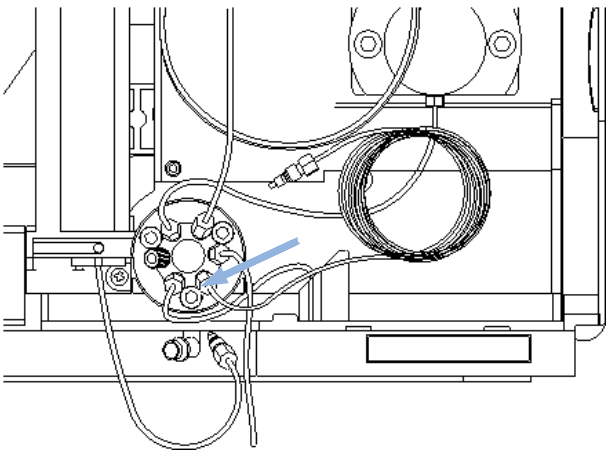
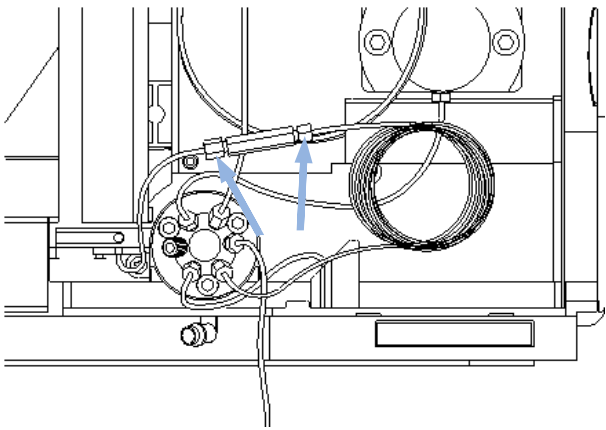


NOTE

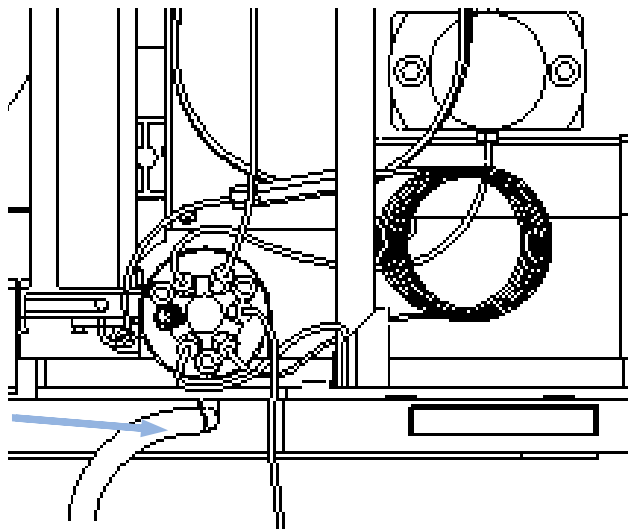
Extended seat capillary, 500 µL and Extended seat capillary, 1500 µL (larger external diameter than 400 µL loop) has SL Fittings which match for VICI and Rheodyne Valves

# Installing the Multidraw Infinity II Upgrade Kit

Tools required	p/n	Description
	Wrench, 1/4 inch (2x)	¼ inch wrench (one supplied in the autosampler accessory kit)

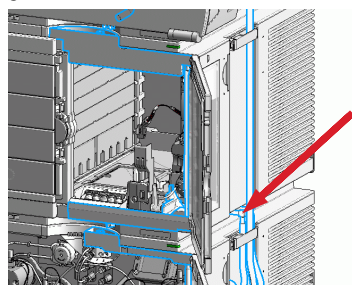
<p><b>1</b> Open the front door.</p> <p>OR</p> <p>For legacy autosampler remove the front cover.</p>	<p><b>2</b> Disconnect the seat-capillary fitting from the injection valve (port 5).</p> 
<p><b>3</b> Install the 400 or 1400 µL seat extension loop (longer side) to the injection valve (port 5).</p> 	<p><b>4</b> Install the union between the seat capillary and the other side of the seat extension loop. Store the extension loop in the leak tray.</p> 

- 5** For the legacy autosampler connect the waste tube to the waste outlet.



OR

For the multisampler connect the waste tube to the waste guidance.



Close the front door.

OR

For legacy autosampler install the front cover.

- 6** Connect the waste tube (shipped with the start up kit of your autosampler).

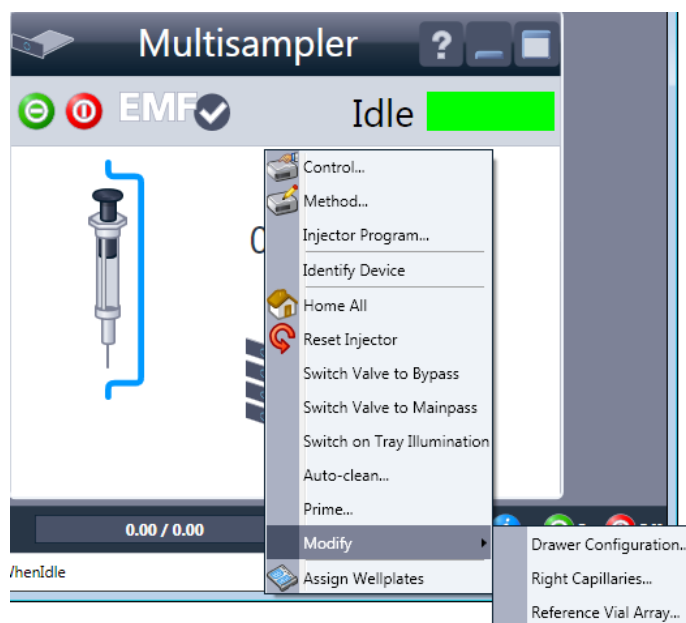
## Configuration of the Controller

The configuration of your controller is necessary to enable the multidraw mode.

When setting an injection larger as the configured injection volume the multidraw mode is active. Multiples of the injection syringe volume are stored in the extended seat capillary prior to switching the injection valve.

### OpenLab Configuration C.01.06 and above

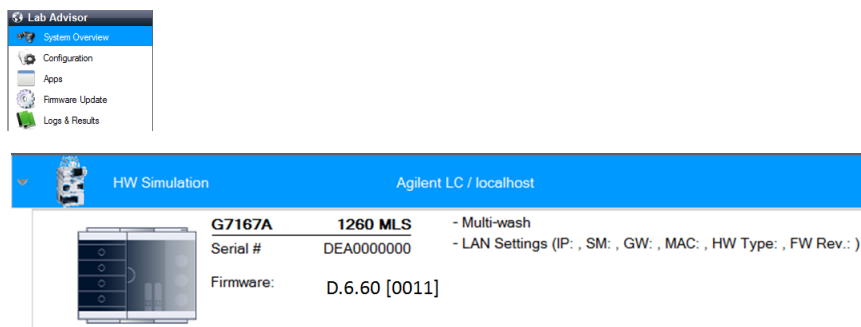
- 1 Select **Right Capillaries** in the instrument function.



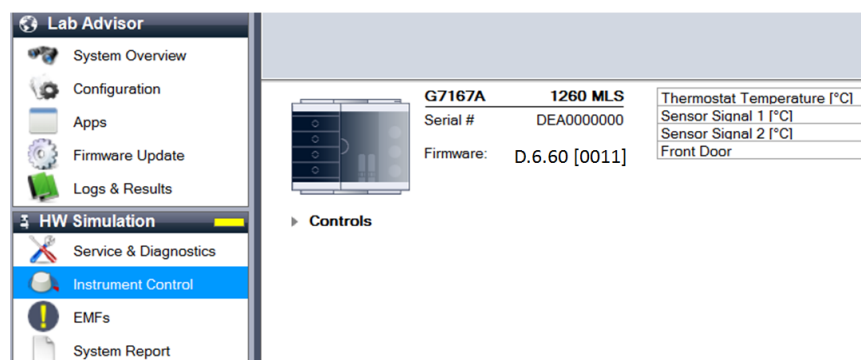
- 2 In the configuration menu change seat capillary to the value of the installed extended seat capillary (400  $\mu\text{L}$  or 1400  $\mu\text{L}$ ) and press **OK**.

## LabAdvisor Configuration for the Multisampler B.02.05 and above

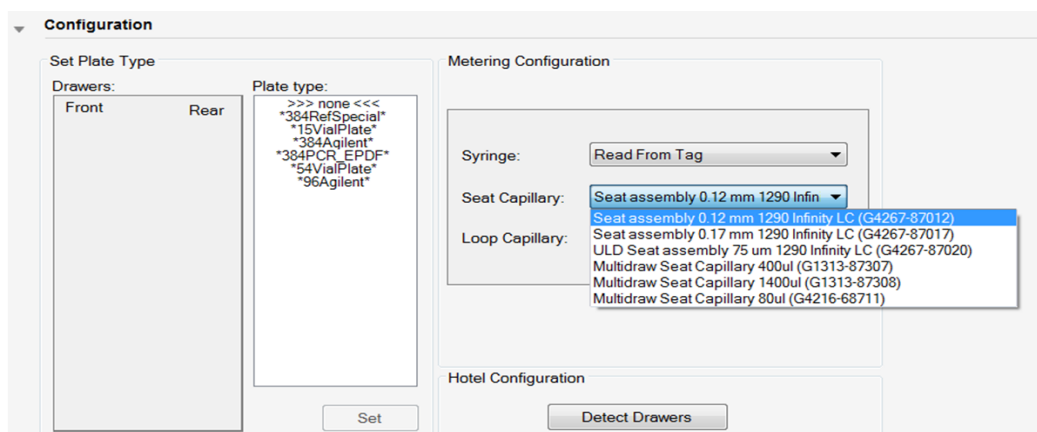
- 1 Select the Autosampler from the pull down menu.



- 2 Select and press **Instrument Control > Configure**



- 3 Select the volume for your installed extended seat capillary (400 µL or 1400 µL) from the **Seat Capillary** pull down menu.



## Legacy CDS systems for instant ChemStation Configuration

- 1 Select **More Injector** in the instrument function.
- 2 In the configuration menu change seat capillary to the value of the installed extended seat capillary (400 µL or 1400 µL) and press **OK**.

## Control Module Configuration

- 1 Press **System > Configure** and select the Autosampler from the pull down menu.
- 2 Select the volume for your installed extended seat capillary (400 µL or 1400 µL) from the Seat Capillary pull down menu and press **Done**.

## Instant Pilot

- 1 In the startup screen select **More > 1 Configure**.
- 2 Then select **Autosampler** and specify the **Volume** of the installed seat capillary and the **Multiple Draw Wait** time.



G7167-90121

Part Number: G7167-90121

Edition: 10/2014  
Printed in Germany

© Agilent Technologies, Inc 2014

Agilent Technologies, Inc  
Hewlett-Packard-Strasse 8  
76337 Waldbronn  
Germany