

LTM II System Parts List

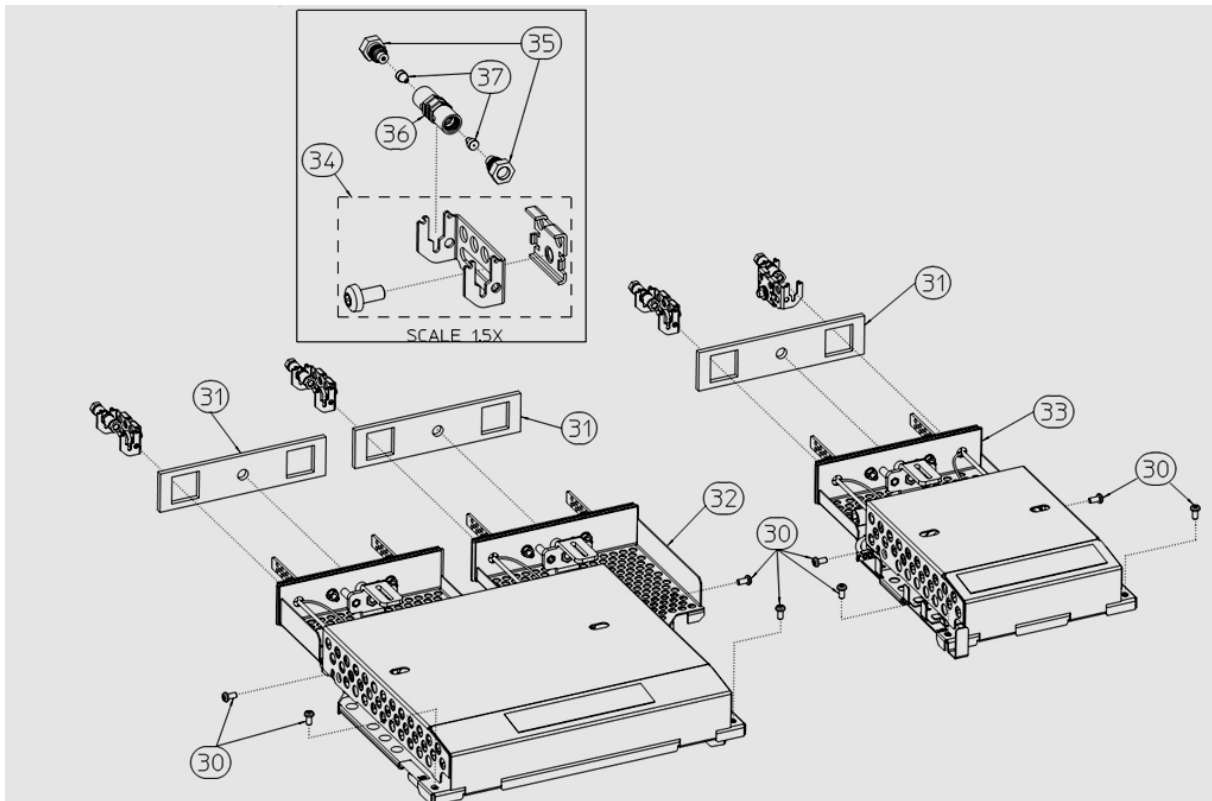
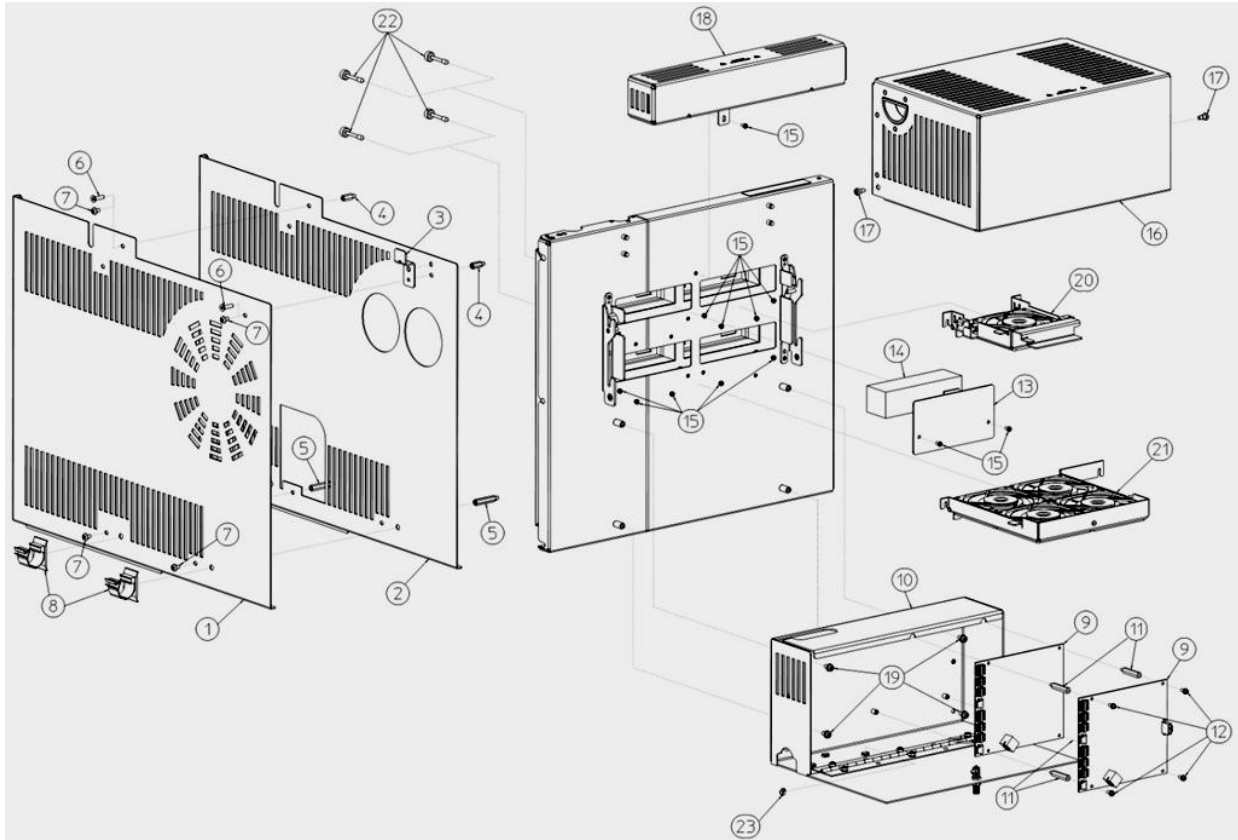
Systems

G6680A	LTM II System, w/ (2) 5" fans, (2) 5" transfer line modules, (2) Interface boards, (2) Power supplies
G6679A	LTM II System, w/ (2) 5" fans, (2) 5" transfer line modules, (1) Interface board, (1) Power supply
G6678A	LTM II System, w/ (1) 5" fan, (1) 5" transfer line module, (1) Interface board, (1) Power supply
G6674A	LTM II System, w/ (2) 3" fans, (2) 3" transfer line modules, (1) Interface board, (1) Power supply
G6673A	LTM II System, w/ (1) 3" fan, (1) 3" transfer line module, (1) Interface board, (1) Power supply

Upgrades (Adding LTM II electronics to LTM I System)

G6672A	Upgrade Kit for LTM II, includes electronics enclosure, (2) Interface Boards, (2) Power Supplies, acc. Can only be installed on 7890
G6671A	Upgrade Kit for LTM II, includes electronics enclosure, (1) Interface Board, (1) Power Supply, acc. Can only be installed on 7890

Low Thermal Mass (LTM)
Series II System



Modules

Part Number	IPB #	Description
G6578-64015	32	Transfer Line Module, for 5" Column Module
G6578-64025	21	Fan Assembly, for 5" Column Module
G6578-64013	33	Transfer Line Module, for 3" Column Module
G6578-64023	20	Fan Assembly, for 3" Column Module

Electronics

Part Number	IPB #	Description
G6578-65010	9	Interface PCB, tested for LTM II
G6578-60105		Power Supply for LTM II 100-230 VAC, 50/60 Hz Input
G6578-60110		Cable, LVDS, from Interface Board to 7890 1 shipped in G6578-64888 Ship Kit

Ferrules & Unions (350° C Max Temp)

Part Number	IPB #	Description
G6578-60122		Upgrade Kit for Sil Tite Unions on LTM Includes 2 brackets, 2 unions, nuts and ferrules
5188-5361	37	SilTite metal ferrules, 0.10-0.25 mm ID capillary columns, Package of 10
5188-5362	37	SilTite metal ferrules, 0.32 mm ID capillary columns, Package of 10
5188-5363	37	SilTite metal ferrules, 0.53 mm ID capillary columns, Package of 10
G3182-60580	36	Union, Inert, for Sil Tite fittings 36
G2855-20530	35	Nut, Internal, for Sil Tite Fittings 35
G6578-60121 (Not Orderable)	34	LTM Holder Assembly for Sil Tite fittings two used per transfer line module
G2855-20555		Swaging Nut, for Sil Tite Ferrules
G2855-60200		Swaging Tool for Sil Tite Ferrules

Hardware

Part Number	IPB #	Description
G6578-64888		LTMII Ship Kit
G6578-00502	31	Gasket, Transfer line module, 5 pack 5 shipped in G6578-64888 Ship Kit
0515-2035 <i>(Not Orderable)</i>	29	Screw, M3 x 0.5 x 16mm
0515-0680	15/30	Screw, Panhead, M3 x 6mm 10 shipped in G6578-64888 Ship Kit
G6578-00501	13	Close Out Plate for 7890 4 shipped in G6578-64888 Ship Kit
G6578-00503	14	Insulation Wool for cutouts 4 shipped in G6578-64888 Ship Kit
G6578-60024	1/2	Side Panel Assy, Including G6578-00028, G6578-00028
G6578-00028 <i>(Not Orderable)</i>	1	Metal Side Cover, no MS This can be ordered as part of G6578-60004
G6578-00029 <i>(Not Orderable)</i>	2	Metal Side Panel, cutout for MS This can be ordered as part of G6578-60004
G6578-00031	3	Cable Holder for MS Side Panel
1400-3432 <i>(Not Orderable)</i>	8	Cable Clamp, 37mm diameter Not used on MS systems
0515-0684	7	Screw, M4 x 6mm for installing metal side panel
0515-1034	6	Screw, Flat Head, M4 x 16mm Used when installing CTC PAL autosampler
0380-5099 <i>(Not Orderable)</i>	5	Standoff, M4 x 29mm Hex for installing metal side panel
0380-3062 <i>(Not Orderable)</i>	4	Standoff, M4 x 13mm Hex for installing metal side panel
G6578-00111	18	Heat Guard Assembly
G6578-60104	16	Module Cover, LTM II does not fit LTM I doors
0515-3005	17	Shoulder Screw, M4 To hold Module Cover in place
G6578-60101	10	Electronics Box Assembly
0380-3016 <i>(Not Orderable)</i>	11	Standoff, M3 x 28mm, Hex for installing Interface board
0515-0372	12	Screw, M3 x 8mm used to mount 2nd Interface board to standoffs
1400-0249	23	Cable tie for strain relief of LVDS Cable
0515-0433	19	Screw, M4 x 8mm for mounting electronics enclosure to door
G6578-80504	22	Thumbscrew, Short for installing LTM I Transline Modules
G6578-20027	22	Thumbscrew, Long for installing LTM II Transline Modules