



# Agilent CytoGenomics 5.1

## Feature Extraction for CytoGenomics

### Quick Start Guide

**For Research Use Only. Not for use in diagnostic procedures.**

What is Agilent Feature Extraction for CytoGenomics software?	2
Getting Help	4
Starting the program	6
Setting up a Standard Project to extract Agilent and non-Agilent image files	10
Setting up an On-Time project to extract Agilent image files in real time	20

This Quick Start Guide provides an overview of how to use the Feature Extraction for CytoGenomics software as a stand-alone program, with step-by-step instructions on how to start the program and run an extraction. Although it is not normally necessary to run the Feature Extraction program separately, reading the information in this guide can help you understand how Agilent CytoGenomics extracts data from images during a workflow. For a complete description of the Feature Extraction main window and its components, see the *Feature Extraction for CytoGenomics Users Guide*.



**Agilent Technologies**

## What is Agilent Feature Extraction for CytoGenomics software?

The Feature Extraction for CytoGenomics software is installed as part of the Agilent CytoGenomics software package. Normally, it runs in the background to automatically extract microarray images in Agilent CytoGenomics workflows. It finds and adjusts microarray grids, rejects outlier pixels, accurately calculates feature intensities and ratios, flags outlier features, and calculates statistical confidences. The extracted microarray files are then analyzed by the Agilent CytoGenomics software.

It is not necessary to run the Feature Extraction program separately, except in the following situations:

- Automatic grid placement for a microarray failed and requires manual grid adjustment
- Changes to a protocol are required

Agilent Feature Extraction software extracts data from microarray images produced in three different situations:

- Agilent microarrays scanned on an Agilent scanner
- Agilent microarrays scanned on a supported non-Agilent scanner (i.e., Roche NimbleGen MS 200 scanners, Molecular Devices GenePix scanners, select Innopsys InnoScan scanners, and select Tecan scanners)
- Non-Agilent microarrays scanned on an Agilent scanner (only if the necessary protocol is imported into Feature Extraction for CytoGenomics; download protocols from [www.agilent.com/genomics](http://www.agilent.com/genomics))

Feature Extraction handles each of these images differently. These differences are described throughout the documentation.

### If you are a new user

Read [“Getting Help”](#) on page 4.

If you intend to analyze...

- Saved Agilent images, read the [“Instructional overview”](#) on page 10.
- Saved non-Agilent images, read the [“Instructional overview”](#) on page 10.
- Agilent images in real time, read the [“Instructional overview”](#) on page 20, and go to [“General Instructions”](#) on page 21.

## About installed grid templates, protocols, and QC metric sets

When Feature Extraction for CytoGenomics is installed as part of the installation of Agilent CytoGenomics, a standard set of Feature Extraction grid templates, protocols, and QC metric sets are also included in the database. These are displayed when you open Feature Extraction for CytoGenomics.

Grid templates (design files) cannot be imported from within the Feature Extraction for CytoGenomics program; they must be imported as design files from within the Agilent CytoGenomics program. See the CytoGenomics help system for more information.

As of version 5.0, the preloaded protocols in Feature Extraction for CytoGenomics use an enhanced gridding algorithm. The enhancements include a new iterative method for determining grid position, rotation, and skew, and several “fine” grid tuning methods that improve the calculation of rotation and skew. Enhanced gridding also uses both the foreground and background of the corner stencil patterns to improve identification of grid corners.

## To update the list of displayed files

Design files and QC metric sets that were created or imported in Agilent CytoGenomics are automatically displayed in Feature Extraction for CytoGenomics when you start the program. Also, protocols and QC Metric Sets that were created or imported from within the Feature Extraction for CytoGenomics program are automatically displayed within the Agilent CytoGenomics program.

To update the list of files displayed in the Feature Extraction for CytoGenomics browsers,

- Right-click in the Grid Template, Protocol, or QC Metric Set Browser, and then select **Refresh**.

## Getting Help

### To get help for Feature Extraction for CytoGenomics

The following tables list the resources available for getting help. Guides and manuals are in PDF format.

Help Resource	Description/Instructions
Feature Extraction Quick Start Guide	This guide, which you are reading, gives you an overview of the Feature Extraction software, including tutorial exercises. To open this guide from within Feature Extraction for CytoGenomics click <b>Help &gt; Quick Start Guide</b> .
Feature Extraction User Guide	A comprehensive guide for using the Feature Extraction software, that includes the following chapters: <ul style="list-style-type: none"> <li>• Chapter 1– Working with Feature Extraction</li> <li>• Chapter 2– Extracting Microarrays Automatically</li> <li>• Chapter 3– Creating Grid Files and Templates</li> <li>• Chapter 4– Changing Protocol Settings</li> <li>• Chapter 5– Changing Image Displays</li> </ul> To open this guide from within Feature Extraction, click <b>Help &gt; User Guide</b> .
Feature Extraction Reference Guide	A reference guide that contains information about protocols, QC reports, results, and algorithms, that includes the following chapters: <ul style="list-style-type: none"> <li>• Chapter 1 – Default Protocol Settings</li> <li>• Chapter 2 – QC Report Results</li> <li>• Chapter 3 – Text File Parameters and Results</li> <li>• Chapter 4 – MAGE-ML Results</li> <li>• Chapter 5 – How Algorithms Calculate Results</li> </ul> To open this guide from within Feature Extraction, click <b>Help &gt; Reference Guide</b> .
Technical Support	Opens a link to the Agilent Technical Support Web site where you can find literature and manuals, view Frequently Asked Questions, and download updates and revision information. There is also a <b>Contact Us</b> link where you can locate the technical support phone number or send an e-mail to technical support for your country.

Help Resource	Description/Instructions
Feature Extraction Training	Opens a link to the Feature Extraction Tutorials Web Site, where you can view a number of self-paced instructional tutorials. To open this Web site from within Feature Extraction, click <b>Help &gt; Feature Extraction Training</b> .
Feature Extraction on the Web	Opens a menu that provides links to the following: <ul style="list-style-type: none"><li>• <b>Array annotation</b> – Find available design files by barcode</li><li>• <b>Feature Extraction Software</b> – Feature Extraction software downloads and information</li><li>• <b>Feature Extraction Protocols</b> – Download current and previous versions of Feature Extraction protocols</li></ul>
Agilent License	Opens the Agilent software license redemption Web site, where you use your entitlement certificate to redeem your software license.
Memory Status	Opens an information window that shows how much computer memory is currently available and how much memory is in use.
About	Opens an information window that shows your Feature Extraction version, license, and database information. This window also displays your computer Host ID, which you need in order to redeem your license.

## To learn about Agilent Genomics products and services

To view information about the Genomics products and services that are available from Agilent, go to [www.agilent.com](http://www.agilent.com).

## Starting the program

Feature Extraction for CytoGenomics is installed when you install the Agilent CytoGenomics software. A shortcut is *not* installed for the Feature Extraction for CytoGenomics software.

Note that Feature Extraction for CytoGenomics is not supported on Macintosh systems and is not installed with the Macintosh version of the Agilent CytoGenomics software. To run an analysis workflow, you must first extract the image file using the standalone Agilent Feature Extraction program (on a Windows PC), then use the extracted FE file to run a manual workflow in the Macintosh version of CytoGenomics.

### CAUTION

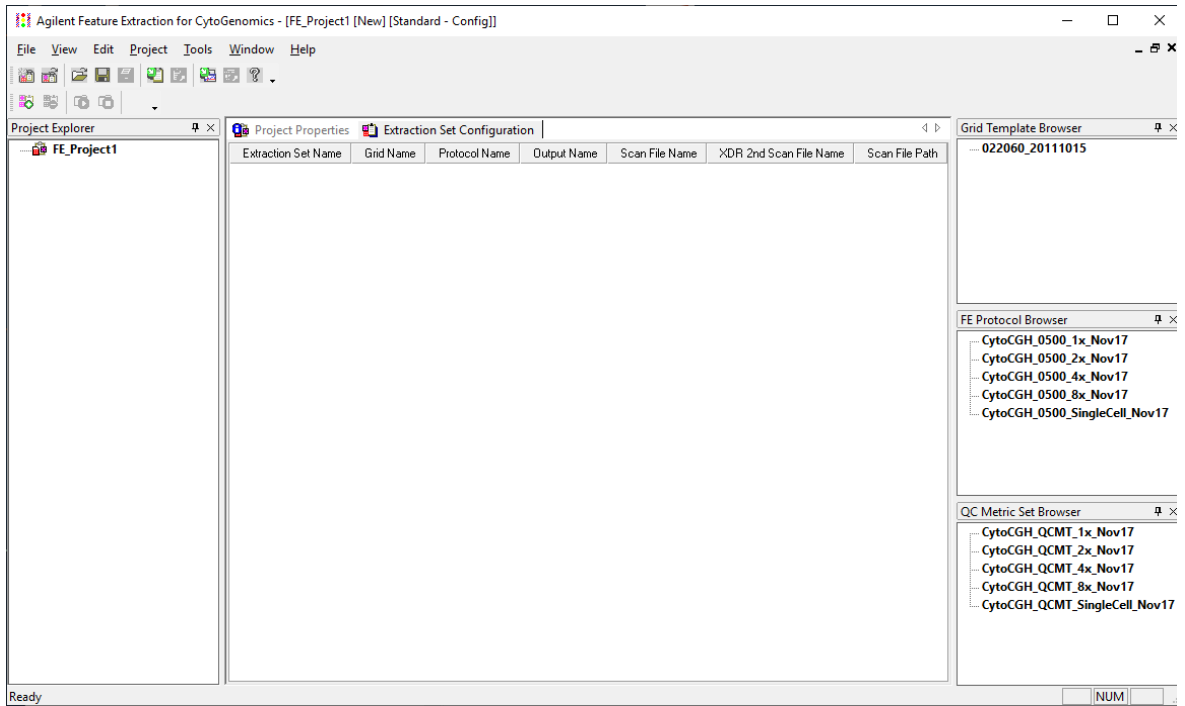
If you install Agilent Genomic Workbench and Agilent CytoGenomics on the same computer, each program installs its own version of Feature Extraction. Do not confuse Feature Extraction with Feature Extraction for CytoGenomics. A shortcut appears only for Feature Extraction version 10.10 (used with Agilent Genomic Workbench.)

---

To start Feature Extraction for CytoGenomics:

- From Windows, click **Start > All Programs > Agilent CytoGenomics > Agilent Feature Extraction for CytoGenomics.**

Now you see the Feature Extraction for CytoGenomics main window.



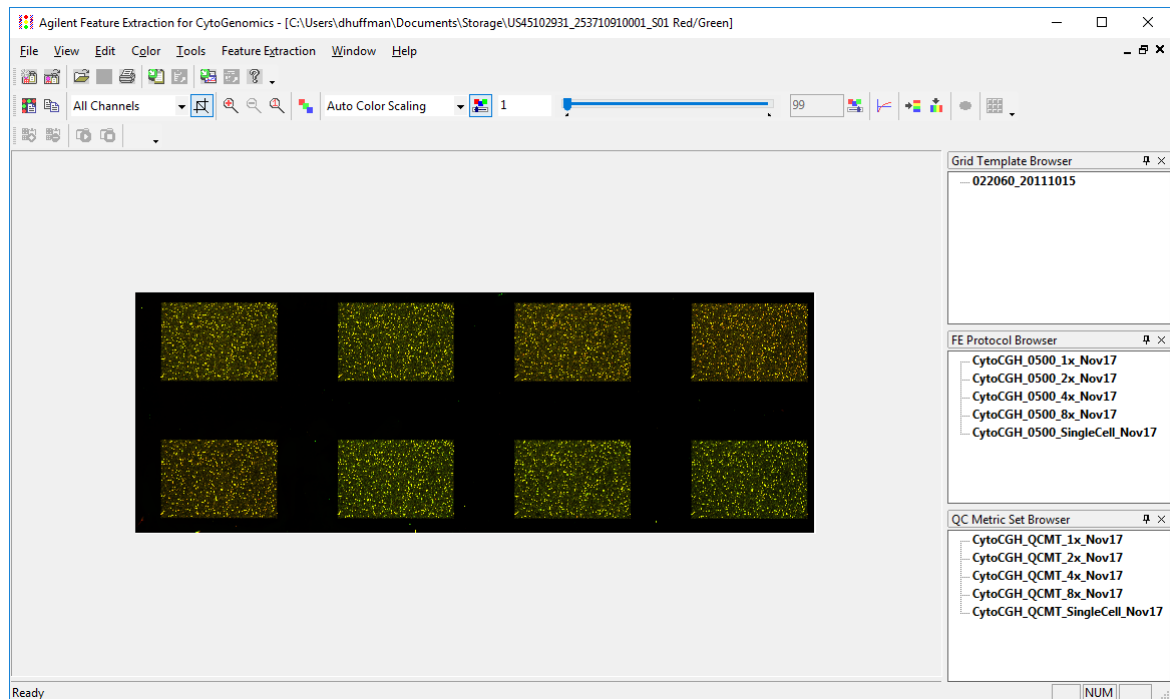
**Figure 1** Feature Extraction for CytoGenomics main window

To open an image file

## To open an image file

- 1 With the Feature Extraction for CytoGenomics main window open, click **File > Open > Image**, and browse to the folder that contains the image file. Double-click the image file (.tif) that you want to open.

If the Feature Extraction for CytoGenomics program is running, you can also “drag and drop” the image from your folder to the open Feature Extraction window.



**Figure 2** Feature Extraction for CytoGenomics Main Window with open image

### NOTE

For high resolution images (2 or 3 micron or 20-bit), you see a low-resolution preview image until you crop to roughly 1/10 of the preview image size. Then you see the original high-resolution image. [The Crop Cursor turns red when you are outside the high-resolution (High Fidelity) region.]



To learn more about interactively finding spots and creating grid files for non-Agilent images, see Chapter 3, “Creating Grid Files”, in the *Feature Extraction for CytoGenomics User Guide*.

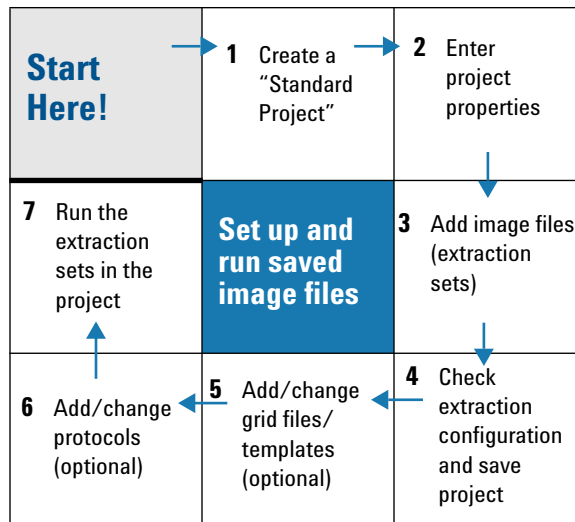
To learn more about changing the image display, see Chapter 5, “Changing Image Displays”, in the *Feature Extraction for CytoGenomics User Guide*.

## Setting up a Standard Project to extract Agilent and non-Agilent image files

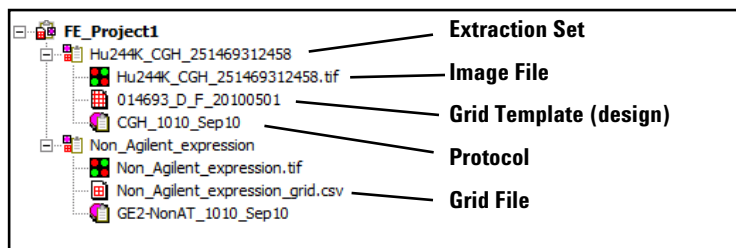
### Instructional overview

Follow the road map below and the instructions on the next pages to get started.

See Chapter 2 in the *Feature Extraction for CytoGenomics User Guide* for details on this task.



The Agilent Feature Extraction for CytoGenomics program works with Agilent or non-Agilent microarray images produced on Agilent scanners, and Agilent microarray images produced on non-Agilent scanners, using projects, extraction sets, grid templates or files, and protocols. The images are organized into extraction sets that contain the grid and protocol information to run the extraction. The extraction sets, in turn, are organized into projects.



**Figure 3** Project Explorer with expanded extraction sets

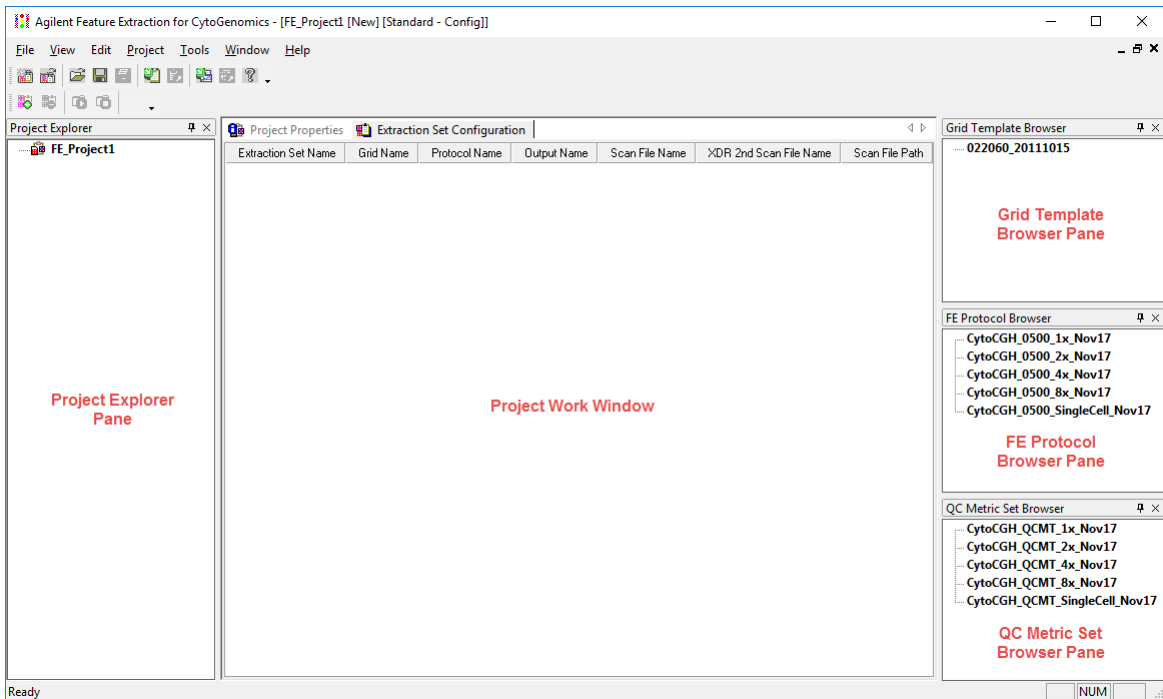
- project** A grouping of information that contains one or more *extraction sets* that define the files to use in the extraction.
- extraction set** Each group that contains a microarray image file, grid template (or grid file) and protocol within a project. This term is used both before and after extraction.
- grid template** Grid information from Agilent design files or grid files stored in the database. A grid template includes feature annotation and general geometry about the microarray (number of rows, columns, subgrids, feature spacings), which is used to find spots before data analysis takes place. Although not specific to any microarray image, grid template information is usually applied to the image for which the template was designed.
- grid file** Grid files are required in order to do feature extraction for non-Agilent images. Rarely, the automatic grid placement of Agilent images using a grid template may produce an incorrect grid, which will also require the use of a user-generated grid file. When using a grid file, extraction uses the nominal and “found” spot locations specific to the image from which the grid file was created. Grid files are created in the Feature Extraction for CytoGenomics program using a microarray image file and a microarray layout file (such as an Agilent Design file or a .GAL [GenePix Array List] file). The grid file contains the locations of the “found” spots if the “Calculate spot size and centroids” option is run before the file is saved. You can create grid templates from grid files, although the templates have only geometry information, no found spots.
- protocol** A list of steps and parameter values that define the data analysis algorithms and calculations used for feature extraction of a microarray image or images.

## General Instructions

### Step 1. Create a Standard Project

- If the Feature Extraction for CytoGenomics program is not already running, start the program according to the instructions given above. See “Starting the program” on page 6.

Feature Extraction automatically creates a standard project (FE\_Project1) every time you start the program. The Feature Extraction main window appears with the Project1 work window and an empty Extraction Set Configuration tab window.



**Figure 4** Feature Extraction main window components – The browser panes on the right side of the program window are only visible when they are selected in the program’s View menu

You can change where and how the project work window and the browser panes dock when you start the program. To learn more about working with this interface, see the *Feature Extraction for CytoGenomics User Guide*.

## Step 2. Enter the project properties

- 1 Click the **Project Properties** tab to view the default project properties.
- 2 To change a default setting, select a property and click the down arrow that appears on the right column. Choose from the available options.

Project Properties   Extraction Set Configuration	
General	
Operator	Unknown
Input	
Number of Extraction Sets Included	0
Output and Data Transfer	
Outputs	
MAGE	None
JPEG	None
TEXT	Local file only
Output Package	Compact
Zip Text File	False
Visual Results	Local file only
Grid	None
QC Report	Local PDF file only
FTP Send Tiff File	False
Crop multipack image to individual arrays	False
Local File Folder	
Same As Image	True
Results Folder	
FTP Setting	
Post Processing Plug Ins	
Automatic Protocol Assignment	
Highest Priority Default Protocol	Grid Template Default
Project Default Protocol	
Automatic Grid Template Assignment	
Use Grid file if available	False
External DyeNorm List File	
Overwrite Previous Results	False

**Figure 5** Default project properties for a standard project

You can run Feature Extraction for one or more Agilent images generated by the Agilent scanner with these default project properties. You can also set up and run multiple extractions with a combination of Agilent and non-Agilent images.

### Step 3. Add image files (extraction sets) to the project

- 1 In the Project Explorer, right-click **FE\_Project1**, and click **Add Extraction**.
- 2 Select one or more images, and click **Open**.
  - To select multiple images at a time, hold down the **Ctrl** key and select the images.
  - You can also add one or more image files by dragging and dropping them from the folder to the open project in the Feature Extraction window.

Any extraction set that is missing the required components, such as grid template or protocol, shows a lightning bolt in Project Explorer and a “?” in the icon of the missing component. If a grid template is not in the database, you must import it from within the Agilent CytoGenomics program before you run the extraction.

If grid templates are not assigned automatically, or you want to use a different grid template or protocol, you can assign them manually. See Step 4 “[Step 4. Assign grid template/grid file to the extraction set \(depending on type of images\)](#)” on page 14 and Step 5 “[Step 5. Assign a protocol to the extraction set \(optional\)](#)” on page 16.

### Step 4. Assign grid template/grid file to the extraction set (depending on type of images)

**Agilent images** By default, if the required grid templates are in the database, when you add Agilent tiff images to the project, Feature Extraction will automatically associate the appropriate grid templates to the extraction sets. You can also assign a grid template or grid file to the Agilent image.

To assign a grid template for Agilent images:

- 1 Expand the extraction set.
- 2 Select a grid template from the Grid Template Browser, hold down the mouse button and drag it to the second position of the extraction set in Project Explorer.
- 3 Let go of the mouse button to drop it at this position.

To assign a grid file for Agilent images:

- 1 Right-click the second position of the expanded extraction set and click **Select Grid File**.
- 2 Select the grid file, and click **Open**.

The grid file name will appear in the extraction set, along with the grid template on which it is based.

**Non-Agilent images** You must assign a grid file to non-Agilent images in the project. The extraction automation feature is not supported for non-Agilent images. Feature Extraction for CytoGenomics will not extract non-Agilent images that are missing grid files or protocols.

To assign a grid file for non-Agilent images:

- 1 Right-click the second position of the expanded extraction set and click **Select Grid File**.
- 2 Select the grid file, and click **Open**.

AMADID is the  
Agilent MicroArray  
Design Identifier.

**Agilent microarray images scanned with an Agilent scanner** For Agilent microarray images with barcode information included in the image, the program selects a grid template from the database using the AMADID portion of the barcode associated with the image file. If there are grid templates for that AMADID that come from multiple design files, the program selects the grid template from the most recently created Agilent design file. To add a barcode if the image has none, see the *Feature Extraction for CytoGenomics User Guide*.

For this automated assignment to work, the grid template must exist in the database. If it does not, you can interactively associate a grid template or grid file with the extraction set. See [page 14](#) for details on how to assign a grid template or grid file.

Agilent uses barcode information for many workflow automation and data tracking steps. Inclusion of the Agilent barcode information in the TIFF file helps ensure that the data is quickly, easily and accurately processed and that informatics programs know how to analyze the results.

**Agilent microarray images scanned with a non-Agilent scanner** For Agilent microarray images generated on Roche NimbleGen MS 200 scanners, Molecular Devices GenePix scanners, select Innopsys InnoScan scanners or

select Tecan scanners, the program selects a grid template using the same method described above for Agilent microarray images scanned with an Agilent scanner.

**Non-Agilent images scanned with an Agilent scanner** Non-Agilent image files from an Agilent scanner do not point to grid information that the Agilent Feature Extraction program can read. Therefore, when you load the non-Agilent image file, you must add a grid file that you have already created.

See Chapter 3 in the *Feature Extraction for CytoGenomics User Guide* to learn how to create grid files.

### **Step 5. Assign a protocol to the extraction set (optional)**

Automatically assigned protocols come from two sources: a default protocol associated with the grid template, or a project level default protocol. You select which of these options has the higher priority. (See the *Feature Extraction for CytoGenomics User Guide* to learn how to associate a protocol with a grid template and where to enter the project level default protocol.) You can also add a protocol to the extraction set manually.

To add a protocol manually:

- 1 From the Protocol Browser select a protocol, hold down the mouse button and drag it to the third position of the extraction set.
- 2 Release the mouse button to drop the protocol onto the third position of the set.

Feature Extraction for CytoGenomics can run analyses on Agilent 1-color gene expression (GE1), 2-color gene expression (GE2), CGH, CGH+SNP, ChIP, miRNA, and non-Agilent 2-color GE (GE2-nonAT) microarray images scanned on the Agilent scanner. Feature Extraction for CytoGenomics contains a protocol for extracting CGH and CGH+SNP image types. To run extractions on other Agilent image types (GE1, GE2, ChIP, and miRNA), or on non-Agilent 2-color GE array images, you must first download the required protocol from the Agilent Genomics website, import it into Feature Extraction for CytoGenomics, and then assign it to the appropriate grid template. See the *Feature Extraction for CytoGenomics User Guide* for instructions on importing protocols and associating a protocol with a grid template.



**CAUTION**

These Feature Extraction Protocols were optimized using data from Agilent catalog arrays, which have many replicated probes and validated Negative Control probes. If custom arrays without enough replicated probes are used, or arrays with custom probes designated as Negative Control probes, the default Feature Extraction Protocols may not be optimal. The Feature Extraction Protocol optimization also uses Agilent's default lab protocols; that is, label, hybridization, wash, and scanner procedures.

---

**Step 6. From within the Agilent CytoGenomics program, add design files for the images you intend to extract (optional)**

Every extraction set must have an image file, assigned grid template/grid file and protocol. Grid templates and protocols for Agilent images are loaded to the extraction set automatically by the program, if the grid template associated with the loaded image's design file is available in the database. If the design file in the database, it is displayed in the Grid Template Browser. (To update the list, right-click in the Grid Template Browser, and select **Refresh**.) If the design file is not in the database, you must import it manually from within the Agilent CytoGenomics program using the instructions below.

- 1 Launch Agilent CytoGenomics 5.1.
- 2 From the Supporting Files tab, click **Import Design**.
- 3 Select a design file (format \*.xml) to import into the CytoGenomics database.

See the CytoGenomics help system for more information on importing design files.

**Step 7. Change QC metric set associated with the protocol to monitor QC metrics (optional)**

When the microarray processing protocols are similar and monitoring run-to-run consistency is an important goal, Feature Extraction for CytoGenomics can help monitor this consistency with the QC metric sets.

To change the QC metric set associated to the Feature Extraction for CytoGenomics protocol:

- 1 In the FE Protocol Browser, double-click a protocol to open the FE Protocol Editor. (If the browser is not currently visible on your program window, click **View > FE Protocol Browser**.)
- 2 Select **Protocol Properties** to see the protocol properties.
- 3 Under **General**, click the cell next to **Metricset**.
- 4 Click the down arrow, and select the QC metric set appropriate for your microarray application.

If a metric set you want to use is not available in the metric set list, you must first import it to the database.

To import a QC metric set into the database:

- 1 Select **View > QC Metric Set Browser** from Feature Extraction for CytoGenomics main window, if it is not already visible.
- 2 The QC Metric Set Browser displays all of the default metric sets and custom metric sets in the database. Custom metric sets are created using the Quality module in the Agilent CytoGenomics program. Right-click in the QC Metric Set Browser and select **Import** to import metric sets that are not shown in the QC Metric Set Browser, or select **Refresh** to update the list.

The default QC metric sets installed with the Feature Extraction software are read-only and cannot be removed from the database. However, you can remove or change a QC metric set associated with the protocol and then save it as a new protocol with a different name.

To remove a QC metric set from the protocol:

- Select **<Set empty>** from the metric set list in the Protocol Properties.
- 5 Click **Save As** to save the new protocol.

**QC metric sets** A default CGH QC metric set is loaded into the database when the Feature Extraction for CytoGenomics software was installed.

### CAUTION

Agilent-supplied QC metric sets are intended to assist users in monitoring microarray processing issues. They were not developed to detect microarray manufacturing issues.

When you create QC metric sets using Agilent CytoGenomics, you can associate them to protocols in Feature Extraction for CytoGenomics. When a project associated with a QC metric set is run, the Feature Extraction for CytoGenomics program summarizes the metric statistics on each microarray's QC report and shows how the results compare to the thresholds (if any) defined in the metric set. It also reports this information in the output files in the statistics table.

### Step 8. Save the project


**1** Select **File > Save As**.

By default, your projects are saved to the following file path:  
C:\ProgramData\Agilent\FeatureExtractionCyto\FEProjects

**2** To save in a different location, go to or create the folder for your projects.

**3** Type a project name, and click **Save**.

### Step 9. Run Feature Extraction

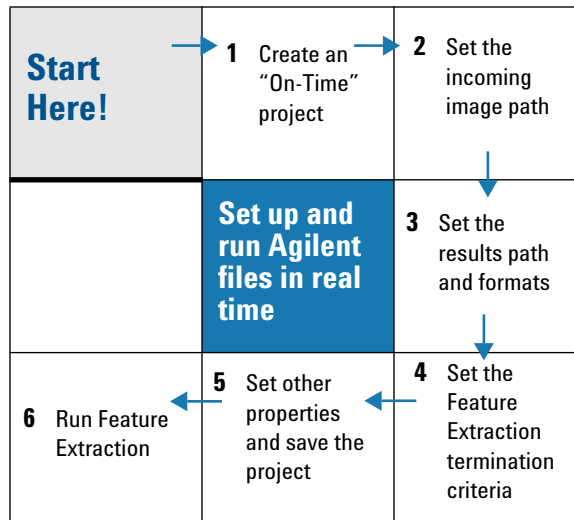
- Click the **Project Run mode On/Off** button on the Feature Extraction Project toolbar , or select **Project > Start Extracting**.

## Setting up an On-Time project to extract Agilent image files in real time

### Instructional overview

An On-Time project lets you set up the Feature Extraction software to automatically extract Agilent microarray image files as they are transferred from the Agilent scanner to a folder of your choosing.

Follow the workflow below and the instructions on the next pages to get started.



#### NOTE

On-Time projects work only with Agilent microarrays scanned on the Agilent scanner.

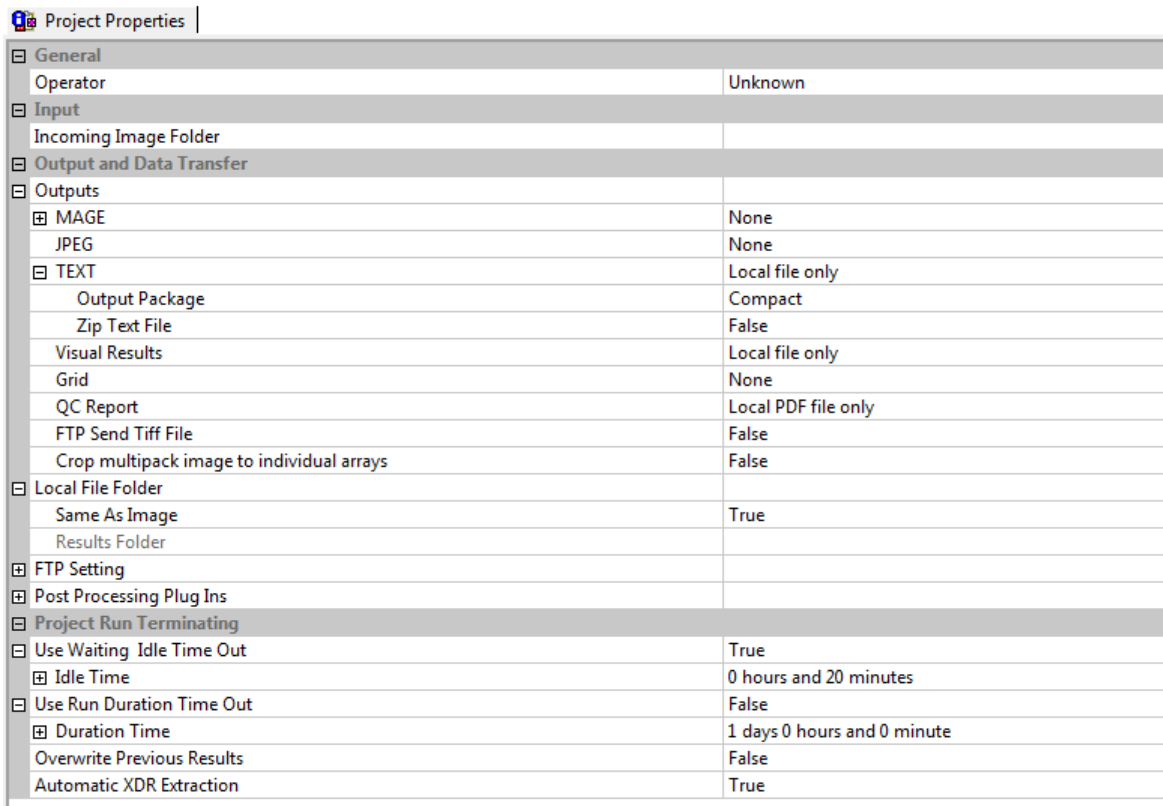
## General Instructions

These instructions help you set up the program to run a batch of Agilent microarray images in real time as they arrive from the Agilent scanner to a folder of your choosing.

### Step 1. Create an on-time project

- Select **File > New > On-Time Project**.

Note that you do not add extraction sets to on-time projects.



Project Properties	
General	
Operator	Unknown
Input	
Incoming Image Folder	
Output and Data Transfer	
Outputs	
MAGE	None
JPEG	None
TEXT	Local file only
Output Package	Compact
Zip Text File	False
Visual Results	Local file only
Grid	None
QC Report	Local PDF file only
FTP Send Tiff File	False
Crop multipack image to individual arrays	False
Local File Folder	
Same As Image	True
Results Folder	
FTP Setting	
Post Processing Plug Ins	
Project Run Terminating	
Use Waiting Idle Time Out	True
Idle Time	0 hours and 20 minutes
Use Run Duration Time Out	False
Duration Time	1 days 0 hours and 0 minute
Overwrite Previous Results	False
Automatic XDR Extraction	True

**Figure 6** On-Time Project Properties window

### Step 2. Enter the incoming image path

- 1 Click the cell next to Incoming Image Folder, and select the path for your scanned images.
- 2 Click **OK**.

The software assigns the appropriate grid template to each of the Agilent microarrays and the appropriate protocol included in the Grid Template Properties sheet.

### Step 3. Enter termination criteria

- 1 Click the cell next to Use Run Duration Time Out, and select **True**.
- 2 If not expanded, expand the Duration Time folder.
- 3 Use the sliders to enter 0 for **Days**, 2 for **Hours** and 30 for **Minutes**.

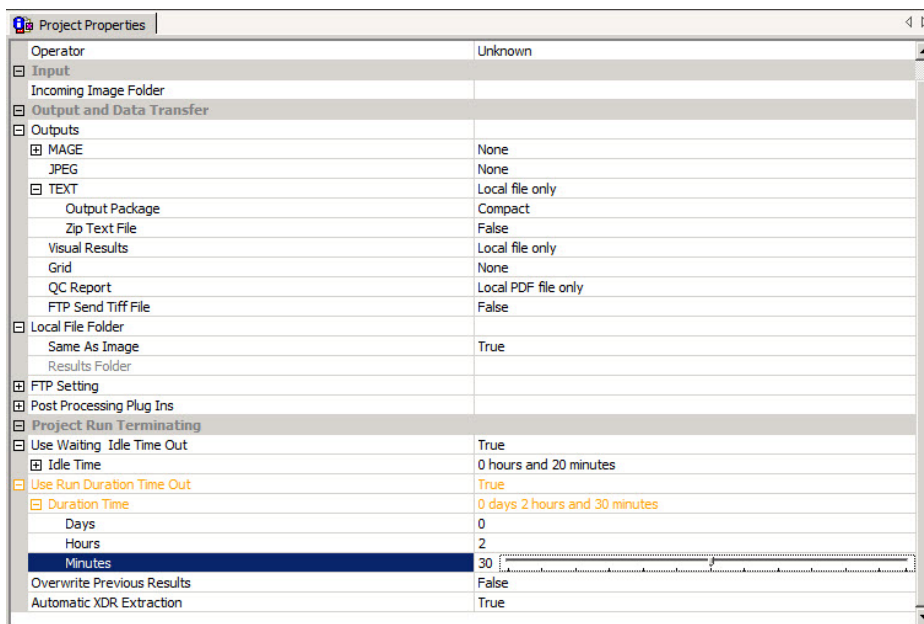


Figure 7 On-Time Project run terminating

#### Step 4. Change QC metric set associated with a protocol to monitor QC metrics

To change the QC metric set associated to the Feature Extraction protocol:

- 1 In the FE Protocol Browser, double-click a protocol to open the FE Protocol Editor.
- 2 Select the **Protocol Properties** tab to see the protocol properties.
- 3 Under General, click the cell next to **Metricset**.
- 4 Click the down arrow, and select the QC metric set appropriate for your microarray application.

If a metric set you want to use is not available in the metric set list, you must first import it to the database.

To import a QC metric set into the database:

- 1 Select **View > QC Metric Set Browser** from Feature Extraction main window, if it is not already visible.
- 2 Right-click in the QC Metric Set Browser and select **Import** to import a metric set.

The default QC metric sets installed with the Feature Extraction software are read-only and can not be removed from the database. But you can remove a QC metric set from the protocol.

To remove a QC metric set associated with the protocol:

- Select **<Set empty>** from the metric set list in the Protocol Properties.
- 5 Click **Save As** to save the new protocol.

#### Step 5. Save the project

- 1 Select **File > Save As**.

By default, your projects are saved to the following file path:  
C:\ProgramData\Agilent\FeatureExtractionCyto\FEProjects

- 2 To save in a different location, go to or create the folder for your projects.
- 3 Type a project name, and click **Save**.

### Step 6. Run an extraction

- 1 Make sure that the scanner is ready.
- 2 Click the **Project Run mode On/Off** icon in the Feature Extraction Project Tools, or select **Project > Start Extracting**.

The image files are saved to the Incoming Image Folder as they complete scanning and are then extracted automatically.

You can display the progress of the extractions, the Summary Report, and the QC Report as you did for the Standard Project extractions.

The Summary Report notes how many metrics are within range for each extraction. The QC report for each image contains the values for the metrics and an evaluation of whether they were within or exceeded the threshold limits.



[www.agilent.com](http://www.agilent.com)

## In this book

This book contains brief instructions to help you get started with your Feature Extraction for CytoGenomics software. This book shows you:

- How to set up and run batch extractions of existing Agilent and non-Agilent image files
- How to set up and run batch extractions of Agilent image files in real time

© Agilent Technologies, Inc. 2019

Revision A0, December 2019



G1662-90062