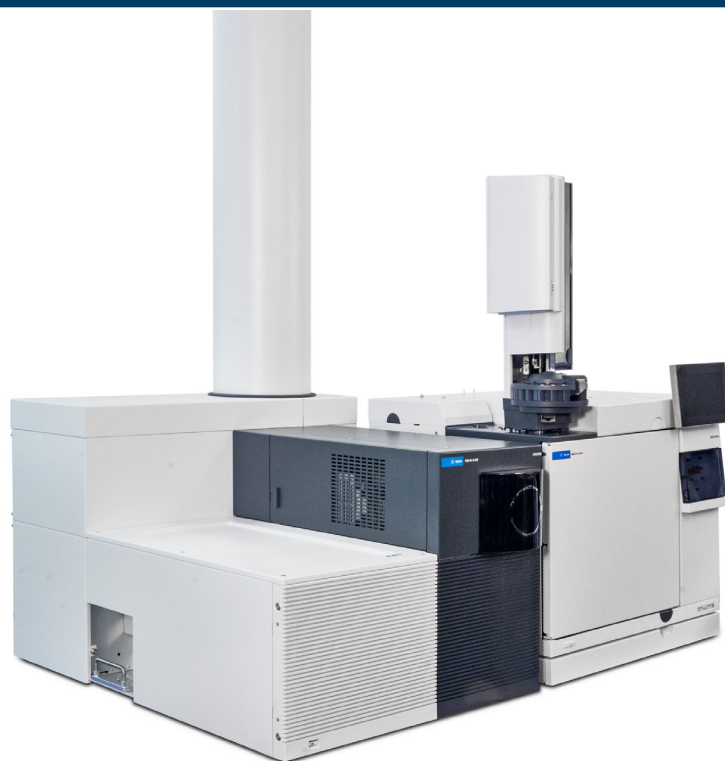


# Agilent 7250 Accurate-Mass Quadrupole Time-of-Flight (Q-TOF) GC/MS System

## Quick Start



# Notices

© Agilent Technologies, Inc. 2019

No part of this manual may be reproduced in any form or by any means (including electronic storage and retrieval or translation into a foreign language) without prior agreement and written consent from Agilent Technologies, Inc. as governed by United States and international copyright laws.

## Manual Part Number

G7250-90014

## Edition

First Edition, January 2019

Printed in USA

Agilent Technologies, Inc.  
5301 Stevens Creek Boulevard  
Santa Clara, CA 95051

## Warranty

The material contained in this document is provided “as is,” and is subject to being changed, without notice, in future editions. Further, to the maximum extent permitted by applicable law, Agilent disclaims all warranties, either express or implied, with regard to this manual and any information contained herein, including but not limited to the implied warranties of merchantability and fitness for a particular purpose. Agilent shall not be liable for errors or for incidental or consequential damages in connection with the furnishing, use, or performance of this document or of any information contained herein. Should Agilent and the user have a separate written agreement with warranty terms covering the material in this document that conflict with these terms, the warranty terms in the separate agreement shall control.

## Technology Licenses

The hardware and/or software described in this document are furnished under a license and may be used or copied only in accordance with the terms of such license.

## Restricted Rights Legend

U.S. Government Restricted Rights. Software and technical data rights granted to the federal government include only those rights customarily provided to end user customers. Agilent provides this customary commercial license in Software and technical data pursuant to FAR 12.211 (Technical Data) and 12.212 (Computer Software) and, for the Department of Defense, DFARS 252.227-7015 (Technical Data -Commercial Items) and DFARS 227.7202-3 (Rights in Commercial Computer Software or Computer Software Documentation).

## Safety Notices

### CAUTION

A CAUTION notice denotes a hazard. It calls attention to an operating procedure, practice, or the like that, if not correctly performed or adhered to, could result in damage to the product or loss of important data. Do not proceed beyond a CAUTION notice until the indicated conditions are fully understood and met.

### WARNING

A WARNING notice denotes a hazard. It calls attention to an operating procedure, practice, or the like that, if not correctly performed or adhered to, could result in personal injury or death. Do not proceed beyond a WARNING notice until the indicated conditions are fully understood and met.

# Welcome to the Agilent 7250 Q-TOF System

Your system includes the **Agilent 7250 Q-TOF**, an **Agilent 8890** or **7890B GC**, and **Agilent MassHunter Workstation Software**.

Also included with your system is a comprehensive collection of manuals, videos, eFamiliarization, user applications, and method development tools. These are located on the:

- **Agilent GC and GC/MS User Manuals and Tools** DVD set
- **Agilent GC/MS Software Information and Manuals** memory stick

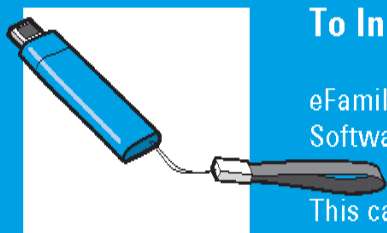
This book tells you how to install this information on your computer and provides a brief summary of some of the included documents.



## To Install Your Hardware Library - See Page 6

Hardware tools and manuals are on the GC and GC/MS Manuals and Tools DVD set.

This can be installed by anyone who has authority to copy information onto the receiving computer.



## To Install Your Software Library - See Page 8

eFamiliarization and software manuals are on the GC/MS Software Information and Manuals memory stick.

This can be installed by anyone who has authority to copy information onto the receiving computer.

# The Agilent 7250 Series Accurate-Mass Q-TOF and 8890 or 7890B GC

The Agilent 7250 Series Accurate-Mass Q-TOF is a stand-alone Quadrupole Time-of-Flight (Q-TOF) mass spectrometer for use with an Agilent 8890 or 7890B Gas Chromatograph.

A full library of reference material for your system is provided on the Agilent GC and GC/MS User Manuals and Tools DVD set. See **"Your Hardware Library"** on page 6 for how to install and access this wealth of information.



Flight tube

ALS

7250 Series Q-TOF

8890 GC

MS power switch

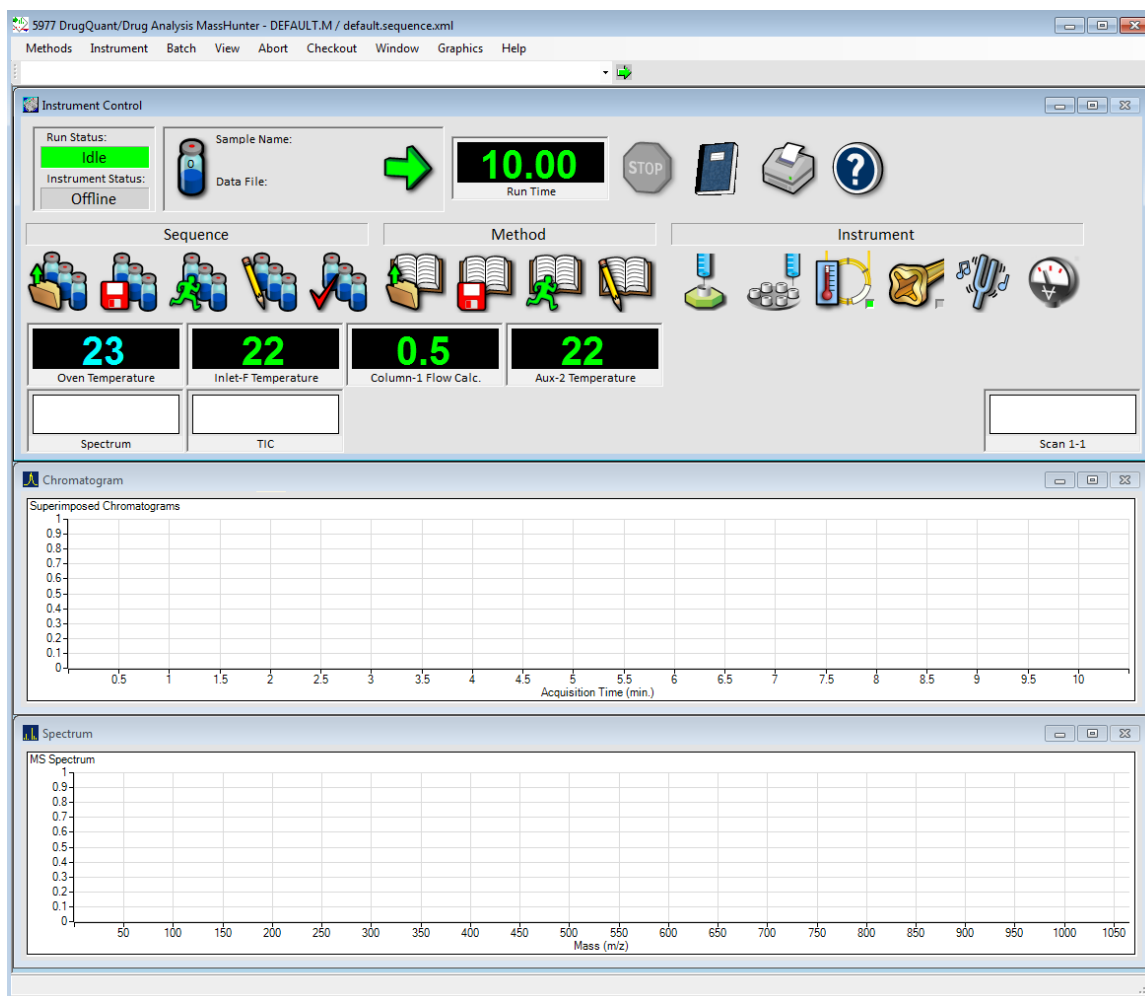
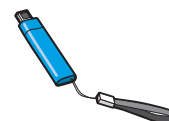
GC power switch

Drawer

# The Agilent MassHunter Workstation

The MassHunter Workstation provides dedicated software modules for quantitation, compound confirmation, target compound screening, degradant and unknown identification, characterization of biomolecules, and protein and metabolite identification.

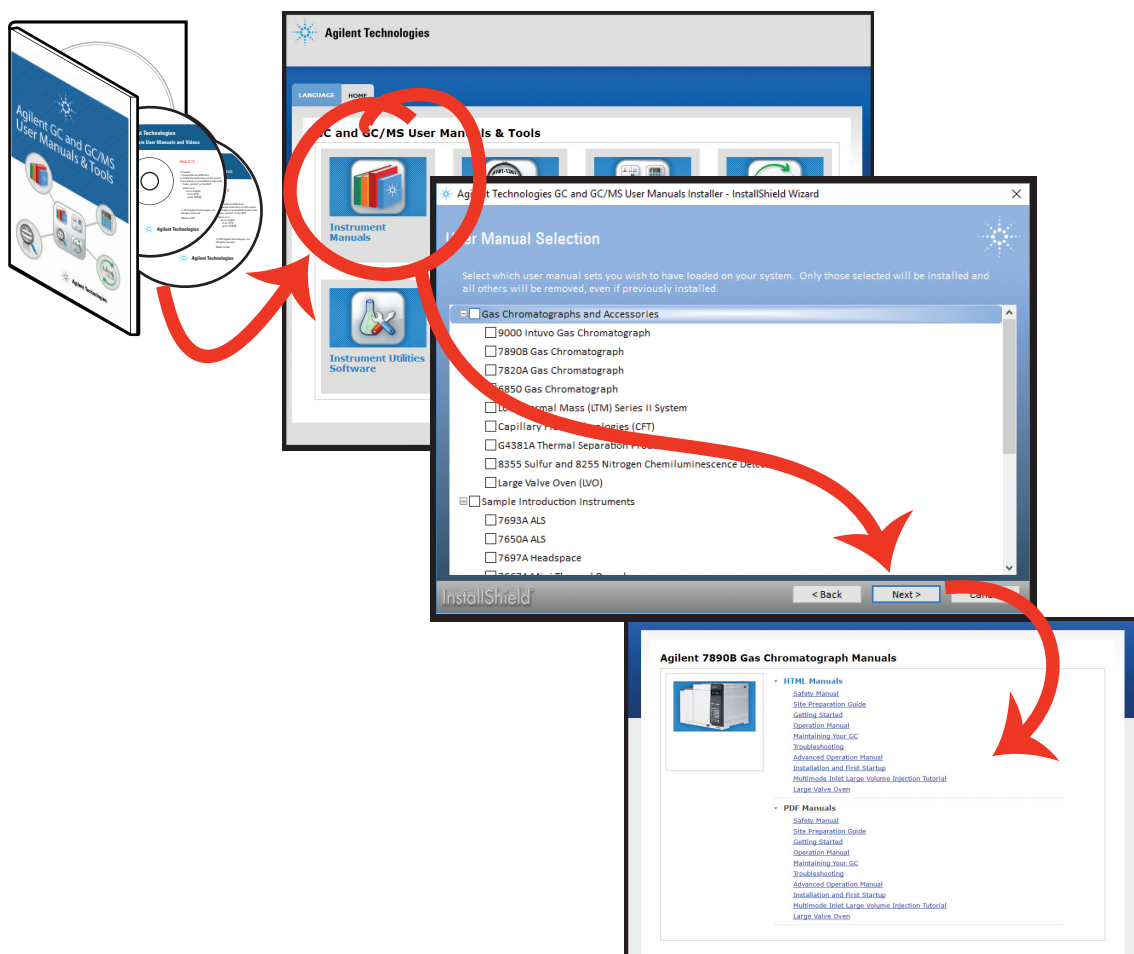
A full library of reference information for your MassHunter Workstation software is provided on the **Agilent GC/MS Software Information and Manuals** memory stick. See **"Your Software Library"** on page 8 for how to install and access this vast library.



# Your Hardware Library

Use the Agilent GC and GC/MS User Manuals and Tools DVD set to install the full library of Learning Products with manuals (in PDF format) and videos (in .wmv format) that explain how to install, operate, maintain, and troubleshoot your system. Also included are valuable user applications, method development tools, and an electronic **Parts Finder** tool which allows you to locate parts quickly by clicking on nested photos rather than thumbing through a paper catalog. (See **"Parts Finder Tool"** on page 7.)

Insert **Disk 1** into your DVD drive, and follow the system prompts to install these tools on your computer. Once installed, icons will be placed on your desktop for quick access to your material.



# Parts Finder Tool

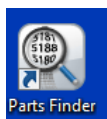
Included with your system is the **Agilent Parts Finder tool**. This interactive software features an intuitive image-based search capability for quick identification of needed parts and supplies for your Agilent instruments.

Using **Parts Finder**, rather than thumbing through a paper catalog, you can click on nested photos to quickly locate parts you need.



The **Parts Finder** tool is installed on your PC when you install MassHunter Workstation. It is also included with the Agilent GC and GC/MS User Manuals and Tools DVD set, and can be installed on any PC from there. (See **"Your Hardware Library"** on page 6.)

To open **Parts Finder**, click the **Parts Finder** desktop icon.



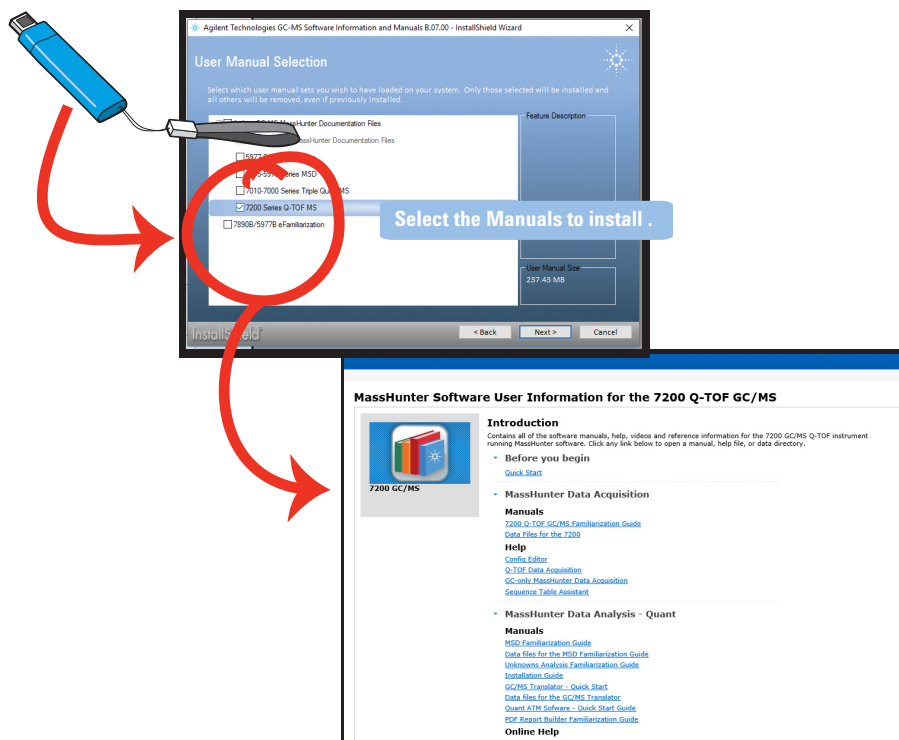
## Your Software Library

Use the **Agilent GC/MS Software Information and Manuals** memory stick (G1701-60176) to install the extensive library of software manuals, tutorials, online Help, videos, and more for your system.

Here you will find manuals, Help, videos, familiarization guides, and more for the:

- MassHunter 5975/5977 Series GC/MSD
- MassHunter 7000/7010 Series Triple Quad GC/MS
- MassHunter 7200 Accurate-Mass Q-TOF GC/MS System
- 8860/8890 GC System
- Intuvo 9000 GC System
- 7890 Series GC System
- MassHunter Data Acquisition and Data Analysis








Insert the memory stick into a USB port, and follow the system prompts to install these manuals on your computer. Once installed, icons will be placed on your desktop for quick access to your manuals.

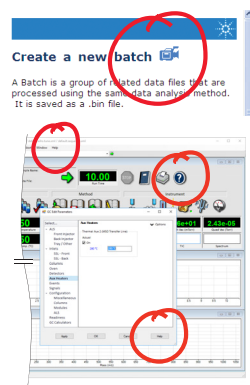
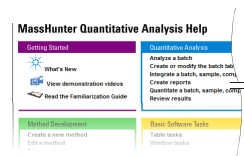




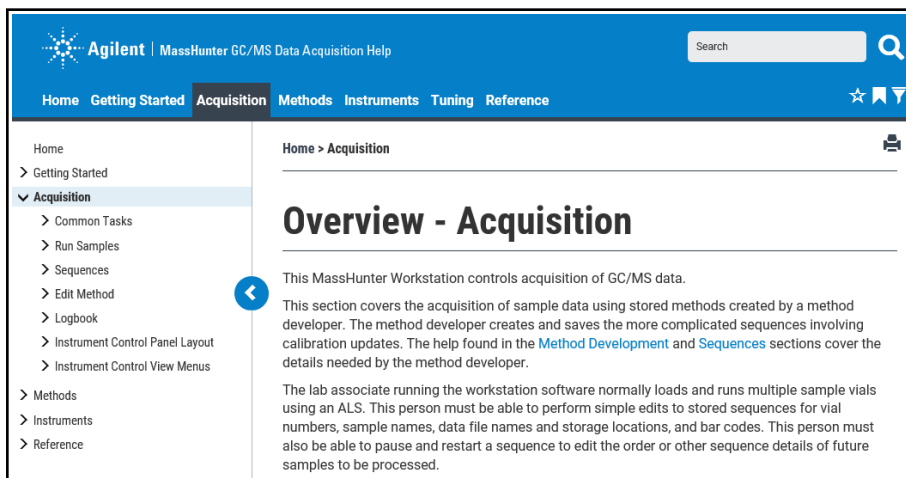
# Online Help

The online Help files contain extensive information and tutorials about instrument control, data acquisition, data analysis, methods, sequencing, tuning, troubleshooting, and how to use system commands and variables. In Help, the following features are available:

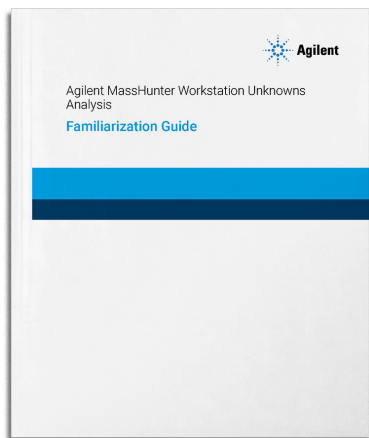
- Enter a search term, and click  **Search** to search the Help content.
- Click  **Set as favorite** to save the current topic to your favorites list.
- Click  **Favorites** to view the topics you have set as a favorite topic.
- Click  **Filter** to filter the Help content or search results based on your selection.
- Click  **Print** to print the current topic or save it as a PDF.
- Click  **Expand** or  **Minimize** to show or hide the Table of Contents.



Access online **Help** through the **Help** icon, the **Help** menu, **F1**, or the **Help** button on any dialog box.



# Familiarization Guides



There are several familiarization guides included on the GC/MS Software Information and Manuals memory stick, including:

- Getting Started
- Data Acquisition
- Quantitative Data Analysis
- Qualitative Data Analysis
- Unknowns Analysis
- Reporting

These and other manuals provide detailed step-by-step instructions on:

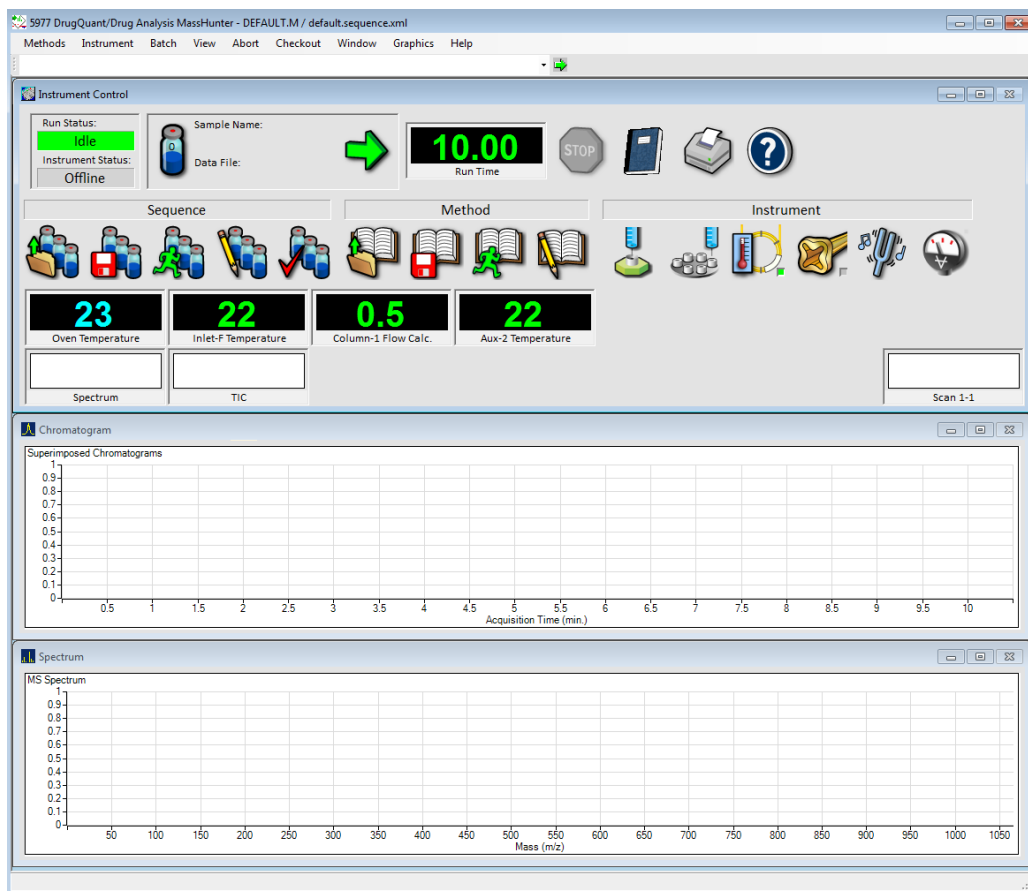
- How to prepare your system for data acquisition
- How to create acquisition methods, qualitative data analysis methods, and quantitative data analysis methods
- How to use the Unknowns Analysis software
- How to use the MassHunter reporting features

Once installed, you may access **Familiarization Guides** through the desktop icon, online **Help**, or the **Windows Start** menu.

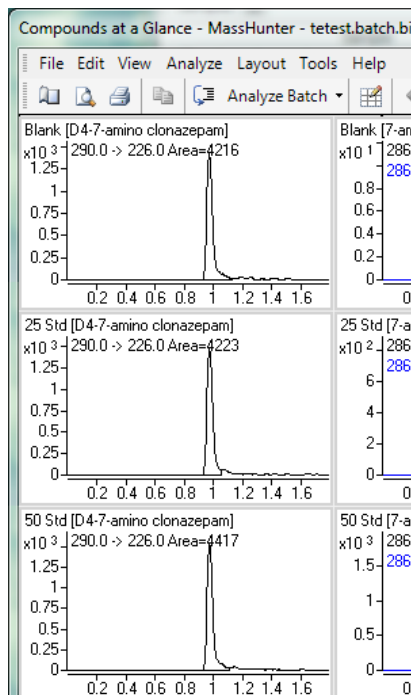
# Data Acquisition Software

With the MassHunter Data Acquisition software you can:

- Start and stop the instrument
- Download instrument settings in real time
- Load, edit, create, or run a method
- Load, edit, create, check, or run a sequence
- Evaluate the MS parameters
- Autotune the MS parameters
- Monitor the real-time conditions of the instrument parameters
- View the instrument logs
- View and print the real-time plot for chromatograms and instrument spectra
- Select and label the total ion chromatograms (TIC) or extracted ion chromatograms (EIC) that you want to appear in the real-time plot



# Quantitative Analysis Software



The MassHunter Quantitative Analysis software will quantify very low amounts of sample.

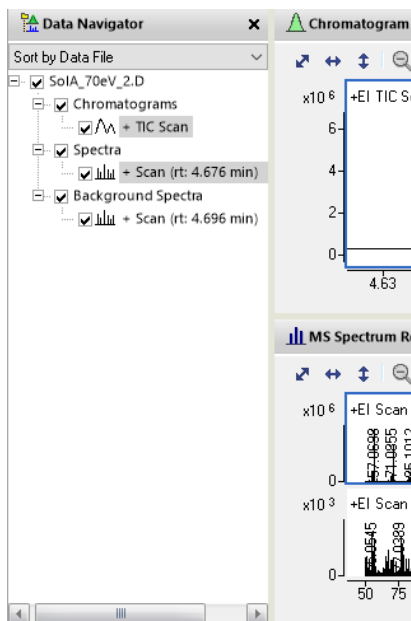
With the MassHunter Quantitative Analysis software you can:

- Import information directly from the acquisition method
- Use the curve-fit assistant to test all fits and statistics on the calibration curve quality
- Use the **Compounds at a Glance** feature to review all the chromatograms in your batch at once, side-by-side
- Quickly scan the batch table and see your quality metrics such as high outliers (in red) or low outliers (in blue)
- Press **F1** to access context sensitive online **Help**

Once installed, you may access **Familiarization Guides** for this software through the desktop icon, online **Help**, or the **Windows Start** menu.

7-amino c...											
7-amino clonazepam Results											
Exp. Conc.	RT	Resp.	MI	Calc. Conc.	Final Conc.	Accuracy	Ratio	MI	RT	Resp.	
25.0000	0.982	2400		29.0230	29.0230	116.1	79.1		0.974	4223	
50.0000	0.982	5192		48.6966	48.6966	97.4	79.2		0.974	4417	
125.0000	0.982	12941		111.0894	111.0894	88.9	85.4		0.973	4173	
250.0000	0.984	28338		227.0264	227.0264	90.8	82.6		0.977	4243	
500.0000	0.983	60068		534.1646	534.1646	106.8	74.5		0.975	3717	
									0.972	4216	
									0.976	4599	
189.0000	0.982	17646		145.8304	145.8304	77.2	75.8		0.974	4228	

# Qualitative Analysis Software



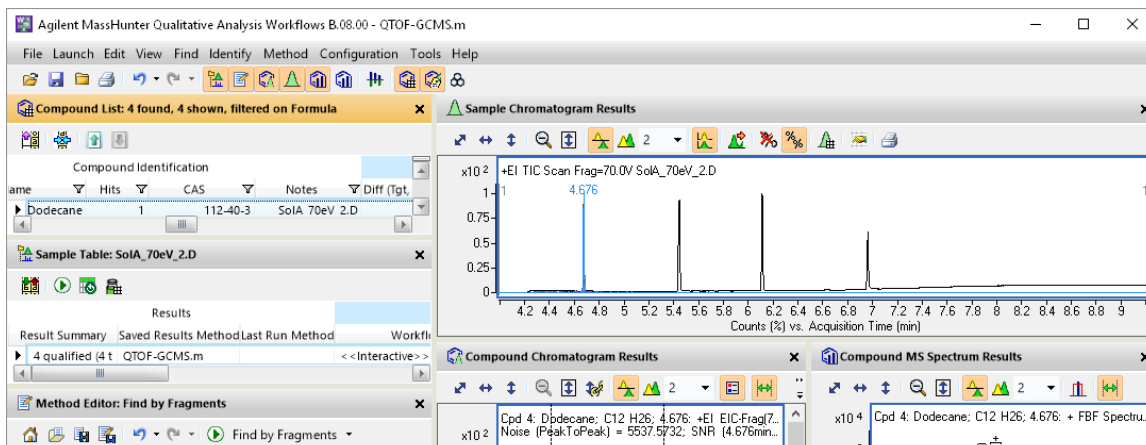
The MassHunter Qualitative Analysis software uses advanced data mining and processing tools, including integrated deconvolution algorithms, to rapidly and accurately find all detectable compounds in your samples and easily confirm targets or identify unknowns.

This software presents large amounts of data for review in one central location. With MassHunter Qualitative Analysis software you can:

- Extract chromatograms
- View and extract peak spectra
- Subtract background noise
- Integrate the chromatogram
- Find compounds and generate formulas
- Press **F1** to see context sensitive online **Help**

You can also set up methods to automatically do the tasks in the above list, as well as others, when you open the data files.

Once installed, you may access **Familiarization Guides** for this software through the desktop icon, online **Help**, or the **Windows Start** menu.



# Security Mode

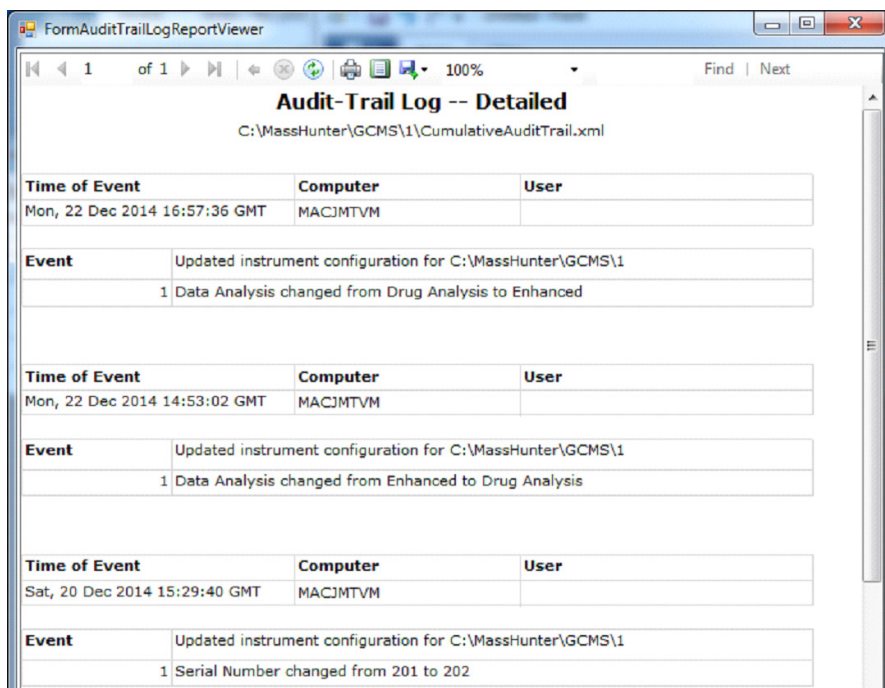
For a 7250 Series Q-TOF, both MassHunter Data Acquisition and MassHunter Quantitative Analysis Software can be installed in the **Standard Workflow**, or the **User Management and Audit Trail** security mode.

- In the **Standard Workflow** mode, all users have the same privileges, and data are saved to a designated drive. Records are not treated as regulated records.
- In the **User Management and Audit Trail** mode, similar to the Standard Workflow mode, records are not treated as regulated records. However, this mode includes four security user groups, each with its own set of privileges, plus a detailed audit trail that tracks all changes to method files, sequence files, data files, and the instrument configuration.

For details on the Security features, see the online **Help**.

For details on setting roles and responsibilities for security groups:

- For MassHunter Data Acquisition, see the **Configuration Editor's** online **Help**
- For MassHunter Quantitative Analysis, see the **Audit Trail Map's (ATM)** configuration window online **Help**



FormAuditTrailLogReportViewer

1 of 1 100% Find | Next

**Audit-Trail Log -- Detailed**  
C:\MassHunter\GCMS\1\CumulativeAuditTrail.xml

Time of Event	Computer	User
Mon, 22 Dec 2014 16:57:36 GMT	MACJMTVM	
<b>Event</b>	Updated instrument configuration for C:\MassHunter\GCMS\1	
	1 Data Analysis changed from Drug Analysis to Enhanced	

Time of Event	Computer	User
Mon, 22 Dec 2014 14:53:02 GMT	MACJMTVM	
<b>Event</b>	Updated instrument configuration for C:\MassHunter\GCMS\1	
	1 Data Analysis changed from Enhanced to Drug Analysis	

Time of Event	Computer	User
Sat, 20 Dec 2014 15:29:40 GMT	MACJMTVM	
<b>Event</b>	Updated instrument configuration for C:\MassHunter\GCMS\1	
	1 Serial Number changed from 201 to 202	

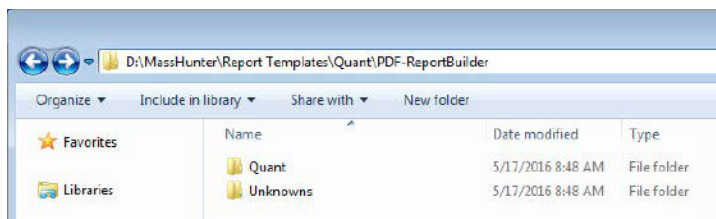
Once installed, you may access **Familiarization Guides** for this software through the desktop icon, online **Help**, or the **Windows Start** menu.

### Drag and drop columns from XML source



# Quantitative Analysis Report Builder

The Quantitative Analysis Report Builder software is installed with MassHunter Quantitative Analysis. The software provides PDF templates for Quantitative Analysis and Unknowns Analysis. Each of these templates can be customized for your specific application in the Report Builder.

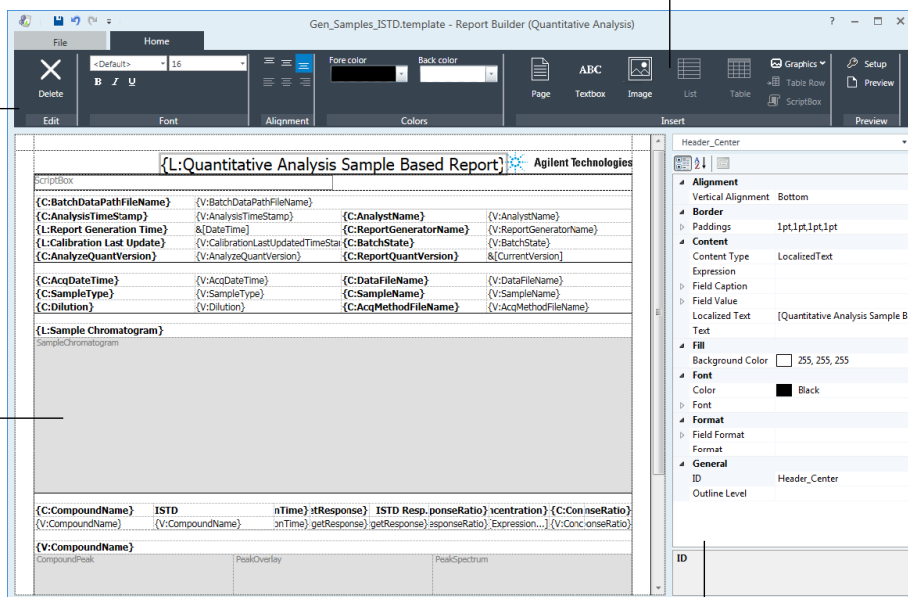


Add report elements using the Insert section.

Use the menu to modify text elements in the report.

Select a section in the editing window to customize that element.

Customize elements of the report in the Properties pane.





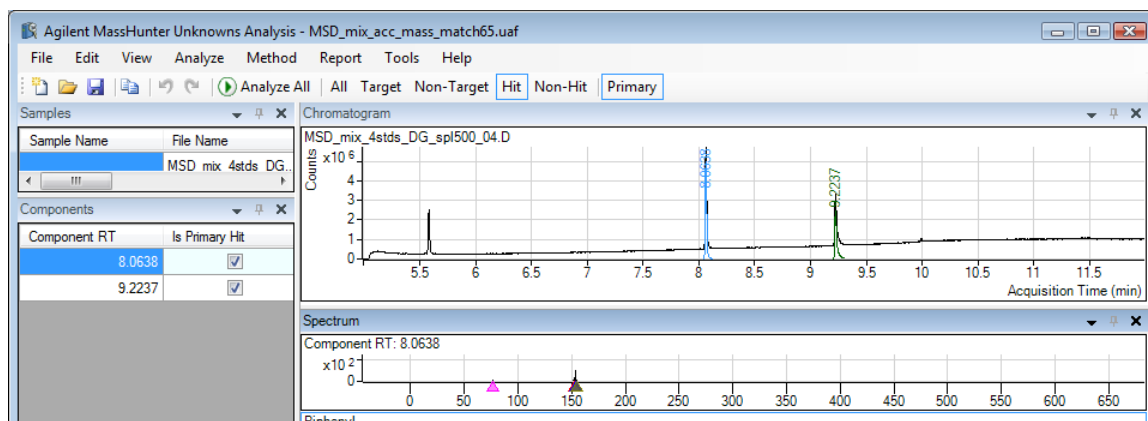
# Unknowns Analysis Software

The MassHunter Unknowns Analysis software identifies compounds that may be present in a sample batch beyond those that have been identified in the MassHunter Quantitative Analysis software.

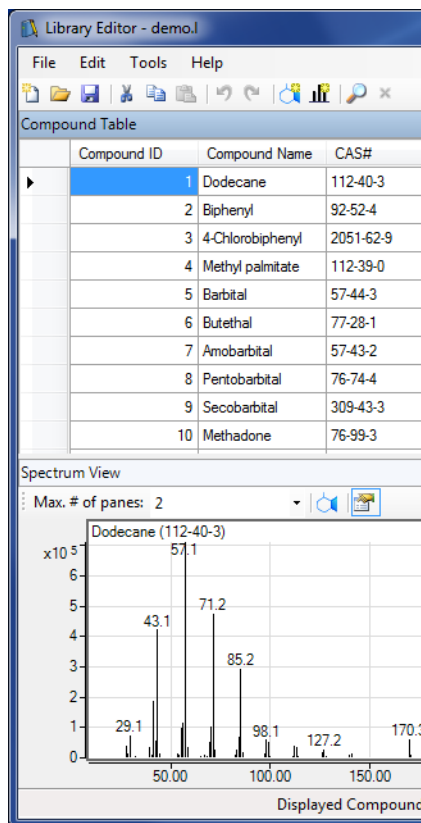
With the MassHunter Unknowns Analysis you can:

- Import data directly from the MassHunter Quantitative Analysis software
- Use optimized deconvolution and library match algorithms to identify target and non-target hits
- View chromatograms, component lists, spectrums, ion peaks, and molecular structures side-by-side
- Easily review library match and peak shape metrics of unknown components in table and spectrum formats

Once installed, you may access **Familiarization Guides** for this software through the desktop icon, online **Help**, or the **Windows Start** menu.



# Library Editor Software



The MassHunter Library Editor software customizes libraries used to identify compounds and components in the MassHunter Qualitative and Quantitative Data Analysis software.

With the MassHunter Library Editor you can:

- Add compounds to a library
- Copy spectral data from your data analysis software to a library
- Add a structure to your custom library
- Import JCAMP files into a custom library
- Create a reference pattern library

Once installed, you may access **Familiarization Guides** for this software through the desktop icon, online **Help**, or the **Windows Start** menu.

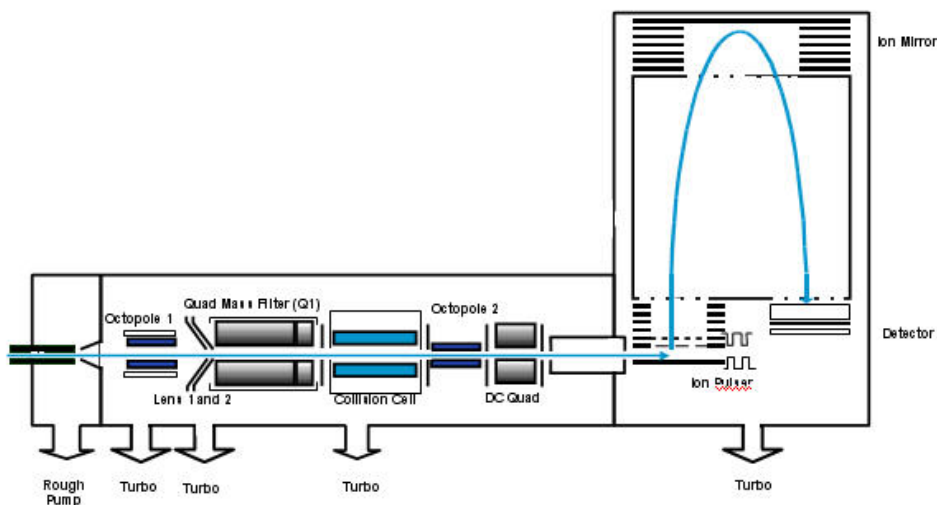
# Concepts Guide



To learn how your Agilent Accurate-Mass Q-TOF GC/MS system works in conjunction with the MassHunter software, take a look at the Concepts Guide. This document includes:

- Conceptual models
- Illustrations
- Screen captures
- An overview of how the Accurate-Mass Q-TOF works
- Concepts behind the design of the Agilent MassHunter Data Acquisition software
- The theory behind chemical ionization in GC/MS

Once installed, you may access this guide through the desktop icon, or the **Windows Start** menu.



# Operating Manual

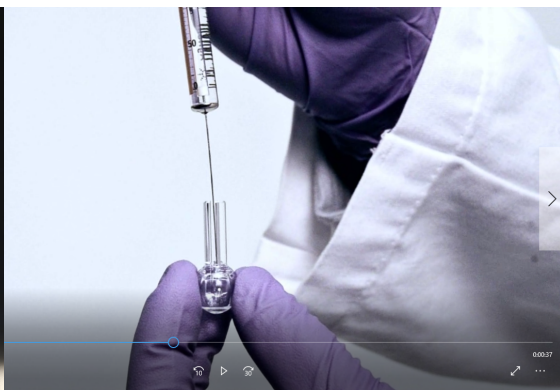
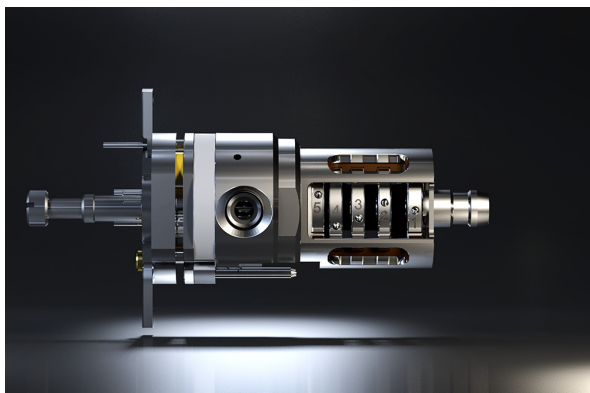


Your Agilent Accurate-Mass Q-TOF GC/MS system is extremely powerful and flexible. Refer to the Operating Manual for extensive information on operating the instrument and performing routine maintenance on it. Included are step-by-step instructions and videos on installing GC columns, operating in electron impact (EI) mode, general maintenance procedures, and more.

Once installed, you may access this guide through the desktop icon, or the **Windows Start** menu.



Any topic with the camera icon is linked to a video. Watch these videos to learn more.



# Troubleshooting and Maintenance Manual



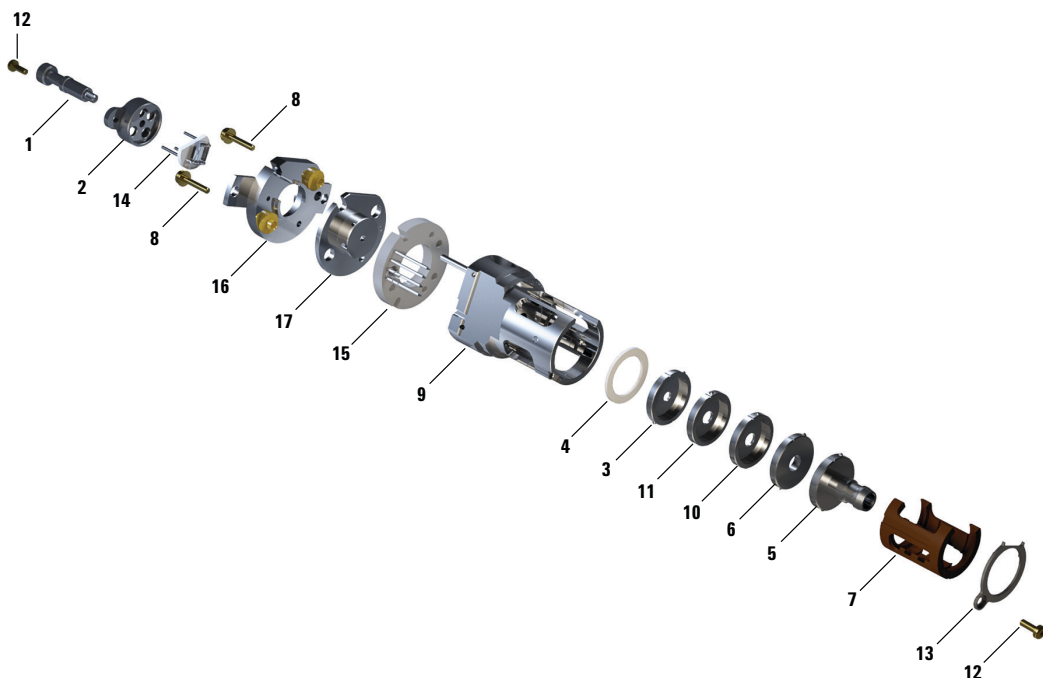
The Agilent Accurate-Mass Q-TOF GC/MS system consists of an Agilent 7250 Series Q-TOF and an 8890 or 7890 Gas Chromatograph (GC).

The Troubleshooting and Maintenance Manual for your system includes step-by-step instructions along with videos, IPBs, and annotated high-resolution photos to help you identify the cause of problems in your system. Also included are detailed procedures for completing common maintenance tasks, information about the components of the GC/MS vacuum and analyzer systems, and a listing of parts.

Once installed, you may access this guide through the desktop icon, or the **Windows Start** menu.



Any topic with the camera icon is linked to a video. Watch these videos to learn more.



**www.agilent.com**

© Agilent Technologies, Inc. 2019

First Edition, January 2019



G7250-90014





