

Labware MiniHub Unpacking Guide

This guide describes how to unpack and repack the Agilent Labware MiniHub. The Labware MiniHub is shipped in one large box.

Before you start

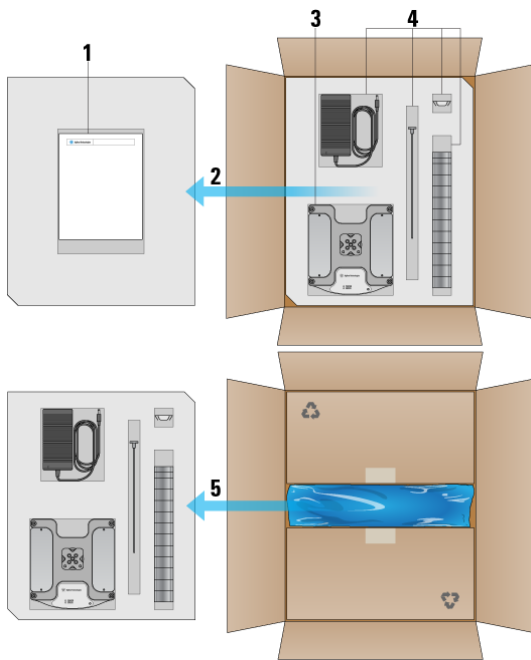
Move the shipping box to the area where you will be installing the device. Leave the box on the ground to facilitate the unpacking process.

WARNING The Labware MiniHub shipping box weighs 11.3 kg (25 lb). Use proper techniques when lifting the box.

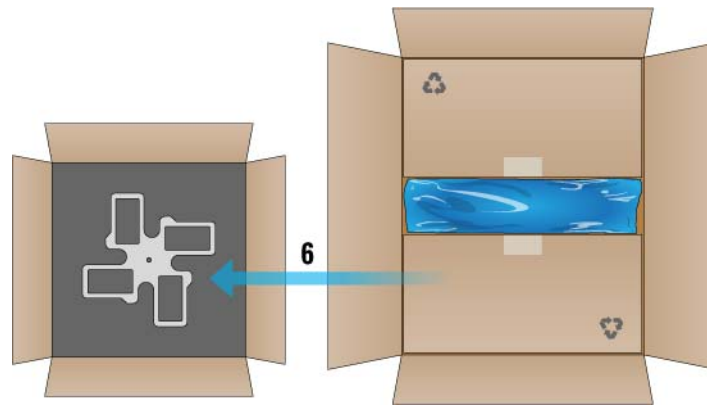
Unpacking the shipping box

IMPORTANT Save the packaging materials in case you need to move or ship the Labware MiniHub.

To unpack the Labware MiniHub:



- 1 Open the box and remove the Declaration of Incorporation.
- 2 Remove the foam block.
- 3 Carefully lift the Labware MiniHub base out of the box.
- 4 Remove the cassette cap, the spacers, the rod, and the power adapter.
- 5 Remove the foam block.
- 6 Open the two boxes and remove the shelves. They are stacked with foam inserts.



Inspecting the contents

Inspect all items for completeness and potential shipping damage. If an item is defective on arrival, contact the Automation Solutions Business Center as soon as possible.

- In North America, call 1.800.227.9770.
- For other locations, contact your region's Agilent Technologies office:
<http://www.chem.agilent.com/en-US/ContactUS/Pages/ContactUs.aspx>.

After you unpack the shipping boxes, make sure you have the following:

Part name	Part number
Document of Incorporation	G5471-90003
Labware MiniHub, one of the following:	
• System model (G5471A with 16 shelves)	G5508-60009
• BenchBot model (G5489A with 13 shelves)	G5508-60031
• BenchCel model (G5472A with 10 shelves)	G5508-60010
Spacers:	
• 25.1 mm (17 for the system model, 14 for the BenchBot model, and 11 for the BenchCel model)	G5508-20014
• 8.4 mm (3)	G5508-20015

Part name	Part number
Rod, one of the following:	
• System model	G5508-20012
• BenchBot model	G5508-20016
• BenchCel model	G5508-20013
Black knob	G5500-20136
Cassette cap	G5508-00010
Power supply	0950-5725
The following parts are required for installation, but shipped separately:	
• Power supply power cable	Varies by country
• Ethernet cable	G5550-09002
• Serial adapter	G5550-21721
• USB to serial adapter (for laptop without a serial connector)	G5550-12206

About installation, setup, and operation

For safety information, laboratory setup requirements, and installation instructions, see the [Labware MiniHub Safety and Installation Guide](#).

For software setup and operating instructions, see the [Labware MiniHub User Guide](#) that is available as online help or PDF file on the software CD.

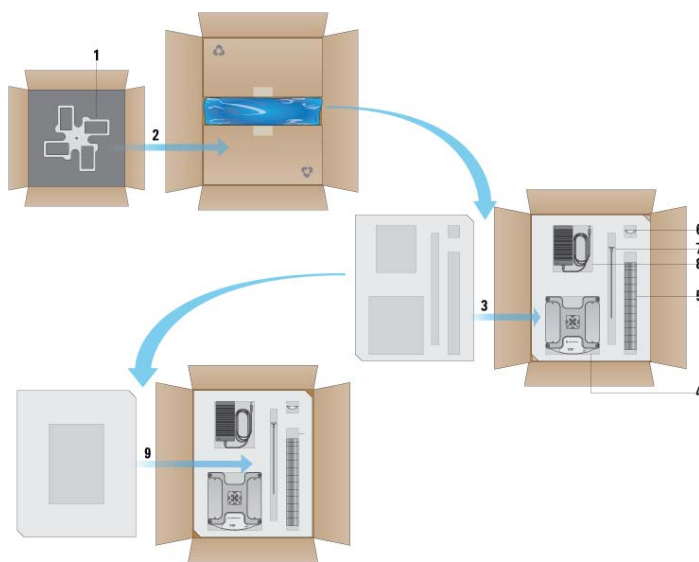
Packing for storage and transport

If you need to remove the Labware MiniHub from the attachment surface and pack it for storage or transport, follow the instructions in this section.

To pack the Labware MiniHub:

- 1 Disassemble the Labware MiniHub. Refer to the [Labware MiniHub Safety and Installation Guide](#) for instructions.
- 2 Place the shelves in their foam cutouts, stack them in their shipping boxes, and close them.
- 3 Leaving the main shipping box on the ground, place the boxes of shelves in the main shipping box. Place the packing material between the boxes to prevent them from sliding.
- 4 Place the foam cutout on top of the boxes of shelves.
- 5 Carefully place the Labware MiniHub base in its foam cutout. Make sure it is seated securely.
- 6 Stack the spacers and place them in their foam cutouts.
- 7 Insert the cassette cap into the available space in one of the spacer foam-cutouts.
- 8 Place the rod and black knob assembly in its cutout in the foam.
- 9 Place the power adapter in its cutout in the foam.

- 10 Place the remaining foam block on top of the box contents and close the box.



Accessing product user documentation

Agilent Technologies product user documentation is available in the following locations:

- *Online help.* The product knowledge base is available from the Help menu within the automation control software.
- *PDF files.* Product manuals are provided as PDF files on the product software CD.
- *Agilent Technologies website.* You can search the Automation Solutions product knowledge base or download the latest version of any PDF file at www.agilent.com/chem/askb.

Contacting Agilent Technologies

Business Center: 1.800.227.9770
(for missing or damaged components)

Technical Support: 1.800.979.4811 (US only) or
+1.408.345.8011 (rest of the world)
service.automation@agilent.com

Customer Service: 1.866.428.9811 or +1.408.345.8356
customerservice.automation@agilent.com

European Service: +44 (0)8457125292
euroservice.automation@agilent.com

Documentation feedback:
documentation.automation@agilent.com

Web: www.agilent.com/lifesciences/automation