



Tecan Infinite

Device Driver Quick Reference

Original Instructions

Notices

© Agilent Technologies, Inc. 2012

No part of this manual may be reproduced in any form or by any means (including electronic storage and retrieval or translation into a foreign language) without prior agreement and written consent from Agilent Technologies, Inc. as governed by United States and international copyright laws.

User Guide Part Number

G5415-90008

Edition

Revision 00, December 2012

Contact Information

Agilent Technologies Inc.
Automation Solutions
5301 Stevens Creek Blvd.
Santa Clara, CA 95051
USA

Technical Support: 1.800.979.4811
or +1.408.345.8011
service.automation@agilent.com

Customer Service: 1.866.428.9811
or +1.408.345.8356
orders.automation@agilent.com

European Service: +44 (0) 845 712 5292
euroservice.automation@agilent.com

Documentation feedback:
documentation.automation@agilent.com

Web:
www.agilent.com/lifesciences/automation

Acknowledgements

Microsoft® and Windows® are either registered trademarks or trademarks of the Microsoft Corporation in the United States and other countries.

Warranty

The material contained in this document is provided “as is,” and is subject to being changed, without notice, in future editions. Further, to the maximum extent permitted by applicable law, Agilent disclaims all warranties, either express or implied, with regard to this manual and any information contained herein, including but not limited to the implied warranties of merchantability and fitness for a particular purpose. Agilent shall not be liable for errors or for incidental or consequential damages in connection with the furnishing, use, or performance of this document or of any information contained herein. Should Agilent and the user have a separate written agreement with warranty terms covering the material in this document that conflict with these terms, the warranty terms in the separate agreement shall control.

Technology Licenses


The hardware and/or software described in this document are furnished under a license and may be used or copied only in accordance with the terms of such license.

Restricted Rights Legend

If software is for use in the performance of a U.S. Government prime contract or sub-contract, Software is delivered and licensed as “Commercial computer software” as defined in DFAR 252.227-7014 (June 1995), or as a “commercial item” as defined in FAR 2.101(a) or as “Restricted computer software” as defined in FAR 52.227-19 (June 1987) or any equivalent agency regulation or contract clause. Use, duplication or disclosure of Software is subject to Agilent Technologies’ standard commercial license terms, and non-DOD Departments and Agencies of the U.S. Government will receive no greater than Restricted Rights as defined in FAR 52.227-19(c)(1-2) (June 1987). U.S. Government users will receive no greater than Limited Rights as defined in FAR 52.227-14

(June 1987) or DFAR 252.227-7015 (b)(2) (November 1995), as applicable in any technical data.

Safety Notices

 **A WARNING notice denotes a hazard. It calls attention to an operating procedure, practice, or the like that, if not correctly performed or adhered to, could result in personal injury or death. Do not proceed beyond a WARNING notice until the indicated conditions are fully understood and met.**

A CAUTION notice denotes a hazard. It calls attention to an operating procedure, practice, or the like that, if not correctly performed or adhered to, could result in damage to the product or loss of important data. Do not proceed beyond a CAUTION notice until the indicated conditions are fully understood and met.

Tecan Infinite Device Driver Quick Reference

This document contains the following topics:

- [About this document](#)
- [Tecan Infinite Reader Diagnostics](#)
- [Infinite Reader protocol task](#)

About this document

What this guide covers

The Tecan Infinite is a series of microplate reader models that can be integrated into a lab automation system that is controlled by the VWorks software.

This document provides a quick reference of the commands, selections, and parameters in the following:

- [Tecan Infinite Reader Diagnostics](#)
- [Infinite Reader protocol task](#)

Assumptions

This document assumes that you are familiar with the VWorks software and that you know how to:

- Add a device to a device file.
- Open the device diagnostics software.
- Create and manage profiles.
- Create a protocol and add protocol tasks.

Software version

This document describes the functions that are available in the following software:

- VWorks Automation Control 11.4 or later
- Tecan i-control 1.9 or later

The Tecan i-control software controls the Infinite readers and must be installed on the controlling computer that is running the VWorks software.

Related documents

Use this document in conjunction with the following:

- [VWorks Automation Control Setup Guide](#)
- [VWorks Automation Control User Guide](#)
- Lab automation system user guide, such as the [BioCel System User Guide](#)
- User documentation for the Tecan Infinite reader and i-control software

For user information about other Automation Solutions products, you can search the product knowledge base or download the latest version of a PDF file from the Agilent Technologies website at:

www.agilent.com/chem/askb.

Tecan Infinite Reader Diagnostics

About Tecan Infinite Reader Diagnostics

You use Tecan Infinite Reader Diagnostics to:

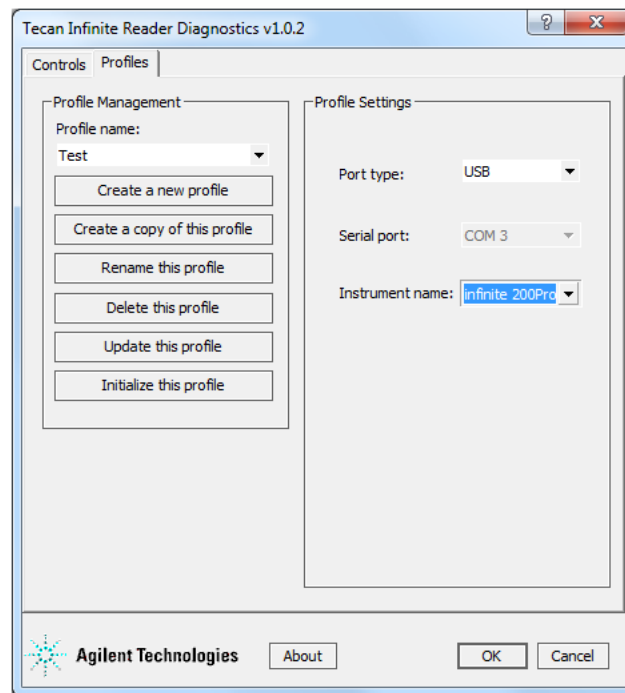
- *Create and manage profiles.* A profile allows you to set up communication between the Infinite Reader and the controlling computer.
- *Read a microplate.* Using the available commands, you can select a measurement file and start reading a microplate.

This topic provides a quick reference of the commands, selections, and parameters in the following Tecan Infinite Reader Diagnostics tabs:

- [Profiles tab](#)
- [Controls tab](#)

For instructions on adding the Infinite Reader device to your device file and opening Tecan Infinite Reader Diagnostics, see the lab automation system user guide, such as the *BioCel System User Guide*.

Profiles tab



Profile Management area

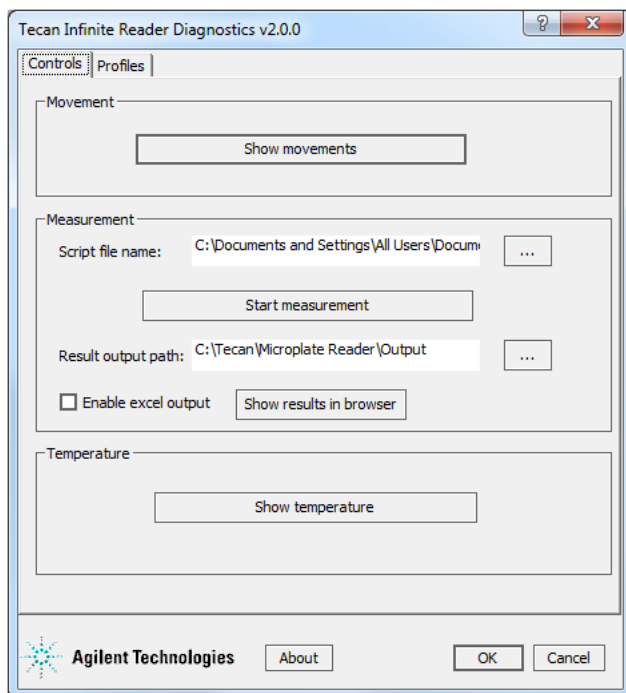
| Command | Description |
|----------------------|---|
| Profile name | Displays the selected profile. Also allows you to select from the list of available profiles. |
| Create a new profile | Creates a new profile. |

| Command | Description |
|-------------------------------|---|
| Create a copy of this profile | Creates a duplicate copy of the selected profile. |
| Rename this profile | Renames the selected profile. |
| Delete this profile | Deletes the selected profile. |
| Update this profile | Saves changes to the selected profile. |
| Initialize this profile | Initiates communication with the device using the selected profile. |

Profile Settings area

| Setting or option | Description |
|-------------------|---|
| Port type | The type of communication port that connects the Infinite reader to the controlling computer. Select one of the following: <ul style="list-style-type: none">• USB• Serial |
| Serial port | The COM port that is used for the serial communication. This field is only available if you selected Serial for the Port type . |
| Instrument name | The model of the Infinite reader. Select one of the following: <ul style="list-style-type: none">• Infinite 200• Infinite 500• Infinite 1000• Infinite 200Pro |

Controls tab



Movement area

| Command | Description |
|----------------|--|
| Show movements | Displays the Tecan i-control software dialog box that allows you to move components of the reader. For example, you can use commands in the i-control software to move the microplate into or out of the reader. For more information about the available commands in the i-control software, see the i-control user documentation. |

Measurement area

| Selection or command | Description |
|----------------------|--|
| Script file name | The location and name of the measurement file that you want to use when reading a microplate. Click the browse button to locate and select the measurement file. <i>Note:</i> The measurement files are created in the i-control software. For instructions on how to create the files, see the i-control software user documentation. |
| Start Measurement | The command to start the microplate reading process on the Infinite Reader. |

| Selection or command | Description |
|---------------------------|---|
| Result output path | The folder where the result files will be saved. Click the browse button to select a location. |
| Enable Excel output | The option to save the results as an Excel file. |
| Show results in a browser | The command to display the results in a web browser software. |

Temperature area

| Command | Description |
|------------------|---|
| Show temperature | Displays the Tecan i-control software dialog box that allows you to monitor and control the temperature inside the Infinite reader. For instructions, see the i-control user documentation. |


Infinite Reader protocol task

About the task

You can add the Measure task to read microplates in the Infinite reader:
The Measure task is associated with the Infinite reader only. This topic describes the device-specific task.

Start Measurement

Description

The Measure ( Measure (Tecan Infinite Reader)) task starts the microplate reading process in the Infinite reader.

When the protocol run reaches the Measure task, the stage in the Infinite reader will automatically move out to receive the microplate, and then move in to prepare the microplate for the reading process.

Note: The Measure task is only available in the Main Protocol.

Task parameters

| Parameter | Description |
|------------------------------|--|
| Measurement script file | The measurement file to use when reading a microplate. Click the browse button to locate and select the desire measurement file. The measurement files are created in the i-control software. For instructions on how to create the files, see the i-control software user documentation. |
| Result output folder | The folder where the result files will be saved. Click the browse button to select a location. |
| Enable Excel output | The option to save the results as an Excel file. |
| Task number | The number that indicates the position of the task in the protocol. |
| Task description | The description of the task. |
| Use default task description | The option to use the default task description or provide your own description for the task. Select the check box to use the default description. Clear the check box to provide your own description. |



Quick Reference

G5415-90008

Revision 00, December 2012