



QUANTIFOIL

Instruments BioShake

Device Driver

Quick Reference

Original Instructions

Notices

© Agilent Technologies, Inc. 2012

No part of this manual may be reproduced in any form or by any means (including electronic storage and retrieval or translation into a foreign language) without prior agreement and written consent from Agilent Technologies, Inc. as governed by United States and international copyright laws.

User Guide Part Number

G5415-90006

Edition

Revision 00, December 2012

Contact Information

Agilent Technologies Inc.
Automation Solutions
5301 Stevens Creek Blvd.
Santa Clara, CA 95051
USA

Technical Support: 1.800.979.4811
or +1.408.345.8011
service.automation@agilent.com

Customer Service: 1.866.428.9811
or +1.408.345.8356
orders.automation@agilent.com

European Service: +44 (0) 845 712 5292
euroservice.automation@agilent.com

Documentation feedback:
documentation.automation@agilent.com

Web:
www.agilent.com/lifesciences/automation

Acknowledgements

Microsoft® and Windows® are either registered trademarks or trademarks of the Microsoft Corporation in the United States and other countries.

Warranty

The material contained in this document is provided “as is,” and is subject to being changed, without notice, in future editions. Further, to the maximum extent permitted by applicable law, Agilent disclaims all warranties, either express or implied, with regard to this manual and any information contained herein, including but not limited to the implied warranties of merchantability and fitness for a particular purpose. Agilent shall not be liable for errors or for incidental or consequential damages in connection with the furnishing, use, or performance of this document or of any information contained herein. Should Agilent and the user have a separate written agreement with warranty terms covering the material in this document that conflict with these terms, the warranty terms in the separate agreement shall control.

Technology Licenses


The hardware and/or software described in this document are furnished under a license and may be used or copied only in accordance with the terms of such license.

Restricted Rights Legend

If software is for use in the performance of a U.S. Government prime contract or sub-contract, Software is delivered and licensed as “Commercial computer software” as defined in DFAR 252.227-7014 (June 1995), or as a “commercial item” as defined in FAR 2.101(a) or as “Restricted computer software” as defined in FAR 52.227-19 (June 1987) or any equivalent agency regulation or contract clause. Use, duplication or disclosure of Software is subject to Agilent Technologies’ standard commercial license terms, and non-DOD Departments and Agencies of the U.S. Government will receive no greater than Restricted Rights as defined in FAR 52.227-19(c)(1-2) (June 1987). U.S. Government users will receive no greater than Limited Rights as defined in FAR 52.227-14

(June 1987) or DFAR 252.227-7015 (b)(2) (November 1995), as applicable in any technical data.

Safety Notices

 **A WARNING notice denotes a hazard. It calls attention to an operating procedure, practice, or the like that, if not correctly performed or adhered to, could result in personal injury or death. Do not proceed beyond a WARNING notice until the indicated conditions are fully understood and met.**

A CAUTION notice denotes a hazard. It calls attention to an operating procedure, practice, or the like that, if not correctly performed or adhered to, could result in damage to the product or loss of important data. Do not proceed beyond a CAUTION notice until the indicated conditions are fully understood and met.

QUANTIFOIL Instruments BioShake Device Driver Quick Reference

This document contains the following topics:

- [About this document](#)
- [Q Instruments BioShaker Diagnostics](#)
- [Q Instruments BioShake protocol tasks](#)

About this document

What this guide covers

The QUANTIFOIL Instruments BioShake (or the Q Instruments BioShake) is a shaker or thermoshaker for microplates, tubes and vials that can be integrated into a lab automation system that is controlled by the VWorks software.

This document provides a quick reference of the commands, selections, and parameters in the following:

- [Q Instruments BioShaker Diagnostics](#)
- [Q Instruments BioShake protocol tasks](#)

Assumptions

This document assumes that you are familiar with the VWorks software and that you know how to:

- Add a device to a device file.
- Open the device diagnostics software.
- Create and manage profiles.
- Create a protocol and add protocol tasks.

Software version

The functions described in this document are available in the following software VWorks Automation Control 11.4 or later.

Related documents

Use this document in conjunction with the following:

- [VWorks Automation Control Setup Guide](#)
- [VWorks Automation Control User Guide](#)
- Lab automation system user guide, such as the [BioCel System User Guide](#)
- User documentation for the Q Instruments BioShake device

For user information about other Automation Solutions products, you can search the product knowledge base or download the latest version of a PDF file from the Agilent Technologies website at:

www.agilent.com/chem/askb.

Q Instruments BioShake Diagnostics

About Q Instruments BioShake Diagnostics

You use Q Instruments BioShake Diagnostics to:

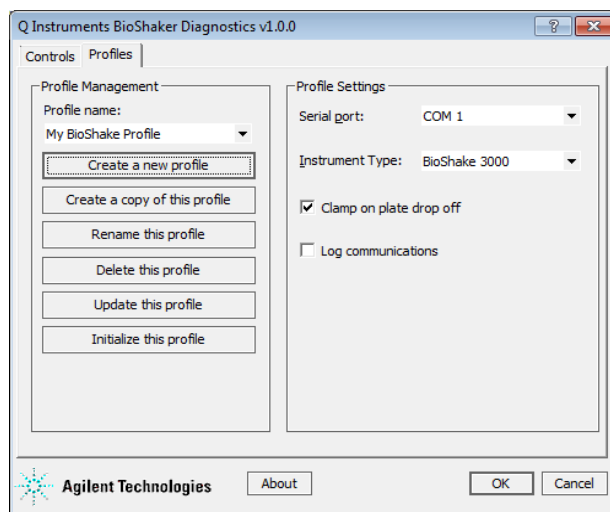
- *Create and manage profiles.* A profile allows you to set up communication between the BioShake and the controlling computer.
- *Shake the labware.* Using the available commands, you can set the temperature and speed. You can also clamp, declamp, start shaking, or stop shaking the labware.

This topic provides a quick reference of the commands, selections, and parameters in the following Q Instruments BioShake Diagnostics tabs:

- [Profiles tab](#)
- [Controls tab](#)

For instructions on adding the BioShake device to your device file and opening Q Instruments BioShake Diagnostics, see the lab automation system user guide, such as the *BioCel System User Guide*.

Profiles tab



Profile Management area

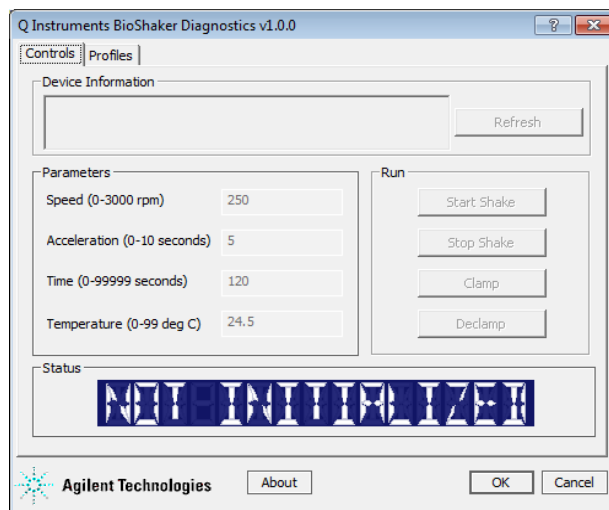
Command	Description
Profile name	Displays the selected profile. Also allows you to select from the list of available profiles.
Create a new profile	Creates a new profile.
Create a copy of this profile	Creates a duplicate copy of the selected profile.
Rename this profile	Renames the selected profile.

Command	Description
Delete this profile	Deletes the selected profile.
Update this profile	Saves changes to the selected profile.
Initialize this profile	Initiates communication with the device using the selected profile.

Profile Settings

Setting or option	Description
Serial port	The controlling computer COM port that is connected to the BioShake device.
Instrument type	The BioShake model name. Select one of the following: <ul style="list-style-type: none"> • BioShake 3000 • BioShake 3000 elm • BioShake 5000 elm • BioShake 3000-T • BioShake 3000-T elm
Clamp on plate drop off	The option to have the BioShake grip the labware as soon as the labware is placed on the BioShake device. When the labware is ready to move to another location for the next task, the BioShake device will automatically declamp (remove the grip from) the labware. Select the check box if you want to automatically clamp and declamp the labware.
Log Communications	The option to record all communication between the BioShake device and the computer.

Controls tab



Note: Speed, Temperature, Clamp, and Declamp only display for certain BioShake models.

Device Information area

Information or command	Description
Device information box	Displays the BioShake device's version number and model name.
Refresh	Updates the text in the Device Information area.

Parameters area

Parameter	Description
Speed	The speed, in rpm, at which to shake the labware.
Acceleration	The rate, in seconds, at which the BioShake device will reach the specified speed. The valid range is 1–10 s.
Time	The length of time, in seconds, to shake the labware.
Temperature	The temperature, in Centigrade, at which to shake the labware.

Run area

Command	Description
Start Shake	Starts shaking the labware.
Stop Shake	Stops shaking the labware.

Command	Description
Clamp	Grips the labware so that it is ready for shaking.
Declamp	Releases the labware.

Status area

Displays the BioShake device's current state.

Q Instruments BioShake protocol tasks

About the tasks


You can add the following protocol tasks for the BioShake device:

- [Clamp](#)
- [Declamp](#)
- [Start Shaker](#)
- [Stop Shaker](#)

The tasks are associated with the BioShake device only. This topic describes these device-specific tasks.

Clamp

Description


The Clamp ( [Clamp Plate \(Q Instruments BioShaker\)](#)) task grips the labware that is placed on the BioShake stage so that it is ready for shaking.

Task parameters

The Clamp task does not have task parameters.

Declamp

Description


The Declamp ( [Declamp Plate \(Q Instruments BioShaker\)](#)) task, releases the labware that is on the BioShake stage so that it can move to another location for the next task.

Task parameters

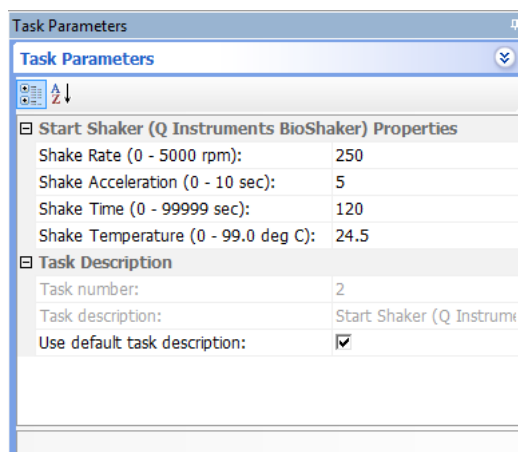
The Declamp tasks does not have task parameters.

Start Shaker

Description

The Start Shaker ( [Start Shaker \(Q Instruments BioShaker\)](#)) task shakes the labware that is placed on the BioShake stage.


Task parameters



Parameter	Description
Shake Rate	The speed, in rpm, at which to shake the labware.
Shake Acceleration	The rate, in seconds, at which the BioShake device will reach the specified speed. The valid range is 1–10 s.
Shake Time	The length of time, in seconds, to shake the labware.
Shake Temperature	The temperature, in Centigrade, at which to shake the labware.
Task number	The number that indicates the position of the task in the protocol.
Task description	The description of the task.
Use default task description	The option to use the default task description or provide your own description for the task. Select the check box to use the default description. Clear the check box to provide your own description.

Stop Shaker

Description

The Stop Shaker ( Stop Shaker (Q Instruments BioShaker)) task stops shaking the labware that is on the BioShake stage.

Task parameters

The Stop Shaker task does not have any parameters.



Quick Reference

G5415-90006

Revision 00, December 2012