

Microplate Centrifuge with Loader Unpacking Guide

Before you start

Move the shipping box to the area where the device will be installed. Make sure two people are available to unpack the device.

WARNING The fully packed Microplate Centrifuge with Loader weighs approximately 40 kg (88.2 lb). Attempting to move the device without assistance could cause personal injury. Request assistance and use proper lifting techniques when lifting the device.

Ensure that you have scissors, an 11-mm open wrench, a flathead screwdriver, and a 3-mm hex wrench.

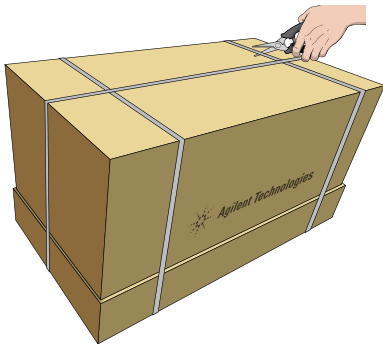
Unpacking the shipping box

IMPORTANT Save the packaging materials in case you need to move or ship the device.

To unpack the Microplate Centrifuge with Loader:

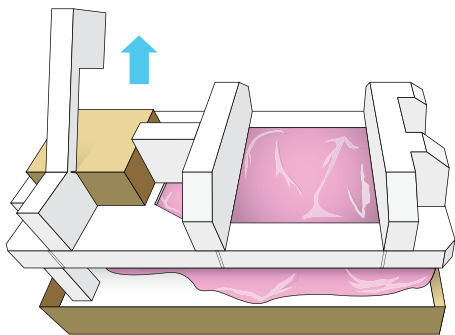
1 Cut the straps that secure the shipping box.

WARNING The strap will spring back with force when cut. To avoid potential injury, stay clear of the sides of the shipping box when cutting the packing strap.



2 Lift the top cardboard cover off of the box.

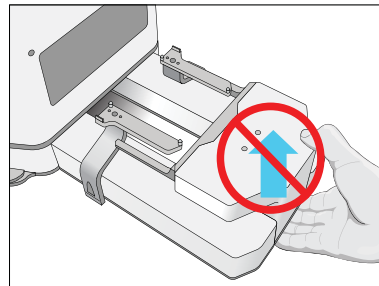
3 Lift the foam hinge that rests atop the small box. Remove the small box, and set it aside temporarily.



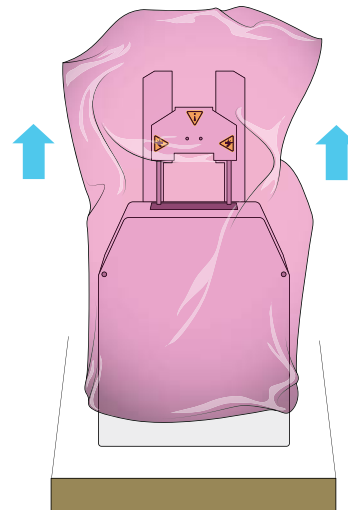
4 Remove the top foam packing insert from the device.

5 Remove the Important Documents envelope from the plastic bag, and set it aside temporarily.

CAUTION Do not use the front end of the Loader as a lift point. Using the Loader to lift the device can damage the baseplate, which is easily bent.



6 While the device is still resting on the packing foam, carefully tilt the device up vertically so that the rear end remains on the foam and the closed end of the bag is facing up. While supporting the device to prevent it from falling, lift the plastic bag off of the device.



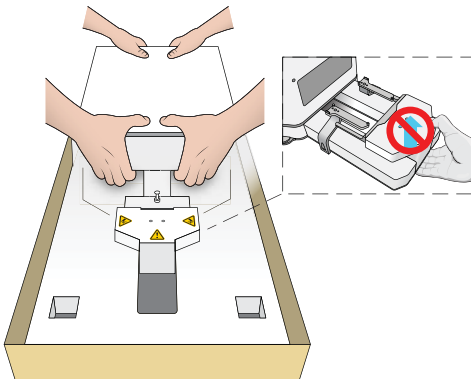
7 Carefully, lower the device down onto the foam again.

8 Before lifting the device out of the box and onto the table, ensure that you know the correct lift points and how to position the device on the table correctly.

CAUTION Placing the entire device on a flat surface while the screws and the shipping bracket are attached to the Loader will cause potential damage to the device. Ensure that you place only the Centrifuge portion on the table surface and keep the front Loader shipping bracket suspended off of the table surface.



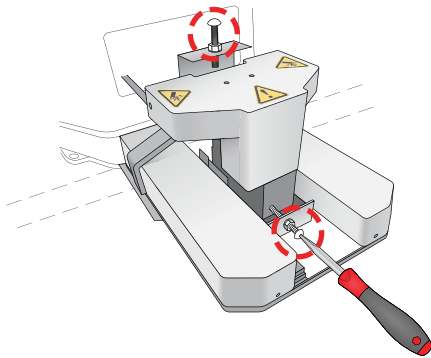
Figure Correct and incorrect lift points



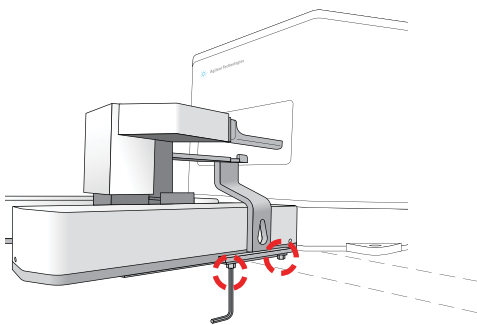
9 With a person positioned on each side of the device, grasp the Microplate Centrifuge using the correct lift points. Carefully lift it out of the shipping box and place only the Centrifuge portion on the table. Ensure that the Loader shipping bracket (front section) is off of the table surface completely until you uninstall the shipping bracket.

10 Uninstall the shipping bracket from the Loader as follows:

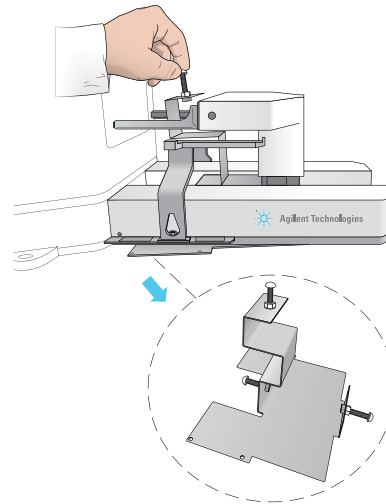
- a To loosen the two nylon fasteners that secure the bracket at the top and front of the Loader, use an 11-mm open wrench to loosen the two nylon nuts, and then use a flathead screwdriver to loosen the nylon screws.



- b Use a 3-mm hex wrench to remove the four screws that attach the shipping bracket to the bottom surface of the Loader.



- c Carefully remove the shipping bracket. Remove the foam from the Centrifuge door.



11 Open the small box that you set aside in [step 3](#). Carefully, unwrap the packing foam and remove the two centrifuge buckets.

The small box also contains four screws (G5550-02696) and an e-stop jumper (G5550-12174), which might be needed for the installation.

Inspecting the contents

If an item is defective on arrival, contact Agilent Technologies as soon as possible.

- In North America, call 1.800.227.9770.
- For other locations, contact your region's Agilent Technologies office:
<http://www.chem.agilent.com/en-US/ContactUS/Pages/ContactUs.aspx>.

Note: The power and communication cables, air fittings, and other items are shipped separately.

About installation, setup, and operation

For safety information, laboratory setup requirements, installation instructions, and operating instructions see the *Microplate Centrifuge User Guide* and the *Automated Centrifuge Loader User Guide*. For operating instructions, see the *Centrifuge with Loader Quick Guide*.

The user guides are available from the Help menu of the VWorks software or as PDF files on the software CD. For the latest versions, go to www.agilent.com/chem/askb.

Contacting Agilent Technologies

Technical Support: 1.800.979.4811 (US only) or +1.408.345.8011 (rest of the world)
service.automation@agilent.com

Customer Service: 1.866.428.9811 or +1.408.345.8356
customerservice.automation@agilent.com

European Service: +44 (0)8457125292
euroservice.automation@agilent.com

Documentation feedback:
documentation.automation@agilent.com

Web: www.agilent.com/lifesciences/automation