



# Feature Extraction 12.0 or 12.1 to 12.2

## Migration Utility

**For Research Use Only. Not for use in diagnostic procedures.**

Installing the Migration Utility 2

Running the Migration Utility 3

To export data from a previous version of Feature Extraction (12.0 or 12.1) 4

To import data to Feature Extraction 12.2 5

Troubleshooting 8

To display the log file 8

Error messages 8

The Feature Extraction Migration Utility provides a way to move grid templates, protocols, and metric sets from Feature Extraction 12.0 or 12.1 to Feature Extraction 12.2. This guide contains information on how to use the Migration Utility for this purpose.



## Installing the Migration Utility

You can use the Migration Utility to migrate data for the following scenarios:

- Feature Extraction 12.0 or 12.1 is installed on a different computer than Feature Extraction 12.2. In this scenario, you need to install the Migration Utility software on both computers.
- Feature Extraction 12.0 or 12.1 is installed on the same computer as Feature Extraction 12.2. In this scenario, only one copy of the Migration Utility software is required. However, because the previous version of Feature Extraction cannot simultaneously co-exist on the same computer as Feature Extraction 12.2, you must first export data from the previous version of Feature Extraction, then uninstall Feature Extraction. You can then install Feature Extraction 12.2 and import the data using the Migration Utility software.

### NOTE

It is not necessary to close Feature Extraction while you run the Migration Utility. However, make sure that you are not extracting data.

Close the Migration Utility before extracting data in Feature Extraction.

---

- 1 Download the MigrationUtility.zip file from [www.agilent.com/genomics/MigrationUtility](http://www.agilent.com/genomics/MigrationUtility).
- 2 Unzip the MigrationUtility.zip file to a location where you want to install the Migration Utility software.  
A Migration\_UTILITY folder is created that contains the Migration Utility.

### NOTE

If the previous version of Feature Extraction is installed on a different computer than Feature Extraction 12.2, then you need to install the Migration Utility software on both computers.

---

## Running the Migration Utility

Complete migration of data from a previous version of Feature Extraction (12.0 or 12.1) to Feature Extraction 12.2 is performed by the program in two steps. First, the grid templates, protocols, and metric sets are exported from the previous version of Feature Extraction. Then, the exported data are imported into Feature Extraction 12.2.

- If the previous version of Feature Extraction is installed on a different computer than Feature Extraction 12.2, first run the Migration Utility on the computer with the previous version of Feature Extraction to export the data. Then, run the Migration Utility on the computer with Feature Extraction 12.2 to import the data.

### NOTE

If you are migrating data from one computer to another, make sure that the computer with Feature Extraction 12.2 has access to the folder where you are exporting the data. If not, after you export the data, you must copy the Migration Utility Output folder from the computer with the previous version of Feature Extraction to the Migration Utility installation folder on the computer with Feature Extraction 12.2.

---

- If the previous version of Feature Extraction is currently installed on the same computer where you want to install Feature Extraction 12.2, first run the Migration Utility in the previous version to export the data. Then, uninstall the previous version of Feature Extraction and install Feature Extraction 12.2. Finally, run the Migration Utility in Feature Extraction 12.2 to import the data.

### CAUTION

Do not run extractions or perform export, import, or delete operations within Feature Extraction while the Migration Utility is exporting or importing data.

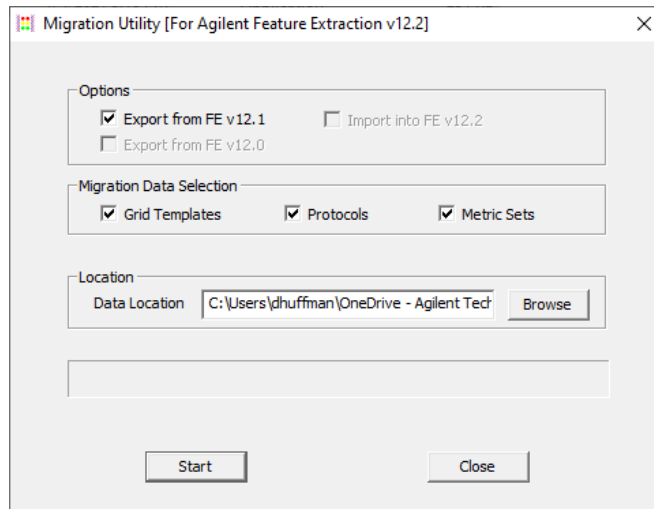
---

## To export data from a previous version of Feature Extraction (12.0 or 12.1)

- 1 On the computer where the previous version of Feature Extraction is installed, browse to the folder where you installed the Migration Utility software, and start the MigrationUtility.exe program.

The MigrationUtility dialog box opens. When the program starts, it creates Output and Logs folders in the Migration Utility installation folder.

The program recognizes that Feature Extraction 12.0 or 12.1 software is installed, and by default selects to export grid templates, protocols, and metric sets.



**Figure 1** Migration Utility dialog box

- 2 (Optional) Clear the boxes for data you do not want to migrate (Grid Templates, Protocols, Metric Sets).
  - 3 By default, the program exports the data to the <Migration Utility installation folder>\Migration\_UTILITY\Output folder. To change the export location:
    - a Next to the Data Location field, click **Browse**.
    - b In the Browse for Folder dialog box, browse to the folder where you want to export the data. Click the folder to select it.
- OR

## To import data to Feature Extraction 12.2

To create a folder, browse to a location and click **Make New Folder**, then type the name of the folder where you want to export the data.

**c** Click **OK**.

### NOTE

Make sure you have write permissions in the Output folder location.

---

**4** Click **Start**.

The program exports the selected data from the previous version of Feature Extraction. During data export, a progress bar appears in the dialog box.

**5** When data export is complete, a message box opens. Click **OK**.

Exported data is saved in the designated Output folder, in separate folders: GridTemplates, MetricSets, and Protocols.

**6** If Feature Extraction 12.2 is to be installed on the same computer as the previous version of Feature Extraction, uninstall the previous version and install version 12.2 before continuing.

## To import data to Feature Extraction 12.2

**1** On the computer where Feature Extraction 12.2 is installed, browse to the folder where you installed the Migration Utility software, and double-click the MigrationUtility.exe program.

The MigrationUtility dialog box opens. The program recognizes that Feature Extraction 12.2 software is installed, and by default selects to import grid templates, protocols, and metric sets.

### NOTE

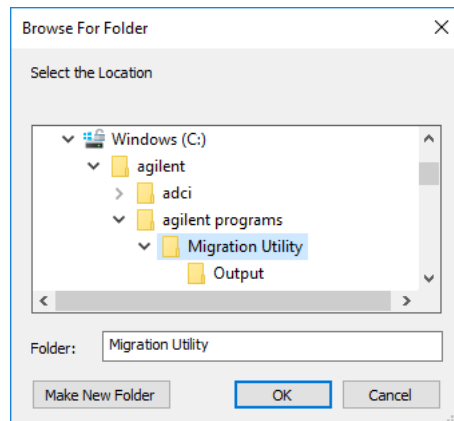
Make sure you have write permissions in the Output folder before you start the Import operation.

---

**2** (Optional) clear the boxes for data you do not want to migrate.

## To import data to Feature Extraction 12.2

- 3 By default, the program imports the data from the <Migration Utility Installation Folder>\Migration\_UTILITY\Release\Output folder. To change the import location,
  - a Next to the Data Location field, click **Browse**.
  - b In the Browse for Folder dialog box, browse to and select the folder that contains the Output subfolder to which data was exported.



**Figure 2** Browse For Folder dialog box – select the folder containing the Output subfolder

- 4 Click **Start**.

The program imports the selected data from the Import Location folder. During data import, the progress is displayed in the MigrationUtility dialog box.

- 5 When import is complete, a message appears. Click **OK**.

### NOTE

If not all files are imported, check the log file for further information. See [“To display the log file”](#) on page 8.

**NOTE**

If you need to stop the data migration process for any reason, click **Abort**. In the message box that opens, click **Yes** to confirm. The data migration does not abort until you click **Yes**.

If data migration is stopped during data export, the export operation stops and the current output file is not saved in the Output folder. All files exported before the abort operation remain in the Output folder. No further files are exported.

If data migration is stopped during data import, the current file import is completed, but no additional files are imported. Data imported before the abort operation are available in Feature Extraction 12.2.

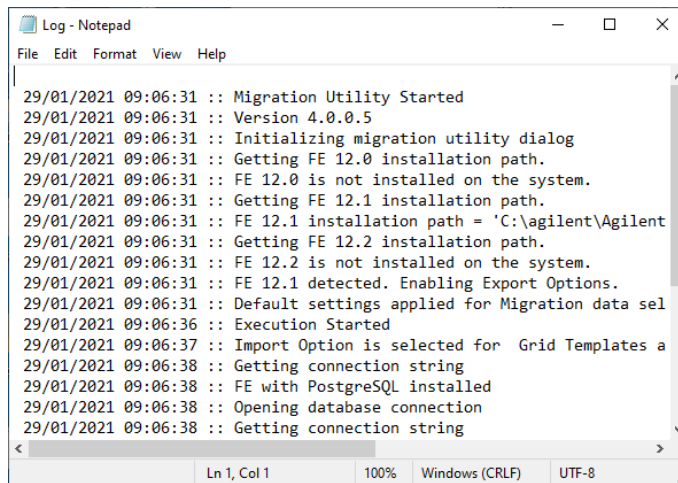
---

## Troubleshooting

During data migration, the status of each data migration operation is saved in a log file. The log file is useful in troubleshooting.

### To display the log file

- 1 Browse to the Logs folder in the Migration Utility export/import location. By default, this is <Migration Utility installation folder>\Migration\_Utility\Logs. If you changed the default location, browse to that location.
- 2 Using a text editor, open the Logs.txt file.  
The Migration Utility log file is displayed.



```
Log - Notepad
File Edit Format View Help
29/01/2021 09:06:31 :: Migration Utility Started
29/01/2021 09:06:31 :: Version 4.0.0.5
29/01/2021 09:06:31 :: Initializing migration utility dialog
29/01/2021 09:06:31 :: Getting FE 12.0 installation path.
29/01/2021 09:06:31 :: FE 12.0 is not installed on the system.
29/01/2021 09:06:31 :: Getting FE 12.1 installation path.
29/01/2021 09:06:31 :: FE 12.1 installation path = 'C:\agilent\Agilent
29/01/2021 09:06:31 :: Getting FE 12.2 installation path.
29/01/2021 09:06:31 :: FE 12.2 is not installed on the system.
29/01/2021 09:06:31 :: FE 12.1 detected. Enabling Export Options.
29/01/2021 09:06:31 :: Default settings applied for Migration data sel
29/01/2021 09:06:36 :: Execution Started
29/01/2021 09:06:37 :: Import Option is selected for Grid Templates a
29/01/2021 09:06:38 :: Getting connection string
29/01/2021 09:06:38 :: FE with PostgreSQL installed
29/01/2021 09:06:38 :: Opening database connection
29/01/2021 09:06:38 :: Getting connection string
Ln 1, Col 1 100% Windows (CRLF) UTF-8
```

Figure 3 Migration Utility log file

### Error messages

When a problem occurs during data migration, a message is displayed that provides information about what happened. The following table describes possible messages and explanations.



**Table 1** Error messages

<b>Problem</b>	<b>Message displayed</b>	<b>Resolution</b>
Feature Extraction (v 12.0 or 12.1) is not installed on the system.	The Migration Utility requires Feature Extraction Software (12.0 or 12.1) to be installed on the system. Please check if one of these versions are installed on the system.	Check log file for details. Check that Feature Extraction 12.0 or 12.1 is installed on the computer.
Incorrect connection parameters provided.	Error in connecting to FE database. Please check log file at <Migration_utility_executable_path>\Logs for details.	Verify that the database service is running on the computer. Also, check that the database is properly installed and accessible through Feature Extraction.
Incorrect export folder path.	Error in creating Grid Template/Protocol/Metric Set XML. Please check log file at <Migration_utility_executable_path>\Logs for details.	Check that the export folder is located in the provided path. Also check if the user has access rights to write the file in that path. Check the log file for more details.
Incorrect import folder path.	Error in importing Grid Template/Protocol/ Metric Set XML. Please check log file at <Migration_utility_executable_path>\Logs for details.	Check that the import folder is located in the provided path and if user has read access rights. Also check that the GridTemplates, Protocols, and MetricSets folders are present at this location. Check log file for more information.
Not enough space.	Not enough disk space to generate Grid Template XML.	Check disk space available at the destination folder drive and create some free disk space.
One instance of the utility is already running on the system and user tries to launch another instance	Migration Utility is already running on this computer. Only one instance of Migration Utility is allowed per computer.	Only one instance of the utility can run at a time. Do not start the Migration Utility while it is already running.
Not enough physical memory left to migrate large data files.	Not enough storage is available to process this command.	Close all unnecessary programs and try again. Make sure the computer meets the memory requirements for Feature Extraction.

## Error messages

**Table 1** Error messages (continued)

<b>Problem</b>	<b>Message displayed</b>	<b>Resolution</b>
Tried to import a design that was previously imported.	Either grid template <Migration Utility Installation_folder>\Migration_UTILITY\Output\GridTemplates\<GridFileName>.xml already exists or unable to write to Temp folder while importing.	Grid template already exists in database.

[www.agilent.com](http://www.agilent.com)

## In this book

This guide contains information on how to use the Feature Extraction Migration Utility to transfer grid templates, protocols, and metric sets from Feature Extraction version 12.0 or 12.1 to Feature Extraction version 12.2.

© Agilent Technologies, Inc. 2021

Revision A0, January 2021



G4460-90061