

Agilent MassHunter Workstation

## Offline Qualitative and Quantitative Analysis for GCMS Installation Guide

About This Guide 3

Step 1: Prepare for Installation 4

Step 2: Install the Qualitative Analysis Program 6

Step 3: Install the Quantitative Analysis Program 11

Step 4: Install Quantitative Analysis Supplemental Items 19

Step 5: Configure Excel for MassHunter 21

## Notices

© Agilent Technologies, Inc. 2022

No part of this manual may be reproduced in any form or by any means (including electronic storage and retrieval or translation into a foreign language) without prior agreement and written consent from Agilent Technologies, Inc. as governed by United States and international copyright laws.

### Manual Part Number

G3336-90067

### Edition

September 2022

Agilent Technologies, Inc.  
5301 Stevens Creek Blvd.  
Santa Clara, CA 95051

### Warranty

**The material contained in this document is provided “as is,” and is subject to being changed, without notice, in future editions. Further, to the maximum extent permitted by applicable law, Agilent disclaims all warranties, either express or implied, with regard to this manual and any information contained herein, including but not limited to the implied warranties of merchantability and fitness for a particular purpose. Agilent shall not be liable for errors or for incidental or consequential damages in connection with the furnishing, use, or performance of this document or of any information contained herein. Should Agilent and the user have a separate written agreement with warranty terms covering the material in this document that conflict with these terms, the warranty terms in the separate agreement shall control.**

### Technology Licenses

The hardware and/or software described in this document are furnished under a license and may be used or copied only in accordance with the terms of such license.

### Restricted Rights Legend

U.S. Government Restricted Rights. Software and technical data rights granted to the federal government include only those rights customarily provided to end user customers. Agilent provides this customary commercial license in Software and technical data pursuant to FAR 12.211 (Technical Data) and 12.212 (Computer Software) and, for the Department of Defense, DFARS 252.227-7015 (Technical Data -Commercial Items) and DFARS 227.7202-3 (Rights in Commercial Computer Software or Computer Software Documentation).

### Safety Notices

#### CAUTION

**A CAUTION notice denotes a hazard. It calls attention to an operating procedure, practice, or the like that, if not correctly performed or adhered to, could result in damage to the product or loss of important data. Do not proceed beyond a CAUTION notice until the indicated conditions are fully understood and met.**

#### WARNING

**A WARNING notice denotes a hazard. It calls attention to an operating procedure, practice, or the like that, if not correctly performed or adhered to, could result in personal injury or death. Do not proceed beyond a WARNING notice until the indicated conditions are fully understood and met.**

# About This Guide

Use this guide to install or upgrade MassHunter Workstation software on your offline computer.

This guide applies to the installation of:

- MassHunter Qualitative Analysis B.07.00 SP1 and later
- MassHunter Quantitative Analysis B.09.00 and later

MassHunter software is supported by:

- 64-bit Windows 7 Professional SP1 and Windows 10
- Microsoft Excel 2013 and 2016

Excel 2016 is compatible with the following revisions:

- MassHunter Qualitative Analysis B.07.00 SP1 or higher
- MassHunter Quantitative Analysis B.07.01 with Quantitation Analysis Reporting SP2

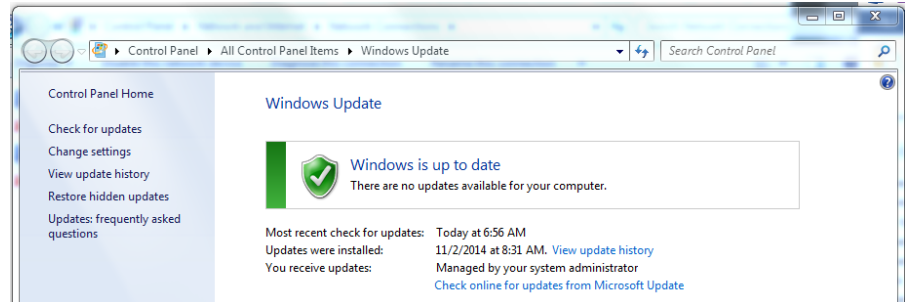
## Step 1: Prepare for Installation

### Step 1: Prepare for Installation

- 1 Install Microsoft Excel 2013 or 2016. See the manufacturer's documentation for help installing this application. For Qualitative Analysis, Excel is not required to generate reports.

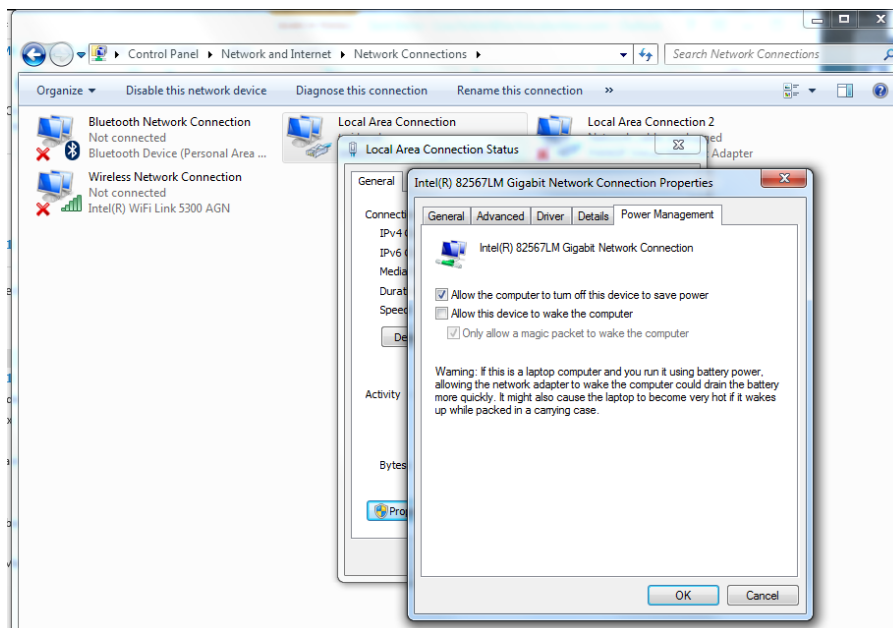


- 2 Run **Windows Update** to ensure you have the latest critical updates and security fixes. **Windows Update** must be complete before you continue.

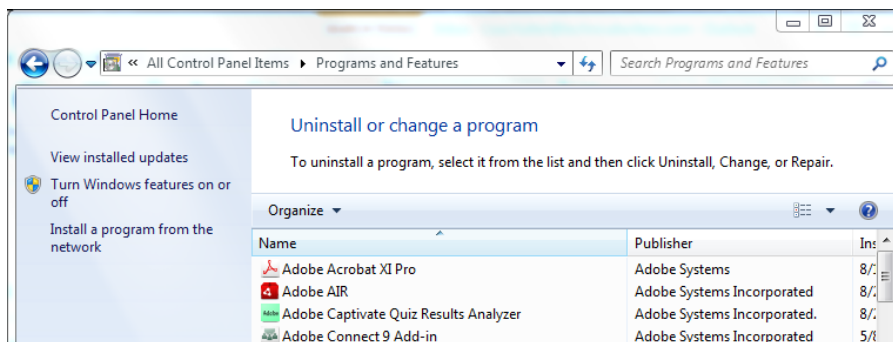


## Step 1: Prepare for Installation

- 3 Confirm that the Windows LAN power management is disabled. See the Microsoft Windows help for more information.



- 4 If you are upgrading your MassHunter Workstation Qualitative Analysis or Quantitative Analysis B.05.00 or earlier, use the **Uninstall Programs** command in your **Windows Control Panel** to remove the programs that you will be upgrading. See the Microsoft Windows help for more information on uninstalling programs.



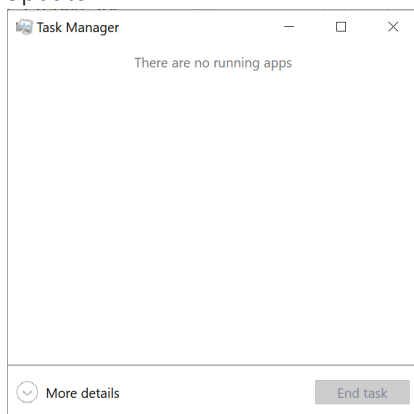
- 5 After you have removed the programs, reboot your computer.

## Step 2: Install the Qualitative Analysis Program

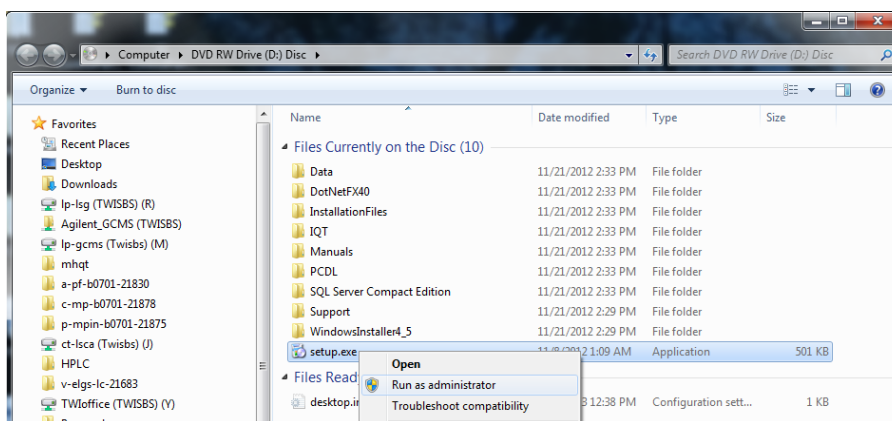
### Step 2: Install the Qualitative Analysis Program

Do this step if you want to install the Qualitative Analysis program. If you are installing just the service pack, go directly to **step 13**.

- 1 Verify that no other program is running on your system, including Windows Update.

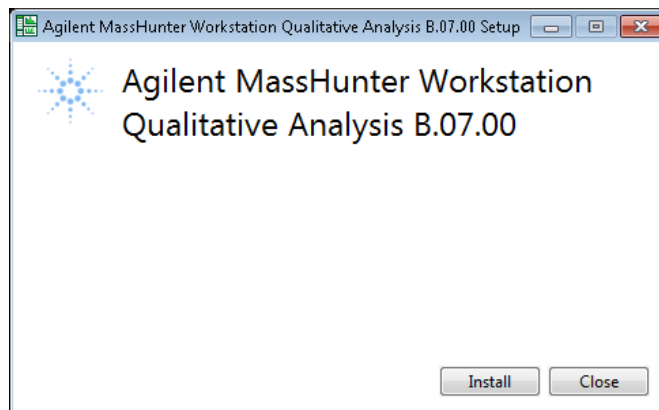


- 2 From the installation media, right-click **setup.exe** and select **Run as administrator**.

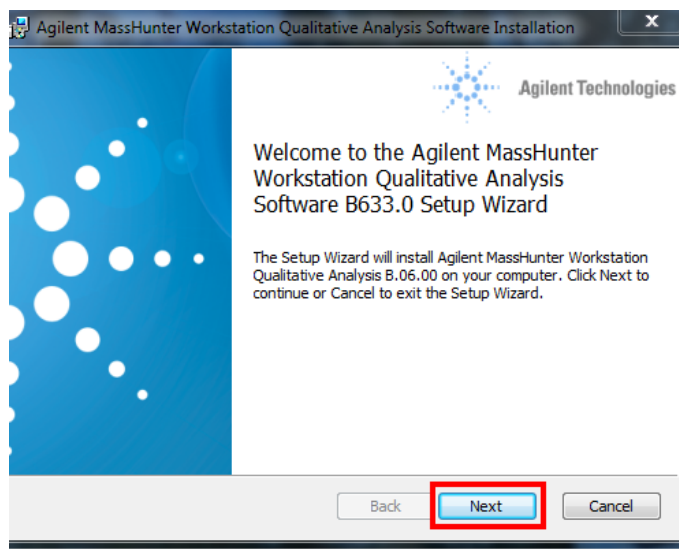


## Step 2: Install the Qualitative Analysis Program

- 3 Click **Install** to begin the installation process.

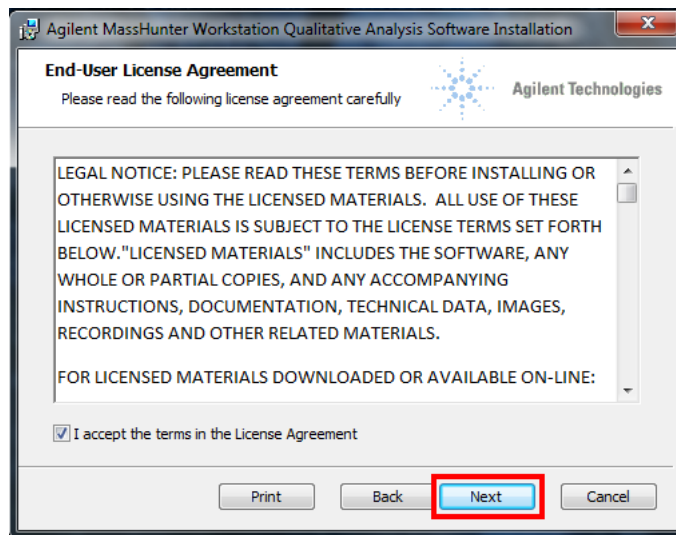


- 4 Click **Next** to continue with the installation.



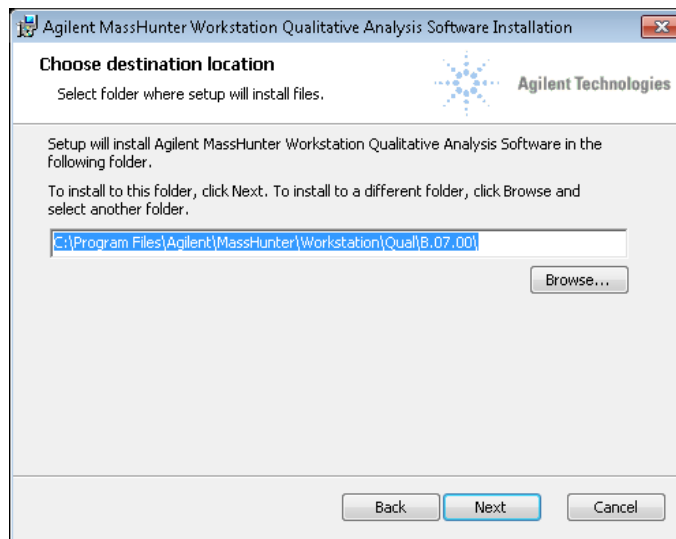
## Step 2: Install the Qualitative Analysis Program

- 5 Review the License Agreement, and accept the terms. Click **Next** to continue.



Through the installation, you can click **Next** to continue with the installation, **Back** to review your previous selections, or **Cancel** to end the installation.

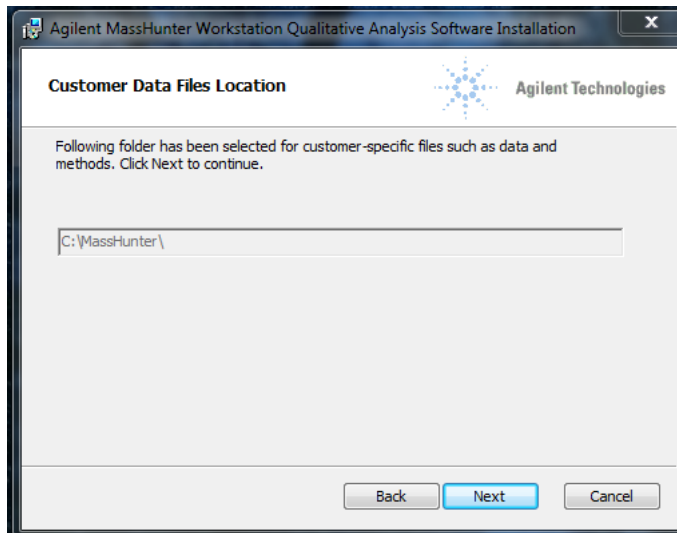
- 6 Use the default location for your software files or click **Browse** to choose a different location, and click **Next**.



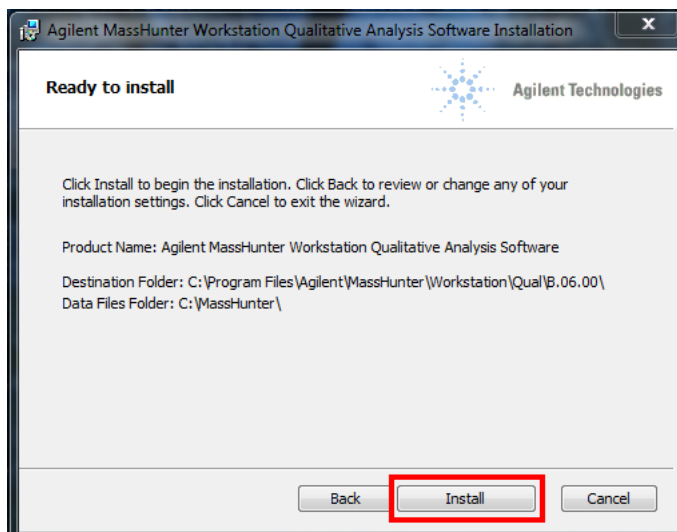


## Step 2: Install the Qualitative Analysis Program

- 7 The location for your data file storage is displayed. Click **Next**.



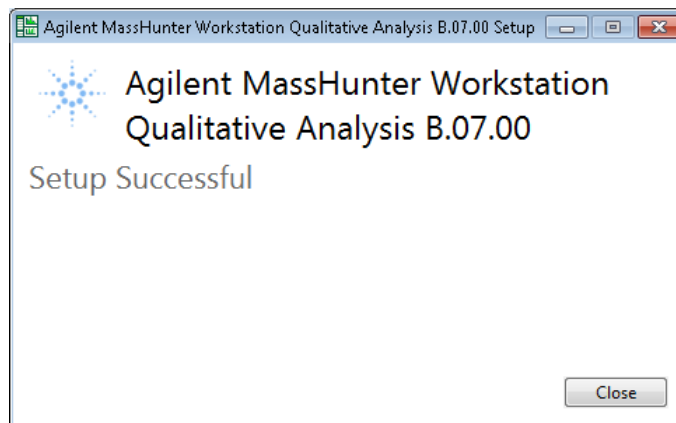
- 8 Review the installation information. Click **Install** to continue.



- 9 Click **Finish** to complete the installation.

## Step 2: Install the Qualitative Analysis Program

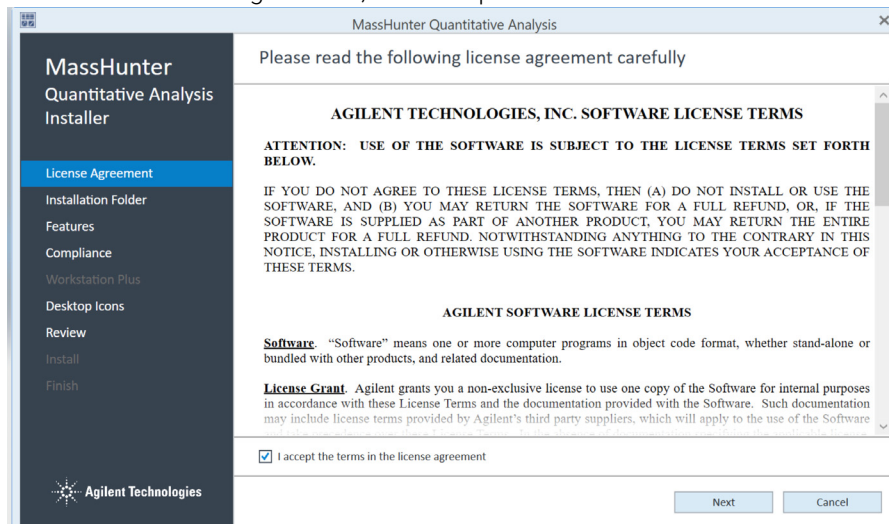
10 Click **Close** to exit the program.



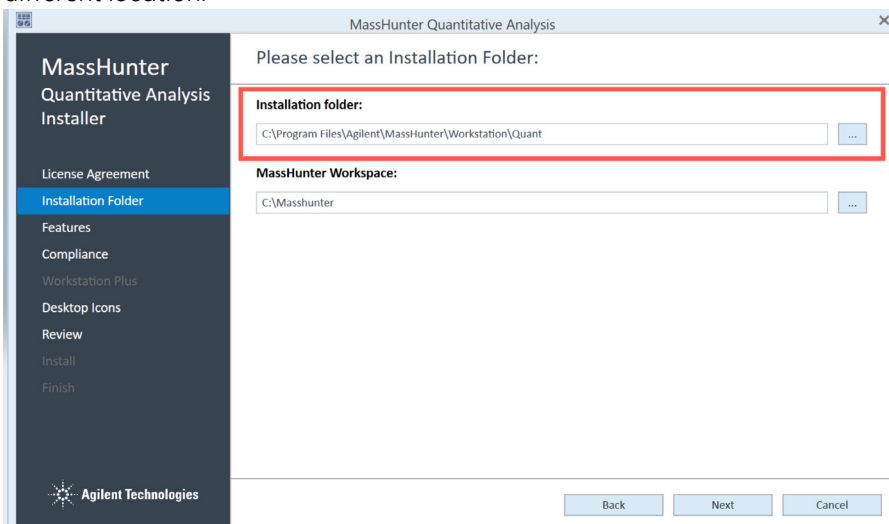


### Step 3: Install the Quantitative Analysis Program

- 3 Review the License Agreement, and accept the terms. Click **Next** to continue.

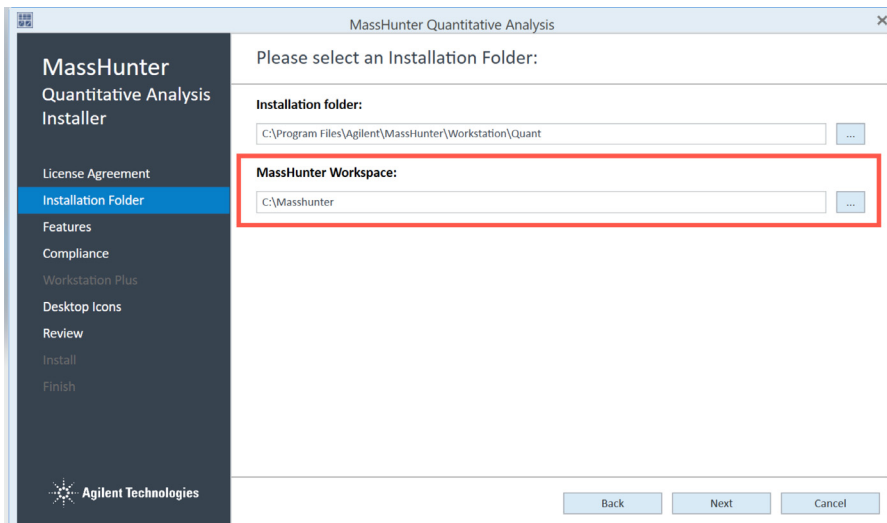


- 4 Install the program to the default location, or click **Browse** to choose a different location.

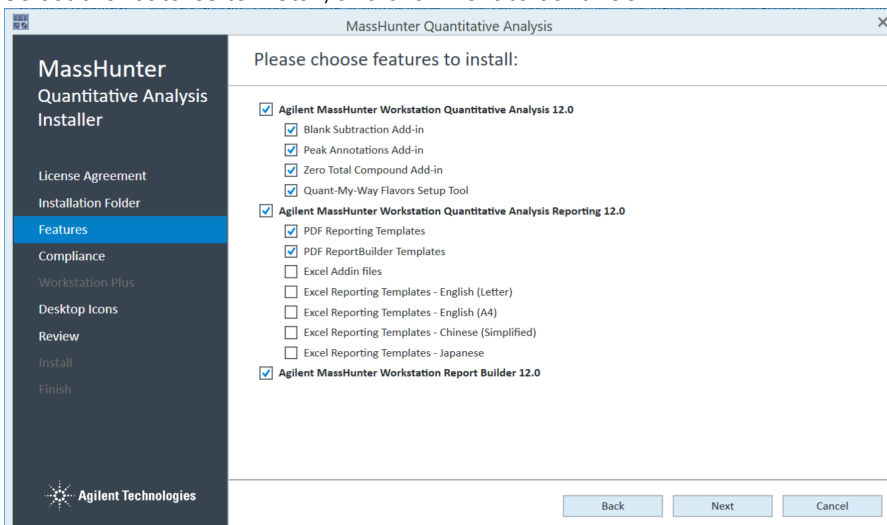


### Step 3: Install the Quantitative Analysis Program

- 5 Create a data folder in the default location, or click **Browse** to choose a different location.



- 6 Click **Next** to continue.
- 7 Select the features to install, and click **Next** to continue.



### Step 3: Install the Quantitative Analysis Program

Use Add-ins for additional features:

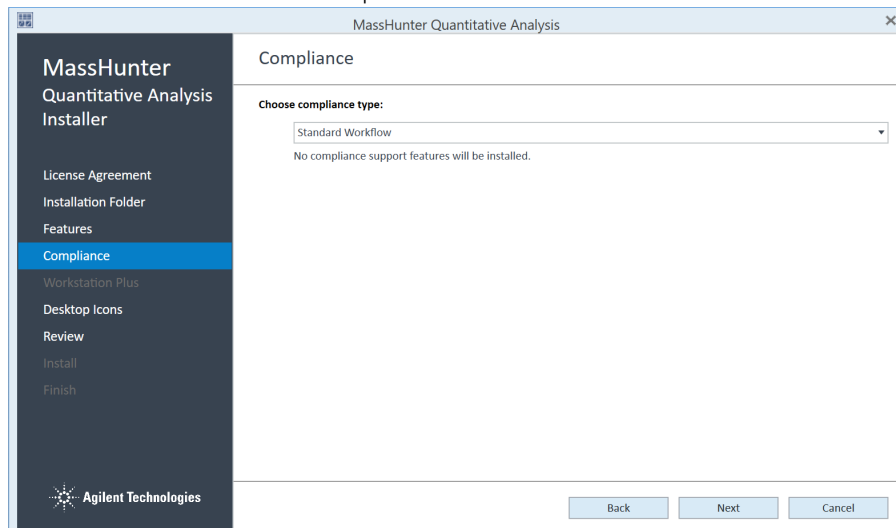
- **Blank Subtraction Add-in:** This add-in allows subtraction of the 'Blank' and/or 'DoubleBlank' sample final concentration and places the blank-subtracted concentrations into the target compound Custom Calculation column of the batch table. If a batch contains multiple 'Blank' and/or 'DoubleBlank' samples, the average blank concentration is used.
- **Peak Annotations Add-in:** In the Quantitative Analysis program, this add-in allows you to add an abbreviation to the batch table that indicates the reason for manually integrating target or ISTD compounds.
- **Zero Total Compound Add-in:** In the Quantitative Analysis program, this add-in allows you to zero the peaks for all compounds in a group.
- **Quant-My-Way Flavors Setup Tool:** This tool allows you to use the Quant-My-Way Flavors Setup program to create additional Quantitative Analysis flavors that display the tools and menu options you need for your laboratory or function. See the Agilent MassHunter Quantitative Analysis Quant-My-Way Flavors Setup Familiarization Guide.

The reporting templates are installed on the local hard drive with the program to MassHunter/Report Templates/Quant/. If you plan to use MassHunter Compliance Software, these templates must be uploaded to ECM before they can be accessed from the Quantitative Analysis program.

### Step 3: Install the Quantitative Analysis Program

8 The Compliance page may display options based on your software. From the available options, choose the compliance type.

- **Standard Workflow:** No compliance features are installed.



9 Click **Next** to continue.

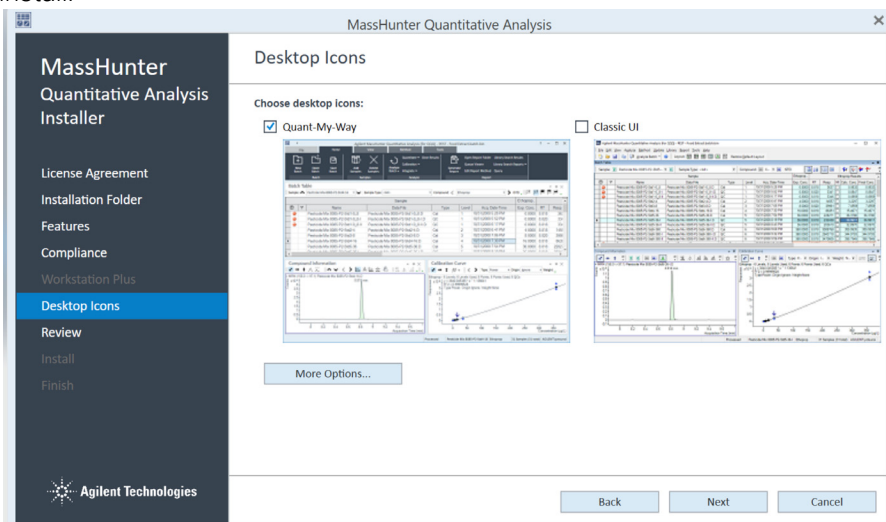
### Step 3: Install the Quantitative Analysis Program

10 Select the desktop icons, and click **Next** to continue.

The default set of icons open Quantitative Analysis in the **Quant-My-Way** user interface and include these standard flavors:

- Quantitative Analysis MS
- Quantitative Analysis QQQ
- Quantitative Analysis TOF
- Quantitative Analysis Q-TOF
- Unknowns Analysis
- Vanilla Pre-Configured Flavor

To install the standard set of icons for the **Classic** interface, select **Classic UI**. You can install a single set of interface icons, or select both interfaces to install.

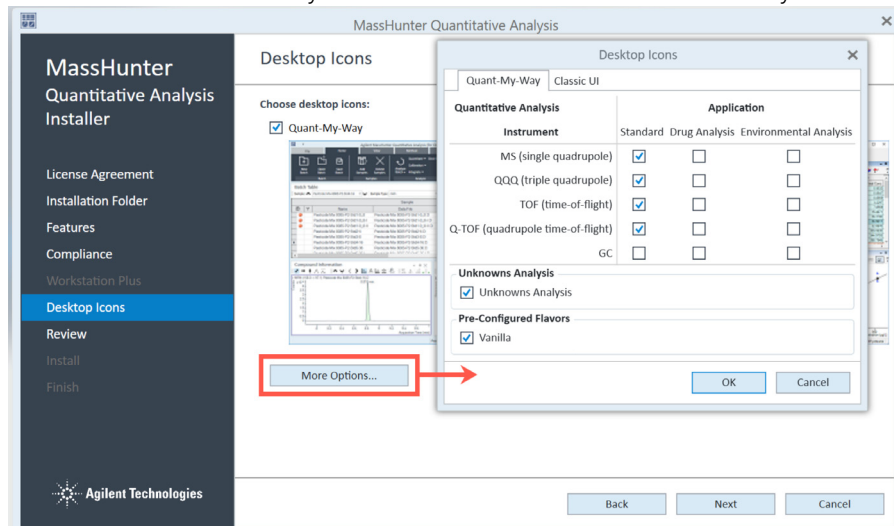


To include a GC instrument user interface or to manually select which desktop icons to install, click **More Options**, and select each desktop icon you want to install.



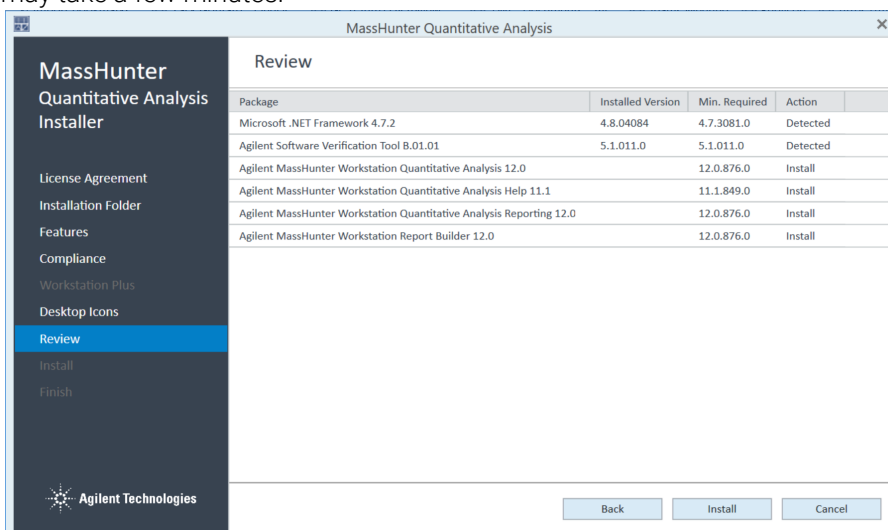
### Step 3: Install the Quantitative Analysis Program

The **Quant-My-Way** user interface offers a pre-configured **Vanilla** flavor. This flavor is based on the standard QQQ flavor and provides a simplified user interface that includes only the features needed for basic data analysis.



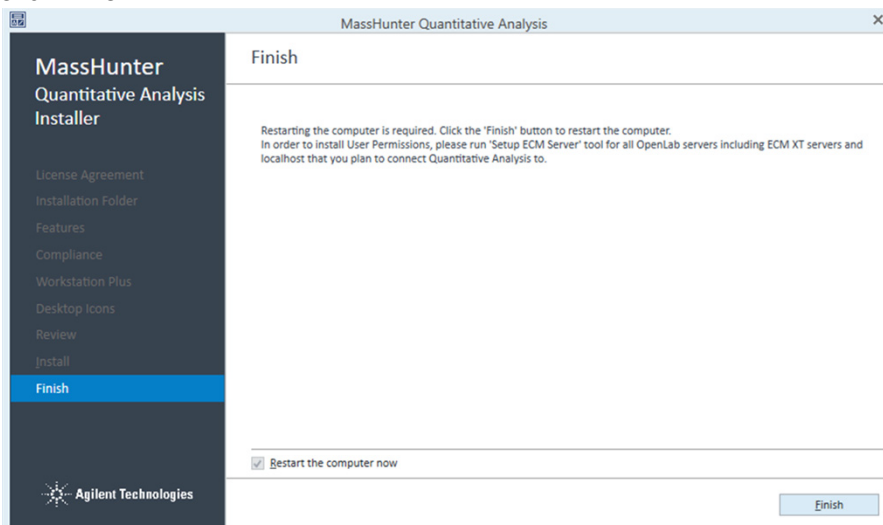
After installation, you can change which icons are displayed. See the Online Help for more information.

- 11 Click **Back** to change your settings, or click **Install** to continue. Installation may take a few minutes.



### Step 3: Install the Quantitative Analysis Program

#### 12 Click **Finish**.



#### 13 If the **Service Packs** folder exists on the installation media:

- a Open the **Service Packs** folder. If the folder contains another folder, such as SP1, open that folder.
- b Double-click the installation file ending with **SPx.msi**.
- c Follow the instructions to install the service pack.

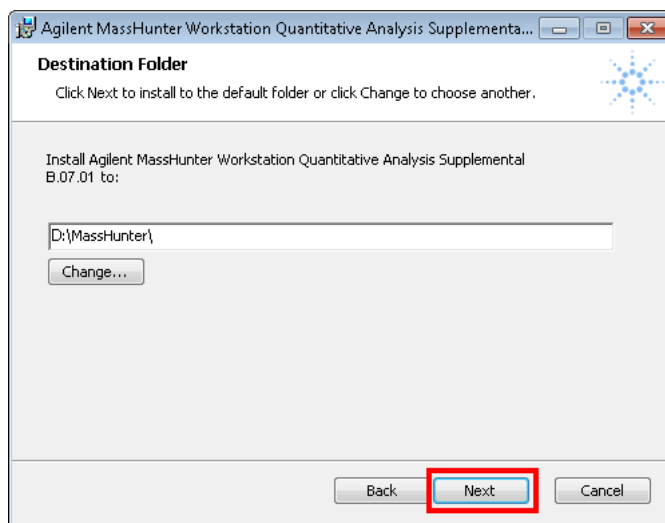
#### 14 To complete the installation, restart your machine.

## Step 4: Install Quantitative Analysis Supplemental Items

### Step 4: Install Quantitative Analysis Supplemental Items

Do this step if you want to copy the supplemental manuals, report template index, technical videos, and data to your computer from the installation media.

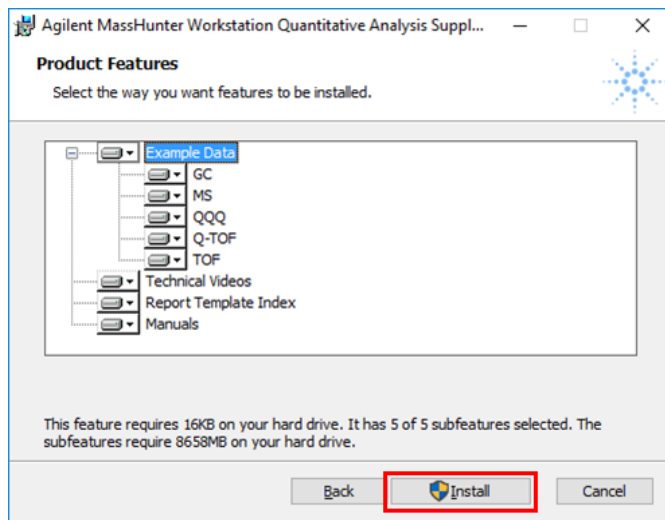
- 1 From the Quantitative Analysis installation media, right-click **Supplemental.msi**, and select **Install**.
- 2 Review the terms, and select **I accept the terms in the License Agreement**.
- 3 Click **Advanced** or **Install**
  - Click **Install** to continue the installation using the default options for all users.
  - Click **Advanced** to change the installation options.
    - a On the **Destination Folder** page, the default location is **D:\MassHunter\**. Click **Change** to choose a different location for the supplemental items. Click **Next** when the location is set.



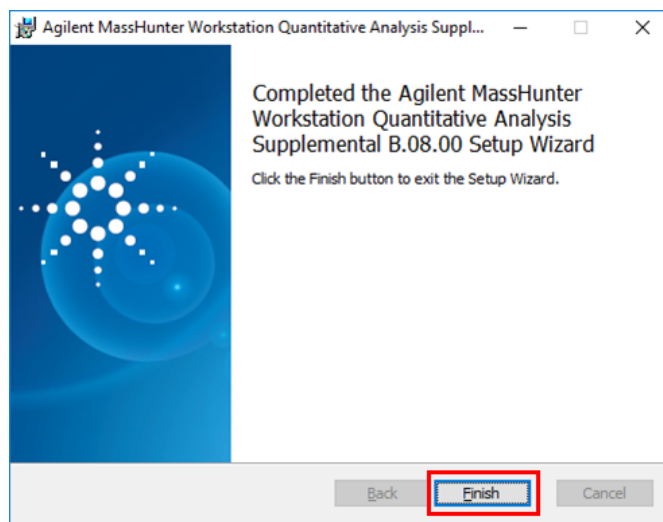
- b On the **Product Features** page, select the way you want to install each feature.

## Step 4: Install Quantitative Analysis Supplemental Items

c Click **Install**.



4 Click **Finish**.



To view the supplemental materials:

- For Windows 7, select **Start > All Programs > Agilent > MassHunter Workstation > Quantitative Analysis Supplemental**.
- For Windows 10, select **Start > All apps > Agilent MassHunter Quantitative > Quantitative Analysis Supplemental**.

## Step 5: Configure Excel for MassHunter

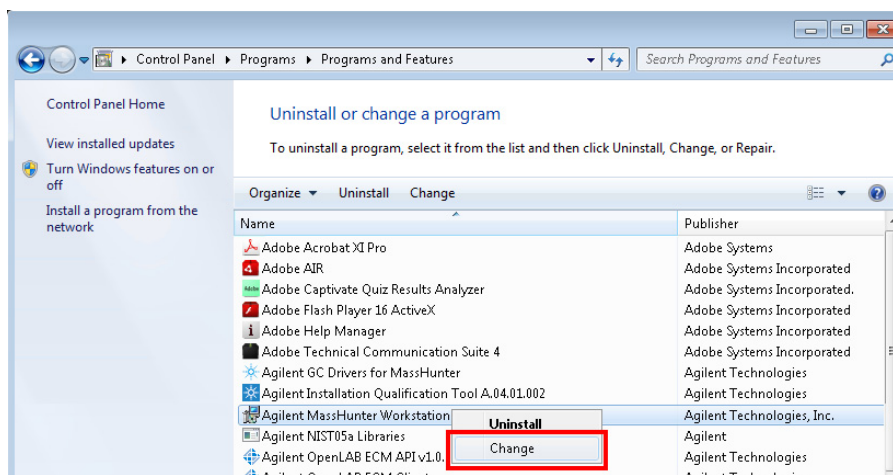
### Configure Excel for Qualitative Analysis

## Step 5: Configure Excel for MassHunter

Do this step only if Microsoft Excel was upgraded after Qualitative Analysis or Quantitative Analysis was installed or upgraded.

## Configure Excel for Qualitative Analysis

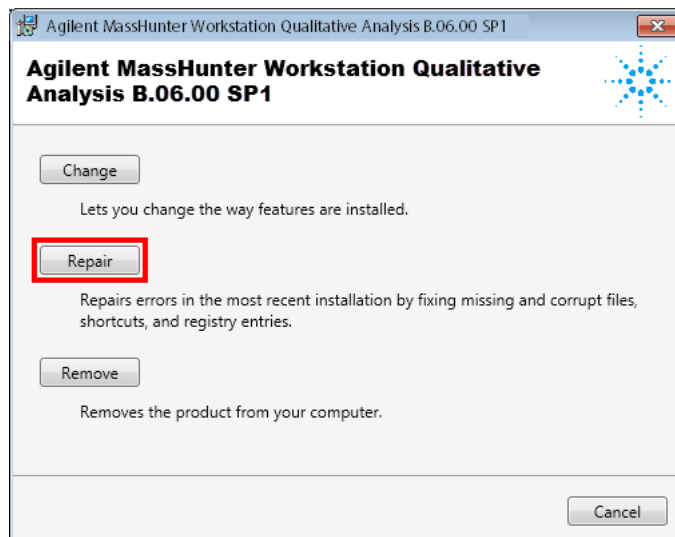
- 1 Click **Start > Control Panel > Programs and Features**.
- 2 Right-click **Agilent MassHunter Workstation Qualitative Analysis**, and select **Change**.



## Step 5: Configure Excel for MassHunter

### Configure Excel for Qualitative Analysis

- 3 Click **Repair**.



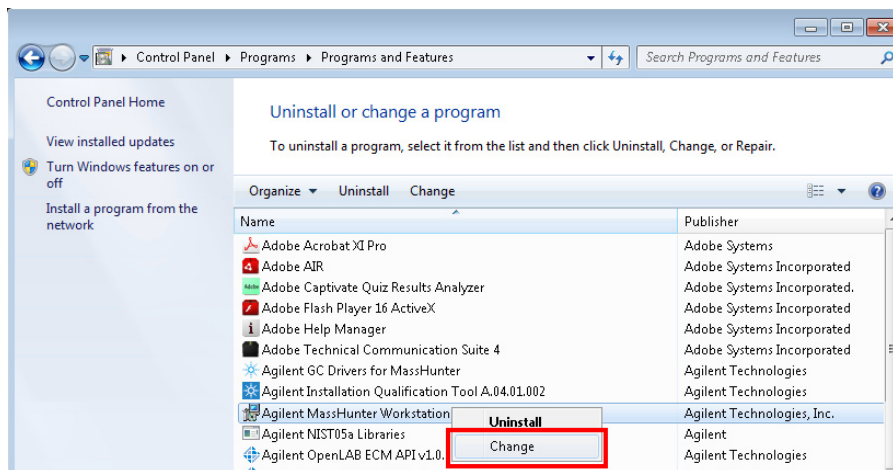
- 4 Follow the instructions to complete the process.

## Step 5: Configure Excel for MassHunter

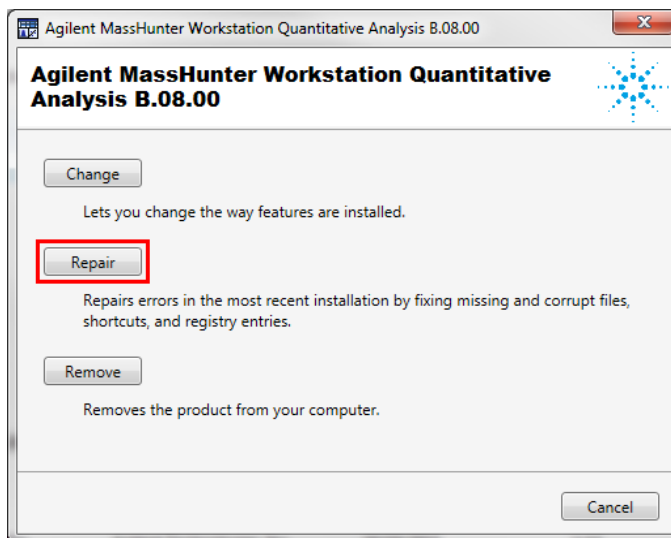
### Configure Excel for Quantitative Analysis

## Configure Excel for Quantitative Analysis

- 1 Click **Start > Control Panel > Programs and Features**.
- 2 Right-click **Agilent MassHunter Workstation Quantitative Analysis**, and select **Change**.



- 3 Click **Repair**.



- 4 Follow the instructions to complete the process.

[www.agilent.com](http://www.agilent.com)

© Agilent Technologies, Inc. 2022

September 2022



G3336-90067

