

Agilent MassHunter Workstation— Offline Qualitative and Quantitative Analysis for GCMS

Installation Guide

About this guide	3
Step 1. Prepare for Installation	4
Step 2. Install the Qualitative Analysis Program	6
Step 3. Install the Quantitative Analysis Program	10
Step 4. Install Quantitative Analysis Supplemental Items	17
Step 5. Configure Excel for MassHunter	19

Prepare for Installation

Install the Qualitative
Analysis Program

Install the Quantitative
Analysis Program

Configure Excel
for MassHunter



Agilent Technologies

Notices

© Agilent Technologies, Inc. 2016

No part of this manual may be reproduced in any form or by any means (including electronic storage and retrieval or translation into a foreign language) without prior agreement and written consent from Agilent Technologies, Inc. as governed by United States and international copyright laws.

Manual Part Number

G3335-90215

Edition

September 2016

Printed in USA

Agilent Technologies, Inc.
5301 Stevens Creek Boulevard
Santa Clara, CA 95051 USA

Warranty

The material contained in this document is provided “as is,” and is subject to being changed, without notice, in future editions. Further, to the maximum extent permitted by applicable law, Agilent disclaims all warranties, either express or implied, with regard to this manual and any information contained herein, including but not limited to the implied warranties of merchantability and fitness for a particular purpose. Agilent shall not be liable for errors or for incidental or consequential damages in connection with the furnishing, use, or performance of this document or of any information contained herein. Should Agilent and the user have a separate written agreement with warranty terms covering the material in this document that conflict with these terms, the warranty terms in the separate agreement shall control.

Technology Licenses

The hardware and/or software described in this document are furnished under a license and may be used or copied only in accordance with the terms of such license.

Restricted Rights Legend

If software is for use in the performance of a U.S. Government prime contract or sub-contract, Software is delivered and licensed as “Commercial computer software” as defined in DFAR 252.227-7014 (June 1995), or as a “commercial item” as defined in FAR 2.101(a) or as “Restricted computer software” as defined in FAR 52.227-19 (June 1987) or any equivalent agency regulation or contract clause. Use, duplication or disclosure of Software is subject to Agilent Technologies’ standard commercial license terms, and non-DOD Departments and Agencies of the U.S. Government will receive no greater than Restricted Rights as defined in FAR 52.227-19(c)(1-2) (June 1987). U.S. Government users will receive no greater than Limited Rights as defined in FAR 52.227-14

(June 1987) or DFAR 252.227-7015 (b)(2) (November 1995), as applicable in any technical data.

Safety Notices

A **CAUTION** notice denotes a hazard. It calls attention to an operating procedure, practice, or the like that, if not correctly performed or adhered to, could result in damage to the product or loss of important data. Do not proceed beyond a **CAUTION** notice until the indicated conditions are fully understood and met.

WARNING

A **WARNING** notice denotes a hazard. It calls attention to an operating procedure, practice, or the like that, if not correctly performed or adhered to, could result in personal injury or death. Do not proceed beyond a **WARNING** notice until the indicated conditions are fully understood and met.

About this guide

Use this guide to install or upgrade MassHunter Workstation software on your offline computer.

This guide applies to the installation of:

- MassHunter Qualitative Analysis B.07.00 SP1 and later.
- MassHunter Quantitative Analysis B.07.01 and later.

MassHunter software is supported by:

- 64-bit Windows 7 Professional SP1 and Windows 10
- Microsoft Excel 2013 and 2016

Excel 2016 is compatible with the following revisions:

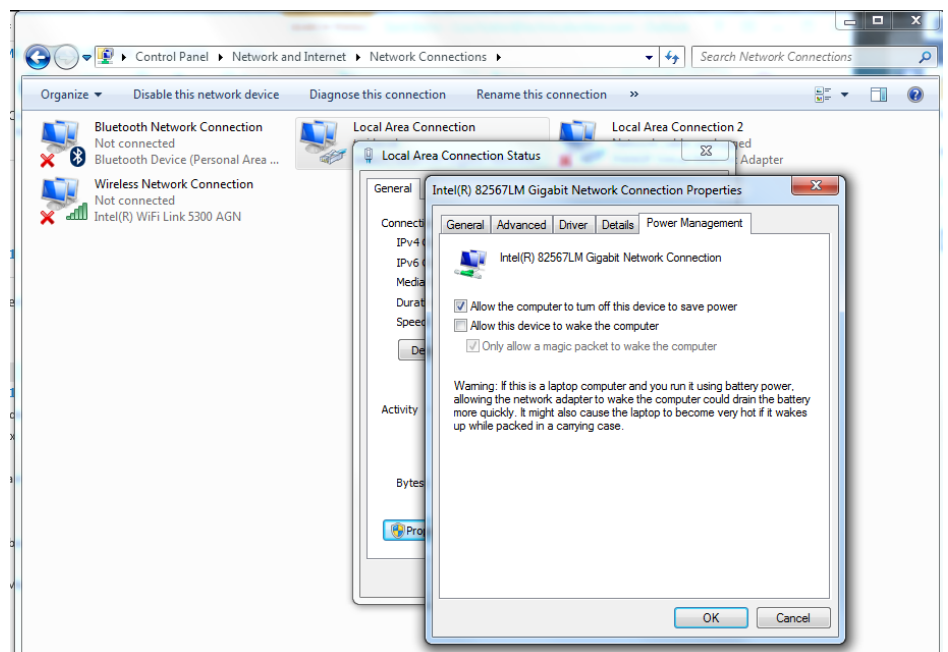
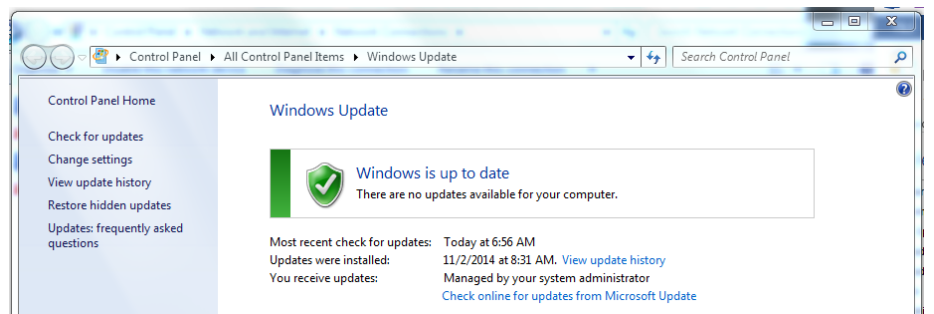
- MassHunter Qualitative Analysis B.07.00 SP1 or higher
- MassHunter Quantitative Analysis B.07.01 with Quantitative Analysis Reporting SP2

Step 1. Prepare for Installation

1. Install Microsoft Excel 2013 or 2016. See the manufacturer's documentation for help installing this application.
2. Run Windows Update to ensure you have the latest critical updates and security fixes. Windows Update must be completed before you continue.
3. Confirm that the Windows LAN power management is disabled. See the Microsoft Windows help for more information.

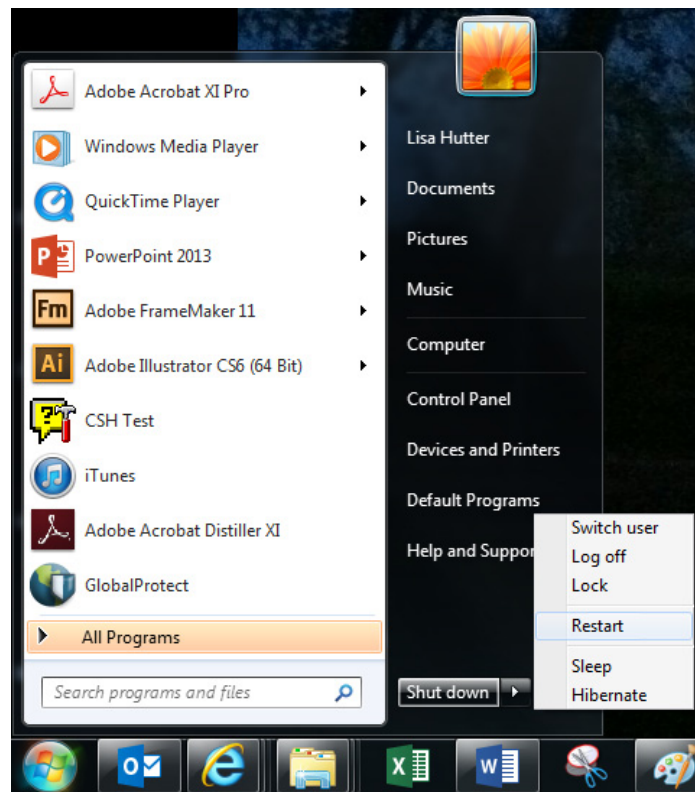
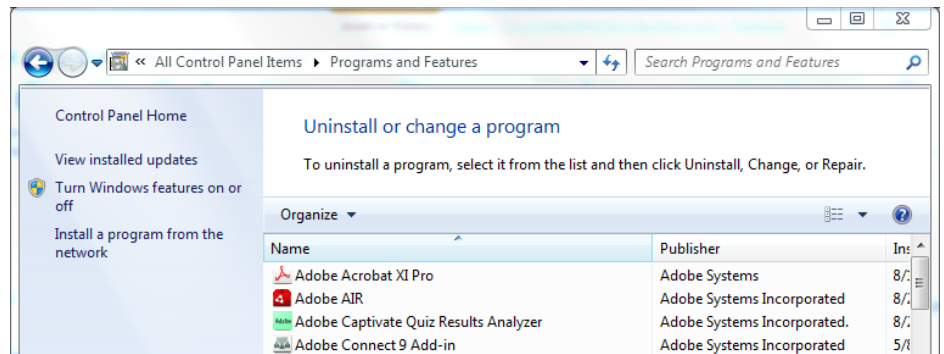


For Qualitative Analysis, Excel is not required to generate reports.



Step 1. Prepare for Installation

4. If you are upgrading your MassHunter Workstation Qualitative Analysis or Quantitative Analysis B.05.00 or earlier, use the **Uninstall Programs** command in your **Windows Control Panel** to remove the programs that you will be upgrading. See the Microsoft Windows help for more information on uninstalling programs.
5. After you have removed the programs, reboot your computer.

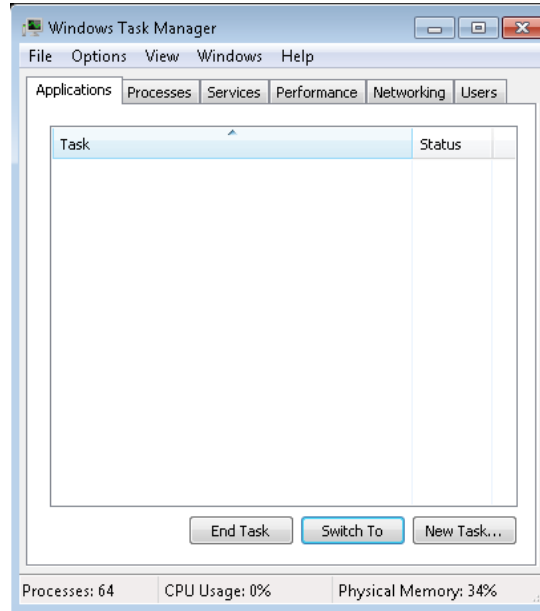


Step 2. Install the Qualitative Analysis Program

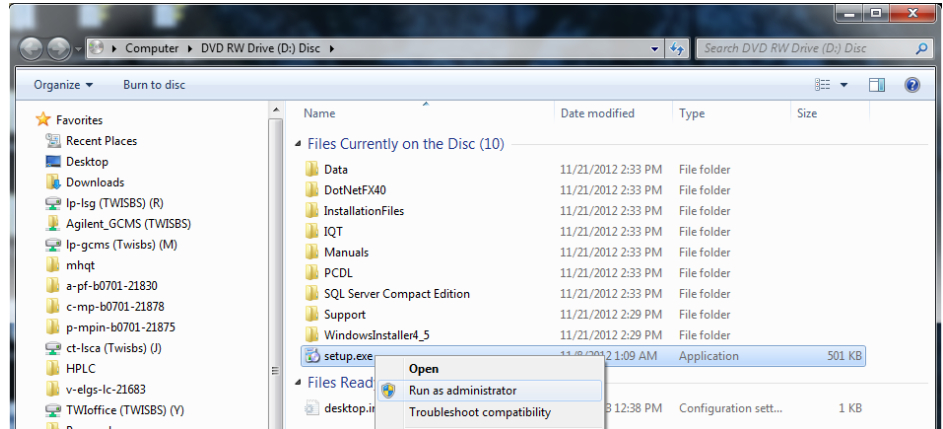
Step 2. Install the Qualitative Analysis Program

1. Verify that no other program is running on your system, including Windows Update.

Do this step if you want to install the Qualitative Analysis program. If you are installing just the service pack, go directly to step 13.

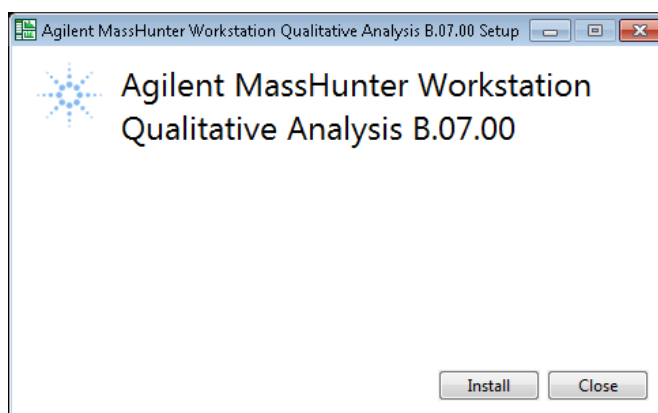


2. From DVD, right-click **setup.exe** and **Run as administrator**.

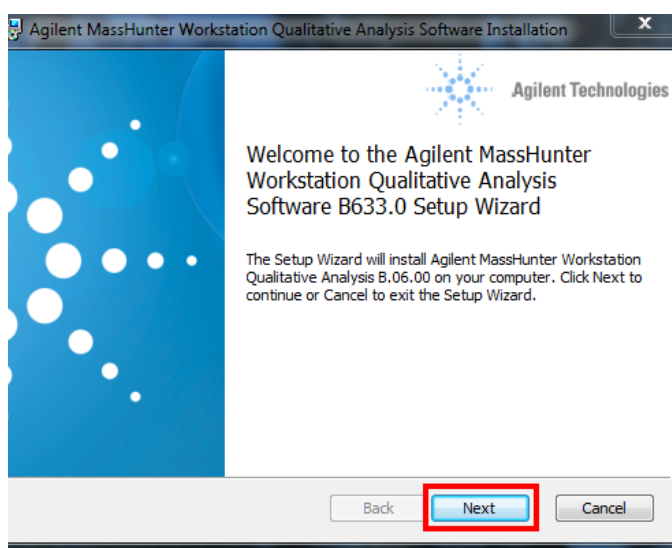


Step 2. Install the Qualitative Analysis Program

3. Click **Install** to begin the installation process.

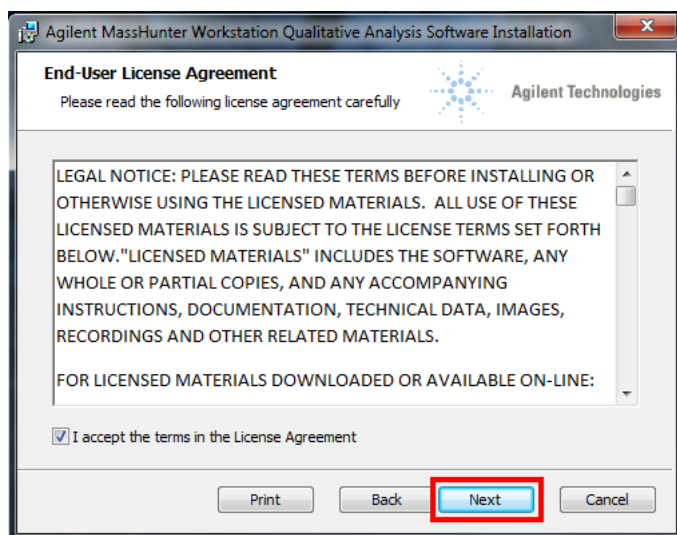


4. Click **Next** to continue with the installation.



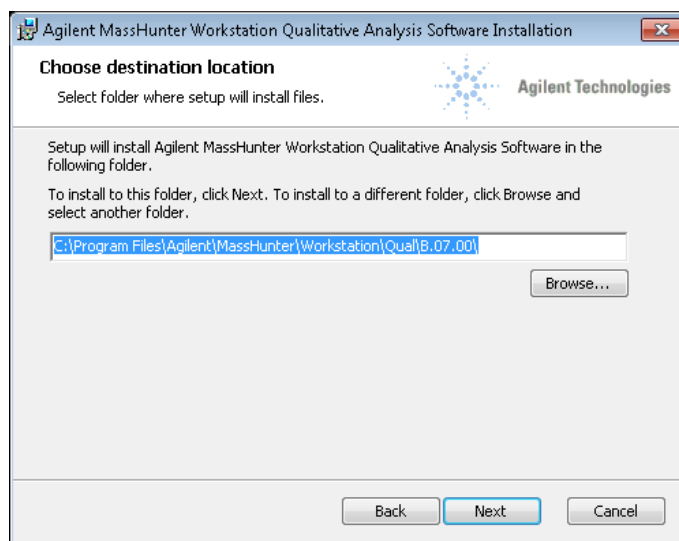
5. Review the License Agreement and accept the terms. Click **Next** to continue.

Through the installation you can click **Next** to continue with the installation, **Back** to review your previous selections, or **Cancel** to end the installation.

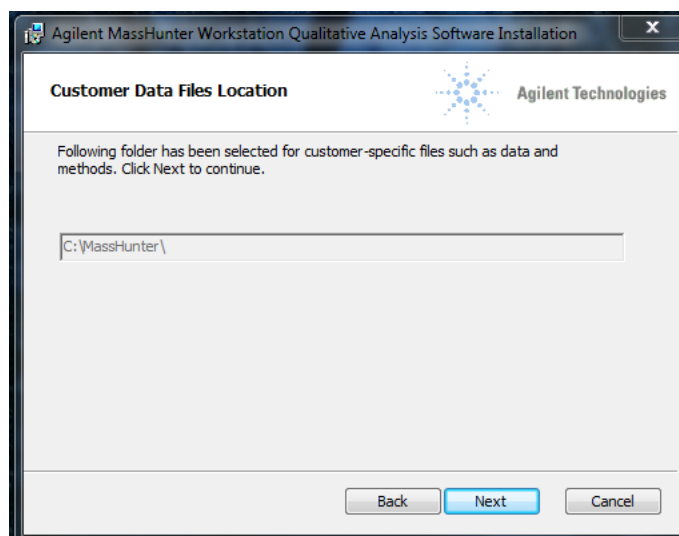


Step 2. Install the Qualitative Analysis Program

6. Use the default location for your software files or click **Browse** to choose a different location and click **Next**.

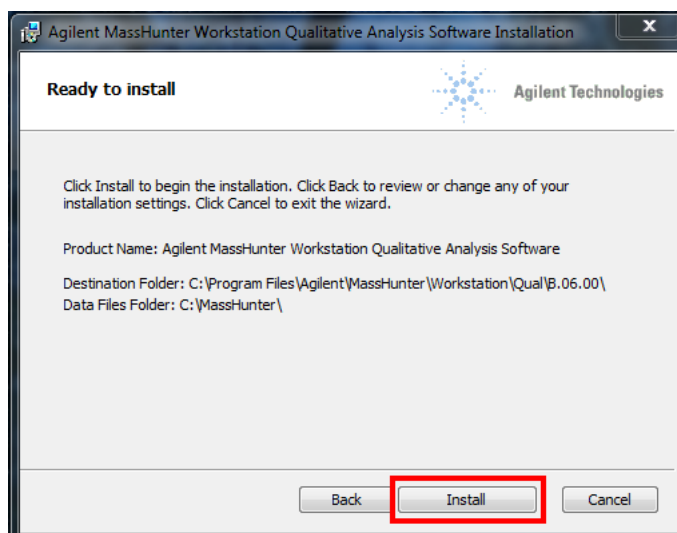


7. The location for your data file storage is displayed. Click **Next**.

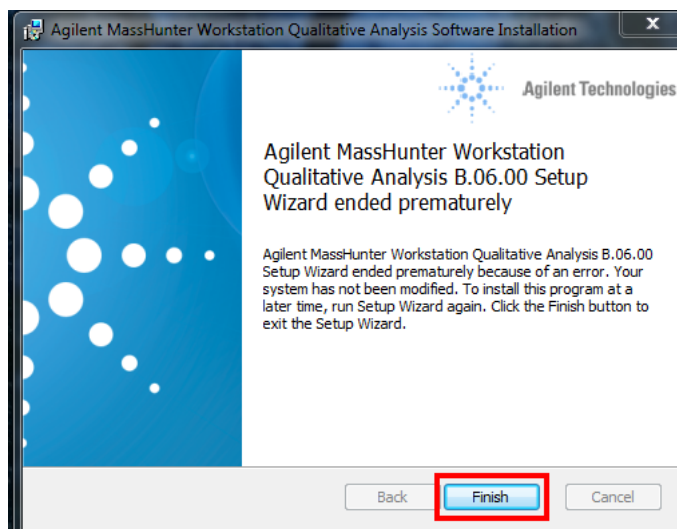


Step 2. Install the Qualitative Analysis Program

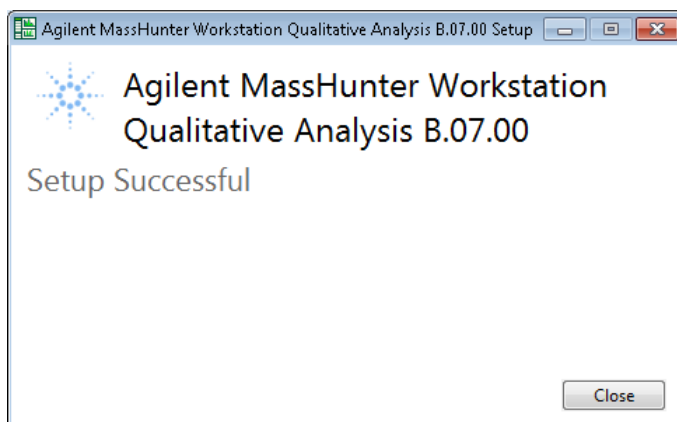
8. Review the installation information. Click **Install** to continue.



9. Click **Finish** to complete the installation.



10. Click **Close** to exit the program.

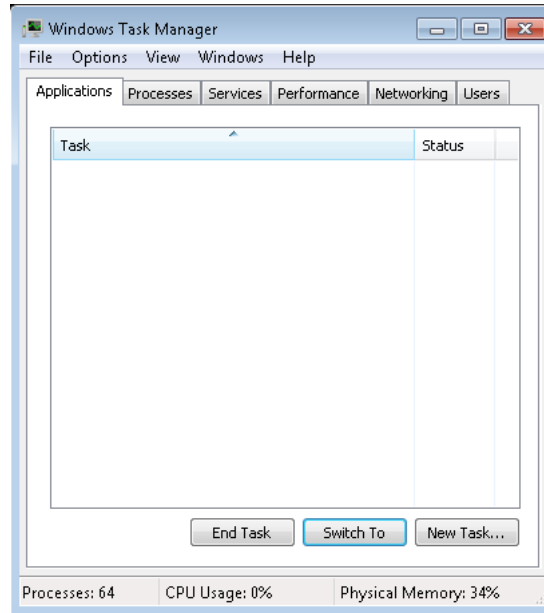


Step 3. Install the Quantitative Analysis Program

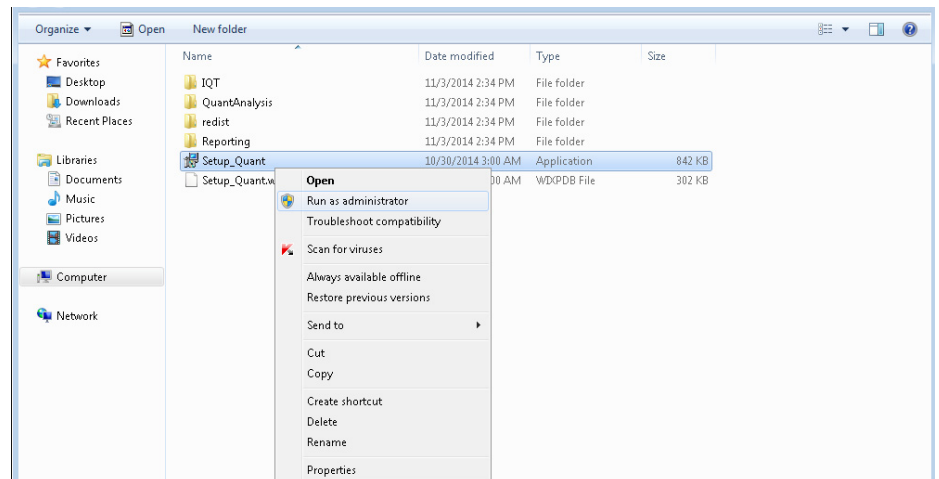
Step 3. Install the Quantitative Analysis Program

1. Verify that no other program is running on your system, including Windows Update.

Perform this step if you want to install or upgrade to Quantitative Analysis version B.08.00.

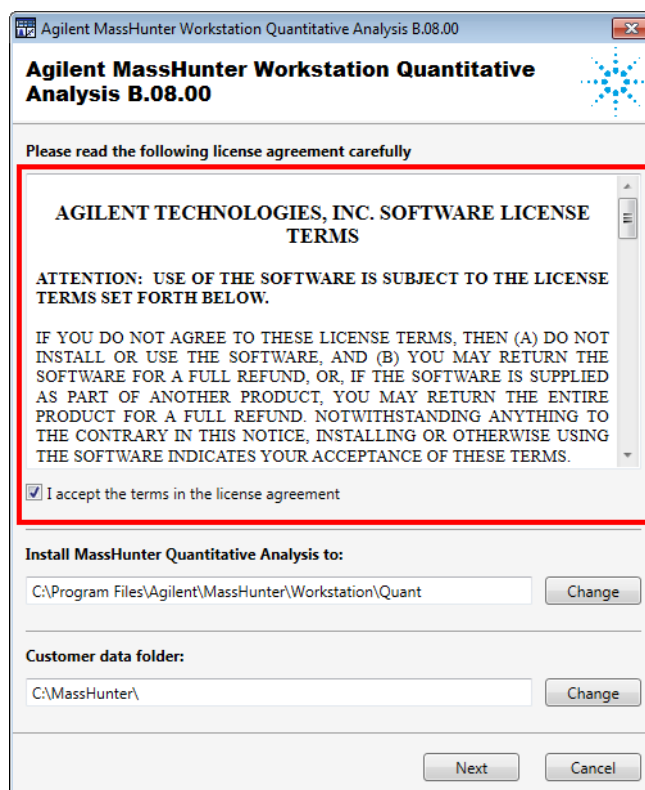


2. From the Quantitative Analysis Disk 1/2 installation DVD, right-click **Setup_Quant** and select **Run as administrator**.

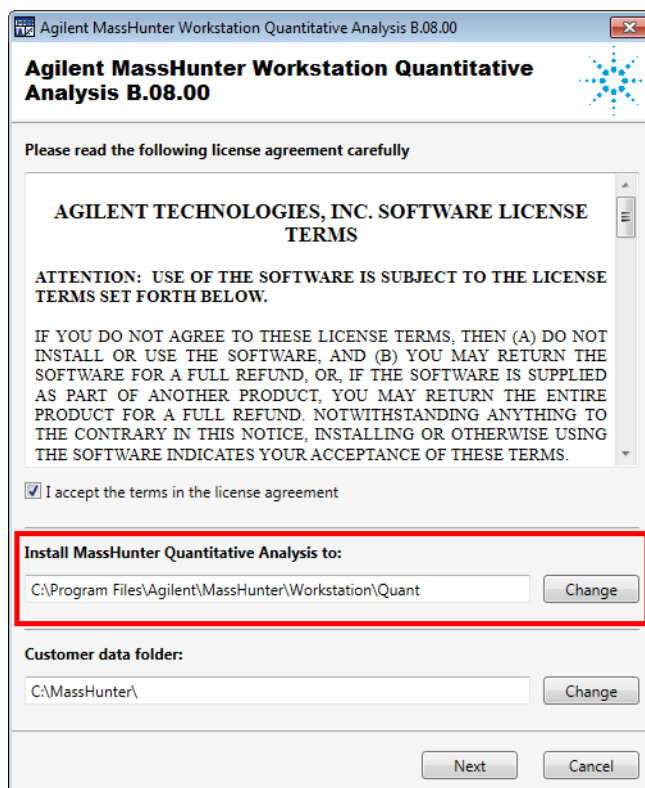


Step 3. Install the Quantitative Analysis Program

3. Review the License Agreement and accept the terms.



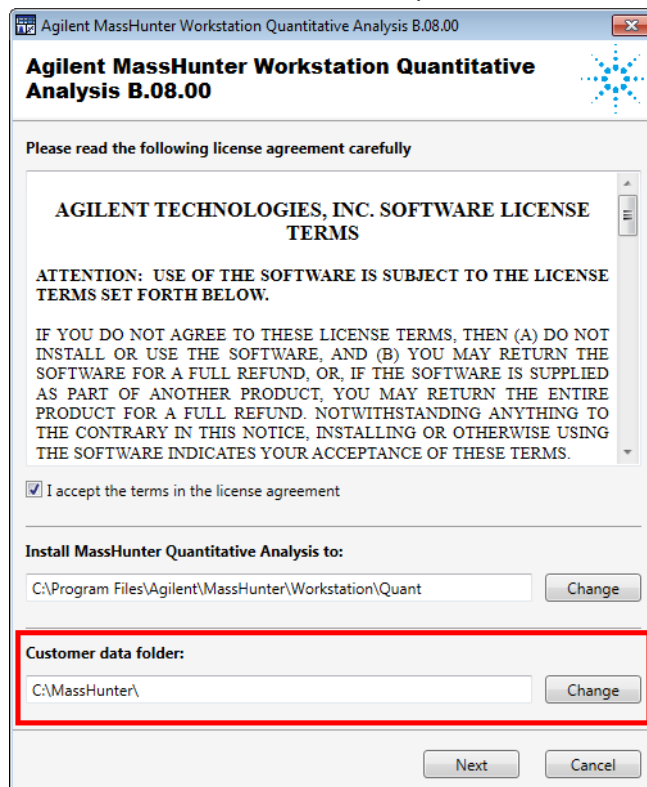
4. Install the program to the default location or click **Change** to choose a different location,



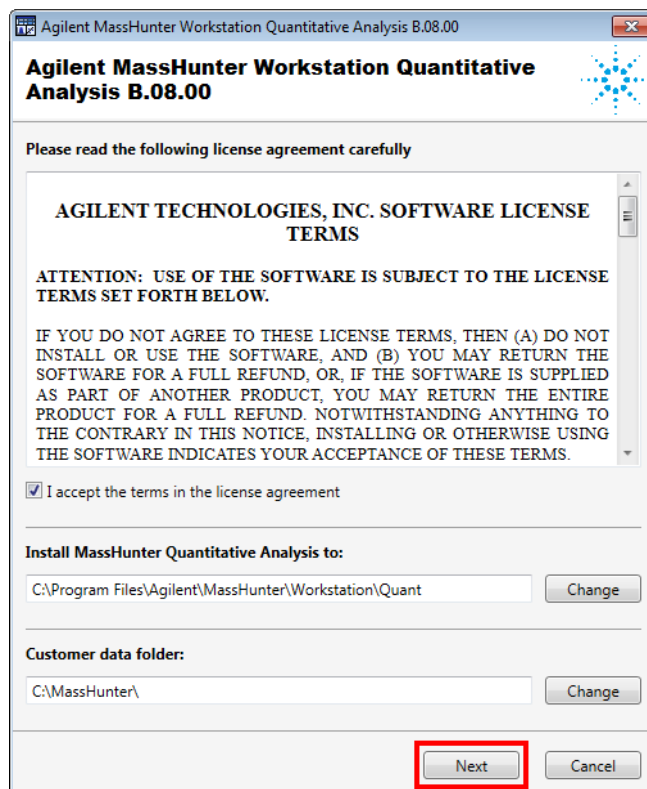
Step 3. Install the Quantitative Analysis Program

5. Create a data folder in the default location or, click **Change** to choose a different location,

Some default worklists and methods expect customer data to be in the default location.

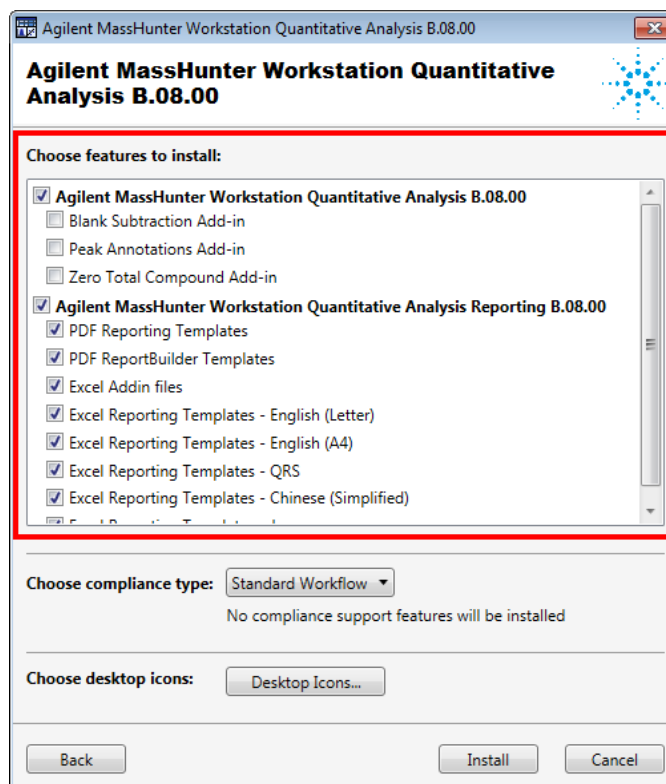


6. Click **Next** to continue.



Step 3. Install the Quantitative Analysis Program

7. Select the features to install.



Use Add-ins for additional features:

- **Blank Subtraction Add-in:** This add-in allows subtraction of the 'Blank' and/or 'DoubleBlank' sample final concentration and places the blank-subtracted concentrations into the target compound Custom Calculation column of the batch table. If a batch contains multiple 'Blank' and/or 'DoubleBlank' samples, the average blank concentration is used.
- **Peak Annotations Add-in:** In the Quantitative Analysis program, this add-in allows you to add an abbreviation to the batch table that indicates the reason for manually integrating target or ISTD compounds.
- **Zero Total Compound Add-in:** In the Quantitative Analysis program, this add-in allows you to zero the peaks for all compounds in a group.

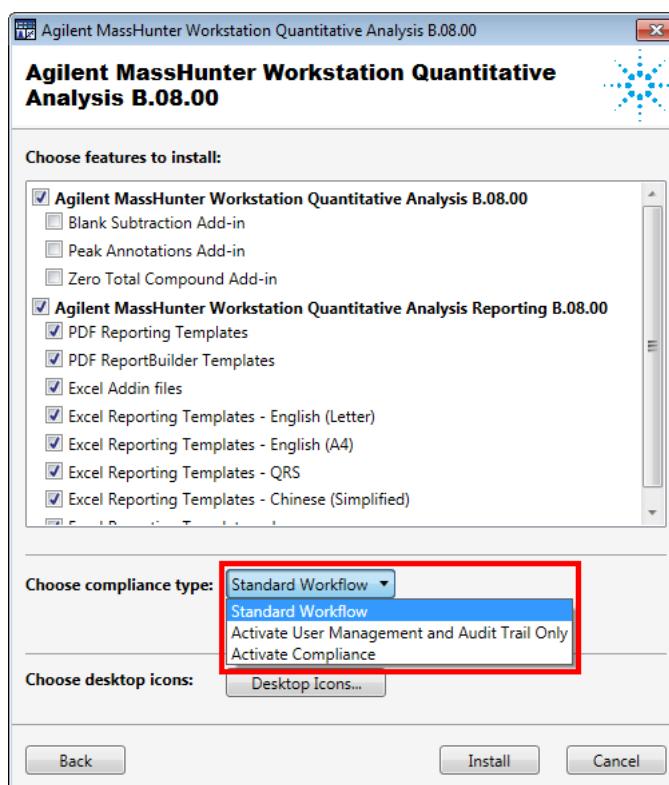
The reporting templates are installed on the local hard drive with the program to MassHunter/Report Templates/Quant/. If you plan to use MassHunter Compliance, these templates must be uploaded to ECM before they can be accessed from the Quantitative Analysis program.

Step 3. Install the Quantitative Analysis Program

8. Choose the compliance type:
Standard Workflow, Activate User Management and Audit Trail Only, or Activate Compliance.

Compliance types are as follows:

- Standard Workflow: Installs none of the compliance features described below.
- Activate User Management and Audit Trail Only: Installs the Audit Trail Map (ATM) program, which includes security measures that ensure the integrity of analysis and report results, comprehensive audit-trail features for quantitative analysis, and customizable user roles and groups that allow an administrator to individualize user access to processing tasks.
- Activate Compliance: Installs the Quantitative Analysis program and the ATM program that are specifically designed to use OpenLAB ECM for the compliant management of data and reports that are generated by the program. OpenLAB ECM must already be installed before you can install this compliance type.

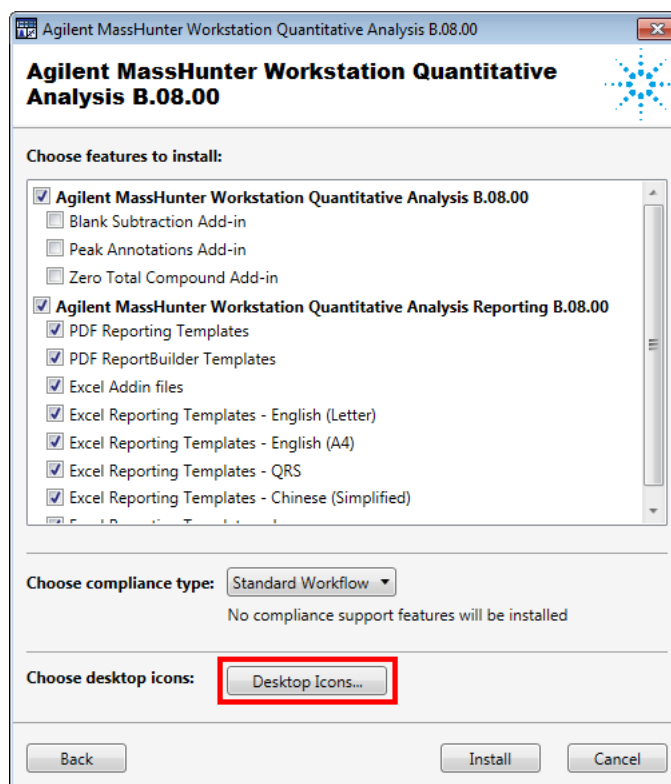


To change your compliance type after installation, go to your **Windows Control Panel > Programs and Features** and select the program in the list.

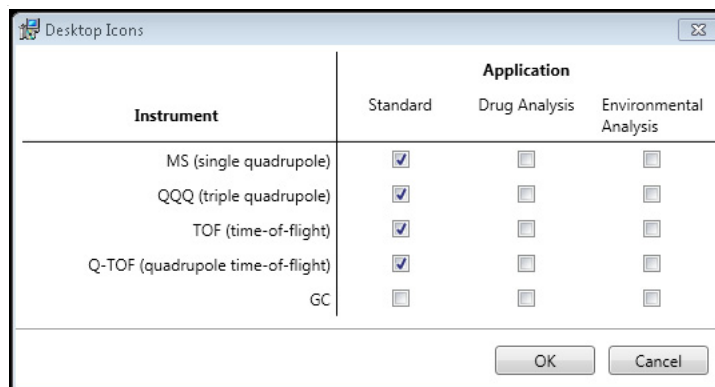
- To change from **Standard Workflow**, use the **Change** option.
- To change from **Activate User Management and Audit Trail Only** or **Activate Compliance** installations, use the **Uninstall** option. Then rerun the installer and make your selection.

Step 3. Install the Quantitative Analysis Program

9. Click **Desktop Icons**.



10. Select which shortcut icons you would like to appear on your desktop. Click **OK** to continue.

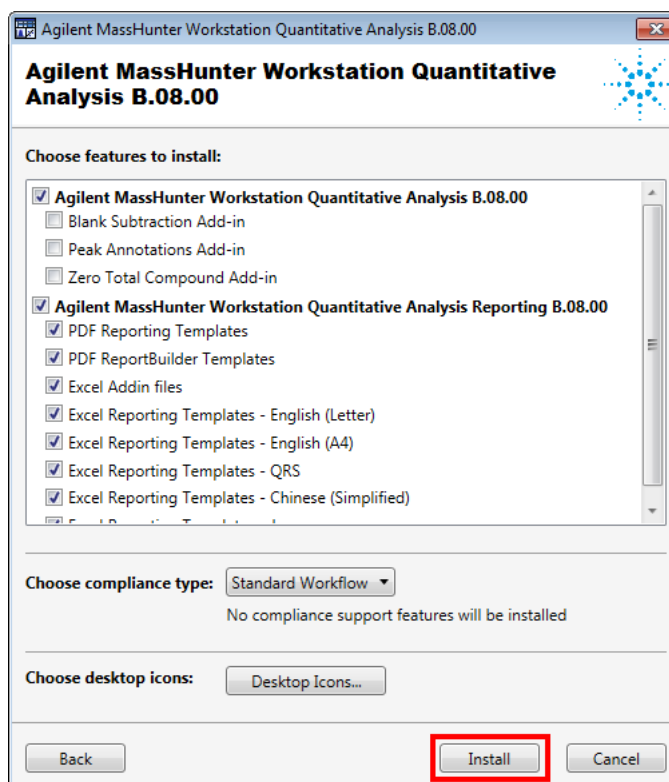


After installation, you can change which icons are displayed by selecting **Start > All Programs > Agilent > MassHunter Workstation > Quant Tools > Setup Desktop Icons**.

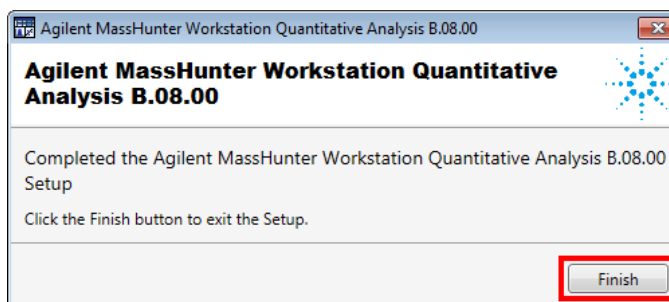
Select the **GC** Instrument for a simplified user interface, showing only GC signals or TIC signals. The GC option does not display the MS spectra, providing a simpler quantitation presentation.

Step 3. Install the Quantitative Analysis Program

11. Use **Back** to review your settings, or click **Install** to continue. Installation may take a few minutes.



12. Click **Finish**.



13. If the Service Packs folder exists on the installation DVD:
14. Open the Service Packs folder. If the folder contains another folder, such as SP1, open that folder.
15. Double-click the installation file, ending with **SPx.msi**.
16. Follow the instructions to install the service pack.

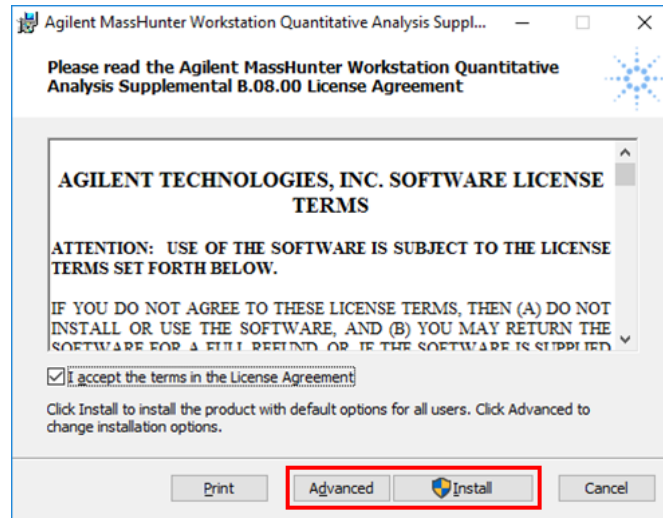
Step 4. Install Quantitative Analysis Supplemental Items

Step 4. Install Quantitative Analysis Supplemental Items

1. From the Quantitative Analysis Disk 2/3 installation DVD, right-click **Supplemental.msi**, and select **Install**.
2. Review the terms and choose **I accept the terms of the license agreement**.
3. Click **Advanced** or **Install**.

Do this step if you want to copy the supplemental manuals, report template index, technical videos, and data to your computer from the installation DVD.

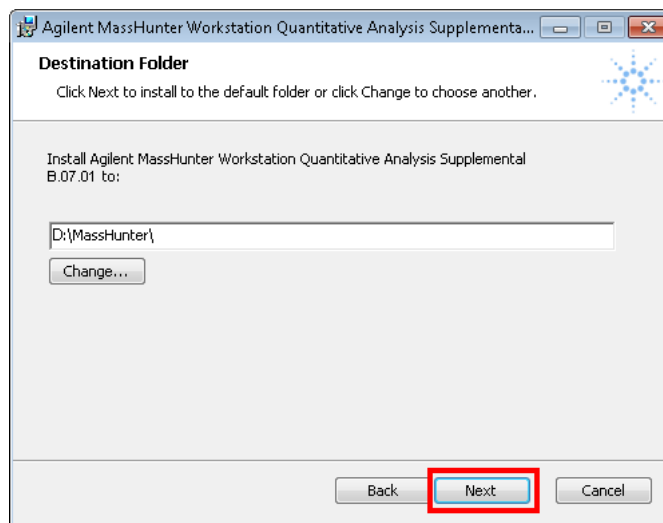
If **Windows User Account Control** asks for permission before continuing with the installation, click **Continue** or **Yes**.



Click **Install** to continue the installation using the default options for all users.

Click **Advanced** to change the installation options.

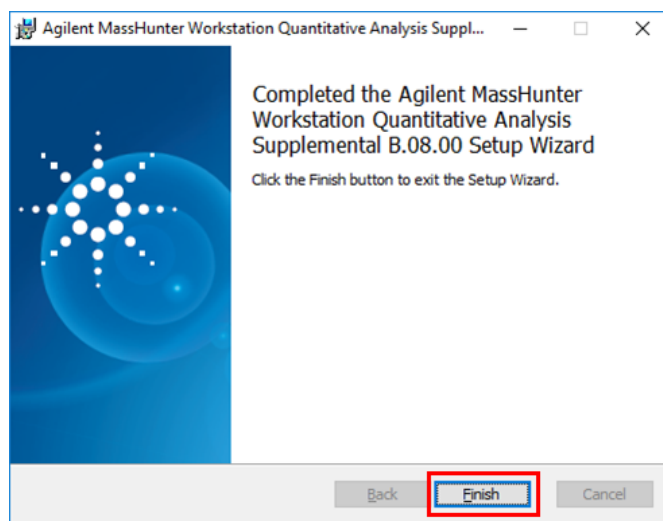
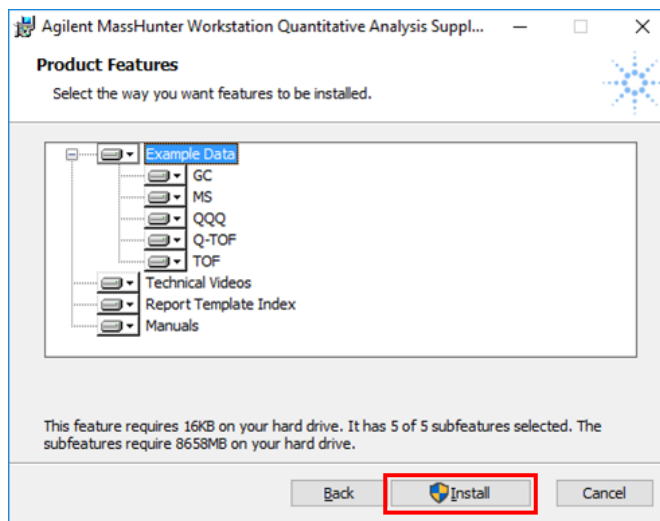
- a In the **Destination Folder** page, the default location is **D:\MassHunter**. Click **Change** to choose a different location for the supplemental items. Click **Next** when the location is set.



Step 4. Install Quantitative Analysis Supplemental Items

4. When prompted, remove DVD 2/3, insert DVD 3/3, and click **OK**.
5. Click **Finish**.

- b In the **Product Features** page, select the way you want to install each feature.
- c Click **Install**.



To view the supplemental materials, click **Start > All Programs > Agilent > MassHunter Workstation > Quant Supplemental**.

Step 5. Configure Excel for MassHunter

Click **Start > Control Panel > Programs and Features**.

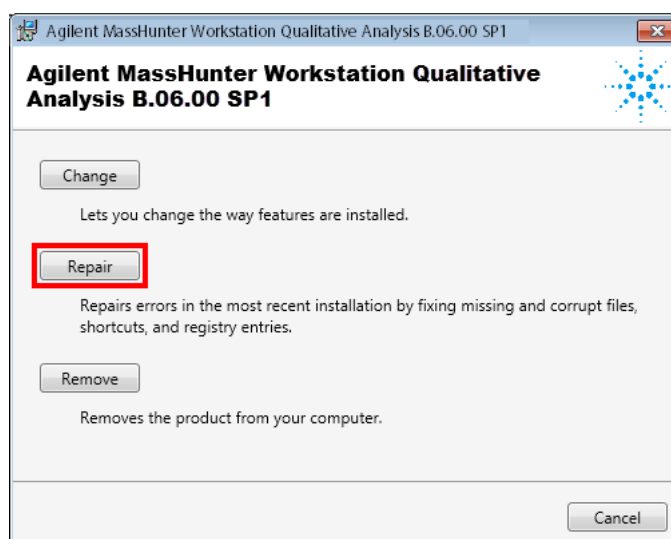
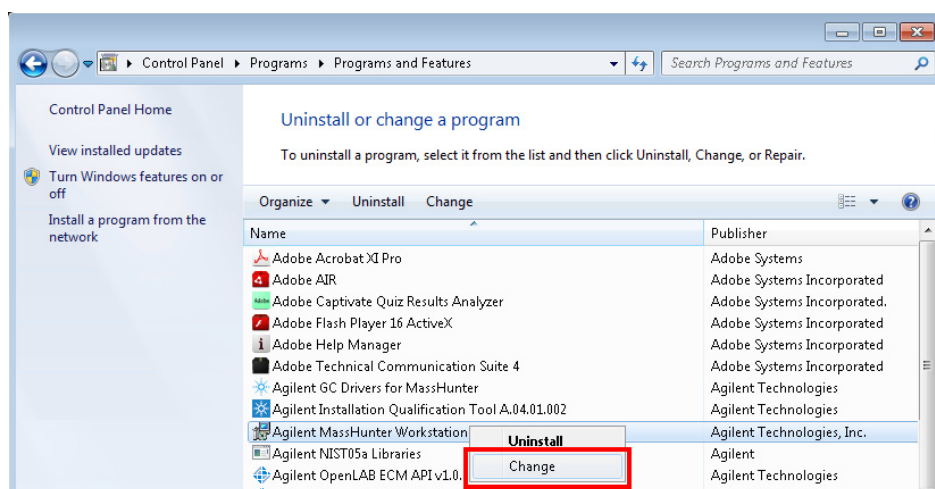
Configure Excel for Qualitative Analysis

1. Right-click **Agilent MassHunter Workstation Qualitative Analysis**, and select **Change**.

2. Click **Repair**.

3. Follow the instructions to complete the process.

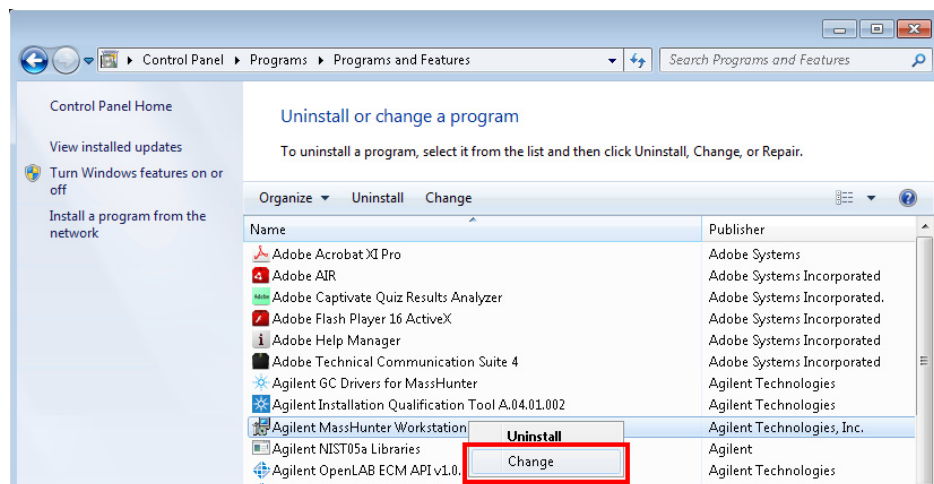
Do this step only if Microsoft Excel was upgraded after the Qualitative Analysis or Quantitative Analysis was installed or upgraded.



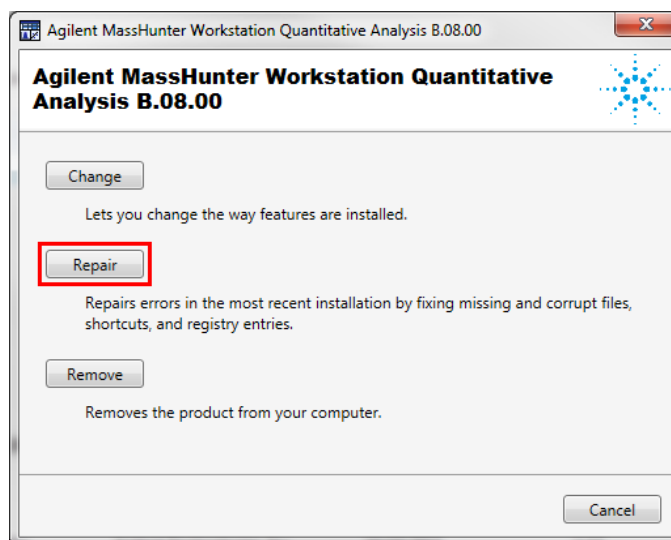
Step 5. Configure Excel for MassHunter

Configure Excel for Quantitative Analysis

1. Right-click **Agilent MassHunter Workstation Quantitative Analysis**, and select **Change**.



2. Click **Repair**.



3. Follow the instructions to complete the process.



© Agilent Technologies, Inc.

Printed in USA, September 2016

G3335-90215

