



# Agilent MassHunter Workstation Software for TOF and Q-TOF LC/MS

## Upgrade Guide

- Step 1. Prepare for installation 2
- Step 2. Install Excel 3
- Step 3. Install the Acquisition program 3
- Step 4. Install the Qualitative Analysis program 4
- Step 5. Install the Quantitative Analysis program 4
- Step 6. Install Service Packs for Data Acquisition (if needed) 5
- Step 7. Install Compliance programs 5
- Step 8. Install Quantitative Analysis Reports 5
- Step 9. Configure Excel 6
- Step 10. Confirm and update the LC firmware 7
- Step 11. Finish the installation 8
- Step 12. Configure the instrument 9

Use this guide to upgrade an online MassHunter Data Acquisition Workstation to B.06.01 or higher.

Before you begin, make sure you have a copy of the *Offline Qualitative and Quantitative Analysis Installation Guide* on hand.

### CAUTION

MassHunter and Excel software must be installed and set up in the order described in this guide, or the printing of reports can fail.



Agilent Technologies

## Step 1. Prepare for installation

- 1 Use the **Uninstall or change a programs** command in Control Panel to remove programs that you will be upgrading. *Do not remove programs for which you need only to install a service pack.*
  - Microsoft Excel, if you need to upgrade. Only Excel 2013, either as a standalone program or as part of the Office 2013 suite, is supported.
  - Agilent MassHunter Workstation Qualitative Analysis
  - Agilent MassHunter Workstation Quantitative Analysis
  - Agilent MassHunter Workstation Quantitative Analysis Reporting
  - Agilent MassHunter Workstation Quantitative Analysis Compliance

### NOTE

*Remove only the programs that you plan to upgrade at this time. Do not remove the Agilent MassHunter Workstation Data Acquisition or the MassHunter Optimizer program at this time.*

---

- 2 Back up the data, method and worklist files in the **D:\MassHunter** folder. Use the back-up method of your choice. You can create the folder **D:\MassHunter\_Archive** to store the files that you want to back up.

The uninstallation program keeps your data, method and worklist files. It also backs up your tuning and hardware setting files, which are restored during installation. Do not move, remove or rename the D:\MassHunter folder, or your tuning and hardware settings will not be saved.

- 3 Run Windows Update to make sure you have the latest critical updates and security fixes.

Make sure Windows Update is completed before you continue.

### CAUTION

If you do not run Windows Update, your system may be vulnerable to security problems. Confirm that the LAN power management has not been activated by a Windows Update program.

---

## Step 2. Install Excel

Do this step only if you need to upgrade Excel.

- Refer to the *Offline Qualitative and Quantitative Analysis Installation Guide* to install and configure Excel.

Do not install any other MassHunter program until instructed to do so.

## Step 3. Install the Acquisition program

**1** Check that no other program is running on your system, including Windows Update.

**2** Put the Data Acquisition installation disc into the disc drive.

The welcome page appears.

**3** Click **Uninstall MassHunter Data Acquisition Software**, and then follow the instructions on the page to remove the current program.

**4** Click **Install Microsoft .NET 4.5**.

**5** Click **Install MassHunter Data Acquisition Software**, and then follow the instructions to install the software.

- In the License Agreement page, click **I accept the terms in the License Agreement**, and then click **Next**.
- In the **Choose destination location** page, click **Next** to accept the default destination location.

The default is **C:\Program Files (x86)\Agilent\MassHunter\Workstation\Acq.**

- In the **Ready to install** page, click **Install**.

The Setup Status page now appears.

- If you are asked to allow Agilent Technologies to install software on the computer, click **Yes**.
- If you get a message that indicates that the screen resolution is *not* set to the required resolution, click **OK**.
- If you see a Notepad window that prompts you to install other options, close the Notepad window.
- When the installation completion message is displayed, click **Finish**.

**6** Click **Update MS Firmware**.

## Step 4. Install the Qualitative Analysis program

- 7 *Optional.* Click **Install MassHunter Data Acquisition Manuals** to copy the user guides to the location of your choice.

The installation program automatically copies the MassHunter user guides onto your computer so that they can be opened from online Help. The user guides are also available on the installation disc in the Manuals folder. Click this button only if you want an additional set of user guides copied to the location of your choice.

- 8 Click **Install Software Verification Tool** if you need to qualify the installation.
- 9 If your system includes an Agilent 1290 Infinity LC Injector HTC/HTS, click **Install HTC/HTS Driver**.

## Step 4. Install the Qualitative Analysis program

Do this step only if you are upgrading the Qualitative Analysis program at this time.

- Refer to the *Offline Qualitative and Quantitative Analysis Installation Guide* to install the Qualitative Analysis program.

Do not install any other MassHunter program until instructed to do so.

## Step 5. Install the Quantitative Analysis program

Do this step only if you are upgrading the Quantitative Analysis program at this time.

- Refer to the *Offline Qualitative and Quantitative Analysis Installation Guide* to install the Quantitative Analysis program.

Do not install any other MassHunter program until instructed to do so.

## Step 6. Install Service Packs for Data Acquisition (if needed)

- 1 Put the Data Acquisition installation disc into the disc drive.  
If you received a separate Service Pack installation disc, insert that disc instead.
- 2 If the folder **Service Packs** exists on the installation disc, then:
  - a Open the **Service Packs** folder. If the folder contains another folder, such as **SP1**, open that folder.
  - b Locate the installation file, which ends with **SP x.exe**.
  - c Right-click the installation file and select **Run as administrator**.
  - d Follow the instructions to install the service pack.

## Step 7. Install Compliance programs

Do these steps if you need to enable compliance. You must install the MassHunter Data Acquisition program before you install the MassHunter Quantitative Analysis Compliance program.

- 1 Install the Quantitative Compliance program:  
Refer to the *Offline Qualitative and Quantitative Analysis Installation Guide* to install the Quantitative Compliance program.
- 2 Enable Compliance for the Data Acquisition program.  
Refer to the *MassHunter Quantitative Analysis Compliance Software Quick Start Guide* for details.

The compliance programs are installed and enabled.

## Step 8. Install Quantitative Analysis Reports

Do this step only if you need to upgrade Quantitative Analysis Reporting.

- Refer to the *Offline Qualitative and Quantitative Analysis Installation Guide* to install the Quantitative Analysis program.

Do not install any other MassHunter program until instructed to do so.

## Step 9. Configure Excel

Do this step only if Excel was upgraded after the Qualitative Analysis or Quantitative Analysis was installed or upgraded.

- 1** Click **Start > Control Panel > Programs and Features**.
- 2** If you need to configure Excel for Qualitative Analysis:
  - a** Right-click **Agilent MassHunter Workstation Qualitative Analysis**.
  - b** Click **Change**, and then click **Repair**.
  - c** Follow the instructions to complete the process.
- 3** If you need to configure Excel for Quantitative Analysis:
  - a** Right-click **Agilent MassHunter Workstation Quantitative Analysis**.
  - b** Click **Change**, and then click **Repair**.
  - c** Follow the instructions to complete the process.

## Step 10. Confirm and update the LC firmware

- 1 Start the Data Acquisition program.
- 2 Click **File > Print > Instrument Configuration Report**.
- 3 Click **Screen**.
- 4 Click **OK**.
- 5 Go to [http://www.chem.agilent.com/\\_layouts/agilent/downloadFirmware.aspx?wid=69761](http://www.chem.agilent.com/_layouts/agilent/downloadFirmware.aspx?wid=69761) and check that you have the most recent firmware for your instrument.
- 6 If you need to update your LC firmware, follow the instructions on the web site. Make sure you use the latest firmware update tool, as instructed on the web site.
- 7 Check that the firmware for the G1369A Agilent LAN Interface card is the latest version available:
  - a Start a Command Prompt in Windows.
  - b Type `telnet 192.168.254.11` in the Command Prompt window and press **Enter**.
  - c Type `/` in the Telnet window.

The LAN Interface card displays its current configuration information.

The LAN Interface card requires 1.10 firmware or higher. If an upgrade is needed, please contact your Agilent representative.

## Step 11. Finish the installation

- 1 If this is an upgrade installation, copy or move the files that you backed up at the beginning of the upgrade process.

If you backed up the files to **D:\MassHunter\_Archive**, copy the files to the **D:\MassHunter** folder.

- 2 Create a system recovery disc of your installed system.

Check with your IT department for the appropriate backup procedure.

- 3 Install or enable any other program that you will use with your MassHunter workstation. Refer to the installation guide or quick start guide for these programs.

- 4 Make sure that the trust settings in Excel are set for all MassHunter users, including the guest account that is set up for compliance. See the *Offline Qualitative and Quantitative Analysis Installation Guide* for more information.

- 5 Install or enable any other program that you will use with your MassHunter Workstation. Refer to the installation guide or quick start guide for these programs.

## Step 12. Configure the instrument

If available, configure the device from the Device Configuration tool in the Data Acquisition program. Go to **Tools > Device Config**.

Some HPLC instrument setups can be configured only through the Device Configuration tool from the Data Acquisition program. The Capillary Pump and the Nano pump with the Chip Cube are examples.

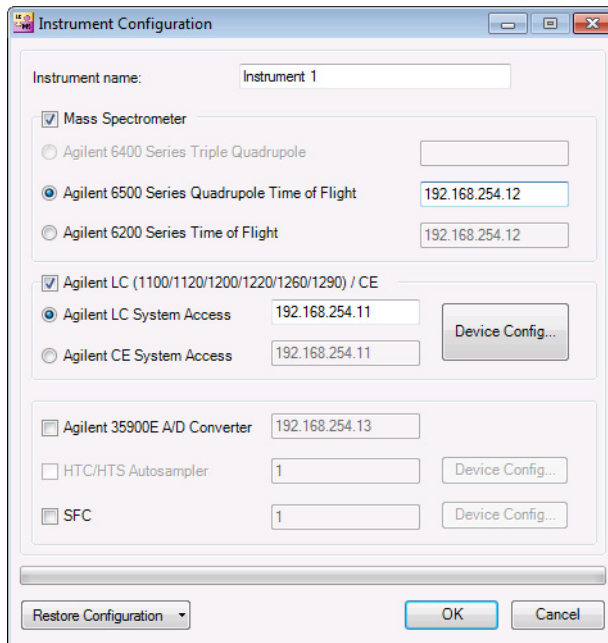
In this step, you configure the TOF or Q-TOF instrument and the HPLC instrument.

- 1** Open the **Agilent MassHunter** folder on the desktop, and then double-click **Acq Tools**.
- 2** Double-click the **Instrument Configuration** tool.
- 3** In the Instrument Configuration dialog box:
  - a** If you want to change the name of the instrument, type a new name for **Instrument Name**.
  - b** Mark the **Mass Spectrometer** check box.
  - c** Click the option for your LC/MS instrument.
  - d** Mark the check box for the **Agilent LC/CE** option.
  - e** Click **Agilent LC System Access**.
  - f** Click **Device Config** and configure the LC system.
  - g** Mark the check box for any other LC modules that you have. For HTC/HTS Autosampler, type in a COM port or IP address. For SFC, type in the COM port.

To find the COM port that is used by the SFC module, right-click the computer icon on your desktop, click **Start > Control Panel > Device Manager**, and expand the **Ports (COM & LPT)** node.

- h** If needed, next to **HTC/HTS Autosampler** or **SFC**, click **Configure Device** and configure the device.
- i** Click **OK**.

## Step 12. Configure the instrument



**Figure 1** Instrument Configuration Dialog Box

- 4 When configuration is completed, click **OK**.
- 5 If your system includes an Agilent 1290 Infinity LC Injector HTC/HTS, and you want to use cycles that were created in a previous version of MassHunter Workstation:
  - a Open the Data Acquisition program.
  - b Set the **Context** to **Acquisition**.
  - c Under **HTC/HTS**, right-click the module image.
  - d Click either **Import Cycle** or **Open FSE**, depending on whether an FSE license is registered on your system.
  - e If you see the FSE dialog box, then from under **PAL Cycle List**, select **PAL Cycles**.
  - f Select the HTC/HTS cycles to import from the Import Cycle dialog box. Click **OK**.

## Step 12. Configure the instrument

**www.agilent.com**

## **In This Book**

This book contains installation instructions to upgrade Agilent MassHunter Workstation Software for TOF and Q-TOF LC/MS Systems.

This guide supports Agilent MassHunter Workstation Software for TOF and Q-TOF LC/MS B.06.01 and later, until superseded.

Microsoft®, Windows®, and Excel® are registered trademarks of Microsoft Corporation in the US and/or other countries.

© Agilent Technologies, Inc. 2014

Printed in USA  
Revision A, December 2014



G3335-90177



**Agilent Technologies**