

# RNA 6000 Pico Kit for 2100 Bioanalyzer Systems

## Kit Guide

*For Research Use Only - Not for use in diagnostic procedures*



# Notices

## Document Information

Document No: SD-UF0000074  
Rev. E.00  
Edition: 09/2023

## Copyright

© Agilent Technologies, Inc. 2000-2023

No part of this manual may be reproduced in any form or by any means (including electronic storage and retrieval or translation into a foreign language) without prior agreement and written consent from Agilent Technologies, Inc. as governed by United States and international copyright laws.

## Warranty

The material contained in this document is provided "as is," and is subject to being changed, without notice, in future editions. Further, to the maximum extent permitted by applicable law, Agilent disclaims all warranties, either express or implied, with regard to this manual and any information contained herein, including but not limited to the implied warranties of merchantability and fitness for a particular purpose. Agilent shall not be liable for errors or for incidental or consequential damages in connection with the furnishing, use, or performance of this document or of any information contained herein. Should Agilent and the user have a separate written agreement with warranty terms covering the material in this document that conflict with these terms, the warranty terms in the separate agreement shall control.

## Technology Licenses

The hardware and/or software described in this document are furnished under a license and may be used or copied only in accordance with the terms of such license.

## Restricted Rights Legend

U.S. Government Restricted Rights. Software and technical data rights granted to the federal government include only those rights customarily provided to end user customers. Agilent provides this customary commercial license in Software and technical data pursuant to FAR 12.211 (Technical Data) and 12.212 (Computer Software) and, for the Department of Defense, DFARS 252.227-7015 (Technical Data - Commercial Items) and DFARS 227.7202-3 (Rights in Commercial Computer Software or Computer Software Documentation).

## Safety Notices

### CAUTION

A **CAUTION** notice denotes a hazard. It calls attention to an operating procedure, practice, or the like that, if not correctly performed or adhered to, could result in damage to the product or loss of important data. Do not proceed beyond a **CAUTION** notice until the indicated conditions are fully understood and met.

### WARNING

A **WARNING** notice denotes a hazard. It calls attention to an operating procedure, practice, or the like that, if not correctly performed or adhered to, could result in personal injury or death. Do not proceed beyond a **WARNING** notice until the indicated conditions are fully understood and met.

# Contents

<b>1</b>	<b>RNA 6000 Pico Kit</b>	<b>4</b>
<b>2</b>	<b>Required Equipment for RNA 6000 Pico Assay</b>	<b>6</b>
	Equipment Supplied with the Agilent 2100 Bioanalyzer System	6
	Additional Material Required (Not Supplied)	6
<b>3</b>	<b>Setting up the Assay Equipment and Bioanalyzer</b>	<b>7</b>
	Setting up the Assay Equipment and Bioanalyzer	7
	Setting up the Chip Priming Station	8
	Setting up the Bioanalyzer	9
	Vortex Mixer	9
	Starting the 2100 Expert Software	10
<b>4</b>	<b>Essential Measurement Practices</b>	<b>11</b>
<b>5</b>	<b>Preparing the RNA Ladder after Arrival</b>	<b>12</b>
<b>6</b>	<b>RNA 6000 Pico Assay Protocol</b>	<b>13</b>
	RNA 6000 Pico Assay Protocol	13
	Cleaning the Electrodes before Running Assays	13
	Preparing the Gel	14
	Preparing the Gel-Dye Mix	15
	Loading the Gel-Dye Mix	16
	Loading the RNA 6000 Pico Conditioning Solution and Marker	17
	Loading the Diluted Ladder and Samples	18
	Inserting a Chip in the 2100 Bioanalyzer Instrument	19
	Starting the Chip Run	20
	Cleaning Electrodes after a RNA 6000 Pico Chip Run	22
	Decontaminating the Electrodes	23
<b>7</b>	<b>Checking Your RNA 6000 Pico Assay Results</b>	<b>24</b>
	RNA 6000 Pico Ladder Well Results	24
	RNA 6000 Pico Sample Well Results	25



# 1 RNA 6000 Pico Kit

Agilent RNA 6000 Pico Kit (5067-1513)	
Agilent RNA 6000 Pico Chips	Agilent RNA 6000 Pico Reagents (5067-1514) & Supplies
25 RNA Pico Chips	● (blue) RNA 6000 Pico Dye Concentrate (1 vial)
3 Electrode Cleaners	● (green) RNA 6000 Pico Marker (4 vials)
	○ (white) RNA 6000 Pico Conditioning Solution
Syringe Kit	● (red) RNA 6000 Pico Gel Matrix (2 vials)
1 Syringe	● (yellow) RNA 6000 Pico Ladder (5067-1535) (1 vial, 10x concentrate)
	4 Spin Filters (5185-5990)
Tubes for Gel-Dye Mix	
30 Safe-Lock Eppendorf Tubes PCR clean (DNase/RNase free) for gel-dye mix	

**Table 1     Physical Specifications**

Type	Specification
Analysis time	30 min
Samples per chip	11
Sample volume	1 µL
Kit stability	4 months
Kit size	25 chips 11 samples/chip = 275 samples/kit

**Table 2     Analytical Specifications**

Specification	Total RNA Assay	mRNA Assay
Qualitative range	50 – 5000 pg/µL in water	250 – 5000 pg/µL in water
Sensitivity (S/N>3)	50 pg/µL in water or 200 pg/µL in TE	250 pg/µL in water or 500 pg/µL in TE
Quantitative precision (within a chip)	20 % CV	20 % CV
Quantitative accuracy	30 %	-
Maximum buffer concentration in sample	50 mM Tris 0.1 mM EDTA or 50 mM NaCl 15 mM MgCl <sub>2</sub>	50 mM Tris 0.1 mM EDTA or 50 mM NaCl 15 mM MgCl <sub>2</sub>

## 2

## Required Equipment for RNA 6000 Pico Assay

### Equipment Supplied with the Agilent 2100 Bioanalyzer System

- Chip priming station (5065-4401)
- IKA vortex mixer

### Additional Material Required (Not Supplied)

- RNaseZAP® recommended for electrode decontamination
- RNase-free water
- Pipettes (10 µL and 1000 µL) with compatible tips (RNase-free, no filter tips, no autoclaved tips)
- 0.5 mL microcentrifuge tubes (RNase-free). Eppendorf Safe-lock PCR clean or Eppendorf DNA LoBind microcentrifuge tubes are highly recommended.
- Microcentrifuge ( $\geq 13000$  g)
- Heating block or water bath for ladder/sample preparation
- Mandatory: bayonet electrode cartridge (5065-4413)

### Further Information

Visit the Agilent website. It offers useful information, support, and current developments about the products and technology:

[www.agilent.com/en/product/automated-electrophoresis/bioanalyzer-systems](http://www.agilent.com/en/product/automated-electrophoresis/bioanalyzer-systems).

### 3

## Setting up the Assay Equipment and Bioanalyzer

Before beginning the chip preparation protocol, ensure that the chip priming station and the Bioanalyzer are set up and ready to use.

You have to

- replace the syringe at the chip priming station with each new kit
- adjust the base plate of the chip priming station
- adjust the syringe clip at the chip priming station
- set up the vortex mixer
- finally, make sure that you start the software before you load the chip.

#### NOTE

Please read this guide carefully and follow all instructions to guarantee satisfactory results.

## Setting up the Chip Priming Station

### NOTE

Replace the syringe with each new reagent kit.

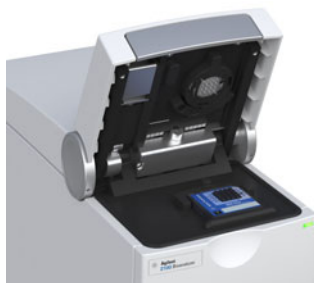
- 1 Replace the syringe:
  - a Unscrew the old syringe from the lid of the chip priming station.
  - b Release the old syringe from the clip. Discard the old syringe.
  - c Remove the plastic cap of the new syringe and insert it into the clip.
  - d Slide it into the hole of the luer lock adapter and screw it tightly to the chip priming station.
- 2 Adjust the base plate:
  - a Open the chip priming station by pulling the latch.
  - b Using a screwdriver, open the screw at the underside of the base plate.
  - c Lift the base plate and insert it again in position C. Retighten the screw.
- 3 Adjust the syringe clip:
  - a Release the lever of the clip and slide it up to the top position.





## Setting up the Bioanalyzer

- 1 Open the lid of the Bioanalyzer and make sure that the electrode cartridge is inserted in the instrument. If not, open the latch and insert the electrode cartridge.



**Figure 1** Electrode cartridge inserted in the instrument (graphic shows an example).

- 2 Remove any remaining chip.

## Vortex Mixer

IKA - Model MS3

- 1 To set up the vortex mixer, adjust the speed knob to 2400 rpm.



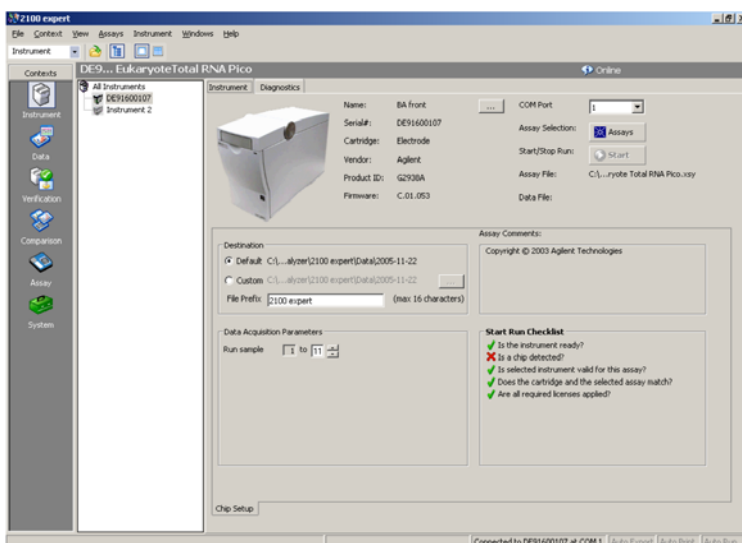
## Starting the 2100 Expert Software

To start the software:

- 1 Go to your desktop and double-click the following icon.



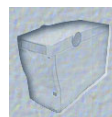
The screen of the software appears in the **Instrument** context. The icon in the upper part of the screen represents the current instrument/PC communication status:



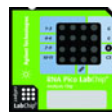
Lid closed, no chip or chip empty



Lid open



Dimmed icon: no communication



Lid closed, chip inserted, RNA or demo assay selected

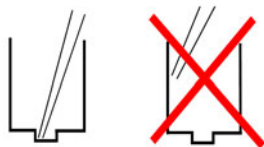
- 2 If more than one instrument is connected to your PC, select the instrument you want to use in the tree view.



## 4

## Essential Measurement Practices

- Handle and store all reagents according to the instructions on the label of the individual box.
- Avoid sources of dust or other contaminants. Foreign matter in reagents and samples or in the wells of the chip will interfere with assay results.
- Allow all reagents to equilibrate to room temperature for 30 min before use. Thaw samples on ice.
- Protect dye and dye mixtures from light. Remove light covers only when pipetting. The dye decomposes when exposed to light and this reduces the signal intensity.
- Always insert the pipette tip to the bottom of the well when dispensing the liquid. Placing the pipette at the edge of the well may lead to poor results.



- Always wear gloves when handling RNA and use RNase-free tips, microcentrifuge tubes and water.
- It is recommended to heat denature all RNA samples and RNA ladder before use for 2 min and 70 °C (once) and keep them on ice.
- Do not touch the 2100 Bioanalyzer instrument during analysis and never place it on vibrating surface.
- Always vortex the dye concentrate for 10 s before preparing the gel-dye mix and spin down afterwards.
- Use a new syringe and electrode cleaners with each new kit.
- Use loaded chips within 5 min after preparation. Reagents might evaporate, leading to poor results.
- To prevent contamination (e.g. RNase), it is strongly recommended to use a dedicated electrode cartridge for RNA assays.

## 5

# Preparing the RNA Ladder after Arrival

For proper handling of the ladder, following steps are necessary:

### CAUTION

**To avoid RNase contamination and repetitive freeze/thaw cycles, the RNA ladder must be aliquoted in RNase-free vials.**

- ✓ **Tests have shown that some plastic vial types can bind RNA on their surface. This can have an effect on RNA ladder concentration which affects the ladder identification and the quantitation of the sample. Eppendorf Safe-Lock PCR clean and Eppendorf DNA LoBind 0.5 mL Microcentrifuge tubes were successfully tested for RNA ladder aliquoting.**

### NOTE

- 1 After reagent kit arrival, spin ladder down. The ladder can be ordered separately (5067-1535).

In case that the ladder vial type is not compatible with your heating block, transfer the entire volume (10 µL) to a recommended RNase-free vial.

- 2 Heat denature the ladder for 2 min at 70 °C.
- 3 Immediately cool the vial on ice.
- 4 Add 90 µL of RNase-free water and mix thoroughly.
- 5 Prepare aliquots in recommended 0.5 mL RNase-free vials with the required amount for typical daily use.
- 6 Store aliquots at -28 – -15 °C (-18 – 5 °F). After initial heat denaturation, the frozen aliquots should not require repeated heat denaturation.
- 7 Before use, thaw ladder aliquots and keep them on ice (avoid extensive warming upon thawing process).

## 6

# RNA 6000 Pico Assay Protocol

## RNA 6000 Pico Assay Protocol

After completing the initial steps in “[Setting up the Assay Equipment and Bioanalyzer](#)” on page 7, you can prepare the assay, load the chip, and run the assay, as described in the following procedures.

### NOTE

If you use the RNA 6000 Pico kit for the first time, you must read these detailed instructions. If you have some experience, you might want to use the *RNA 6000 Pico Kit for 2100 Bioanalyzer Systems Quick Guide*.

## Cleaning the Electrodes before Running Assays

To avoid decomposition of your RNA sample, follow this electrode cleaning procedure on a daily basis before running any RNA Pico assays.

### NOTE

To prevent contamination problems, it is strongly recommended to use a dedicated electrode cartridge for RNA assays.

- 1 Slowly fill one of the wells of the electrode cleaner with 350  $\mu$ L of fresh RNase-free water.
- 2 Open the lid and place the electrode cleaner in the 2100 Bioanalyzer instrument.
- 3 Close the lid and leave it closed for 5 minutes.
- 4 Open the lid and remove the electrode cleaner. Label the electrode cleaner and keep it for future use.
- 5 Wait another 30 seconds to allow the water on the electrodes to evaporate before closing the lid.

## Preparing the Gel

- 1 Allow all reagents to equilibrate to room temperature for 30 minutes before use.
- 2 Place 550  $\mu\text{L}$  of RNA 6000 Pico gel matrix (red ●) into the top receptacle of a spin filter.

### NOTE

Always use RNase-free microcentrifuge tubes, pipette tips and water.

- 3 Place the spin filter in a microcentrifuge and spin for 10 minutes at  $1500\text{ g} \pm 20\%$  (for Eppendorf microcentrifuge, this corresponds to 4000 rpm).
- 4 Aliquot 65  $\mu\text{L}$  filtered gel into 0.5 mL RNase-free microcentrifuge tubes that are included in the kit. Store the aliquots at  $2 - 8\text{ }^{\circ}\text{C}$  ( $36 - 46\text{ }^{\circ}\text{F}$ ) and use them within one month of preparation.

## Preparing the Gel-Dye Mix

**WARNING****Handling Reagents**

The dye can cause serious eye irritation. Because the dye binds to nucleic acids, it should be treated as a potential mutagen.

Kit components contain DMSO. DMSO is skin-permeable and can elevate the permeability of other substances through the skin.

- ✓ Follow the appropriate safety procedures and wear personal protective equipment including protective gloves and clothes as well as eye protection.
- ✓ Follow good laboratory practices when preparing and handling reagents and samples.
- ✓ Always use reagents with appropriate care.
- ✓ For more information, refer to the material safety data sheet (MSDS) on [www.agilent.com](http://www.agilent.com).

- 1 Allow all reagents to equilibrate to room temperature for 30 minutes before use. Protect the dye concentrate from light while bringing it to room temperature.
- 2 Vortex RNA 6000 Pico dye concentrate (blue ●) for 10 seconds and spin down.
- 3 Add 1  $\mu\text{L}$  of RNA 6000 Pico dye concentrate (blue ●) to a 65  $\mu\text{L}$  aliquot of filtered gel (prepared as described in "Preparing the Gel" on page 14).
- 4 Cap the tube, vortex thoroughly and visually inspect proper mixing of gel and dye. Store the dye concentrate at 2 – 8 °C (36 – 46 °F) in the dark again.
- 5 Spin tube for 10 minutes at room temperature at 13000 g (for Eppendorf microcentrifuge, this corresponds to 14000 rpm). Use prepared gel-dye mix within one day.


**NOTE**

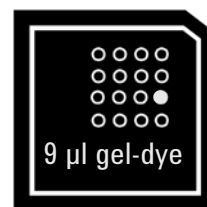
A larger volume of gel-dye mix can be prepared in multiples of the 65+1 ratio, if more than one chip will be used within one day. Always re-spin the gel-dye mix at 13000 g for 10 minutes before each use.

## Loading the Gel-Dye Mix

### NOTE

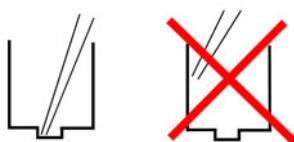
Before loading the gel-dye mix, make sure that the base plate of the chip priming station is in position (C) and the adjustable clip is set to the highest position. Refer to [“Setting up the Chip Priming Station”](#) on page 8 for details.

- 1 Allow the gel-dye mix to equilibrate to room temperature for 30 minutes before use. Protect the gel-dye mix from light during this time.
- 2 Take a new RNA chip out of its sealed bag.
- 3 Place the chip on the chip priming station.
- 4 Pipette 9.0  $\mu\text{L}$  of the gel-dye mix at the bottom of the well marked  and dispense the gel-dye mix.

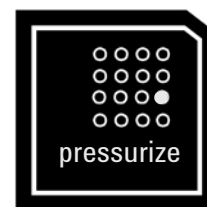


### NOTE

When pipetting the gel-dye mix, make sure not to draw up particles that may sit at the bottom of the gel-dye mix vial. Insert the tip of the pipette to the bottom of the chip well when dispensing. This prevents a large air bubble forming under the gel-dye mix. Placing the pipette at the edge of the well may lead to poor results.



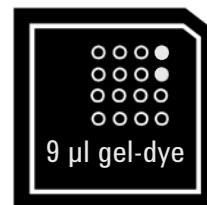
- 5 Set the timer to 30 seconds, make sure that the plunger is positioned at 1 mL and then close the chip priming station. The lock of the latch will click when the chip priming station is closed correctly.
- 6 Press the plunger of the syringe down until it is held by the clip.
- 7 Wait for exactly 30 seconds and then release the plunger with the clip release mechanism.
- 8 Visually inspect that the plunger moves back at least to the 0.3 mL mark.
- 9 Wait for 5 seconds, then slowly pull back the plunger to the 1 mL position.





**10** Open the chip priming station.

**11** Pipette 9.0  $\mu$ L of the gel-dye mix in each of the wells marked **G**

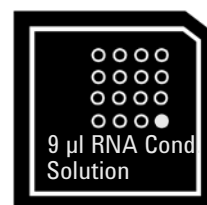


### NOTE

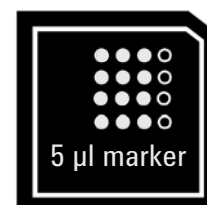
Please discard the remaining vial with gel-dye mix.

## Loading the RNA 6000 Pico Conditioning Solution and Marker

**1** Pipette 9  $\mu$ L of the RNA 6000 Pico conditioning solution (white  $\circ$ ) into the well marked CS.



**2** Pipette 5  $\mu$ L of the RNA 6000 Pico marker (green  $\bullet$ ) into the well marked with a ladder (symbol  $\blacklozenge$ ) and each of the 11 sample wells.



### NOTE

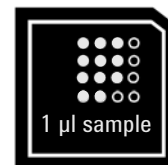
Do not leave any wells empty or the chip will not run properly. Add 5  $\mu$ L of the RNA marker (green  $\bullet$ ) plus 1  $\mu$ L of deionized water to each unused sample well.

## Loading the Diluted Ladder and Samples

### NOTE

Always use RNase-free microcentrifuge tubes, pipette tips and water.

- 1 To minimize secondary structure, you may heat denature (70 °C, 2 minutes) the samples before loading on the chip.
- 2 Before use, thaw ladder aliquots and keep them on ice (avoid extensive warming upon thawing process).



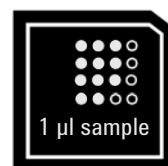
### NOTE

Do not heat the diluted ladder. Use the defrosted diluted ladder within one day.

- 3 Pipette 1 µL of the diluted RNA 6000 Pico ladder (prepared as described in ["Preparing the RNA Ladder after Arrival"](#) on page 12) into the well marked with the ladder symbol
- 4 Pipette 1 µL of each sample into each of the 11 sample wells.
- 5 Place the chip horizontally in the adapter of the IKA vortex mixer and make sure not to damage the buldge that fixes the chip during vortexing.



If there is liquid spill at the top of the chip, carefully remove it with a tissue.



### CAUTION

#### Wrong vortexing speed

**If the vortexing speed is too high, liquid spill that disturbs the analysis may occur for samples generated with detergent containing buffers.**

- ✓ **Reduce vortexing speed to 2000 rpm!**

- 6 Vortex for 60 seconds at 2400 rpm.
- 7 Refer to the next topic on how to insert the chip in the 2100 Bioanalyzer instrument. Make sure that the run is started within 5 minutes.

### NOTE

Depending on the RNA isolation protocol, varying results can be expected. Known dependencies include: salt content, cell fixation method and tissue stain. Best results are achieved for RNA samples which are dissolved in deionized and RNase-free water. Avoid genomic DNA contamination by including DNase treatment in the preparation protocol.

## Inserting a Chip in the 2100 Bioanalyzer Instrument

- 1 Open the lid of the 2100 Bioanalyzer instrument.
- 2 Check that the electrode cartridge is inserted properly. Refer to “Setting up the Bioanalyzer” on page 9 for details.
- 3 Place the chip carefully into the receptacle. The chip fits only one way.

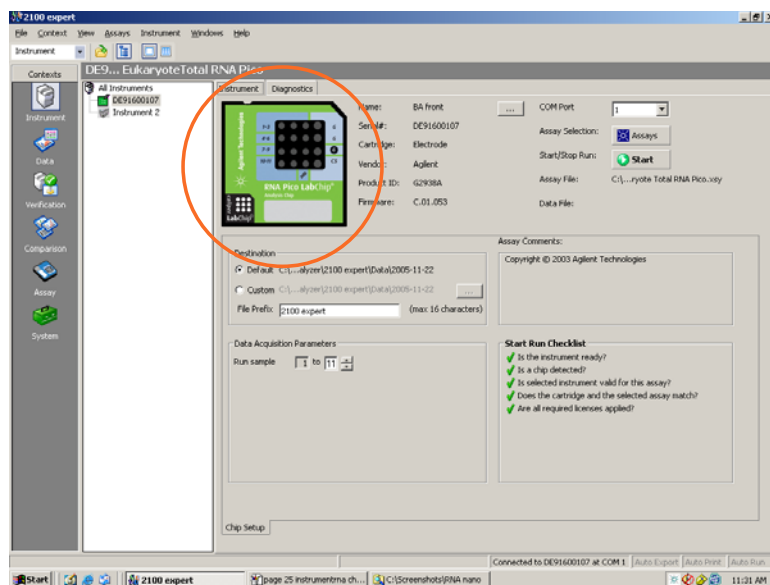
### CAUTION

#### Sensitive electrodes and liquid spills

Forced closing of the lid may damage the electrodes and dropping the lid may cause liquid spills resulting in bad results.

- ✓ Do not use force to close the lid and do not drop the lid onto the inserted chip.

- 4 Carefully close the lid. The electrodes in the cartridge fit into the wells of the chip.
- 5 The 2100 Expert software screen shows that you have inserted a chip and closed the lid by displaying the chip icon at the top left of the *Instrument* context.

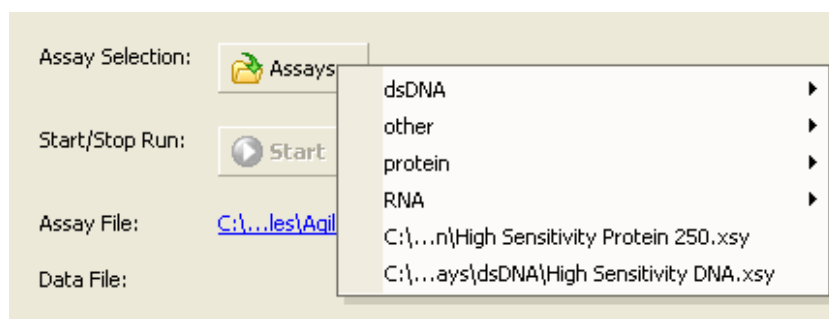


## Starting the Chip Run

### NOTE

Please note that the order of executing the chip run may change if the Agilent Security Pack software (only applicable for 2100 Expert software revision B.02.02 and higher) is installed. For more details please read the 'User's Guide' which is part of the Online Help of your 2100 Expert software.

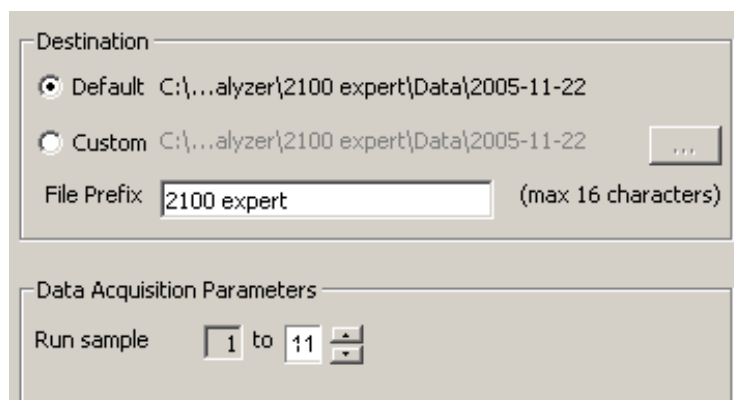
- 1 In the **Instrument** context, select the appropriate assay from the Assay menu.



- 2 Accept the current **File Prefix** or modify it.

### NOTE

Run sample numbers can vary between assays.



Data will be saved automatically to a file with a name using the prefix you have just entered. At this time you can also customize the file storage location and the number of samples that will be analyzed.

- To enter sample information like sample names and comments, complete the sample name table.

	Sample Name	Sample Comment	Status	Observation	Result Label	Result Color
▶	Sample 1					
2	Sample 2					
3	Sample 3					
4	Sample 4					
5	Sample 5					
6	Sample 6					
7	Sample 7					
8	Sample 8					
9	Sample 9					
10	Sample 10					
11	Sample 11					
12	Sample 12					

Chip Lot #

Reagent Kit Lot #

Chip Comments :

Sample Information

Study Information

Import...

Export...

- Click the **Start** button in the upper right of the window to start the chip run. The incoming raw signals are displayed in the **Instrument** context.



### CAUTION

#### Contamination of electrodes

Leaving the chip for a period longer than 1 hour (e.g. over night) in the Bioanalyzer may cause contamination of the electrodes.

- ✓ Immediately remove the chip after a run.

- After the chip run is finished, remove the chip from the receptacle of the Bioanalyzer and dispose of it according to good laboratory practices.

## Cleaning Electrodes after a RNA 6000 Pico Chip Run

When the assay is complete, *immediately* remove the used chip from the 2100 Bioanalyzer instrument and dispose of it according to good laboratory practice. After a chip run, perform the following procedure to ensure that the electrodes are clean (i.e. no residues are left over from the previous assay).

### NOTE

Use a new electrode cleaner with each new kit.

### CAUTION

**Leak currents between electrodes**

**Liquid spill may cause leak currents between the electrodes.**

✓ **Never fill too much water in the electrode cleaner.**

- 1 Slowly fill one of the wells of the electrode cleaner with 350  $\mu$ L of fresh RNase-free water.
- 2 Open the lid and place the electrode cleaner in the 2100 Bioanalyzer instrument.
- 3 Close the lid and leave it closed for 30 s.
- 4 Open the lid and remove the electrode cleaner.
- 5 Wait another 30 seconds to allow the water on the electrodes to evaporate before closing the lid.

### NOTE

Replace the water in the cleaning chip after each use. Use a new cleaning chip after 12-13 electrode cleaning procedures and with each new kit.

## Decontaminating the Electrodes

When you suspect the bayonet electrodes to be contaminated with RNase, perform the following decontamination procedure:

- 1 Remove the bayonet electrodes from the cartridge.
- 2 Spray RNaseZap® onto electrodes and soak for 1 minute.
- 3 Gently brush the electrodes.
- 4 Rinse electrodes thoroughly with RNase-free water.

### NOTE

The rinsing step is very important and needs special attention as residual RNaseZap may alter the results creating ghost peaks.

- 5 Dry the electrodes by using oil-free compressed air.
- 6 Reassemble the electrode cartridge and put it back into the instrument.
- 7 To verify that the electrodes are completely dry, perform the Short Circuit Test that you can find under the Diagnostics tab in the *Instrument* context.

### NOTE

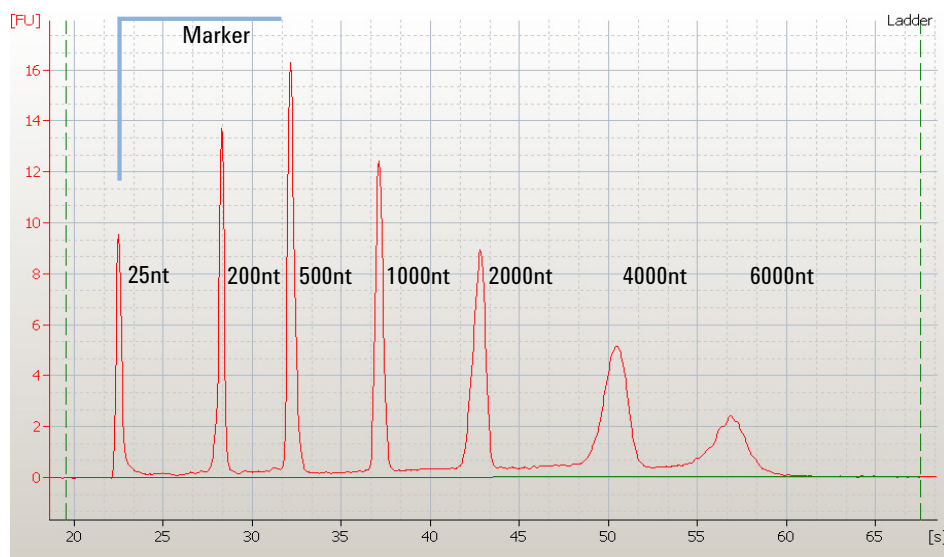
If the short circuit test fails, the cartridge may still be wet. Repeat the drying procedure.

# 7

## Checking Your RNA 6000 Pico Assay Results

### RNA 6000 Pico Ladder Well Results

To check the results of your run, select the Gel or Electropherogram tab in the *Data* context. The electropherogram of the ladder well window should resemble those as shown below.



**Figure 2 RNA 6000 Pico ladder**

Major features of a successful ladder run are:

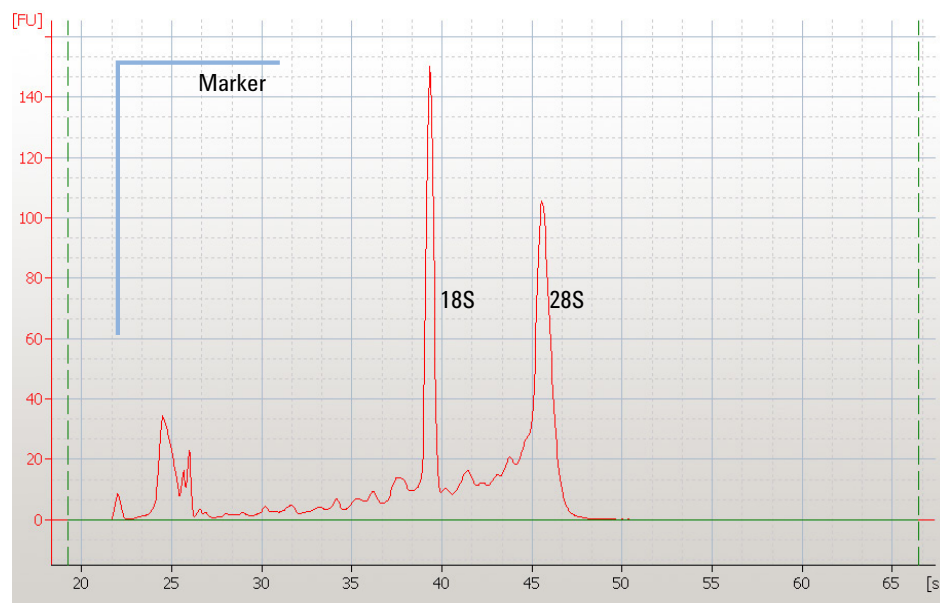
- 1 marker peak
- 6 RNA peaks (2100 Expert software calls for 5 first ladder peaks only)
- All 7 peaks are well resolved
- Correct peak size assignment in electropherogram

If the electropherogram of the ladder well window does not resemble the one shown above, refer to the *2100 Expert Maintenance and Troubleshooting Guide* for assistance.



## RNA 6000 Pico Sample Well Results

To review the results of a specific sample, select the sample name in the tree view and highlight the *Results* sub-tab. The electropherogram of the sample well window for total RNA (eukaryotic) should resemble the one shown here.



**Figure 3** RNA peaks of a successful sample run

Major features for a successful total RNA run are:

- 1 marker peak
- 2 ribosomal peaks (with successful sample preparation)

By selecting the *Results* sub-tab, values for the calculated RNA concentration, the ribosomal ratio and the RNA Integrity Number (RIN), implemented with 2100 Expert software version B.02.02 or higher, are displayed.

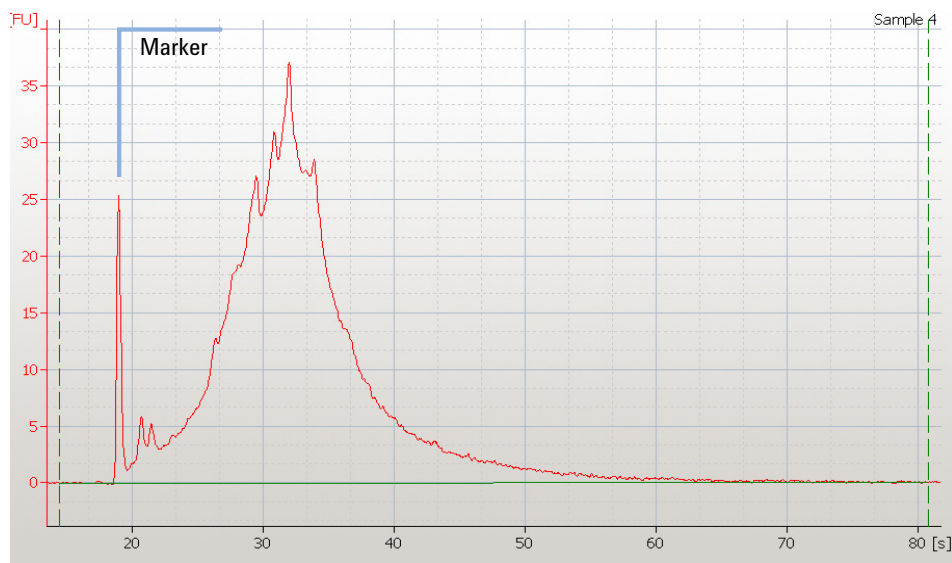
### NOTE

For information on the RNA data analysis and the RNA integrity number (RIN) please refer to the *2100 Expert User's Guide* or *Online Help*.

## Checking Your RNA 6000 Pico Assay Results

### RNA 6000 Pico Sample Well Results

The electropherogram of the sample well window for mRNA should resemble the one shown here.



**Figure 4** mRNA peaks of a successful sample run

Major features for a successful mRNA run are:

- 1 marker peak
- Broad hump (with successful sample preparation)
- Contamination with ribosomal RNA shown as 2 overlaid peaks (if present)

## In this book

you find the procedures to analyze RNA samples with the Agilent RNA 6000 Pico reagent kit and the Agilent 2100 Bioanalyzer instrument.

- Agilent RNA 6000 Pico Kit
- Required Equipment for RNA 6000 Pico Assay
- Setting up the Assay Equipment and Bioanalyzer
- Essential Measurement Practices
- Preparing the RNA Ladder after Arrival
- Agilent RNA 6000 Pico Assay Protocol
- Checking Your Agilent RNA 6000 Pico Assay Results

[www.agilent.com](http://www.agilent.com)

© Agilent Technologies Inc. 2000-2023  
Edition: 09/2023

Document No: SD-UF0000074 Rev. E.00

