



ChemVista Library Manager Software
Installation Guide

Notices

Document Identification

D0144576 A.00

April 2026

Copyright

© Agilent Technologies, Inc. 2026

No part of this manual may be reproduced in any form or by any means (including electronic storage and retrieval or translation into a foreign language) without prior agreement and written consent from Agilent Technologies, Inc. as governed by United States and international copyright laws.

Agilent Technologies, Inc.
5301 Stevens Creek Blvd.
Santa Clara,
CA
95051
www.agilent.com

Software Revision

This Guide is valid for the ChemVista Library Manager Software 1.1 revision or higher and compatible 1.0 programs until superseded.

Warranty

The material contained in this document is provided "as is," and is subject to being changed, without notice, in future editions. Further, to the maximum extent permitted by applicable law, Agilent disclaims all warranties, either express or implied, with regard to this manual and any information contained herein, including but not limited to the implied warranties of merchantability and fitness for a particular purpose. Agilent shall not be liable for errors or for incidental or consequential damages in connection with the furnishing, use, or performance of this document or of any information contained herein. Should Agilent and the user have a separate written agreement with warranty terms covering the material in this document that conflict with these terms, the warranty terms in the separate agreement shall control.

Technology Licenses

The hardware and/or software described in this document are furnished under a license and may be used or copied only in accordance with the terms of such license.

Restricted Rights Legend

U.S. Government Restricted Rights. Software and technical data rights granted to the federal government include only those rights customarily provided to end user customers. Agilent provides this customary commercial license in Software and technical data pursuant to FAR 12.211 (Technical Data) and 12.212 (Computer Software) and, for the Department of Defense, DFARS 252.227-7015 (Technical Data - Commercial Items) and DFARS 227.7202-3 (Rights in Commercial Computer Software or Computer Software Documentation).

Safety Notices

CAUTION

A **CAUTION** notice denotes a hazard. It calls attention to an operating procedure, practice, or the like that, if not correctly performed or adhered to, could result in damage to the product or loss of important data. Do not proceed beyond a **CAUTION** notice until the indicated conditions are fully understood and met.

WARNING

A **WARNING** notice denotes a hazard. It calls attention to an operating procedure, practice, or the like that, if not correctly performed or adhered to, could result in personal injury or death. Do not proceed beyond a **WARNING** notice until the indicated conditions are fully understood and met.

Contents

1	In This Guide	4
2	Installation	5
	Installation of ChemVista Library Manager Software	6
	Installation in Server with Client (Stand-alone or Server Mode)	6
	Install Client (Access Point Mode)	9
	Uninstalling ChemVista Library Manager Software	11
	Uninstalling ChemVista	11
	Uninstalling ChemVista postgresql Database System	11
	Software Verification Check	13
	Appendix A	13
	Appendix B	14
3	PCDL Installation	16
	LC/QTOF Applied Markets PCDL	17
	GC/QTOF PCDLs	21
	METLIN PCDL	23



1 In This Guide

This document provides instructions to install the ChemVista Library Manager Software in these configurations:

- Server with Client (stand-alone or server mode, both client and server are installed on the local machine). This mode is best suited for individual installations, where every instance should have its own database of substance data.
- Client (access point, client-only mode, requires a separate networked server installation). This mode is ideal for lab environments where up to 5 concurrent users can all have access to the same substance database. Note that this still requires at least 1 machine in the lab to be set up in Server with Client mode.

NOTE

The ChemVista Library Manager Software requires a server instance to function. For typical use cases, install ChemVista in stand-alone Server with Client mode. Once a Server with Client instance has been set up, client instances may be installed on other computers in the network to allow multiple users access to the same substance database.



2 Installation

Installation of ChemVista Library Manager Software	6
Installation in Server with Client (Stand-alone or Server Mode)	6
Install Client (Access Point Mode)	9
Uninstalling ChemVista Library Manager Software	11
Uninstalling ChemVista	11
Uninstalling ChemVista postgresql Database System	11
Software Verification Check	13
Appendix A	13
Appendix B	14

Installation of ChemVista Library Manager Software

NOTE

If a previous version of ChemVista is already installed, the installer automatically upgrades the existing installation without any data loss. A backup is automatically created and located in C:\Program Files\Agilent Technologies\ChemVista\DbBackups.

CAUTION

Verify the drive has enough space available to expand with the database as data is imported. For optimal performance, install to a solid-state storage device (SSD).

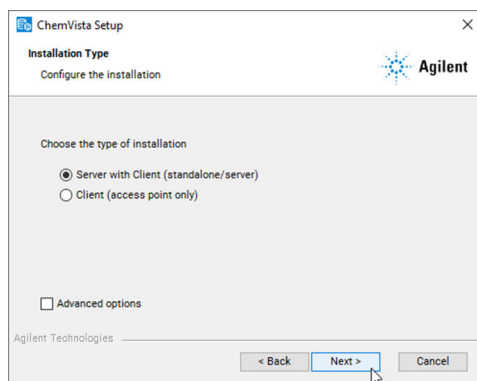
Installation in Server with Client (Stand-alone or Server Mode)

1. From the installation media, right-click **ChemVista1.1_Setup.exe** and select **Run as administrator**.
 - If prompted whether to allow the publisher to make changes to the device, click **Yes**.
2. Click **Next**.
3. Read and agree to the License Terms, select the radio button **I accept the terms in the license agreement**, then click **Next**.
4. Accept the default installation folder path or browse to another location if needed, then click **Next**.

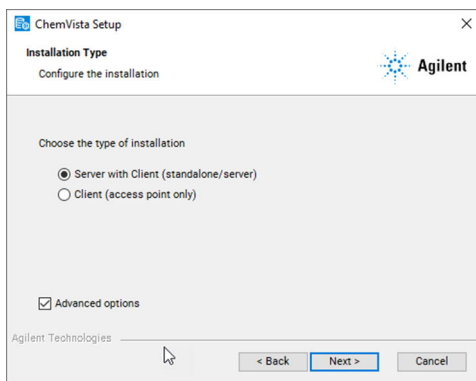
Installation

Installation of ChemVista Library Manager Software

5. Select **Server with Client (stand-alone/server)** for the type of installation.



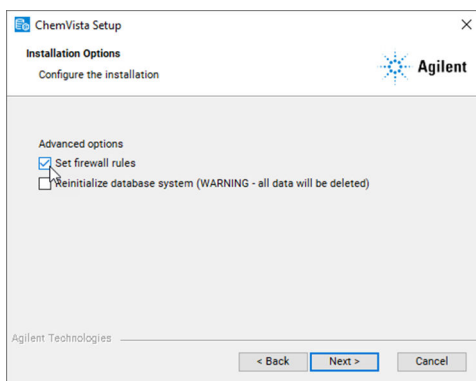
6. To use the system as a networked server, follow the advanced options below; otherwise click **Next**.
- a. Select **Advanced Options** and click **Next**.



Installation

Installation of ChemVista Library Manager Software

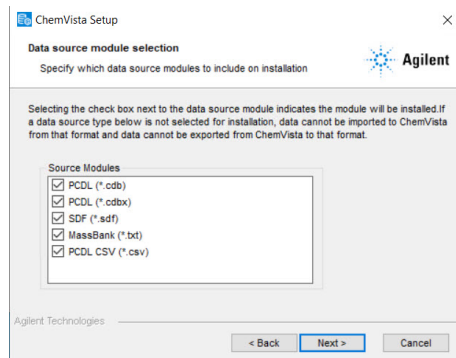
- b. Under advanced options, select **Set firewall rules** and click **Next**.



NOTE

Advanced options allows reinitialization of the database system during installation of a new ChemVista version and is intended for support use only.

7. Select the modules to install, then click **Next**.

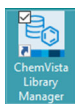


NOTE

Select the PCDL library file format (.cdb or .cdbx) that is compatible with the software platform and data files intended for use.

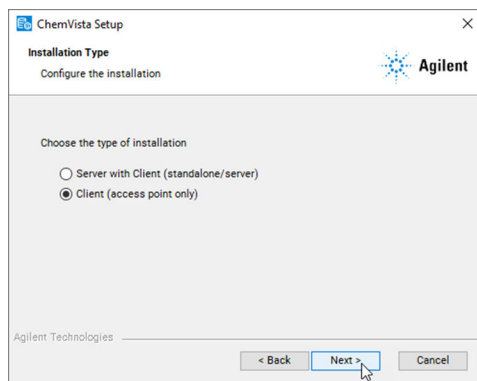
8. Accept the default server name or IP address of the server, then click **Next**.
9. Click **Install** and wait for installation to complete.
10. Click **Finish**.

The ChemVista Library Manager icon displays on the desktop.



Install Client (Access Point Mode)

1. From the installation media, right-click **ChemVista1.1_Setup.exe** and select **Run as administrator**.
 - If prompted whether to allow the publisher to make changes to the device, click **Yes**.
2. Click **Next** to proceed.
3. Read and agree to the License Terms, select the radio button **I accept the terms in the license agreement**, then click **Next**.
4. Accept the default installation folder path or browse to another location if needed, then click **Next**.
5. Select **Client (access point only)** as the type of installation and click **Next**.



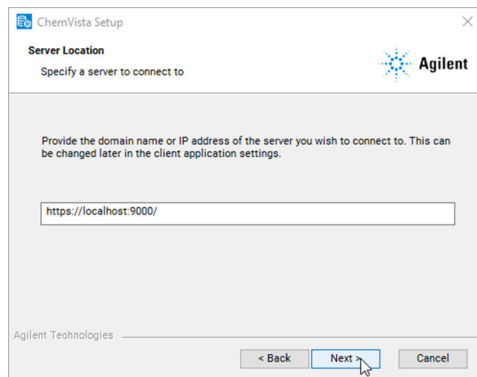
NOTE

Client-only installs require that a server be installed and accessible on the local network. To first set up a server, see the “[Installation in Server with Client \(Stand-alone or Server Mode\)](#)” section and follow the steps to install in Server mode.

Installation

Installation of ChemVista Library Manager Software

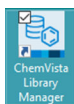
- Configure the IP address of the server computer that this client connects to. This can be changed later. The address should begin with *https://* and contain the port number. The default port used by ChemVista Server is 9000. Click **Next**.



NOTE

Network configurations vary widely from site to site. Get assistance from an IT representative to connect to the site network.

- Click **Install**.
- Click **Finish**. When the installation is complete, the ChemVista icon is displayed on the desktop.



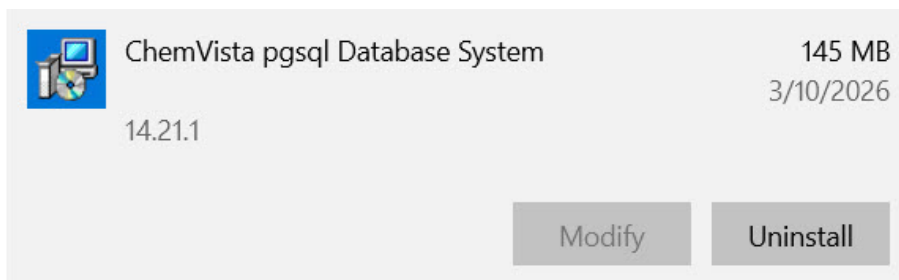
Uninstalling ChemVista Library Manager Software

Uninstalling ChemVista

1. Close all windows of the ChemVista Library Manager Client on the PC from which it is being uninstalled.
2. Click **Start > Settings**, then in Windows Settings, click **Apps**.
3. Under **Apps & Features**, search for **ChemVista**.
4. Select **Agilent ChemVista** and click **Uninstall**.
5. On the confirmation dialog box, click **Uninstall**.
6. On the **User Account Control** dialog box, click **Yes**.
7. The ChemVista Setup wizard displays. Click **Next**.
8. Click **Remove**.
9. Click **Remove** on the confirmation screen.
10. Once the wizard completes, click **Finish** to exit the Setup Wizard.

Uninstalling ChemVista pgsql Database System

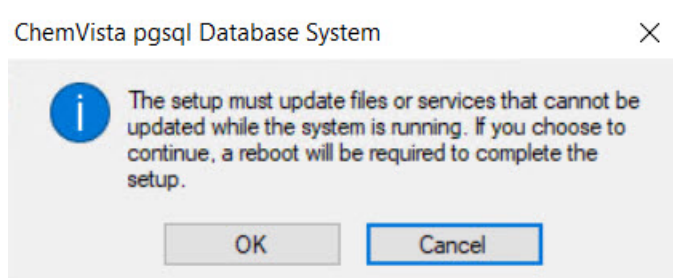
1. Select **ChemVista pgsql Database** and click **Uninstall**.



Installation

Uninstalling ChemVista Library Manager Software

2. On the confirmation dialog box, click **Uninstall**.
3. If prompted whether to allow the publisher to make changes to the device, click **Yes** to allow changes.
4. The ChemVista postgresql Database System information box displays. Click **OK**.



5. Once the uninstall process is complete, reboot the PC.

Software Verification Check

The Agilent Software Verification Tool (SVT) provides documentary evidence that the software package has been configured and installed correctly. SVT runs automatically during installation, and reports are saved to C:\SVReports.

1. From the Windows Start menu, go to **Agilent Technologies > Software Verification Tool**.
2. Check the components to qualify and the reports you want to create. You can click Select All to qualify all components.
3. Click **Qualify**.
4. The system runs the application and generates the requested Software Verification Reports.
5. If the report indicates failure, verify the computer requirements, and reinstall the data system.

Appendix A

The following packages are required for use and automatically installed alongside ChemVista.

Table 1. Installed Packages

Package	Version	Publisher	Description	Installed by
.NET Framework	4.7.2	Microsoft	Runtime environment for the .NET Framework	Client/Server
SQL Server Compact Edition (If CDB Datatype Selected)	3.5	Microsoft	Database framework for the CDB format	Server

Package	Version	Publisher	Description	Installed by
Software Verification Tool		Agilent Technologies	Install verification utility	Client/Server
ChemVista pgsqldb Database System	14.21.1	Agilent Technologies	Database service for the ChemVista application	Server

Appendix B

After a successful install, system configuration and log folders are found at the install location. The default install folder is: C:\ProgramData\Agilent Technologies\ChemVista\

Table 2. ChemVista Client System Configuration and Log Folders

Folder	Description
Config	Contains the DesktopClientConfig.xml config. Server connection information, saved searches, and basic application configuration options are saved in this file. It is recommended not to change any of the values.
Logs	Contains the debug event log. A new log file is created for each launch instance.

Table 3. ChemVista Server System Configuration and Log Folders

Folder	Description
Config	Contains the ServerConfig.xml config. Server connection information, basic application configuration options, classification, and standardization options are saved in this file. It is recommended not to change any of the values.
Jobs	Contains job logs.
Logs	Contains the debug event log. A new log file is created for each launch instance.

Installation

Software Verification Check

Folder	Description
OrphanedJob Data	Contains historical job logs from jobs that have expired.

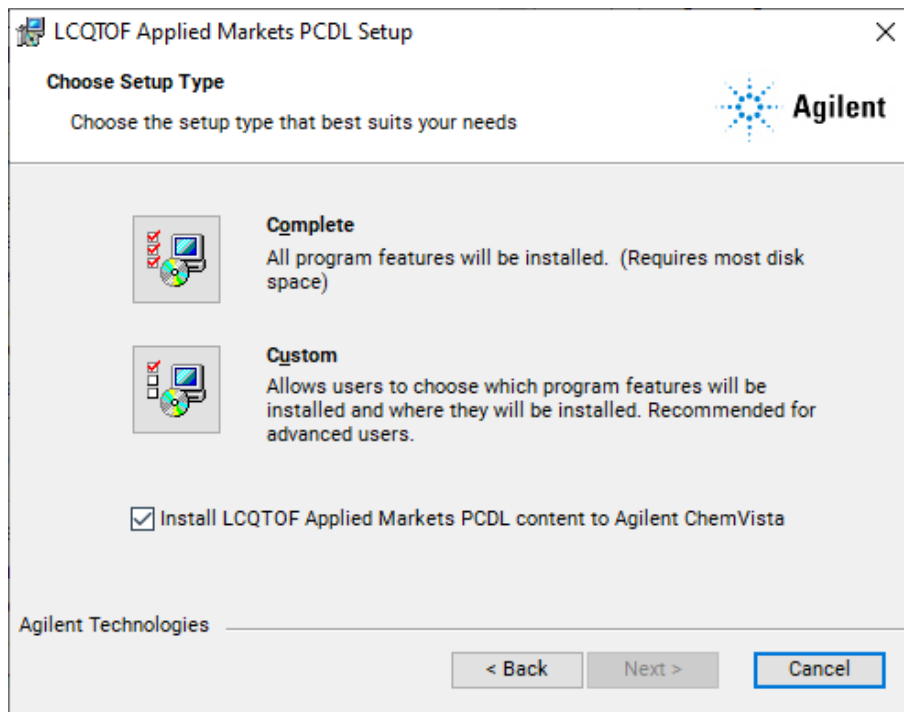


3 PCDL Installation

LC/QTOF Applied Markets PCDL	17
GC/QTOF PCDLs	21
METLIN PCDL	23

LC/QTOF Applied Markets PCDL

1. From the installation media, double-click **LCQTOF Applied Markets PCDLInstaller_v1.1.0.exe**.
2. Click **Next** to proceed.
3. Read and agree to the License Terms, then select the checkbox next to **accept the terms in the license agreement**.
4. Click **Next**.
5. Choose a **Setup Type**.



- In a **Complete** install, all features and packages are installed by default.

PCDL Installation

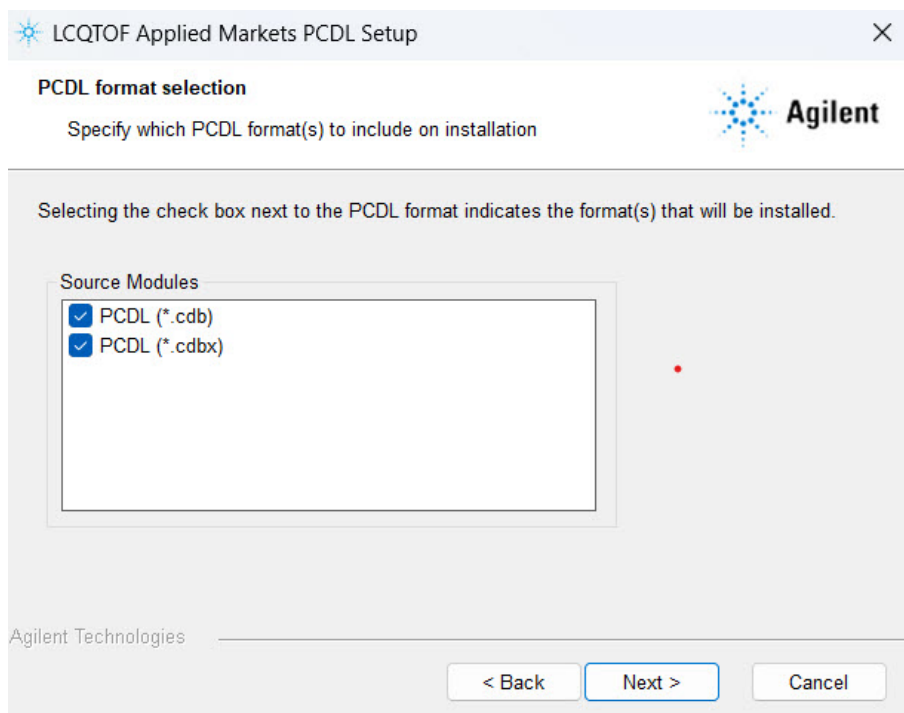
LC/QTOF Applied Markets PCDL

- In a **Custom** install, features are selected or unselected by clicking the icon next to the option. Select **Will be installed on local hard drive** to install the feature or **Entire feature will be unavailable** to skip the installation of the feature.

NOTE

The LC/QTOF Applied Markets PCDL installer bundles additional familiarization material for use alongside the standard database files and documentation. In a Complete install, all features are installed by default. To manually choose features to be installed, select the Custom setup type.

- Specify the which PCDL formats to include and click **Next**.



- (Optional) If ChemVista Server is installed to the system and you wish to preinstall the Applied Markets PCDL content into the ChemVista database system, select **Install LCQTOF Applied Markets PCDL content to Agilent ChemVista**.

NOTE

This option is unavailable if ChemVista is not installed on the system. When selected, it may significantly increase installation time.

CAUTION

It is recommended to only use this setting with a new installation of ChemVista. Data integrity cannot be guaranteed if data already exists in the system.

8. The installer automatically sets the appropriate folder to install into, based on the following conditions and order:
 - If a MassHunter home folder was previously set (through any MassHunter installation), this customer home folder is used.
 - If the system being installed to has a fixed D: drive, the folder D:\MassHunter is used.
 - Otherwise, installed files are placed under C:\MassHunter on the main hard drive.
 - If no other MassHunter installations have taken place, the option to browse and select a folder to install the PCDL content into will become available under Setup Type Custom. This option does not affect subsequent MassHunter installations.

NOTE

In situations where no MassHunter programs have previously been installed, and a removable disk is present in the D:\ drive, the removable disk may incorrectly be selected for the MassHunter home folder, and an error displayed. To resolve, install with Setup Type **Custom**, and select an appropriate home directory.

9. Click **Next**.
10. Click **Install**.
 - If prompted whether to allow the publisher to make changes to the device, click **Yes**.
11. Click **Finish**.

NOTE

For project-based MassHunter configurations (including MassHunter Quantitative Analysis 11.0 and greater, MassHunter BioConfirm 12.0 and greater, and MassHunter Acquisition 12.0 and greater), it is necessary for PCDLs to reside in the desired project path when intended to be used with Quant, etc. For Workstation configurations, installed PCDLs can be copied and pasted using Windows File Explorer. However, for Networked

PCDL Installation

LC/QTOF Applied Markets PCDL

Workstation configurations, software tools are required to ensure PCDLs are uploaded properly. For further guidance, see MassHunter Quantitative Analysis and OpenLab Server/ECM XT, ECM 3.x and OpenLab Shared Services documentation.

GC/QTOF PCDLs

NOTE

The GCQTOF PCDLs installer bundles supplemental materials including acquisition methods and an instructional video alongside the standard database files and documentation. In a Complete install, these features are installed by default. To manually choose features to be installed, the **Custom** setup type is selected.

NOTE

In situations where no MassHunter programs have previously been installed, and a removable disk is present in the D:\ drive, the removable disk may incorrectly be selected for the MassHunter home folder, and an error displayed. To resolve, install with Setup Type Custom, and select an appropriate home directory.

1. From the installation media, double-click **GCQTOF PCDLsInstaller_v1.1.0.exe**.
2. Click **Next** to proceed.
3. Read and agree to the License Terms and mark the checkbox next to **I accept the terms in the license agreement**.
4. Click **Next**.
5. Choose a preferred **Setup Type**.
 - a. In a **Complete** install, all features and packages are installed by default.
 - b. In a **Custom** install, features are selected or unselected by clicking the icon next to the option. Select **Will be installed on local hard drive** to install the feature or **Entire feature will be unavailable** to skip the installation of the feature.
6. Specify the which PCDL formats to include and click **Next**.
7. The installer automatically chooses the appropriate folder to install into, based on the following conditions and order:
 - a. If a MassHunter home folder was previously set (through any MassHunter installation), this customer home folder is used.
 - b. If the system being installed to has a fixed D: drive, the folder D:\MassHunter is used.
 - c. Otherwise, installed files are placed under C:\MassHunter on the main hard drive.

- d. If no other MassHunter installations have taken place, the option to browse and select a folder to install the PCDL content into will become available under Setup Type Custom. This option does not affect subsequent MassHunter installations.
8. Click **Next**.
9. Click **Install**. If you are prompted to allow the publisher to make changes to your device, click **Yes**.
10. Click **Finish**.

NOTE

For project-based MassHunter configurations, including MassHunter Quantitative Analysis 11.0 and greater, it is necessary for PCDLs to reside in the desired project path when intended to be used with MassHunter Quantitative Analysis, etc. For Workstation configurations, installed PCDLs can be copied and pasted using Windows File Explorer. However, for Networked Workstation configurations, software tools are required to ensure PCDLs are uploaded properly. For further guidance, see MassHunter Quantitative Analysis and OpenLab Server/ECM XT, ECM 3.x and OpenLab Shared Services documentation.

METLIN PCDL

NOTE

The METLIN PCDL installer also bundles additional example data for use alongside the standard database files and documentation. In a Complete install, these features are installed by default. In a Complete install, these features are installed by default. To manually choose features to be installed, the **Custom** setup type is selected.

NOTE

In situations where no MassHunter programs have previously been installed, and a removable disk is present in the D:\ drive, the removable disk may incorrectly be selected for the MassHunter home folder, and an error displayed. To resolve, install with Setup Type Custom, and select an appropriate home directory.

1. From the installation media, double-click **METLIN PCDLInstaller_v1.1.0.exe**.
2. Click **Next** to proceed.
3. Read and agree to the License Terms and mark the checkbox next to **I accept the terms in the license agreement**.
4. Click **Next**.
5. Choose a preferred **Setup Type**.
 - a. In a **Complete** install, all features and packages are installed by default.
 - b. In a **Custom** install, features are selected or unselected by clicking the icon next to the option. Select **Will be installed on local hard drive** to install the feature or **Entire feature will be unavailable** to skip the installation of the feature.
6. Specify the which PCDL formats to include and click **Next**.
7. The installer automatically chooses the appropriate folder to install into, based on the following conditions and order:
 - a. If a MassHunter home folder was previously set (through any MassHunter installation), this customer home folder is used.
 - b. If the system being installed to has a fixed D: drive, the folder D:\MassHunter is used.
 - c. Otherwise, installed files are placed under C:\MassHunter on the main hard drive.

- d. If no other MassHunter installations have taken place, the option to browse and select a folder to install the PCDL content into will become available under Setup Type Custom. This option does not affect subsequent MassHunter installations.
8. Click **Next**.
9. Click **Install**. If you are prompted to allow the publisher to make changes to your device, click **Yes**.
10. Click **Finish**.

NOTE

For project-based MassHunter configurations, including MassHunter Quantitative Analysis 11.0 and greater, it is necessary for PCDLs to reside in the desired project path when intended to be used with MassHunter Quantitative Analysis, etc. For Workstation configurations, installed PCDLs can be copied and pasted using Windows File Explorer. However, for Networked Workstation configurations, software tools are required to ensure PCDLs are uploaded properly. For further guidance, see MassHunter Quantitative Analysis and OpenLab Server/ECM XT, ECM 3.x and OpenLab Shared Services documentation.

www.agilent.com

© Agilent Technologies, Inc. 2026

D0144576 A.00

April 2026

