

Agilent OpenLab CDS ChemStation Edition

Version C.01.09

Release Notes and History



Agilent Technologies

Notices

© Agilent Technologies, 2010 - 2018

No part of this manual may be reproduced in any form or by any means (including electronic storage and retrieval or translation into a foreign language) without prior agreement and written consent from Agilent Technologies, Inc. as governed by United States and international copyright laws.

Manual Part Number

M8301-90139 Rev B

Edition

6/2018

Printed in Germany

Agilent Technologies
5301 Stevens Creek Blvd.
Santa Clara, CA 95051
USA .

Software Revision

This guide is valid for Agilent OpenLAB CDS ChemStation Edition Version C.01.09 and earlier.

Warranty

The material contained in this document is provided "as is," and is subject to being changed, without notice, in future editions. Further, to the maximum extent permitted by applicable law, Agilent disclaims all warranties, either express or implied, with regard to this manual and any information contained herein, including but not limited to the implied warranties of merchantability and fitness for a particular purpose. Agilent shall not be liable for errors or for incidental or consequential damages in connection with the furnishing, use, or performance of this document or of any information contained herein. Should Agilent and the user have a separate written agreement with warranty terms covering the material in this document that conflict with these terms, the warranty terms in the separate agreement shall control.

Technology Licenses

The hardware and/or software described in this document are furnished under a license and may be used or copied only in accordance with the terms of such license.

Restricted Rights Legend

If software is for use in the performance of a U.S. Government prime contract or subcontract, Software is delivered and licensed as "Commercial computer software" as defined in DFAR 252.227-7014 (June 1995), or as a "commercial item" as defined in FAR 2.101(a) or as "Restricted computer software" as defined in FAR 52.227-19 (June 1987) or any equivalent agency regulation or contract clause. Use, duplication or disclosure of Software is subject to Agilent Technologies' standard commercial license terms, and non-DOD Departments and Agencies of the U.S. Government will receive no greater than Restricted Rights as defined in FAR 52.227-19(c)(1-2) (June 1987). U.S. Government users will receive no greater than Limited Rights as defined in FAR 52.227-14 (June 1987) or DFAR 252.227-7015 (b)(2) (November 1995), as applicable in any technical data.

Safety Notices

CAUTION

A **CAUTION** notice denotes a hazard. It calls attention to an operating procedure, practice, or the like that, if not correctly performed or adhered to, could result in damage to the product or loss of important data. Do not proceed beyond a **CAUTION** notice until the indicated conditions are fully understood and met.

WARNING

A **WARNING** notice denotes a hazard. It calls attention to an operating procedure, practice, or the like that, if not correctly performed or adhered to, could result in personal injury or death. Do not proceed beyond a **WARNING** notice until the indicated conditions are fully understood and met.

Contents

Contents	2
Introduction	7
For our Regulated Customers	7
OpenLab ChemStation Edition C.01.09	8
Instrument overview improved in the OpenLab Control Panel	8
Allotrope	8
Fast access to file system	9
Enforcement of results set file structure	9
Protected custom commands for run queue and scheduler	9
OpenLab Portfolio Support Updates	9
Operating System Support	9
Third party Software provided on install media	9
Agilent LC and CE updates	10
Increased number of configurable instrument with AIC	10
Preparative LC	10
Agilent LC/MS updates	11
Agilent GC updates	11
Enhanced manual integration	11
Intelligent Reporting	11
OpenLAB ChemStation Edition C.01.08	12
Installation Path changes	12
Infrastructure Support Changes	12
Operating System Support	12
Software Requirements (provided on install media)	12
OpenLAB Control Panel	12
User Interface updates	13
Agilent LC and CE updates	13
Preparative LC	13
Agilent GC updates	14
Classic Driver	14
Intelligent Reporting	14

M8370AA OpenLAB Data Analysis	15
Secure Workstation for OpenLAB CDS ChemStation Edition	15
OpenLAB ChemStation Edition C.01.07 SR4	16
Software quality fixes	16
OpenLAB ChemStation Edition C.01.07 SR3	17
Infrastructure Support Changes	17
Operating System Support	17
Added Database Support	17
Software Requirements (provided on install media)	17
OpenLAB Control Panel 2.1	17
OpenLAB CDS Shared Services	18
Data Acquisition	18
Agilent LC and CE updates	19
Automated Fraction Collection	19
Agilent GC updates	19
Compliance Feature Enhancements	19
Intelligent Reporting	19
M8370AA OpenLAB Data Analysis	20
Secure Workstation for OpenLAB CDS ChemStation Edition	20
OpenLAB ChemStation Edition C.01.07 SR2	21
Infrastructure Support Changes	21
Data Analysis	21
Agilent LC and CE Updates	21
Agilent GC updates	21
Third Party Instrument control drivers	22
Agilent 35900E RC.Net control driver now available	22
Compliance Feature Enhancements	22
Securing ChemStation files with Secure File IO	22
Sequence Audit Trail	22
Improved notification for data transfer to central storage and queue management	22
Secure Workstation for OpenLAB CDS ChemStation Edition	22

OpenLAB ChemStation Edition C.01.07 SR1 23

- Name Pattern for Data file naming 23
- Intelligent Reporting 23
- Usage of the <user name> token in the ECM/Data Store data path 23

OpenLAB ChemStation Edition C.01.07 24

- Updated Agilent LC/CE RC.NET Driver, Version A.02.10, support of independent driver release A.02.11 24
- Updated Agilent GC RC.NET Driver install package A.02.05 24
- New Graphical Sample Entry (LC only) 24
- New OpenLAB CDS VL Product Option 24
- Added Database Support 24
- Operating System Support 24
- OpenLAB Control Panel 25
- GC Classic driver 25
- Additional Features 25

OpenLAB ChemStation Edition C.01.06 26

- Licensing 26
- New Product Options 26
- Operating System Support 26
- M8620AA OpenLAB Data Store Software A.02.01 26
- OpenLAB CDS Shared Services 26
- OpenLAB CDS Installer 27
- M8370AA OpenLAB Data Analysis A.01.02 27
- (NEW) M8313AA Secure Workstation for OpenLAB CDS ChemStation Edition 27
- New Software Verification Tool 27
- Methods and Sequences 27
 - New layout of the Sequence table User Interface 27
 - Run Queue 27
 - Editing running sequences 28
- OpenLAB CDS Upgrade 28
- def_gc.m now writable for 78xx and 68xx 28
- Intelligent Reporting Enhancements 28

Manage Rules and Alerts	29
Enhancements to Barcode reading for GC	30
Updated Agilent 78xx GC Driver, Version 5.03	30
Updated Agilent LC and CE Driver (RC.NET Drivers A.02.09)	30
Updated Agilent 68xx GC Driver, Version 6.23	30
GC classic driver no longer supported	31
Product and instrument driver versions available in the Help “About” box	31

OpenLAB ChemStation Edition C.01.05 32

Methods and Sequences	32
Data Analysis	32
Data Analysis Workflow for Single Samples	32
Last Result Mode	32
Recalculate Mode	32
Reporting	33
Intelligent Report Enhancements	33
Display or Printing of chromatograms	33
Previewing Intelligent Reports	33
Updated Agilent 78xx GC Driver, Version 5.01	33
Resource Conservation (7890B)	34
Early Maintenance Feedback EMF (7890B)	34
Barcode Scanning (7890B)	34
Agilent Parts Finder	34
Updated Agilent LC Drivers (RC.NET Drivers A.02.07)	34
Updated Agilent 68xx GC Driver, Version 6.21 (August 2013 release)	35
3rd Party Drivers: Support for Waters Acquity	35
5890 Series II GC is available but no longer supported	35
M8620AA OpenLAB Data Store A.01.02	35
Sample Submission	36
Lab Journal	36
New M8370AA OpenLAB Data Analysis A.01.01	36

OpenLAB ChemStation Edition C.01.04 37

OpenLAB Data Store A.01.01 Supported with CDS	37
Master Installer Updates	37
OpenLAB Control Panel/Shared Services Updates	37

Updates to the Intelligent Reporting Report Template Editor (RTE)	38
Method and Sequence Queue	38
Method Download Options at Instrument startup	38
Data Analysis Improvements	38
Updated Agilent LC Drivers	38
Updated Agilent 78xx and 68xx GC Drivers	38
NEW html-page for accessing OpenLAB Documentation and Manuals	39
OpenLAB ChemStation Edition C.01.03	40
Sequence Planner	40
Updated Agilent LC Driver	40
Updated Agilent GC Drivers	40
78xx Driver Version 4.02[023]	40
68xx Driver Version 6.11[008]	40
New G3581A 490 micro GC support	40
OpenLAB ChemStation Edition C.01.02	41
Agilent OpenLAB ECM connectivity	41
Master Installer Updates	41
Support for LC/MS and CE/MS on Workstation and Networked Workstation	41
New Topology: Distributed Systems (Networked AIC and Clients)	41
Updated Agilent GC Drivers, 78xx Version 4.01[049], 68xx Version 6.10[027]	41
Agilent Support information	42
OpenLAB ChemStation Edition C.01.01	43
Intelligent Reporting	43
OpenLAB Control Panel / OpenLAB Shared Services	43
New licensing	43
New Data Analysis Workflows	43
Software Status and Release Bulletins	45

Introduction

This document provides a listing of the major feature modifications made in each minor release of the Chromatography Data System product *Agilent OpenLab CDS ChemStation Edition*.

References to product documentation regarding known issues and workarounds are also provided.

For our Regulated Customers

When any change is made to Agilent software, the validation status of the software needs to be re-established by the user.

Whenever software is changed, a validation analysis should be conducted not just for the validation of an individual change, but also to determine the extent and impact of that change on the entire software system.

OpenLab ChemStation Edition C.01.09

Instrument overview improved in the OpenLab Control Panel

Introduced with OpenLAB CDS ChemStation C.01.07 SR3, the OpenLab Control Panel uses the standardized Agilent user interface style.

The instrument overview is now also available for user defined locations and the instrument table can be sorted by status, instrument controller, current user, etc. Disconnected instruments appear with an empty icon for increased visibility.

The screenshot displays the 'B23 1st Floor - Control Panel' window. It features a 'MANAGEMENT' toolbar with icons for Create, Edit Location, Delete Location, Refresh All, Edit Privileges, and Edit Columns. Below the toolbar, there are two tabs: 'Instruments and Locations' and 'Properties'. The 'Instruments and Locations' tab is active, showing a tree view on the left with 'Instruments' expanded, listing 'B23 2nd Floor', 'B23 Ground Floor', and 'B23 1st Floor'. The main area displays a table titled 'B23 1st Floor' with columns: Status, Name, Run Status, Current Sample, Used By, Type, Controller, and Description. The table contains three rows of instrument data.

Status	Name	Run Status	Current Sample	Used By	Type	Controller	Description
3 GC 7890				User B	Agilent GC System	VM-WADTST002	
1220 LC		1/1	1	User A	Agilent 1220 LC System	VM-WADTST002	
1 LC MS				User A	Agilent LC/MS System	VM-WADTST002	

At the bottom of the window, it shows 'Current user: User A' and a message: 'Your startup license has 50 days remaining.'

Allotrope

Allotrope Data Format (ADF) is now available for file-export from OpenLab CDS ChemStation C.01.09. This is a universal data format to store raw data, results and chromatograms.

The benefits in terms of added value and quality are:

- Increased data integrity
- Reduced manual effort
- Less paper-based work
- Significantly improved ability to find, share, leverage and archive data

Files in ADF format can be viewed by Allotrope Explorer independently from CDS tools.

The ADF-Export Basic version is intended for Research Use Only, and the metadata of the data description is not available.

Fast access to file system

A new menu item allows a direct and quick access to the instrument specific data directory shown in Windows Explorer. With Secure File I/O turned on, the file access is read-only.

Enforcement of results set file structure

Rev. C.01.09 of OpenLab CDS ChemStation enforces the usage of the result set file structure. Copies of the master method and sequence template are always stored along with the results.

Protected custom commands for run queue and scheduler

A new mechanism to perform custom action allows privileged users to define and modify instrument specific or global commands to be used by any operator.

A set of built-in default commands helps users to customize their command set. Custom Commands can now be entered to the run queue or the reworked ChemStation scheduler. This tool could be used to turn on and prepare instruments in an unattended mode or shut down the instruments after all items in the run queue are executed.

OpenLab Portfolio Support Updates

- Mixed Environment- ability of OpenLab CDS to be used with Rev. C.01.09 of OpenLab CDS ChemStation and OpenLab Server 2.2 or 2.3 backend.
- The Secure Workstation for OpenLab CDS ChemStation Edition uses OpenLab Server 2.3 as secured storage
- Added support of OpenLab Server 2.3, OpenLab ECM XT rev. 2.3 and OpenLAB ECM 3.5 with HF05.
- OpenLab CDS Shared Services Server 2.3 and 2.2 supported
- Discontinued support for OpenLab Server 2.1 and OpenLab CDS Shared Services Server 2.1

Operating System Support

Introduction of Windows 2016 server support for Agilent instrument controllers (AIC)

Details concerning supported operating systems are provided in the “OpenLAB CDS ChemStation Edition Requirements guide:

CDS_requirements.pdf available in folder Disk1 \Docs\<language>

Third party Software provided on install media

Keysight Technologies I/O Libraries required for MSD instrument control

Agilent LC and CE updates

Includes Agilent LC/CE RC.Net Driver Version A.02.19

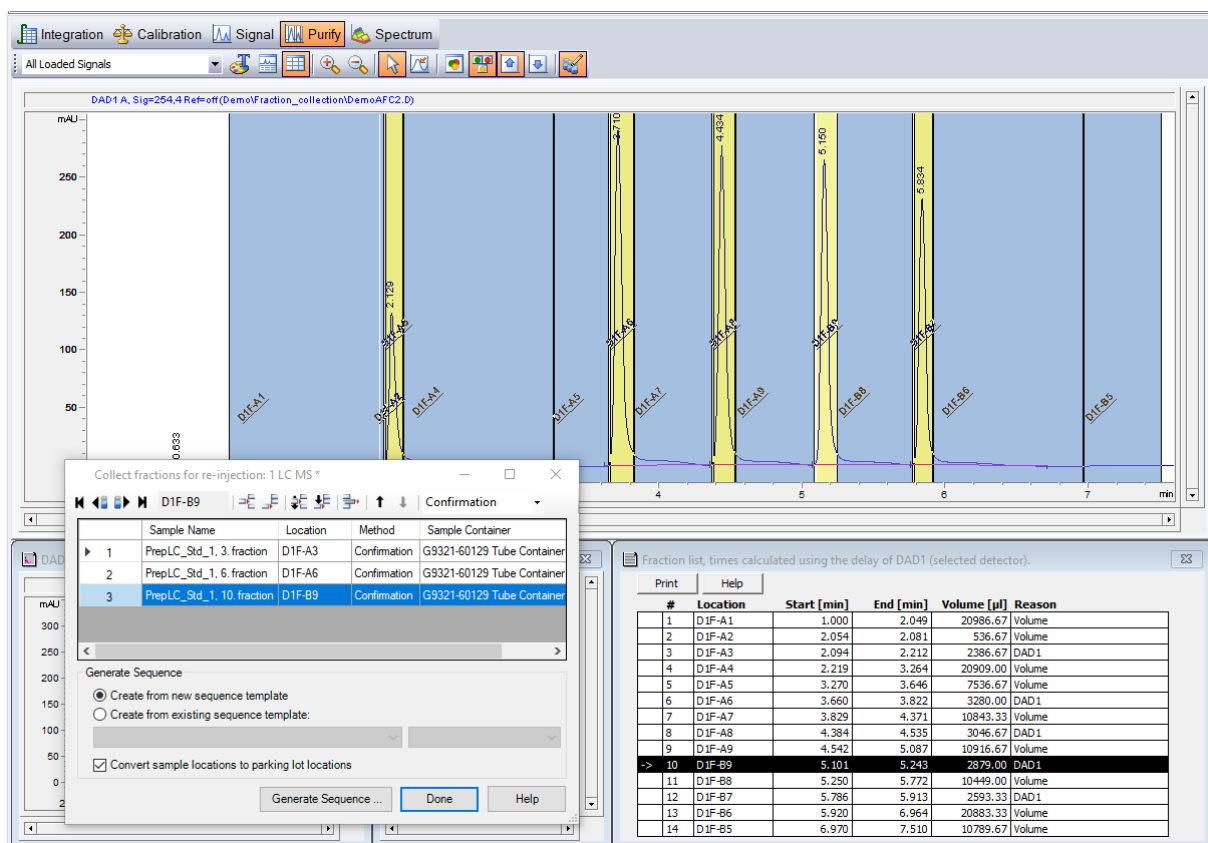
Increased number of configurable instrument with AIC

Configuration of back-up instrument controllers for non-dynamic load balancing offers more flexibility and better usage of your controller hardware.

Agilent Instrument Controllers (AIC) of ChemStation rev. C.01.09 allow to configure up to 40 instruments, where the number of concurrently operated on-line instruments remains at 10 (2-D detectors, like FID, ECD, VWD, RID, etc.).

Preparative LC

- New workflow for confirmation analysis. Interactive selection of dedicated fractions for confirmation analysis on an analytical LC system.



- UV- and MS spectra display in Purify task of the Data Analysis view
- Customizable fraction annotations for improved readability
- New demo data for UV-triggered fraction collection

Agilent LC/MS updates

- New folder structure to store MSD tune files. Secure File I/O can be used to protect tune files from deletion.
- Rev. C.01.09 also supports a fast polarity switching mode for G6125B MSD instruments.

Agilent GC updates

Includes Agilent GC RC.Net Driver Version B.01.04 providing extended maintenance feedback (EMF) functionality.

- Support of collecting up to 8 GC signals
- New generic GC instrument types for GC instruments, Agilent GC System
- New label for the VL GC instrument type, Agilent GC Core System (VL)
- Instrument re-configuration during operation of other instruments on the same instrument controller

Enhanced manual integration

- When drawing the manual integration, the line has been changed from pale gray to a darker color to make it easier to see.

Intelligent Reporting

- Support of additional report items in the report header and footer
- Single method parameters
- Peak fill colors and axis scaling based on calculation results
- Programmable custom field values
- Flow layout of MS spectra for reduced paper consumption
- Customization of fraction result table and fraction location annotations

OpenLAB ChemStation Edition C.01.08

Installation Path changes

The default ChemStation paths have been changed to comply with Microsoft's recommendations for the installation of program files, configuration data, and user data. Customized software add-on solutions need to be reviewed before installation.

Further details can be found in the *Agilent OpenLAB CDS ChemStation Edition - Upgrade Preparation Guide: CDS_CS-Upgrade.pdf* available on the installation media in folder Disk2\Docs\<language> or –after installation- from the START menu > All Programs > Agilent Technologies > OpenLAB CDS Documentation.

Infrastructure Support Changes

- Added support of OpenLAB Server 2.2 and OpenLAB ECM 3.5 with HF03.
- Dropped support of OpenLAB CDS Shared Services Server 2.1.

Operating System Support

- Discontinued support for Microsoft Windows Server 2008, Windows 7 (32 bit) and for Windows 8.1.

Details concerning supported operating systems are provided in the “*OpenLAB CDS ChemStation Edition Requirements*” guide (*CDS_requirements.pdf*) available in folder Disk1\Docs\<language>

Software Requirements (provided on install media)







- Microsoft .NET Framework 4.6 on Windows 7 and Windows 10

OpenLAB Control Panel

OpenLAB Control Panel comes with the user interface style that was introduced in OpenLAB CDS ChemStation C.01.07 SR3.

User Interface updates

- Instrument status indicators follow a new color scheme for seamless integration of newer instrument hardware and support of mixed configurations with OpenLAB CDS.

	Gray - Not Connected
	Yellow - Not Ready
	Green - Idle
	Teal - Standby
	Purple - Pre-run/Injecting
	Blue - Running
	Error

- Module Panels user interface refresh to streamline LC, GC and MSD instrument appearance.

Agilent LC and CE updates

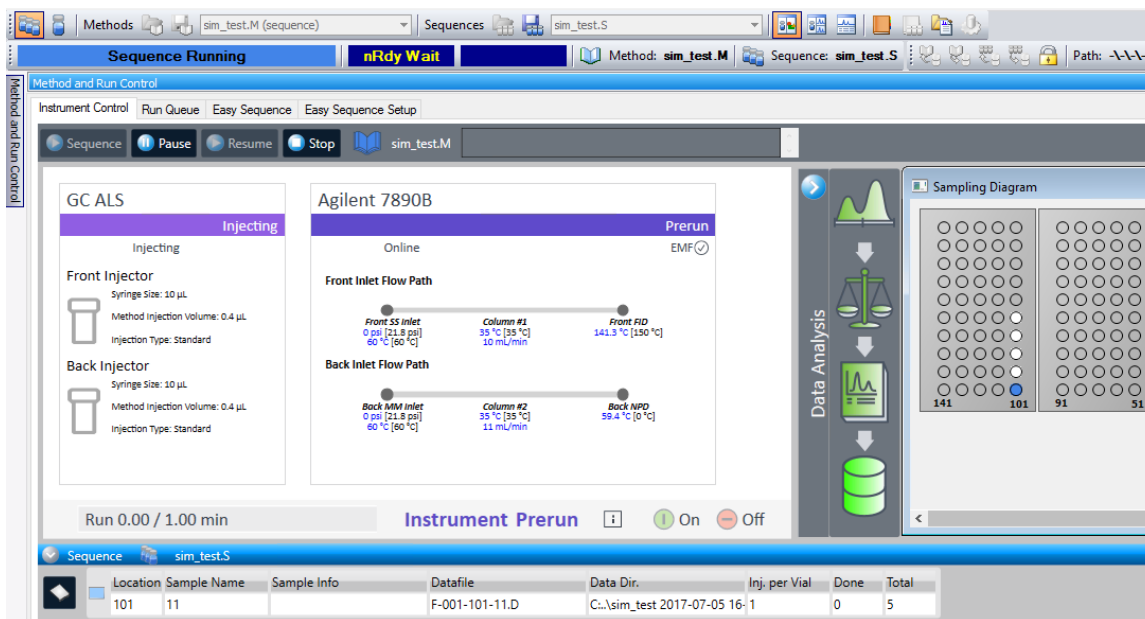
- Includes Agilent LC/CE RC.NET Driver **Version A.02.18**
- Non-Agilent instruments require RC.Net control. Please consult the instrument's vendor documentation concerning the availability of RC.Net drivers.
- New sampling diagram in instrument control view for visual monitoring of sequence execution progress
- Graphical selection of sample location in single run and sequence table
- New zoom function for sample entry user interface

Preparative LC

- Graphical selection of fraction start locations
- Support of pooling of fractions derived from multiple injections for larger amounts of sample
- Multi-submission of single runs
- Graphical representation of collected fractions for easy allocation of fraction of interest
- New report for fraction collection results

Agilent GC updates

- Includes Agilent GC RC.Net Driver **Version B.01.03**
- New GC Dashboard for Agilent Intuvo 9000 GC and 78xx



- Multi-submission of single runs

Classic Driver

Classic drivers for LC and 35900E instruments are no longer supported and need to be reconfigured with the RC.Net instrument drivers.

Intelligent Reporting

- Support of additional report items in the report header and footer
- Single method parameters
- Peak fill colors and axis scaling based on calculation results
- Programmable custom field values
- Flow layout of MS spectra for reduced paper consumption
- Customization of fraction result table and fraction location annotations

M8370AA OpenLAB Data Analysis

The OpenLAB Data Analysis functionality is now limited to OpenLAB CDS 2.2, and no supported with OpenLAB CDS ChemStation Edition.

- OpenLAB CDS 2.2 can be used with an OpenLAB CDS ChemStation C.01.08 in a mixed environment with an OpenLAB Server 2.2 backend. Consider installing OpenLAB CDS 2.2 for this purpose

Secure Workstation for OpenLAB CDS ChemStation Edition

The Secure WorkStation for OpenLAB CDS ChemStation Edition uses OpenLAB Server 2.2 as secured storage.

OpenLAB ChemStation Edition C.01.07 SR4

Software quality fixes

- Details as described in the Software Release Bulletin, available in folder Disk2\Support\History\C.xx.xx\C.01.07 SR4 of your installation media.
- Rev. C.01.07 SR4 rolls-up previously released Point Patches. Agilent InfinityLab LC/MSD systems with LC/MSD (G6125B) and LC/MSD XT (G6135B) MS Detectors can be configured.

NOTE

All C.01.07 SR3 user documentation also applies to C.01.07 SR4.

OpenLAB ChemStation Edition C.01.07 SR3

Infrastructure Support Changes

- Support of OpenLAB Server 2.1 and OpenLAB ECM 3.5 with HF02
- Support of OpenLAB CDS Shared Services Server 2.1
- Software is provided on USB media

Operating System Support

- Windows 10 Professional or Enterprise (64-bit)
- Windows 8.1 Professional or Enterprise (64-bit) (32-bit for upgrade installations only)
- Windows 7 SP1 Professional or Enterprise (32-bit / 64-bit)
- Microsoft Windows Server 2008 SP1 Standard or Enterprise
- Microsoft Windows Server 2012 R2 Standard or Datacenter

Added Database Support

- Microsoft SQL Server 2014
- PostgreSQL 9.3

Software Requirements (provided on install media)

- Adobe Acrobat Reader DC Classic
- Microsoft .NET Framework 4.5.2 (4.6 on Windows 10)
- PDF-Xchange 6 printer driver

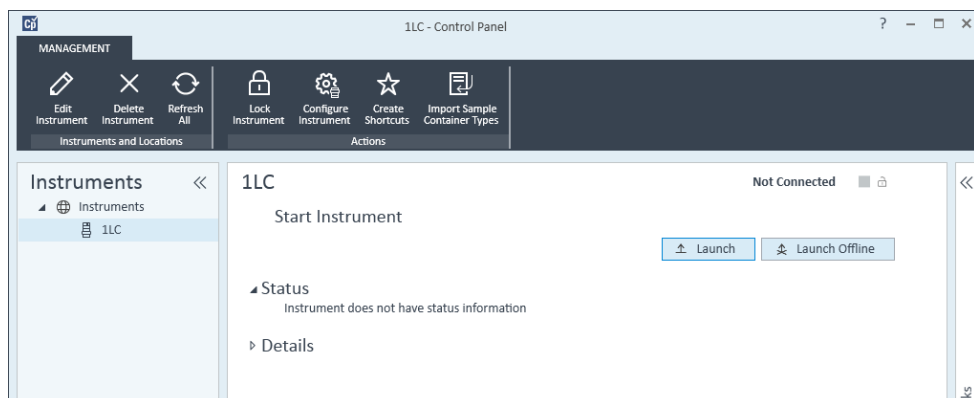
OpenLAB Control Panel 2.1

OpenLAB ChemStation Edition C.01.07 SR3 introduces a new OpenLAB Control Panel user interface (OpenLAB Control Panel 2.1).

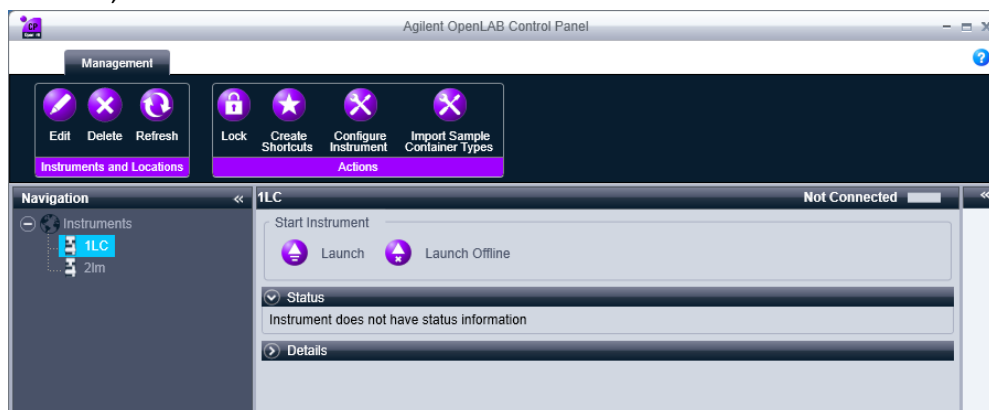
This new version of the Control Panel includes 2 new privileges:

- Administrative > System Administration > **Manage Instrument Controllers**
This privilege allows the user to delete an Instrument Controller in the OpenLAB Control Panel
- Project > Project Management > **Access content using web client**
This privilege allows the user to access the Content Management web client interface used with Secure WorkStation for OpenLAB CDS ChemStation Edition or Networked/Distributed systems with an OpenLAB Server backend.

- OpenLAB Control Panel 2.1 will be deployed for new installations and upgrades for versions prior to C.01.07.



- The OpenLAB Control Panel remains unchanged when upgrading from C.01.07, C.01.07 SR1, or C.01.07 SR2.



OpenLAB CDS Shared Services

- Added support for SQL Server 2014 and Windows 10.
- Refreshed user interface based on the new Agilent design guidelines.
- “Windows Local” authentication mode is no longer available with new installation
- Activity log filtering based on event type.

Data Acquisition

New option to override the method injection volume for single runs

A new injection volume field has been added to the sample info dialog. It is equivalent to the function available in the sequence table and allows users to overwrite the method setting without modifying the method. The modified injection volume gets marked on the report.

Agilent LC and CE updates

- Includes Agilent LC/CE RC.NET Driver Version A.02.15
- Support for G7159B 1290 Infinity II Preparative Open-Bed Fraction Collector
- Support for G7166A 1260 Infinity II Prep. Valve-based Fraction Collector

Automated Fraction Collection

- Classic instrument drivers for fraction collector modules are obsolete. Instruments containing these modules need to be reconfigured with RC.Net instrument drivers
- New delay calibration wizard for MS- and UV- based fraction triggering
- Fraction times in Data Analysis are adjusted by the respective delay time for multi-detector systems

Agilent GC updates

- Includes Agilent GC RC.Net Driver Version B.01.01
- Support for the Agilent Intuvo 9000 GC
- User Interface refresh
- 7820 EPX support
- Improved usability in the Backflush Wizard
- Ability to switch layer order for sandwich injections

Compliance Feature Enhancements

- New session lock design for improved usability
The new session lock indicates the lock status in the title bar of the locked window. Whenever a user tries to interact with the software, the login panel appears and the user needs to unlock the session with valid credentials.
- Administrative changes to the ChemStation Administration tool settings are tracked in the OpenLAB Control Panel activity log.

Intelligent Reporting

- Review mode now able to report unique and non-unique storage path(s)
- New Field: Peak Width at 10% Peak Height

M8370AA OpenLAB Data Analysis

- Not supported with Windows 10.

The OpenLAB Data Analysis functionality is part of OpenLAB CDS 2.1. Consider installing OpenLAB CDS 2.1 for this purpose. OpenLAB CDS 2.1 can be used with an OpenLAB CDS ChemStation C.01.07 SR3 in a mixed environment with an OpenLAB Server 2.1 backend.

Secure Workstation for OpenLAB CDS ChemStation Edition

- The Secure WorkStation for OpenLAB CDS ChemStation Edition uses OpenLAB Server 2.1 as secured storage.

OpenLAB ChemStation Edition C.01.07 SR2

Infrastructure Support Changes

Support of OpenLAB CDS A.02.02 SR2 and OpenLAB CDS 2.0 sharing the same OpenLAB Data Store server

Support of OpenLAB Data Store 2.0 and ECM 3.4.1 SP2

Data Analysis

- AreaSumSlice enhanced for SIMDIS application
- Modified calculation of Foley-Dorsey peak parameters (Peak symmetry and column plate numbers)
- System Suitability / Extended performance calculations are now available for negative peaks

Agilent LC and CE Updates

- Agilent LC/CE RC.NET Driver Version A.02.13
- Newly inserted columns with column tags are now automatically transferred to the ChemStation core columns database. The columns are then shown in the core columns table dialog and are immediately reported and calculated in the system performance calculation.
- G7116B Multi Column thermostat now supports up to 8 tagged columns
- Export/Import function for LC column catalog or inventory
- Sequence validation of the injection volume for the Multisampler Dual needle now considers the method specified in the sequence line to validate the injection volume

Agilent GC updates

- Agilent GC RC.Net Driver Version A.03.02
- 7890B supports Agilent 8355 Sulfur (G3488A) and 8255 Nitrogen (G3489A) Chemiluminescence Detectors.
- G7300AA Easy SamplePrep no longer provided as a separate software add-on, it is included in the Setup Method for 6890 and 7890, using a 7693 ALS.
- GC Method Editor provides a Navigation Tree of the available instrument devices such as inlets, detectors, oven, and signals for 78xx only.
- 7820A supports FPD, FPD+, COC and the TCD timed events.
- Retention Time Locking supported with 7820A

Third Party Instrument control drivers

- M8505AA Waters Acquity Driver support
- M8239AA Waters Alliance LC Add-On support for Alliance and e-Alliance including the Waters 2998 PDA and 2489 Dual Wavelength Detector

Agilent 35900E RC.Net control driver now available

- Supports separating the 35900 channels between 2 independent instruments on a ChemStation AIC

Compliance Feature Enhancements

Securing ChemStation files with Secure File IO

- ChemStation files such as data, methods, or sequences are stored in various local folders. To ensure data integrity, ChemStation offers the Secure File IO function. If you enable this function, all folders will be protected against modifications from outside ChemStation or in Open or Save As dialog.
- Three new user privileges are introduced to control access to unprotected folders

For more information, refer to the Folder Protection with Secure File IO chapter in the OpenLAB CDS Administration Guide.

Sequence Audit Trail

- Sequence audit trail viewer can now display the sequence as initially submitted
- Improved tracing

Improved notification for data transfer to central storage and queue management

- Data files in the queue waiting to be uploaded are now marked with an Asterisk
- Improved Queue Management Messaging when deleting an entry from the Queue

Secure Workstation for OpenLAB CDS ChemStation Edition

- The Secure WorkStation for OpenLAB CDS ChemStation Edition uses OpenLAB Data Store 2.0 as secured storage
- A new archiving option called **Offline Archive** allows removal of selected files or Folders from the OpenLAB Data Store database for offline archival. The offline archived files will be stored in a folder created during the installation (e.g. D:\DSArchive)
- New User Interface based on the new Agilent design guidelines.

OpenLAB ChemStation Edition C.01.07 SR1

Name Pattern for Data file naming

A new data file naming option allows the selection of tokens like vial number or sequence line for the data file name. This option is the default for new sequence templates.

Intelligent Reporting

New Sample Order Number field added that can be used to group multiple (replicate) injections from the same vial with identical parameters.

Usage of the <user name> token in the ECM/Data Store data path

Data now stored under the <user name> token of the user who submitted the sequence.

OpenLAB ChemStation Edition C.01.07

Updated Agilent LC/CE RC.NET Driver, Version A.02.10, support of independent driver release A.02.11

- Support for the new Agilent 1290 Infinity II Multisampler (G7167A/B)
- Driver Version A.02.11 adds support for new Agilent Infinity II modules
- 2D-LC with heart cutting: Switch easily between single dimensional LC and 2D-LC for challenging separations

Updated Agilent GC RC.NET Driver install package A.02.05

- Agilent 78xx RC.Net GC driver, version 5.05
- Agilent 68xx RC.Net GC driver, version 6.25

New Graphical Sample Entry (LC only)

Introduces a graphical representation of autosamplers and sample containers (tray and plate) to simplify the task of creating sequences or sample lists.

New OpenLAB CDS VL Product Option

An Agilent LC Core system driver is bundled with the OpenLAB CDS VL core license. This driver can run a full 1260 Infinity LC Instrument with selected modules (for details, see the “Supported Instruments and Firmware” guide).

Added Database Support

- Microsoft SQL Server 2012 SP2 Standard or Enterprise Ed.
- PostgreSQL 9.2
- Oracle 12c R1
- Microsoft SQL Server 2008 R2 SP2 Standard, Enterprise or Express Edition (Express Edition supported for upgrades only)
- Oracle 11g R2 supported for upgrades only

Operating System Support

- Windows 7 SP1 professional or Enterprise (32-bit / 64-bit)
- Windows 8.1 professional or Enterprise (32-bit / 64-bit)

- Microsoft Windows Server 2012 R2
- Microsoft Windows 8.1 (64-bit) with M8313AA Secure Workstation for OpenLAB CDS ChemStation Edition C.01.07

OpenLAB Control Panel

Lab-at-a-glance view now has a column called “Current Sample” which displays the name of the running sample.

GC Classic driver

The 68xx GC classic driver can no longer be selected or used to acquire data. After an upgrade, the 68xx series GC must be re-configured to use the RC.NET driver in Agilent OpenLAB Control Panel. GCs using GPIB must update to LAN. There will be no new updates or hotfixes for the 68xx GC Classic driver.

Additional Features

- Sequence Audit Trail
- Remote ChemStation Termination on an AIC
- Import sample container types from OpenLAB Control Panel

OpenLAB ChemStation Edition C.01.06

Licensing

With OpenLAB CDS A.02.01, Agilent is increasing the license version. With OpenLAB CDS ChemStation Edition C.01.06, the license version will increment to 1.6. The license must be upgraded before installing the new OpenLAB CDS ChemStation Edition C.01.06. For customers with a valid SMA, an upgrade button is shown in SubscribeNet, which allows upgrading the license to license version 1.6.

New Product Options

- 490 micro GC driver available under VL-licensing
- M8390AA OpenLAB CDS ChemStation Data Analysis only license added
- M8313AA Secure Workstation for OpenLAB CDS ChemStation Edition

Operating System Support

- Windows 8.1 professional or Enterprise (32-bit / 64-bit)
- Windows 7 SP1 professional or Enterprise (32-bit / 64-bit)
- Microsoft Windows 7 SP1 (64 bit) with M8313AA Secure Workstation for OpenLAB CDS ChemStation Edition C.01.06
- Microsoft Windows XP no longer supported

M8620AA OpenLAB Data Store Software A.02.01

- OpenLAB Data Store has its own Installer
- Support for PostgreSQL Database
- Support for up to 30 instruments. See Data Store hardware and software requirements guide for details.
- Support of OpenLAB CDS ChemStation Edition and ICP-MS Workstations on the same server
- Lab Applications is not supported with this release

OpenLAB CDS Shared Services

- Updates to OpenLAB Shared Services Login, Failover and Local Configuration Screens
- Support for PostgreSQL Database

OpenLAB CDS Installer

OpenLAB CDS Installer now deploys ELSD drivers for the G4260A (Agilent 380 ELSD) / G4261A (Agilent 385 ELSD), G4260B (Agilent 1260 Infinity ELSD) and G4261B (Agilent 1290 Infinity ELSD).

M8370AA OpenLAB Data Analysis A.01.02

OpenLAB Data Analysis is a product for chromatographic data from OpenLAB CDS ChemStation and EZChrom Editions. OpenLAB Data Analysis A.01.02 adds productivity, calibration and quantification enhancements, user interface improvements for data review and reprocessing and more. Refer to the Release Notes on Disk 7 for a detail list of enhancements.

(NEW) M8313AA Secure Workstation for OpenLAB CDS ChemStation Edition

The Secure Workstation for OpenLAB CDS ChemStation Edition is a combination of two existing products (OpenLAB CDS ChemStation Edition C.01.06 and OpenLAB Data Store A.02.01) running on the same computer for 2 instruments maximum.

New Software Verification Tool

The Installation Qualification (IQT) and Installation Qualification Report name have been updated to Software Verification and Software Verification Report. There is no change to functionality.

Methods and Sequences

New layout of the Sequence table User Interface

- New intuitive sequence table setup wizard
- Copy and paste to and from external programs such as Excel
- Excel like editing of table
- New injection source selection in table for GC; alternate between front and back injections now supported in one table
- Dual injection setup in one table
- Multiple ISTD (up to 8 available)
- Enhancements to Barcode reading

Run Queue

- New privileges for queue handling
- Delete entries from run queue
- Change priority in run queue

Editing running sequences

- Sequence lines are converted to a run-by-run list once a sequence template is submitted to the queue.
- Multiple injections are no longer grouped by sequence line. For example, 4 injections per locations will be shown as 4 individual sequence lines for easy preview. Once a sequence is started, adding a multiple injection per location sequence line is no longer possible. A separate line per injection must be entered. The “Filldown Wizard” can be used to add a separate line per injection.
- When adding or editing a run in a running sequence, the data file name will be set to **OnlineEdited#.D** where # is a number.

OpenLAB CDS Upgrade

OpenLAB CDS A.02.01 allows for lab operation during an upgrade phase to minimize lab down time. This mode supports running different versions of OpenLAB CDS on the same Networked or Distributed environment (for details, see “OpenLAB CDS Administration” guide).

def_gc.m now writable for 78xx and 68xx

The def_gc.m can now be updated with the instrument settings.

Intelligent Reporting Enhancements

- Enhanced printing of calibration curves
- Enhanced scaling and new coloring options for chromatograms
- Change of font properties for multiple report items at the same time
- Printing instrument curves without the need to include UV signals
- Direct access to properties of a table column
- Expression support for chart axis scaling
- Simple peak filter for chart control (like table/matrix)
- Change of paper size and orientation at any time
- Improved alignment tools
- Date/time filter for the report template audit trail viewer
- Basic support of LC/MS reporting:

LC/MS chromatograms (TIC and EIC as defined in the method)

LC/MS Spectra (Peak Apex and averaged spectra)

LC/MS quantitative results

Manage Rules and Alerts

Configurable pre-injection error handling (missing vial for a tray; plunger error for injector)

- Skip the vial
- Pause
- Stop
- Configurable action after pressing GC stop button
- (New) Pushing the stop key at the GC keyboard will stop the current run and generate a report then continue to the next line in the sequence.
- Abort

Enhancements to Barcode reading for GC

Read Barcode automatically before each injection during the sequence. The sequence is run with blank sample names. The barcode is read before each injection and written into the Sample Name field of the report.

Fill in sample name from barcode directly into the Sequence table automatically. Highlight the sample name column and select the barcode icon to automatically write the barcode to each sample name field in the sequence table unattended.

Updated Agilent 78xx GC Driver, Version 5.03

- Hydrogen sensor support for calibration, reporting and hydrogen shutdown when hydrogen leak detected
- Improved operation following short LAN interruptions
- NPD adjust setup now available in the Maintenance dialog
- Capillary Flow Technology software wizard installed with 78xx Driver and available as a menu
- Method migration (68xx to 7890)
68xx classic to 68xx RC.NET
6890 classic / RC.NET to 7890
- 7697A headspace to 7890B GC communication shown in status
- Improved direct communications between 7890B GC & 7697A headspace for EMF and Sleep/Wake and Vent methods

Updated Agilent LC and CE Driver (RC.NET Drivers A.02.09)

- ISET 3 (Intelligent System Emulation Technology) - using 1290 Quaternary Pump [G4204A]. The 1290 Quaternary Pump can now be used to emulate other pumps with ISET 3.
- Support of the HDR feature for DAD detectors (G4212A/B)
- Support of the Valve Head 5067-4214 (2ps/4pt-4pt, 1200 bar) with the UVD G1170A and the Flexible Cube G4227A

Updated Agilent 68xx GC Driver, Version 6.23

- Extend the run time during acquisition via a menu item
- Ability to do column compensation for the 6850 GC from the software
- Data files now contain the current signals if the front inlet is connected to a back detector
- Ability to configure autosampler error handling available from the Configuration tab/ALS in the Method Editor.

GC classic driver no longer supported

The GC classic driver is not tested and no longer supported.

68xx series GC upgrades must re-configure the 6890/6850 to use the RC.NET driver in Agilent OpenLAB Control Panel. There will be no new updates or hotfixes for the GC Classic driver.

Product and instrument driver versions available in the Help “About” box

Detailed product and driver versions are now available.

OpenLAB ChemStation Edition C.01.05

Methods and Sequences

Users can now review acquisition methods in Method & Run Control View using the Acquisition Method Viewer. The viewer does not load the method to the instrument and does not trigger method resolution.

Data Analysis

Data Analysis Workflow for Single Samples

The Navigation Table now shows the acquisition method as well as the data analysis method for single samples. The system automatically loads the respective master method for a single run. A fly-over indicates the path to the data analysis method.

Last Result Mode

The Last Result Mode can now be accessed from the view menu or via the new icon in the Data Analysis view. Using the Last Result Mode, it is now possible to save the data analysis parameters last used from the DA.M method into a master method. The user has three options:

- to update any master method with the data analysis parameters,
- update the loaded master method with the data analysis parameters, or
- save as new master method by combining the data analysis parameters with acquisition parameters from any master method.

In the Last Result Mode, users may only modify the data analysis method DA.M and create a report when saving the modified data analysis parameters to a master method.

Recalculate Mode

The Recalculate menu now lists the same actions that are provided by the icons.

In the Preferences, the user has the choice whether to automatically load the master method used for the last data analysis. This option is applied for the loading of single runs.

Reporting

Intelligent Report Enhancements

Table columns can now be formatted using conditional formatting based on expression results. Expressions may include custom variables and parameters.

Users can now select to include EMF counters and advanced run information in reports.

Display or Printing of chromatograms

A new printing option optimizes the printout of chromatograms for black and white printers. All signals are drawn with black color.

The drawing of baselines has been improved. For a series of overlaid signals, the user may choose to limit the peak annotation to a single signal or annotate all.

Users may turn off bitmap data compression for high detector sampling rates. This option does not affect the acquired raw data. Switching off data compression only improves the display and printing of the signal.

The new reporting option "fraction delay" allows correction for the delay time between fraction collector and detector when marking the fractions in the chromatogram printout.

Printing performance has been improved by now reading audit trail information from the ChemStation register files instead of the ACAML file. The audit trail still gets reported as expected.

Previewing Intelligent Reports

Interactively updated report previews can be printed as a hard copy or saved as PDF.

Updated Agilent 78xx GC Driver, Version 5.01

- Support for new Agilent 7890B GC instrument
- Improved handling of Autosampler (ALS) errors such as a missing vial; ALS abort/retry option provided in GC status user interface
- New Resource Conservation (Sleep/Wake) with 7890B
- New Early Maintenance Feedback (EMF) with 7890B
- New Barcode Scanning with Auto-Input with 7890B
- Updated Column Configuration, including the ability to lock the column
- New Syringe and Liner Configuration
- Support for the 7667A Mini Thermal Desorber (TD)
- GC Calculators integrated into the method editor
- Updated Columns Database

- New Syringe and Liner Databases
- New Keypad Lock Options

Resource Conservation (7890B)

Users may now reduce gas and power consumption with the new Resource Conservation functionality. The instrument can be put to sleep manually or by scheduling the time in the Wake and Sleep methods.

Early Maintenance Feedback EMF (7890B)

User-defined EMF counters can now be set in OpenLAB CDS based on the configuration of the GC. Warnings and Service Due notifications are provided based on the configured thresholds. EMF exceptions can be printed on Intelligent Reports.

Barcode Scanning (7890B)

Barcode scanning enables automatic transfer of column, liner and syringe information into the method.

Agilent Parts Finder

The new Agilent Parts Finder Tool is tightly integrated with OpenLAB CDS ChemStation Edition. It can be called from the Instrument menu and allows users to quickly locate the part number and add it to the parts list or favorites and then print the parts list or save it to a file. The parts finder supports the 7693A and 7650A ALS, 7890A and 7890B GC.

Updated Agilent LC Drivers (RC.NET Drivers A.02.07)

Support for Agilent 1260 Preparative LC Systems including:

- 1260 Isocratic Preparative Pump (G1361A)
- Cluster of up to four 1260 Isocratic Preparative Pumps (G1361A)
- Fraction Collector (G1364A)
- Cluster of up to three Fraction Collectors (G1364A/B/C or G5664A) and additionally one as Recovery Fraction Collector (G1364A/B/C or G5664A)
- 1260 Dual Loop Autosampler (G2258A)
- 1260 Preparative Autosampler (G2260A)

Updated Agilent 68xx GC Driver, Version 6.21 (August 2013 release)

- Ability to do column compensation for the 6850 GC from the software
- Data files now contain the current signals if the front inlet is connected to a back detector
- Ability to configure autosampler error handling available from the Configuration tab/ALS in the Method Editor.

3rd Party Drivers: Support for Waters Acquity

The Waters Acquity driver allows the control of the following Waters Acquity and Acquity H-Class modules in OpenLAB CDS ChemStation Edition C.01.05:

- ACQUITY Sample manager
- ACQUITY Binary solvent manager
- ACQUITY Column manager (CM)
- ACQUITY H-Class Sample manager FTN
- ACQUITY H-Class Quaternary solvent manager
- ACQUITY H-Class Column manager (CM-A)
- ACQUITY H-Class Column manager AUX
- ACQUITY and ACQUITY H-Class Sample organizer
- ACQUITY and ACQUITY H-Class TUV detector
- ACQUITY and ACQUITY H-Class PDA detector
- ACQUITY and ACQUITY H-Class PDA eLambda detector
- ACQUITY and ACQUITY H-Class Fluorescence detector
- ACQUITY and ACQUITY H-Class ELSD detector

5890 Series II GC is available but no longer supported

The ability to configure a 5890 Series II GC has been re-introduced into the software. There will be no new updates or hotfixes for the 5890 Series II.

M8620AA OpenLAB Data Store A.01.02

With OpenLab Data Store A.01.02, the Lab Applications have been introduced to accommodate common laboratory workflows and includes two applications:

Sample Submission

- Request an analysis - Prepare a chromatography sequence and assign it to the analyst through Data Store.
- Accept and complete the analysis - The analyst receives the sequence, runs it on an instrument using an Agilent CDS system, and stores the results into Data Store.
- Review results - Import the results, review, approve or reject them in Data Store.

Lab Journal

- Manage lab assets, such as instruments and columns.
- Capture important lab events such as instrument service, replacements, calibrations, and etc.
- Review the operations that occurred on a specific instrument or column.

Display simple usage statistics for instruments or columns.

In addition, the Data Store user interface has been redesigned to support the new applications.

New M8370AA OpenLAB Data Analysis A.01.01

With OpenLAB Data Analysis, Agilent introduces a new data analysis package to create sample reports, sequence summary reports, and cross-sequence summary reports. It is fully integrated and compatible with data from EZChrom and ChemStation Edition.

The first release is designed for data analysis in Chemical and Petrochemical laboratories and Hydrocarbon Processing Industry. Version A.01.01 features:

- Very fast reprocessing (more than 10 times faster than OpenLAB CDS).
- Intuitive operation with "flat" user interface.
- Microsoft-style function ribbons and improved data selection tree allow fast access to main functions and data. Select data from multiple folders, load complete result sets, or select single samples.
- One-click peak integration tool for fast review.
- Easy sample review: New data viewing concept allows overlaying and comparing hundreds of signals. Work with both LC and GC instruments at the same time and use multiple methods and data sets in parallel.
- Automatically scale to a specific peak, ignore main peaks, or scale to the baseline.
- Supports customization of screen layout based on four predefined configurable layouts.

OpenLAB ChemStation Edition C.01.04

OpenLAB Data Store A.01.01 Supported with CDS

OpenLAB Data Store is a central repository where you can safely archive, store, and share electronic files.

OpenLAB CDS ChemStation Edition and Shared Services support the use of OpenLAB Data Store as the storage location for your scientific data. Use of Data Store storage is supported in networked and distributed configurations of OpenLAB CDS and provides several benefits for your system:

- Central Storage with security for small to medium sized labs
- Handles localized Chinese/Japanese content
- Web based data access for search, share, and review
- 21 CFR 11 Compliant e-signatures and audit trail

Master Installer Updates

- Master Installer now supports installation on top of an existing C.01.03 system resulting in an automatic upgrade.
- Master Installer now supports the installation of either Data Store or ECM for central data storage system components including servers, AICs, and clients.
- Software installation repair is now supported using the repair utility found in the maintenance section of the Master Installer.
- A new additional software installation tool is now available in the maintenance section of the Master Installer. This currently only supports the addition of OpenLAB Data Store components to an AIC or client upgraded from a previous revision.
- Scripted installation of clients and AICs is now supported. An XML file may be exported at the end of installer parameter definition which can then be used to install an identical configuration on other machines.

OpenLAB Control Panel/Shared Services Updates

- Enhancements to the Licensing User Interface
- Generic projects for Data Store
- Authentication for Data Store
- Data Store Synchronization

Updates to the Intelligent Reporting Report Template Editor (RTE)

- User-entered report parameters
- Protection of individual report items in report templates
- Double row table
- Document map
- Export report as DOC and TXT

Method and Sequence Queue

- Single Sample Queuing
- Enhanced options for single run data file naming

Method Download Options at Instrument startup

User options for method download on startup of ChemStation

Data Analysis Improvements

- Calculation of relative retention time, Resolution, Number of theoretical plates, S/N ratio, and Peak-to-valley ratio according to European Pharmacopeia and Japanese Pharmacopeia and reporting of these values using Intelligent Reporting.
- Peak Performance
- Enhancements to Area Summing

Updated Agilent LC Drivers

- Improved status dashboard for enhanced control and interaction
- 1290 Quaternary Pump (G4204A)
- 1220 Infinity LC with DAD (G4294B)
- Flexible Cube (G4227A) (Standalone Driver)
- Universal Interface Box II (G1390B)

Updated Agilent 78xx and 68xx GC Drivers

- Support for the (G4567A) 7650 Injector with 78xx GCs (Version 4.02)
- Method menu item added to extend the run time or change oven temperature during a run for 68xx GC (Version 6.11)

- GC Tray user interface enhanced (RC.NET only)
- Method Audit Trail and Method Resolution Audit Trail.

NEW html-page for accessing OpenLAB Documentation and Manuals

New html-page for OpenLAB CDS Documentation can accessed from the START menu > All Programs > Agilent Technologies > OpenLAB CDS Documentation.

OpenLAB ChemStation Edition C.01.03

Sequence Planner

The **Queue Planner** is used to set up an ordered set of sequences (either ChemStation sequence templates or Easy Sequences) and pauses. The **Queue** Planner allows you to schedule lengthy routine tasks to run overnight or over a weekend.

Updated Agilent LC Driver

- Support for ISET
- RC.NET drivers for single G1364A/B/C and D Automated Fraction Collectors,
- Low-flow Samplers, pumps and valves (G1377A, G1389A, G1376A, G2226, G1162A, G1163A)
- New LC hardware G5664A Bio-inert AFC, 1290 UVD (G1170A),

Updated Agilent GC Drivers

78xx Driver Version 4.02[023]

Updates to Low Thermal Mass II (LTM-II) Rapid Heating/Cooling System for 7890A GC. This release integrates complete control of the Low Thermal Mass II (LTM II) system into the 7890A GC and Chemstation. The added support of ID tags on the LTM II columns allows for automatic configurations loaded in the GC and Chemstation and the ability to track number of runs, over temperatures, and excursions.

68xx Driver Version 6.11[008]

New G3581A 490 micro GC support

OpenLAB ChemStation Edition C.01.02

Agilent OpenLAB ECM connectivity

With the C.01.02 release of OpenLAB CDS ChemStation Edition, ECM is supported as a data storage location. With this feature you get the following enhancements for your data system:

Store and retrieve data directly in the Agilent OpenLAB Enterprise Content Management (ECM) system from the CDS with ECM as a valid storage location and authentication provider.

This provides the following benefits:

- Keyword searches for data, methods and sequences
- Web based data access for sharing and review
- Automated data archival
- Result package version control
- Enhanced security
- Consolidate CDS data with all laboratory content
- Thin client configuration support

Master Installer Updates

Automated uninstall of all OpenLAB CDS components is now available from the master installer.

Support for LC/MS and CE/MS on Workstation and Networked Workstation

New Topology: Distributed Systems (Networked AIC and Clients)

Updated Agilent GC Drivers, 78xx Version 4.01[049], 68xx Version 6.10[027]

- Barcode support with the 68xx Software Driver version 6.10 has been updated to transfer the vial from the barcode reader directly to the turret for injection. The intermediate stop back to the tray location has been eliminated.
- Instrument parameter actuals are now available next to the set points in method edit user interface
- 7890A: Digital Signal Switching, Signal Zero, Signal Freeze/Resume available in the Signal Event Table (7890A requires a minimum Firmware revision of A.01.12.)
- Hide and display the instrument actuals view and graphic plot

- 7890A: Shutdown events such as Hydrogen shutdown now included in Software Status (7890A requires a minimum Firmware revision of A.01.12.)
- Column User interface includes Constant Flow, Constant Pressure, Ramped Pressure, and Constant Flow for the Control Mode selections
- G4514A 7693A tray support for 7820A GC
- Start run from GC by pressing the start button now available for 68xx GC

Agilent Support information

- All instrument sessions come with a support information tool that is started from the Help menu. This is a troubleshooting tool that can be used to collect information about the current status of the system, log software and hardware error messages, and the revision of the operating system. The information is collected in the instrument's Temp folder.
- The tool will not collect names, addresses, or personal information.

OpenLAB ChemStation Edition C.01.01

Intelligent Reporting

OpenLAB CDS provides a new Intelligent Reporting feature for GC and LC ChemStation data. The new intelligent reporting is provided in addition to classic reporting. The new Intelligent Reporting allows you to create state-of-the-art reports in an industry standard reporting format. You can easily create and modify report templates with the new Report Template Editor built into the system that has an easy to use WYSIWYG interface. Report templates are saved in the standardized Report Definition Language (RDL) format that is also used by Microsoft Business Intelligence Studio.

When Intelligent Reporting is activated, a new Review view is available. It allows you to apply any report template to any combination of data files.

OpenLAB Control Panel / OpenLAB Shared Services

OpenLAB Shared Services allow the management of users, instruments and licenses. OpenLAB Shared Services is managed using the OpenLAB Control Panel.

- **Instrument Management:** OpenLAB Control Panel allows you to set up and configure instruments. Instruments are launched from the OpenLAB Control Panel. In addition, the Control Panel provides a lab-at-a-glance overview of the status of the instruments on a workstation or networked workstation.
- **User Management:** OpenLAB Control Panel allows you to manage users, groups, roles, and privileges. If you manage your users within an ECM system or a Windows domain, you can map those existing users into OpenLAB Shared Services.
- **License Management:** This service includes the administration of licenses that are required for your instrument modules and Add-Ons. You can add or remove licenses and view the status of all licenses.

New licensing

With OpenLAB CDS ChemStation Edition, a new licensing strategy is introduced that helps you use your licenses more effectively. All instrument control, driver and Add-on licenses are floating licenses. Any instrument that starts up requests licenses from License Management, and when the instrument is closed, it returns the licenses. The new licensing is based on Flexera Software™ SubScribeNet® technology. It simplifies your software license management and license tracking and allows you to receive new or urgent software and patch download information immediately after release.

New Data Analysis Workflows

OpenLAB ChemStation C.01.01 provides two Data Analysis modes: the Recalculation mode and the

Reprocessing mode. The reprocessing mode allows you to reprocess samples in the context of a sequence (e.g. for a bracketed calibration). The recalculation mode allows you to quickly recalculate a sample or a set of samples with a different method. The required functions associated with each mode are available in separate toolbars.

Result sets: Containers are now called result sets. Methods that are used in result sets may be modified during acquisition. You can create your own result sets using any collection of existing data. You can use the user-assembled result sets, for example, for cross sample calculations.

Method Handling: It is possible to directly load master methods and sequence methods from the ChemStation explorer. The Update Methods dialog box allows you to synchronize master methods and sequence methods.

Software Status and Release Bulletins

The software status bulletin (SSB) documents known limitations and information about available fixes or workarounds for this and previous versions of OpenLAB CDS ChemStation Edition. Please visit our Website for the latest version at

<http://www.chem.agilent.com/Library/Support/Patches/SSBs/M83xxAA.html>

For known issues that have been resolved and/or closed with a workaround, see the Software Release Bulletin file named *M83xxAA-SRB.html* located under the Disk2\Support\History\C.xx.xx folder of the OpenLab CDS ChemStation Edition Installation media.



M8301-90139 Rev B

Part Number: M8301-90139
Edition 6/2018
Edited in Germany

© Agilent Technologies 2010 - 2018
Agilent Technologies
5301 Stevens Creek Blvd.
Santa Clara, CA 95051
USA