

# **Agilent Seahorse BHI Report Generator**

## **User Guide**



**Agilent Technologies**

# Notices

© Agilent Technologies, Inc. 2017

No part of this manual may be reproduced in any form or by any means (including electronic storage and retrieval or translation into a foreign language) without prior agreement and written consent from Agilent Technologies, Inc. as governed by United States and international copyright laws.

## Manual Part Number

103332-400

## Edition

First edition, May 2017

Printed in USA

Agilent Technologies, Inc.  
2850 Centerville Road  
Wilmington, DE 19808-1610 USA

## Warranty

**The material contained in this document is provided “as is,” and is subject to being changed, without notice, in future editions. Further, to the maximum extent permitted by applicable law, Agilent disclaims all warranties, either express or implied, with regard to this manual and any information contained herein, including but not limited to the implied warranties of merchantability and fitness for a particular purpose. Agilent shall not be liable for errors or for incidental or consequential damages in connection with the furnishing, use, or performance of this document or of any information contained herein. Should Agilent and the user have a separate written agreement with warranty terms covering the material in this document that conflict with these terms, the warranty terms in the separate agreement shall control.**

## Technology Licenses

The hardware and/or software described in this document are furnished under a license and may be used or copied only in accordance with the terms of such license.

## Restricted Rights Legend

If software is for use in the performance of a U.S. Government prime contract or sub-contract, Software is delivered and licensed as “Commercial computer software” as defined in DFAR 252.227-7014 (June 1995), or as a “commercial item” as defined in FAR 2.101(a) or as “Restricted computer software” as defined in FAR 52.227-19 (June 1987) or any equivalent agency regulation or contract clause. Use, duplication or disclosure of Software is subject to Agilent Technologies’ standard commercial license terms, and non-DOD Departments and Agencies of the U.S. Government will receive no greater than Restricted Rights as defined in FAR 52.227-19(c)(1-2) (June 1987). U.S. Government users will receive no greater than Limited Rights as defined in FAR 52.227-14

(June 1987) or DFAR 252.227-7015 (b)(2) (November 1995), as applicable in any technical data.

## Safety Notices

### CAUTION

A **CAUTION** notice denotes a hazard. It calls attention to an operating procedure, practice, or the like that, if not correctly performed or adhered to, could result in damage to the product or loss of important data. Do not proceed beyond a **CAUTION** notice until the indicated conditions are fully understood and met.

### WARNING

A **WARNING** notice denotes a hazard. It calls attention to an operating procedure, practice, or the like that, if not correctly performed or adhered to, could result in personal injury or death. Do not proceed beyond a **WARNING** notice until the indicated conditions are fully understood and met.

# Contents

## Introduction

- Assay Parameter Calculations 5
- BHI Background Information 7

## How To

- Configure Excel to Enable Macros 9
- Save Wave Assay Result File in Excel format (\*.xlsx) 10
- Load Excel File into BHI Report Generator 10
- Customize and Review the BHI Report 12

## Advanced Options

- Acute Injection 13
- Post Injection 14
- Number of Basal and Injection Measurements 14
- Outlier Wells 15





# 1 Introduction

Alterations in cellular bioenergetic function are associated with the progression of many diseases, and scientists' understanding of this connection continues to increase at an impressive pace. The Agilent Seahorse XF Cell Mito Stress Test is a standard method for assessing mitochondrial bioenergetic function. The Bioenergetic Health Index (BHI) is a new concept that builds upon this standard, and distills multiple metrics of mitochondrial function into a single value. Now researchers can easily determine an overall value for cellular bioenergetic health. The information in this User Guide describes how BHI is calculated, and how to use the BHI Report Generator to perform this calculation from Seahorse XF Cell Mito Stress Test data.

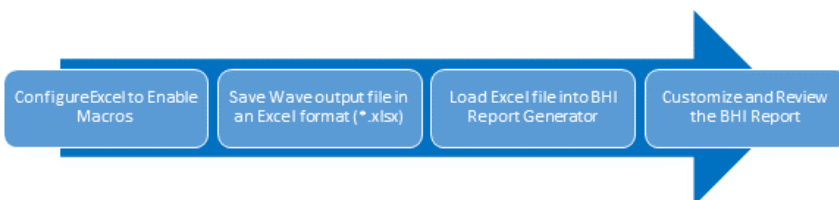


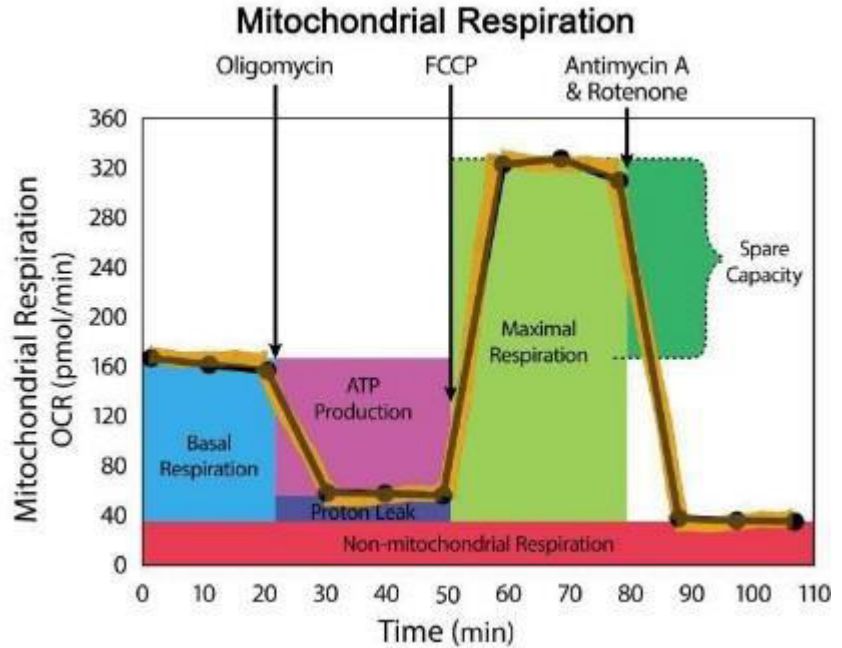
Figure 1 Workflow diagram

## Assay Parameter Calculations

This section describes how the assay parameters are calculated for the Seahorse XF Cell Mito Stress Test. Values are calculated as absolute oxygen consumption rate (OCR) in pmol O<sub>2</sub>/min, or absolute extracellular acidification rates (ECAR) in mph/min, and use the AVERAGE value of the selected wells within a group to calculate a specific parameter (that is, the Seahorse XF Stress Test Report Generators do not use Area-Under-the Curve (AUC) calculations). Contact Agilent Seahorse Technical Support with any questions.



## Agilent Seahorse XF Cell Mito Stress Test parameters



**Figure 2** Agilent Seahorse XF Cell Mito Stress Test Parameters

**Table 1** Agilent Seahorse XF Cell Mito Stress Test Parameters

Parameter	Rate measurement equation used by Agilent Seahorse XF Stress Test Report Generator
Non-Mitochondrial respiration	Minimum rate measurement after Rotenone/antimycin-A injection
Basal respiration	(Last rate measurement before first injection) – (Non-Mitochondrial respiration rate)
Maximal respiration	(Maximum rate measurement after FCCP injection) – (Non-Mitochondrial respiration)
H <sup>+</sup> (Proton) leak	(Minimum rate measurement after Oligomycin injection) – (Non-Mitochondrial respiration)
ATP Production	(Last rate measurement before Oligomycin injection) – (Minimum rate measurement after Oligomycin injection)
Spare respiratory capacity	(Maximal respiration) – (Basal respiration)
Spare respiratory capacity %	(Maximal respiration) / (Basal respiration) ×100
Acute response	(Last measurement rate before Oligomycin injection) – (Last rate measurement before acute injection)
Coupling efficiency	(ATP Production rate) / (Basal respiration rate) ×100

## BHI Background Information

The Bioenergetic Health Index was developed by Dr. Victor Darley-USmar at the University of Alabama at Birmingham. [Figure 3](#) displays the equation on how to calculate BHI values from Seahorse XF Cell Mito Stress Test assay results. For more information, see Dr. Darley-USmar's publication in *Clinical Science* (2014) 127, 367-373 doi: 10.1042/CS20140101

$$\text{BHI} = \frac{(\text{Spare Respiratory Capacity})^a \times (\text{ATP Production})^b}{(\text{Non-Mitochondrial Respiration})^c \times (\text{Proton Leak})^d}$$

The exponents in this calculation are set to a value of 1 in this report generator.

**Figure 3** BHI Equation

## Introduction



## 2 How To

### Configure Excel to Enable Macros

The BHI Report Generator requires Microsoft Excel 2007, 2010, or 2013 for use.

Note: Excel must be configured to allow macros to run. On the yellow information bar, select **Enable Editing** if prompted to do so when opening the Report Generator file for the first time.

#### To Enable macros:

- 1 Launch Excel
- 2 Select **File> Options> Trust Center> Trust Center Settings> Macro Settings> Enable all macros** or **Disable all macros with notification** or **Disable all macros except digitally signed macros**
- 3 Select **Message Bar Settings> Show the message bar in all applications when active content, such as ActiveX controls and macros, has been blocked**

#### NOTE

The BHI Report Generator requires the “**Measure after Injection**” box to remain checked in the assay design file (which is the default setting) to yield correct parameter calculations.



## Save Wave Assay Result File in Excel format (\*.xlsx)

- 1 Open the Seahorse Cell Mito Stress Test Assay results file (\*.asyr) in Wave Desktop.

**NOTE**

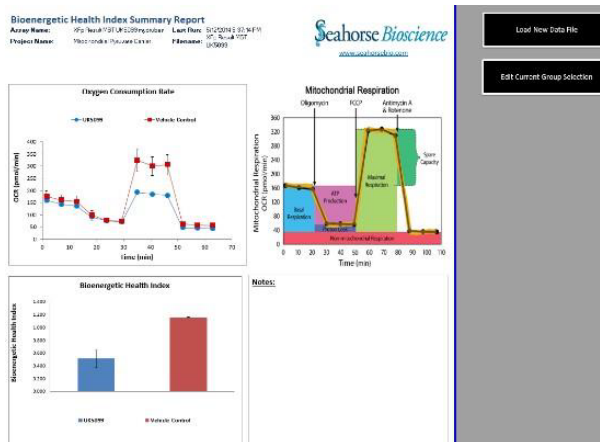
For Seahorse XF24 and XF96 users, convert \*.xfd files to \*.asyr before using the XF Cell Energy Phenotype Test Report Generator.

### To convert files:

- a Open **Wave**
  - b Browse, and select the **.xfd result file**.
  - c Click **Open**.
  - d Click **Save as...** and select **Assay Analyze (\*.asyr)** as the file type.
  - e Rename (if necessary), and select a location to save the file.
  - f Save the .xfd file as an \*.asyr, and proceed to Step 2.
- 2 Click **Save As...** and select **Excel 2007/2010 (\*.xlsx)** as the file type.
  - 3 Follow the prompts to select a name and location for the Excel output file.

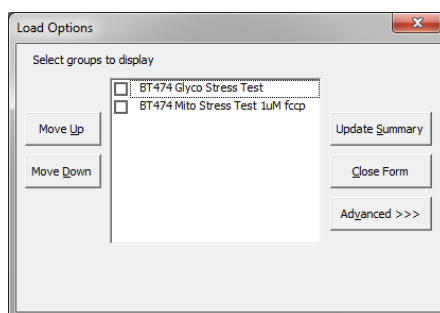
## Load Excel File into BHI Report Generator

- 1 Double-click on the desktop icon to open the BHI Report Generator.
- 2 Click **Load New Data File** on the **Summary Report** to import XF assay data into the Report Generator (see [Figure 4](#)).



**Figure 4** Summary Report screen

- 3 Browse and select the Excel file (from Section II), and click **Open**.
- 4 In the **Display Options** window, select one or two groups to display in the report as well as the error bar type (see [Figure 5](#)).



**Figure 5** Update Summary

- 5 Click **Update Summary**, and when the **Success!** Window appears, click **OK**.

### Optional normalization steps:

- 1 Select normalization data to apply to Report Generator data.
  - a From **Wave Desktop** - Open an Assay Result file (.asyr) and from the **Overview** page, select **Modify**> **Normalization**.
  - b From **Microsoft Excel** – Open an Excel file, select data to input, right-click, and select **Copy**.
- 2 Click **Select All**.
- 3 In the **Report Generator**, select the **Normalization** tab at the bottom of the program.
- 4 Right-click, and select **Paste**.
  - Normalization data may also be manually entered into the Normalization Table. Input the Normalization Unit prior to clicking **Normalize Data**.
- 5 Click **Normalize Data**.
- 6 Select the groups to apply the normalization data, and view in the report generator.
- 7 Click **Update Summary**.
- 8 Click **OK**.

#### NOTE

Background wells must have a "1" entered into the Normalization Table. Values of "0" are not supported.

## Customize and Review the BHI Report

The report includes five tabs: Summary Printout, Bar Charts, Normalize, Measures Sheet, and “How to...”

- **Summary Printout:** One-page graphical summary of the OCR kinetic graph, BHI Bar Charts and Notes section.
- **Bar Charts:** Individual Seahorse Cell Mito Stress Test parameter calculations data represented as bar charts.
- **Normalize:** Input Normalization Data and a Normalization Unit to normalize XF assay data to cellular or mitochondrial parameters.
- **Measures Sheet:** Displays the kinetic graphs of both OCR and ECAR, the raw values for each bar chart on the Bar Charts page, and a list of all excluded wells from the Report Generator.

### NOTE

For any individual well, a negative value for any individual parameter (for example, ATP linked, Spare Respiratory Capacity, or Non-mitochondrial Respiration) results in exclusion of the well.

- **How to...:** Instructions on how to use the BHI Report Generator.

Customize the charts if desired, then click **Save As**. Rename and select a location to save the file. Refer to “[Assay Parameter Calculations](#)” on page 5 for Assay Parameter Calculation discussion.

### NOTE

Saving the Report Generator as any file other than the default (\*.xslm) will render the Excel Macro inoperable, thus data cannot be imported again. If this occurs, simply locate the original Report generator file or download again from the Seahorse website.



## 3 Advanced Options

The BHI Report Generator uses the data in the Excel Wave Output file to automatically populate the Advanced Options fields. If a fourth injection is detected, the Report Generator will display a **Load Options** window with a **Supplemental Injection** selection. If there are four injections in the assay protocol, the BHI Report Generator will assume the 4th injection is an Acute injection, but have the option to select **Post** when selecting groups in the Load Options box. (see [Figure 6](#)).

**Figure 6** Acute and Post Injection Options

### Acute Injection

An injection that occurs in the assay protocol following the basal measurement, but before oligomycin in the Seahorse XF Cell Mito Stress Test and must be injected in Port A.

Note: Acute injections of test compounds in B, C, or D will result in inaccurate XF stress test parameter calculations.



## Post Injection

An injection that occurs in the assay protocol following the completion of the Seahorse XF Cell Mito Stress Test. Must be injected in Port D.

Note: Rates from the Post Injection measurements are not displayed in the BHI Report Generator. These measurements are not related to any parameter as described in [Table 1](#) on page 6 for the Seahorse XF Cell Mito Stress Test, and are not part of the BHI calculation.

## Number of Basal and Injection Measurements

The number of measurements before and after each injection is automatically assigned in the report generator based on the Instrument Protocol set up in the assay design. Users may re-assign the number of measurements in the **Advanced** section of **Load Options** as necessary (see [Figure 7](#)).

The screenshot shows a dialog box titled "Load Options" with a close button in the top right corner. Inside the dialog, there is a section "Select groups to display" with two checkboxes: "BT474 Glyco Stress Test" and "BT474 Mito Stress Test 1uM fccp". To the left of this list are "Move Up" and "Move Down" buttons. To the right are "Update Summary", "Close Form", and "Advanced <<<" buttons. Below this section, a message states: "This assay has 12 measurements. Correct measurements as needed then click on Update Summary". Underneath, there are five rows of measurement counts, each with a text input field: "Basal Measurements" (3), "Injection 1 Measurements" (3), "Injection 2 Measurements" (3), "Injection 3 Measurements" (3), and "Injection 4 Measurements" (0). At the bottom, there is an "Error Bar Type" section with two radio buttons: "Standard Error" and "Standard Deviation", with "Standard Deviation" selected.

**Figure 7** Measurement Adjustment

**Error Bar Information:**

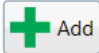
- Standard Deviation is selected by default. Users may also choose Standard Error of the Mean.
- Standard Deviation is calculated using the Microsoft Excel function.
- Standard Error of the Mean is calculated using the equation:

$$\frac{\text{(Standard Deviation of Group)}}{\sqrt{\text{(Number of Wells in Group)}}$$

- Error Bars for the Seahorse XF Cell Mito Stress Test Parameters shown on the Bar Chart tab are calculated from each replicate of the rate measurement used to determine the stress test parameter (See [Table 1](#) on page 6).
- BHI Error Bars are calculated from each replicate of the rate measurement.
- Each individual well per group will have a BHI value calculated which has no error. The error is then calculated based on the standard deviation of the BHI per well within the group.

**Outlier Wells**

Outliers or unwanted wells may be excluded from the BHI Report Generator parameter calculations by reassigning them from their original group in Wave before saving the file to Excel.

- 1 From the **Wave Overview Page**, click **Modify** in the upper right corner, then select **Groups/Conditions**.
- 2 In the **Groups/Conditions** view, click  to add a new group and name it **Outliers**. Switch to the Plate Map view, and select the wells to be included in the Outliers group
  - a Click **Apply**. Select **Save As**, and set the file type to **Excel 2007/2010 (\*.xlsx)**.
  - b Load the Wave Excel output file into the XF Stress Test Report Generator.

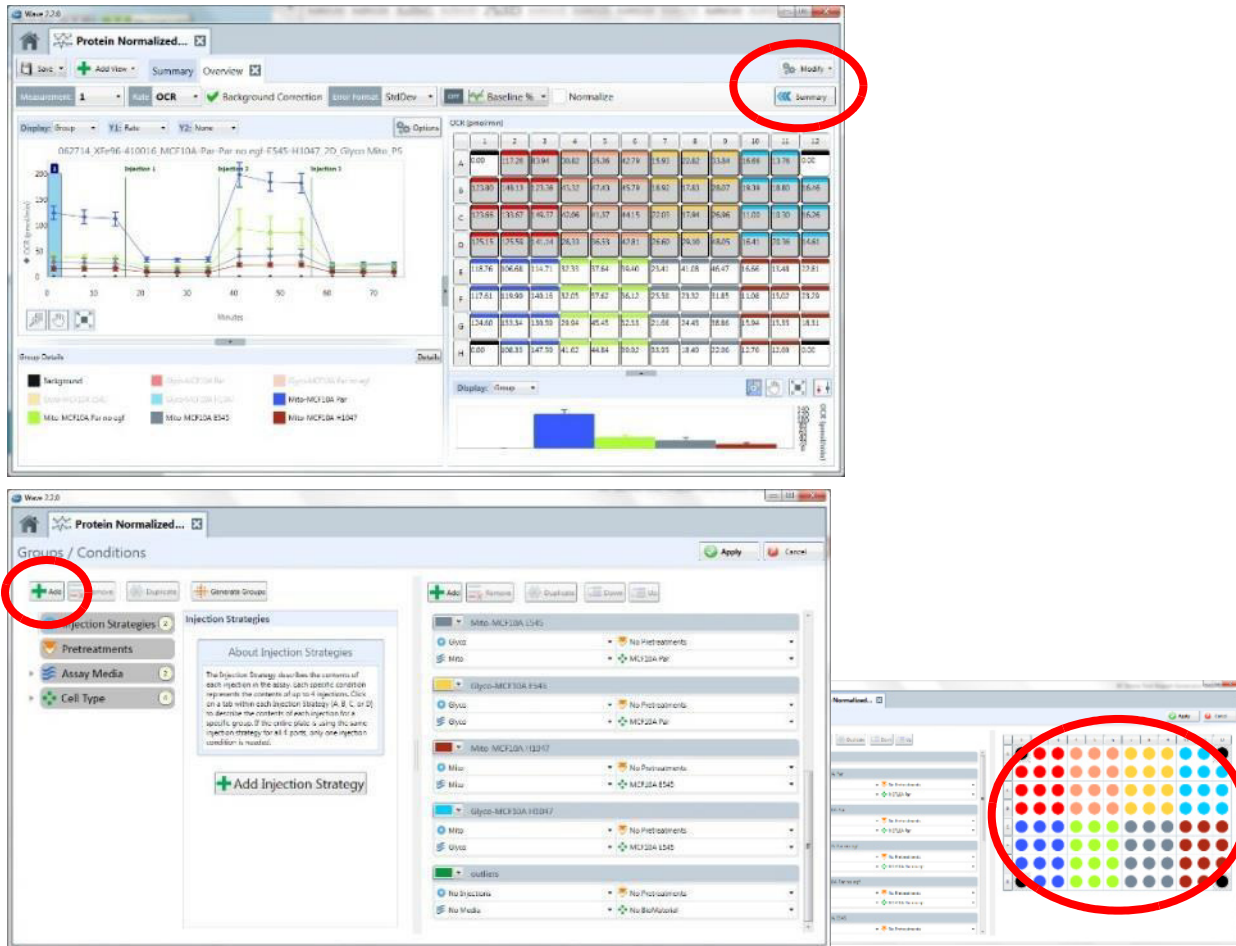


Figure 8 Outlier wells

- 3 The Wave Excel output file will list the newly created Outlier group in the Load Options window.

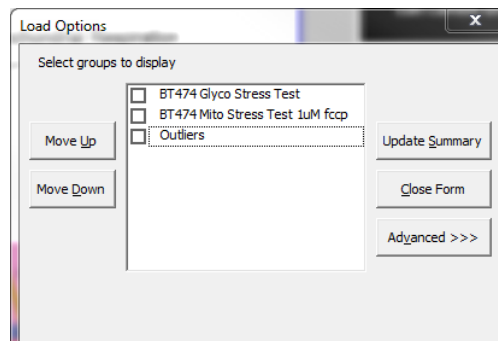


Figure 9 Outlier Group

**NOTE**

Ensure the Outliers group is unchecked in the Load Options window so the outliers are omitted from the calculations.





**Agilent Technologies**

© Agilent Technologies, Inc.

Printed in USA, May 2017

For research use only

Not for use in diagnostic procedures



**103332-400**