

Agilent Enrichment and Desorption Unit Coupling to the Agilent 990 Micro GC

EDU Quick Start Guide



Notices

© Agilent Technologies, Inc. 2019

No part of this manual may be reproduced in any form or by any means (including electronic storage and retrieval or translation into a foreign language) without prior agreement and written consent from Agilent Technologies, Inc. as governed by United States and international copyright laws.

Manual Part Number

G3588-90016

Edition

First edition, August 2019

Printed in China

Agilent Technologies, Inc.
412 Ying Lun Road
Waigaoqiao Free Trade Zone
Shanghai 200131 P.R.China

Warranty

The material contained in this document is provided “as is,” and is subject to being changed, without notice, in future editions. Further, to the maximum extent permitted by applicable law, Agilent disclaims all warranties, either express or implied, with regard to this manual and any information contained herein, including but not limited to the implied warranties of merchantability and fitness for a particular purpose. Agilent shall not be liable for errors or for incidental or consequential damages in connection with the furnishing, use, or performance of this document or of any information contained herein. Should Agilent and the user have a separate written agreement with warranty terms covering the material in this document that conflict with these terms, the warranty terms in the separate agreement shall control.

Technology Licenses

The hardware and/or software described in this document are furnished under a license and may be used or copied only in accordance with the terms of such license.

Restricted Rights Legend

U.S. Government Restricted Rights. Software and technical data rights granted to the federal government include only those rights customarily provided to end user customers. Agilent provides this customary commercial license in Software and technical data pursuant to FAR 12.211 (Technical Data) and 12.212 (Computer Software) and, for the Department of Defense, DFARS 252.227-7015 (Technical Data -Commercial Items) and DFARS 227.7202-3 (Rights in Commercial Computer Software or Computer Software Documentation).

Safety Notices

CAUTION

A CAUTION notice denotes a hazard. It calls attention to an operating procedure, practice, or the like that, if not correctly performed or adhered to, could result in damage to the product or loss of important data. Do not proceed beyond a CAUTION notice until the indicated conditions are fully understood and met.

WARNING

A WARNING notice denotes a hazard. It calls attention to an operating procedure, practice, or the like that, if not correctly performed or adhered to, could result in personal injury or death. Do not proceed beyond a WARNING notice until the indicated conditions are fully understood and met.

Agilent EDU Quick Start Guide

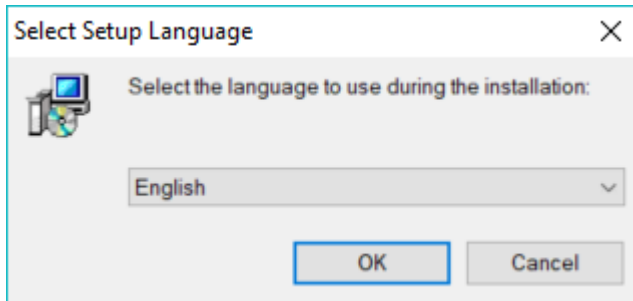
Coupling to the Agilent 990 Micro GC

This Quick Start guide describes how the Enrichment and Desorption Unit (EDU) is coupled to the Agilent 990 Micro GC. For more information about the EDU or 990 Micro GC, refer to the corresponding user manuals.

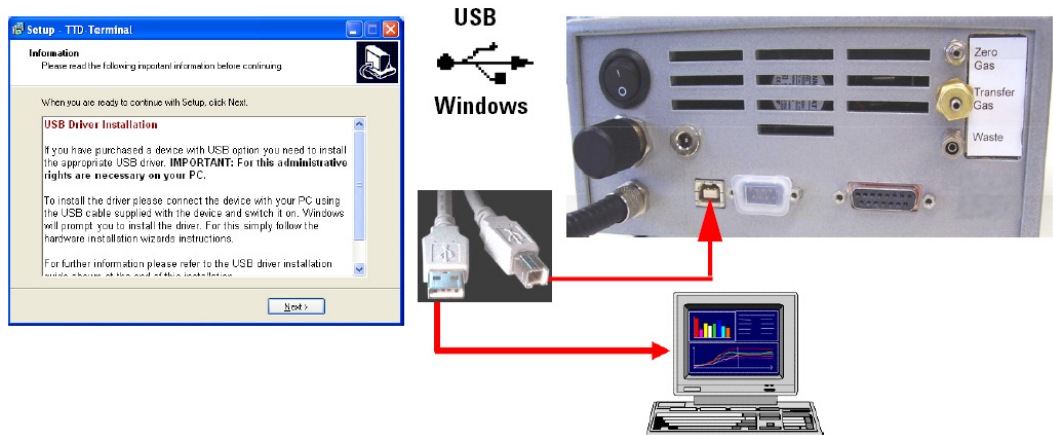
- 1 Insert the installation CD.



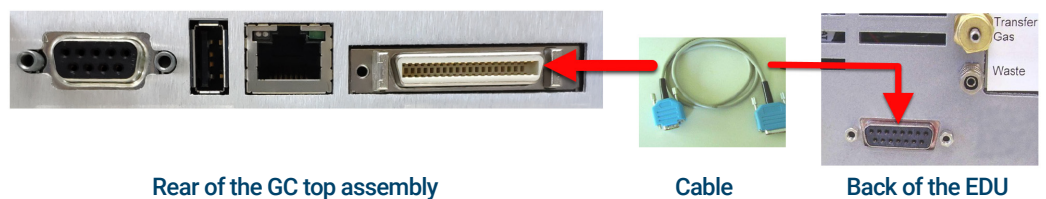
- 2 Run **setup.exe**, select a language, and follow the setup instructions.



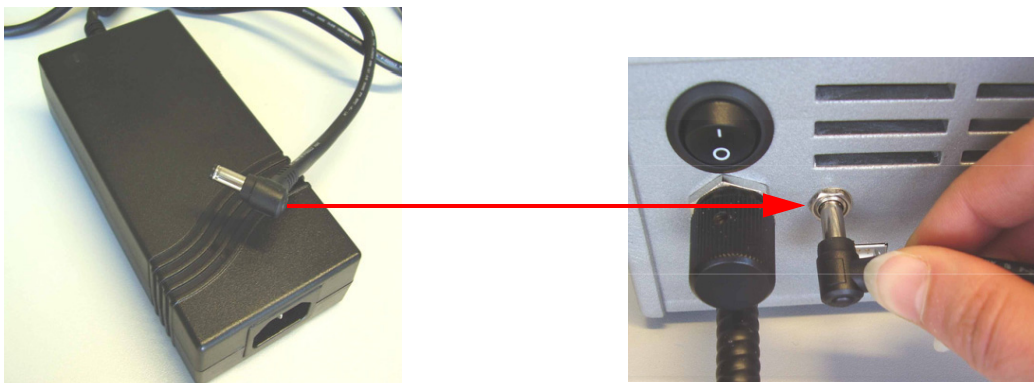
- 3 Follow the setup program to install the USB interface.



- 4 Connect the digital interface.



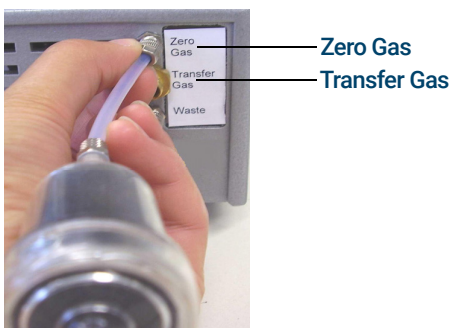
- 5 Connect the external power supply (15 VDS).



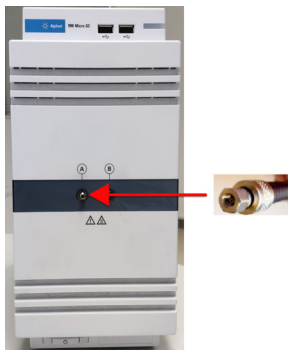
- 6 Connect the Sample in line.



- 7 Connect the Gas connections.
- a Couple the active charcoal filter to the Zero Gas port.
 - b Connect clean carrier gas, He or N₂ at max 550 kPa to the Transfer Gas port.



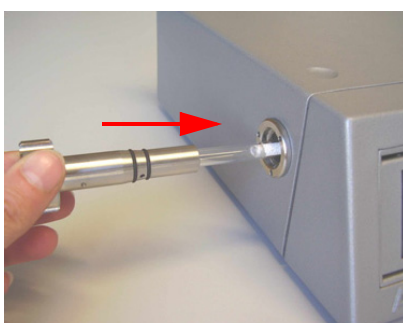
- 8 Connect the Transfer Line from the EDU to the Front Sample Inlet Port on the 990 Micro GC.



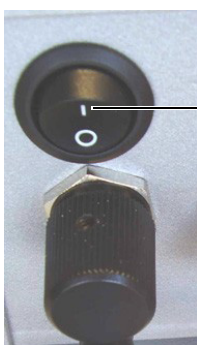
- 9 Insert the adsorption tube.



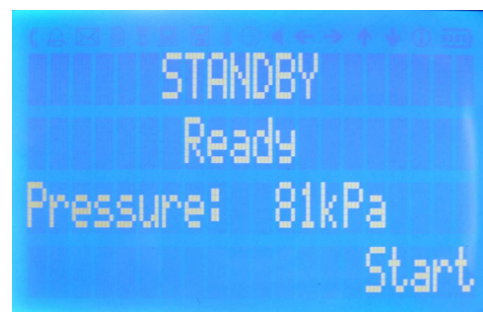
- 10 Shut the tube holder by turning it clockwise.



- 11 Turn on the EDU with the Main Switch. Wait until the instrument finishes the self check procedure, and is ready for operation in Standby-mode.



Main Switch
(On/Off)
Back view of the instrument



Please read the User Manual on the CD for more support.

www.agilent.com

© Agilent Technologies, Inc. 2019

First edition, August 2019



G3588-90016

