



Agilent MassHunter Workstation— Offline Qualitative and Quantitative Analysis for GC/MS

Installation Guide

- Step 1. Prepare for installation 2
- Step 2. Install the Qualitative Analysis program 3
- Step 3. Install the Quantitative Analysis program 5
- Step 4. Install and configure Microsoft Excel 8
- Step 5. Install the Quantitative Reporting program 10
- Step 6. Install the Quantitative Analysis Supplemental files 13
- Step 7. Check Microsoft Excel for MassHunter Reporting Add-Ins 14
- Step 8. Install the Quantitative Analysis Compliance program 16

Use this guide to install or upgrade MassHunter Workstation software.

This guide applies to and supports the installation of only:

- MassHunter Qualitative Analysis B.06.00 SP1 and later, until superseded
- MassHunter Quantitative Analysis B.07.00 and later, until superseded
- 64-bit Windows 7 Professional SP1. Do not use Windows XP or Windows Vista.
- Microsoft Excel 2010 or 2013 and Microsoft Office 2010 or 2013

CAUTION

MassHunter and Microsoft Excel software must be installed and set up in the order described in this guide, or the printing of reports will fail.



Step 1. Prepare for installation

CAUTION

Do not remove programs that need only service pack installation.

1 If this installation is an upgrade, use the **Uninstall Programs** command in **Control Panel** to remove the following programs that you will be upgrading, if they are installed on your system.

- Microsoft Excel 2010 (or earlier) or Microsoft Office 2010 (or earlier)
- Agilent MassHunter Workstation Qualitative Analysis
- Agilent MassHunter Workstation Quantitative Analysis B.05.00 or earlier

Some of these programs require a reboot when you remove them. Wait until all of the programs are removed before you reboot your computer.

2 Run **Windows Update** to ensure you have the latest critical updates and security fixes.

- Click **Start > Control Panel > System and Security > Windows Update**.

3 Verify Windows Update is completed before you continue.

CAUTION

If you do not run Windows Update, your system may be vulnerable to security problems. Confirm that the LAN power management has not been reactivated by a Windows Update program.

Step 2. Install the Qualitative Analysis program

Do this step if you want to install the Qualitative Analysis program. If you are installing just the service pack, go directly to [step 12](#).

- 1 Verify that no other program is running on your system, including Windows Update.

Installation of the Qualitative Analysis program will fail if Windows Update is running, even in the background.

- 2 From the installation DVD, right-click **setup**, and then click **Run as administrator**.
- 3 If **Windows User Account Control** asks for permission before continuing with the installation, click **Yes**.
- 4 In the **Welcome** page, click **Next** to continue with the installation.
- 5 In the **License Agreement** page, review the terms and choose **I accept the terms in the license agreement** to continue the installation, then click **Next**.
- 6 In the **Choose destination location** page, the default is **C:\Program Files\Agilent\MassHunter\Workstation\Qual\B.06.00**. Click **Change** to choose a different location. Click **Next** once the location is set.
- 7 In the **Choose Customer Data Files Location** page, the default location is **D:\MassHunter**. Click **Change** to choose a different location. Click **Next** once the location is set.

Note that some default worklists and methods expect customer data to be in **D:\MassHunter**. If the customer data folder is set to a different location, users can get an error indication when they open these methods and worklists.

- 8 In the **Ready to install** page, review the settings, and then click **Install**.
- 9 If you get a message that indicates that the screen resolution is not set to the required resolution, click **OK**.
- 10 If you see a Notepad window that prompts you to install other options, close the Notepad window.
- 11 In the **Completed** page, click **Finish**.

Step 2. Install the Qualitative Analysis program

12 If the **Service Packs** folder exists on the installation DVD:

- a** Open the **Service Packs** folder. If the folder contains another folder, such as **SP1**, open that folder.
- b** Double-click the installation file, ending with **SPx.msi**.
- c** Follow the instructions to install the service pack.

Step 3. Install the Quantitative Analysis program

Do this step if you want to install Quantitative Analysis version B.07.00 or to upgrade version B0.6.00 to B.07.00.

If you have already installed Quantitative Analysis version B.07.00 without the Compliance program and want to add the Compliance program now, go directly to “[Step 8. Install the Quantitative Analysis Compliance program](#)” on page 16.

If you are installing just the service pack, go directly to [step 16](#).

- 1 Verify that no other program is running on your system. Installation of the Quantitative Analysis program will fail if Windows Update is running, even in the background.
- 2 From the Quantitative Analysis Disk 1/2 installation DVD, right-click **Setup_Quant**, and then select **Run as administrator**.
- 3 If **Windows User Account Control** asks for permission before continuing with the installation, click **Yes**.
- 4 When prompted, select the language for the installation.
- 5 If prompted, select **Install** in the **Agilent Installation Qualification Tool** dialog box.
- 6 In the **Welcome** page, click **Next** to continue with the installation.
- 7 In the **License Agreement** page, review the terms and choose **I accept the terms in the license agreement** to continue the installation, then click **Next**.
- 8 In the **Destination Folder** page, the default is **C:\Program Files\Agilent\MassHunter\Workstation\Quant**. Click **Change** to choose a different location. Click **Next** once the location is set.
- 9 In the **Customer Data Folder** page, the default location is **D:\MassHunter**. Click **Change** to choose a different location. Click **Next** once the location is set.

Some default worklists and methods expect customer data to be in **D:\MassHunter**. If the customer data folder is set to a different location, users can get an error indication when they open these methods and worklists.

Step 3. Install the Quantitative Analysis program

10 In the **Setup Type** page, choose a **Typical**, **Complete**, or **Custom** setup, and then click **Next**.

A **Typical** installation installs the basic Quantitative Analysis software.

A **Complete** installation installs the basic Quantitative Analysis software, Quantitative Analysis Compliance software and the TPH and Blank Subtraction add-ins.

A **Custom** installation presents you with an additional **Custom Setup** page that allows you to view the program components and choose which to install.

11 In the **Ready to Install the Program** page, click **Install** to begin. The **Installing Agilent MassHunter Workstation Quantitative Analysis** window is displayed.

12 In the **Choose Icons** window, mark the check boxes for the instruments that apply. See (Figure 1).

After installation, you can change which icons are displayed by selecting **Start > All Programs > Agilent > MassHunter Workstation > Quant Tools > Setup Desktop Icons**.

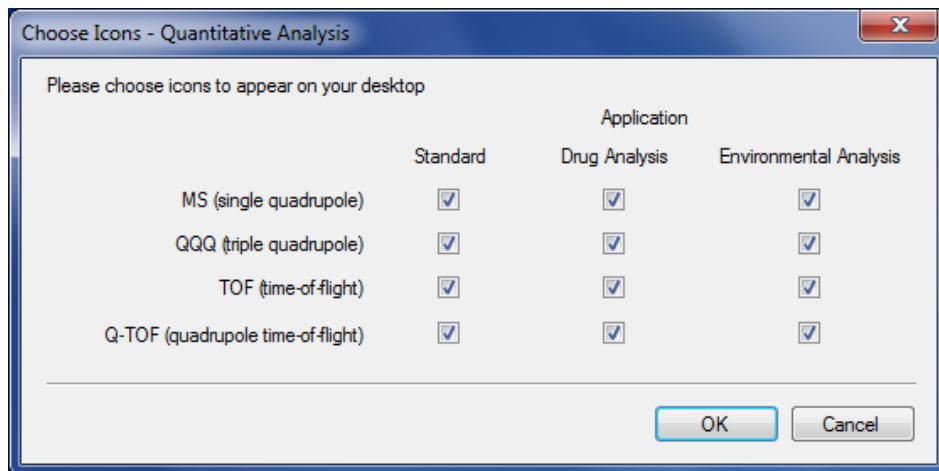


Figure 1 Choose Icons window

13 Click **OK**.

Step 3. Install the Quantitative Analysis program

14 When the **Completed** page is displayed, click **Finish**.

15 Confirm that the icons you selected, as well as **Library Editor** and **Unknowns Analysis**, appear on your desktop.



Figure 2 Desktop icons

16 If the **Service Packs** folder exists on the installation DVD:

- a Open the **Service Packs** folder. If the folder contains another folder, such as **SPI**, open that folder.
- b Double-click the installation file, ending with **SPx.msi**.
- c Follow the instructions to install the service pack.

Step 4. Install and configure Microsoft Excel

Do this step if you want to upgrade and configure Microsoft Excel software to run with your MassHunter program.

MassHunter supports only Microsoft Excel 2010 or later, or Microsoft Office 2010 or later.

- 1** Close all MassHunter Workstation programs.
- 2** Start the installation:
 - a** Follow the instructions that came with the Microsoft Excel or Microsoft Office software or Product Key to start the installation.
 - b** If you are prompted to enter the Product Key, do so.

If you do not enter the Product Key now, Microsoft Excel reminds you later, which can interfere with report automation.

The Product Key must be verified to activate your Microsoft product. Automatic verification requires an Internet connection. If your system does not have access to the Internet, the Activation Wizard starts and allows you to verify by telephone.
 - c** Click **Customize**.

- 3 Ensure that these options, which are required by MassHunter to run reports, are enabled for installation. If not, click the program name and click **Run all from My Computer**.
 - **Microsoft Excel**
 - **Office Shared Features > Visual Basic for Applications**
 - **Office Tools**

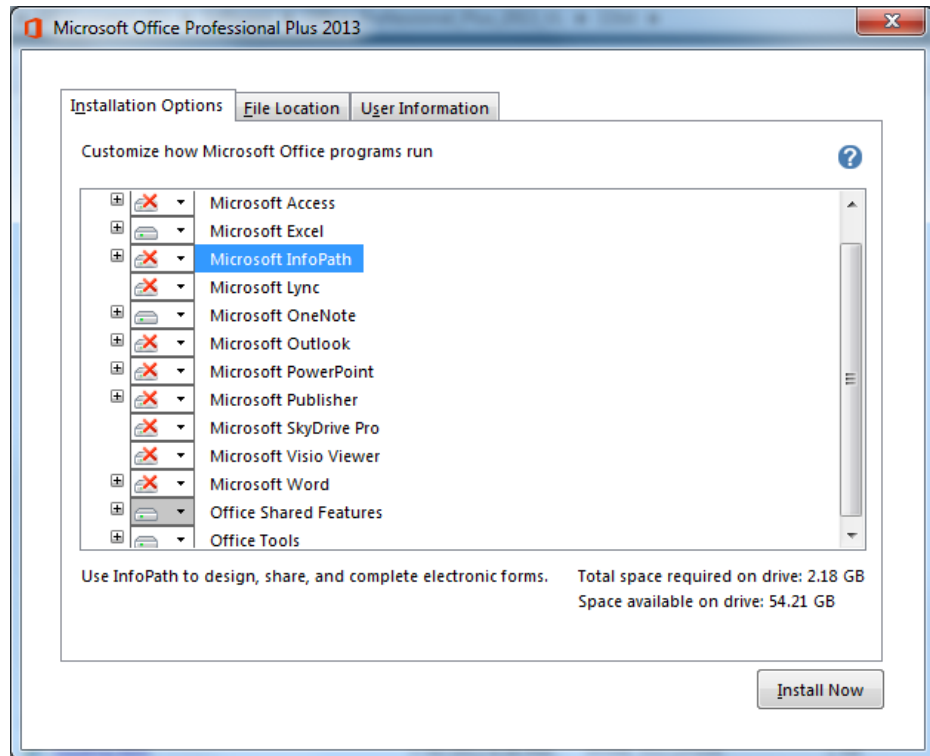


Figure 3 Microsoft Office installation options. For Microsoft Excel, you see only Microsoft Excel, Office Shared Features and Office Tools.

- 4 Click **Install Now** and continue the installation as instructed.
- 5 If you are prompted to get updates, click **Go to Office Online**. Follow the instructions to update Microsoft Excel or Microsoft Office.

Step 5. Install the Quantitative Reporting program

Do this step only if you need to upgrade your Quantitative Analysis Reporting program. If you are installing just the service pack, go directly to [step 10](#).

- 1 Verify that no other program is running on your system. Installation of the Quantitative Analysis Reporting program will fail if Windows Update is running, even in the background.
- 2 From the Quantitative Analysis Disk 1/2 installation DVD, right-click **Setup_QuantReport** and then click **Run as administrator**.
- 3 When prompted, select the language for the installation.
- 4 In the **Welcome** page, click **Next** to continue with the installation.
- 5 In the **License Agreement** page, review the terms and choose **I accept the terms of the license agreement** to continue the installation, and then click **Next**.
- 6 In the **Destination Folder** page, the default is **D:\MassHunter\Report Templates\Quant**. Click **Change** to choose a different location. Click **Next** once the location is set.
- 7 In the **Setup Type** page, choose a **Typical**, **Complete**, or **Custom** setup and then click **Next**.

A **Typical** or **Complete** installation will install all the program components and will require the most disk space.

A **Custom** installation presents you with an additional **Custom Setup** page that allows you to view the program components and their size so you can choose which to install.

- 8 In the **Ready to Install the Program** page, click **Install** to begin. The **Installing Agilent MassHunter Workstation Quantitative Analysis Reporting** page is displayed.
- 9 In the **Completed** page, click **Finish**.

10 If a service pack is available:

- a** If the folder **Service Packs** exists on the installation DVD, then open the **Service Packs** folder. If the folder contains another folder, such as **SP1**, open that folder.

As an alternative, the service pack file can be provided to you by an Agilent representative or support service.

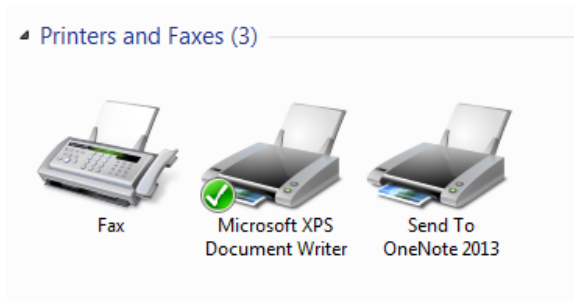
- b** Locate the installation file, ending with **Reporting_SPx.exe**.
- c** Right-click the installation file and click **Run as administrator**.
- d** Follow the instructions to install the service pack.

11 Ensure the appropriate print drivers are installed.

- To use the HP LaserJet P3005d or P3015d printer, install the print driver from <http://welcome.hp.com/country/us/en/support.html>.
- To print reports in the A4 format to HP PCL6 printers, install the printer driver patch from <http://support.microsoft.com/kb/935843>.
- To use the Canon LBP3310 printer for Japanese Windows, install the printer driver from the installation DVD.

12 Set the Microsoft XPS Document Writer as the default printer:

- a** Click **Start > Devices and Printers**.
- b** Right-click **Microsoft XPS Document Writer** and click **Set as Default Printer**.



CAUTION

If no printer is set up as the default printer, reporting can fail.

If you installed Microsoft Excel 2013 or Microsoft Office 2013, you must change the default printer to **Microsoft XPS Document Writer**. These products automatically install Microsoft OneNote and set the default printer to OneNote. OneNote breaks some Excel report formats and causes extra pages to be printed.

Step 5. Install the Quantitative Reporting program

The Microsoft XPS Document Writer formats the Microsoft Excel workbooks three to four times faster for networked printers because the formatting page set-up information is stored on the local computer. The report is processed by the Microsoft XPS Document Writer, but it is actually printed on the printer selected in the MassHunter program.

Step 6. Install the Quantitative Analysis Supplemental files

Do this step if you want to copy these files to your computer from the installation DVD:

- Manuals
- Report template index
- Technical videos
- Data

- 1** From the Quantitative Analysis Disk 2/2 installation DVD, right-click **Setup_Supplemental**, and click **Run as administrator**.
- 2** If **Windows User Account Control** asks for permission before continuing with the installation, click **Continue** or **Yes**.
- 3** When prompted, select the language for the installation.
- 4** In the **Welcome** page, click **Next** to continue with the installation.
- 5** In the **License Agreement** page, review the terms and choose **I accept the terms of the license agreement** to continue the installation, and then click **Next**.
- 6** In the **Destination Folder** page, the default location is **D:\MassHunter**. Click **Change** to choose a different location for the supplemental items. Click **Next** when the location is set.
- 7** In the **Setup Type** page, choose **Complete** or **Custom** setup and then click **Next**.

A **Complete** installation installs all the available components and requires the most disk space.

A **Custom** installation presents you with an additional **Custom Setup** page that allows you to view the components and their size so you can choose which to install.

- 8** In the **Ready to Install the Program** page, click **Install** to begin.
- 9** In the **Completed** page, click **Finish**.
- 10** To view the supplemental materials, click **Start > All Programs > Agilent > MassHunter Workstation > Quant Supplemental**.

Step 7. Check Microsoft Excel for MassHunter Reporting Add-Ins

Step 7. Check Microsoft Excel for MassHunter Reporting Add-Ins

- 1 Close all MassHunter Workstation programs.
- 2 Start Microsoft Excel. If you are warned that Microsoft Excel is unable to find a MassHunter Add-In, click **OK**.
- 3 Click **File > Options** to open the **Add-Ins** dialog box. See [Figure 4](#).

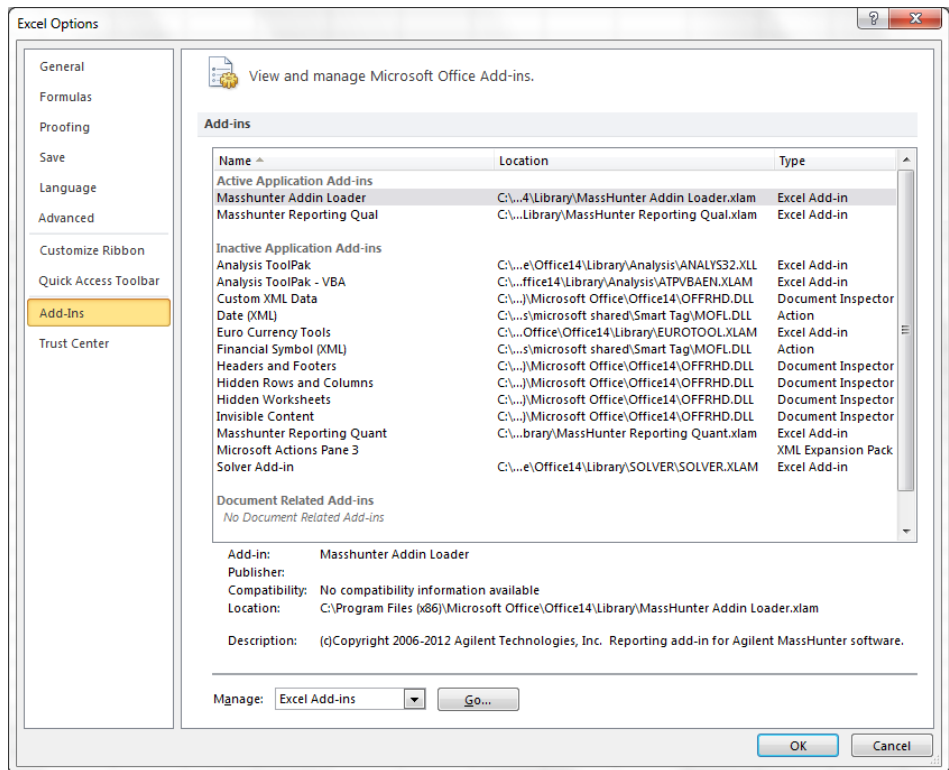


Figure 4 Excel Options Add-Ins page

- 4 From the navigation pane, click **Add-Ins**.
- 5 From the **Manage** list, select **Excel Add-ins**, and then click **Go**.

Step 7. Check Microsoft Excel for MassHunter Reporting Add-Ins

- 6 Ensure that the check box for **Masshunter Addin Loader** is marked, and that the two MassHunter reporting add-ins are listed. See [Figure 5](#).

Only **Masshunter Addin Loader** needs to be selected. When you open a report template, the appropriate MassHunter reporting add-in is automatically enabled.

If either reporting add-in is not listed, check that all software and service packs (if any) are correctly installed.

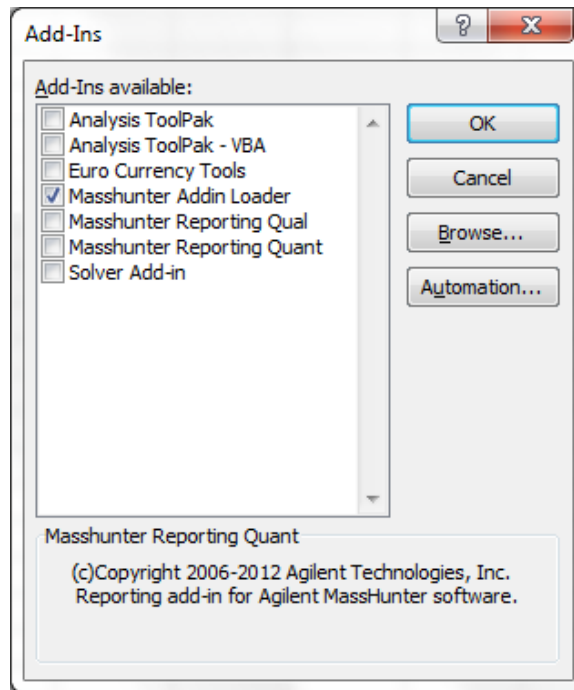


Figure 5 **Masshunter Addin Loader** check box marked for a MassHunter installation.

Step 8. Install the Quantitative Analysis Compliance program

Step 8. Install the Quantitative Analysis Compliance program

Do this step if you have already installed Quantitative Analysis version B.07.00 without the Quantitative Analysis Compliance program and want to add it now.

- 1 Verify that no other program is running on your system. Installation of the Quantitative Analysis program will fail if Windows Update is running, even in the background.
- 2 From the Quantitative Analysis Disk 1/2 installation DVD, right-click **Setup_Quant**, and then select **Run as administrator**.
- 3 When prompted, select the language for the installation.
- 4 If **Windows User Account Control** asks for permission before continuing with the installation, click **Continue** or **Yes**.
- 5 In the **Welcome** page, click **Next** to continue with the installation.
- 6 In the **Program Maintenance** page, choose **Modify**, and then click **Next**.
- 7 In the **Custom Setup** page, **Compliance** list, choose **This feature, and all subfeatures, will be installed on local hard drive** and click **Next**. See [Figure 6](#).

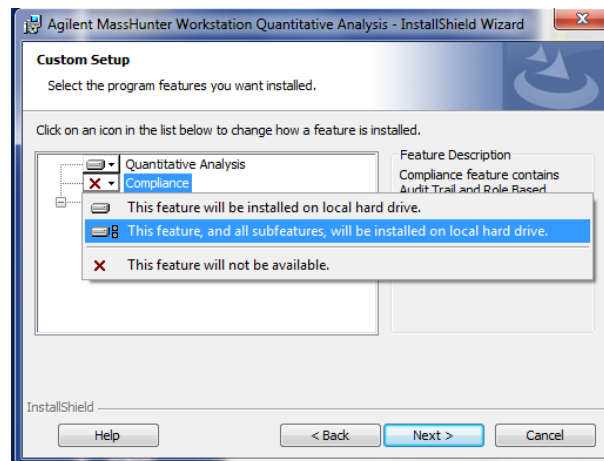


Figure 6 Compliance list

- 8 In the **Ready to Install the Program** page, click **Install** to begin.
- 9 In the **Completed** page, click **Finish**.

Step 8. Install the Quantitative Analysis Compliance program

www.agilent.com

In This Book

This book contains installation instructions to install or upgrade an offline copy of the Agilent MassHunter Workstation Software.

Microsoft®, Windows 7®, Windows XP®, Windows Vista®, and Excel® are registered trademarks of Microsoft Corporation in the US and/or other countries.

© Agilent Technologies, Inc. 2014

Printed in USA
Revision B, January 2014



G3335-90158



Agilent Technologies