



Epoxy Resin Analysis Without Exclusion

Agilent PLgel 5 μm MIXED-D Columns

Technical Overview

Introduction

The PLgel 5 μm MIXED-D column is specifically designed for the analysis of polymers, paints and resin systems where material above 400,000 MW is unlikely to be present. High pore volume, concentrated in this operating range, combined with the 5 μm efficiency, provides excellent resolution for low MW polymers and oligomers. Two, or even three, PLgel 5 μm MIXED-D columns are the perfect replacement for the popular $10^4/500 \text{ \AA}$ or $10^4/10^3/500 \text{ \AA}/100 \text{ \AA}$ column combinations.



Agilent Technologies

The resolving range of the PLgel 5 μ m MIXED-D column prevents exclusion of the higher molecular weight epoxies while maintaining good resolution of oligomeric species due to the high efficiency of the columns.

Column: 2 x PLgel 5 μ m MIXED-D, 300 x 7.5 mm
(part number PL1110-6504)
Eluent: THF
Flow Rate: 1.0 mL/min
Detection: RI

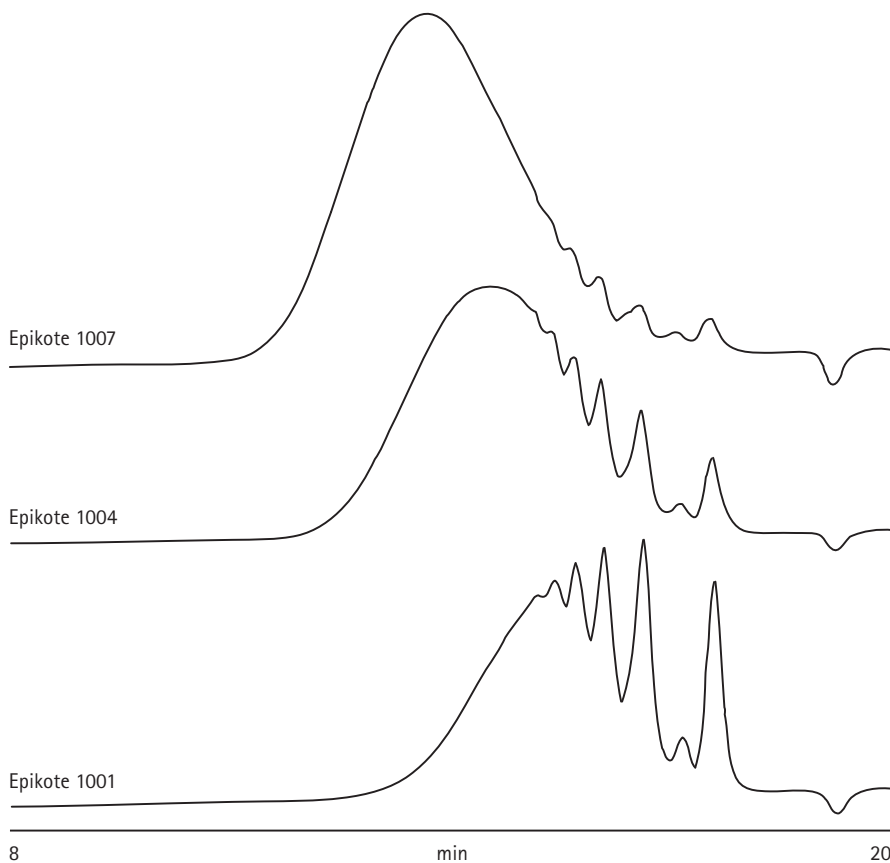


Figure 1. Analysis of epoxy resins using a PLgel 5 μ m MIXED-D column set

www.agilent.com/chem

This information is subject to change without notice.

© Agilent Technologies, Inc. 2010

Published in UK, September 21, 2010

SI-01830



Agilent Technologies