

Agilent 1260 Infinity III Analytical SFC System Installation Instructions

Checkout Procedure

This technical note describes the checkout procedure for the 1260 Infinity III SFC System.

Introduction

Exemplary configuration:

- 1260 Infinity III SFC Control Module (G4301A)
- 1260 Infinity III SFC Binary Pump (G4782A)
- 1260 Infinity III SFC Multisampler (G4767A)
- 1260 Infinity III Multicolumn Thermostat (G7116A)
- 1260 Infinity III Diode Array Detector WR (G7115A)

The 5799-0014 (SFC checkout sample) contains 125 ng/ μ L each of three components dissolved in methanol.

The three components are:

- Thymine (CAS# 65-71-4)
- Theophylline (CAS# 58-55-9)
- Theobromine (CAS# 83-67-0)

The checkout sample is run on the checkout column: 695975-901T (Infinity Lab Poroshell 120 HILIC, 4.6 x 100 mm, 2.7 μ m) .

The following sections list the method settings for the modules.

Set up the Checkout Method

Set up the Checkout Method

- 1 Load the default method def_LC.m.
- 2 Change the method settings for the SFC Control Module G4301A.

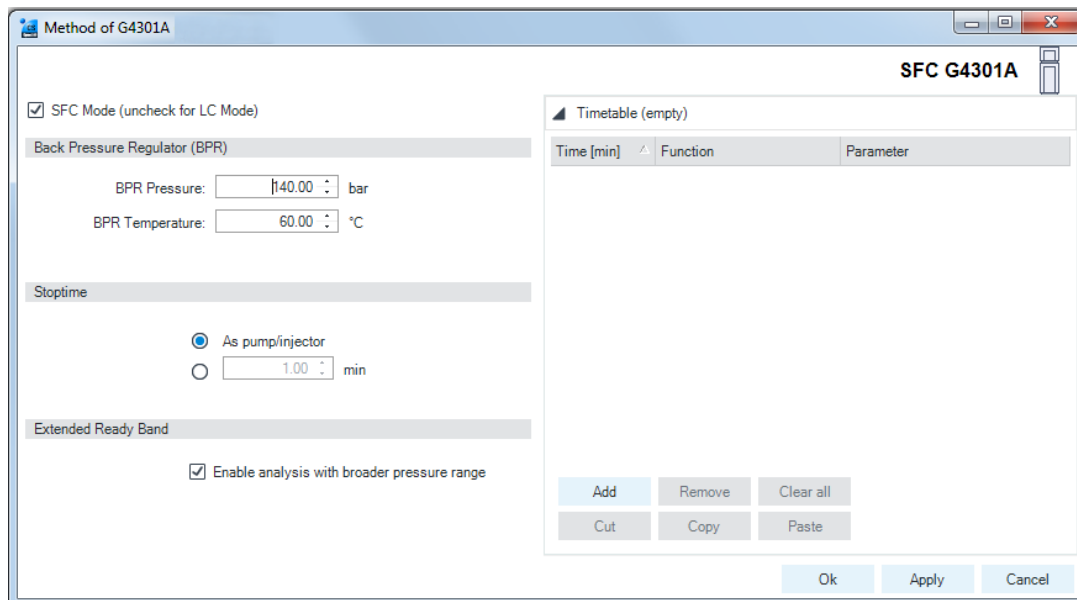


Figure 1: Method settings G4301A

Set up the Checkout Method

3 Change the method settings for the SFC Binary Pump G4782A.

Method of G4782A

Binary Pump (G4782A)

Flow: 2.500 mL/min

Solvents

A: 90.0 % CO2 extended V.01

B: 10.0 % MeOH

Pressure Limits

Min: 0.00 bar Max: 600.00 bar

Stoptime: 3.00 min As Injector/No Limit

Posttime: Off 1.00 min

Advanced

Timetable (empty)

function centric view

Time [min]	A [%]	B [%]	Flow [mL/min]	Max. Pressure Limit [bar]
0.00	90.0	10.0	2.500	600.00

Add Remove Clear All Clear Empty

Cut Copy Paste Shift Times 0.00 min

Ok Apply Cancel

Figure 2: Method settings G4782A

Set up the Checkout Method

- 4 Change the method settings for the SFC Multisampler G4767A.

Method of G4767A

Multisampler (G4767A)

Operation Mode

SFC LC

Injection

Injection volume: μL

Needle Wash

Stoptime Posttime

As Pump/No Limit Off

min min

Advanced

Sampling Speed

Draw Speed: μL/min

Eject Speed: μL/min

Wait Time After Draw: s

Feed Injection

Feed Speed: μL/min

Overfeed Volume: μL

Needle Height Position

Offset: mm

Use Vial/Well Bottom Sensing

High Throughput

Sample Flush-Out Factor:

Injection Valve to Bypass for Delay Volume Reduction

Enable Overlapped Injection

When Sample is Flushed Out

After Period of Time

minutes after injection

Injection Path Cleaning

Ok Apply Cancel

Figure 3: Method settings G4767A

Set up the Checkout Method

- 5 Change the method settings for the Multicolumn Thermostat G7116A.

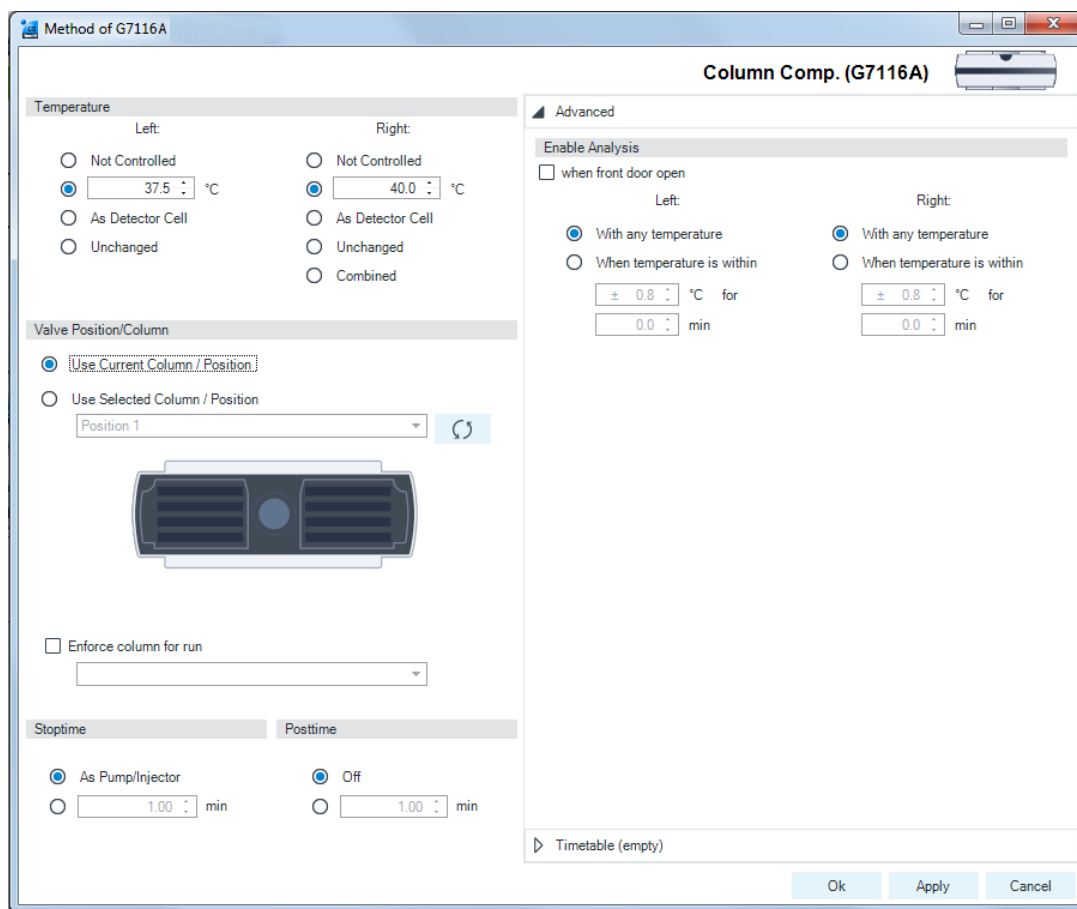


Figure 4: Method settings G7116A

Set up the Checkout Method

- Change the method settings for the Diode Array Detector G7115A.

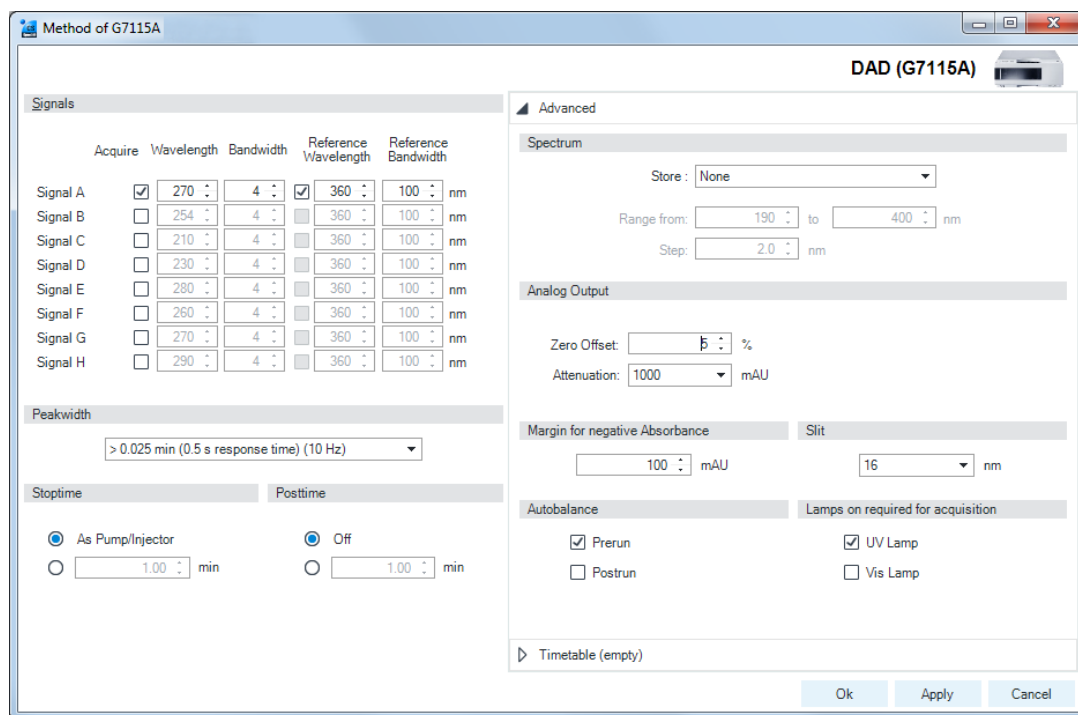
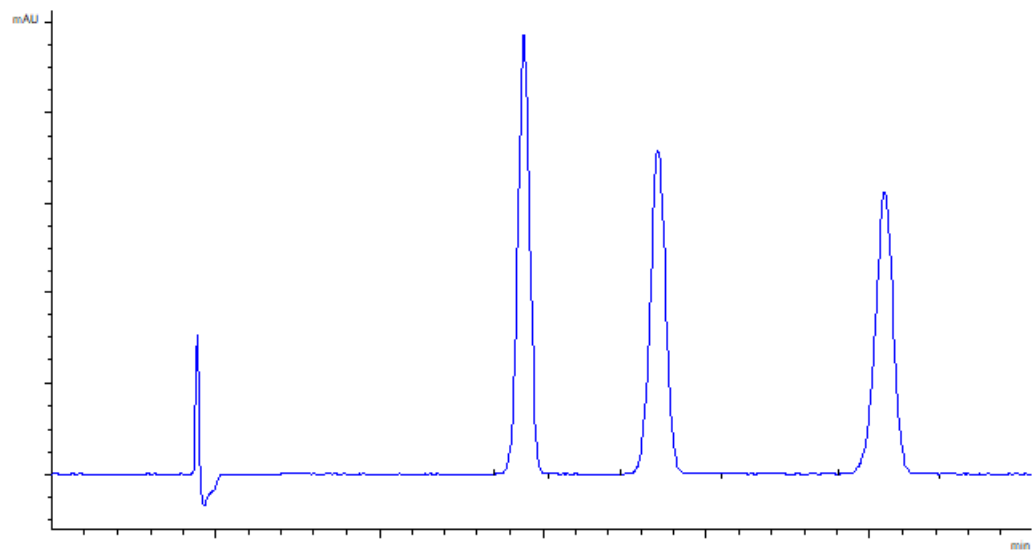


Figure 5: Method settings G7115A

- Save the method as SFC_CHECKOUT.M.
- Equilibrate the System for 10 min under checkout conditions.
- Run and evaluate the checkout method.



The information in this document also applies to Infinity II modules.

www.agilent.com

© Agilent Technologies Inc. 2020-2024
Edition: 10/2024

Document No: D0003045 Rev. C

