

Imaging Cube Selection Guide

To cover a broad range of fluorescent dyes and applications, Agilent BioTek offers more than 20 filter cubes with high-powered LEDs

LED/Filter Cube: 365 nm LED: (p/n 1225013) EX 377/50, EM 447/60: (p/n 1225100) DAPI

Dye	Peak Excitation	Peak Emission
7-Hydroxy-4-Methylcoumarine	360	449
Alexa Fluor 350	346	442
Alexa Fluor 405	402	421
DAPI	358	461
DyLight 350	353	432
DyLight 405	398	420
EBFP	380	440
Hoechst 33258	352	455
Hoechst 33342	352	455
Hoechst 34580	392	440
LysoSensor Blue	373	425
Marina Blue	363	461
Pacific Blue	404	455

LED/Filter Cube: 390 nm LED: (p/n 1225009) EX 390/18, EM 447/60: (p/n 1225115) TagBFP

Dye	Peak Excitation	Peak Emission
Pacific Blue	410	455
TagBFP	402	457

LED/Filter Cube: 465 nm LED: (p/n 1225001) EX 445/45, EM 510/42: (p/n 1225107) CFP

Dye	Peak Excitation	Peak Emission
Acridine Yellow	470	550
AmCyan1	458	489
BOBO-1	461	484
Cerulean	433	475
CFP	435	485
ECFP	434	477
LysoSensor Green (pH 5.2)	442	505
mTFP1 (Teal)	462	492
SYTOX Blue	444	480

LED/Filter Cube: 465 nm LED: (p/n 1225001) EX 469/35, EM 525/39: (p/n 1225101) GFP

Dye	Peak Excitation	Peak Emission
5-FAM (5-Carboxyfluorescein)	492	518
Alexa Fluor 488	495	519
BCECF (pH 5.5)	481	518
BODIPY FL	505	513
Calcein	494	517
Cy2	489	506
Dendra2 (Green)	491	507
DIO	475	500
DyLight 488	493	518
roGFP2 (Reduced State)	489	510
EGFP	484	507
Fluo-4	494	516
Fluorescein	494	518
LysoTracker Green	504	511
MitoTracker Green	490	516
mWasabi	493	509
Oregon Green 488	496	524
Rhodamine 110	498	521
Rhodamine Green	500	525
SYBR Green I	497	520
YO-PRO-1	491	509
YOYO-1	491	509

LED/Filter Cube: 505 nm LED: (p/n 1225004) EX 500/24, EM 542/27: (p/n 1225104) YFP

Dye	Peak Excitation	Peak Emission
6-JOE	520	548
Acridine Orange (+ DNA)	500	526
Alexa Fluor 514	518	543
Alexa Fluor 532	531	554
Calcium Green-1	502	523
Eosin	524	544
Fluo-3	506	526
LysoSensor Yellow HCK-123	488	565
mCitrine	516	529
mHoneyDew	478	562
Oregon Green 514	511	530
Rhodamine 123	511	534
Rhodamine 6G	526	551
Sodium Green	507	532
SYTOX Green	504	523
TO-PRO-1	514	533
TOTO-1	514	533
YFP	515	527
ZsYellow1	529	539

LED/Filter Cube: 523 nm LED: (p/n 1225003) EX 531/40, EM 593/40: (p/n 1225103) RFP

Dye	Peak Excitation	Peak Emission
5-TAMRA	542	568
AlamarBlue	560	590
Alexa Fluor 546	556	573
Alexa Fluor 555	555	565
AsRed2	576	592
Calcium Orange	549	576
Cy3	550	570
Cy3.5	581	596
Dil	549	565
DsRed	558	583
dTomato	554	581
DyLight 549	553	569
Ethidium Bromide	518	603
LysoTracker Red	577	592
MitoTracker Orange	551	576
mOrange	548	562
Nile Red	549	628
POPO-3	534	570
PO-PRO-3	539	567
RFP	555	584
Rhod-2	552	578
Rhodamine Phalloidin	558	575
SYTOX Orange	547	570
TRITC	557	576

LED/Filter Cube: 554 nm LED: (p/n 1225012) EX 556/20, EM 600/37: (p/n 1225125) TRITC

Dye	Peak Excitation	Peak Emission
AlamarBlue	560	590
Alexa Fluor 546	556	573
AsRed2	576	592
Cy3.5	581	596
DsRed	558	583
dTomato	554	581
LOLO-1	565	579
mApple	568	592
RFP	555	584
mRuby	558	605
mStrawberry	574	596
mTangerine	568	585
pHrodo, Succinimidyl Ester	560	587
Rhod-2	552	578
SpectrumOrange	554	587
TRITC	557	576

LED/Filter Cube: 590 nm LED: (PM 1225002) EX 586/15, EM 647/57: (p/n 1225102) Texas Red

Dye	Peak Excitation	Peak Emission
5-ROX	576	602
Alexa Fluor 568	578	603
Alexa Fluor 594	590	617
DyLight 594	593	618
mCherry	587	610
MitoTracker Red	579	599
SpectrumRed	587	615
Texas Red	596	615

LED/Filter Cube: 623 nm LED: (p/n 1225005) EX 628/40, EM 685/40: (p/n 1225105) Cy5

Dye	Peak Excitation	Peak Emission
Alexa Fluor 633	632	647
Alexa Fluor 647	650	668
Alexa Fluor 660	663	691
Allophycocyanin (APC)	650	660
Cy5	650	670
DiD (DiLC18(5))-Lipophilic Tracer	648	670
DyLight 633	638	658
DyLight 649	651	673
SpectrumFRed	650	681
TO-PRO-3	642	660
TOTO-3	642	660

LED/Filter Cube: 655 nm LED: (p/n 1225008) EX 647/57, EM 794/160: (p/n 1225114) Cy5.5

Dye	Peak Excitation	Peak Emission
Alexa Fluor 680	679	702
DyLight 680	676	705
Alexa Fluor 700	702	723
Cy5.5	675	694

LED/Filter Cube: 740 nm LED: (p/n 1225006) EX 716/40, EM 809/81: (p/n 1225106) Cy7

Dye	Peak Excitation	Peak Emission
Alexa Fluor 750	751	776
DyLight 750	751	778
DIR	750	782
Cy7	743	767

Specialty cubes

LED/Filter Cube: 405 nm LED: (p/n 1225011) EX 400/40, EM 482/25: (p/n 1225118) CFP FRET (V2)

Dye	Peak Excitation	Peak Emission
CFP YFP FRET Donor	435	485

LED/Filter Cube: 405 nm LED: (p/n 1225011) EX 400/40, EM 550/49: (p/n 1225119) CFP/YFP FRET (V2)

Dye	Peak Excitation	Peak Emission
CFP YFP FRET Acceptor Emission	N/A	527

LED/Filter Cube: 405 nm LED: (p/n 1225011) EX 400/40, EM 525/39: (p/n 1225122) Oxidized roGFP2

Dye	Peak Excitation	Peak Emission
T-Sapphire	399	511
roGFP2 (Oxidized State)	395	510

LED/Filter Cube: 465 nm LED: (p/n 1225001) EX 469/35, EM 647/57: (p/n 1225109) Acridine Orange (+RNA)

Dye	Peak Excitation	Peak Emission
Acridine Orange (+ RNA)	470	650

LED/Filter Cube: 465 nm LED: (p/n 1225001) EX 445/45, EM 685/40: (p/n 1225111) Chlorophyll A

Dye	Peak Excitation	Peak Emission
Chlorophyll	430	664
Fura Red (Ca Saturated)	435	639

LED/Filter Cube: 523 nm LED: (p/n 1225003) EX 531/40, EM 647/57: (p/n 1225112) Propidium Iodide

Dye	Peak Excitation	Peak Emission
Propidium Iodide	535	617

LED/Filter Cube: 405 nm LED: (p/n 1225011) EX 400/40, EM 647/57: (p/n 1225123)

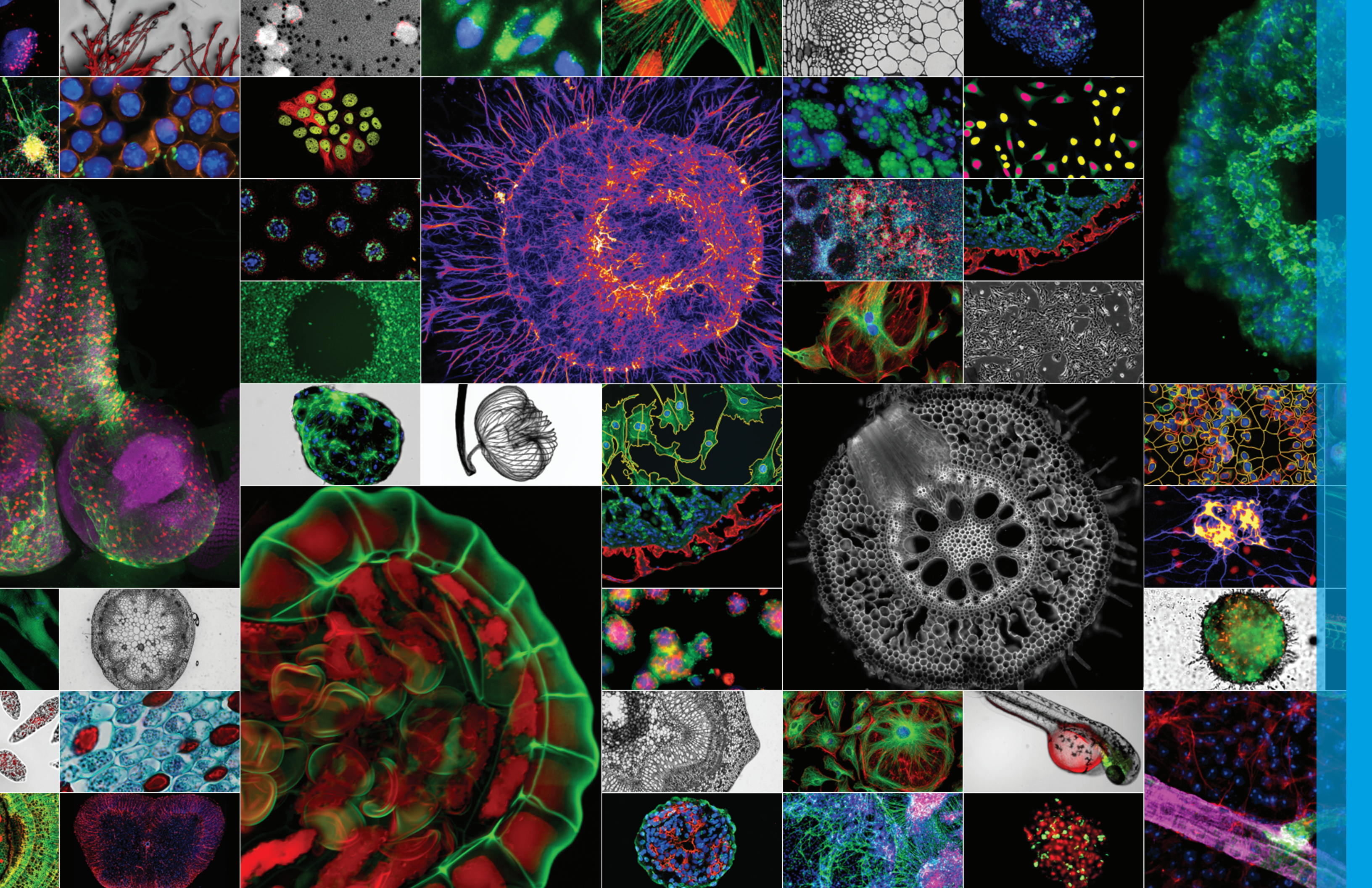
Dye	Peak Excitation	Peak Emission
Protoporphyrin IX (PPIX)	405	635
mKeima	438	622

LED/Filter Cube: 465 nm LED: (p/n 1225001) EX 469/35, EM 593/40: (p/n 1225113)

Dye	Peak Excitation	Peak Emission
Phycoerythrin	545	575

Confocal Cubes

Confocal Cube	EX Filter	EM Filter
DAPI Confocal Imaging Cube (p/n 1945103)	390/40	442/42
CFP Confocal Imaging Cube (p/n 1945101)	445/45	510/42
GFP Confocal Imaging Cube (p/n 1945104)	495/25	520/35
RFP Confocal Imaging Cube (p/n 1945105)	520/35	585/40
TRITC Confocal Imaging Cube (p/n 1945106)	556/20	600/37
CY5 Confocal Imaging Cube (p/n 1945102)	635/18	685/40



Learn more:
www.agilent.com/lifesciences/cellanalysis
 Buy online:
www.agilent.com/lifesciences/store
 Find local Sales and Support in your country:
www.agilent.com/lifesciences/contactus
 USA and Canada:
 1-800-227-9770
agilentinquiries@agilent.com
 Europe
info_agilent@agilent.com
 Asia Pacific
inquiry_lsca@agilent.com

Filter Cubes for Agilent BioTek Imaging and Microscopy Instruments



BioSpa 8 automated incubator

BioSpa 8 automated incubator optimizes liquid handling, plate reading, and imaging workflows for multiple plates.



Lionheart FX automated microscope

Automate image capture and analysis with power and ease.



Lionheart LX automated microscope

Designed for affordability and simplicity. Fully automate image capture, processing, and analysis.



Cytation 5 cell imaging multimode reader

Combines automated digital microscopy and conventional multimode microplate detection in a configurable, upgradable platform.



Cytation 7 cell imaging multimode reader

Combines automated digital upright and inverted widefield microscopy with monochromator-based multimode microplate reading.



Cytation C10 confocal imaging reader

Small and powerful, the Cytation C10 delivers crisp, high-resolution images, and the ability to image and analyze 3D samples.

DE-003116

This information is subject to change without notice.

© Agilent Technologies, Inc. 2021, 2023, 2024
 Published in the USA, December 2, 2024
 5994-3139EN
 PN 1321041 Rev. E

