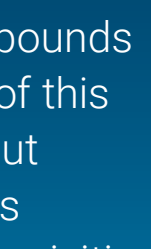
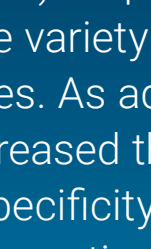
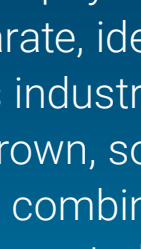
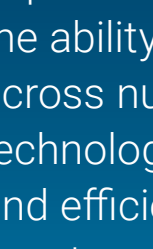
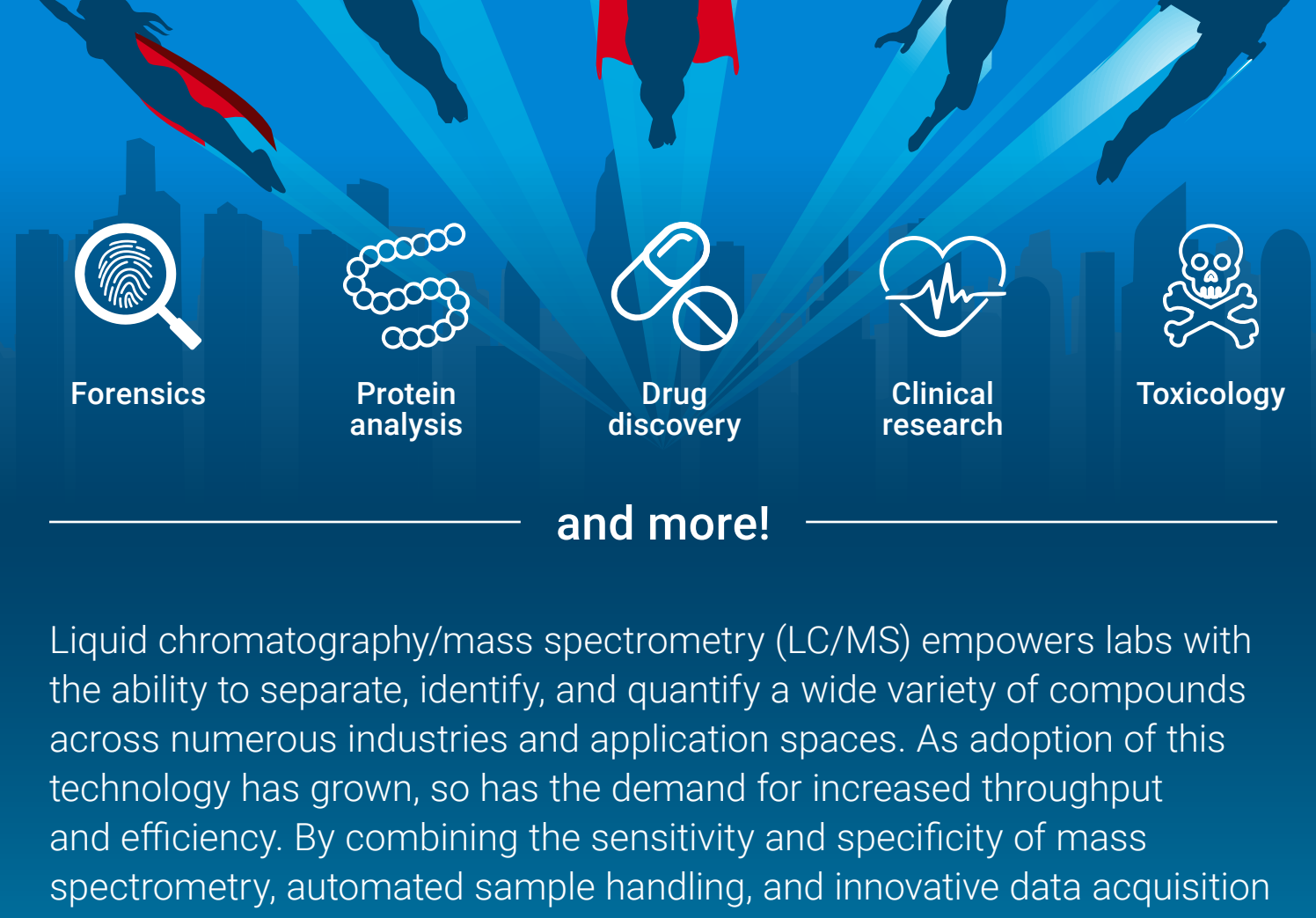


SUPERCHARGE Your Mass Spectrometry Workflow



and more!

Liquid chromatography/mass spectrometry (LC/MS) empowers labs with the ability to separate, identify, and quantify a wide variety of compounds across numerous industries and application spaces. As adoption of this technology has grown, so has the demand for increased throughput and efficiency. By combining the sensitivity and specificity of mass spectrometry, automated sample handling, and innovative data acquisition techniques, high-throughput mass spectrometry (HTMS) overcomes common analytical bottlenecks. This infographic explores HTMS solutions that can allow you to unlock the potential of your lab.

Common analytical bottlenecks



Achieve more with HTMS

HTMS enables labs to reduce data acquisition time to as little as seconds per sample. Agilent RapidFire and StreamSelect can accommodate unattended evening and weekend runs, stretching productivity further. These tools have become invaluable for labs requiring quick turnaround times and cost efficiency.



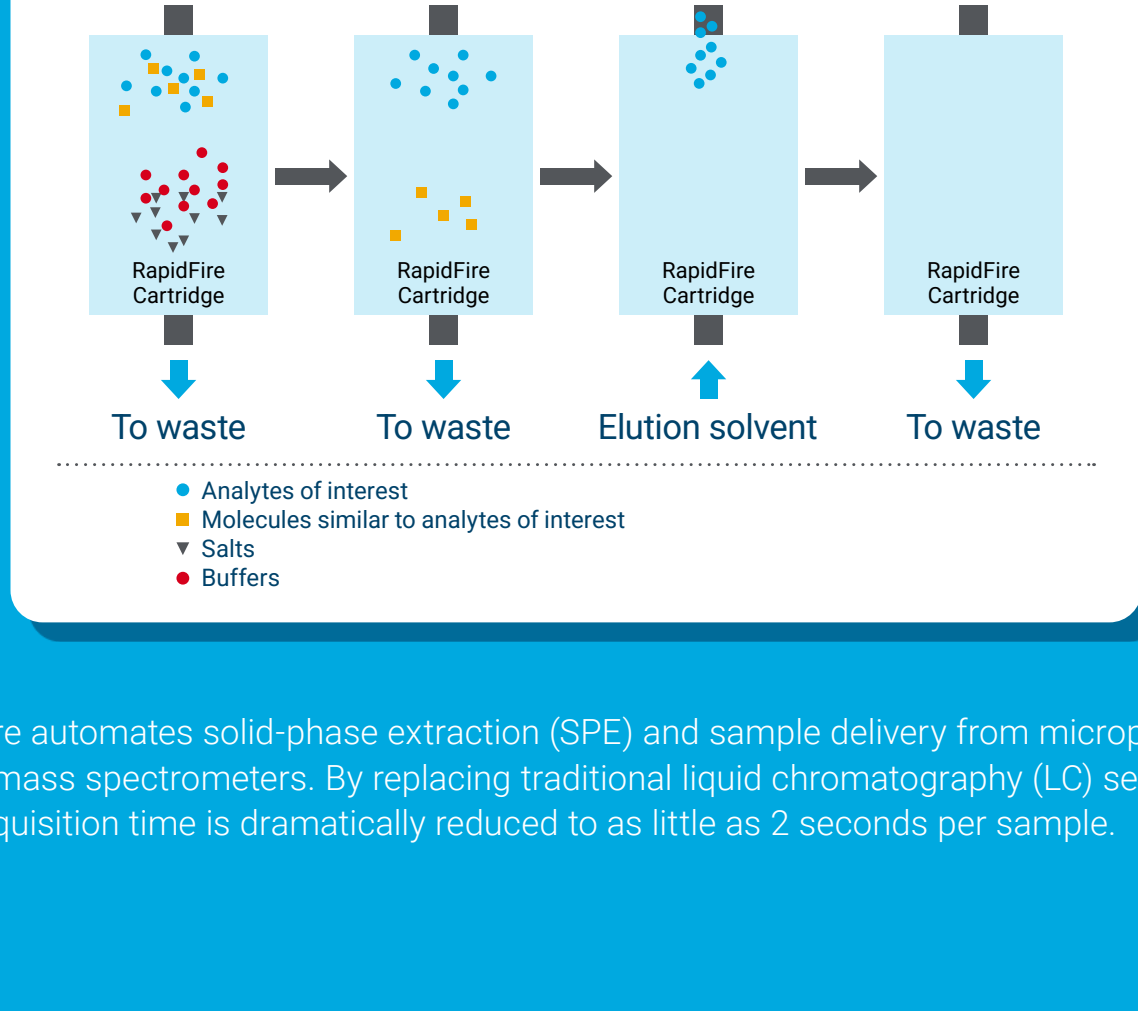
Proven technology

RapidFire 400



- On-board plate storage
- Barcode reader
- Integrated microplate-handling robotics
- Temperature-controlled sample storage
- Supports TQ, TOF, and QTOF
- Automated cartridge exchanger

How RapidFire works



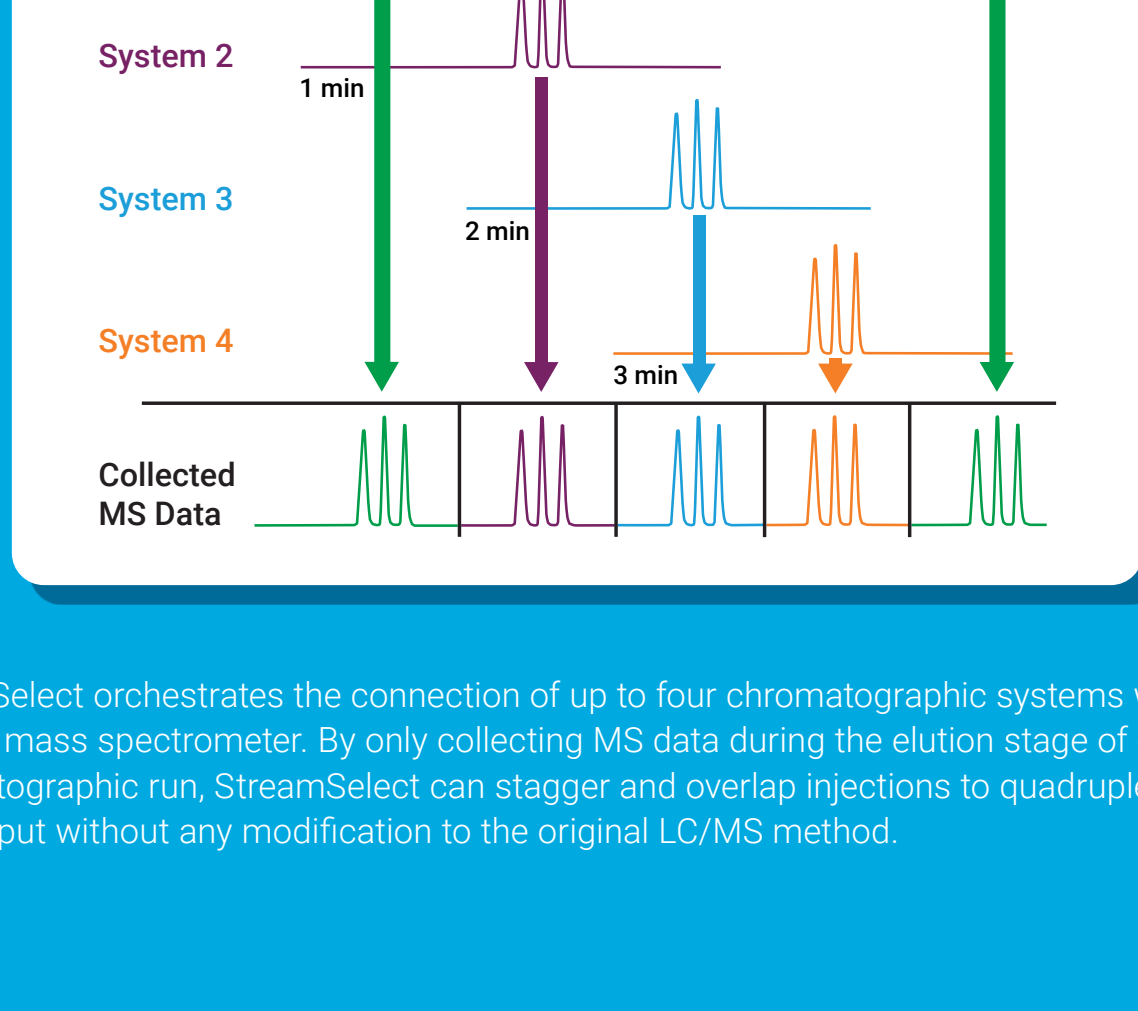
RapidFire automates solid-phase extraction (SPE) and sample delivery from microplates to liquid mass spectrometers. By replacing traditional liquid chromatography (LC) separation, data acquisition time is dramatically reduced to as little as 2 seconds per sample.

StreamSelect



- Data quality without compromise
- Multi-column thermostat
- Temperature-controlled sample storage
- Fully integrated software and hardware
- Optimal online sample cleanup

How StreamSelect Works



StreamSelect orchestrates the connection of up to four chromatographic systems with a single mass spectrometer. By only collecting MS data during the elution stage of each chromatographic run, StreamSelect can stagger and overlap injections to quadruple throughput without any modification to the original LC/MS method.

The right solution

Agilent offers HTMS solutions with a variety of throughput and automation capabilities to suit your workflow needs.

"I need to run **thousands** of samples per day"

Choose RapidFire 400 for the highest throughput capability

- Integrated sample handling robotics
- Support for 96-, 384-, and 1536-well plates; up to 138,240 samples
- Ultrafast sample cleanup
- Automated evening and weekend operation
- Data acquisition time as short as 2 seconds
- Hundreds of [applications](#) and [publications](#) of proven success

"I want to run **hundreds** of samples per day and differentiate isobaric compounds"

Choose the StreamSelect LC/MS system for an optimized, integrated solution

- Produce results up to four times faster
- Maintain full chromatographic separation of samples
- Easy-to-use
- Fully integrated software
- Online sample cleanup

Learn more about [High-Throughput MS Systems](#), [talk to an expert](#), or explore our [Frequently Asked Questions](#)