

How to backup and restore data for 2019 SQL Server (For Aria Electronic Tracking Users)

This document provides a step-by-step guide for customers to backup and restore their SQL database using SQL Server Management Studio (SSMS). The guidelines below also apply to users who want to migrate from the old 2012 SQL server to the currently supported 2019 SQL server.

Contents

Steps – Prerequisites.....	2
Steps – Backing Up Data	2
Steps – Restoring the Backup	5
Verification.....	9

Steps – Prerequisites

1. If not already installed, download and install [SQL Server Management Studio \(SSMS\)](#).

Download SSMS

To download SSMS 19 Preview 3, visit [Download SSMS 19](#).

[Free Download for SQL Server Management Studio \(SSMS\) 18.12.1](#)

SSMS 18.12.1 is the latest general availability (GA) version. If you have a previous GA version of SSMS 18 installed, installing SSMS 18.12.1 upgrades it to 18.12.1.

- Release number: 18.12.1
- Build number: 15.0.18424.0
- Release date: June 21, 2022

About SQL Server Management Studio ✕

SQL Server Management Studio

v18.12.1

Component Name	Versions
SQL Server Management Studio	15.0.18424.0
SQL Server Management Objects (SMO)	16.100.47021.0+7...
Microsoft Analysis Services Client Tools	15.0.19750.0
Microsoft Data Access Components (MDAC)	10.0.19041.1
Microsoft MSXML	3.0 5.0 6.0
Microsoft .NET Framework	4.0.30319.42000
Operating System	10.0.19042

To copy component name and version information, click Copy Info. Copy Info

Warning: This computer program is protected by copyright law and international treaties. Unauthorized reproduction or distribution of this program, or any portion of it, may result in severe civil and criminal penalties, and will be prosecuted to the maximum extent possible under the law.

© 2022 Microsoft. All rights reserved.

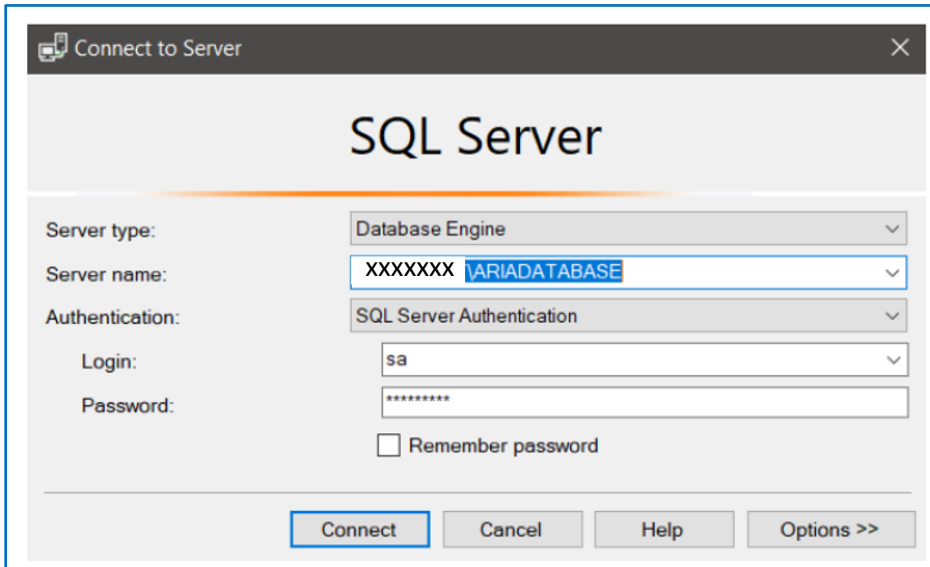
OK

**SSMS v18.12.1 was used to verify these procedures.*

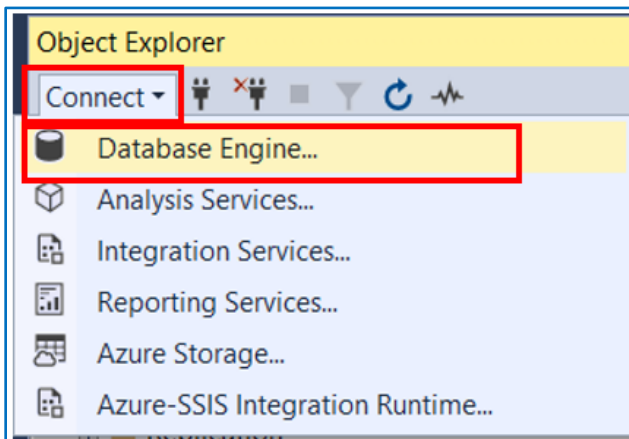
Steps – Backing Up Data

2. Connect to the SQL Server Instance to be migrated.

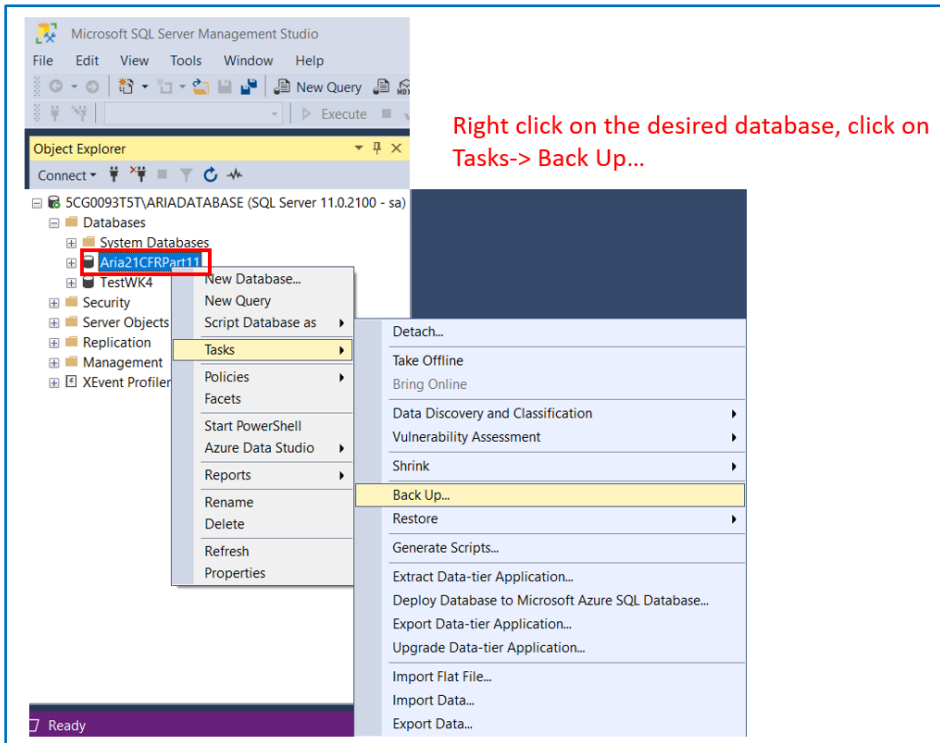
3. Open SQL Server Management Studio. You will be prompted to login after the application startup. In the case that the “Login” and “Password” fields are auto populated, you only have to select the server name and click “Connect.”



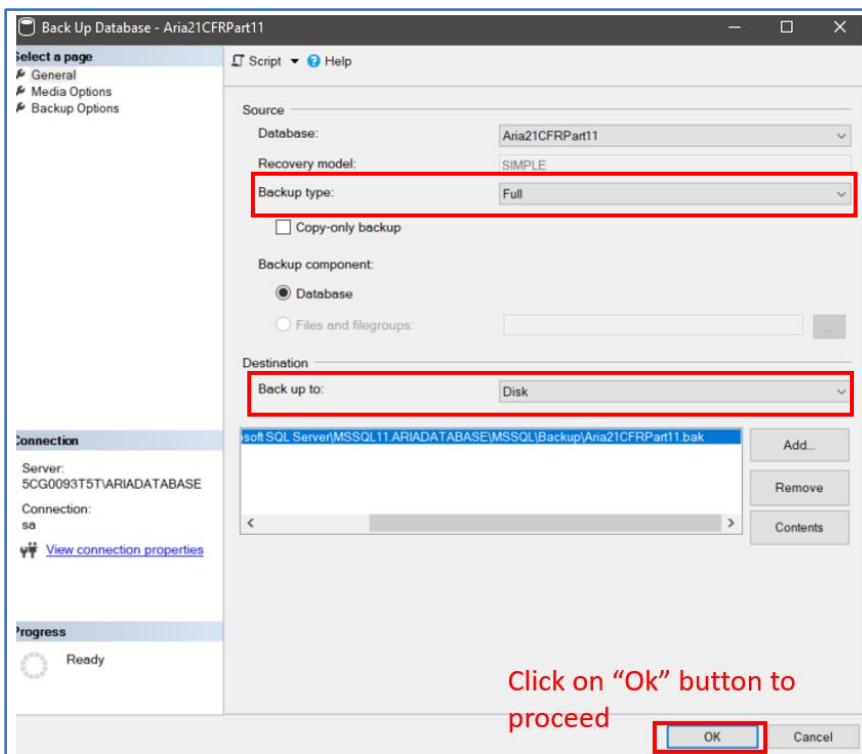
Alternatively, you may cancel out of the initial SSMS window and connect to the server using the outlined button below.



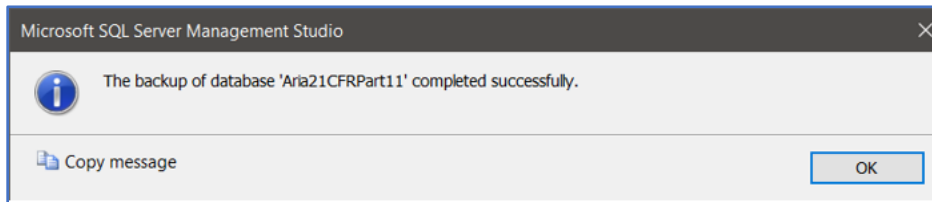
- Using the *Object Explorer*, navigate to the desired database, right-click, and go to **Tasks > Back Up**.



- Make sure the backup type is **“Full”** and is backed up to **Disk**. Start the backup process by clicking **OK** on the back-up main window.



6. Click *Ok* to complete the process. You should see the following message.



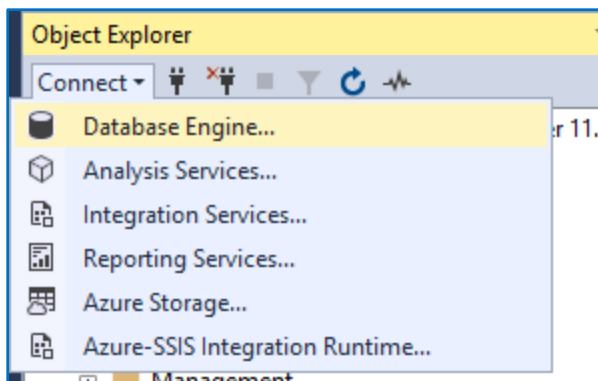
Steps – Restoring the Backup

7. Create a new SQL Server 2019 instance using the SQL Install wrapper application.

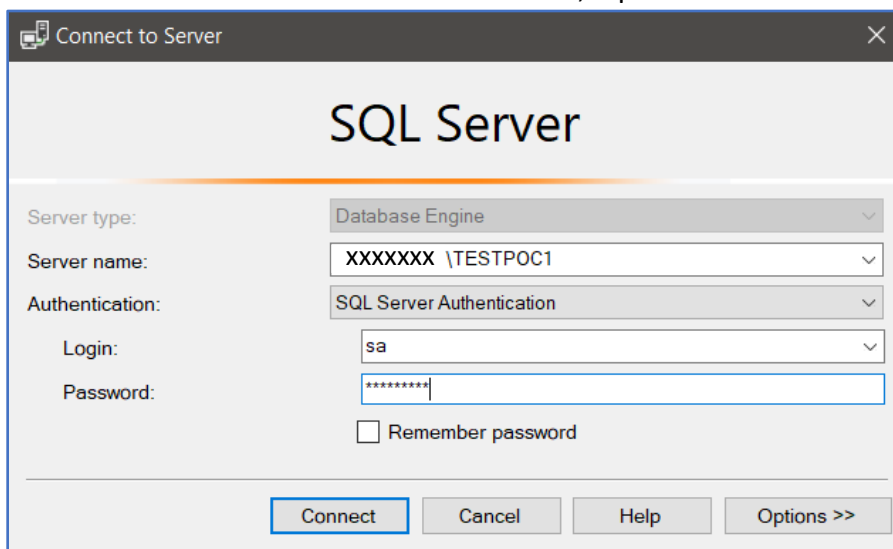
***** Please make sure that no database of the same name is present in the new SQL Server instance. The SQL installer will not allow a user to create a new database instance with a name that has already been used.**

For example, If the source database used for backup is "AriaDatabase", please ensure that "AriaDatabase" does not already exist in the destination SQL Server instance.

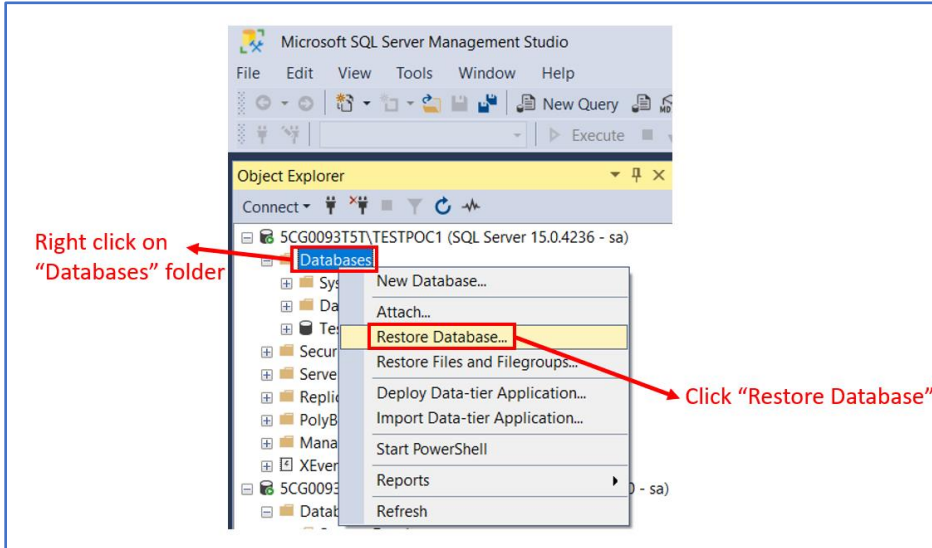
8. Using the Object Explorer select **Connect > Database Engine...**



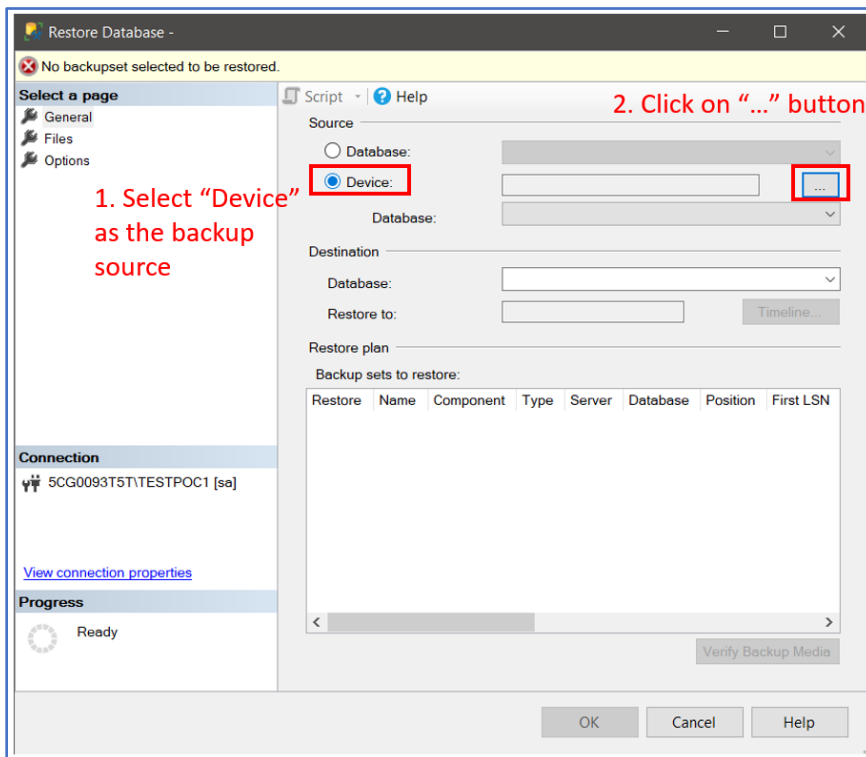
9. Select the SQL Server instance to connect to, input the credentials and click **Connect**.

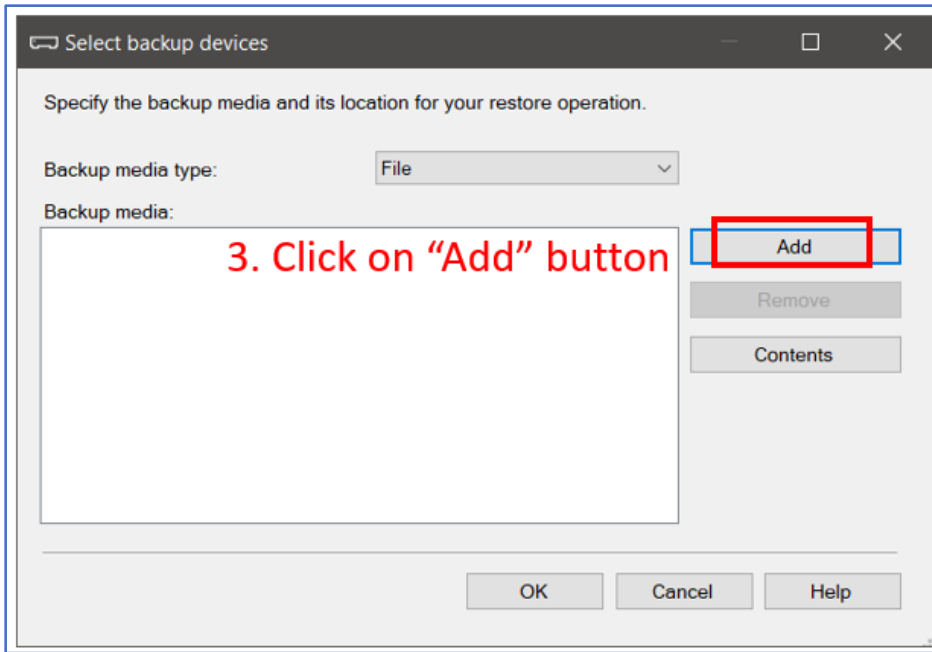


10. On the *Object Explorer*, right click **Databases** and select **Restore Database...**

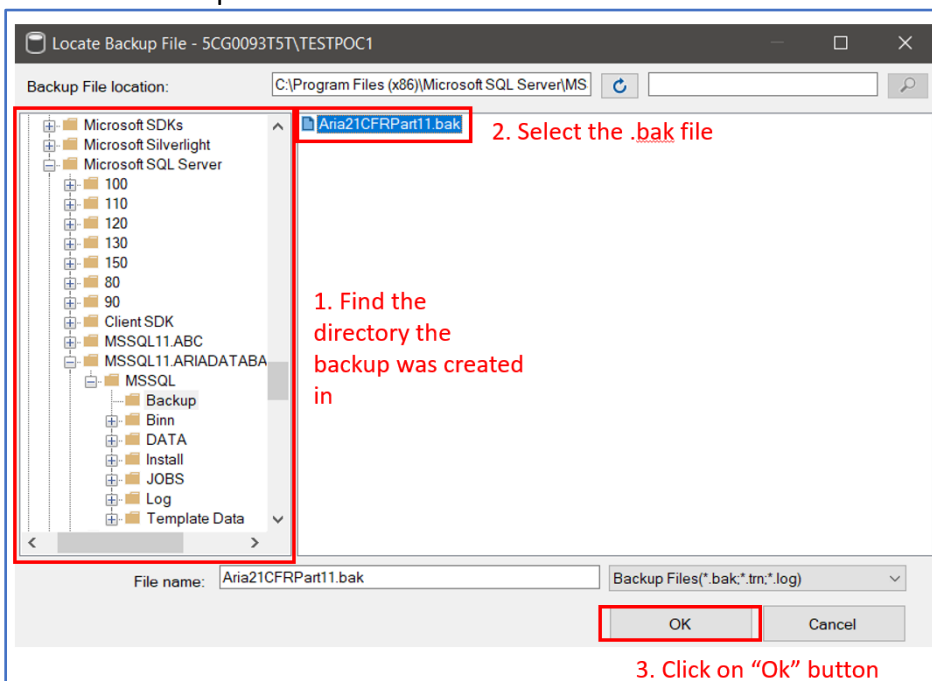


11. Select **Source: Device** and click the “...” button and then click **“Add.”**

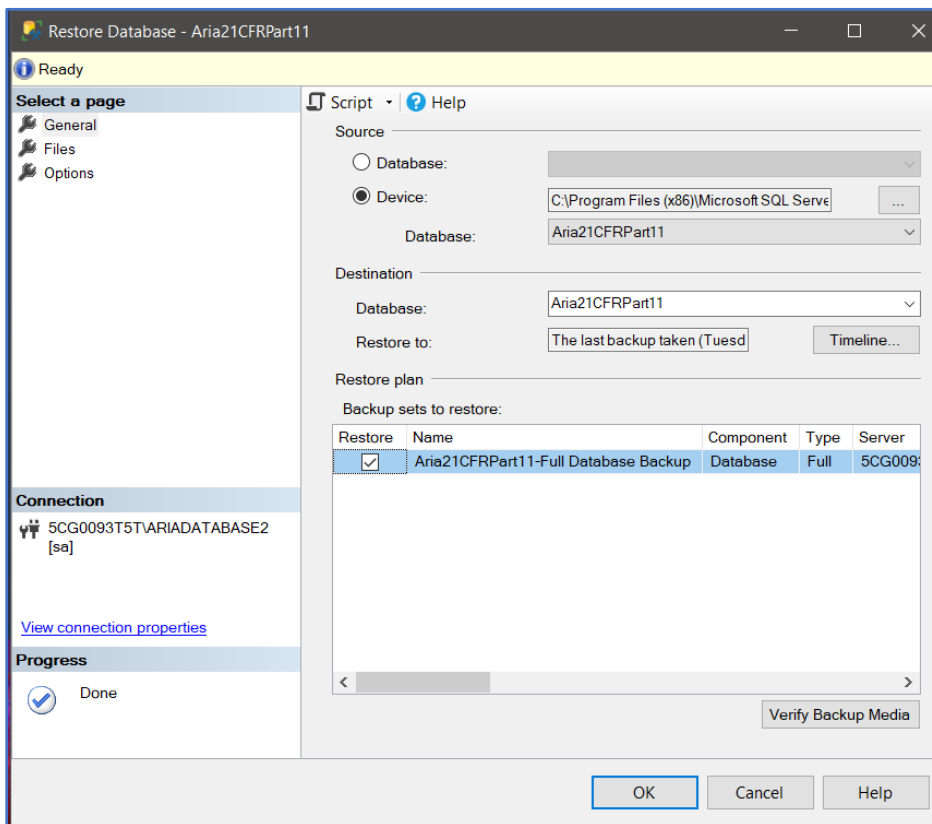
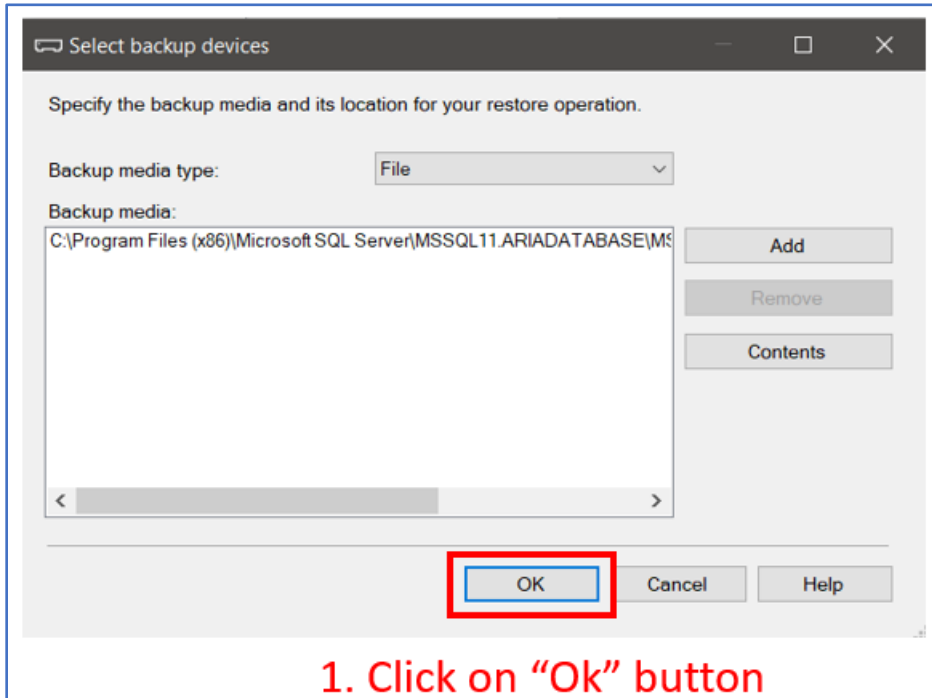




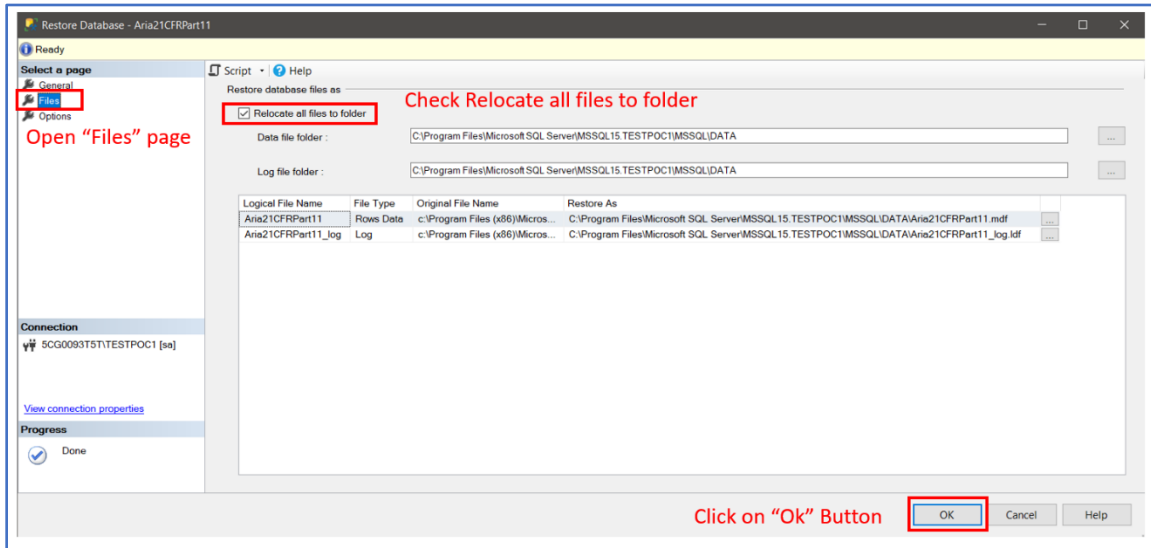
12. Select the backup file and click **OK**.



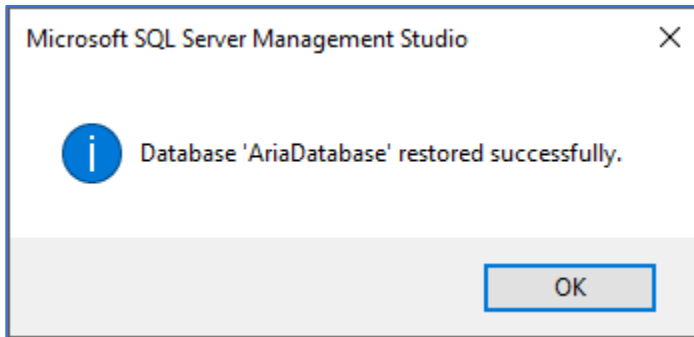
13. Click **OK** on the **Select backup devices** window.



- Go to the **Files** tab on the **Restore Database** window, tick the **Relocate all files to folder** checkbox and click **OK**. No action required on the “Options” page.



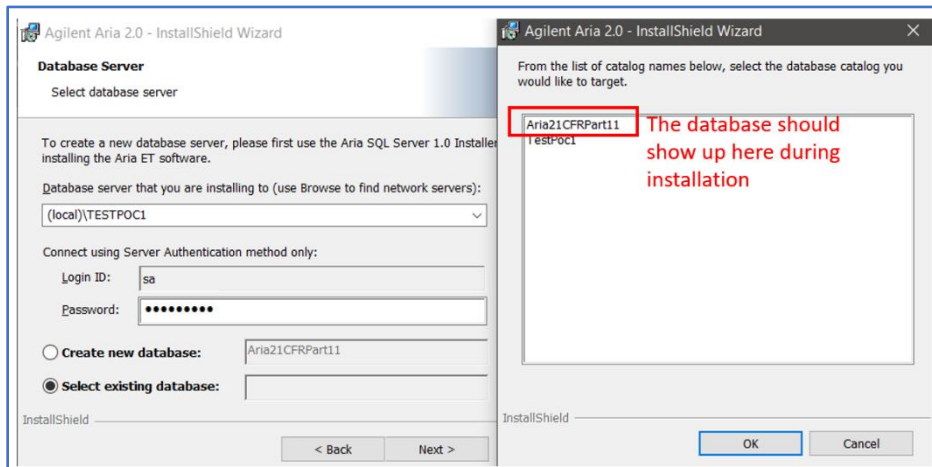
- The database has now been migrated to the instance. It can be used by re-installing the software and selecting the new database as the default database.



Verification

To verify if the restoration was successful:

- The database should show up during Aria Software installation.



- The Aria software will connect to the database using the same credentials (same username and password) as the old database.
- Log Entries have successfully migrated. Experiment files are also migrated and can be opened.

