

Agilent Seahorse XF Pro Controller ReadMe Installation Guide

Introduction

Use this document to update Agilent Seahorse XF Pro Controller software for your Agilent Seahorse XF Pro Analyzer Controller (computer). This software update takes less than 10 minutes. It is highly recommended to perform the software update at least 1 day in advance of your next planned Seahorse XF assay.

Agilent Seahorse XF Pro Controller software is the instrument control and data acquisition software for Agilent Seahorse XF Pro Analyzers. For comprehensive documentation of features and how to use XF Pro Controller software, please refer to the [Agilent Seahorse Wave Pro](#) and [XF Pro User Guide](#).

Important information

- XF Pro Controller software is intended for installation on Seahorse XF Pro Controllers only. Do not attempt installation on any other Agilent Seahorse Analyzers, or your personal computer.
- The XF Pro Analyzer must be powered ON and connected to the XF Pro Controller (computer) during the update. After the update is complete, the XF Pro Controller must be restarted before performing an assay.
- If you are upgrading your version of XF Pro Controller software, do not uninstall the previous version of XF Pro Controller software before upgrading.
- Log-in credentials may be required after completing the update. If the credentials have not been modified from the default values, they may be required after restarting the XF Pro Controller. The default credentials are:
 - **Username:** seahorse
 - **Password:** seahorse
- Reboot the XF Pro Controller once per week. You may notice at times the Windows OS or XF Pro Controller software responding slowly. This can be due to an application over-using the computer's resources (CPU, physical memory), memory leaks, or other low-level errors that have accumulated over time. Rebooting the XF Pro Controller resets the current state of Windows and software applications that may be causing any of the issues mentioned above.
- The Windows Operating System language is set to English and cannot be modified. Changing this setting will significantly impact software functionality.

Verify administrator privileges

If the Windows User Account has been modified from the default Agilent Seahorse user account, verify the user account has Administrator privileges prior to software installation or update. Administrator privileges are required to update XF Pro Controller software. If the user account does not have administrator privileges, contact your local IT administrator.

1. Log in to the PC.
2. Click the **Windows Start button > Control Panel > User Accounts > Manage User Accounts**.

Download XF Pro Controller software

1. On your personal computer, open an internet browser and visit the link: <https://www.agilent.com/en/product/cell-analysis/real-time-cell-metabolic-analysis/xf-software/seahorse-xf-pro-controller-software-2007524>.
2. Complete the required fields on the registration form, then click **Submit**. After clicking **Submit**, the software download will begin automatically.
3. Once the download is complete, right-click on the compressed folder and click **Extract All...** to unzip the folder (Figure 1).

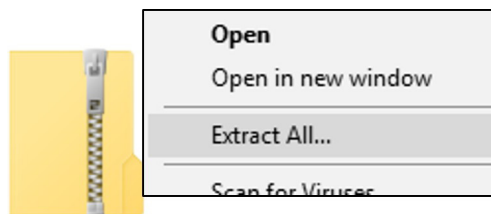


Figure 1. Compressed folder.

4. The unzipped folder contains the executable file. Copy/paste the executable file to a USB flash drive.

Installation

1. Close XF Pro Controller software (if open).
2. Plug the USB Flash Drive into the XF Pro Controller.
3. Double-click the executable file to begin installation.
4. Click **Next** on the Welcome window (Figure 2).



Figure 2. Welcome window.

5. Review the License Agreement and accept the terms. Click **Next** (Figure 3).

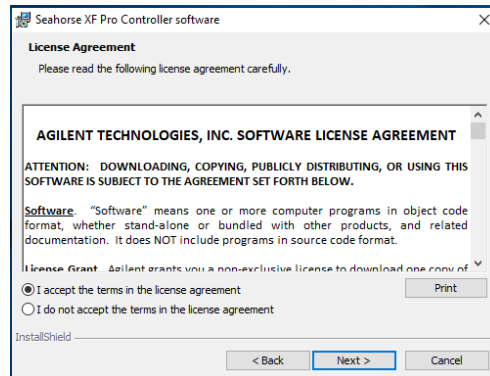


Figure 3. License Agreement.

6. Click **Install** on the Ready to Install window (Figure 4).

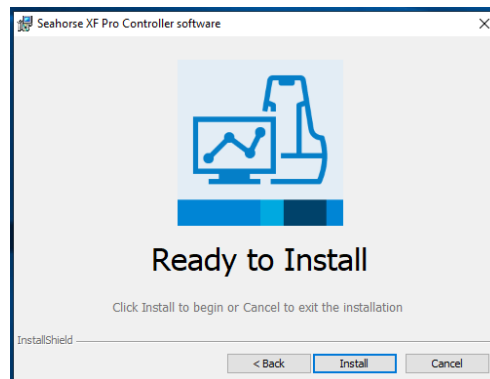


Figure 4. Ready to Install window.

7. After completing installation, the installer will display the Installation Complete window. Click **Finish** to complete installation (Figure 5).

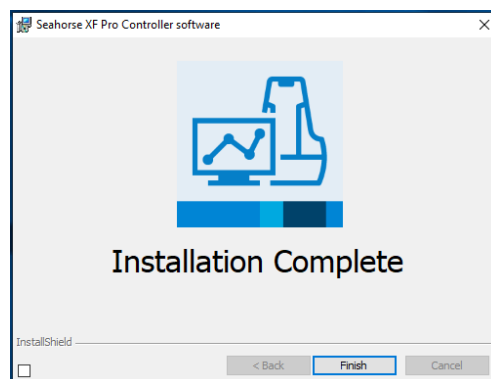


Figure 5. Installation Complete window.

8. After completing the XF Pro Controller software update, the XF Pro Controller must be restarted. A message prompt requesting the restart is displayed following the software update (Figure 6). Click **Yes** to automatically restart your XF Pro Controller.

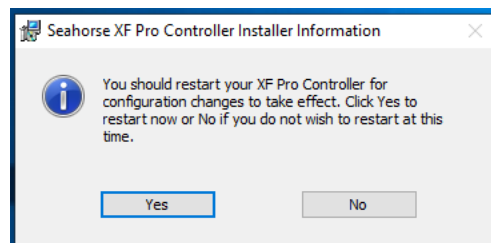


Figure 6. XF Pro Controller reboot prompt.

Warranty

The material contained in this document is provided “as is,” and is subject to being changed, without notice, in future editions. Further, to the maximum extent permitted by applicable law, Agilent disclaims all warranties, either express or implied, with regard to this manual and any information contained herein, including but not limited to the implied warranties of merchantability and fitness for a particular purpose. Agilent shall not be liable for errors or for incidental or consequential damages in connection with the furnishing, use, or performance of this document or of any information contained herein. Should Agilent and the user have a separate written agreement with warranty terms covering the material in this document that conflict with these terms, the warranty terms in the separate agreement shall control.

www.agilent.com/chem/discoverxf

For Research Use Only. Not for use in diagnostic procedures.

This information is subject to change without notice.

© Agilent Technologies, Inc. 2021, 2022
Printed in the USA, February 8, 2022
5994-4572EN