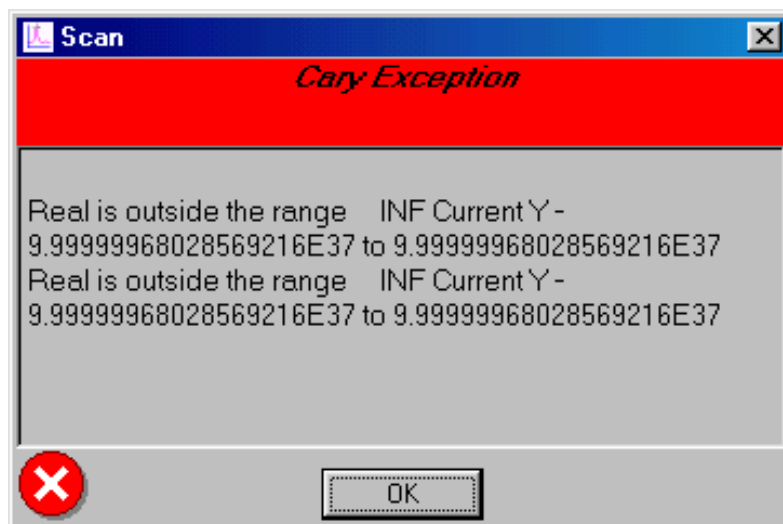


External DRA 1800 ADL Instructions

Introduction

The External DRA 1800 may produce an error when the sample port or reference port is exposed to room light depending on the intensity of the light in the room. The following error is displayed:



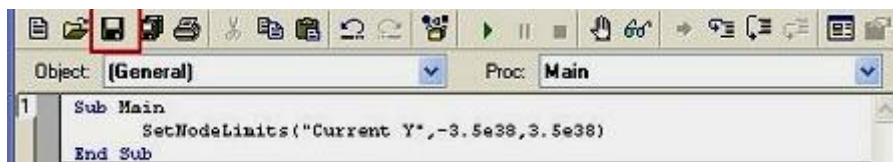
The error occurs only when the instrument is idling in the near infrared region and when the Y mode is in %T or %R. This problem is cosmetic and does not affect the performance of the instrument. The problem can be resolved by creating the following ADL. This ADL need only be created once.



Procedure

To create the ADL:

- 1 Open the 'ADL Shell' application in the Cary WinUV package.
- 2 If the ADL Editor is not visible, from the **View** menu, choose **ADL** and then **ADL Editor**.
- 3 Type this code:
SetNodeLimits("Current Y",-3.5e38,3.5e38)
in between 'Sub Main' and 'End Sub' as shown below:



- 4 Save the ADL by clicking the **Save** icon (shown with a square around it in the above figure) and use the file name 'SYSMODELCHANGE.ADL'. The ADL must be saved in the 'Adl' subdirectory of the 'Cary WinUV' folder.

When an application is re-opened, the changes incurred by the ADL will come into effect. Instead of the error message, the letters 'INF' will appear in the Y mode status area in the top left corner of the screen.

This information is subject to change without notice.



8510208200

Part Number: 8510208200

Edition 01/11

Issue 2

Printed in Australia

© Agilent Technologies, Inc. 2003, 2011

Agilent Technologies

679 Springvale Road

Mulgrave, VIC 3170