



# Wave Desktop 2.4 ReadMe

## Introduction

Use this document to install or update Agilent Seahorse Wave Desktop software on your personal computer. The procedure for upgrading an existing version of Wave Desktop software is the same as the initial install. For comprehensive documentation of features and how to use Wave Desktop, refer to the Agilent Seahorse Wave User Guide.

The primary functions of Wave Desktop software include:

- **Data Analysis** - Import and analyze assay result files (\*.asyr) generated by Agilent Seahorse XFe24, Agilent Seahorse XFe96, Agilent Seahorse XFp Analyzers, and XFd (\*.xfd) files generated by Agilent Seahorse XF24 and Agilent Seahorse XF96 Analyzers.
- **Experiment Design** - Create custom assay templates for Agilent Seahorse XFe and XFp Analyzers only, assay templates generated by Wave Desktop are not supported on Agilent Seahorse XF24 and XF96 Analyzers. Wave Desktop cannot be installed on Agilent Seahorse XF, XFe and XFp Analyzer Controllers.

**Table 1** PC Requirements

Computer	Specifications
Windows PC	Operating System: Windows 7, 8.1, and 10 Processor: Intel Core i3 (or better) Hard Disk Space: 1 GB minimum System Memory (RAM): 2 GB minimum Screen Resolution: 1280 x 800 minimum Supported Excel Versions: 2010, 2013 and 2016
Macintosh PC	Operating System: Mac OS w. Parallels 9 (or higher) and Windows 7, 10 Processor: Intel Core i3 (or better) Hard Disk Space: 1 GB minimum System Memory (RAM): 2 GB minimum Screen Resolution: 1280 x 800 minimum Supported Excel Versions: 2011 and 2016



- **Microsoft .NET Framework 4.6.1:** If Microsoft .NET 4.6.1 is not detected during install/update, Wave will automatically install it\*. If the Microsoft .NET update fails, manually download and install version 4.6.1 by visiting the Microsoft webpage:  
<https://www.microsoft.com/en-us/download/details.aspx?id=49982>
- **Administrator Privileges:** To check your Windows User Account permissions, click the **Windows Start button > Control Panel > User Accounts > Manage User Accounts**. You may be prompted to provide the administrator password. If the "Group" does not equal Administrator, then your account does not have administrator privileges. Contact your local IT administrator for further assistance.
- **PDF Reader (Adobe Reader XI):** If a PDF reader is not detected during install/update, Wave will offer to install Adobe Reader XI. If you prefer an alternate PDF reader program, decline the Adobe Reader XI install prompt.

## Other Important Information

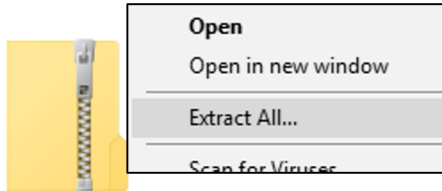
- 1 Do not uninstall the previous version of Wave Desktop before upgrading to version 2.4.
- 2 After completing the install/update, restart your PC.
- 3 If you have a Wave Desktop version earlier than 2.0, please contact Agilent Seahorse Technical Support for assistance. Do not attempt to update to version 2.4.
- 4 Any Seahorse files with the file extension \*.asy must be converted to the appropriate file format before they can be opened and viewed in Wave Desktop 2.4. Contact Agilent Seahorse Technical Support before upgrading to Wave Desktop 2.4.

## Download Wave Desktop 2.4

- 1 Open an internet browser and navigate to:  
[www.agilent.com/en-us/products/cell-analysis-\(seahorse\)/software-download-for-wave-desktop](http://www.agilent.com/en-us/products/cell-analysis-(seahorse)/software-download-for-wave-desktop)
- 2 Complete the required fields on the registration form, then click **Submit**.
- 3 On the next webpage, click the orange **Download** button to download a compressed folder containing the Wave Desktop 2.4 installer file (Setup.exe).

## Installation

- 1 Right-click on the compressed folder and click **Extract All** to unzip the folder, then double-click the **Setup.exe** file to begin installation (Figure 1).



**Figure 1** Compressed folder

- 2 If you are installing Wave Desktop software for the first time, click **Next** on the Welcome to Wave window (Figure 2A). If you are updating your Wave Desktop software, click **Next** on the Ready to Update window (Figure 2B on page 4).

A)



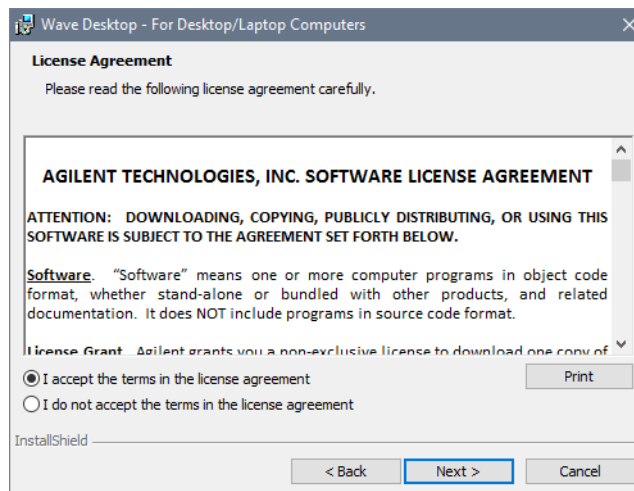
**Figure 2** Welcome window

B)



**Figure 2** Ready to Update window

**3** Review the License Agreement, and accept the terms. Click **Next** to continue (Figure 3).



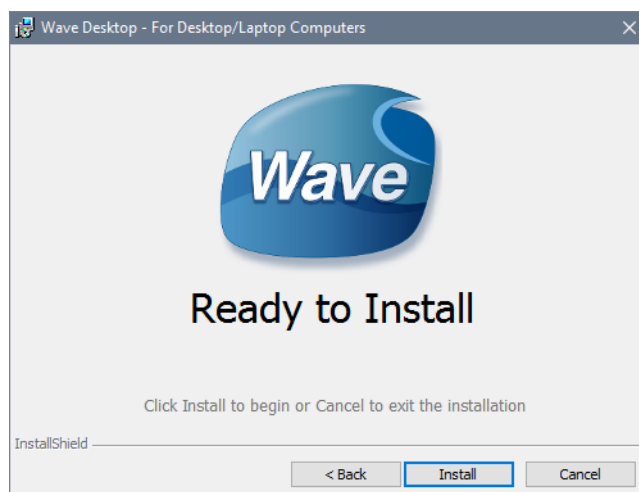
**Figure 3** License Agreement

- 4 Select the Agilent Seahorse Analyzer(s) that will be used with Wave Desktop on the Choose Instruments window. At least one analyzer must be selected to proceed, then click **Next** (Figure 4).



**Figure 4** Choose Instruments window

- 5 Click **Install** on the Ready to Install window (Figure 5).



**Figure 5** Ready to install window

- 6 After completing installation, the installer displays the Installation Complete window. Click **Finish** to complete installation (Figure 6).

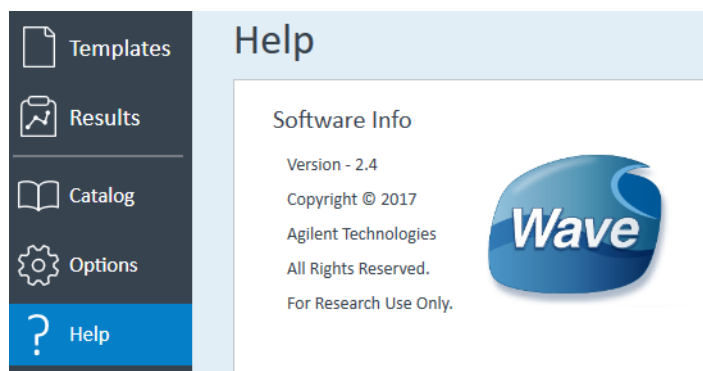


**Figure 6** Installation Complete window

## Verify Successful Install and Update

Confirm the software update to Wave Desktop 2.4 was successful:

- 1 Open Wave Desktop 2.4 by double-clicking the **Wave** icon on the Desktop.
- 2 When Wave Home appears, click the **Help** button on the left-side navigation.
- 3 Confirm the software version is 2.4 (Figure 7).

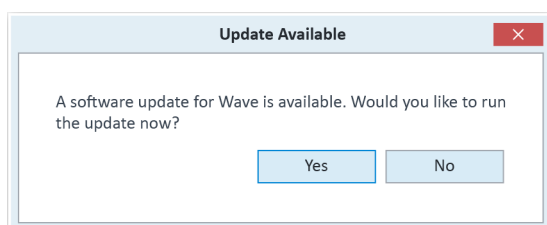


**Figure 7** Verify Successful Update

## Automatic Wave Software Updates

Wave Desktop detects and downloads Wave updates automatically. After a releasing a Wave Desktop update, the next time you open Wave Desktop, an Update Available prompt will appear (Figure 8).

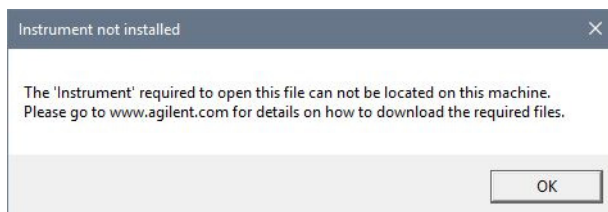
- New updates are not automatically installed.
- The PC must have an active internet connection to download Wave updates.



**Figure 8** Update Available window

## Add/Remove Instrument License Files

Based on the instrument selection during installation/update (Figure 4), Wave Desktop will only open assay result and assay template files for those selected instruments. If you try to open an Agilent Seahorse file but encounter the "Instrument not installed" error message (Figure 9), you can add the instrument license by completing the following steps:



**Figure 9** Instrument not installed window

To change the instruments configured for use with Wave Desktop:

- 1 Close **Wave Desktop**.
- 2 Click the **Windows Start button**, then **Control Panel > Programs and features**.
- 3 Right-click on **Wave Desktop**, then click **Change**.
- 4 Click **Next** on the **Seahorse Wave Maintenance** window.
- 5 Ensure the **Modify** option is selected, and click **Next**. This wizard allows you to modify the Agilent Seahorse XFe and XFp Analyzers that can be used with Wave Desktop as well as reconfiguring the Automatic Updates option.



### **Warranty**

**The material contained in this document is provided "as is," and is subject to being changed, without notice, in future editions. Further, to the maximum extent permitted by applicable law, Agilent disclaims all warranties, either express or implied, with regard to this manual and any information contained herein, including but not limited to the implied warranties of merchantability and fitness for a particular purpose. Agilent shall not be liable for errors or for incidental or consequential damages in connection with the furnishing, use, or performance of this document or of any information contained herein. Should Agilent and the user have a separate written agreement with warranty terms covering the material in this document that conflict with these terms, the warranty terms in the separate agreement shall control.**

© Agilent Technologies, Inc. 2017  
Printed in USA  
Agilent Technologies, Inc.  
2850 Centerville Road  
Wilmington, DE 19808-1610 USA

For Research Use Only  
Not for use in diagnostic procedures.



**S7891-10000**