

Agilent MassHunter Workstation – Offline Qualitative and Quantitative Analysis for LC/MS

Installation Guide

Step 1. Prepare for installation	2
Step 2. Install Microsoft Excel software (optional)	3
Step 3. Install the DA Reprocessor - Offline Utilities	5
Step 4. Install the Qualitative Analysis program	6
Step 5. Install the Quantitative Analysis program	8
Step 6. Install Quantitative Analysis Reporting	11
Step 7. Install Quantitative Analysis Supplemental files	14
Step 8. Configure Excel for MassHunter (optional)	15
Step 9. Finish the installation	16

Use this guide to install or upgrade MassHunter Workstation software.

This guide applies to and supports only:

- MassHunter Qualitative Analysis B.08.00 and later, until superseded
- MassHunter Quantitative Analysis B.08.00 and later, until superseded
- 64-bit Windows 7 Professional SP1 or Windows 10
- Excel 2013 or 2016 (optional)

Do not install on Windows XP or Windows Vista.

NOTE

Excel is not required to generate MassHunter Qualitative Analysis or Quantitative Analysis reports. You need to upgrade Excel only if you need to use custom report templates created in Excel, and if you are running Microsoft Excel or Office 2010 or earlier.



Step 1. Prepare for installation

CAUTION

Do not remove programs that need only service pack installation. Remove only the programs that you plan to upgrade at this time.

1 Use the **Uninstall a program** or **Programs and Features** command in Control Panel to remove programs that you plan to upgrade, if they are installed on your system.

- Microsoft Excel, if you need to upgrade.
- Agilent MassHunter Offline Utilities
- Agilent MassHunter Workstation Qualitative Analysis
- Agilent MassHunter Workstation Quantitative Analysis
- Agilent MassHunter Workstation Quantitative Analysis Compliance
- Agilent MassHunter Workstation Quantitative Analysis Reporting

Some of these programs require a reboot when you remove them. You can wait until all of the programs are removed before you reboot your computer.

2 Run Windows Update to make sure you have the latest critical updates and security fixes.

- Click **Start > Control Panel > System and Security > Windows Update**.

Verify Windows Update is completed before you continue.

CAUTION

If you do not run Windows Update, your system may be vulnerable to security problems. Confirm that the LAN power management has not been started by a Windows Update program.

Step 2. Install Microsoft Excel software (optional)

The MassHunter Qualitative Analysis and Quantitative Analysis programs include PDF-based report templates. You need to install or upgrade Excel only if you want to use custom Excel report templates.

Make sure that your version of Excel is compatible with your Windows operating system:

Table 1 Compatible Excel versions

Operating System	Qualitative Analysis B.08.00	Quantitative Analysis B.08.00
Windows 7	Excel 2013/Excel 2016	Excel 2013/Excel 2016
Windows 10	Excel 2016	Excel 2013/Excel 2016

- 1 If you plan to use Excel 2016, get Excel 2016 software directly from Microsoft.
- 2 Close all MassHunter Workstation programs.
- 3 Make sure that the DA Reprocessor program is not running.
- 4 Refer to instructions from Microsoft to install or upgrade Excel.
- 5 If you are prompted to enter the Product Key, do so.

If you do not enter the Product Key now, Microsoft Excel reminds you later, which can interfere with report automation.

The Product Key must be verified to activate your Microsoft product. Automatic verification requires an Internet connection. If your system does not have access to the Internet, the Activation Wizard starts and allows you to verify by telephone.

- 6 Select to run a custom installation.

Step 2. Install Microsoft Excel software (optional)

- 7 Make sure that these options, which are required by MassHunter to run reports, are enabled for installation. If not, click the program name and click **Run all from My Computer**.
 - Microsoft Office Excel
 - Office Shared Features > Visual Basic for Applications
 - Office Tools

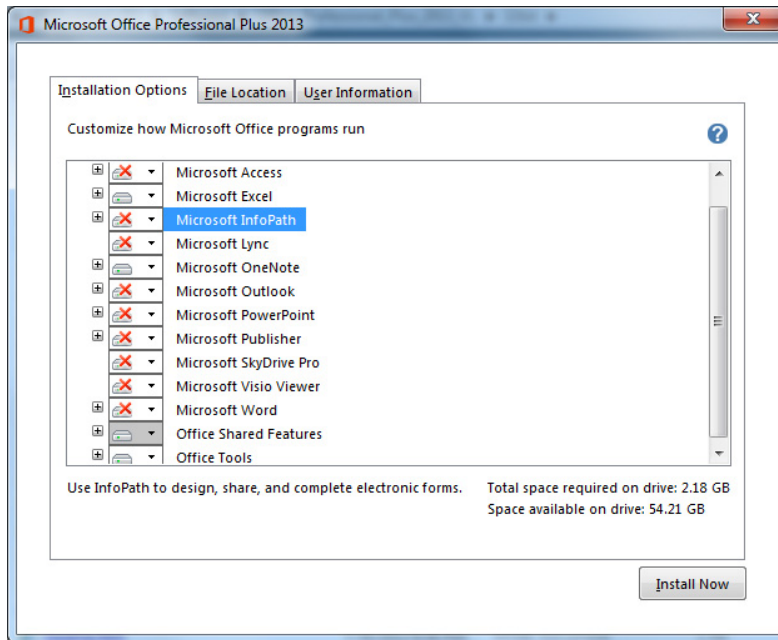


Figure 1 Microsoft Office installation options. For Microsoft Excel, you see only Microsoft Office Excel, Office Shared Features and Office Tools.

- 8 Click **Install Now** and continue the installation as instructed.
- 9 If you are prompted to get updates, click **Go to Office Online**. Follow the instructions to update Microsoft Excel or Microsoft Office.
- 10 Open Excel and click **Accept** if asked to agree to the Microsoft Office License Agreement.

If you don't, report printing can fail.

Step 3. Install the DA Reprocessor - Offline Utilities

Do this step only if you want to reprocess LC/MS data on an offline MassHunter system.

The Offline Utilities disc contains the DA Reprocessor program. The DA Reprocessor program lets you reprocess one or more data files by running a worklist which starts the Qualitative Analysis program for each file and method in the worklist.

- 1 Insert the MassHunter Acquisition Offline Utilities disc into the disc drive.
- 2 Double-click **Setup.exe**.
- 3 In the **License Agreement** page, click **I accept the terms of the license agreement**, and then click **Next**.
- 4 In the **Choose Destination Location** page, click **Next** to accept the default destination location.

The default is **C:\Program Files (x86)\Agilent\MassHunter\Workstation\Acquisition Offline**.

- 5 In the **Installation Complete** message, click **Finish**.

Refer to the Data Acquisition online Help for more information on running the DA Reprocessor program.

Step 4. Install the Qualitative Analysis program

Do this step if you want to install the Qualitative Analysis program. If you are installing just the service pack, go directly to [step 14](#).

- 1 Verify that no other program is running on your system, including Windows Update.

Installation of the Qualitative Analysis program can fail if Windows Update is running, even in the background.

- 2 Insert the Qualitative Analysis installation disc into the DVD drive.
- 3 From the installation disc, double-click **setup.exe**.
- 4 If **Windows User Account Control** asks you to allow the program to make changes to your system, click **Yes**.
- 5 In the **Welcome** page, click **Next**.
- 6 In the **License Agreement** page, click **I accept the terms of the license agreement**, and then click **Next**.
- 7 In the **Choose destination location** page, click **Next** to accept the default destination location.

The default is **C:\Program Files\Agilent\MassHunter\Workstation\Qual**.

- 8 In the **Choose location for customer data files** page, click **Next** to accept the default destination location.

The default is **D:\MassHunter**. Click **Change** if you need to change the location.

Note that some default worklists and methods expect customer data to be in **D:\MassHunter**. If the customer data folder is set to a different location, users can get an error message when they open these methods and worklists.

- 9 In the **Ready to install** page, review the settings, and then click **Install**.
- 10 If you get a message that indicates that the screen resolution is not set to the required resolution, click **OK**.
- 11 If Excel is not required on your computer, and you are warned that Excel is not installed, click **Yes** to continue the installation.
- 12 If you see a Notepad window that prompts you to install other options, close the Notepad window.
- 13 In the installation completion message, click **Finish**.

Step 4. Install the Qualitative Analysis program

14 If the folder **Service Packs** exists on the installation disc, or if a separate Service Pack disc is included, then:

- a** Open the **Service Packs** folder. If the folder contains another folder, such as **SP2**, open that folder.

As an alternative, the service pack file can be provided to you on a separate disc or by an Agilent representative or support service.

- b** Double-click the installation file, ending with **SPx.msi**.

Follow the instructions to install the service pack.

Step 5. Install the Quantitative Analysis program

Do this step if you want to install the Quantitative Analysis program. If you are installing just the service pack, go directly to [step 15](#).

- 1 Verify that no other program is running on your system. Installation of the Quantitative Analysis program fails if Windows Update is running, even in the background.
- 2 Insert Quantitative Analysis Disk 1/2 into the DVD drive.
- 3 From the installation disc, right-click **Setup_Quant.exe**, and then click **Run as administrator**.
- 4 In the welcome page, review the license agreement and accept the terms.
- 5 If needed, change the destination folder.

The default is **C:\Program Files\Agilent\MassHunter\Workstation\Quant**. Click **Change** if you need to change the location.

- 6 If needed, change the **Customer data folder**

The default is **D:\MassHunter**. Click **Change** if you need to change the location.

For a typical installation, use the same data file location that is used by the MassHunter Data Acquisition Workstation to store acquired data.

Note that some default worklists and methods expect customer data to be in **D:\MassHunter**. If the customer data folder is set to a different location, users can get an error indication when they open these methods and worklists.

- 7 Click **Next** to continue.

- 8 Select the features to install:

- **Blank Subtraction Add-in:** This add-in allows subtraction of the **Blank** and/or **DoubleBlank** sample final concentration and places the blank-subtracted concentrations into the target compound Custom Calculation column of the batch table. If a batch contains multiple **Blank** and/or **DoubleBlank** samples, the average blank concentration is used.
- **Peak Annotations Add-in:** In the Quantitative Analysis program, this add-in allows you to add an abbreviation to the batch table that indicates the reason for manually integrating target or ISTD compounds.

- **Zero Total Compound Add-in:** In the Quantitative Analysis program, this add-in allows you to zero the peaks for all compounds in a group.

The reporting templates are installed on the local hard drive with the program to MassHunter/Report Templates/Quant/. If you plan to use MassHunter Compliance, these templates must be uploaded to ECM before they can be accessed from the Quantitative Analysis program.

9 Choose the compliance type.

You can change compliance type after installation. For more information, refer to the *Quantitative Analysis Audit Trail and Compliance Quick Start Guide*.

10 Click **Desktop Icons**.

- 11** In the **Desktop Icons** page, mark the check boxes for the instruments workflows that apply. Clear the check boxes for the options that do not apply. See [Figure 2](#).

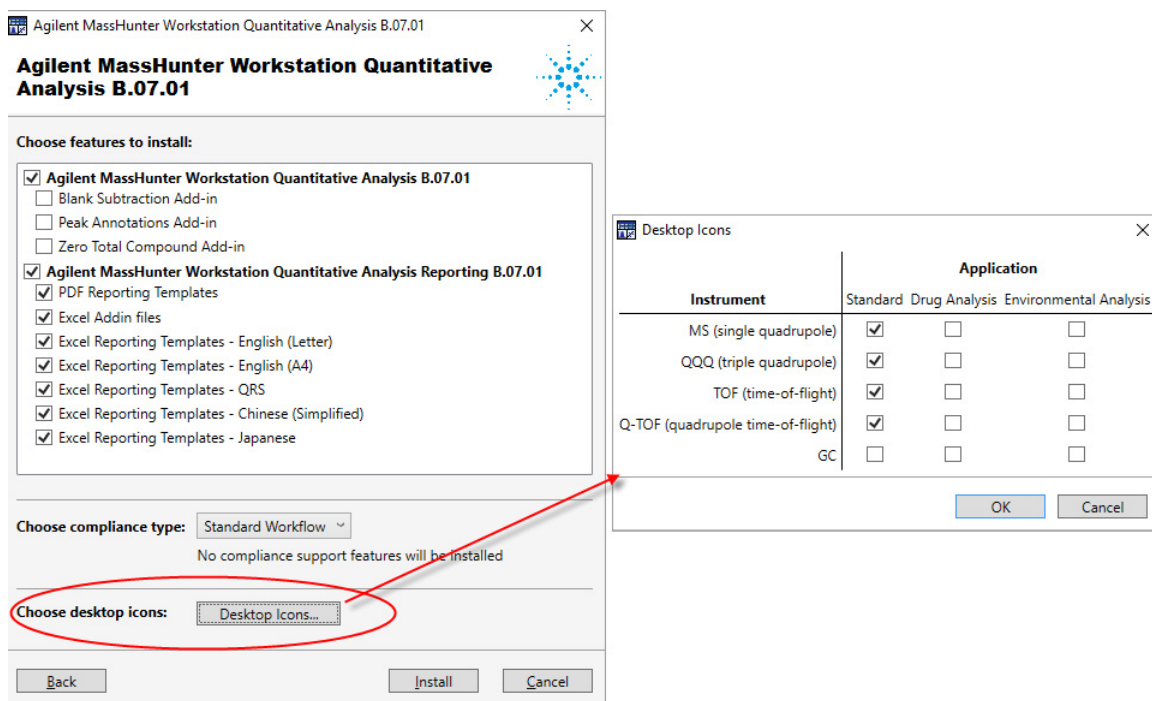
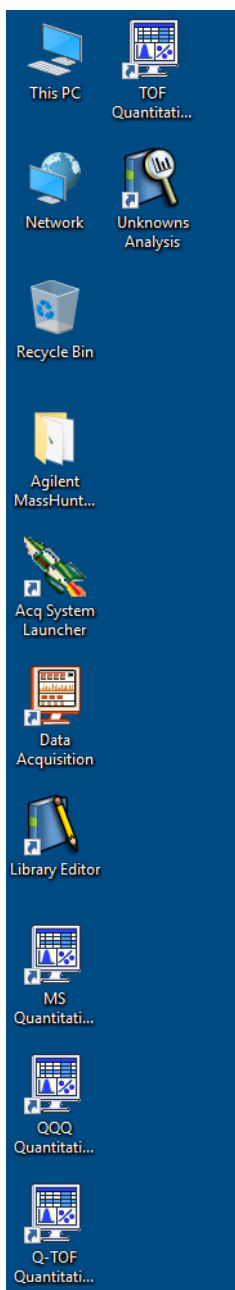


Figure 2 Choose Icons dialog box



After installation, you can change which icons are displayed. Click **Start > All Programs > Agilent > MassHunter Workstation > Quant Tools > Setup Desktop Icons**.

12 Click **Install**.

13 In the **Completed** message, click **Finish**.

14 Confirm that the icons you selected, as well as **Library Editor** and **Unknowns Analysis**, appear on your desktop.

15 If a service pack is available:

a If the folder **Service Packs** exists on the installation disc, then open the **Service Packs** folder. If the folder contains another folder, such as **SP1**, open that folder.

As an alternative, the service pack file can be provided to you on a separate disc or by an Agilent representative or support service.

b Locate the installation file, ending with **SPx.exe**.

c Follow the instructions to install the service pack.

Step 6. Install Quantitative Analysis Reporting

Do this step only if you need to upgrade your Quantitative Analysis Reporting program. If you are installing just the service pack, go directly to [step 10](#).

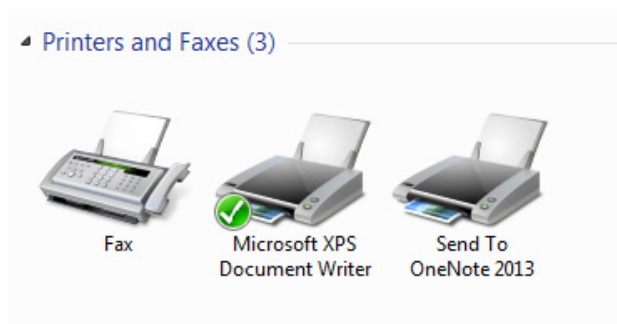
Note that Quantitative Analysis Reporting SP2 is required for Excel 2016.

- 1 Verify that no other program is running on your system. Installation of the Quantitative Analysis Reporting program will fail if Windows Update is running, even in the background.
- 2 From the root directory of the Quantitative Analysis installation disc, right-click **setup_quantreport.exe**, and then click **Run as administrator**.
- 3 Select desired language from the drop-down menu and click **OK**.
- 4 In the **Welcome** page, click **Next** to continue with the installation.
- 5 In the **License Agreement** page, mark the **I accept the terms of the license agreement**, and then click **Next**.
- 6 If needed, in the **Destination Folder** page, click **Change** to change the default destination location for the report templates. The default is **D:\MassHunter\Report Templates\Quant**.
- 7 In the **Setup Type** page, click **Typical**, **Complete**, or **Custom** setup, and then click **Next**.
 - A **Typical** or **Complete** installation installs all the program components and requires the most disk space.
 - A **Custom** installation presents you with an additional Custom Setup page that allows you to view the program components and choose which to install.
- 8 In the **Ready to Install the Program** page, click **Install** to begin.

When the installation begins, the **Installing Agilent MassHunter Workstation Quantitative Analysis Reporting** page appears.
- 9 In the **Completed** page, click **Finish**.
- 10 If a service pack is available:
 - a If the folder **Service Packs** exists on the installation disc, then open the **Service Packs** folder. If the folder contains another folder, such as **SP1**, open that folder.

As an alternative, the service pack file can be provided to you by an Agilent representative or support service.

- b** Locate the installation file, ending with **Reporting_SPx.exe**.
 - c** Right-click the installation file and click **Run as administrator**.
 - d** Follow the instructions to install the service pack.
- 11** Make sure the appropriate print drivers are installed.
- To use the HP LaserJet P3005d or P3015d printer, install the print driver from <http://welcome.hp.com/country/us/en/support.html>.
 - To print reports in the A4 format to HP PCL6 printers, install the printer driver patch from <http://support.microsoft.com/kb/935843>.
 - To use the Canon LBP3310 printer for Japanese Windows, install the printer driver from the installation disc.
- 12** Set the Microsoft XPS Document Writer as the default printer:
- a** Click **Start > Devices and Printers**.
 - b** Right-click **Microsoft XPS Document Writer** and click **Set as Default Printer**.



CAUTION

If no printer is set up as the default printer, reporting can fail.

If you installed Excel 2013 or Office 2013, you must change the default printer to **Microsoft XPS Document Writer**. These products automatically install Microsoft OneNote and set the default printer to OneNote. OneNote breaks some Excel report formats and causes extra pages to be printed.

Step 6. Install Quantitative Analysis Reporting

The Microsoft XPS Document Writer formats the Excel workbooks three to four times faster for networked printers because the formatting page set-up information is stored on the local computer. The report is processed by the Microsoft XPS Document Writer, but it is actually printed on the printer selected in the MassHunter program.

Step 7. Install Quantitative Analysis Supplemental files

Do this step if you want to copy these to your computer from the installation disc:

- Manuals
- Report template index
- Technical videos outline
- Data

- 1** From the MassHunter Quantitative Analysis Disk 2/3 installation DVD, right-click **Setup_Supplemental.msi**, and select **Install**.
- 2** Review the terms of the license and accept the terms.
- 3** Click **Advanced** or **Install**.

If you chose **Advanced**, you can change installation options.

- a** In the **Destination Folder** page, click **Change** if you want to change the target location for the supplemental items. The default location is **D:\MassHunter**. Click **Next**.
 - b** In the Product Features page, select the way you want to install each feature.
 - c** Click **Install**.
- 4** When prompted, remove DVD 2/3 and insert DVD 3/3. Click **OK**.
 - 5** Click **Finish**.

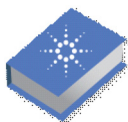
To view the supplemental materials, click **Start > All Programs > Agilent MassHunter Workstation > Quant Supplemental**.

Step 8. Configure Excel for MassHunter (optional)

Do this step only if Excel was upgraded after the Qualitative Analysis or Quantitative Analysis was installed or upgraded.

- 1 Click **Start > Control Panel > Programs and Features**.
- 2 If you need to configure Excel for Qualitative Analysis:
 - a Right-click **Agilent MassHunter Workstation Qualitative Analysis**.
 - b Click **Change**, and then click **Repair**.
 - c Follow the instructions to complete the process.
- 3 If you need to configure Excel for Quantitative Analysis:
 - a Right-click **Agilent MassHunter Workstation Quantitative Analysis**.
 - b Click **Change**, and then click **Repair**.
 - c Follow the instructions to complete the process.

Step 9. Finish the installation



- 1 From the MassHunter Data Analysis Resource Disc, install the **MassHunter Data Analysis Resource App**.

The **Resource App** gives you access to MassHunter Qualitative Analysis and Quantitative Analysis user guides and training material.

NOTE

The training videos and interactive eFamiliarization guides on the Resource App can greatly facilitate user learning of MassHunter Qualitative Analysis and MassHunter Quantitative Analysis programs. Make sure to install the Resource App.

- 2 For Windows 10: Install Adobe Reader.

Go to www.adobe.com to download Adobe Reader. Adobe Reader is needed to open report files that are not Excel-based.

www.agilent.com

In This Book

This book contains installation instructions to install or upgrade an offline copy of the Agilent MassHunter Workstation Software.

© Agilent Technologies, Inc. 2017

Printed in USA
Revision A, January 2017



G3335-90223



Agilent Technologies