



# Agilent MassHunter Workstation Software for TOF, Q-TOF, and IM-QTOF LC/MS

## Upgrade Guide

- Step 1. Prepare for installation 2
- Step 2. Install Microsoft Excel software (optional) 3
- Step 3. Install the Acquisition program 3
- Step 4. Install the Qualitative Analysis program 5
- Step 5. Install the Quantitative Analysis program 5
- Step 6. Install Service Packs for Data Acquisition (if needed) 5
- Step 7. Install Quantitative Analysis Reporting 6
- Step 8. Configure Excel (optional) 6
- Step 9. Confirm and update the LC firmware 7
- Step 10. Finish the installation 8
- Step 11. Configure the instrument 9

Use this guide to upgrade an online MassHunter Data Acquisition Workstation to B.08.00 or higher.

Before you begin, make sure you have a copy of the *Offline Qualitative and Quantitative Analysis Installation Guide* on hand.

### NOTE

Excel is not required to generate MassHunter Qualitative Analysis or Quantitative Analysis reports. You need to upgrade Excel only if you need to use custom report templates created in Excel, and if you are running Microsoft Excel or Office 2010 or earlier.



**Agilent Technologies**

## Step 1. Prepare for installation

- 1 Use the **Uninstall or change a program** command in Control Panel to remove programs that you will be upgrading. *Do not remove programs for which you need only to install a service pack.*
  - Microsoft Excel, if you need to upgrade.
  - Agilent MassHunter Workstation Qualitative Analysis
  - Agilent MassHunter Workstation Quantitative Analysis
  - Agilent MassHunter Workstation Quantitative Analysis Reporting
  - Agilent MassHunter Workstation Quantitative Analysis Compliance

### NOTE

Remove only the programs that you plan to upgrade at this time. Do not remove the Agilent MassHunter Workstation Data Acquisition at this time.

---

- 2 Back up the data, method and worklist files in the **D:\MassHunter** folder. Use the back-up method of your choice. You can create the folder **D:\MassHunter\_Archive** to store the files that you want to back up.

The uninstallation program keeps your data, method and worklist files. It also backs up your tuning and hardware setting files, which are restored during installation. Do not move, remove or rename the **D:\MassHunter** folder, or your tuning and hardware settings will not be saved.
- 3 Run Windows Update to make sure you have the latest critical updates and security fixes.

Make sure Windows Update is completed before you continue.

### CAUTION

If you do not run Windows Update, your system may be vulnerable to security problems. Confirm that the LAN power management has not been activated by a Windows Update program.

---

## Step 2. Install Microsoft Excel software (optional)

The MassHunter Qualitative Analysis and Quantitative Analysis programs include PDF-based report templates. You need to upgrade Excel only if you want to use custom Excel report templates.

- Refer to the *Offline Qualitative and Quantitative Analysis Installation Guide* to install and configure Excel.

## Step 3. Install the Acquisition program

- 1 Check that no other program is running on your system, including Windows Update.
- 2 Put the Data Acquisition installation disc into the disc drive.  
The welcome page appears.
- 3 Click **Uninstall MassHunter Data Acquisition Software**, and then follow the instructions on the page to remove the current program.
- 4 Click **Install MassHunter Data Acquisition Software**, and then follow the instructions to install the software.

- For Windows 7: If you get a “Setup Failed” message, follow the instructions in the message to correct the error.
- Click **Install** in the first installer page.
- In the License Agreement page, click **I accept the terms in the License Agreement**, and then click **Next**.
- In the **Choose destination location** page, click **Next** to accept the default destination location.  
The default is **C:\Program Files (x86)\Agilent\MassHunter\Workstation\Acq.**
- If prompted, in the **Choose location for customer data files** screen, check that the default of **D:\MassHunter** is displayed in the text box, and then click **Next**.
- In the **Ready to install** page, click **Install**.  
The Setup Status page now appears.
- If you are asked to allow Agilent Technologies to install software on the computer, click **Yes**.
- If you get a message that indicates that the screen resolution is *not* set to the required resolution, click **OK**.

### Step 3. Install the Acquisition program

- If you see a Notepad window that prompts you to install other options, close the Notepad window.
  - When the installation completion message is displayed, click **Finish**.
- 5** If your system includes an Agilent 1290 Infinity LC Injector HTC/HTS, click **Install HTC/HTS Driver**.
  - 6** Update the firmware:
    - a** Insert the Firmware installation media.
    - b** Click **Update MS Firmware** in the welcome page.  
Follow the instructions to update the firmware.
  - 7** For 6560: From the Data Acquisition disc, in the **IM-MS Browser** folder:
    - a** Double-click **setup.exe**. Follow the instructions to install the IM-MS Browser program.
    - b** Copy the example files from the **IM-MS Browser** folder to your computer.
  - 8** For 6560: If needed, update the IM Firmware and DSP Logic. Contact your Agilent representative for more information.

## Step 4. Install the Qualitative Analysis program

Do this step only if you are upgrading the Qualitative Analysis program at this time.

- Refer to the *Offline Qualitative and Quantitative Analysis Installation Guide* for the to install the Qualitative Analysis program.

Do not install any other MassHunter program until instructed to do so.

## Step 5. Install the Quantitative Analysis program

Do this step only if you are upgrading the Quantitative Analysis program at this time.

If you are installing or upgrading Quantitative Analysis to run in Compliance mode, refer also to the Quantitative Analysis Compliance Mode *Quick Start Guide*.

- Refer to the *Offline Qualitative and Quantitative Analysis Installation Guide* for the to install the Quantitative Analysis program.

Do not install any other MassHunter program until instructed to do so.

## Step 6. Install Service Packs for Data Acquisition (if needed)

- 1 Put the Data Acquisition installation disc into the disc drive.

If you received a separate Service Pack installation disc, insert that disc instead.

- 2 If the folder **Service Packs** exists on the installation disc, then:

- a Open the **Service Packs** folder. If the folder contains another folder, such as **SP1**, open that folder.
- b Locate the installation file, which ends with **SP x.exe**.
- c Right-click the installation file and select **Run as administrator**.
- d Follow the instructions to install the service pack.

## Step 7. Install Quantitative Analysis Reporting

Do this step only if you need to upgrade Quantitative Analysis Reporting.

- Refer to the *Offline Qualitative and Quantitative Analysis Installation Guide* for the to install the Quantitative Analysis program.

Do not install any other MassHunter program until instructed to do so.

## Step 8. Configure Excel (optional)

Do this step only if Excel was upgraded after the Qualitative Analysis or Quantitative Analysis was installed or upgraded.

- 1** Click **Start > Control Panel > Programs and Features**.
- 2** If you need to configure Excel for Qualitative Analysis:
  - a** Right-click **Agilent MassHunter Workstation Qualitative Analysis**.
  - b** Click **Change**, and then click **Repair**.
  - c** Follow the instructions to complete the process.
- 3** If you need to configure Excel for Quantitative Analysis:
  - a** Right-click **Agilent MassHunter Workstation Quantitative Analysis**.
  - b** Click **Change**, and then click **Repair**.
  - c** Follow the instructions to complete the process.

## Step 9. Confirm and update the LC firmware

- 1 Start the Data Acquisition program.
- 2 Click **File > Print > Instrument Configuration Report**.
- 3 Click **Screen**.
- 4 Click **OK**.
- 5 Go to [http://www.chem.agilent.com/\\_layouts/agilent/downloadFirmware.aspx?wid=69761](http://www.chem.agilent.com/_layouts/agilent/downloadFirmware.aspx?wid=69761) and check that you have the most recent firmware for your instrument.
- 6 If you need to update your LC firmware, follow the instructions on the web site. Make sure you use the latest firmware update tool, as instructed on the web site.
- 7 Check that the firmware for the G1369A Agilent LAN Interface card is the latest version available:
  - a Start a Command Prompt in Windows.
  - b Type `telnet 192.168.254.11` in the Command Prompt window and press **Enter**.
  - c Type `/` in the Telnet window.

The LAN Interface card displays its current configuration information.

The LAN Interface card requires 1.10 firmware or higher. If an upgrade is needed, please contact your Agilent representative.

## Step 10. Finish the installation

- 1 If this is an upgrade installation, copy or move the files that you backed up at the beginning of the upgrade process.

If you backed up the files to **D:\MassHunter\_Archive**, copy the files to the **D:\MassHunter** folder.

- 2 Create a system recovery disc of your installed system.  
Check with your IT department for the appropriate backup procedure.
- 3 Install or enable any other program that you will use with your MassHunter workstation. Refer to the installation guide or quick start guide for these programs.
- 4 If Excel is installed on your computer, make sure that the trust settings in Excel are set for all MassHunter users, including the guest account that is set up for compliance. See the *Offline Qualitative and Quantitative Analysis Installation Guide* for more information.
- 5 For each Resource Disc that is included with your product, install the **Resource App**.

The **Resource Apps** gives you access to all MassHunter user guides, including eFamiliarization guides and the animated instrument Maintenance Guide.



### NOTE

The training material on the Resource Apps can greatly facilitate user learning of MassHunter programs and instrument maintenance. Make sure to install all Resource Apps.



## Step 11. Configure the instrument

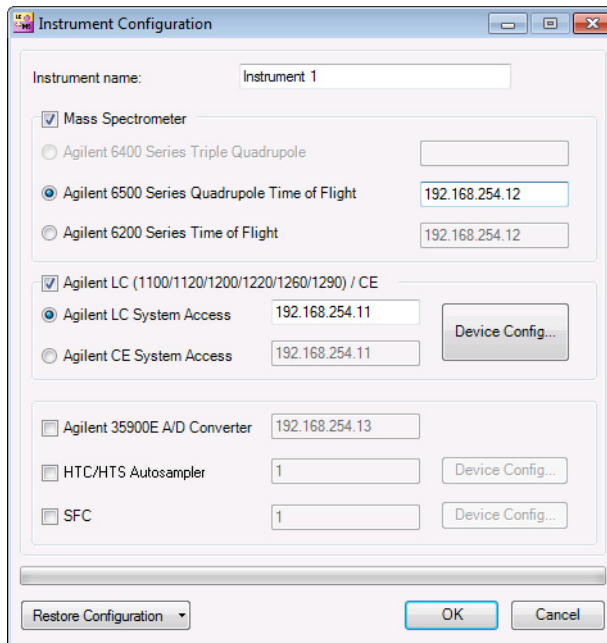
If available, configure the device from the Device Configuration tool in the Data Acquisition program. Go to **Tools > Device Config**.

Some HPLC instrument setups can be configured only through the Device Configuration tool from the Data Acquisition program. The Capillary Pump is an example.

In this step, you configure the TOF, Q-TOF, or IM-QTOF instrument and the HPLC instrument.

- 1** Open the **Agilent MassHunter Workstation** folder on the desktop, and then double-click **Acq Tools**.
- 2** Double-click the **Instrument Configuration** tool.
- 3** In the Instrument Configuration dialog box:
  - a** If you want to change the name of the instrument, type a new name for **Instrument name**.
  - b** Mark the **Mass Spectrometer** check box.
  - c** Click the option for your LC/MS instrument.
  - d** Mark the **Agilent LC (1100/1120/1200/1220/1260/1290)/CE** check box.
  - e** Click **Agilent LC System Access**.
  - f** Click **Device Config** and configure the LC system.
  - g** Click **OK**.

## Step 11. Configure the instrument



**Figure 1** Instrument Configuration Dialog Box

- 4 When configuration is completed, click **OK**.
- 5 If your system includes an Agilent 1290 Infinity LC Injector HTC/HTS, and you want to use cycles that were created in a previous version of MassHunter Workstation:
  - a Open the Data Acquisition program.
  - b Set the **Context** to **Acquisition**.
  - c Under **HTC/HTS**, right-click the module image.
  - d Click either **Import Cycle** or **Open FSE**, depending on whether an FSE license is registered on your system.
  - e If you see the FSE dialog box, then from under **PAL Cycle List**, select **PAL Cycles**.
  - f Select the HTC/HTS cycles to import from the Import Cycle dialog box. Click **OK**.

**This page intentionally left blank.**

[www.agilent.com](http://www.agilent.com)

## In This Book

This book contains installation instructions to upgrade Agilent MassHunter Workstation Software for TOF, Q-TOF, and IM-QTOF LC/MS Systems.

This guide supports Agilent MassHunter Workstation Software for TOF, Q-TOF, and IM-QTOF LC/MS B.08.00.

© Agilent Technologies, Inc. 2017

Printed in USA  
Revision C, January 2017



G3335-90208



**Agilent Technologies**