



MassHunter Workstation 11.0  
For Agilent LC/TOF and LC/Q-TOF

## Installation Guide

# Notices

## Document Identification

D0012049  
July 2021 Revision A.00

## Copyright

© Agilent Technologies, Inc. 2021

No part of this manual may be reproduced in any form or by any means (including electronic storage and retrieval or translation into a foreign language) without prior agreement and written consent from Agilent Technologies, Inc. as governed by United States and international copyright laws.

Agilent Technologies, Inc.  
5301 Stevens Creek Blvd.  
Santa Clara, CA 95051

## Software Revision

This guide is valid for the 11.0 revision or higher of the MassHunter Data Acquisition for Agilent LC/TOF and LC/Q-TOF and compatible MassHunter Workstation programs, until superseded.

## Software Manufacturing



Manufactured for Agilent  
Technologies  
5301 Stevens Creek Blvd  
Santa Clara, CA 95051

## Warranty

The material contained in this document is provided "as is," and is subject to being changed, without notice, in future editions. Further, to the maximum extent permitted by applicable law, Agilent disclaims all warranties, either express or implied, with regard to this manual and any information contained herein, including but not limited to the implied warranties of merchantability and fitness for a particular purpose. Agilent shall not be liable for errors or for incidental or consequential damages in connection with the furnishing, use, or performance of this document or of any information contained herein. Should Agilent and the user have a separate written agreement with warranty terms covering the material in this document that conflict with these terms, the warranty terms in the separate agreement shall control.

## Technology Licenses

The hardware and/or software described in this document are furnished under a license and may be used or copied only in accordance with the terms of such license.

## Restricted Rights Legend

U.S. Government Restricted Rights. Software and technical data rights granted to the federal government include only those rights customarily provided to end user customers. Agilent provides this customary commercial license in Software and technical data pursuant to FAR 12.211 (Technical Data) and 12.212 (Computer Software) and, for the Department of Defense, DFARS 252.227-7015 (Technical Data - Commercial Items) and DFARS 227.7202-3 (Rights in Commercial Computer Software or Computer Software Documentation).

## Safety Notices

### CAUTION

A **CAUTION** notice denotes a hazard. It calls attention to an operating procedure, practice, or the like that, if not correctly performed or adhered to, could result in damage to the product or loss of important data. Do not proceed beyond a **CAUTION** notice until the indicated conditions are fully understood and met.

### WARNING

A **WARNING** notice denotes a hazard. It calls attention to an operating procedure, practice, or the like that, if not correctly performed or adhered to, could result in personal injury or death. Do not proceed beyond a **WARNING** notice until the indicated conditions are fully understood and met.

# In This Book

This book provides instructions to install the MassHunter Workstation software in these configurations:

- Workstation (standalone, no content management)
- Networked Workstation (networked, with content management on separate server)

Note that a Networked Workstation requires an OpenLab Server/ECM XT software product. OpenLab Server/ECM XT products provide a central secure file storage for scientific data. OpenLab Server supports the storage of data acquired, analyzed, and processed by Agilent data systems, such as MassHunter Acquisition, Quant and BioConfirm. OpenLab ECM XT extends the storage scope to support data generated by third party data systems, office files and any other type of file.

## **1 Preparation**

This chapter describes the preparation steps to install MassHunter Workstation with Control Panel.

## **2 Installation**

This chapter describes how to install the MassHunter Workstation software. For the Networked Workstation, an OpenLab Server or ECM XT server is also required.

## **3 OpenLab Control Panel Initialization**

This chapter describes the steps you take to initialize Control Panel when you run MassHunter Workstation for the first time. If you are connecting a Networked Workstation to an existing OpenLab Server/ECM XT server, some steps might already be done.

This page intentionally left blank.

# Contents

## **1 Preparation 1**

Step 1. Configure Windows 2

Step 2. Prepare configuration options 3

Step 3. Install the OpenLab Server/ECM XT server (for Networked Workstation only) 3

## **2 Installation 5**

Step 1. Install MassHunter Data Acquisition 6

Step 2. Install other MassHunter programs 12

Step 3. Run Software Verification 13

Step 4. Configure Windows Defender 14

To improve performance on standalone MassHunter Workstations 16

## **3 OpenLab Control Panel Initialization 17**

Step 1. Start OpenLab Control Panel and add license 18

Step 2. Create initial Project 20

Step 3. Initialize instrument and start MassHunter Acquisition 24

This page intentionally left blank.

# 1

## Preparation

Step 1. Configure Windows 2

Step 2. Prepare configuration options 3

Step 3. Install the OpenLab Server/ECM XT server (for Networked Workstation only) 3

This chapter describes the preparation steps to install MassHunter Workstation with Control Panel.

MassHunter Workstation with Control Panel can be installed in these configurations:

- **Workstation** (standalone system with no content management)
- **Networked Workstation** (client computer with content management on a separate server)

You prepare the MassHunter Workstation computer the same way, regardless of the configuration.

## Step 1. Configure Windows

- 1 Decide on a computer name.

The computer name will be reflected in the license. To avoid extra effort, do not change the computer name after installing MassHunter Workstation.

### NOTE

To make sure that a DNS server can resolve the computer name, follow the internet standard for protocols (*RFC952*) and use only the following characters:

- Letters (a-z, A-Z)
- Digits (0-9)
- Hyphen (-)

*Do not use an underscore.* Installation is not possible if the computer name contains an underscore.

- 2 If needed, install the Windows operating system from the Microsoft installation media or qualified PC image media provided by your IT department. During the setup, provide the computer name, administrator password and network settings.

Choose to either join an existing domain or set up the system in a workgroup.

- 3 In Microsoft Control Panel under **System > Windows activation**, click **Change product key**. Enter a valid value to activate Windows.
- 4 Update to the latest Windows 10 edition in accordance to the guidelines of your local IT department.
- 5 Make sure that the latest Windows 10 security, quality updates and feature updates (optional) are installed in accordance with the guidelines of your IT department.
- 6 Check that your computer meets all requirements. Refer to the *MassHunter Networked Workstation 11.0 Requirements* document.  
  
Use this PDF to check that your settings comply with the network requirements, and to determine whether your hardware and software will support the system.
- 7 Make sure Windows Defender is properly installed and configured. Be sure to open the firewall ports listed in the Firewall Settings in the *MassHunter Networked Workstation 11.0 Requirements* document.
- 8 In the Microsoft Control Panel under **Date and Time**: Choose the time zone of your regional location.



## Preparation

### Step 2. Prepare configuration options

- 9 Configure your Ethernet connection to the instrument. Agilent bundled PCs are already configured with the IP address for the network adapter connected to the instrument LAN. If your computer is not an Agilent bundled PC, set the IP address for the network adapter connected to the instrument LAN.

## Step 2. Prepare configuration options

To simplify installation of the software, decide on configuration options before you begin the actual software installation.

- 1 Prepare an account with administrative privileges to run the installation.
- 2 To allow the successful installation and activation of all components, make sure that the LAN cable is connected and a network is available. A local network is sufficient. If you install the workstation without a network cable, the activation of the Content Management component will fail and return an error.
- 3 If needed, disable any antivirus software during the installation.
- 4 Check Agilent SubscribeNet service for software updates for your installation package and software products.

## Step 3. Install the OpenLab Server/ECM XT server (for Networked Workstation only)

The OpenLab Server/ECM XT server stores data for Networked Workstations in a manner that supports compliance with 21 CFR Part 11. It provides secure data storage with access control and an audit trail. Data files are versioned to ensure data integrity and traceability. In addition, OpenLab ECM XT provides electronic signatures, allowing users to sign off on data.

- If you don't already have one installed, install an OpenLab Server/ECM XT server for your work group.

Refer to the OpenLab Server/ECM XT server installation guide.

This page intentionally left blank.

## 2

# Installation

- Step 1. Install MassHunter Data Acquisition **6**
- Step 2. Install other MassHunter programs **12**
- Step 3. Run Software Verification **13**
- Step 4. Configure Windows Defender **14**
- To improve performance on standalone MassHunter Workstations **16**

This chapter describes how to install the MassHunter Workstation software. For the Networked Workstation, an OpenLab Server or ECM XT server is also required.

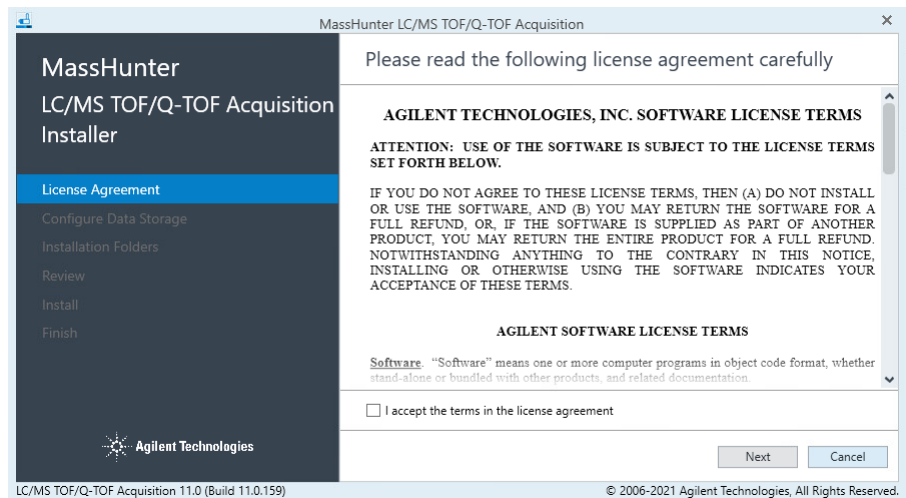
Follow these steps regardless of your MassHunter Workstation configuration.

For Networked Workstations, you must be an OpenLab Shared Services user with the System Administrator role to complete the MassHunter Workstation installation.

## Step 1. Install MassHunter Data Acquisition

If you do not plan to install MassHunter Data Acquisition on your computer, you can skip this step. You can also install MassHunter programs in any order.

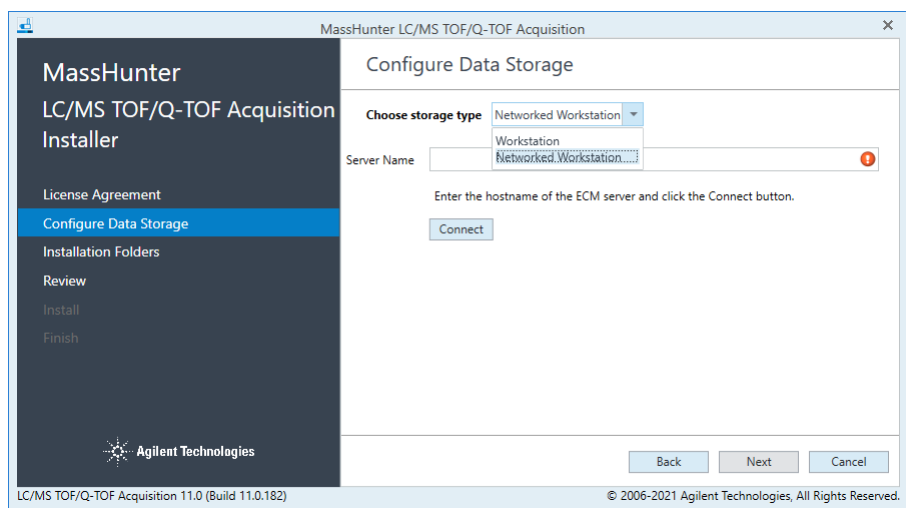
- 1 From the installation media, run the setup program **SetupQTOF.exe**.
- 2 Read and agree to the **License Terms** and mark the check box next to **I accept the terms in the license agreement**.
- 3 Click **Next**.



## Installation

### Step 1. Install MassHunter Data Acquisition

- 4 If OpenLab Shared Services is not already installed on your PC, you are prompted for the data storage type. Configure the data storage as appropriate, then click **Next**.



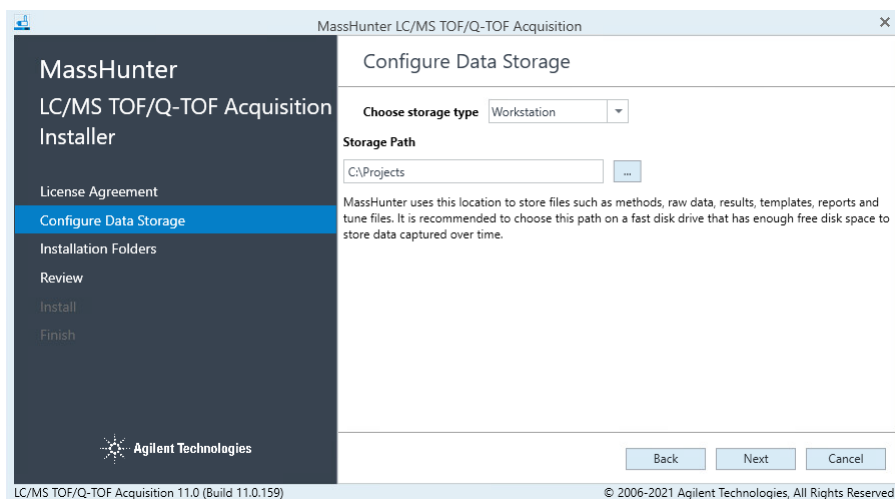
The choices are:

- **Workstation** - Files are stored on the local file system with no content management.
- **Networked Workstation** - Files are stored on an external OpenLab content management server.

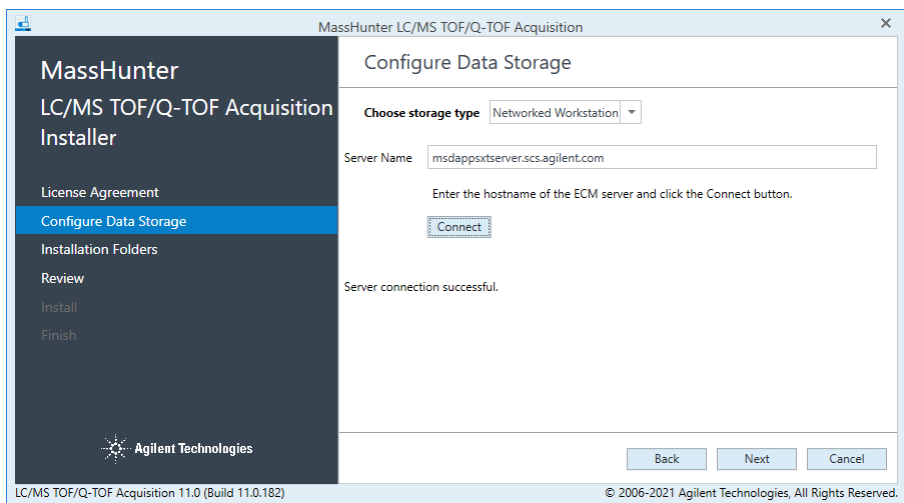
### CAUTION

Once the Data Storage Configuration has been set and installed to disk, this setting can be safely changed only by removing and re-installing the software. Make sure you select the correct configuration before you continue.

**Workstation** All MassHunter files (such as data, methods, report templates, and reports) will be stored on the local file system. For **Storage Path**, enter or browse for the folder where you would like to store all of your user-generated data, including methods and reports.



**Networked Workstation** All MassHunter files (such as data, methods, report templates, and reports) will be stored on an external OpenLab Server/ECM XT server. For this configuration type, you need to enter the name of the server that you want to connect to. After you enter the name of the server, click **Connect** to verify the connection to this server.



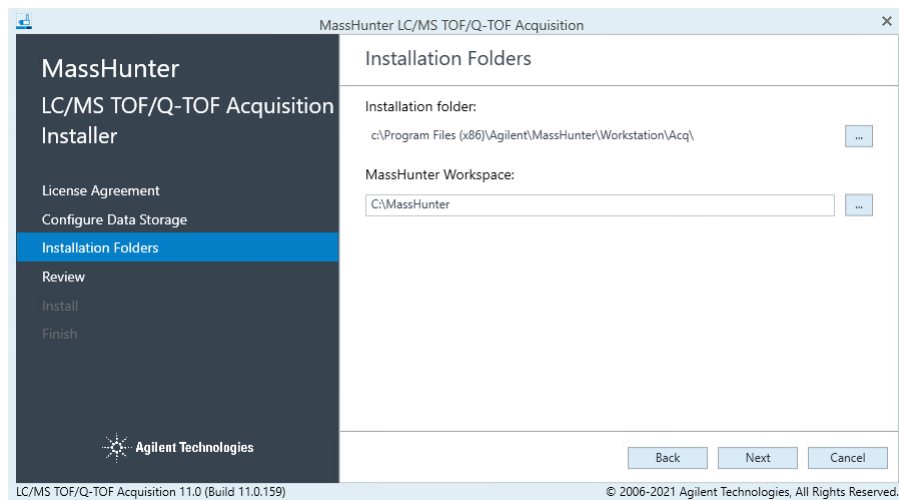
## Installation

### Step 1. Install MassHunter Data Acquisition

- 5 In the Installation Folders page, select the folders for your installation files and MassHunter Workspace, then click **Next**. The workspace is used to store the instrument configuration, log files, and the chemical data dictionary.

#### NOTE

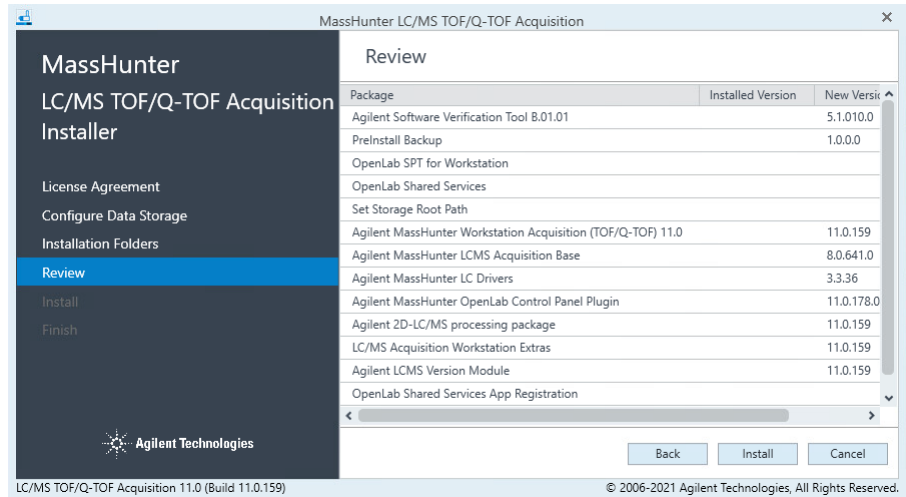
If another MassHunter application has been installed previously, the option to select a different MassHunter Workspace is disabled.



## Step 1. Install MassHunter Data Acquisition

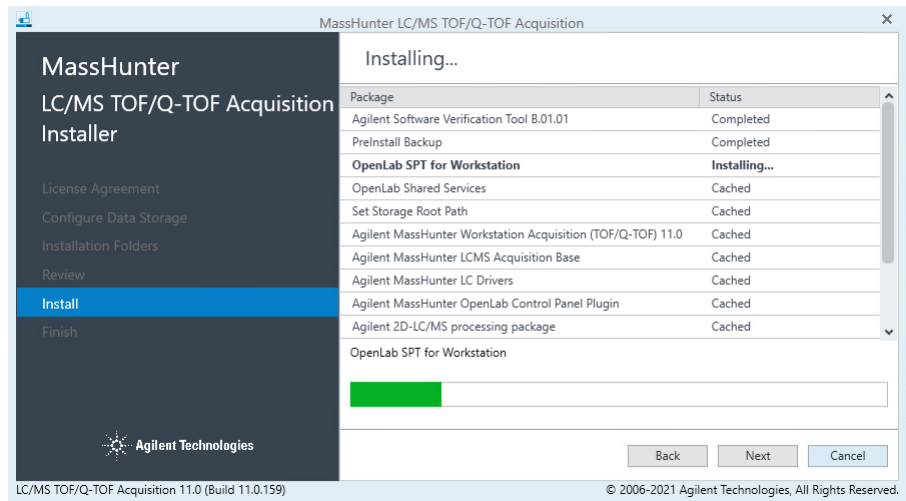
- 6 In the **Review** page, review the applications that will be installed, then click **Install**.

When you click **Install**, the installation of required packages will start.



- 7 If you are prompted whether to allow the publisher to make changes to your device, click **Yes**.

The installation continues, displaying the progress of the installation.





## Installation

### Step 1. Install MassHunter Data Acquisition

- 8 Continue the installation as prompted.
  - If prompted, select **Restart the computer now** each time you see it. This can happen multiple times.
  - Click **Next** or **Finish** to continue the installation each time you are prompted.
- 9 When the installation is complete, the Control Panel icon is displayed on your desktop.



## Step 2. Install other MassHunter programs

Install other MassHunter programs as needed, such as **Quantitative Analysis**, **Qualitative Analysis**, or **BioConfirm**.

- 1 Run the installation program on the media for each program. Follow the instructions that are presented to you.



- 2 For BioConfirm and Quantitative Analysis on a Networked Workstation only, register OpenLab Shared Services.
  - For **BioConfirm**, if OpenLab Settings are not registered as the last step of BioConfirm installation, click **Start > Agilent MassHunter BioConfirm > Tools for BioConfirm 11.0 > Register OpenLab Settings**. All default users/roles/groups are added, and permissions for BioConfirm are loaded into the OpenLab Control Panel.
  - For **Quantitative Analysis**, click **Start > Agilent MassHunter Quantitative > Quantitative Analysis Tools > Setup ECM Server**. All default users/roles/groups are added, and permissions for Quantitative Analysis are loaded into the OpenLab Control Panel. This step is not offered as part of the Quantitative Analysis installation, so it must always be done.

## Step 3. Run Software Verification

The Software Verification Tool (SVT) provides documentary evidence that your system has been built and installed correctly, and that your system has been installed correctly.

- 1 From the Windows Start menu, go to **Agilent Technologies > Software Verification Tool**.
- 2 Select the components to qualify.
- 3 Select **Qualify**.

The system will run the application and generate a Software Verification Report.

- 4 If the report indicates failure, verify the computer requirements and reinstall the data system.

Do not use the system until the Software Verification Report gives a **pass** result.

## Step 4. Configure Windows Defender

Agilent supports the use of Microsoft Windows Defender to protect your MassHunter system from viruses and other malware and threats.

### NOTE

Agilent does exhaustive testing on a variety of software and hardware configurations to ensure that every configuration that Agilent sells works as designed. However, Agilent is not able to test every combination of 3rd party computer security (antivirus, anti-malware, and firewall) programs for compatibility. The customer is responsible for determining the compatibility of any 3rd party software that runs with an Agilent product. If a 3rd party computer security program causes problems for an Agilent product, Agilent can request that such program be disabled or removed before Agilent provides support.

- 1 Open the firewall ports listed in the Firewall Settings in the *MassHunter Networked Workstation 11.0 Requirements* document.
- 2 Exclude these folders from the antivirus scan. If you want to scan these folders, do this while the system is not acquiring or analyzing data.
  - [C:\]DsData\DsWithive
  - [C:\]DsData\DsWithont
  - [C:\]DsData\DsWithonx
  - [C:\]Program Files (x86)\Agilent Technologies
  - [C:\]ProgramData\Agilent
  - [C:\]ProgramData\Agilent IPB Files
  - [C:\]ProgramData\Agilent Technologies
  - [C:\]ProgramData\ChromatographySystem
  - [C:\]ProgramData\Firebird
  - [C:\]ProgramData\IsolatedStorage

Scanning causes slowness and runs to be aborted due to concurrent access to the same file by the AV program and MassHunter application.

Refer to the antivirus software documentation to configure folder exclusions.

**3 Behavior Monitoring:** Add these programs to Approved programs.

C:\Program Files (x86)\Agilent Technologies\...

- OpenLab Services\Automation\AutomationServerHost.exe
- OpenLab Services\Diagnostics\DiagnosticsToolsServiceHost.exe
- OpenLab Services\Licensing\Flexera\ladmin.exe
- OpenLab Services\Licensing\Licensing.Service.Host.exe
- OpenLab Services\Server\SharedServicesHost.exe
- OpenLab Services\UI\Agilent.OpenLab.ControlPanel.exe

### CAUTION

**If any of the excluded files become infected, it will not be detected. Make sure to routinely scan these files when the instrument is not running. For example, configure a scheduled AV scan to occur on a daily or weekly basis during a period when the instrument is not used.**

**4 Realtime monitoring:** Add this folder to the exclusion list of Realtime Monitoring setting:

C:\Program Files (x86)\Agilent Technologies\

## To improve performance on standalone MassHunter Workstations

Computers running MassHunter Workstation can show slow performance when they are not connected to the internet.

The Windows operating system has routines built into its operation that causes it to continuously search for an online connection in order to update to all the latest Windows security certificates when using secure software.

Do this step to disable continuous search.

- 1 Open Internet Explorer and select **Tools> Internet Options**. In the **Advanced** tab, clear the following check boxes:
  - **Security> Check for publisher's certificate revocation**
  - **Security> Check for server certificate revocation**
- 2 Change or add the following registry keys:
  - [HKEY\_LOCAL\_MACHINE\SOFTWARE\Policies\Microsoft\SystemCertificates\AuthRoot]  
"DisableRootAutoUpdate"=dword:00000001
  - [HKEY\_LOCAL\_MACHINE\SOFTWARE\Wow6432Node\Policies\Microsoft\SystemCertificates\AuthRoot]  
"DisableRootAutoUpdate"=dword:00000001
- 3 Make a note that you turned off the Root Certificates, as this can prevent users from installing other applications.



## 3

# OpenLab Control Panel Initialization

Step 1. Start OpenLab Control Panel and add license **18**

Step 2. Create initial Project **20**

Step 3. Initialize instrument and start MassHunter Acquisition **24**

This chapter describes the steps you take to initialize Control Panel when you run MassHunter Workstation for the first time. If you are connecting a Networked Workstation to an existing OpenLab Server/ECM XT server, some steps might already be done.

## Step 1. Start OpenLab Control Panel and add license

- 1 On the desktop, double-click the Control Panel icon.



For Networked Workstation, the server login dialog box is displayed. Log in as a user with an account on the OpenLab Server/ECM XT server to continue.



The Control Panel initializes and then opens.

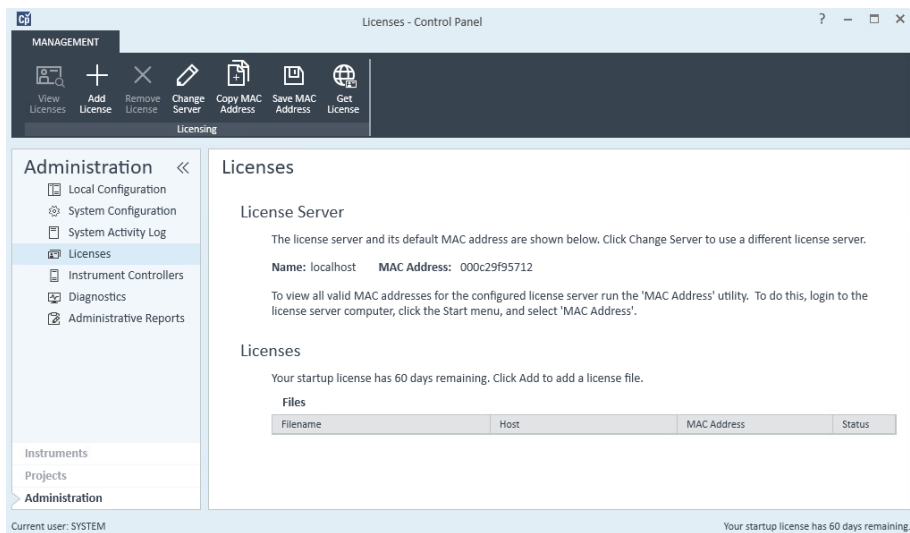
- 2 Add licenses for each MassHunter program that is installed. Refer to the *MassHunter Workstation Administration Guide* and the *MassHunter Help & Learning* for details.



## OpenLab Control Panel Initialization

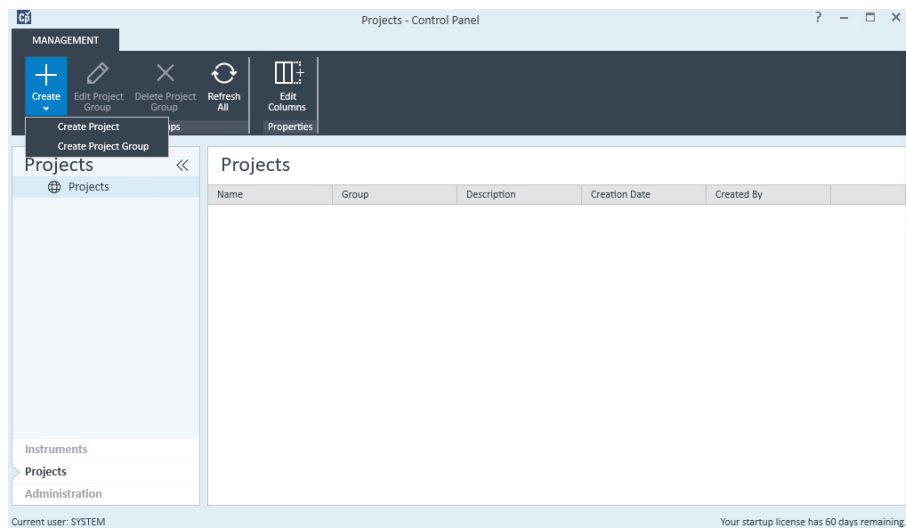
### Step 1. Start OpenLab Control Panel and add license

You can get and add a license at a future date. Your included startup license enables full use of MassHunter programs for 60 days.



## Step 2. Create initial Project

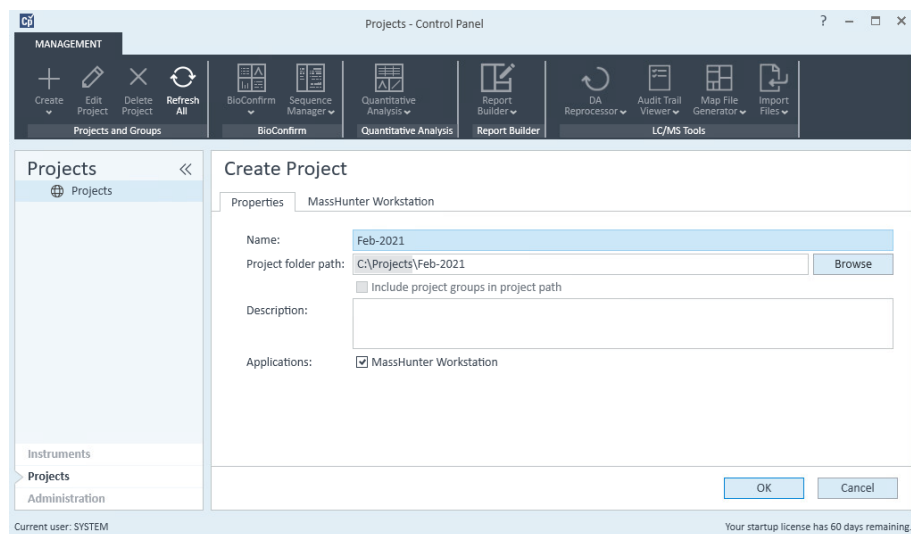
- 1 In the navigation panel, select **Projects**.
- 2 On the ribbon, click **Create > Create Project**.



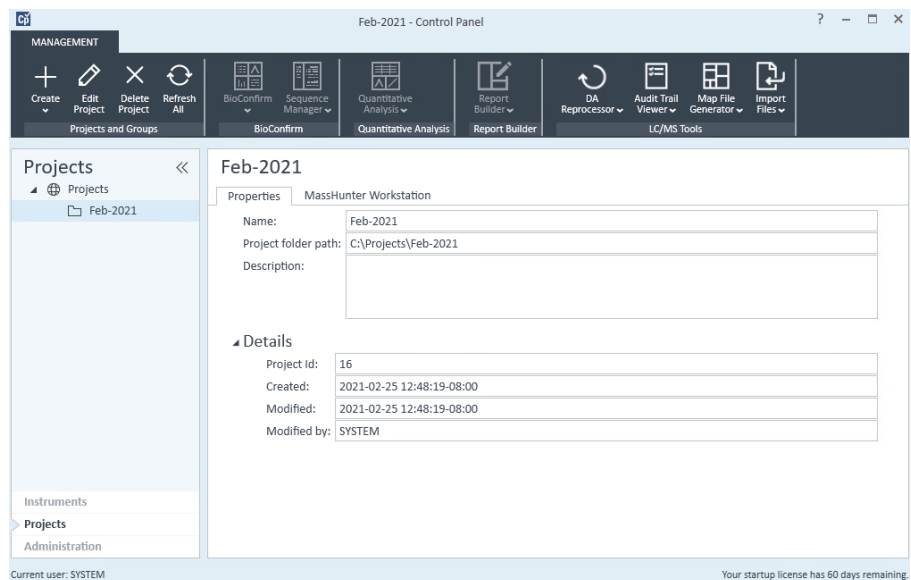
## OpenLab Control Panel Initialization

### Step 2. Create initial Project

- In the **Properties** tab, specify a **Name**, **Project folder path**, **Description**, and the **Application (MassHunter Workstation)**. Click **OK**.



- In the navigation pane, select the **Project** that you just created and verify the values.

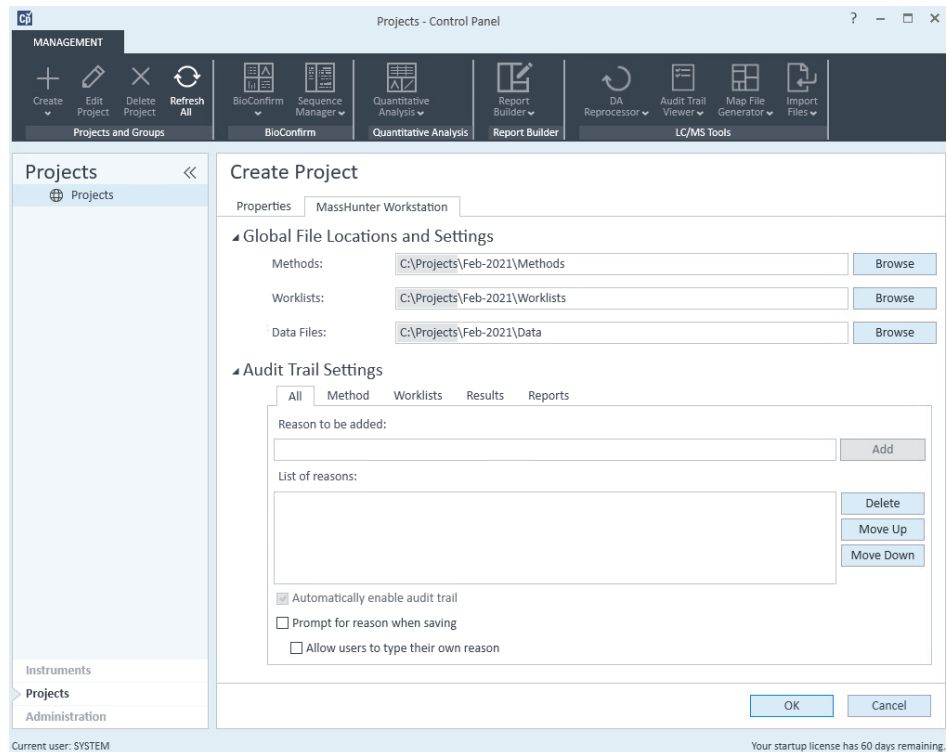


## OpenLab Control Panel Initialization

### Step 2. Create initial Project

#### 5 In the **MassHunter Workstation** tab:

- Confirm the **Global File Locations and Settings**.
- If needed for this project, under **Audit Trail Settings**, add default reasons for methods, worklists, results, and reports on the appropriate tab. You can also add general reasons to the **All** tab, which will display in all contexts.
- In the **All** tab, select **Prompt for reason** to require the user to enter a reason when saving MassHunter objects. You can also require the user to enter a reason for specific MassHunter objects, on the appropriate tab. If you select **Allow users to type their own reason**, users will be allowed to manually enter a reason.



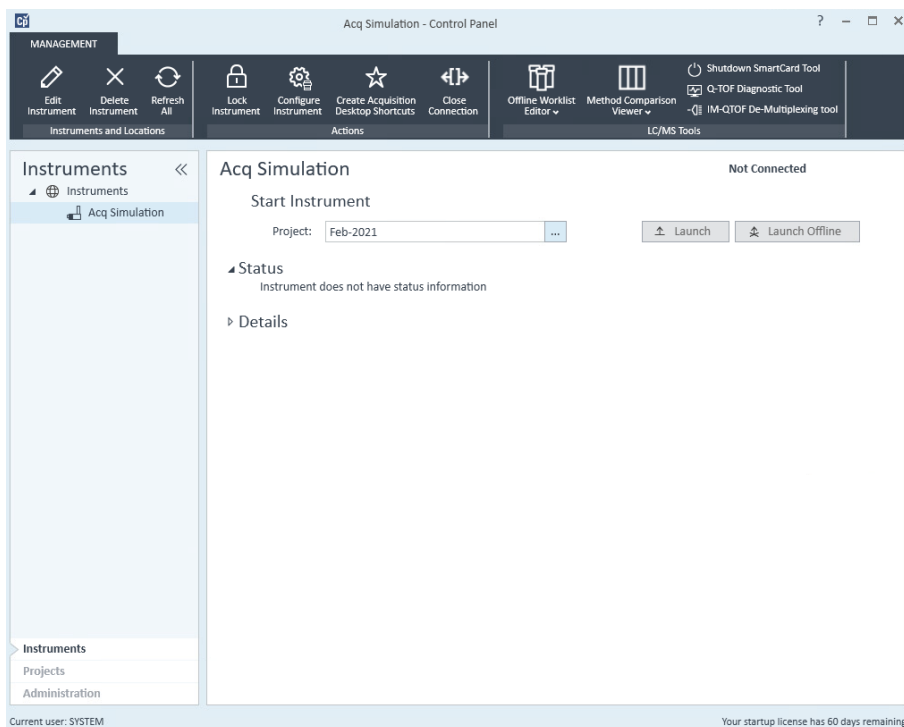
#### 6 Click **OK**.

- 7 If you installed MassHunter Quantitative Analysis and plan to create reports, import Quant report templates to your project.
  - For Workstations, copy the content of **D:\MassHunter\Report Templates\Quant** to **D:\Projects\projectname\Report Templates**.
  - For Networked Workstations, run the program **C:\Program Files\Agilent\MassHunter\Workstation\Quant\bin\QuantFileUploader.UI.exe** to recursively import the files from **D:\MassHunter\Report Templates\Quant** to **/projectname/Report Templates**.

See the MassHunter Workstation *Administration Guide* for more details.

## Step 3. Initialize instrument and start MassHunter Acquisition

- 1 In the navigation pane, select **Instruments**.
- 2 On the ribbon, click **Edit Instrument**.
- 3 If needed, rename the instrument to suit the needs of your organization.



- 4 Click **Configure Instrument** to set the IP addresses for your LC and TOF/Q-TOF instruments. Refer to the *MassHunter Help & Learning* for more details to configure instruments.

### NOTE

If you are informed that a project must be selected, next to the **Project** option, click the browse button to select your project. Do this even if the project is already displayed as the Project option.

- 5 Click **Launch** to start the LC/MS instrument.



## In This Book

This book provides instructions to install the MassHunter Workstation software in these configurations:

- Workstation (standalone, no content management)
- Networked Workstation (networked, with content management on separate server)

[www.agilent.com](http://www.agilent.com)

© Agilent Technologies, Inc. 2021  
D0012049  
July 2021 Revision A.00

