

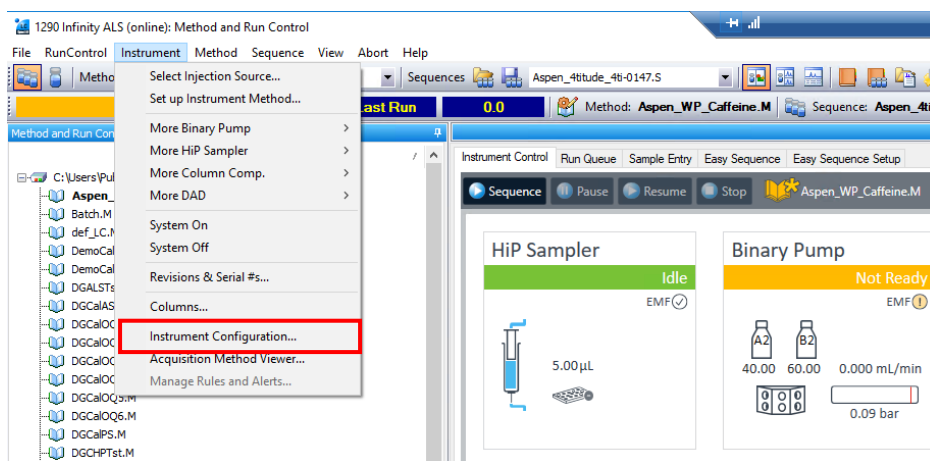
Instructions for Importing Agilent InfinityLab Well Plate Files into Agilent OpenLab ChemStation and ChemStation



OpenLab Chemstation



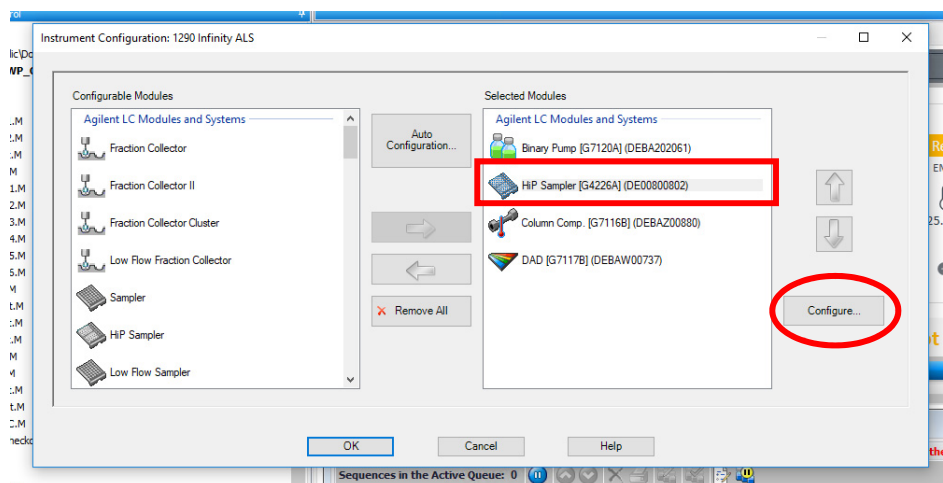
1. Launch Online Instrument
2. Click “Instrument”, then select “Instrument Configuration”



OpenLab Chemstation



3. Select your sampler on the right hand side (instrument must already be configured)

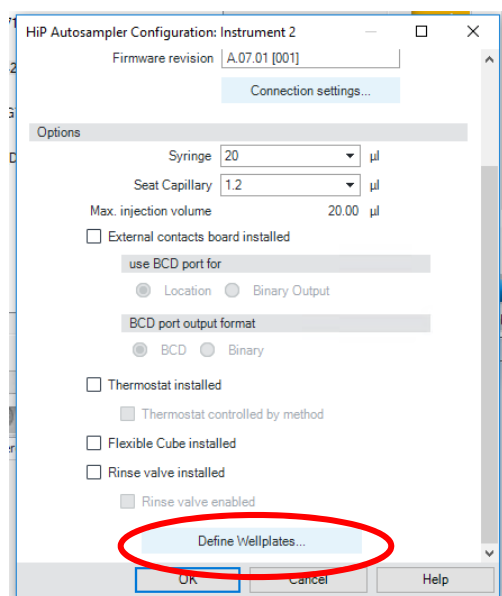


4. Select configure

OpenLab Chemstation



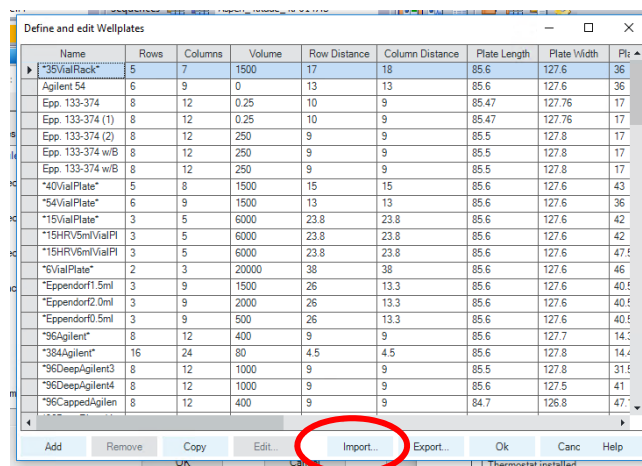
5. Scroll to the bottom of the sampler config. window and select “Define Wellplates...”



OpenLab Chemstation

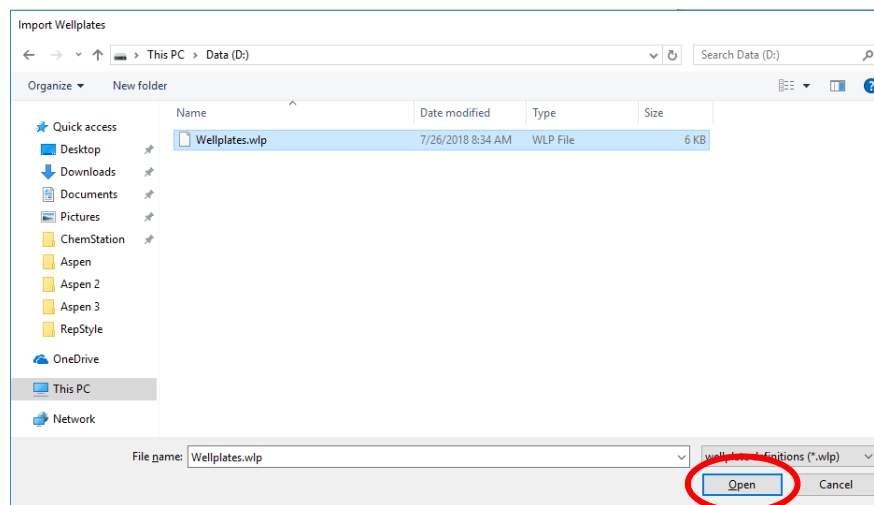


6. Select "Import..."



7. Select ".wlp" file you would like to import and select "Open"

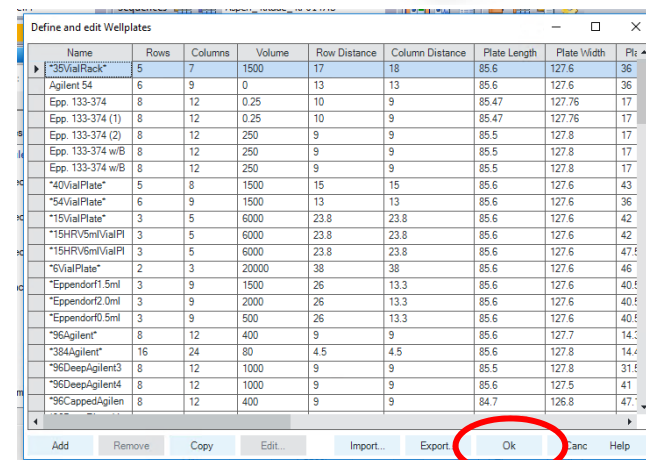
Wellplate file preferably
in ".wlp" format



OpenLab Chemstation

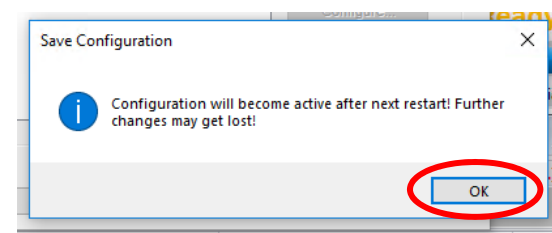


8. After import is complete, select “OK”



9. Select “OK” in sampler config. window

10. Select “OK” in instrument config. window and “Save Configuration” window will pop up. Select “Ok”.



11. Exit the program **completely** and re-launch ChemStation for changes to take effect