

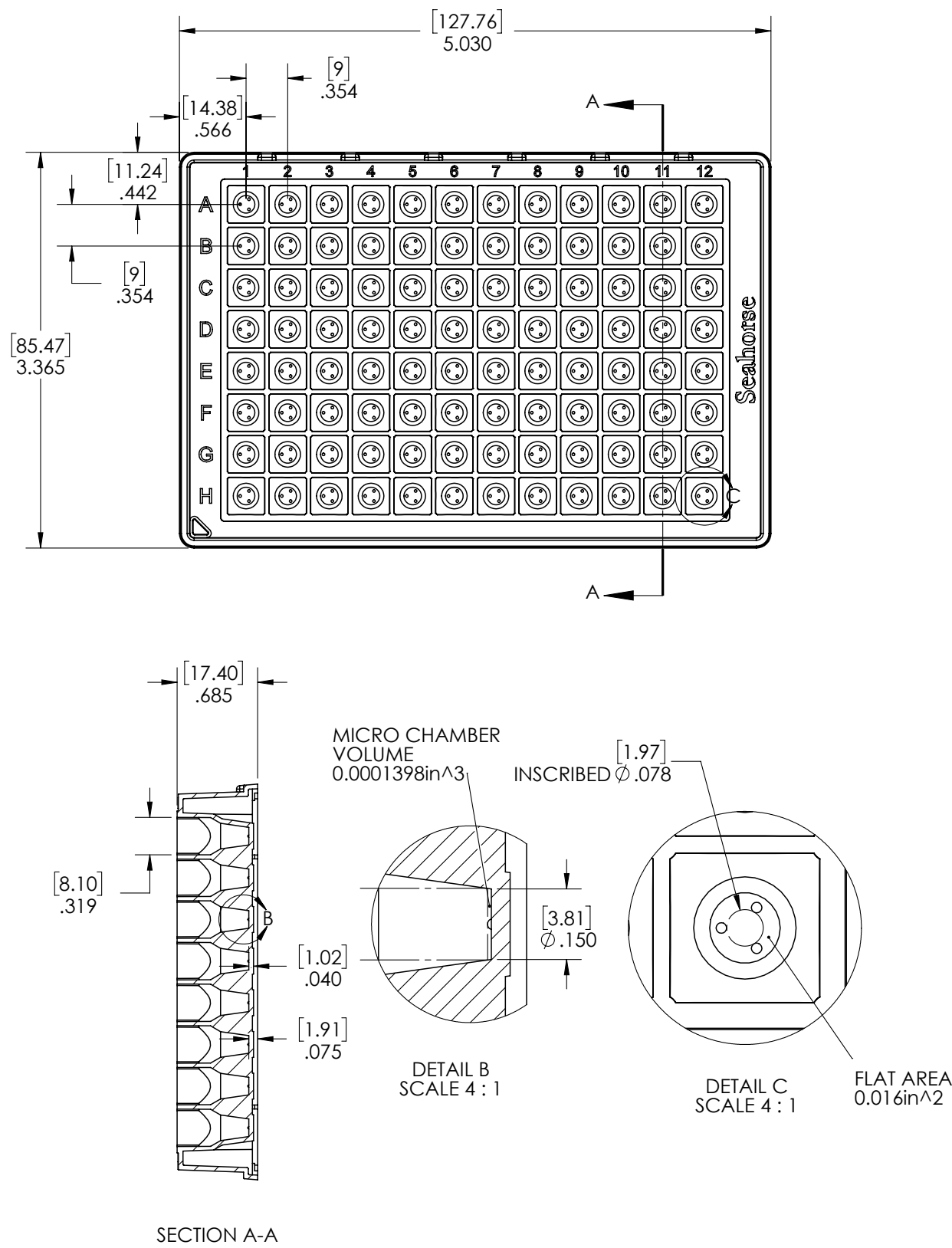
# XF Cell Culture Microplates

Click the icons below to navigate to plate dimensional drawings.

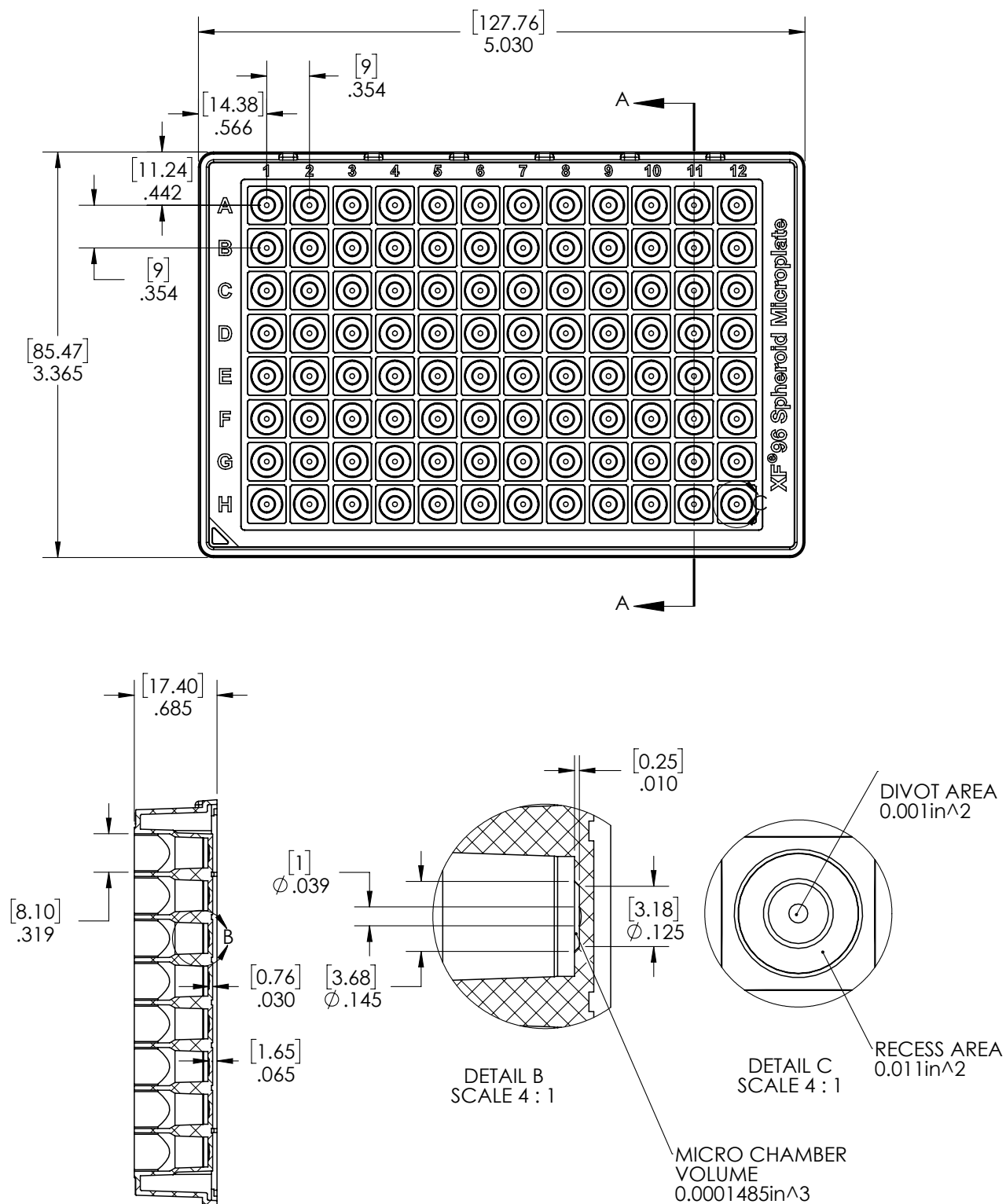
## Cell Culture Microplate Dimensions

	Max Volume (μL)	Well Depth (mm)	Well Diameter Top/Bottom (mm)	Plate Length (mm)	Plate Width (mm)	Plate Height (mm)	A1 Row offset (mm)	A1 Column Offset (mm)	Well-to-Well Row Center Spacing (mm)	Well-to-Well Column Center Spacing (mm)	Well Bottom Elevation (mm)	Well Bottom Thickness (mm)	Well Bottom Area (mm <sup>2</sup> )
XF96	250	15.49	8.1/3.81	127.76	85.47	17.4	11.24	14.38	9	9	0.89	1.02	11.40
XF24	1000	18.92	17.09/6	127.76	85.47	20.32	15.74	18.88	18	18	0.51	0.89	28.26
XFp	250	15.49	8.1/3.81	35.5	82.3	17.4	9.65	17.75	9	N/A	0.89	1.02	11.40
XF24 Islet	1000	19.18	17.09/3.15	127.76	85.47	20.32	15.74	18.88	18	18	0.5	0.65	7.79
XF96 Spheroid	250	15.75	8.1/3.18	127.76	85.47	17.4	11.24	14.38	9	9	0.89	0.76	7.94

XFe96 Cell Culture Microplate

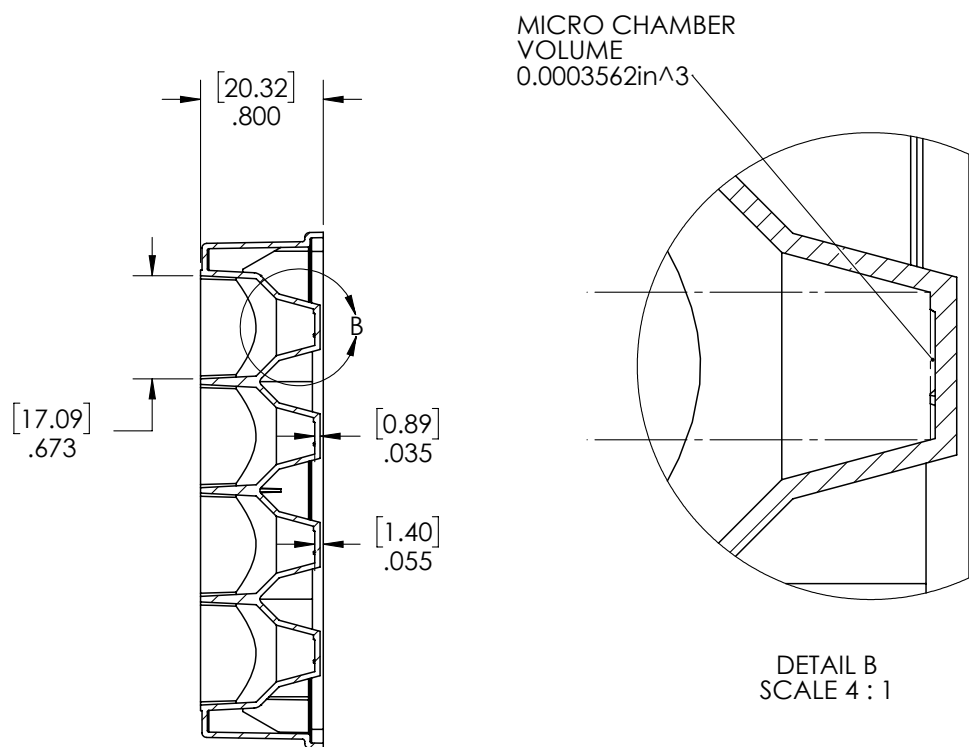
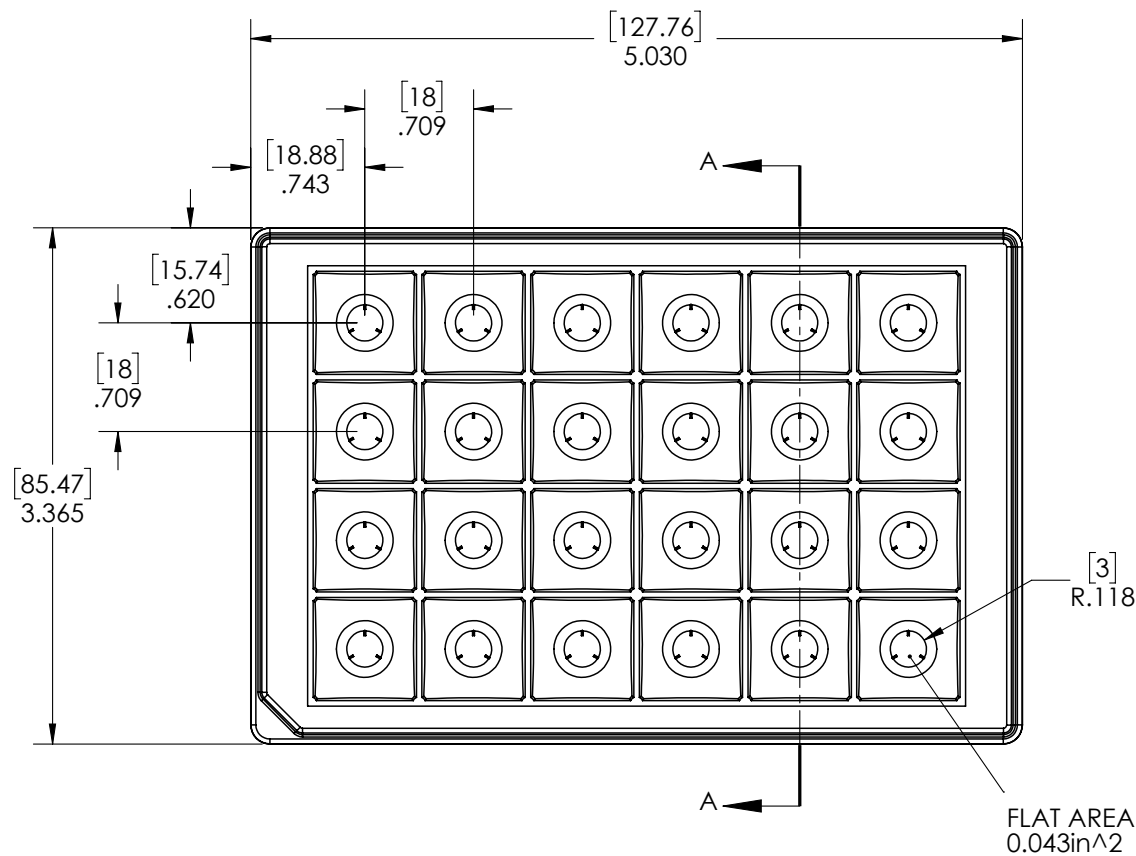


## XFe96 Spheroid Microplate



SECTION A-A

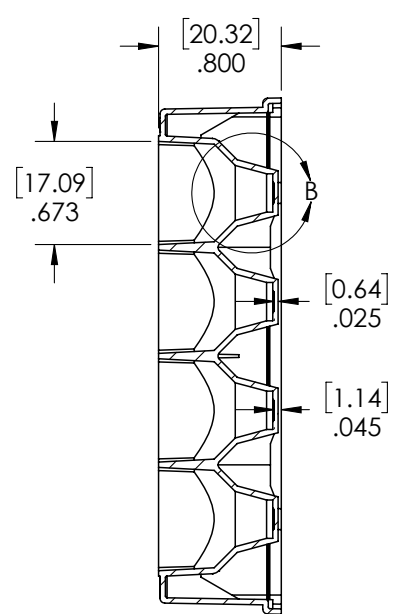
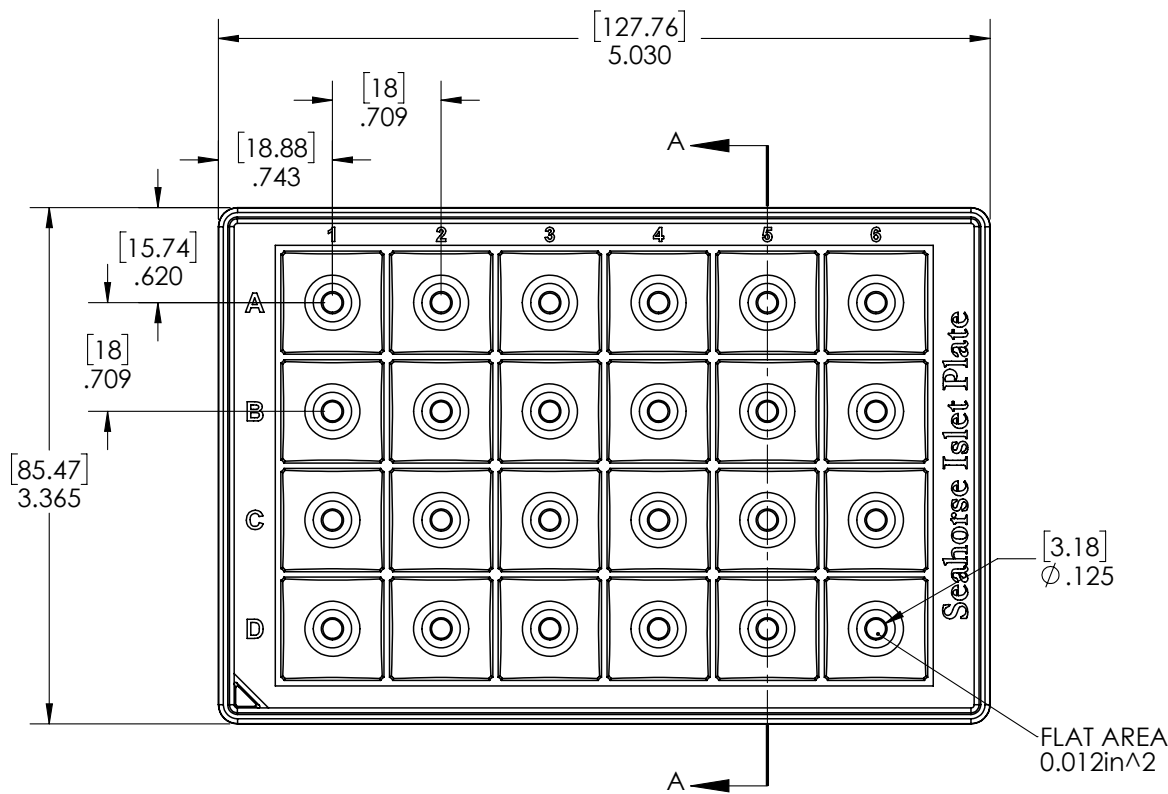
XFe24 Cell Culture Microplate



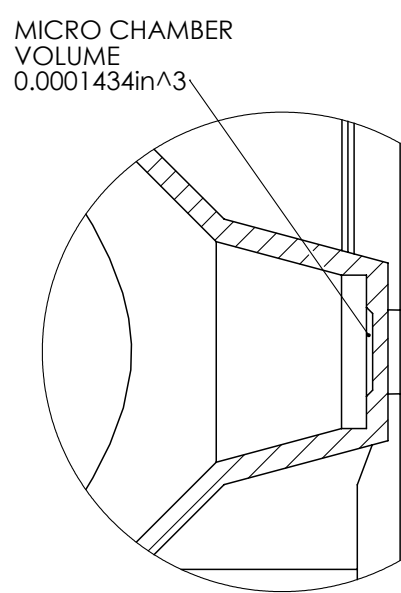
SECTION A-A

DETAIL B  
SCALE 4 : 1

XFe24 Islet Capture Microplate

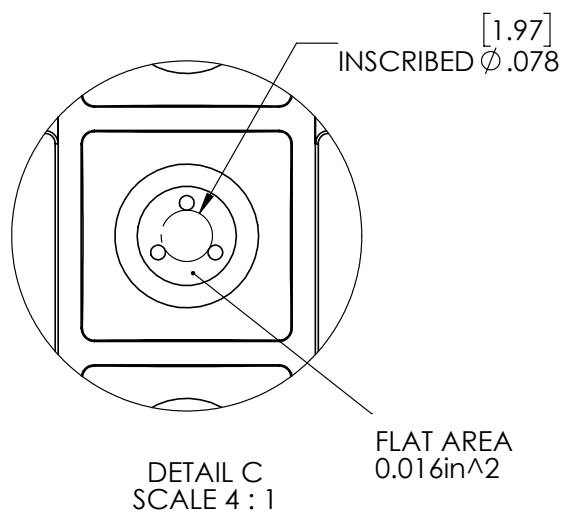
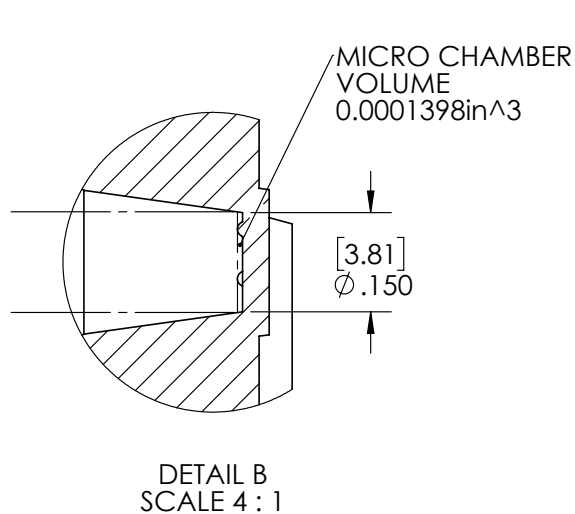
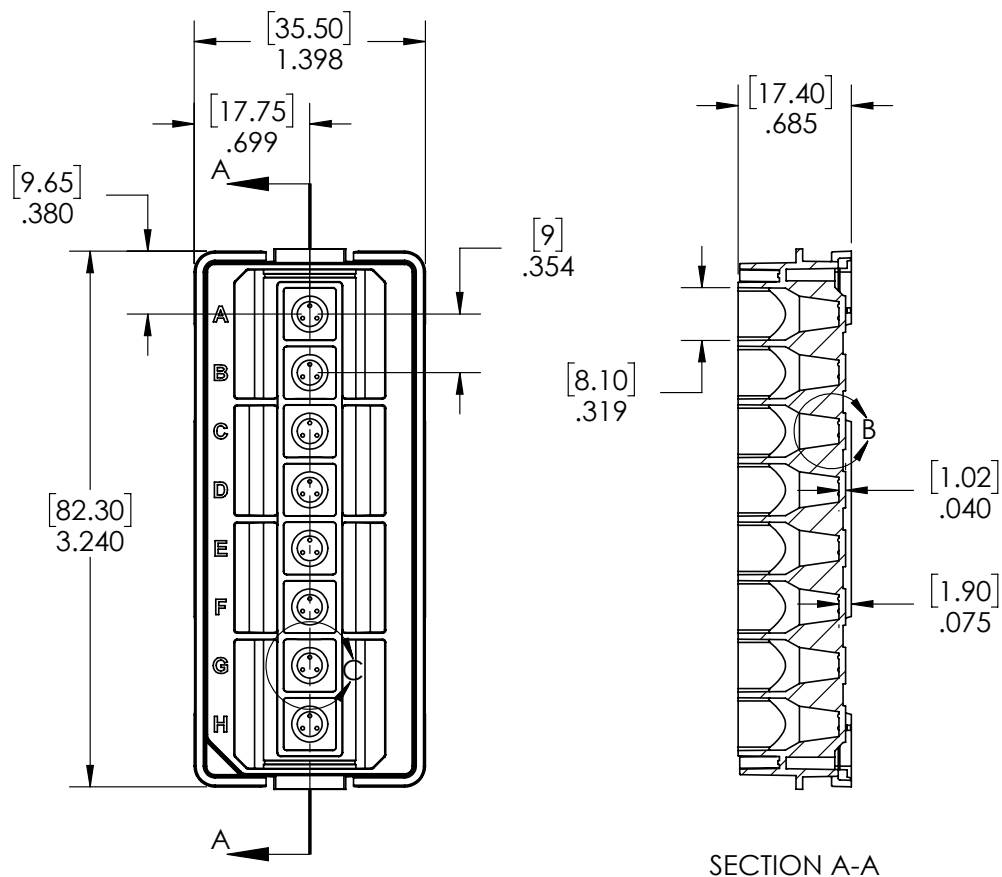


SECTION A-A



DETAIL B  
SCALE 4 : 1

## XFp Cell Culture Miniplate



[www.agilent.com/chem](http://www.agilent.com/chem)

For Research Use Only.  
Not for use in diagnostic procedures.

This information is subject to change without notice.

© Agilent Technologies, Inc. 2017  
Printed in the USA, October 20, 2017  
5991-8747EN