

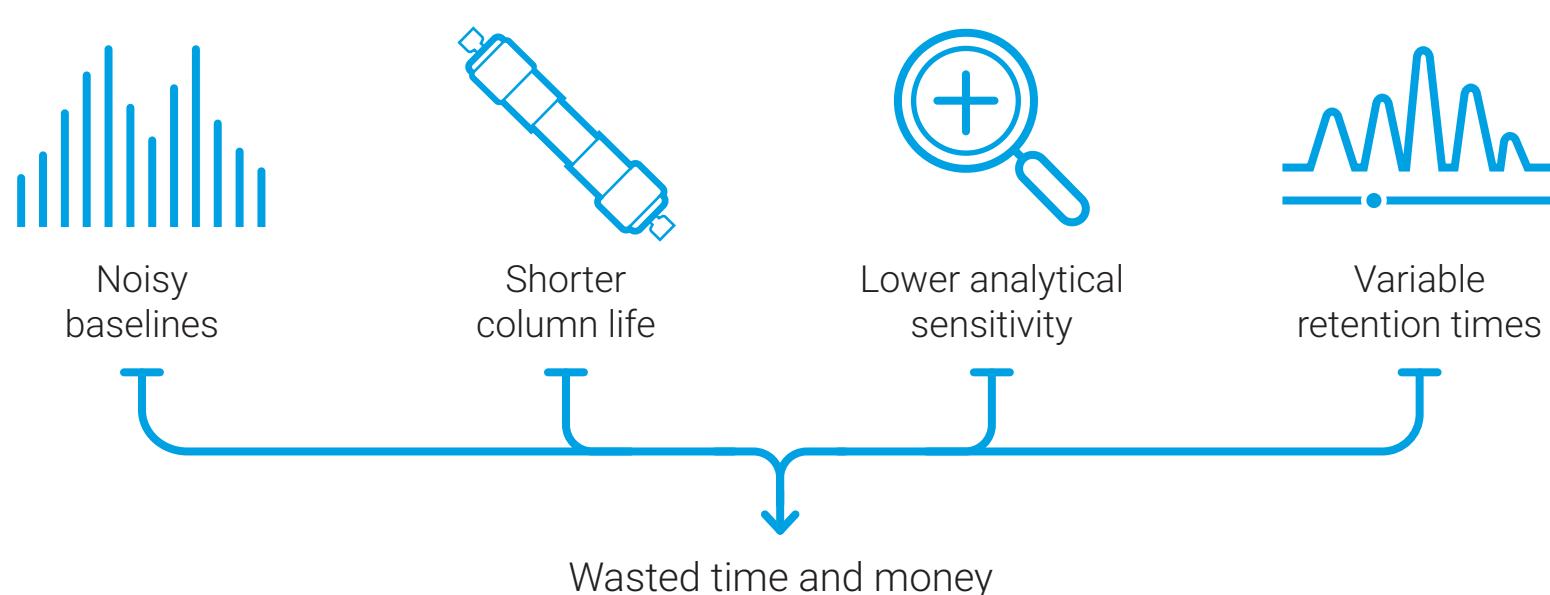
Avoid Problems and Optimize Your LC Analysis



Preventive maintenance keeps your LC systems operating at peak performance

Agilent
InfinityLab

A lack of preventive maintenance can cause problems with your LC system.



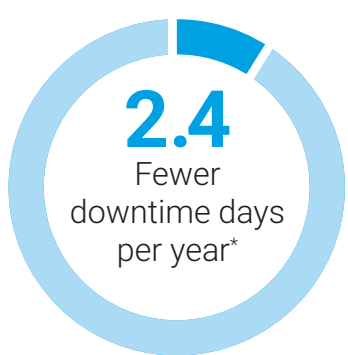
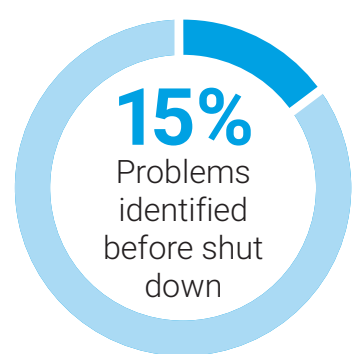
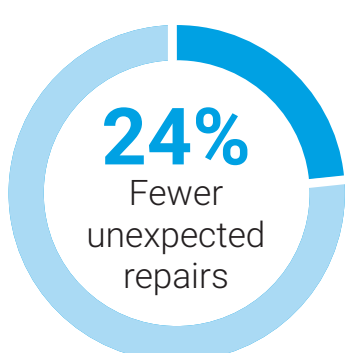
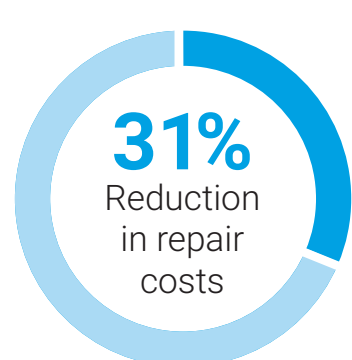
Avoid these problems using an Agilent preventive maintenance kit

The kit contains everything you need to keep your pumps, autosamplers, and detectors performing at optimal capacity:

- Seals
- Frits
- Stators
- Fittings
- Connections
- Complete instructions on cleaning or replacement
- And other components needed to maximize your LC uptime



Unlock the power of your LC system



Issues identified earlier



Lower costs



Optimal performance



Convenience



Parts that work with your system



Less unexpected downtime



Fewer repairs

Agilent preventive maintenance: The advantages are clear



Significant cost savings



Reduced repair calls



Increased uptime

Invest in Agilent preventive maintenance for your lab. Visit www.agilent.com/chem/maintenance

*Based on a five-year study of more than 38,000 service calls on Agilent and non-Agilent instruments, conducted by an independent actuarial firm.

DE44221.1043518518

This information is subject to change without notice.

© Agilent Technologies, Inc. 2021
Published in the USA, January 13, 2021
5994-3012ENE



Agilent

Trusted Answers