



Agilent SPS 6 Autosampler

Sample more. Worry less.

Uniquely Agilent in design and compatibility

- Six sample rack capacity supports up to 540 samples enabling longer unattended runs
- Lightweight, rigid, and corrosion-resistant powder-coated aluminum frame
- Compatible with a wide range of metal-free sample racks, including 90-, 60-, 40-, 24-, and 21-position racks. 96-well microtiter plate rack is also available
- Centrally located standards rack and rinse port for the fastest access and maximum throughput
- A range of carbon fiber-reinforced probes and tubing options to suit all applications
- Integrated into Agilent ICP-OES and ICP-MS instrument control software
- Dimensions:
Width: 82 cm (32.8 in)
Depth: 36.3 cm (14.3 in)
Height: 51 cm (20.1 in)
Weight: 18 kg (39.7 lbs)

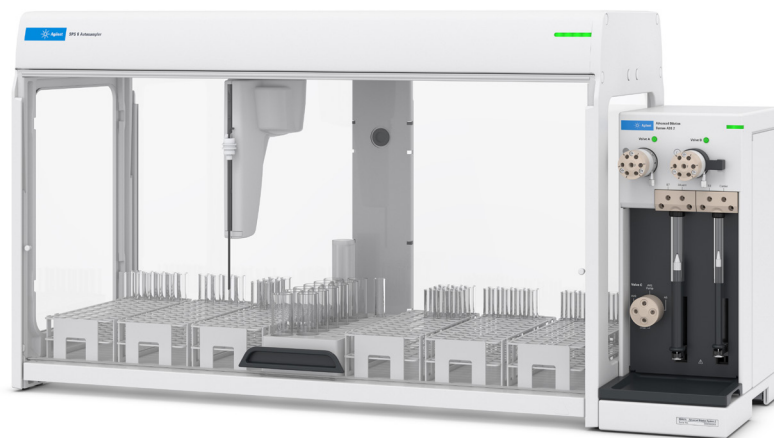
* Dimensions are identical when the cover kit is installed

Higher-capacity, bench-ready throughput

The Agilent SPS 6 is a high-capacity autosampler designed for ICP-OES and ICP-MS applications. With six sample racks supporting up to 540 tubes, it offers a 50% increase in sample capacity over the SPS 4—ideal for labs seeking greater efficiency and longer unattended runs. With the optional integrated environmental enclosure, the SPS 6 preserves sample integrity and protects the lab from hazardous vapors.

Engineered for automation and precision

Engineered for seamless integration with the Agilent ADS 2 autodilutor, the SPS 6 enables enhanced automation and extended overnight operation, streamlining sample preparation and maximizing productivity. Its rigid dual-pillar gantry design enables precise, fast, and corrosion-resistant performance, making it a reliable solution for demanding environments.



For more information visit:

www.agilent.com/chem/sps6-autosampler

DE-010727

This information is subject to change without notice.

© Agilent Technologies, Inc. 2025
Published in the USA, November 26, 2025
5994-8796EN