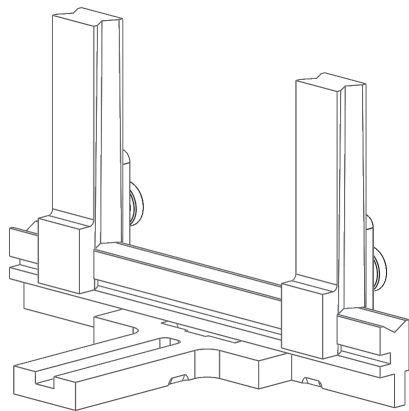


Edge Mount Sample Holder for the Cary 7000 UMS/UMA



Reproducible reflection and transmission measurements of solid samples

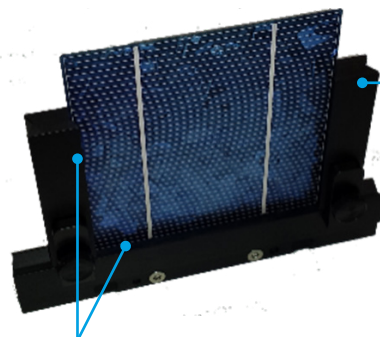
The Cary Edge Mount Sample Holder is a minimal contact holder, designed to fit inside a Cary 7000 universal measurement spectrophotometer (UMS) or a Cary universal measurement accessory (UMA).

The holder can hold samples from 25.4 x 25.4 mm (1.0 x 1.0 in) to 150 x 85 mm (6.0 x 3.3 in) size and up to 10 mm thick**.

The holder allows the accurate and reproducible mounting of samples with no contact with the front or rear sample surface. You can easily analyze highly sensitive and fragile samples such as double coated glasses, filters, or solar cells, or even displays without damaging your sample.

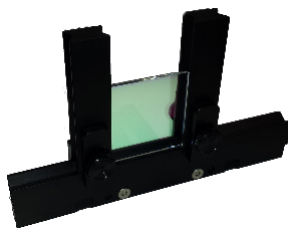
Features

- Suits samples sized from 25.4 x 25.4 mm (1.0 x 1.0 in) to 150 x 85 mm (6.0 x 3.3 in) size and up to 10 mm thick
- Samples are held only by their edges, preventing damage to their front or rear surface
- The holder can be rotated on the sample stage around its axis for reflection, transmission or absorbance measurements at up to a 78° angle of incidence, without the need to remount or interact with the sample



These vertical posts lean slightly inwards at the top. Samples are held by their edges at the top and drop down to fit into the V-channel in the bottom rail of the holder. This ensures reproducible positioning of the sample.

V-shaped channels on the inside edges of the vertical posts and along the bottom rail hold the sample in place, touching only the sample edges.



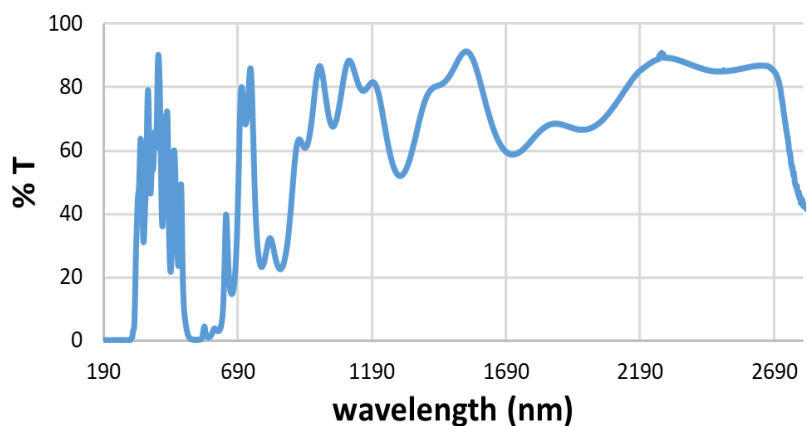


Figure 1. Transmission spectrum of a front face coated glass plate. The Edge Mount Holder made it possible to measure the spectrum of the plate without clamping or risking damage to the front face coating.

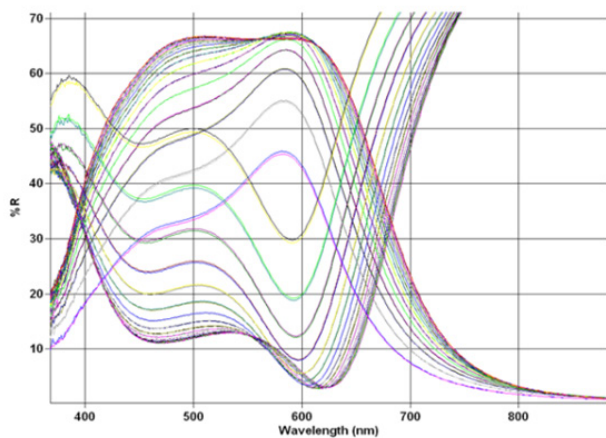


Figure 2. Transmission and reflection data of a 3 Ag Film in p- and s-polarization at angle of incidence from $\sim 10^\circ - 78^\circ$. Angular dependence of the coating is very rapid over the visible wavelength range 400 – 700 nm. Infrared dependence on angle is not as large as the silver coating reflects most of the IR light and transmits very little.

Guidelines	
Mounting Type	V-channel rails, no contact to the front and rear face
Largest Sample Dimensions (L x H)	150 x 85 mm (6.0 x 3.3 in)*
Smallest Sample Dimension	25.4 x 25.4 mm (1.0 x 1.0 in)
Max Sample Physical Thickness*	Physical: 10 mm**
Max Weight of Sample	Life tested to 6 kg Guaranteed to 3 kg
Angular Limit***	Small sample 44° 25.4 mm (1.0 in) Large Sample 80° 150 mm (6.0 in)
Material	Anodized aluminum

* maximum optical thickness is determined by the measurement needs, optical constants of the sample and chosen angle of incidence.

** given by the height of the side posts

*** determined with: 3° apertures, 2 nm SBW, reduced slits, inner-distance

Ordering information

Description	Part number
Edge Mount Sample Holder	G6874A#300

For information on other specialized sample holders refer to the following publications:

Data Sheet	Part number
Standard Solid Sample Holder	5994-3120EN
Cube Beam Splitter Holder	5994-3122EN
Round Sample Holder	5994-3119EN

www.agilent.com/chem/cary7000

DE44308.0100115741

This information is subject to change without notice.

© Agilent Technologies, Inc. 2021
Published in the USA, May 5, 2021
5994-3121EN