

# Highly Curated Workflows for Targeted Omics Using a Standardized LC/TQ Platform

## Agilent LC/MS solutions



### Experience workflow simplicity for your targeted omics studies

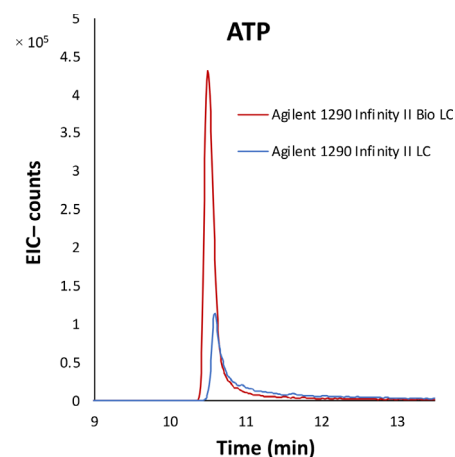
Enhance your targeted omics with a standardized LC/TQ platform from Agilent.

Our advanced LC/TQ technologies allow for the creation of large, multiplexed target lists for primary metabolites, lipids, and peptides, helping you achieve even more biological insight.

### Standardize your LC/MS

Many metabolites are sensitive to metal interactions in liquid chromatography which reduces peak shape and sensitivity. The Agilent 1290 Infinity II Bio LC system enables a standardized LC/MS omics platform by providing inert surfaces for a biocompatible flow path, reducing metabolite interactions.

Our standardized platform allows you to switch between applications with minimal effort.



[Learn more](#)

Explore our robust metabolomics, lipidomics, and proteomics workflows, enabled through the 1290 Infinity II Bio LC system

## Peptide quantification in plasma using MRM-based LC/TQ analysis

Easily make the jump into the proteome using PeptiQuant Plus kits from MRM Proteomics, using the same system you routinely use for metabolomics and lipidomics. These easy-to-use, robust, reproducible, and highly quantitative kits are compatible with our standardized LC/MS platform, helping to provide multiomics data all in one system.

[Find out more from MRM Proteomics](#)

[See how to incorporate these kits into your workflow](#)

[Learn more about protein sample prep](#)



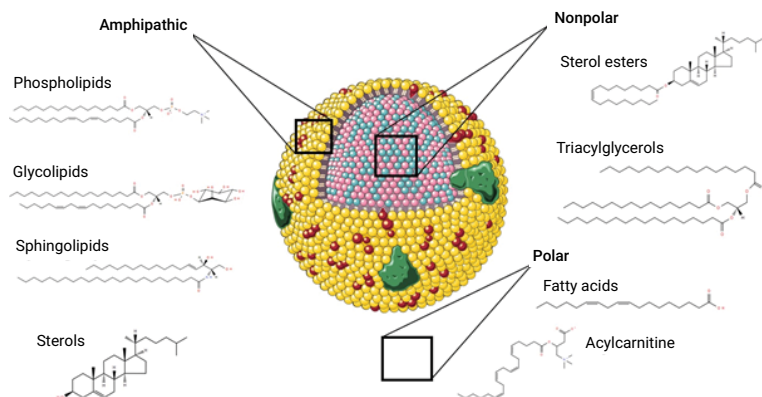
## A comprehensive, high throughput method for lipidome analysis

Capture a full picture of the lipidome with this method designed to deliver robust results for large cohort studies. It features hundreds of highly curated lipid targets to enable greater insight into disease states and lipid metabolism and uses Agilent LC/TQ instrumentation with an easily adaptable protocol.

This workflow includes considerations for:

- Sample preparation and lipid extraction
- Quality control strategies
- Internal standard formulation
- Instrument conditions
- Data processing

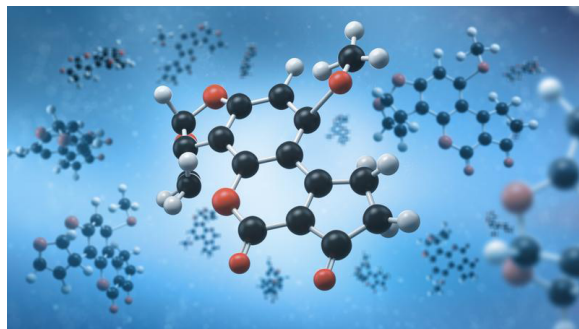
[More details](#)



## HILIC method and database for targeted metabolomics

Jump-start your metabolomic analysis with a highly curated, comprehensive hydrophilic liquid chromatography (HILIC) method, focused on coverage of primary metabolic pathways. Using Agilent solutions, the robust workflow has automated sample preparation, LC/TQ conditions, tips and tricks, and metabolite databases to enable easy adoption into any lab.

[See the workflow](#)



## A semi-automated dual cell sample preparation workflow

Improve your lab's productivity with a semi-automated, dual cell sample preparation workflow, reproducibly recovering metabolites and lipids from the same sample. Compatible with standardized LC/MS workflows, this method:

- Improves reproducibility over manual preparation
- Frees up qualified lab personnel for other critical tasks
- Enables large cohort studies

### Explore the workflow

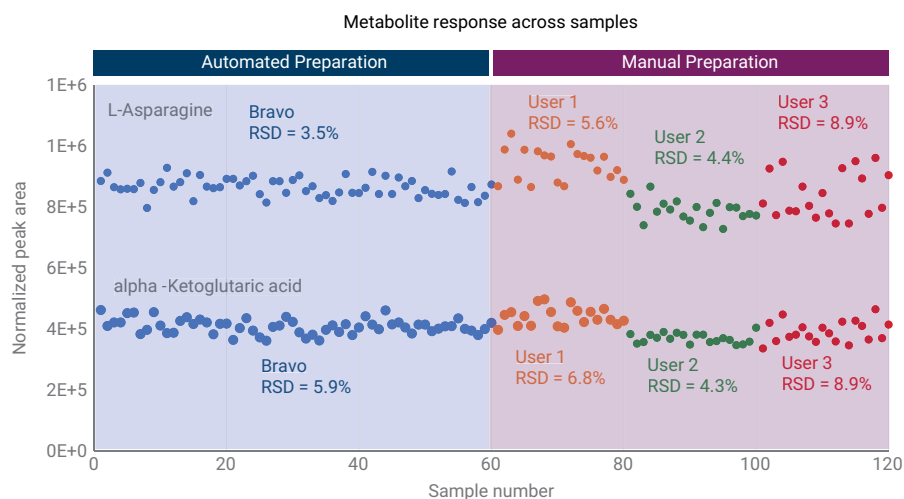


Figure from Agilent application note 5994-2156EN



For more information on Agilent LC/MS solutions,  
[visit our website.](#)

For Research Use Only. Not for use in diagnostic procedures.  
RA45407.603287037

This information is subject to change without notice.

© Agilent Technologies, Inc. 2024  
Published in the USA, March 22, 2024  
5994-7447EN